

WARNING!



Be sure electrical power is OFF before and during installation or maintenance.
The luminaire must be installed by a qualified electrician, in accordance with all applicable local codes.

Ensure that the rated luminaire voltage requirements are compatible with the available mains supply in which it will be installed.
All LEDs are included in your lamp. Never touch the LED surface with your bare hands as this may reduce the life of your LED.
Do not alter, relocate or remove any electrical component.

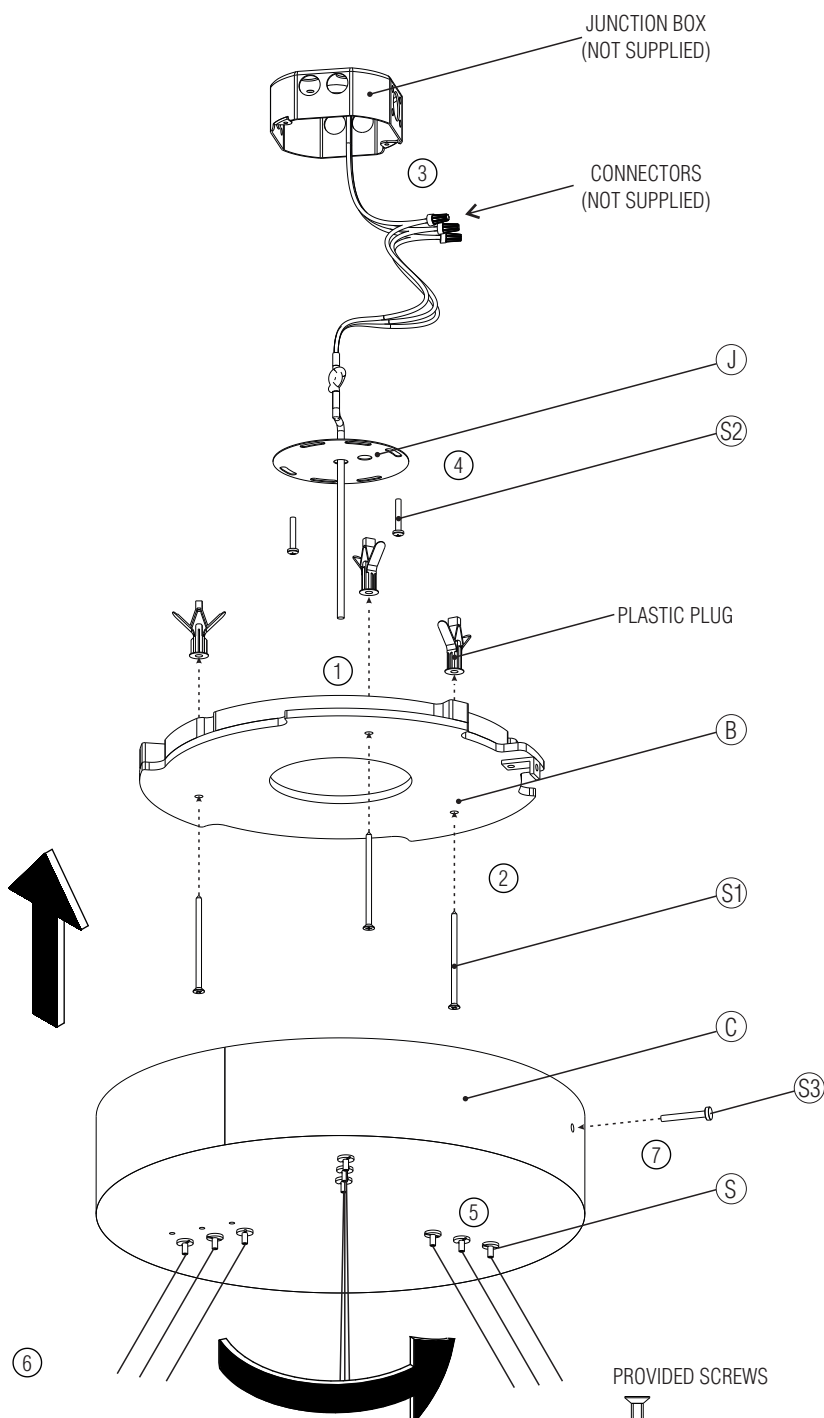
Line: Frame
Family: Pendant
Description: Pendant Accord Cilindrica trio 1414

Input voltage: 120-277 V

Input frequency: 60 Hz

Isolation: Class II

Material: Natural Wood Veneer MDF and acrylic



ASSEMBLING ON THE CEILING

Turn off the electrical power before starting the installation, and keep it turned off until the installation is completed.

This assembly may require the work of two people so it can be secure and well executed.

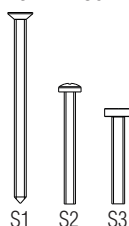
- ① Using the support base (B) as template, mark the position for the holes on the ceiling. Using an 8mm drill, make the holes and insert the plastic bushings on them.
- ② Use the (S1) screws to fixate the support base into the bushings previously installed.
- ③ Make the electrical connections in compliance with all the safety standards and local electrical codes.
This product must be installed in accordance with the applicable installation code by a person familiar with the construction and operation of the product, and the hazards involved.
- ④ Using the (S2) screws, fixate the junction box cover (J) to the junction box.
- ⑤ Tighten the screws on the strain reliefs (S) to anchor the power cables.
- ⑥ Bring the canopy close to the support, insert it, and twist the canopy to lock it in place.
- ⑦ Use the (S3) finishing screw to lock the canopy in place.

ATTENTION!



FAILURE TO COMPLY WITH THESE INSTRUCTIONS MAY CAUSE ACCIDENTS AND LOSS OF PRODUCT WARRANTY.
It is recommended to read these instructions completely and carefully before proceeding.

PROVIDED SCREWS



SAVE THESE INSTRUCTIONS FOR FUTURE REFERENCE.

ACCORD Lighting guarantees coverage against manufacturing defects including electrical components and finishes, for a period of three years, under normal use, from the date of purchase. For warranty service, please contact your local dealer for further instructions. Proof of date of purchase will be required for validation of warranty service.

The responsibility of the manufacturer regarding the product warranty is related to the correct observation of the instructions contained in this manual.
The manufacturer is not responsible for any damage to the product caused by accidents, alterations of any kind, improper usage or improper installation.
See the website for additional warranty details.

ACCORD Lighting reserves the right to change the dimensions and specifications contained in this manual without prior notice, in accordance with its policy of continuous product improvement. Please, contact the manufacturer if additional information is necessary. The illustrations in this manual are for guidance only and may vary in scale, dimensions and model details.

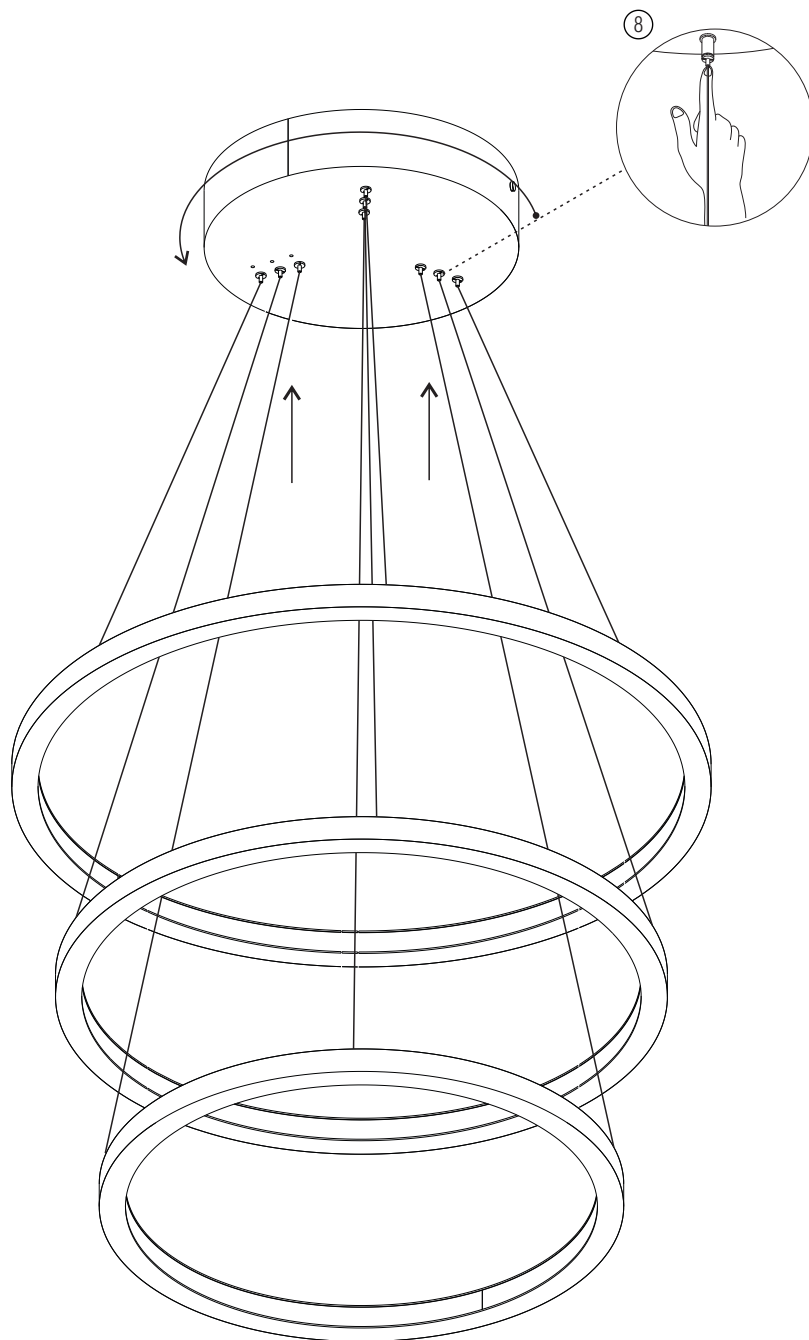
WARNING!



Be sure electrical power is OFF before and during installation or maintenance.
The luminaire must be installed by a qualified electrician, in accordance with all applicable local codes.

Ensure that the rated luminaire voltage requirements are compatible with the available mains supply in which it will be installed.
All LEDS are included in your lamp. Never touch the LED surface with your bare hands as this may reduce the life of your LED.
Do not alter, relocate or remove any electrical component.

Line: Frame
Family: Pendant
Description: Pendant Accord Cilindrica trio 1414
Input voltage: 120-277 V
Input frequency: 60 Hz
Isolation: Class II
Material: Natural Wood Veneer MDF and acrylic



ASSEMBLING ON THE CEILING

- ⑧ To insert the cable and adjust the height, press the tip of the gripper while simultaneously sliding the cable in. When you release it, the gripper will lock the cable and anchor the fixture. Repeat this process with all the grippers, adjusting the height and leveling the fixture. Reserve the extra cables by wrapping it inside the fixture, and make sure that it does not touch any electrical connections and electrical components.

Turn on the electrical power.

Your luminaire is ready for use.

ATTENTION!



FAILURE TO COMPLY WITH THESE INSTRUCTIONS MAY CAUSE ACCIDENTS AND LOSS OF PRODUCT WARRANTY.
It is recommended to read these instructions completely and carefully before proceeding.

SAVE THESE INSTRUCTIONS FOR FUTURE REFERENCE.

ACCORD Lighting guarantees coverage against manufacturing defects including electrical components and finishes, for a period of three years, under normal use, from the date of purchase. For warranty service, please contact your local dealer for further instructions. Proof of date of purchase will be required for validation of warranty service.

The responsibility of the manufacturer regarding the product warranty is related to the correct observation of the instructions contained in this manual.
The manufacturer is not responsible for any damage to the product caused by accidents, alterations of any kind, improper usage or improper installation.
See the website for additional warranty details.

ACCORD Lighting reserves the right to change the dimensions and specifications contained in this manual without prior notice, in accordance with its policy of continuous product improvement. Please, contact the manufacturer if additional information is necessary. The illustrations in this manual are for guidance only and may vary in scale, dimensions and model details.