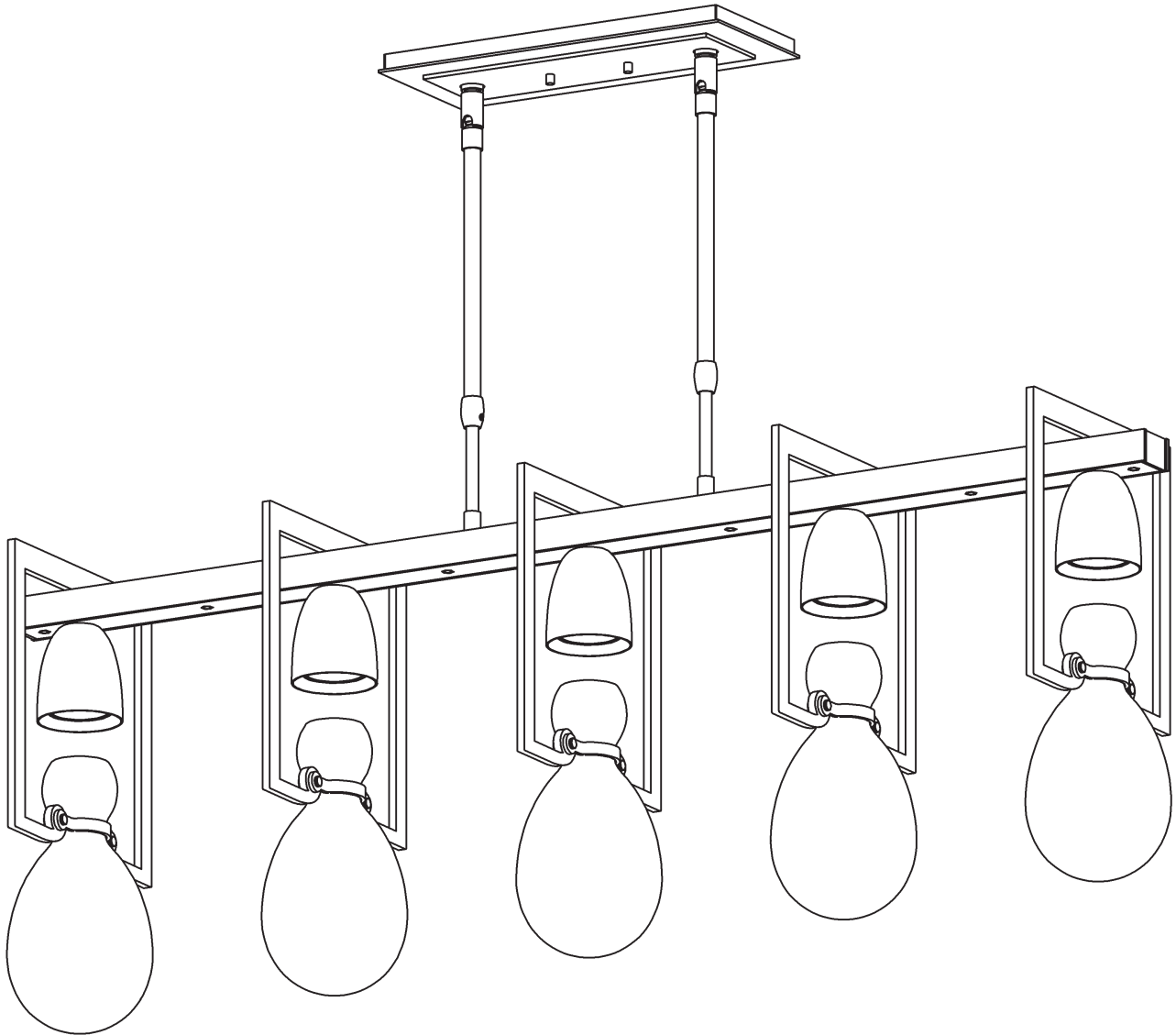


ASSEMBLY & INSTALLATION INSTRUCTIONS

A534

137810 Apothecary Pendant



HUBBARDTON FORGE.

MODERN AMERICAN BLACKSMITHS | FINE, HAND CRAFTED LIGHTING
CASTLETON, VERMONT USA | HUBBARDTONFORGE.COM

Component Parts

- A Fixture**
- B Fixture Pipe (2)**
- C Fixture Coupling (2)**
- D Crossbar**
- E Plastic Sleeve (2)**
- F Set Screw (2)**
- G Canopy Pipe (2)**
- H Clutch (2)**
- I Mounting Bracket**
- J Hex Nipple (2)**
- K Lockwasher (2)**
- L Lag Screws (4)**
- M Canopy**
- N Barrel Nuts (2)**
- O Swivel (2)**
- P Studs (2)**
- Q Nuts (2)**
- R Glass (5)**
- S Thumb Screw (20)**
- T Bracket (10)**



ASSEMBLY & INSTALLATION INSTRUCTIONS

A534

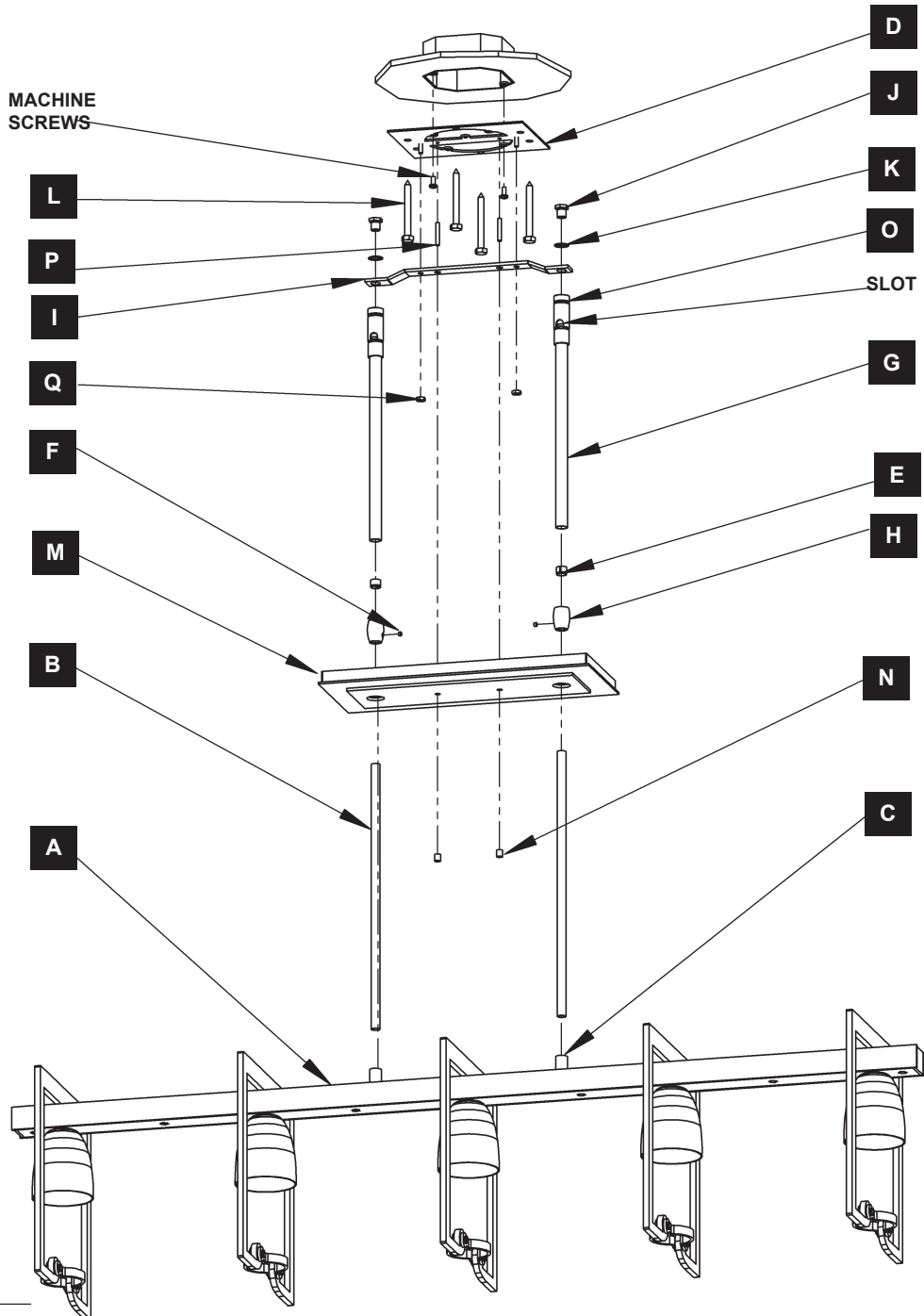
137810 Apothecary Pendant

CAUTION: FAILURE TO INSTALL THIS FIXTURE PROPERLY MAY RESULT IN SERIOUS PERSONAL INJURY OR DEATH AND PROPERTY DAMAGE. We recommend installation by a licensed electrician. This product must be installed in accordance with applicable installation code(s), by a person familiar with the construction and operation of the product and the hazards involved.*

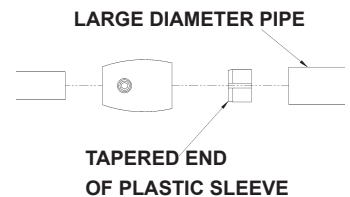
Caution: Do not exceed maximum wattage noted on fixture. Use only recommended bulbs with fixture.

Please Note: After installation extra hardware and accessories are possible; our kits are used on multiple products.

To Install Fixture (Figures 1 & 2)



(Figure 1)



(Figure 2)

ASSEMBLY & INSTALLATION INSTRUCTIONS

A534

137810 Apothecary Pendant

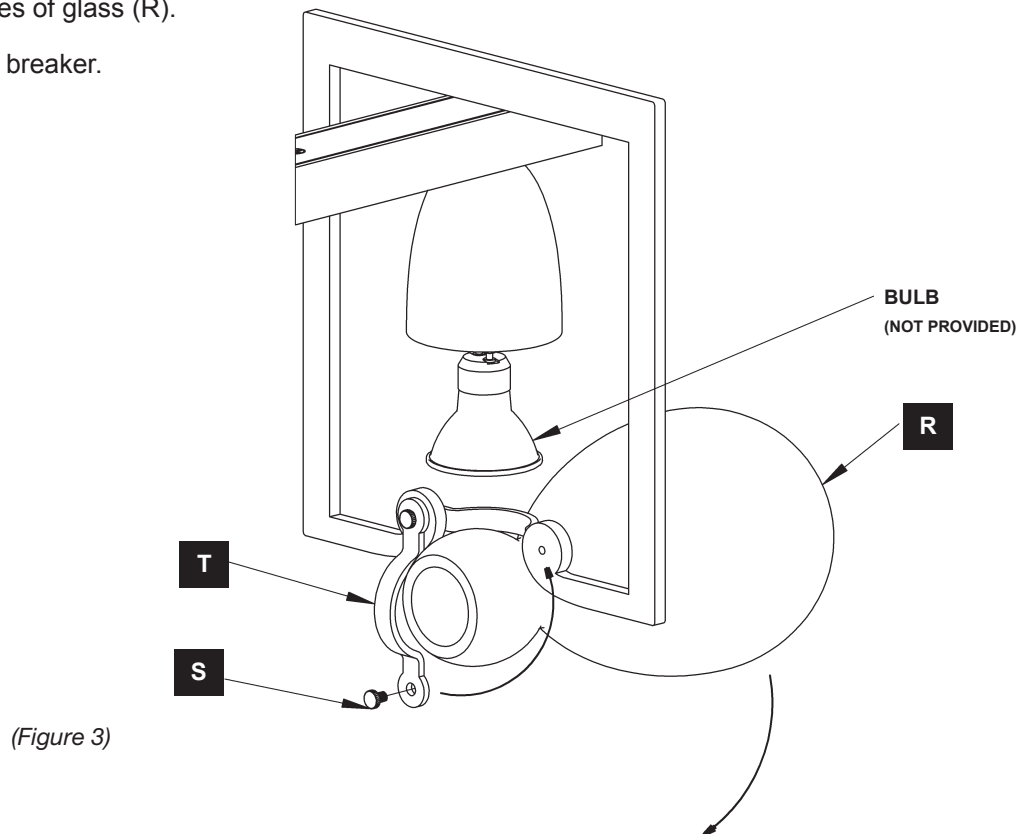
CAUTION: BE SURE POWER IS OFF AT THE MAIN BREAKER BOX PRIOR TO INSTALLATION.

1. Carefully unpack the fixture (A) from the carton.
2. Thread studs (P) into appropriate holes in crossbar (D) to match holes in canopy (M).
3. Using two machine screws (not provided), fasten the crossbar (D) to the electric box.
Note: A new electric box comes with screws. When replacing a fixture, retain the existing screws for use with the new fixture.

Alternate Mounting Option - Using four lag screws (L) attach crossbar (D) to a structural member in the ceiling, centering the crossbar over the outlet box. Lag screws are supplied with the fixture; however, different materials and/or construction methods may require different fasteners. If in doubt, contact a qualified electrician.
4. Locate fixture pipe (B) and slip the end of the pipe with the shorter threads over wires.
5. Apply a drop of the supplied thread locking compound to the internal threads of the fixture coupling (C) and screw fixture pipe (B) into fixture coupling (C), being careful not to twist the wires.
Note: Application of the thread locking compound is necessary to prevent the stem from loosening during regular maintenance and cleaning of the fixture. Be certain to apply the compound.
6. Repeat for remaining fixture pipe (B).
7. Slide canopy (M) over fixture pipes (B) until it rests on fixture (A).
8. Unscrew the hex nipple (J) from the swivel (O) and remove it and the lock washer (K).
9. Slide the wires from the fixture pipe (B) through the canopy pipe (G) and swivel.
10. Insert threaded end of hex nipple (J) down through the lock washer (K) and mounting bracket (I). Screw into the swivel (O).
11. Repeat for other canopy pipe (G), swivel (O), lock washer (K) and hex nipple (J).
12. Tighten hex nipple (J) securely being sure the notches in the swivels (O) are aligned.
Note: If installing on a sloped ceiling, make certain that the notches in the swivel are oriented toward the lower side of the slope.
13. Unscrew the clutch (H) from canopy pipe (G); slide it across the wires and onto the fixture pipe (B). Follow this with the plastic sleeve (E), oriented so the tapered end nests in the clutch (H) (Figure 2). It may be necessary to loosen the set screw (F) in the clutch (H).
14. Slide the canopy pipes (G) over the fixture pipes (B) as far as necessary to give you the total height of the fixture which you desire. Be careful not to scratch the pipe surface and to pull excess wire up through the canopy pipe (G). There must be a minimum 1-1/2" of inner pipe inside the outer pipe.
15. Tighten the set screws (F) in clutches (H) firmly with hex wrench provided.
16. Raise fixture (A), mounting bracket (I) and canopy (M) assembly up to ceiling. Using nuts (Q), secure mounting bracket (I) to crossbar (D)
17. Using suitable wire connectors (not provided) connect fixture wires to the supply wire (white to white and black to black). Connect all ground wires together. Push wires back into box.

CAUTION: MAKE SURE WIRE CONNECTORS ARE TWISTED ON SECURELY, AND NO BARE WIRE IS EXPOSED.

18. Raise canopy (M) and push firmly to ceiling, making sure that no wires are pinched between canopy and ceiling. Secure the canopy with barrel nuts (N).
19. Once the fixture is fastened to the ceiling, make sure clutch set screws (F) are tightened with hex wrench provided. Only after the set screws (F) are tight is the fixture (A) fully supported.
20. Install bulbs (not included)
21. Remove one thumb screw (S) from one of the brackets (T).
22. Allow the bracket (T) to swing to a vertical position. See Figure 3.
23. Holding the glass (R) horizontal, place the neck of the glass (R) against the bracket (T) that is completely installed.
24. In one movement, rotate the glass (R) to a vertical position while swinging the bracket(T) back into a horizontal position.
25. Re-install the thumb (S) screw into the bracket (T).
26. Repeat for remaining pieces of glass (R).
27. Restore electricity at main breaker.



If you need further assistance, or find that you are missing any parts, please contact the dealer from which you purchased this product. We hope you enjoy your fixture!

*** Hubbardton Forge will not be liable for injury or damage caused by improper installation, lamping or use of this fixture.**