

Assembly & Installation Instructions

A257

For Aura Pendant 13-8585

Page 1 of 3

CAUTION: FAILURE TO INSTALL THIS FIXTURE PROPERLY MAY RESULT IN SERIOUS PERSONAL INJURY OR DEATH AND PROPERTY DAMAGE. We recommend installation by a licensed electrician.

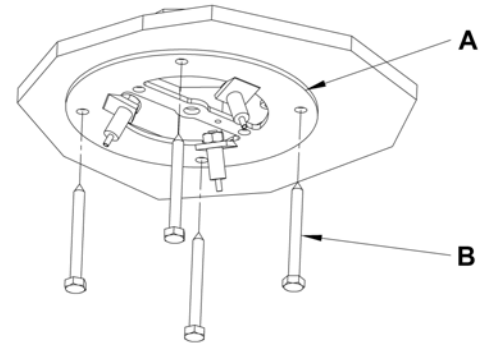
This product must be installed in accordance with applicable installation code(s), by a person familiar with the construction and operation of the product and the hazards involved.*

Caution: Do not exceed maximum wattage noted on fixture. Use only recommended bulbs with fixture.

To Install to Ceiling (Figures 1 thru 6)

Component Part

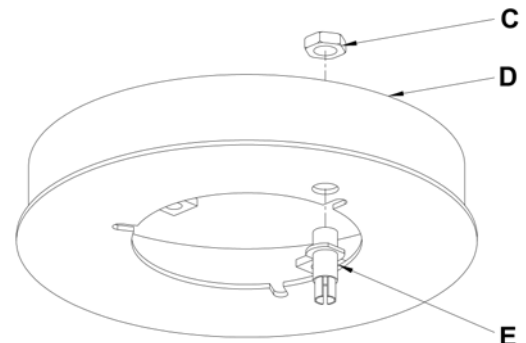
A Ceiling Bracket	I Supply wire
B Lag Screw (4)	J Flat Head Screws (2)
C Hex Nut	K Threaded Standoffs (2)
D Canopy	L Cupped Washer
E Strain Relief	M Ground Screw
F Support Cable (3)	N Canopy Nipple
G Cable Gripper (3)	O Canopy Cover
H Strain Relief Cap	P Lock Up



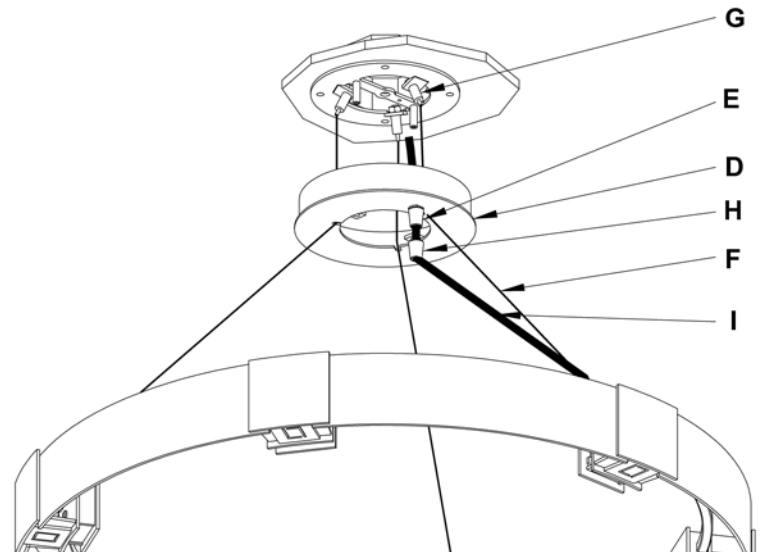
(Figure 1)

Caution: Be sure power is off at the main breaker box prior to installation.

1. Carefully unpack the fixture from the carton.
2. Put the ceiling bracket (A) and canopy (D) together, making sure the canopy mounting holes match up with the ceiling bracket threaded standoffs. Orient them to achieve desired wire location.
Note: Canopy and ceiling bracket only install one direction which determines where the wire entry location through the canopy will be.
3. Using the four lag screws (B) attach ceiling bracket (A) to a structural member in the ceiling, centering the crossbar over the outlet box. We've supplied lag screws with your fixture; however, different materials and/or construction methods may require different fasteners. If in doubt, contact a qualified electrician. Do not attach crossbar directly to outlet box.
4. Install strain relief (E) into canopy (D). Thread hex nut (C) onto strain relief and tighten (Figure 2). *Do not over-tighten.*
5. Raise fixture and push support cable (F) next to the strain relief (E) through cable gripper (G). Slip canopy (D) onto the cable oriented so the strain reliefs are above each other.
6. Slip the other two support cables (F) through the canopy (D) and into the cable grippers (G) until desired fixture height is accomplished and level.
7. Slip supply wire (I) through the strain relief cap (H) and through the strain relief (E).



(Figure 2)



(Figure 3)

(continued)

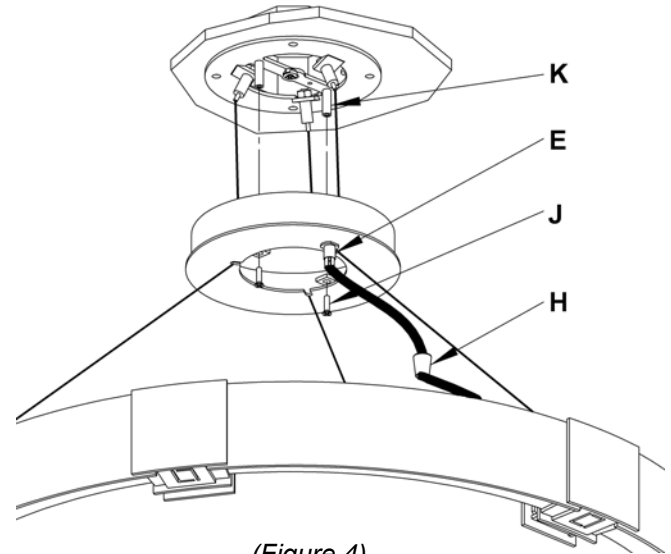
Assembly & Installation Instructions

For Aura Pendant 13-8585

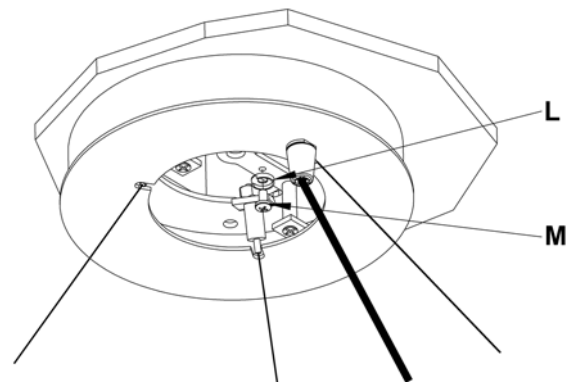
A257

Page 2 of 3

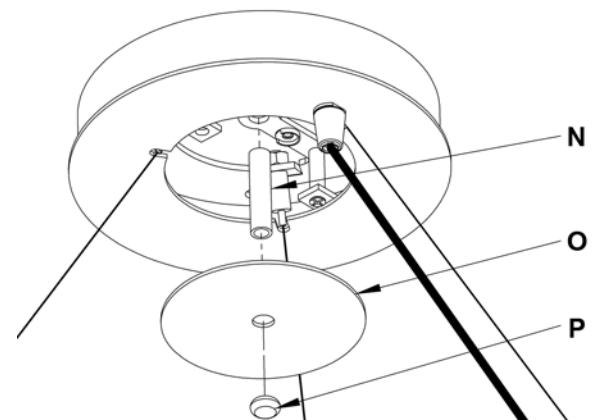
8. Pull supply wire (I) out through the back of the canopy (D).
9. Raise the canopy (D) to the ceiling and attach to ceiling bracket (A) with two flat head screws (J) threaded into two threaded standoffs (K) (*Figure 4*).
10. Pull supply wire (I) through canopy (D) out through the center hole in canopy (D).
11. Thread strain relief cap (H) onto strain relief (E) until snug.
12. Cut excess supply wire (I) allowing enough left (approx. 6") to make connections in the electrical box. Strip outside jacket being careful not to cut through shielding of the two inner conductors.
13. Run a pigtail lead from the ceiling bracket (A) using cupped washer (L) and ground screw (M) to the junction box. Using suitable wire connectors (not provided) connect unshielded wire from supply wire (I) to all ground wires (bare copper or green shielded) (*Figure 5*).
14. Using suitable wire connectors (not provided) connect fixture wires to supply (wire with white tracer to white and wire with no tracer to black). **Caution:** Make sure wire connectors are twisted on securely, and no bare wire is exposed.
15. Thread canopy nipple (N) in to threaded hole directly in center of ceiling bracket (A).
16. Install canopy cover (O) on canopy nipple (N).
17. Thread lock up (P) on to canopy nipple (N). Tighten against canopy cover (O) until snug.
18. Refer to instructions following to install bulb and glass.



(Figure 4)



(Figure 5)



(Figure 6)

(continued)

Assembly & Installation Instructions

For Aura Pendant 13-8585

A257

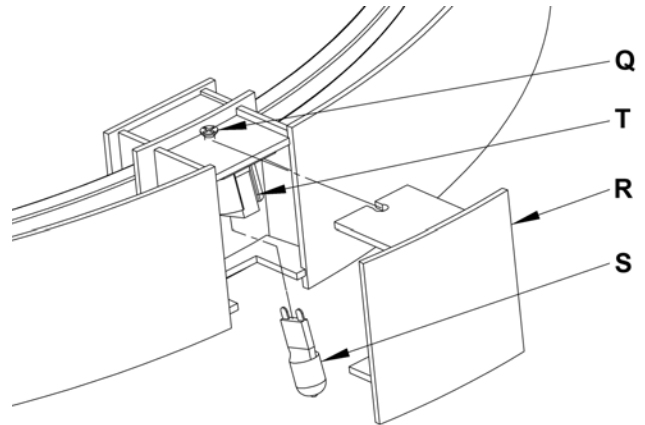
Page 3 of 3

Install Bulb (Figure 7)

Component Parts

- Q Flat Head Screw (6)
- R Bulb Cover Assembly (6)
- S Bulb (supplied) (6)
- T Socket (9)

1. Loosen flat head screw (Q) and slip bulb cover assembly (R) from fixture.
2. Install bulb (S) (supplied). *Be careful not to touch bulb with bare hands; oil from the hands will dramatically reduce bulb life.*
3. Install bulb cover assembly (R) and tighten flat head screw (Q).
4. Repeat steps for all six bulb locations.



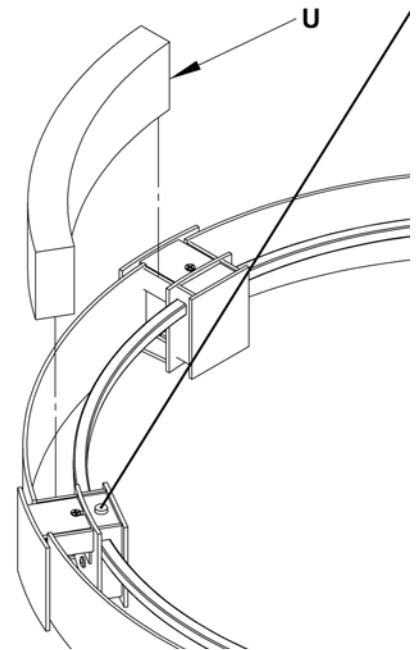
(Figure 7)

Install Glass (Figure 8)

Component Parts

- U Glass (6)

1. Slip glass (U) into slots in fixture between bulb locations.
2. Repeat for all six locations.
3. Restore electricity at the main breaker.



(Figure 8)

If you need further assistance, or find that you are missing any parts, please contact the dealer from which you purchased this product. We hope you enjoy your fixture!

* Hubbardton Forge will not be liable for injury or damage caused by improper installation, lamping or use of this fixture.