

Two-Tone Socket

Assembly Instructions



THIS PRODUCT MUST BE INSTALLED IN
ACCORDANCE WITH THE APPLICABLE
INSTALLATION CODE BY A PERSON FAMILIAR
WITH THE CONSTRUCTION AND OPERATION OF
THE PRODUCT AND THE HAZARDS INVOLVED

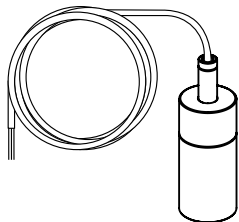
VIRO-0002



Scan to view online

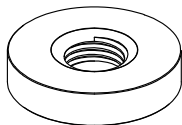
VIRO-0002 Parts List

Part Names and Quantities



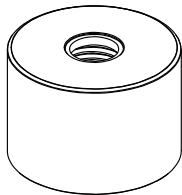
VIRO-PEN-0001

1 Socket + Cord



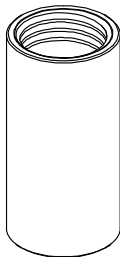
VIRO-COM-0005

1 Two-Tone Ring



VIRO-COM-0006

1 Two-Tone Socket Cap



VIRO-SKT-0004

1 Two-Tone Socket Stem

READ FIRST

BEFORE CUTTING THE CORD

To cut the cord, follow these steps to prevent the cord's cloth cover from fraying and to ensure successful assembly and installation.

1. Determine the position the cord hangs from the canopy. The cut position is 3 inches above that.



2. Wrap electrical tape around the cut position.



3. Cut the cord in the middle of the electrical tape and continue to assemble and install the fixture as shown in the instructions.



4. After the fixture is assembled and during canopy installation, remove the tape, strip the cord and wires, then connect them to your junction box's wires as shown in the instructions.

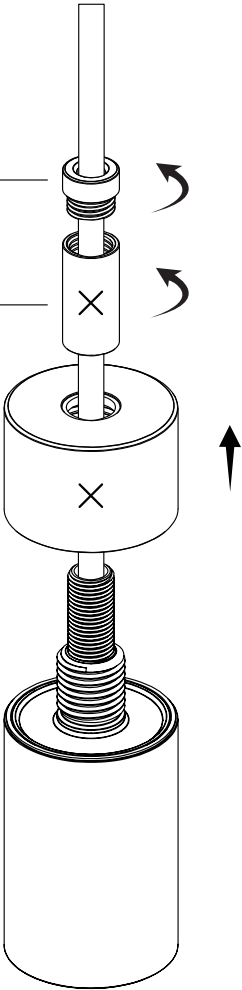
1. Disassemble VIRO-PEN-0001

Dissemble parts in the order shown

1. Keep Socket Stem Cap

2. Discard

3. Discard



2. Assemble VIRO-0002

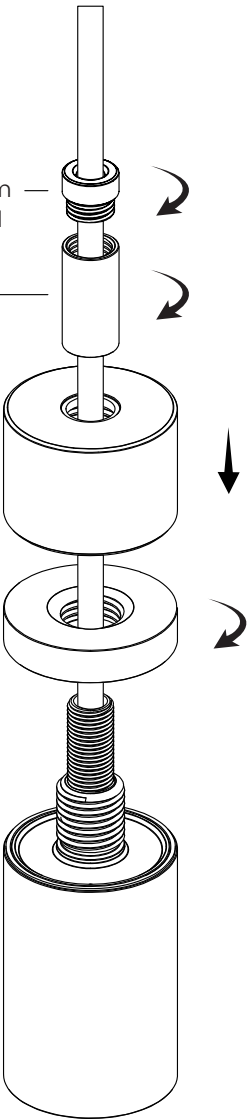
Assemble parts in the order shown

4. Assemble the Socket Stem —
Cap from **VIRO-PEN-0001**

3. Assemble the —
Two-Tone Socket Stem
VIRO-SKT-0004

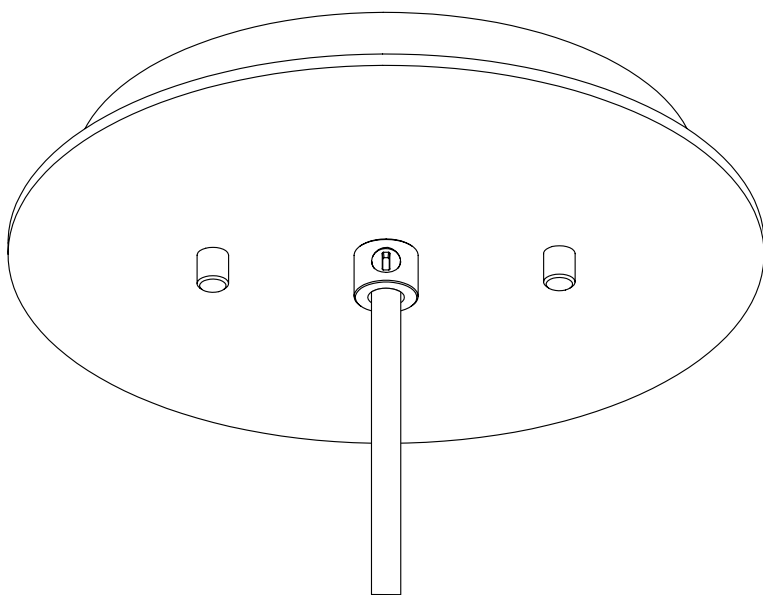
2. Assemble the —
Two-Tone Socket Cap
VIRO-COM-0006

1. Assemble the —
Two-Tone Ring
VIRO-COM-0005





VIRO Pendant Canopy



Single Canopy

Assembly Instructions

VIRO-CAN-0001



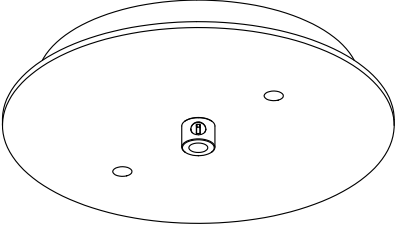
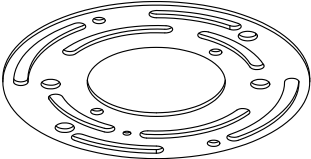
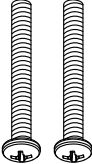
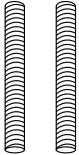


THIS PRODUCT MUST BE INSTALLED IN
ACCORDANCE WITH THE APPLICABLE
INSTALLATION CODE BY A PERSON FAMILIAR
WITH THE CONSTRUCTION AND OPERATION OF
THE PRODUCT AND THE HAZARDS INVOLVED



Scan to view online

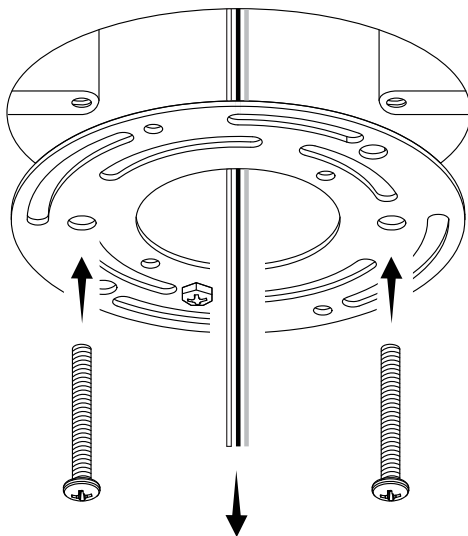
VIRO-CAN-0001

Part Names and Quantities

	<p>VIRO-CAN-0001</p> <p>Single Canopy</p>
	<p>1 Universal Mount</p>
	<p>2 8-32 Junction Box Screws</p>
	<p>2 Canopy Mount Threaded Rod</p>
	<p>2 Locking Nuts</p>
	<p>2 Wire Nuts</p>

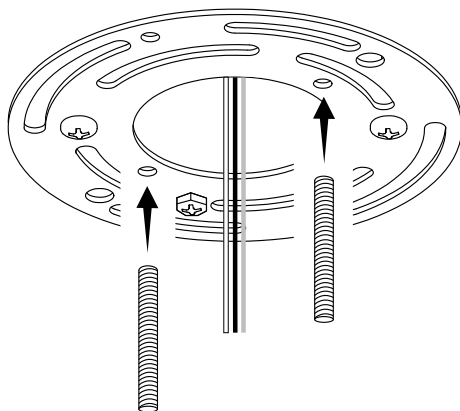
1. Install the universal mount

Screw the Universal Mount onto the ceiling junction box



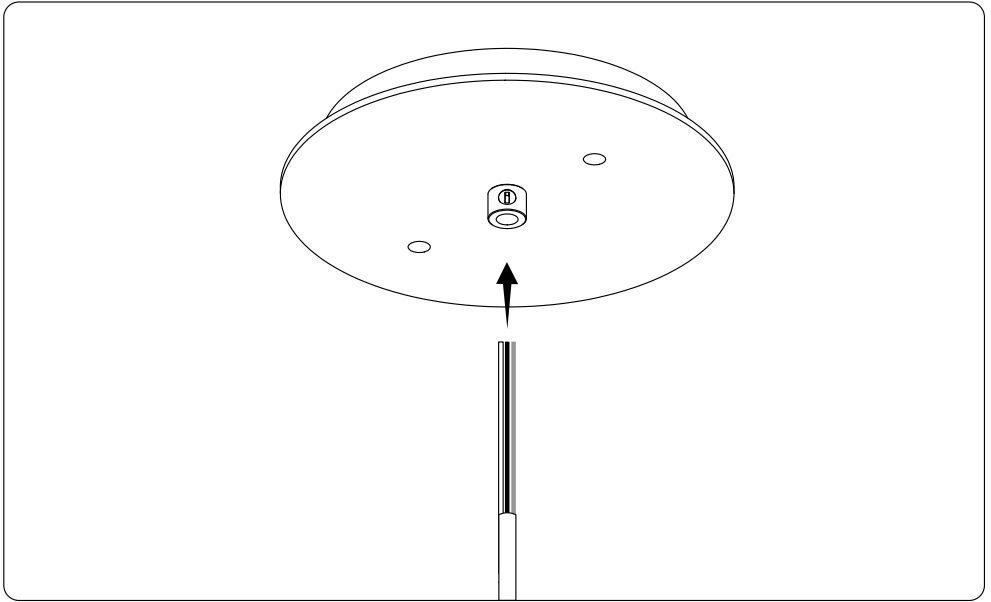
2. Install the canopy mounting rods

Screw the threaded rods into the universal mount



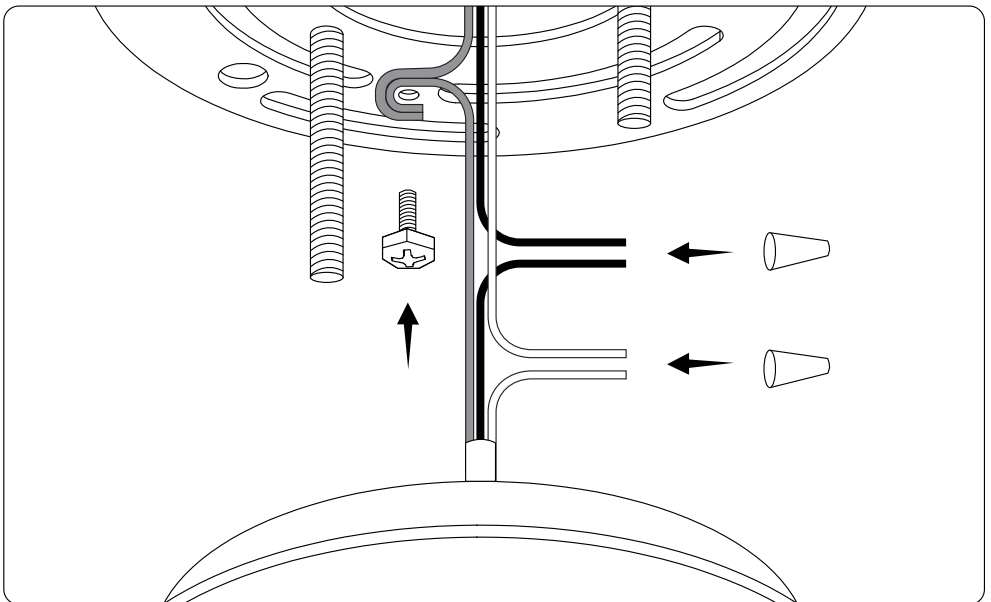
3. Install the cord into the canopy

Cut the cord to length, insert it into the canopy and lock it



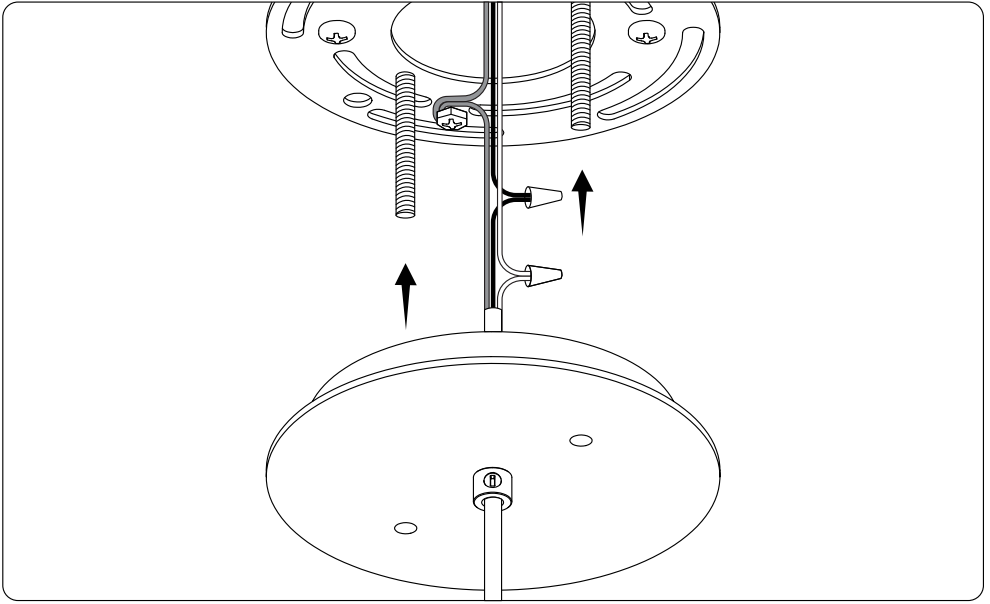
4. Connect the electric and ground wires

Connect ground wires to ground terminal and match power with power and neutral with neutral wires



5. Install the canopy

Align the canopy to the mounting rods and install



6. Lock the canopy in place

Screw the locking nuts onto the canopy mounting rods

