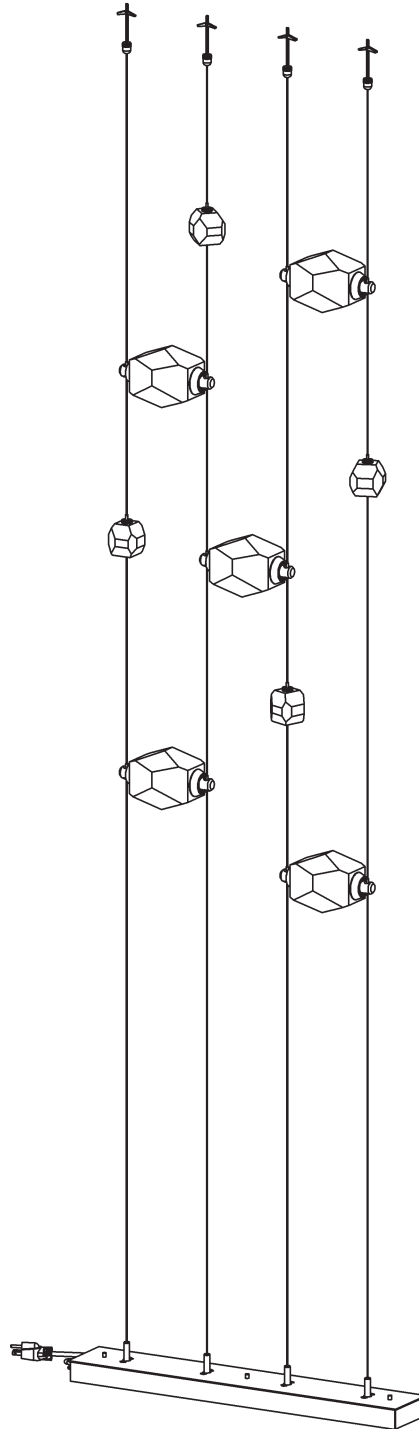


ASSEMBLY & INSTALLATION INSTRUCTIONS

C126

Gatsby Plug In - 4 Cable 5 Light



HUBBARDTON FORGE.

MODERN AMERICAN BLACKSMITHS | FINE, HAND CRAFTED LIGHTING
CASTLETON, VERMONT USA | HUBBARDTONFORGE.COM

57556

1 OF 8

Component Parts

A	Ceiling Gripper (4)
B	Threaded Adapter (4)
C	Toggle (4)
D	Screw (4)
E	Plastic Washers (4 sets)
F	Cable (4)
G	Base Assembly
H	Cover Plate
I	Knobs (3)
J	#10 Screws (4)
K	Threaded studs (3)
L	Crystals (5)
M	LED Module (5)
N	Crystal Retainer (10)
O	Module Gripper (10)
P	Crystal Module (5)
Q	Crystal Weight (4)
R	Weight Gripper (4)
S	Base Gripper (4)
T	Gripper Cover (4)
U	Tensioner Screw (8)
V	Plug (8)

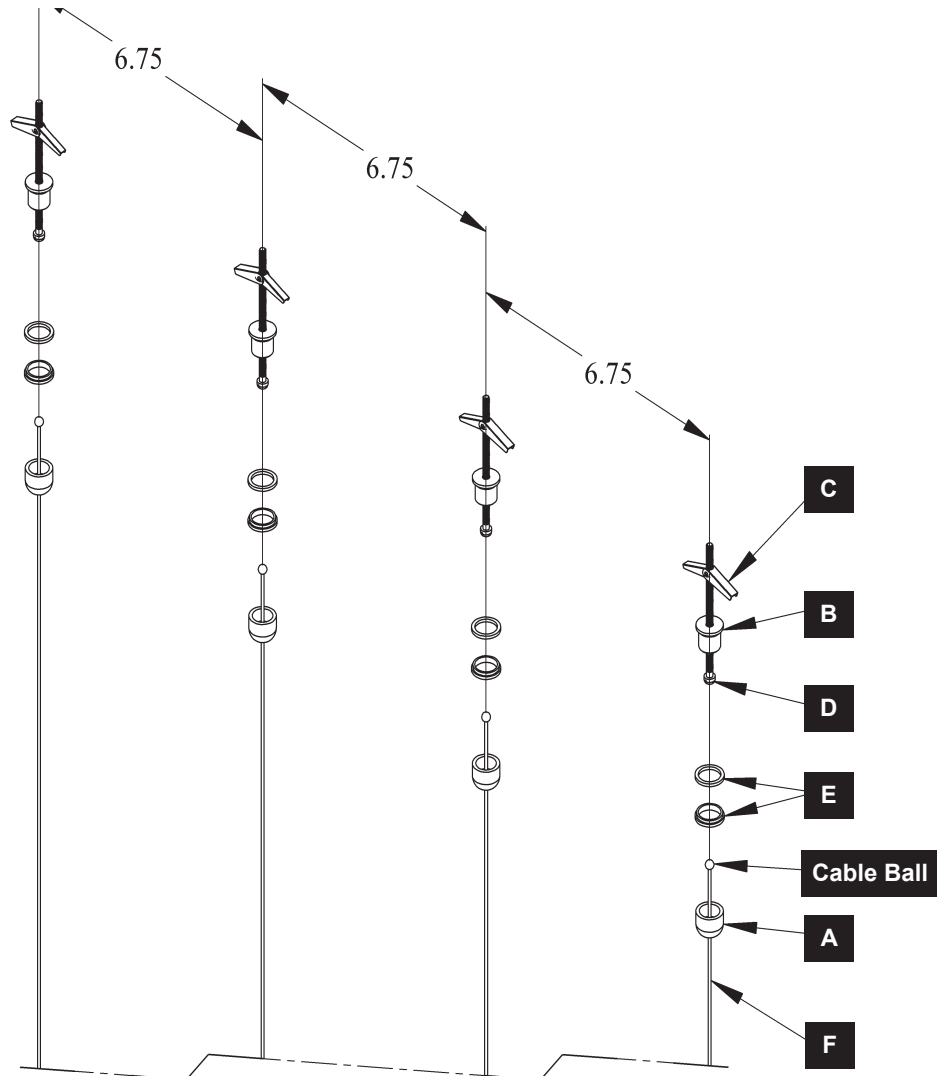


CAUTION: FAILURE TO INSTALL THIS FIXTURE PROPERLY MAY RESULT IN SERIOUS PERSONAL INJURY OR DEATH AND PROPERTY DAMAGE. We recommend installation by a licensed electrician. This product must be installed in accordance with applicable installation code(s), by a person familiar with the construction and operation of the product and the hazards involved.*

Install Ceiling Hardware & Cables (Figure 1)

1. Carefully unpack the fixture from carton.
2. Determine desired fixture location. With a pencil, mark the location of the anchor holes on the ceiling using measurements called out in Figure 1. Templates are located on page 8.
3. Drill 3/8" holes in the locations marked on the ceiling.
4. Unassemble ceiling gripper (A), threaded adapter (B), and set of plastic washer (E). Retain all parts for use in next steps.
5. Remove toggle (C) from screw (D) and set aside for later use.
6. Slip screw (D) provided, through threaded adapter (B) and thread toggle (C) onto screw (D).
7. Slip toggle (C) up through hole in ceiling.
8. Tighten screw (D) until threaded adapter (B) is tight to the ceiling. Be careful to not over tighten.

Note: We have provided screws with toggles for mounting the cables to the ceiling however, different materials and/or construction methods may require different fasteners. If in doubt, contact a qualified electrician.



(Figure 1)

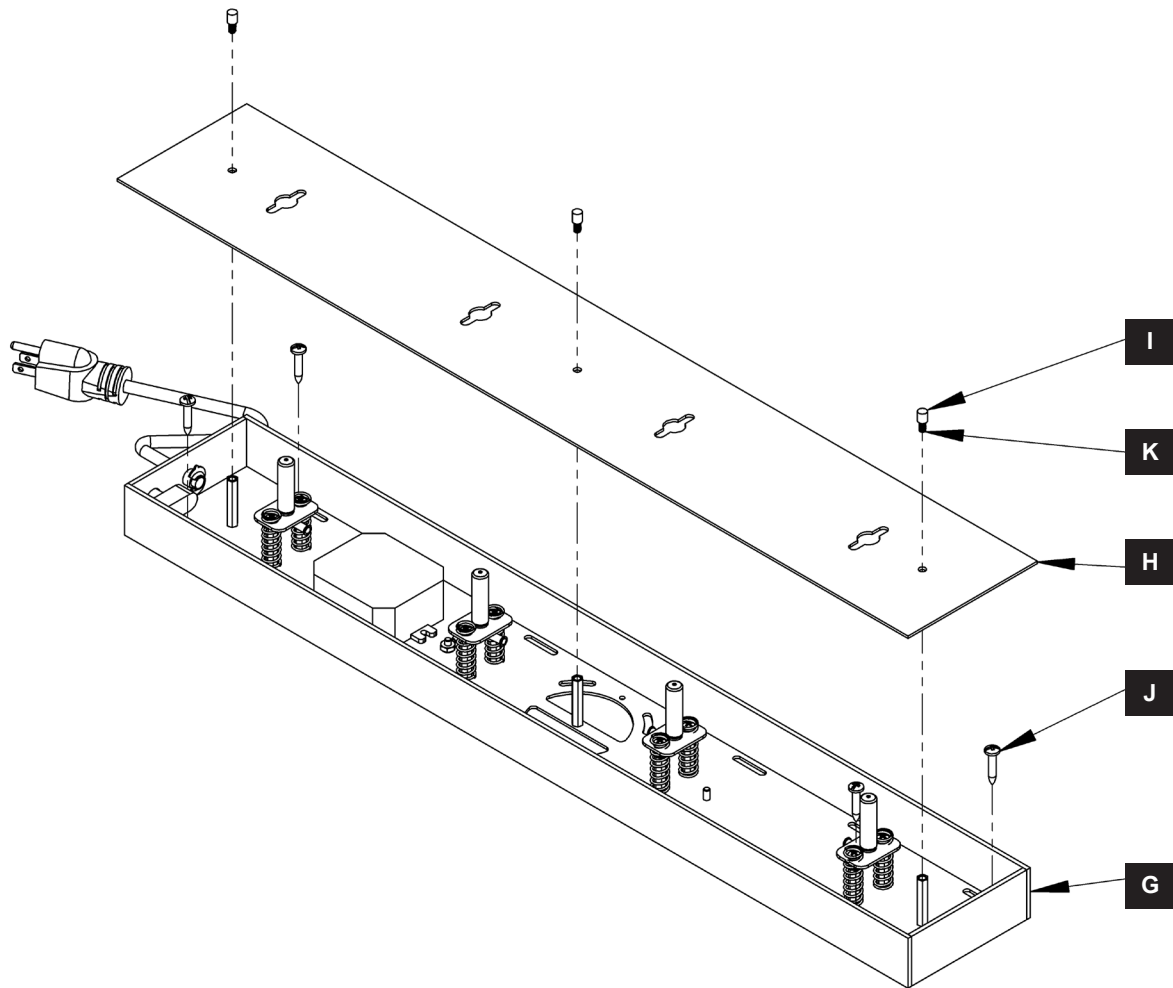
9. Locate cable (F). Slide cable through ceiling gripper (A) in direction shown in Figure 1. Cable ball should sit inside of ceiling gripper (A).
10. Slide plastic washers (E) over threaded adapter (B). Thread ceiling gripper (A) onto threaded adapter (B) and tighten.
11. Repeat for remaining cables (F).
12. Follow steps on the following page for installing base assembly.

Install Base Assembly (Figure 2)

1. Locate base assembly (G) in packaging.
2. Remove knobs (I) and separate cover plate (H) from assembly (G).
3. Position base assembly (G) under ceiling grippers (A). Be sure base will line up with cables as desired.
4. Using provided #10 screws (J), found in kit bag, fasten base assembly (G) to the floor.

Note: Base must be mounted to the floor. We have provided double sided tape as an alternate mounting method if mounting with screws is not a possibility. If dealing with a different mounting situation, please contact a contractor for installation methods for the base.

5. Slide cover plate (H) over threaded studs (K) until it rests on base assembly (G) and secure with knobs (I) and studs (K).
6. Complete steps on following page for installing crystal modules.



(Figure 2)

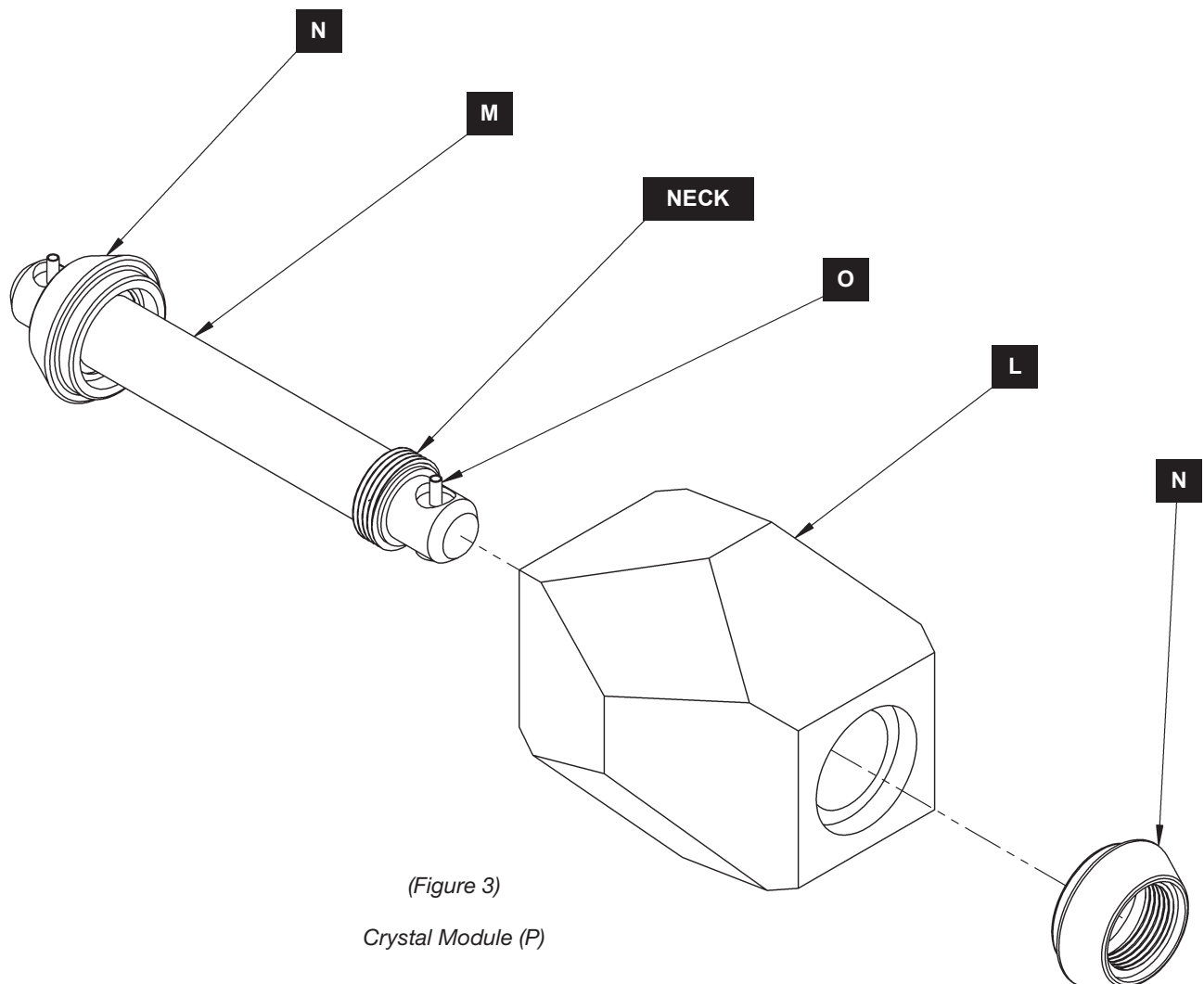


To Assemble Crystal Module *(Figure 3)*

1. Carefully unpack LED Module (M) and crystal (L).
2. Crystal retainers (N) are shipped installed on LED module (M). Remove one and set aside for use in the following steps.
3. Carefully slide LED module (M) through crystal (L) until installed crystal retainer (N) is fully seated in crystal (L). Secure LED module (M) by threading second crystal retainer (N) onto neck.

NOTE: IT MAY BE NECESSARY TO PUSH IN PLUNGER ON MODULE GRIPPER (O) TO ALLOW RETAINER TO START THREADING ONTO NECK.

4. Repeat for remaining crystals (L) and LED modules (M).
5. These assembled parts will now be referenced as crystal modules (P)
6. Continue install on following pages.



(Figure 3)
Crystal Module (P)

Install Crystals *(Figures 4 & 5 - on following page)*

1. One module gripper (O) on each crystal module (P) will be marked with a (+) label.
2. Base grippers (S) are marked with (+) and (-) labels. Align module gripper (O) with (+) label with a (+) cable.
3. Slide crystal module (P), plunger end first, up appropriate cables (F). Repeat with remaining crystal modules (P) and locate in desired orientation.

Note: Be sure (+) module grippers are on a (+) cable.

4. Install crystal weights (Q) onto cable (F) by pushing plunger end of weight gripper (R) onto cable to desired location.

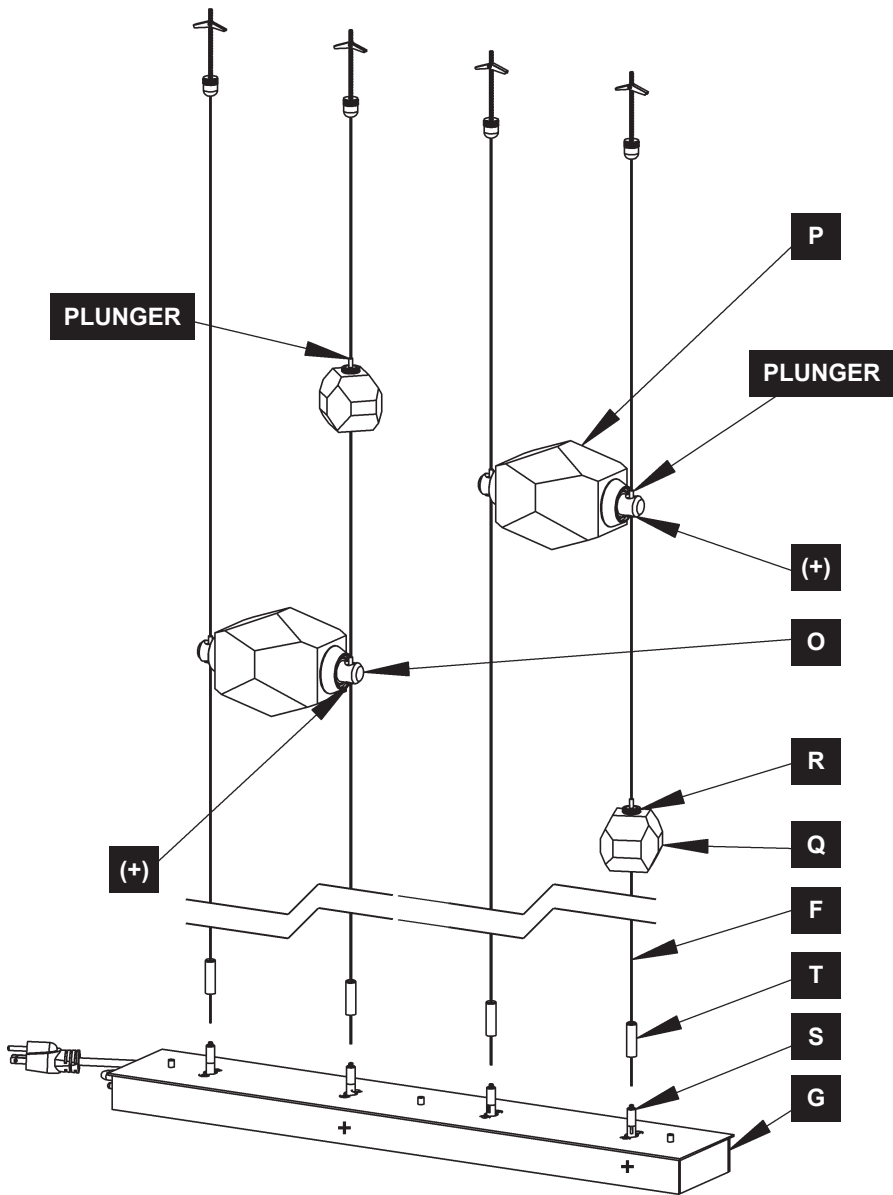
Note: See front page of instructions for designer preference locations

5. If crystal module (P) or crystal weight (Q) needs to be lowered, push in on the plunger to release cable, hold in, and move to desired location.
6. Remove gripper cover (T) and slide up cable (F), small hole first.
7. Slide cable (F) into base gripper (S) until cable exits side of gripper. Pull cable (F) through until tight.
8. Cut the excess cable (F) as close to the slot in gripper (S) as possible.

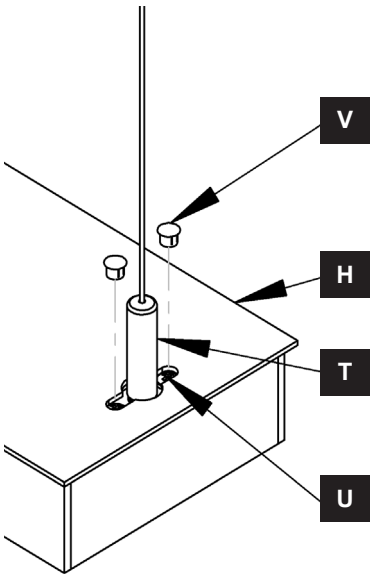
Note: *Fixture may be tested before cutting cables as long as excess cables do not touch each other or the fixture when testing the fixture's operation.*

9. Thread gripper cover (T) onto gripper (S).
10. Repeat steps 6-9 for remaining cables (F).
11. Refer to Figure 5 for following steps:
12. Next to each base gripper (s) are two tensioner screws (U). Using phillips head screwdriver (not provided), tighten these screws evenly to create tension on the cable (F).
13. Install plastic plugs (V) into slots in cover plate (H) to hide tensioner screws (U). Be sure feet on plastic plugs (V) are facing sides of slot for better engagement.
14. Plug in power cord.
15. On/Off switch is located on end of fixture, near power cord.





(Figure 4)



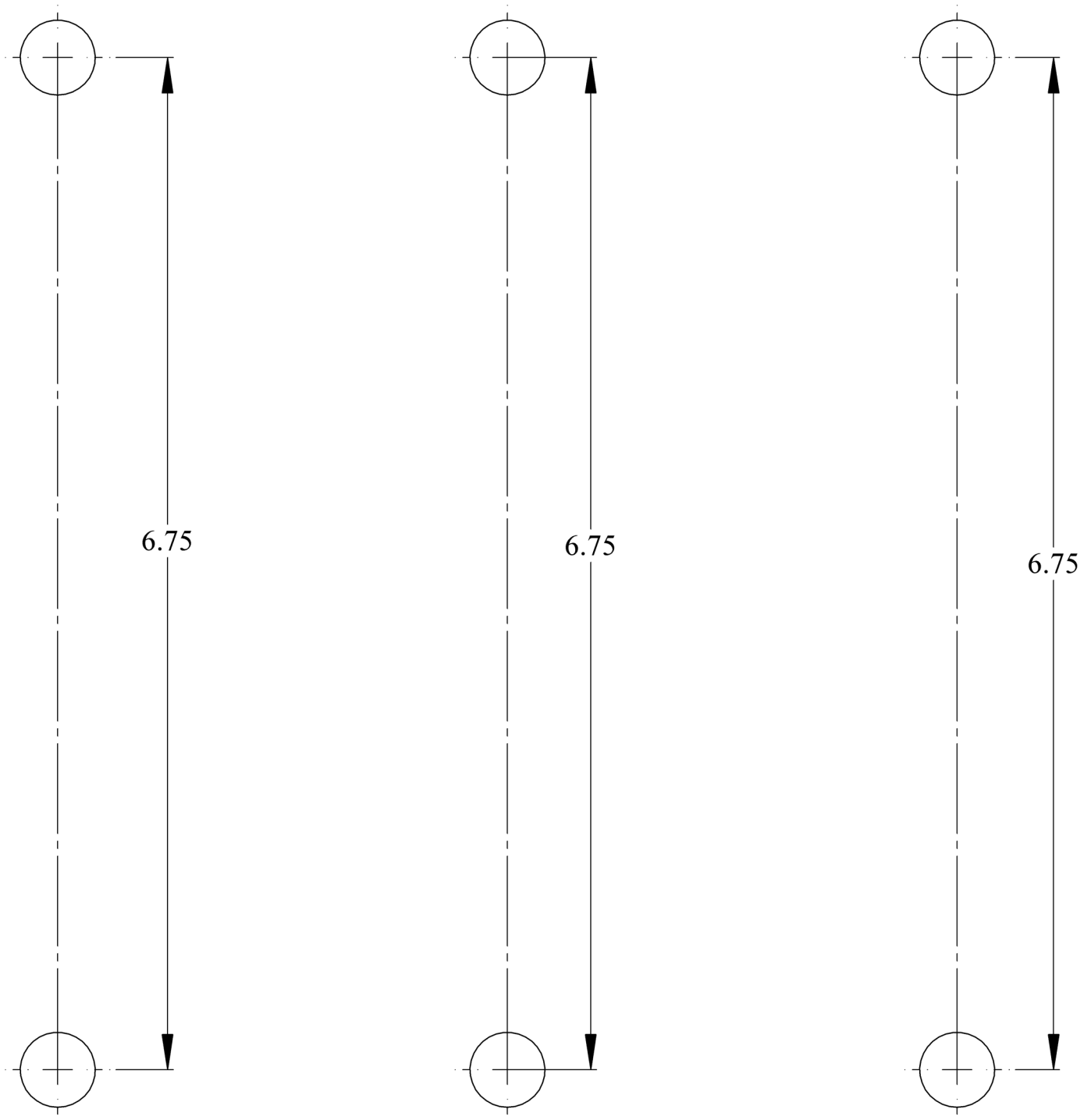
(Figure 5)

ASSEMBLY & INSTALLATION INSTRUCTIONS

C126

Gatsby Plug In - 4 Cable 5 Light

Templates



If you need further assistance, or find that you are missing any parts, please contact the dealer from which you purchased this product. We hope you enjoy your fixture!

** Hubbardton Forge will not be liable for injury or damage caused by improper installation, lamping or use of this fixture.*



HUBBARDTON FORGE.

MODERN AMERICAN BLACKSMITHS | FINE, HAND CRAFTED LIGHTING
CASTLETON, VERMONT USA | HUBBARDTONFORGE.COM

57556

8 OF 8