



CARE INSTRUCTIONS

FRAME

For dusting and light cleaning use a soft, dry cloth. For further cleaning, use a soft cloth that is firmly wrung in clean water for gently wiping the surface, and then immediately use a dry cloth to wipe the surface again. If more thorough cleaning is necessary, use a mild liquid soap dissolved in water on a firmly wrung cloth to wipe the frame. Afterwards, repeat the process with clean water as described above.

MARBLE

For marble maintenance, see the included marble instruction sheet.



For enquiries contact GUBI A/S - CVR: 17940384
Klubiensvej 7-9, 2150 Nordhavn, Copenhagen, Denmark
T +45 69 15 60 60 - order@gubi.com
GUBI.COM

16-20-500-02 Mounting Instructions GUBI Dining Table.

GUBI

ASSEMBLY INSTRUCTIONS

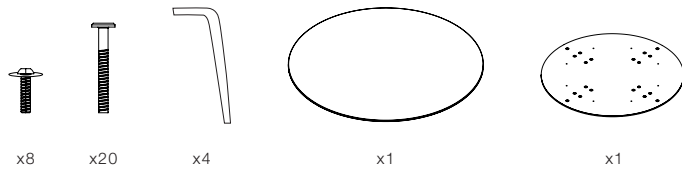
for

GUBI DINING TABLE

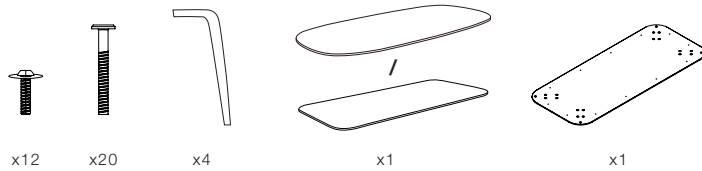


CONTENTS (ROUND)

GUBI DINING TABLE



CONTENTS (ELLIPTICAL/ RECTANGULAR)

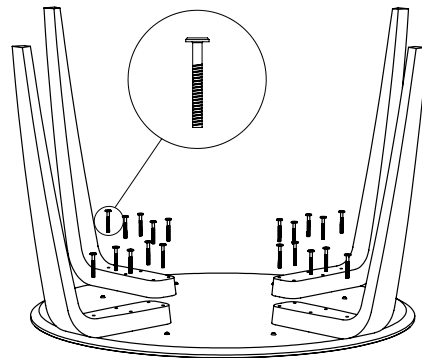
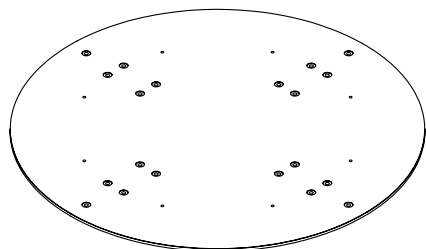


1.

Place the mounting plate on a blanket on the floor or a table with the painted side upwards.

2.

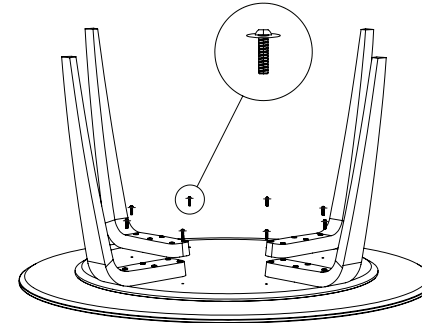
Screw in the legs with the 20x longer machine screws in the threaded holes.



3.

Make sure the marble is laying totally flat. The top may not lean only on the edge!

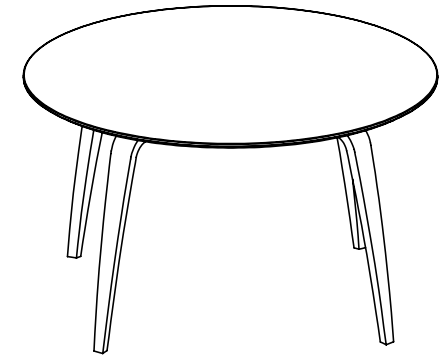
Place the marble plate with the thread holes upwards. Align the frame with the threaded holes in the marble plate. Mount the mounting plate with legs on the marble plate with the shorter machine screws.



4.

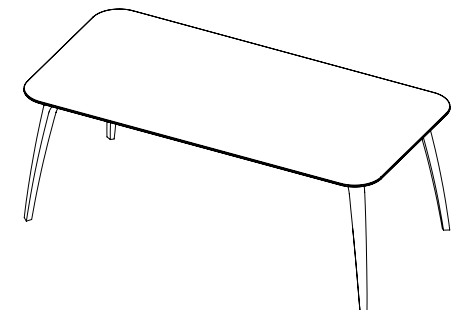
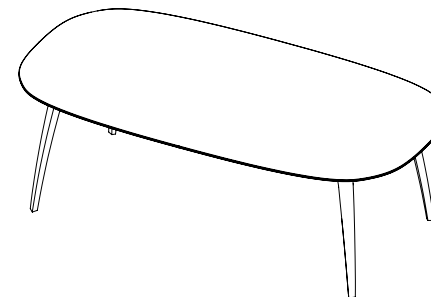
Turn the table around. When turning the table around, do not lean all the weight of the table on a single/ two legs. Wait until all 4 legs can be placed on the floor.

Finished table:



Elliptical/ Rectangular

Same procedure for elliptical/ rectangular table.
Finished table:



CAUTION: DO NOT APPLY HEAVY WEIGHT TO THE TABLE!

(i.e. do not sit or stand on the table.)