

UTTERMOST

ASSEMBLY INSTRUCTIONS

21640

WARNING: TO AVOID RISK OF ELECTRICAL SHOCK, BE SURE TO SHUT OFF WHILE POWER BEFORE INSTALLING OR SERVICING THIS FIXTURE.

We suggest a licensed professional electrician for installation

Installation Steps

1. Turn power off at fuse or circuit box before starting installation process.
2. Carefully unpack your new fixture and lay out all the parts on a clear surface.
3. Remove the Ball finial under the Canopy from the Mounting Screws, and take out the Universal Bar. Attach the Universal Bar to the Outlet Box by using two Outlet Box Screws. (See Figure1)
4. Rotate Metal Rod E into H, Metal Rod F into I, Metal Rod G into J tightly as these are the fixture body rods. To adjust for additional height choose the suitable number of Metal Rods and install the Metal Rod A,B,C,D into the coupling as needed. If swivel is needed for installation install into selected rods if needed. Remove excess wire.
5. Install the Ground Wire in the Universal Bar with the supplied Green Ground Screw.
6. Place the null wire ,white wire evenly against the null wire from the Outlet Box and place the live wire,black wire evenly against the live wire from the Outlet Box. (Connecting the Wire--- See Figure 2)
Carefully tuck them carefully inside the Outlet Box.
7. Attach the Canopy to the Mounting Screws and secure with two Ball Finials(See Figure 1)
8. Install 14*25W,E12 bulbs(Type G)(not Included) into the socket of the fixture,in accordance with the fixture's specifications.

DO NOT EXCEED THE MAXIMUM WATTAGE RATING!

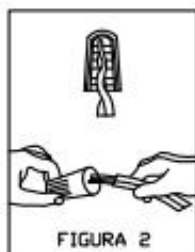
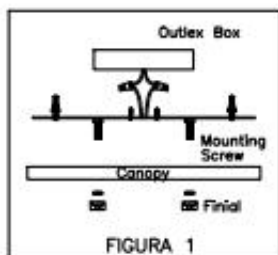
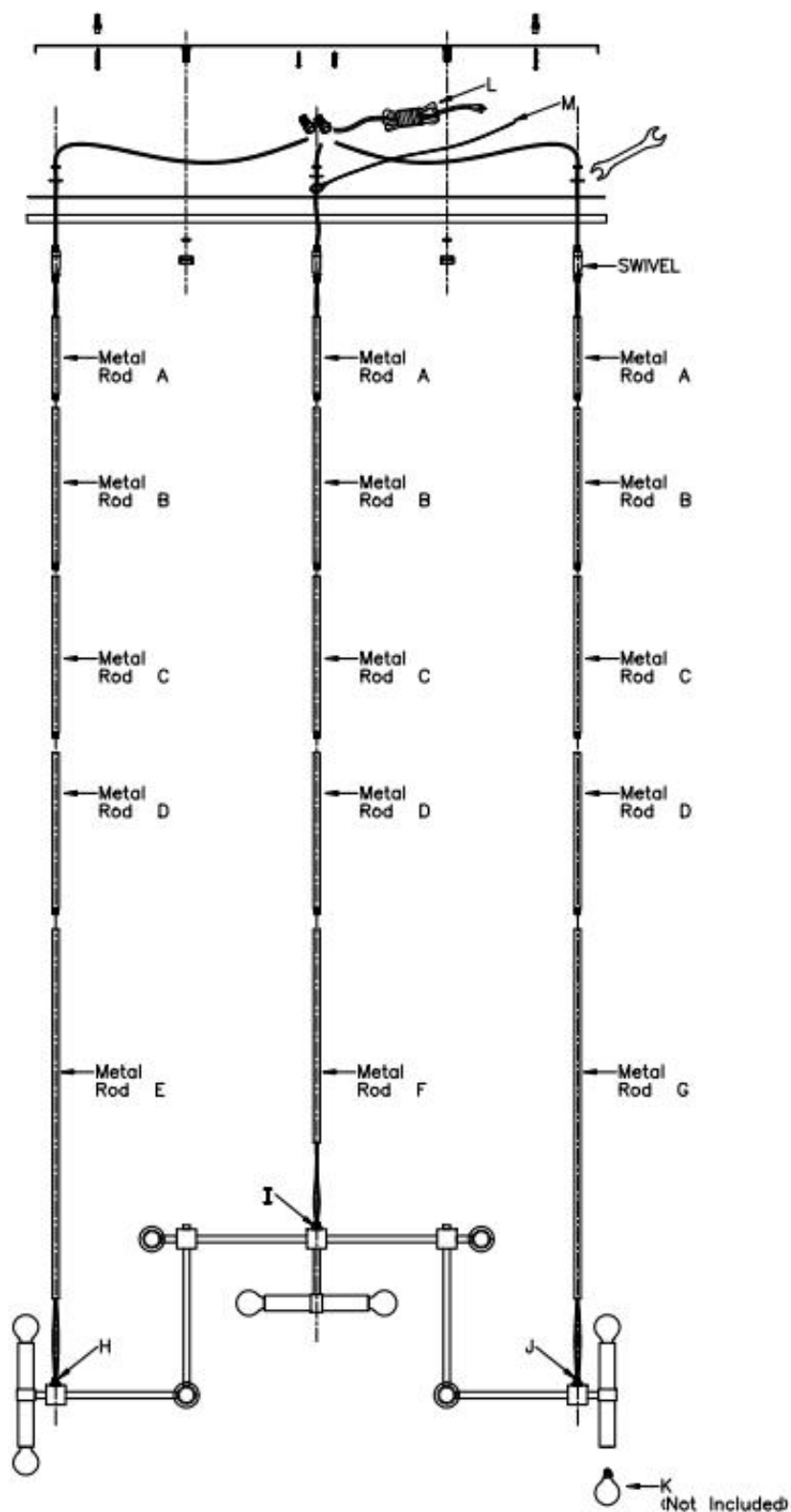
Swivel is included in hardware pack so you can use it if needed only.

PO BOX 558/3325 GRASSY HILL RD ROCKY MOUNT VIRGINIA 24151

www.uttermost.com

UTTERMOST

ASSEMBLY INSTRUCTIONS



PO BOX 558/3325 GRASSY HILL RD ROCKY MOUNT VIRGINIA 24151

www.uttermost.com