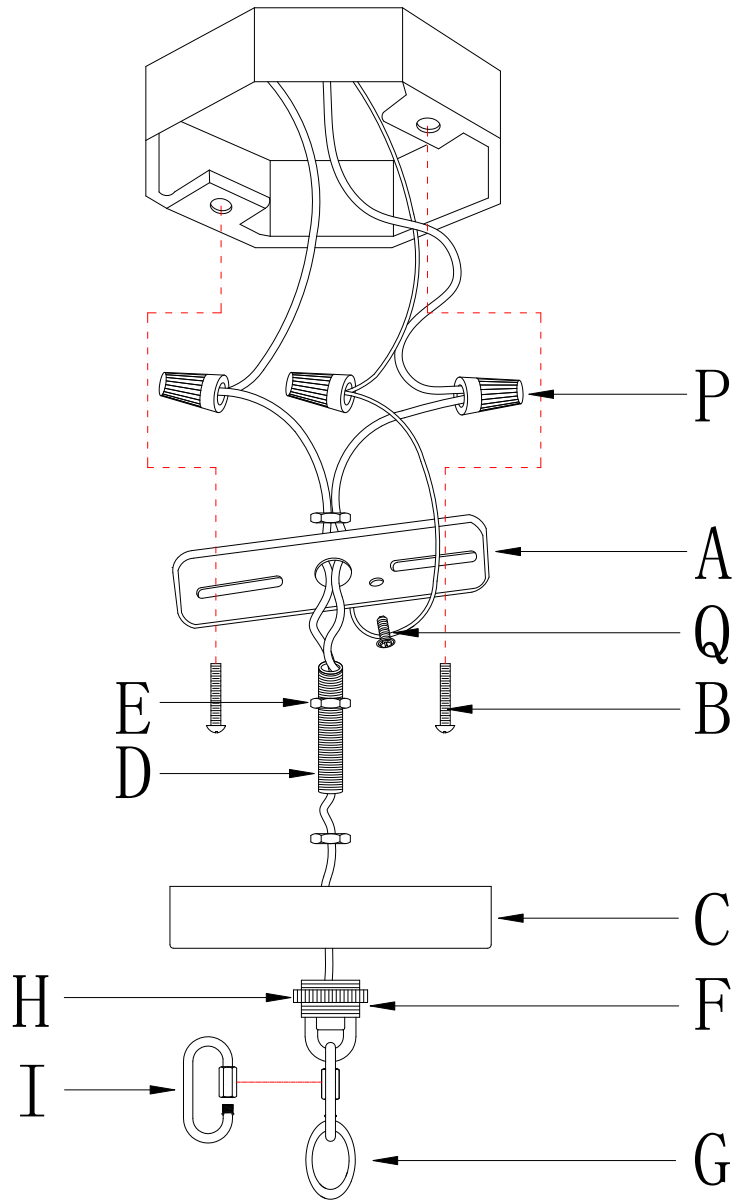
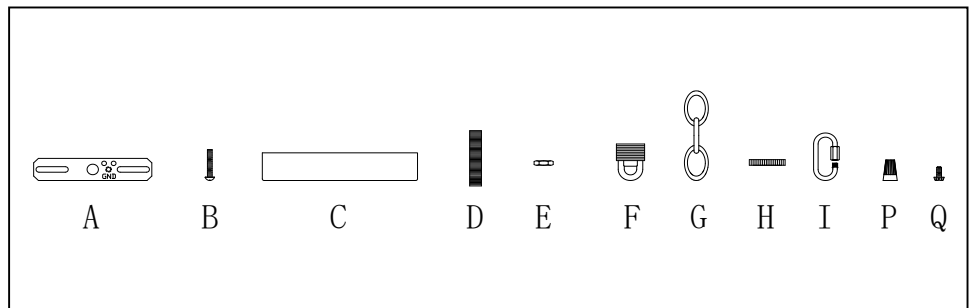


Fig.3



a. Hardware Bag:

- A.Cross bar*1
- B.Outlet box screw*2
- C.Canopy *1
- D.All Thread*1
- E.Hex Nut*3
- F.Ceiling Loop*1
- G.Chain*1
- H.Lock Collar*1
- I.Quick Link*2
- P. Wire connectors*3
- Q. Ground screw *1



INSTALLATION INSTRUCTIONS

Item#2486-613(Pendant For Chain hang)

READ AND SAVE THESE INSTRUCTIONS

WARNING! SHUT POWER OFF AT FUSE OR CIRCUIT BREAKER.

AVERTISSEMENT! COUPER LE COURANT AU NIVEAU DES FUSIBLES OU DU DISJONCTEUR.

PREPARATION (Fig. 1)

1. Shut off power at the fuse box or circuit breaker box and remove the old fixture including the mounting hardware.
2. Carefully unpack your new fixture and lay out all the parts in a clean area. Take care not to misplace any small parts necessary for installation.

ASSEMBLING THE FIXTURE (Fig.1&Fig. 3)

3. Screw cap (O) and chain loop (J) to all thread on top of fixture (K).
4. Thread all thread (D) into ceiling loop (F) and tighten with hex nut (E).
5. Thread the other end of all thread (D) into crossbar (A) and tighten with hex nut (E). Note: The length of all thread (D) into crossbar (A) may be adjusted if necessary.
6. Take crossbar assembly and mount it to junction box (not included) with junction box screws (Size: #8-32N*L0.5"). The side of crossbar marked with "GND" must face out.
7. Attach quick link (I) to chain loop (J) and chain (G). Quick link must be completely closed when installed. By measuring, determine the correct number of links needed for the desired hanging height. Use a pair of chain pliers to open one end link of the chain and discard excess chain. Slide lock collar (H) and canopy (C) over chain (G). Attach quick link (I) to the other end of chain (G). Raise the fixture and attach quick link (I) to ceiling loop (F), then close the quick link. Carefully lace fixture wires through chain links and pull until tight. Feed wires through the lock collar, canopy, ceiling loop and all thread, then pull until tight.

CONNECTING THE WIRES (Fig. 2)

8. Connect the electrical wires as shown in Fig.2, making sure that all wire connectors are secured. If your junction box has a ground wire (green or bare copper), connect the fixture's ground wire to it. Otherwise, connect the fixture's ground wire directly to the crossbar (A) using the green screw provided. Tuck wire connections neatly into junction box.

COMPLETING THE INSTALLATION (Fig. 1)

9. Raise canopy (C) over ceiling loop (F) and secure with lock collar (H).
10. Install (6) six medium base bulbs (L) up to 60 watts each or CFL or LED equivalent (not included) in accordance with the fixture specification—**DO NOT EXCEED THE MAXIMUM WATTAGE RATING! (NE PAS DEPASSER LA PUISSANCE NOMINALE MAXIMALE!)**
11. Hang glass panels (M) (10pcs string ①, 14pcs string ② and 10pcs string ③) onto hooks (N).

Your installation is now complete. Return power to the junction box and test the fixture.

Note: Illustration (Fig. 1) on this manual is for installation purposes only. It may or may not be identical to the fixture purchased.

Notice: It is important to use proper chain pliers (not included) To OPEN and CLOSE the chain included with this fixture. Do not open them with other tools that may twist or stress the chain links. It is important to use proper chain pliers like the ones shown in the diagram.

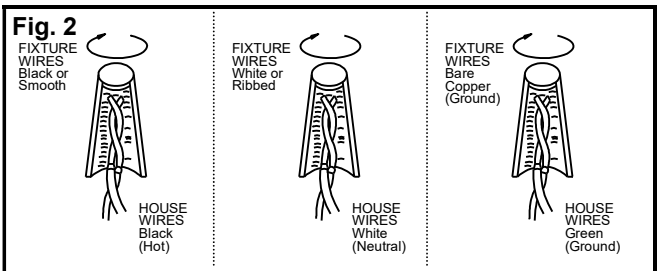
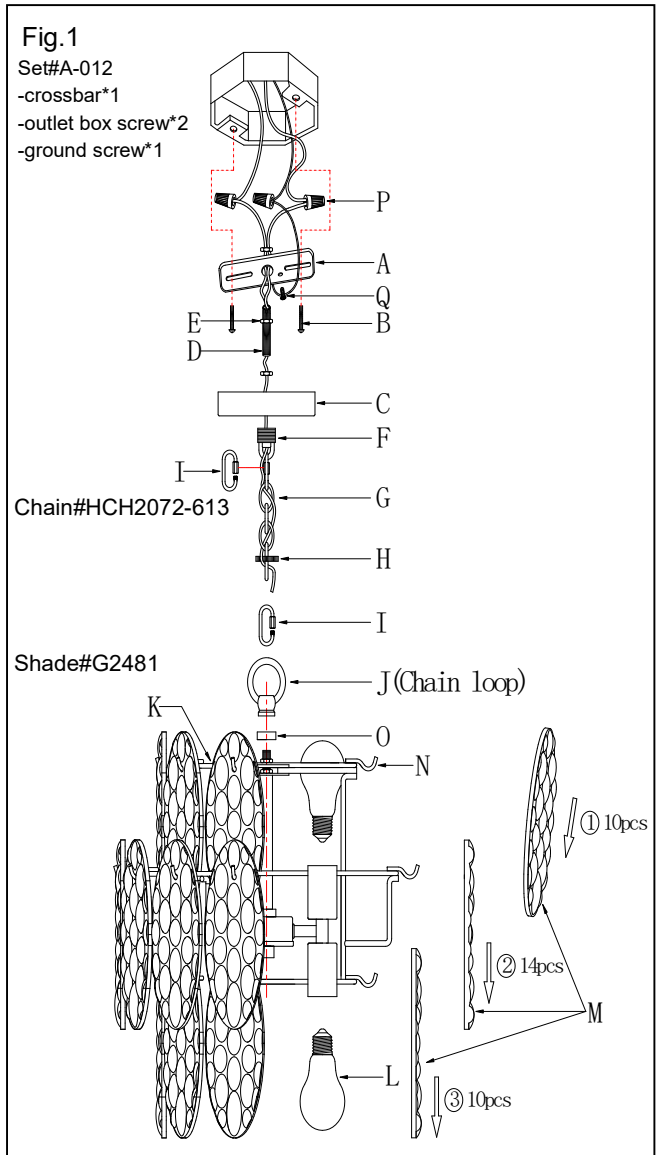
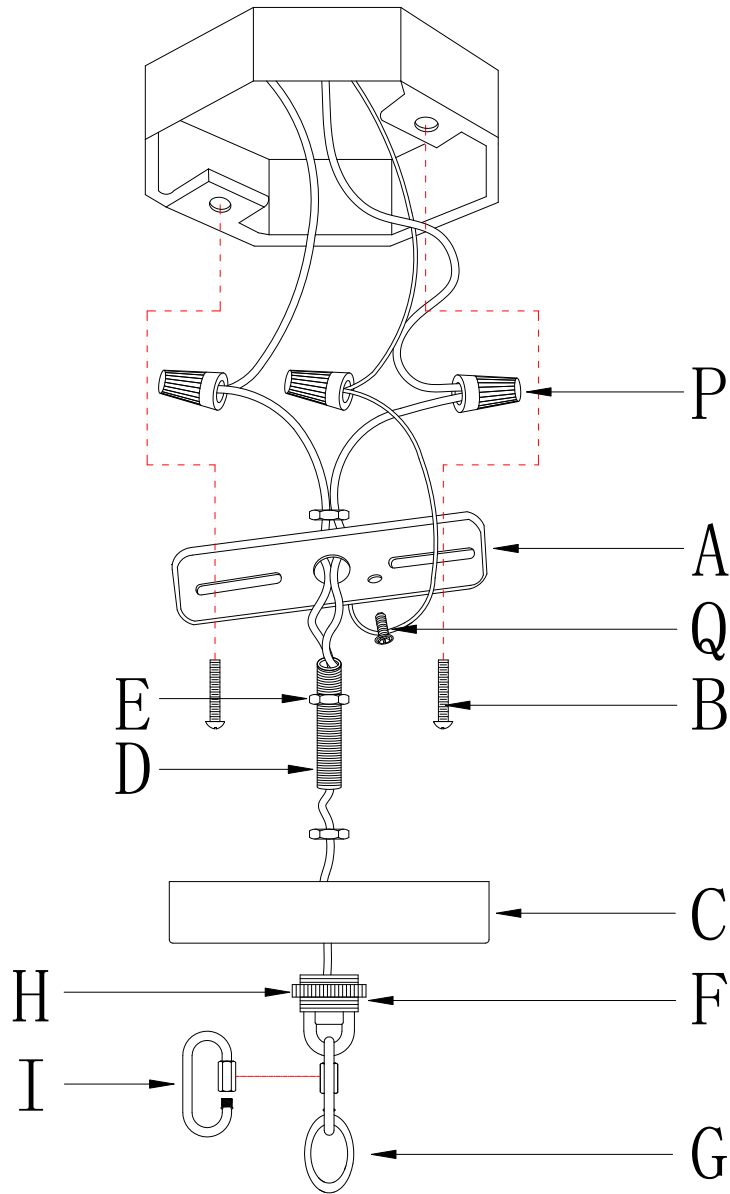
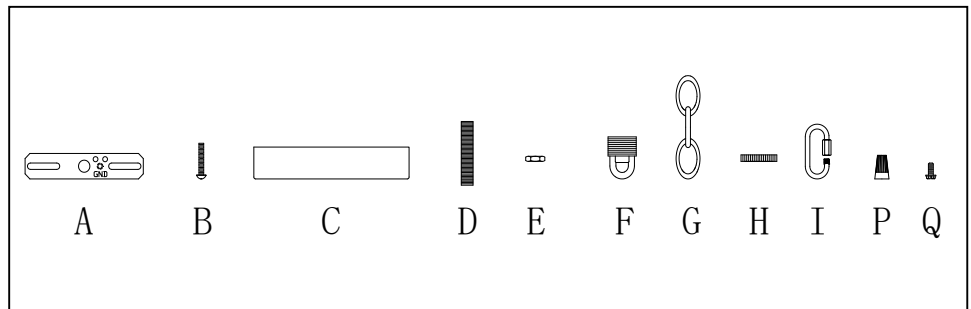


Fig.3



a. Hardware Bag:

- A.Crossbar*1
- B.Junction box screw*2
- C.Canopy *1
- D.All Thread*1
- E.Hex Nut*3
- F.Ceiling Loop*1
- G.Chain*1
- H.Lock Collar*1
- I.Quick Link*2
- P.Wire connectors*3
- Q.Ground screw *1



INSTALLATION INSTRUCTION

Item#2488-613(Pendant For Chain hang)

READ AND SAVE THESE INSTRUCTIONS

WARNING! SHUT POWER OFF AT FUSE OR CIRCUIT BREAKER.

AVERTISSEMENT! COUPER LE COURANT AU NIVEAU DES FUSIBLES OU DU DISJONCTEUR.

PREPARATION

1. Shut off power at the fuse box or circuit breaker box and remove the old fixture including the mounting hardware.
2. Carefully unpack your new fixture and lay out all the parts in a clean area. Take care not to misplace any small parts necessary for installation.

ASSEMBLING THE FIXTURE (Fig.1)

NOTE: For a safe and secure installation, the fixture must be installed by means of support that is independent of the junction box.

(Note: For heavy fixture, hickey and cable are provided, other required hardware to be supplied by installer)

3. Provide a 1/4" IPS pipe with one end securely mounted to a beam or a structural member. The other end should protrude through the center of the outlet box as shown.
4. Assemble the ceiling loop, all thread, washer, hex nuts, and hickey to the center 1/4 IPS support pipe and adjust the overall length to allow the lock collar to hold the canopy flush to the ceiling. When the adjustments have been completed, secure the three hex nuts as shown.

HANGING THE FIXTURE (Fig.1)

5. Screw cap (E) and chain loop (A) to the all thread on top of fixture.
6. Attach the chain to the fixture loop using the quick link. The quick link must be completely closed when installed. By measuring, determine the correct number of links needed for proper hanging height. Use a pair of chain pliers to open one end link of the chain, and discard excess chain, slide the lock collar and canopy over the chain, then attach the other end link of the chain to the ceiling loop using the other quick link.
7. Lace the fixture wires, ground wire and safety cable through the chain, lock collar, canopy, ceiling loop and all thread, exiting through the side of the hickey. Run the cable through the top of the outlet box and secure to a structural member. Tighten the set screw assembly as shown.

CONNECTING THE WIRES (Fig. 3)

8. Connect the electrical wires as shown in making sure that all wire connectors are secured. If your junction has a ground wire (green or bare copper), connect the fixture's ground wire to it. After wires are connected, tuck them carefully into the ceiling junction box.

COMPLETING THE INSTALLATION (Fig.1&Fig.2)

9. Raise canopy over ceiling loop and secure with lock collar. (Fig.1)
 10. Install (8) eight medium base bulbs (B) up to 60 watts each or CFL or LED equivalent (not included) in accordance with the fixture specification—**DO NOT EXCEED THE MAXIMUM WATTAGE RATING! (NE PAS DEPASSER LA PUISSANCE NOMINALE MAXIMALE!)**
 11. Hang glass panel (C) (9pcs string ①, 14pcs string ②, 19pcs string ③, 14pcs string ④, 9pcs string ⑤) on to hooks (D). (Fig.2)
- Your installation is now complete. Return power to the junction box and test the fixture.

Note: Illustration (Fig. 1) on this manual is for installation purposes only. It may or may not be identical to the fixture purchased.

Notice: It is important to use proper chain pliers (not included) To OPEN and CLOSE the chain included with this fixture. Do not open them with other tools that may twist or stress the chain links. It is important to use proper chain pliers like the ones shown in the diagram.

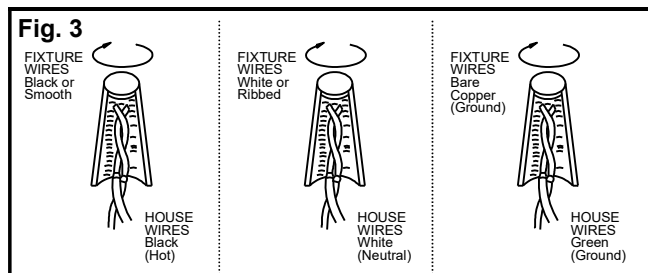
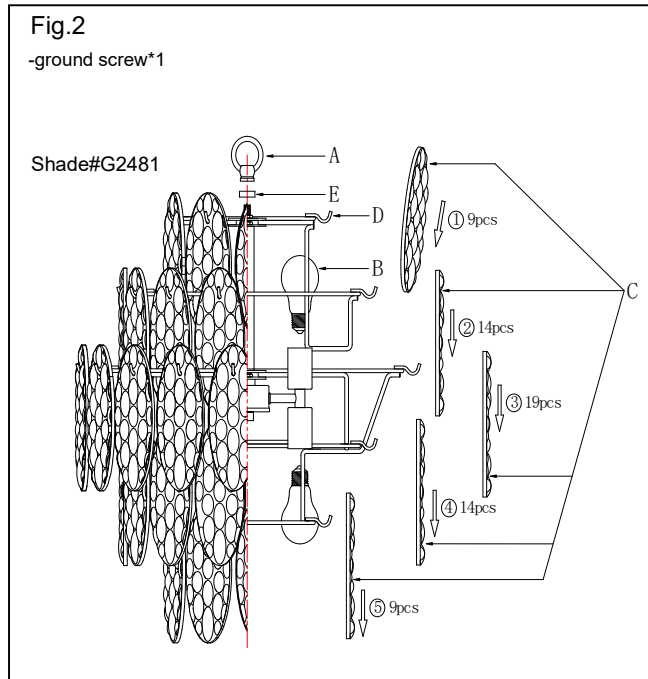
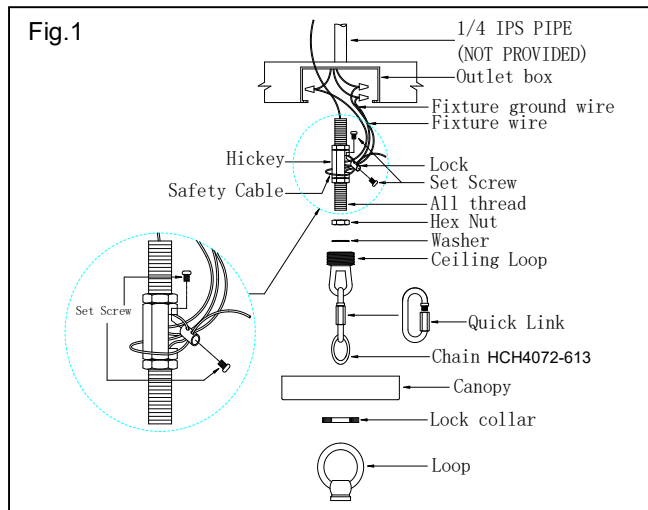
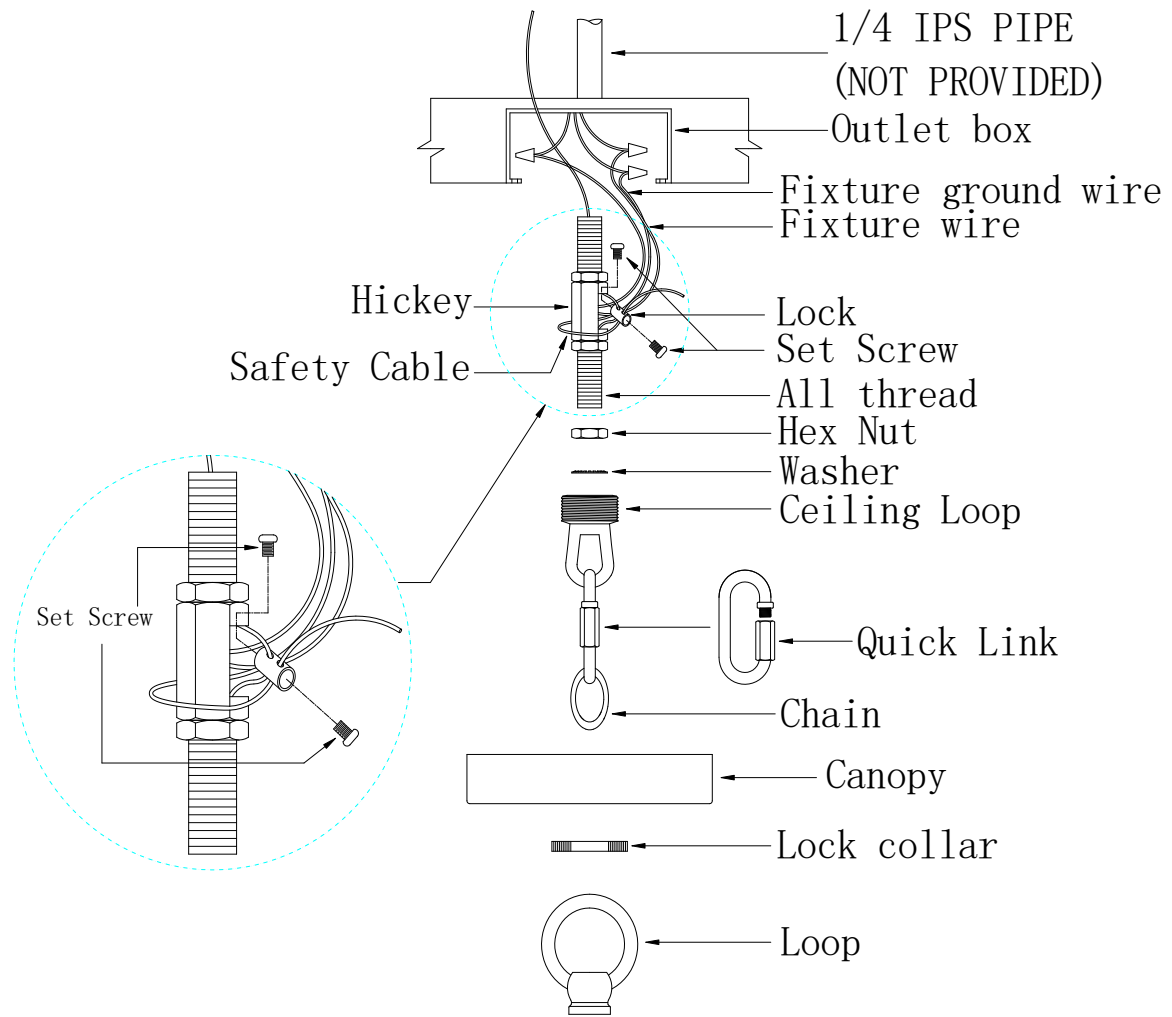


FIG.4



- | | | |
|-------------------|------------------|-----------------------|
| 1. Canopy*1 | 6. Hex nut*3 | 11. Wire connectors*3 |
| 2. Ceiling loop*1 | 7. Hickey*1 | 12. Set screw*2 |
| 3. Lock collar*1 | 8. Lock*1 | |
| 4. All thread*1 | 9. Chain*1 | |
| 5. Washer*1 | 10. Quick link*2 | |