



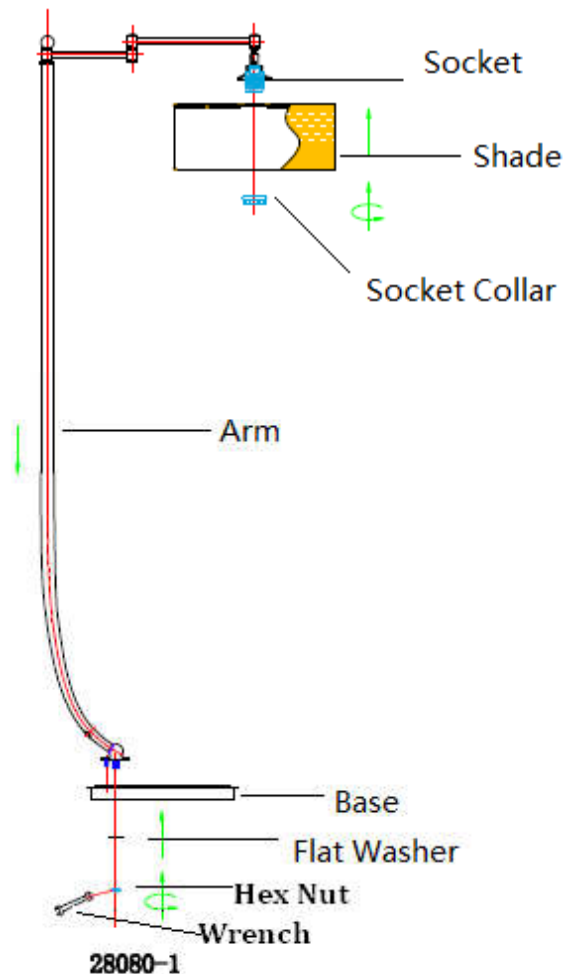
UTTERMOST

ASSEMBLY INSTRUCTIONS

STYLE# 28080-1

Careful unpack all lamp parts from the carton.

1. Place the Base in an upright position on the floor
2. Insert the Arm into the top of the Base while pulling excess cord where it exits the Base. Attach flat washer and Hex nut to the threaded rod of Arm. The Flat Washer and Hex Nut are pre-positioned on the cord. Tighten the Hex Nut by using wrench enclosed in the parts bag.
2. Position the Socket through the hole on the top of the Shade. Thread the Socket Collar onto the Socket to secure them. Hand tighten until snug.
4. Install correct Bulbs referring to fixture markings and /or labels for maximum wattage. (Not Included)



IMPORTANT SAFETY INSTRUCTIONS

This portable lamp has a polarized plug (one blade is wider than the other) as a safety feature to reduce the risk of electric shock. This plug will fit in a polarized outlet only one way. If the plug does not fit fully in the outlet, reverse the plug. If it still does not fit, contact a qualified electrician. Never use with an extension cord unless plug can be fully inserted. Do not attempt to defeat this safety feature.