

## Haim

### 3369

Aimable Recessed  
Headboard Lamp

#### IMPORTANT

- **Always disconnect the power before installing, cleaning, or other maintenance.**

## Product Information and Warnings

- Please read all included assembly instructions and warnings carefully before installation. Contact Customer Service if you have any questions or concerns. Before installation, please confirm that the fixture is compatible with your supply voltage and dimming system, if present.
- LEDs are highly sensitive electronic devices, and must be treated with care. Do not open any factory sealed compartments, and avoid touching the LEDs with your hands or any object.
- Although all our fixtures are equipped with protective devices, LED electronic systems are vulnerable to power surges and supply variations. Do not install LED fixtures on the same circuit as any motors, appliances, or HVAC systems.
- Do not remove or bypass any LED Driver or Transformer that is provided with the fixture, and do not replace or substitute with another power supply.
- Fixtures must be wired in parallel on independent leads; do not "daisy chain" multiple fixtures together or wire them in series.
- All factory-made splices and connections must remain intact. LED circuits are carefully designed and built, and improper connections may damage the fixture.
- Any mounting hardware is provided for your convenience and should be used with discretion. Always use the appropriate hardware for the mounting surface.

# Assembly Instructions

## Instructions D'Installation

**SONNEMAN**  
A WAY OF LIGHT

### Headboard Mount:

1. Cut a  $5 \frac{1}{16}$ " x  $1 \frac{1}{16}$ " rectangular hole (A).

**Note: Headboard must have thickness of at least 0.75"**

2. Make sure the mounting tabs (D) are folded in and install bracket (B) into the rectangular hole.
3. Secure in place using set screws (C) and provided Allen key (small).

### Pinup Mount:

1. Cut a  $4 \frac{5}{8}$ " x  $1 \frac{1}{16}$ " rectangular hole (A).

**Note: Drywall must have thickness of at least 0.5"**

2. Make sure the mounting tabs (D) are folded in and install bracket (B) into the rectangular hole.
3. Use a screwdriver to drive the mounting tabs (D) to a tightened position. See Fig. 3

**Note: Tightening the screws clockwise will draw the mounting tabs closed. Do not overtighten.**

4. See Fig.1 and Fig.2 to confirm the bracket installation.
5. Install fixture (E) into the bracket (B), then slide up to align screw hole. Secure with flat head screw (F) and provided Allen key (large).
6. Insert power supply plug (G) into wall outlet.
7. Press power switch (H), located on backplate, to cycle between 3 brightness settings and off.

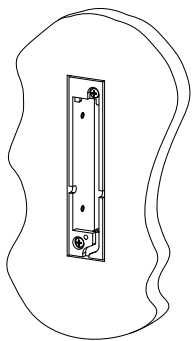
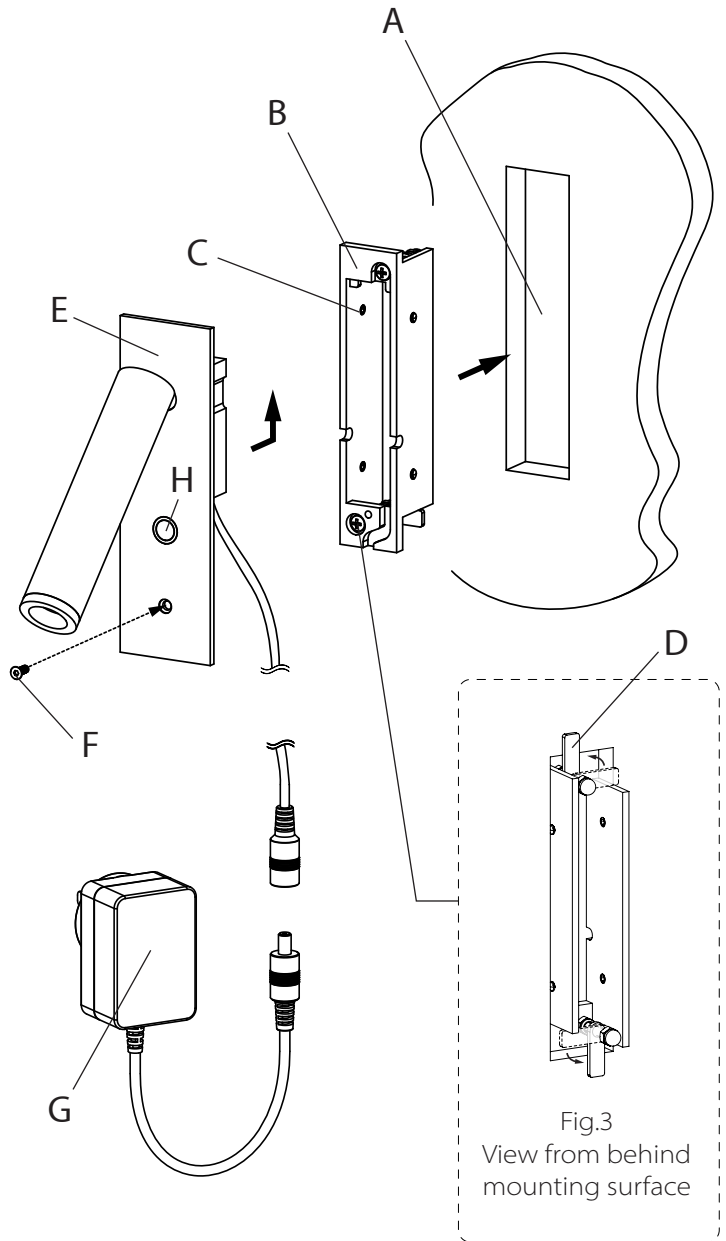


Fig.1  
Headboard Mount

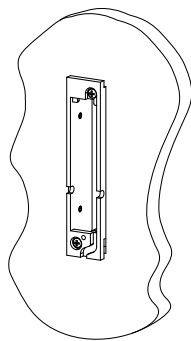
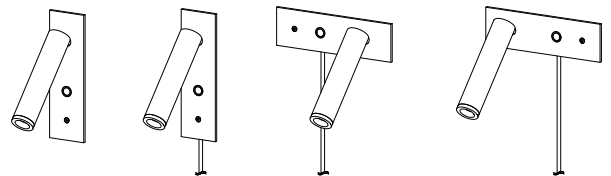
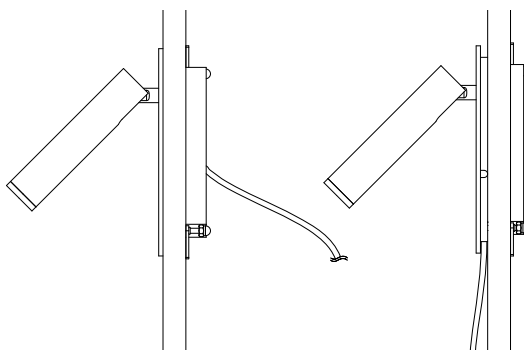


Fig.2  
Pin-up Mount



Fixture can be installed  
Vertically or Horizontally

### Care Instructions:

Use a clean, dry cloth when dusting.  
To protect the finish, avoid any harsh abrasives or chemicals.