



1718 W. Fullerton Chicago, IL 60614  
 Ph: 773.770.1195 • Fax: 773.935.5613  
 www.PureEdgeLighting.com • info@PureEdgeLighting.com  
 © 2016 PureEdge Lighting. All Rights Reserved.

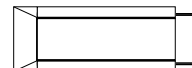
## Installation Instructions for TruLine Trim 1.6A End Feed Power Connector

TTL1.6A-EP\_

### IMPORTANT INFORMATION

- This instruction shows a typical installation.
- This fixture is wall or ceiling mount.
- This instruction must be used concurrently with other TruLine Trim 1.6A DIY installation instructions.
- This product must be installed by a qualified electrician and in accordance with local electrical codes.

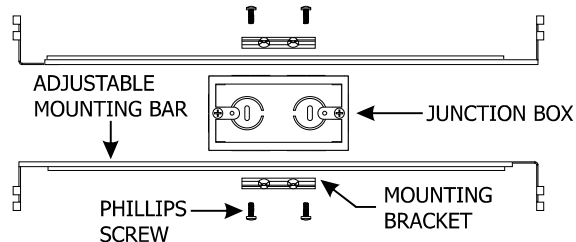
**SAVE THESE INSTRUCTIONS!**



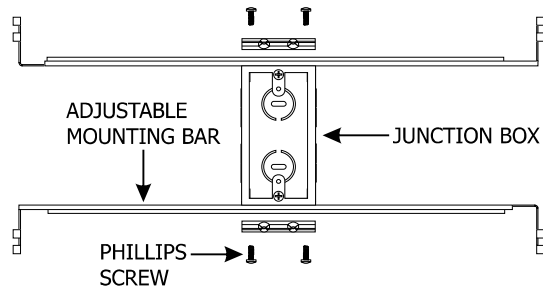
## Section One: Install the Junction Box

**A**

### HORIZONTAL ORIENTATION



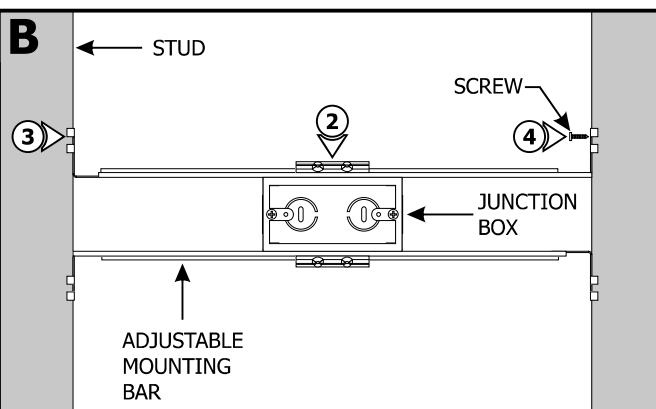
### VERTICAL ORIENTATION

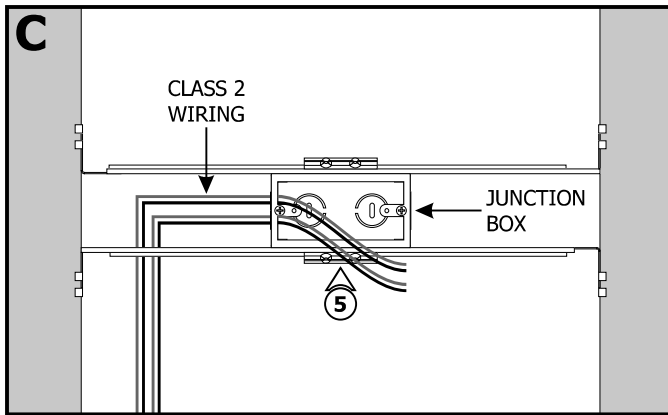


- 1:** Mount each adjustable mounting bar to one side of the junction box (mounts to any side of the housing depending on the orientation of the channel) and secure them with the mounting brackets and two Phillips screws provided.

**NOTE:** The adjustable mounting bars mount to studs that are spaced 15" to 24" apart. If the span needs to be shorter than 15", then break the bar arms from dedicated lines.

- 2:** Select the location between the two studs for the junction box to be mounted.
- 3:** Place the adjustable mounting bars between the studs.
- 4:** Make sure the lips on the adjustable mounting bars are against the studs. Secure the adjustable bars to the studs with screws.

**B**



**5:** Run the Class 2 low voltage wires coming from the remote power supply to the junction box. Only install conduit if required by local electrical codes.

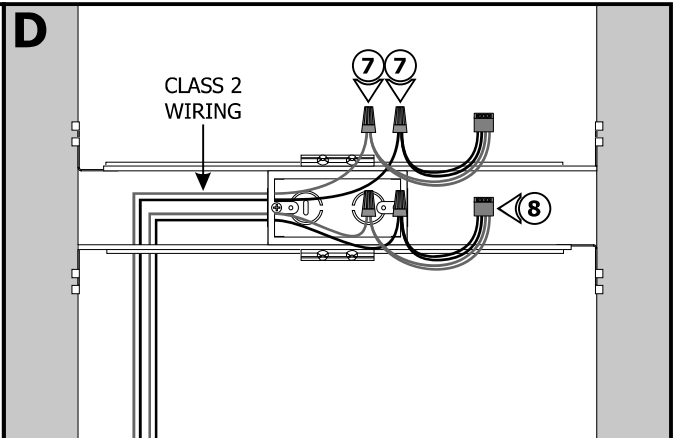
**6:** Refer to the instruction provided with the power supply along with the wiring diagram for proper wiring.

**7:** Connect the +24VDC power supply wire to the red wires of the power connector using a wire nut. Connect the -24VDC power supply wire to the black wires of the power connector using a wire nut.

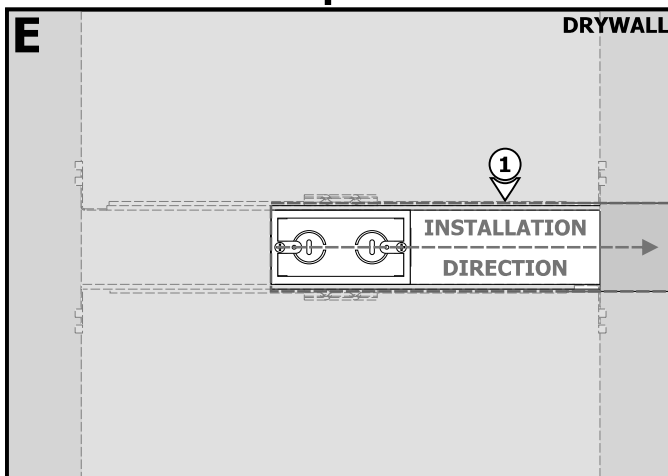
**8:** Repeat step 7 to connect the other power connector to the power supply.

**9:** Place all wire nut connections inside the junction box.

**CAUTION:** Unroll the entire LED strip from the reel and use the power connector to power the strip making sure there is no outage before continuing with the installation. Afterwards, carefully roll the LED strip loosely back into the reel.

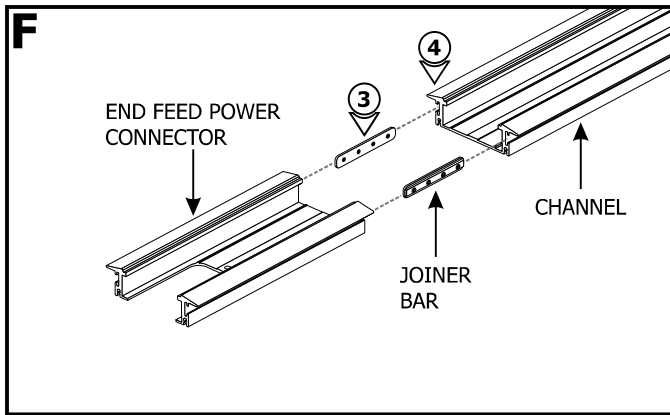


## Section Two: Prepare and Install the End Feed Power Connector



**1:** Mark and cut out the area where the installation will be located using the junction box opening as a guide (MIN. 2-1/4").

**2:** Refer to the TruLine Trim 1.6A instruction to measure and cut the channel and lens before continuing.

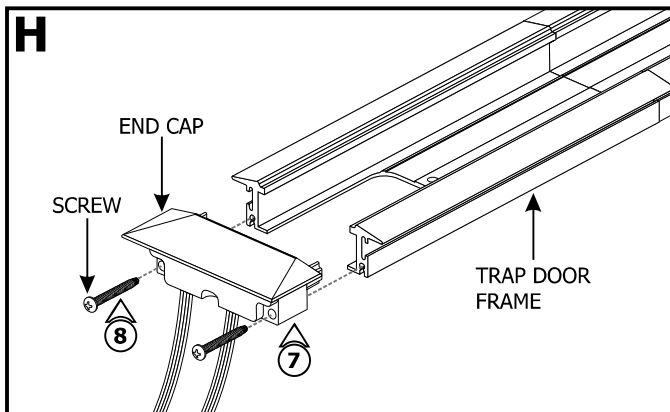
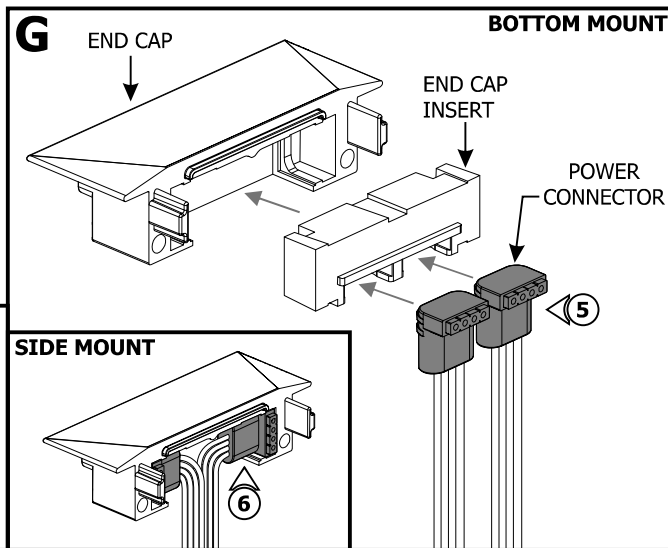


**3:** Insert the joiner bars halfway into the End Feed Power Connector. Tighten the two M3 set screws on each joiner bar using a 1.5mm Allen wrench.

**4:** Slide the other section of channel onto the joining bars and tighten the remaining M3 set screws.

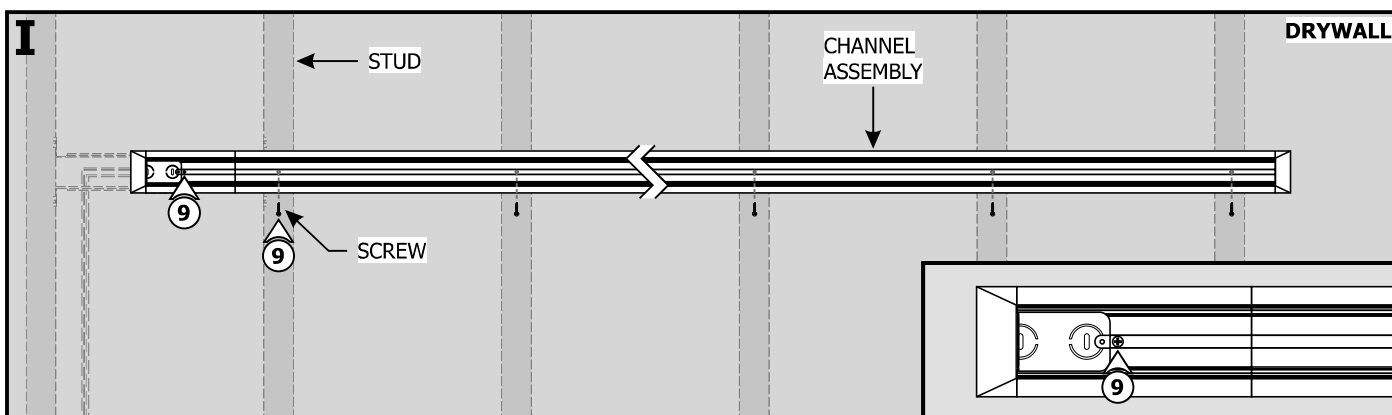
**5:** For installations where the LED strip will be laid on the **bottom** of the channel, place the power connectors into the end cap insert. Slide the end cap insert and power connectors into the end cap.

**6:** For installations where the LED strip will be laid on the **side** of the channel, rotate the connectors and place them inside the end cap.

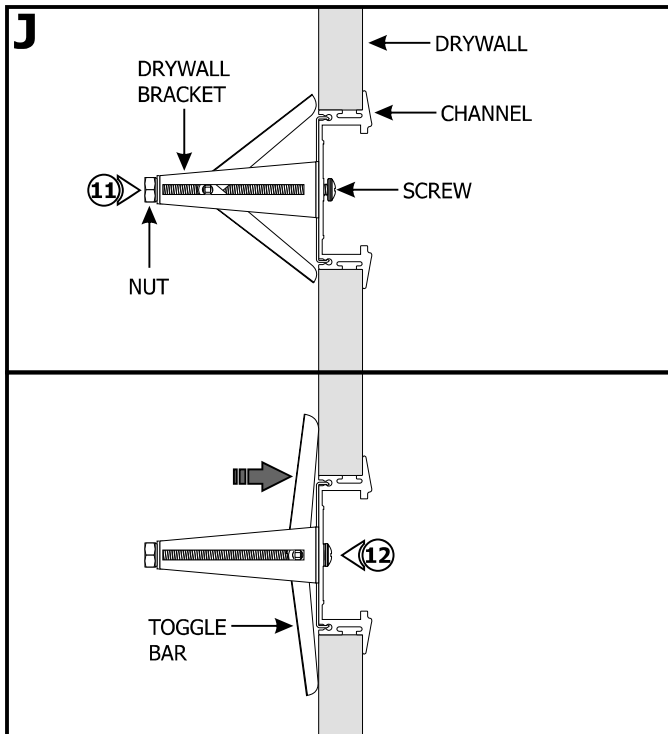


**7:** Insert the Phillips screws through the end cap holes and thread into the channel.

**8:** Tighten the end cap to the channel using a Phillips screw driver.



**9:** Place the channel assembly into the drywall cut out. If necessary, carefully make holes on the center of the channel. Using the marked locations on the drywall, secure the channel to the studs with the #6 drywall screws. Secure the channel assembly to the junction box using the provided screw.

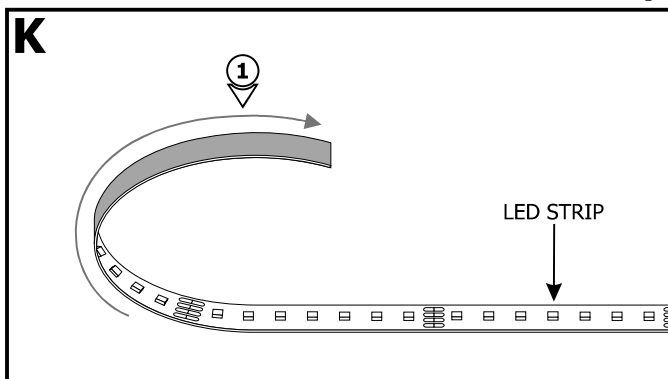


**10:** If the channel does not line up with a stud, use the provided Drywall Bracket to install to the drywall.

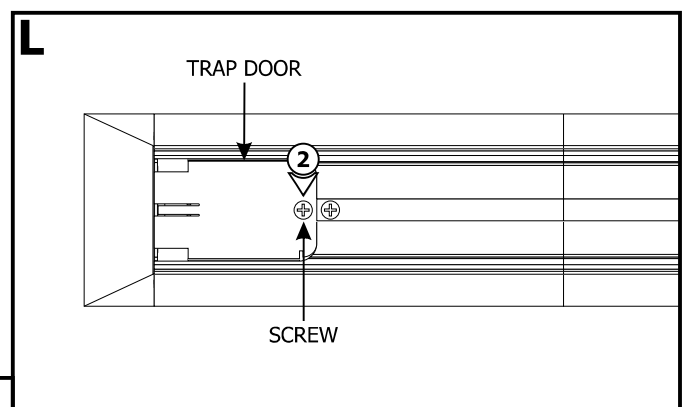
**11:** Snap the Drywall Bracket to the back of the channel. Feed the screw through the channel, toggle bar, and nut.

**12:** Place the channel assembly into the drywall cutout. Tighten the screw to secure in place. The screw will stop when the toggle bar is tight and secure behind the wall.

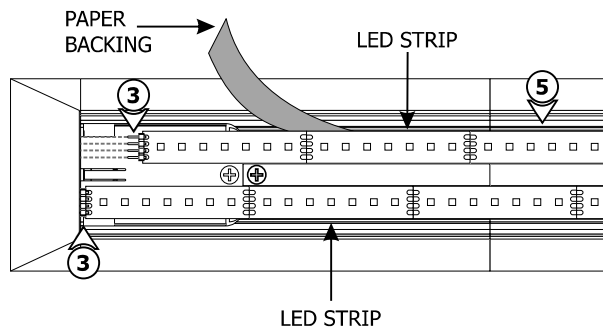
## Section Three: Install the LED Strip



**1:** Gently uncoil the LED Strip before applying to the channel otherwise the strip may lift off of the surface.



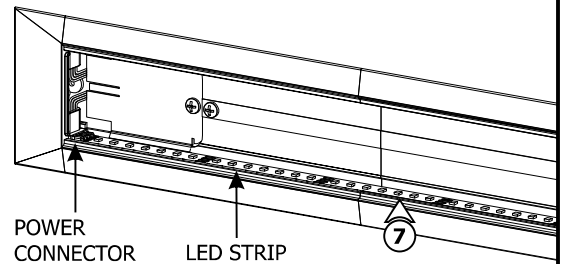
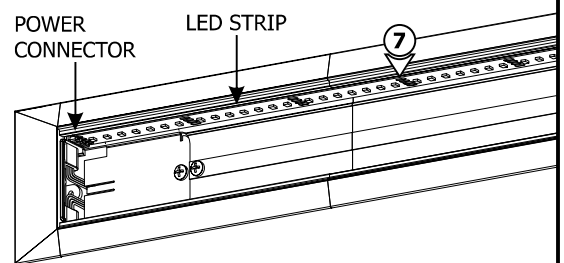
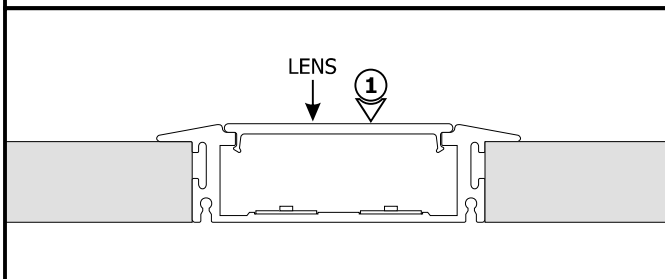
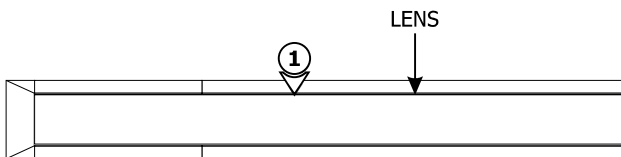
**2:** Attach the trap door and secure using the Phillips screw.

**M****LED Strip: Bottom Mount**

- 3:** Line up the +24VDC marking on each LED Strip with the +24V wires of the power connector. Push the pins of the LED Strips into the power connectors.
- 4:** Carefully remove the backing from the LED Strip, making sure not to remove the tape from the LED Strip.
- 5:** Firmly press down the adhesive portion of the LED Strip onto the channel surface while removing the rest of the backing, making sure there are no air bubbles that can cause surface irregularities. Ensure the entire length of the channel is covered with LED Strips to avoid unlit areas.

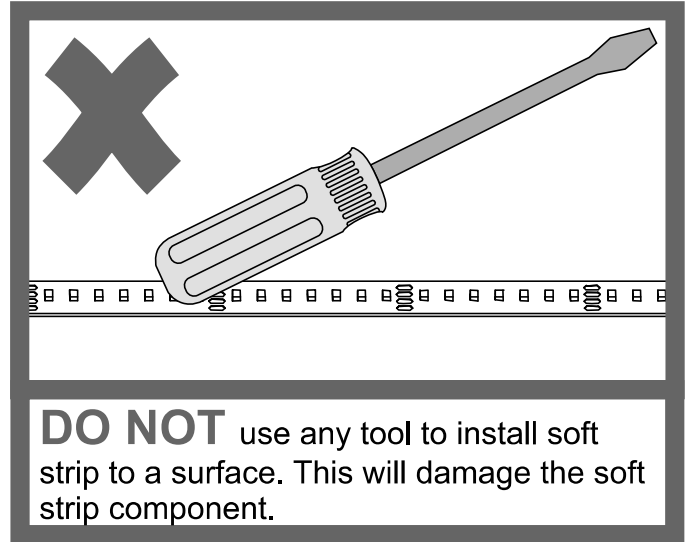
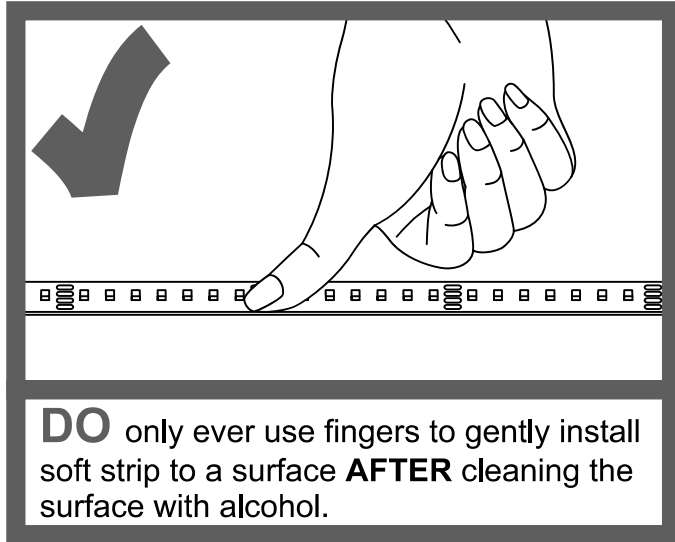
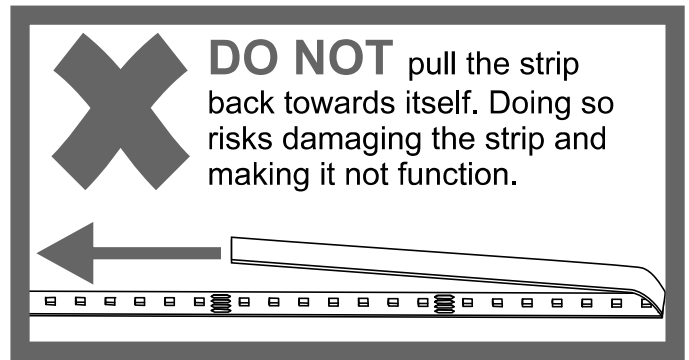
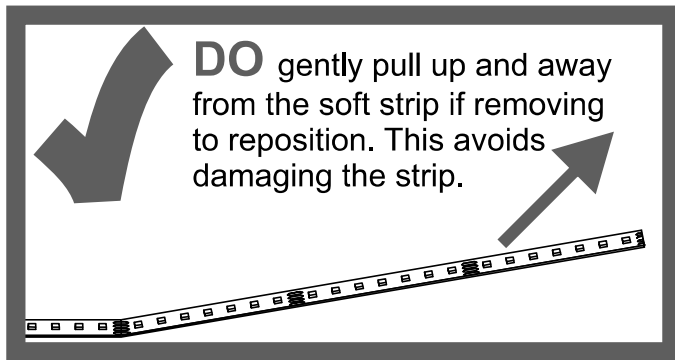
**LED Strip: Side Mount**

- 6:** Install the LED Strips to the sides of the channel.
- 7:** Repeat steps 3 through 5 to properly install the LED strips to the sides of the channel.

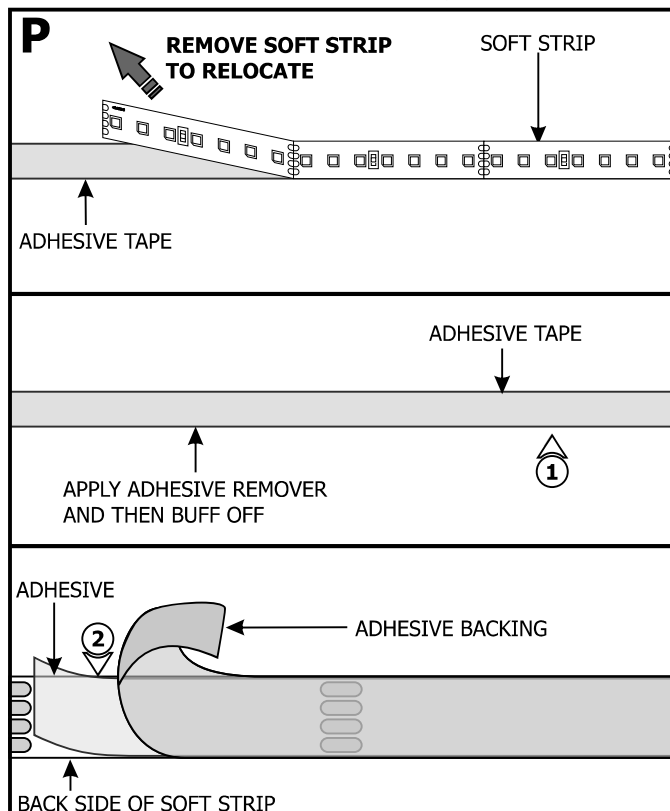
**N****Section Four: Install the Lens****O**

- 1:** To avoid seams and light leaks, use the whole lens to cover the End Feed Power Connector along with the rest of the installed channel.
- 2:** Snap the lens into the channel and make sure it is fully seated along the length of the channel opening. Discard the precut lens that was provided with the End Feed Power Connector.

## IMPORTANT INFORMATION REGARDING INSTALLATION AND REWORK OF SOFT STRIP LED



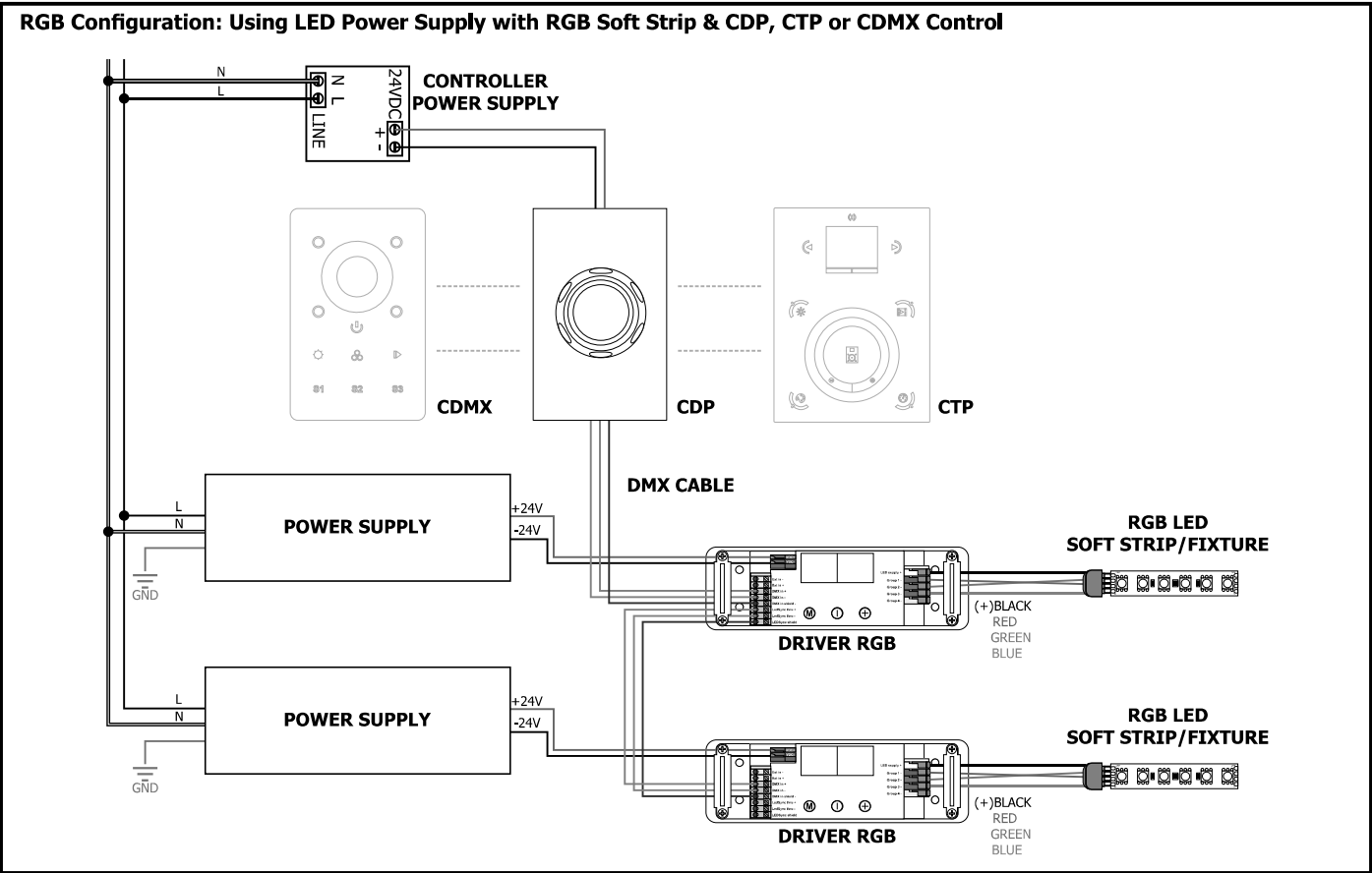
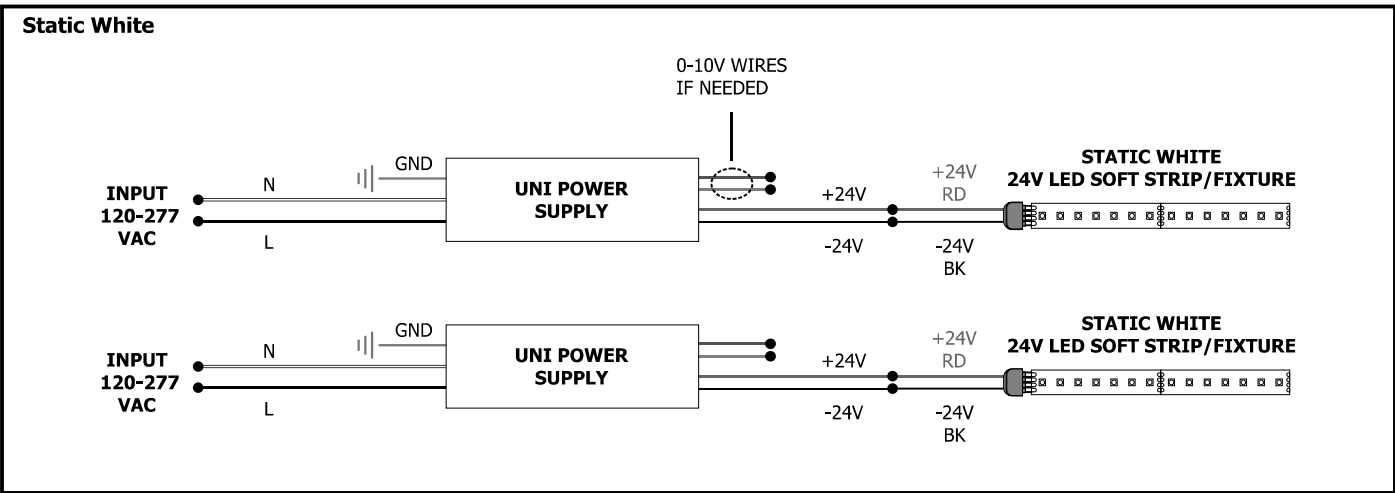
## Section Five: Relocating Soft Strip (Optional)



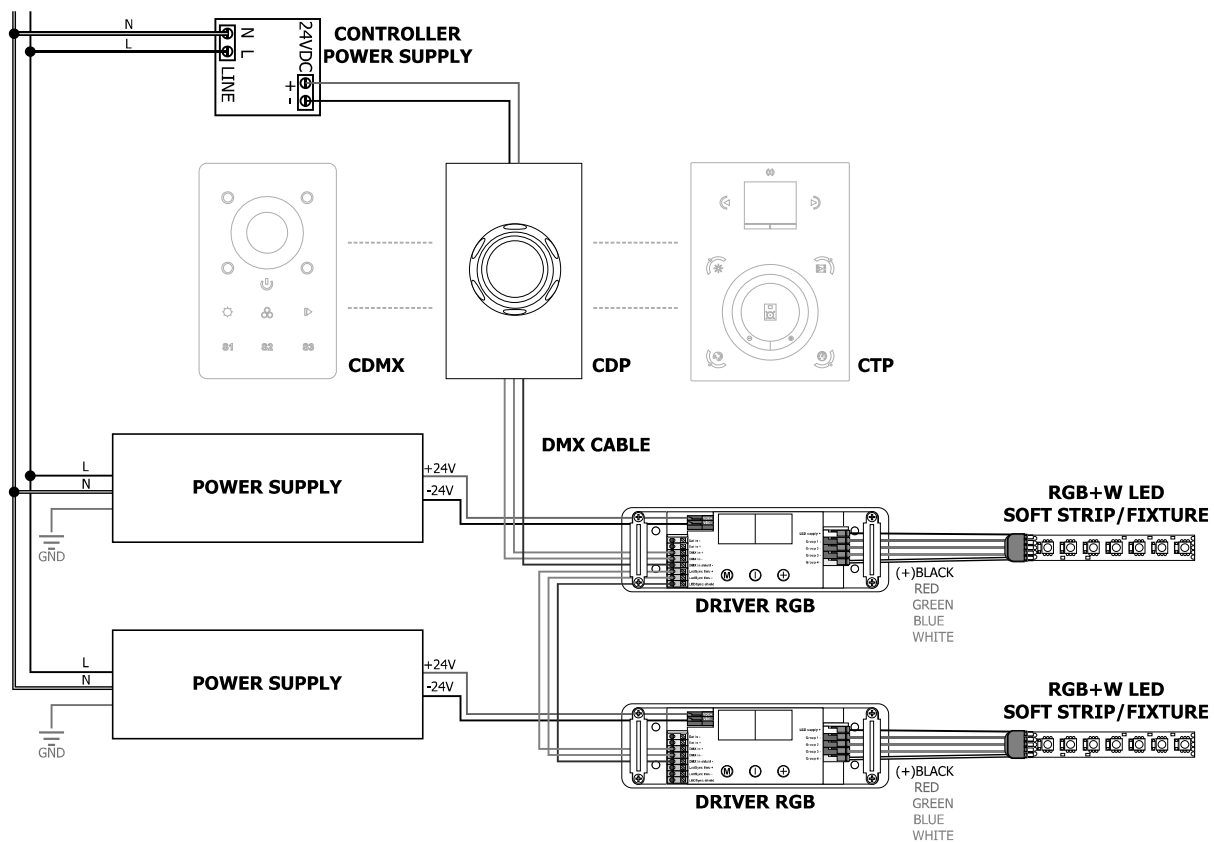
**NOTE:** If relocating the installed soft strip, make sure that the adhesive tape on back of the soft strip covers the entire strip. The adhesive tape isolates the strip from the installation surface. Damaged or inconsistent adhesive tape may cause the contacts on the back of the strip to come in contact with the conductive heat sink which will cause the strip to short and burn. Call Edge Lighting to get replacement adhesive tape and/or optional aluminum heat sink tape (SS-HR-F).

- 1:** To remove tape residue from back of the strip, apply WD-40, Goo Gone, or a mixture of warm water and lemon oil to the corner of a clean, dry towel. Gently buff the area containing the adhesive residue until it is completely removed.
- 2:** Gently remove a few inches from one side of the tape backing. Attach the adhesive tape to the back of the soft strip and apply moderate pressure to affix the tape. Continue this step a few inches at the time until the entire adhesive tape is attached to back of the soft strip.
- 3:** Refer to Section Three to reinstall the LED strip.

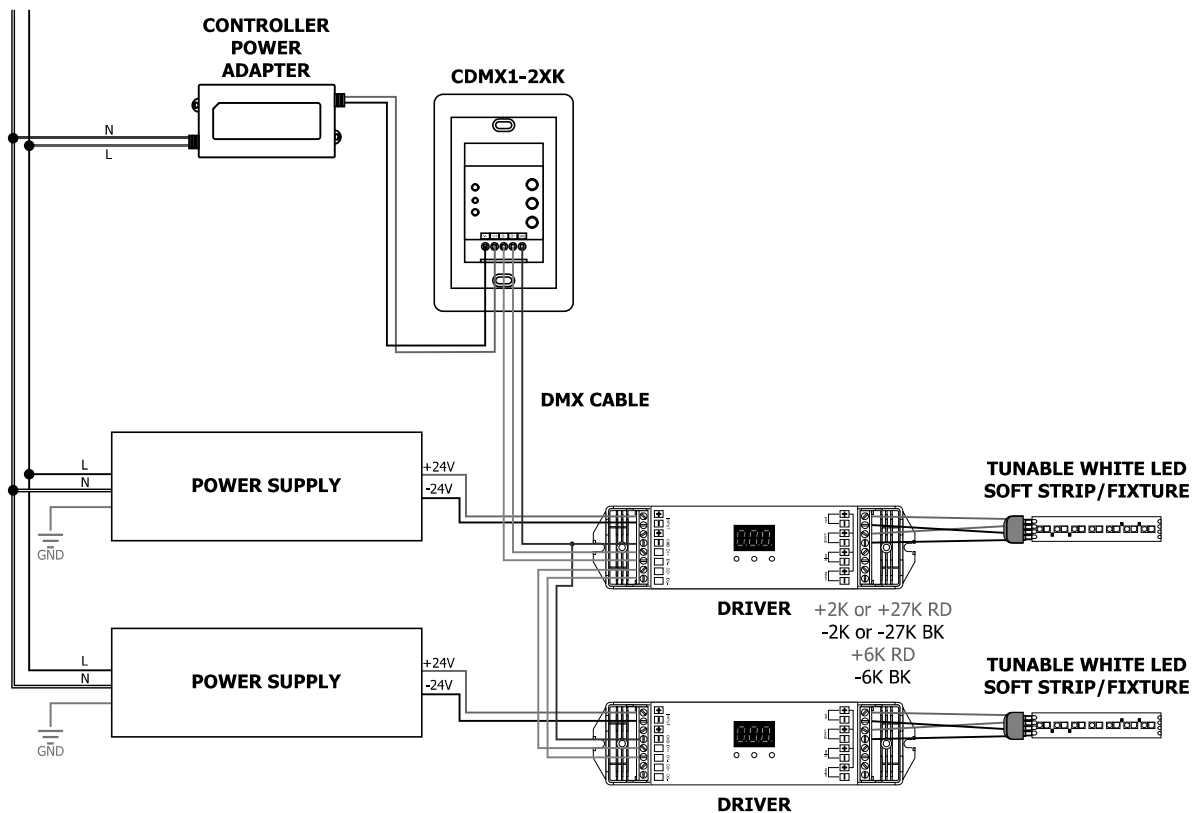
# General Wiring Diagrams



### RGB+W Configuration: Using LED Power Supply with RGB Soft Strip & CDP, CTP or CDMX Control



### Tunable White: 2XK Power Supply with CDMX Controller



### Tunable White: Two Channel Controls, for Intensity and Color Temperature

