



1718 W. Fullerton Chicago, IL 60614
 Ph: 773.770.1195 • Fax: 773.935.5613
 www.PureEdgeLighting.com • info@PureEdgeLighting.com
 © 2016 PureEdge Lighting. All Rights Reserved.

Installation Instructions for **Micro Track Ceiling 48V Single Circuit**

MTC48-1C-__

GENERAL INFORMATION

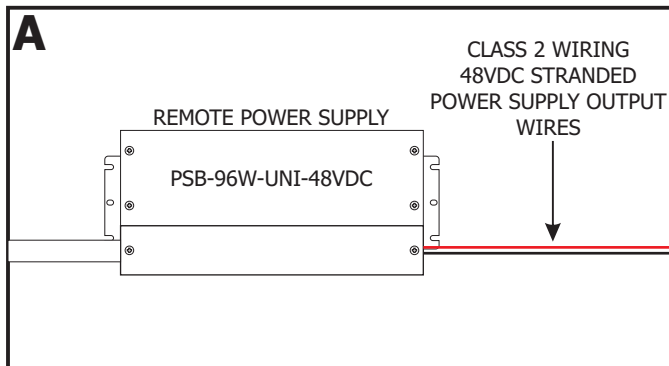
- Maximum linkable wattage per Loop: 48VDC systems, 96W
- Maximum track length per loop up to 40ft for 96W/100W systems.
- Power Supply and Dimming: 48V Power Supply & Class 2 Wiring (ELV, Triac, 0-10V)
- Tracks can be linked continuously without limitation up to 40ft before re-feeding. Sections can be individually controlled, allowing for flexible lighting layouts.
- Minimum loop voltage: Must maintain $\geq 45\text{VDC}$ at the end of each loop. Voltage below 45VDC may result in abnormal operation.
- Power buffer recommendation: Reserve - 20% buffer for linear modules & 25% buffer for other module types.
- Use only Pure Edge Lighting power supplies to avoid flickering, unstable dimming, noise or module failure and void warranty.
- When using multiple power supplies, use non-conductive connectors to separate each circuit.
- Voltage testing before installation: Measure output voltage from MT48-1C-EP with the power supply connected and confirm the reading is 48VDC. Then measure the voltage at the end of the circuit and to confirm no voltage drop.

IMPORTANT INFORMATION

- This product must be installed by a qualified electrician and in accordance with local electrical codes.
- Before beginning any electrical work, ensure that power is turned **OFF**.
- **DO NOT** install any luminaire assembly close to any curtain or similar combustible material.
- This instruction shows a typical installation.

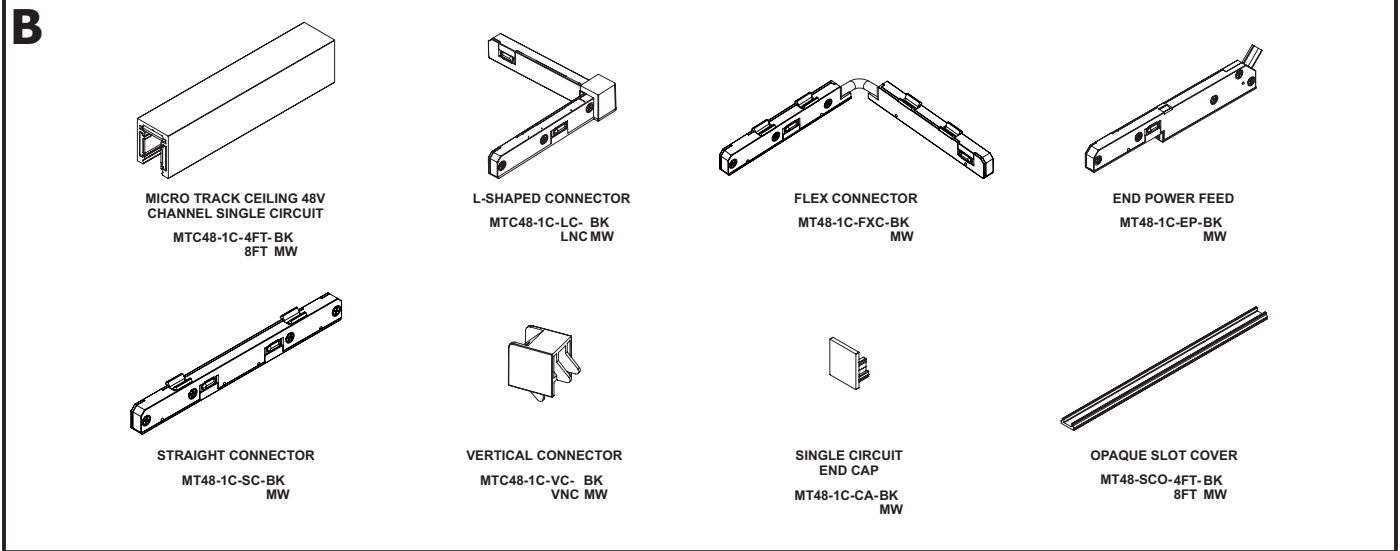
SAVE THESE INSTRUCTIONS!

Section One: Install the Remote Power Supply

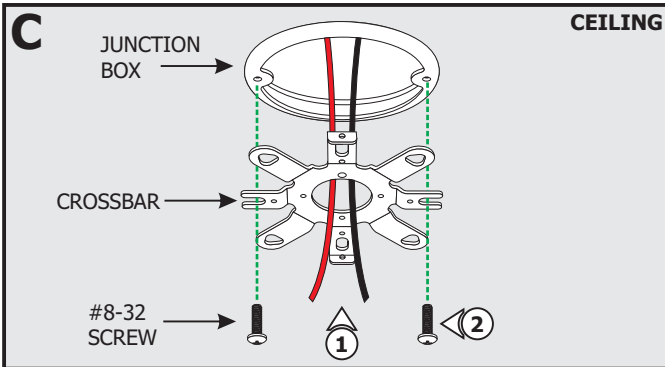


- 1:** Remote power supplies must be installed within 40ft of the junction box. Refer to the instructions and wiring diagram provided with the remote power supplies.

Section Two: Components



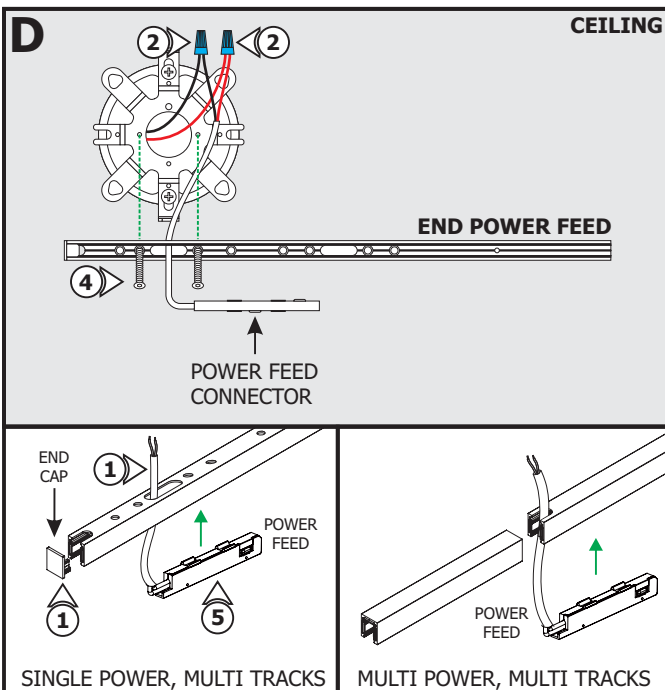
Section Three: 4" Square Split Canopy



NOTE: 4" Square Split Canopy version shown for demonstration purposes. If using the 1RE Junction Box, refer to the instructions provided with the Micro Track Ceiling Power Feed Connectors.

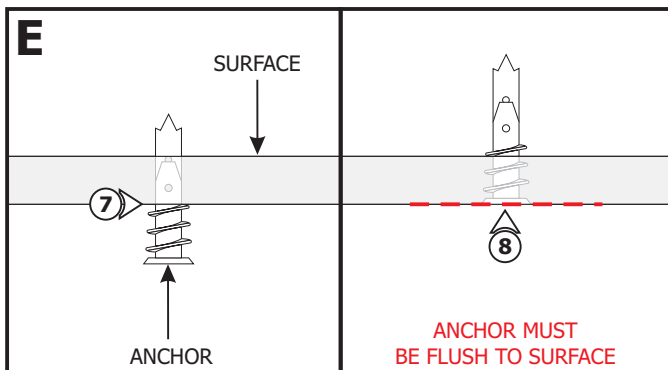
- 1: Feed the 48VDC low voltage wires coming from the power supply through the crossbar center hole.
- 2: Mount the crossbar to the junction box holes using two #8-32 screws.

Section Four: Install the Fixture and Connect Track Sections



NOTE: End Power Feed shown for demonstration purposes.

- 1: Push the end cap into the track. Feed the power feed connector cable through the opening on the track.
- 2: Connect the red wire from the power feed connector to the + wire of the power supply using a wire nut. Connect the black wire of the power feed connector to the - wire of the power supply using a wire nut.
- 3: Place all connections inside the junction box.
- 4: Secure the End Power Feed to the junction box.
- 5: Place the power feed connector inside the track.

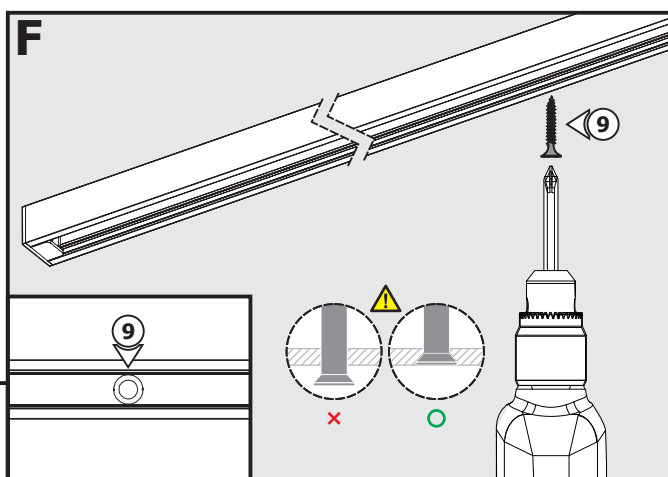


NOTE: Steps 7 and 8 are for drywall mounting. Omit these steps if mounting to a wood surface directly.

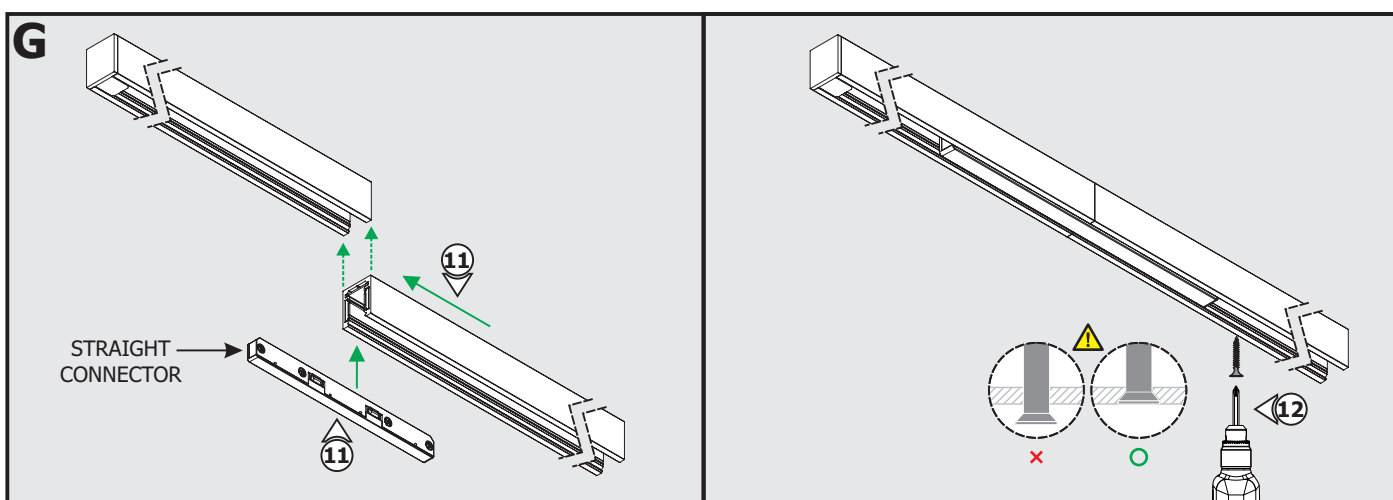
6: Mark the location of the track holes on the surface, ensure they are centered with the junction box.

7: Tap the anchors onto the marked points up to the threaded portion with a hammer.

8: Screw in the threaded portion of the anchors with a Phillips screwdriver.



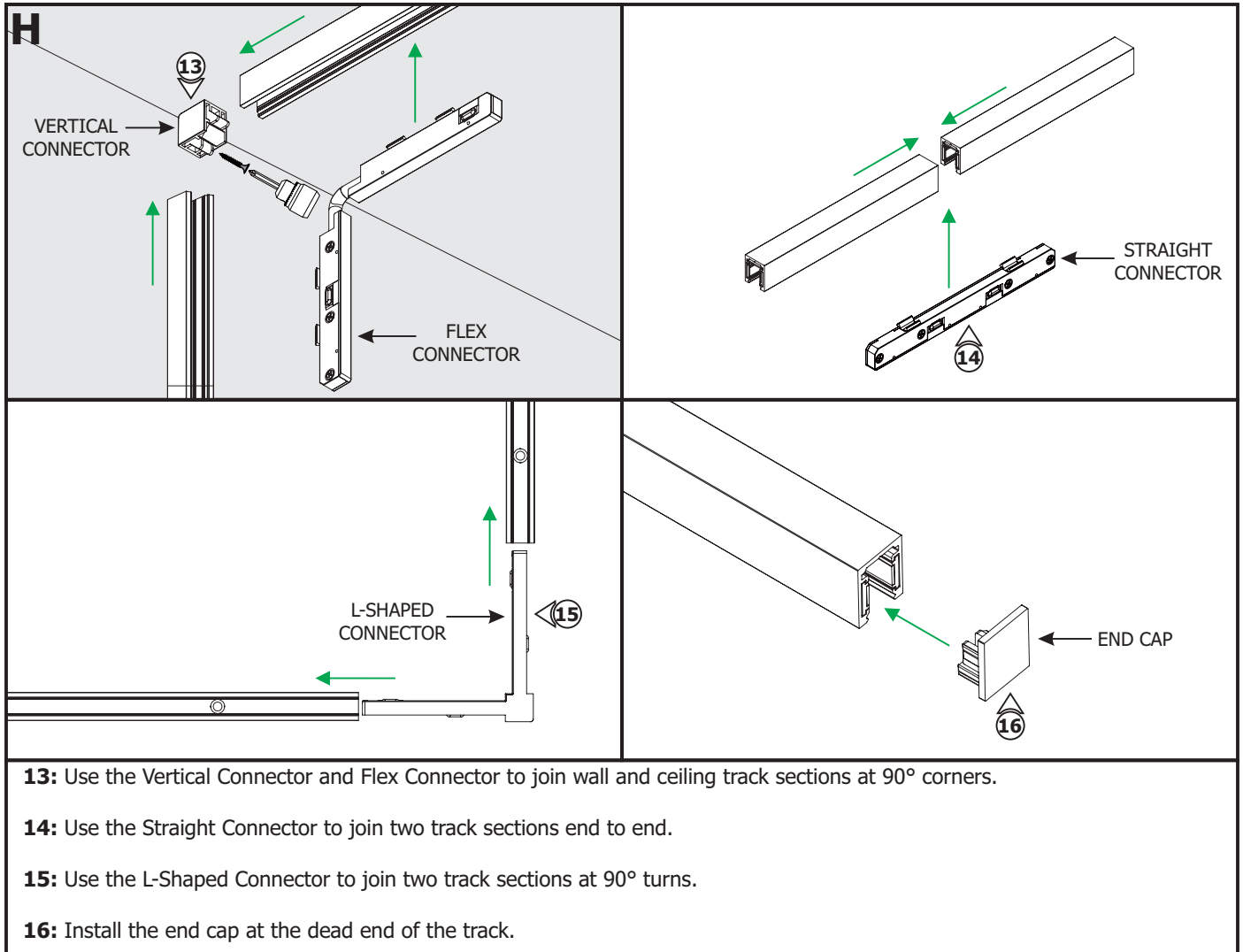
9: Secure the track to the surface using drywall screws (**DO NOT over tighten**). Ensure all screw heads are flush with the track surface.



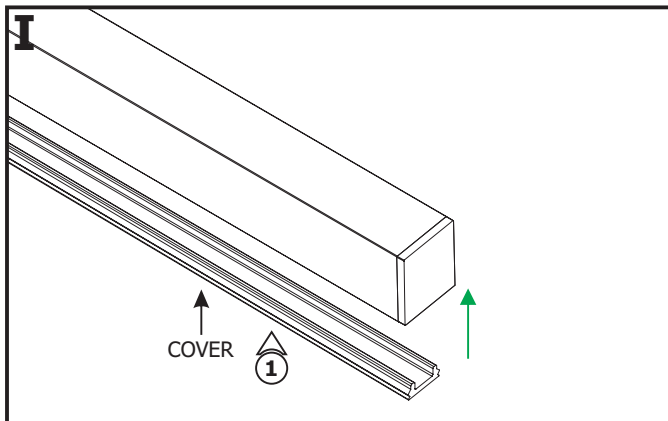
10: Mark the location of the holes on the surface for the next track, ensure they are centered with the previous track.

11: Join the track sections end to end and place the Straight Connector in the center of the tracks.

12: Secure the track to the surface using drywall screws (**DO NOT over tighten**). Ensure all screw heads are flush with the track surface.



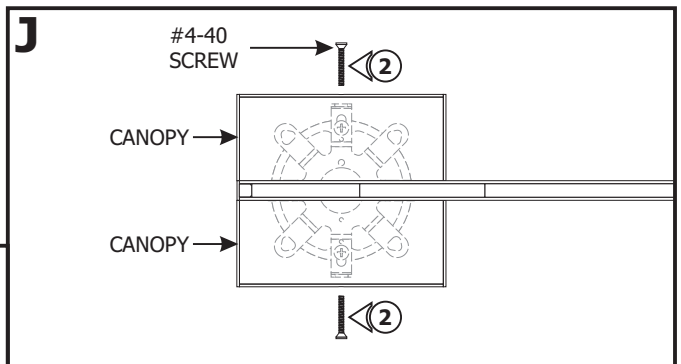
Section Five: Install the Covers and Canopy



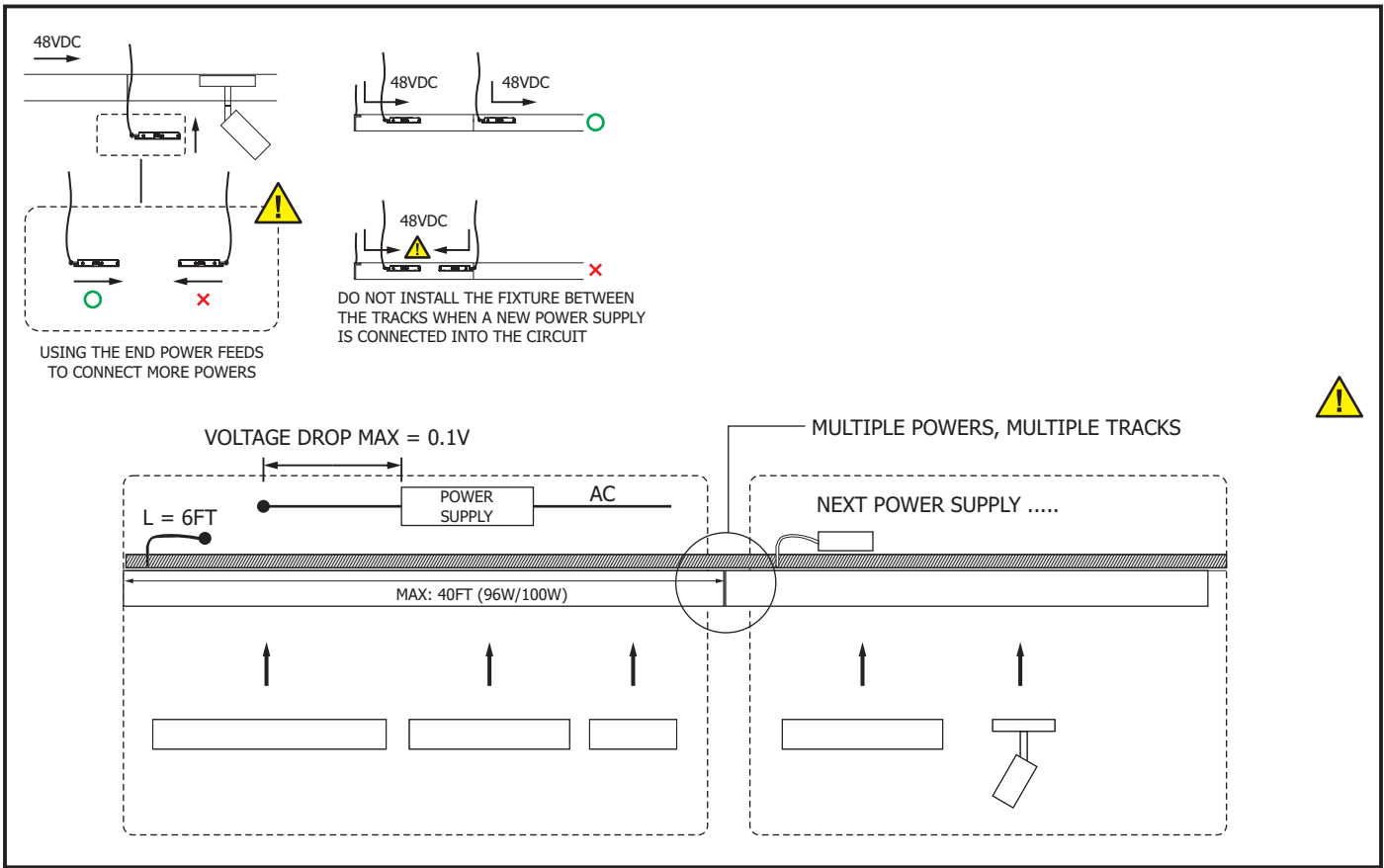
NOTE: Refer to the Assembly Guides provided with the Light Bars or Track Heads to install the fixtures.

1: For a nice and uniform look, if desired, measure the distance among the track heads and light bars or from the ends and cut the track over to those lengths. Snap the covers onto the unused portions of the tracks.

2: If applicable, place each canopy piece against the fixture and align the canopy holes with the crossbar holes. Secure the canopy pieces in place with the two #4-40 screws and 1/16" Allen wrench provided.



Section Six: Calculate Cable Length



General Wiring Diagram

