



1718 W. Fullerton Chicago, IL 60614
 Ph: 773.770.1195 • Fax: 773.935.5613
 www.PureEdgeLighting.com • info@PureEdgeLighting.com
 © 2016 PureEdge Lighting. All Rights Reserved.

Installation Instructions for **S5W5 LED Strip 5W RGB & 5W Tunable White, S5W7 LED Strip 5W RGB & 7W/FT Tunable White, S5W10 LED Strip 5W RGB & 10W Tunable White with 6FT Soldered Leads**

S5W_-SE_-_RGBTW

IMPORTANT INFORMATION

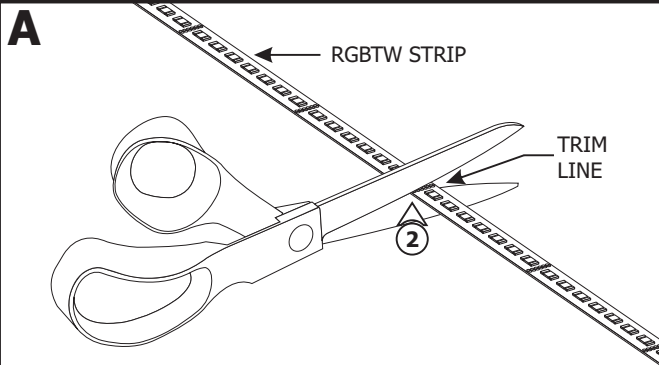
ETL LISTED


 Intertek
 3028534

- Conforms to UL STD 1598 & UL STD 2108 Certified to CAN/CSA STD C22.2 NO 250.0
- Suitable for Under-Cabinet Mount
- Dry Location Only
- Use Only With Class 2 Power Unit
- Peut être fixé Sous Une Armoire
- Pour Emplacements Secs Seulement
- Utiliser Seulement Avec Classe 2 Unité d'alimentation électrique


SAVE THESE INSTRUCTIONS!

Section One: Install the LED Strip

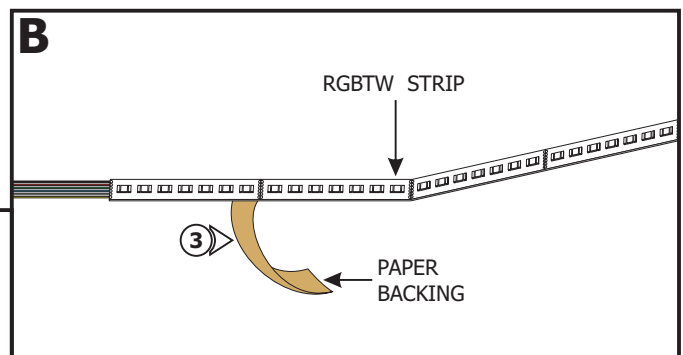


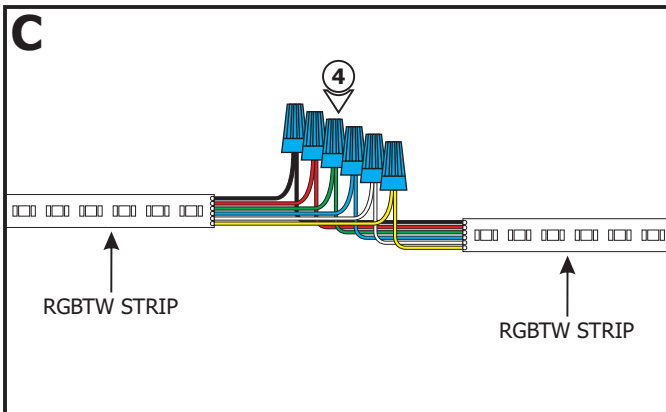
1: Determine the amount of LED strip needed.

2: If necessary trim the LED strip at the marked line above the contact (every 3" apart) with a sharp scissor to fit the design.

NOTE: Do not trim the strip at unmarked sections which may cause that section of the strip not to light up.

3: Carefully remove the backing from the LED Strip, make sure not to remove the tape. Firmly press down the adhesive portion of the LED Strip onto the mounting surface while removing the rest of the backing, making sure there are no air bubbles that can cause surface irregularities.





Soldered Leads, 2 ends (SE2)

4: To join multiple LED Strips, connect the black, red, green, blue, white and yellow wires from one end of an LED Strip to the black, red, green, blue, white and yellow wires from one end of the next LED Strip respectively using wire nuts.

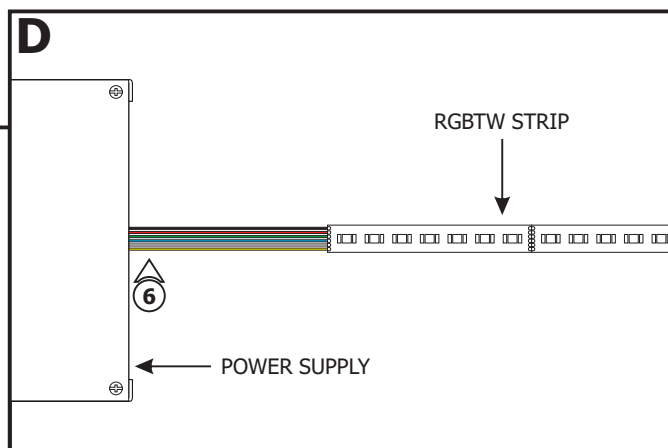
5: Repeat step 4 for additional sections.

6: Route the wires on the other end of the LED strip that are going to be connected to power to the power supply.

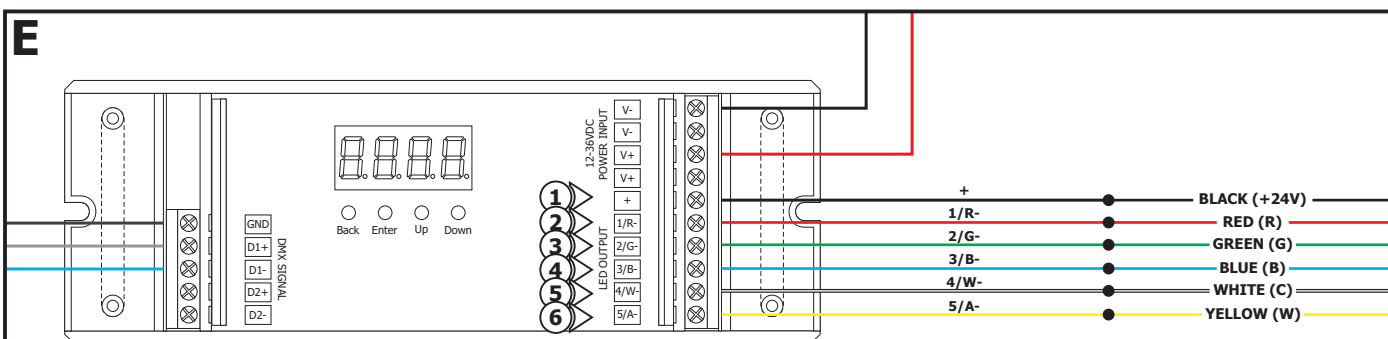
NOTE: S5W5: 5W RGB & 5W Tunable White (WiZ: 5 watts total, DMX: 10 watts total)

NOTE: S5W7: 5W RGB & 7W Tunable White (WiZ: 7 watts total, DMX: 12 watts total)

NOTE: S5W10: 5W RGB & 10W Tunable White (WiZ: 10 watts total, DMX: 15 watts total)



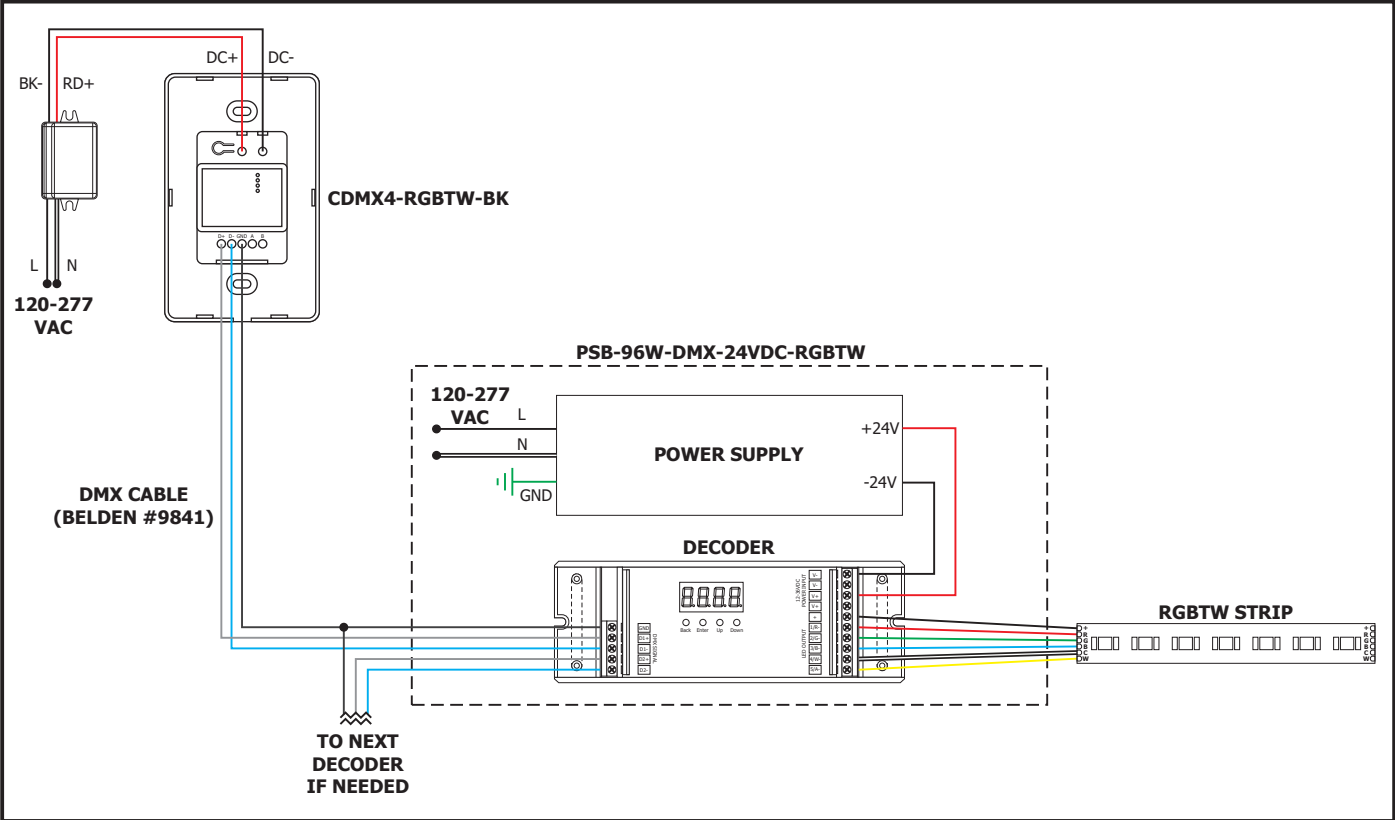
Section Two: Power the LED Strip with DMX Controls



NOTE: Refer to the instructions provided with the power supply for complete wiring installation.

- 1:** Connect the black "+" wire of the LED strip to the LED Output "+" decoder terminal and tighten the screw.
- 2:** Connect the red wire of the LED strip to the LED Output "1/R-" decoder terminal and tighten the screw.
- 3:** Connect the green wire of the LED strip to the LED Output "2/G-" decoder terminal and tighten the screw.
- 4:** Connect the blue wire of the LED strip to the LED Output "3/B-" decoder terminal and tighten the screw.
- 5:** Connect the white wire of the LED strip to the LED Output "4/W-" decoder terminal and tighten the screw.
- 6:** Connect the yellow wire of the LED strip to the LED Output "5/A-" decoder terminal and tighten the screw.

General Wiring Diagram for DMX Controls



Section Three: Power the LED Strip with Pure Smart Wi-Fi Enabled Power Supplies and Controls

F

The diagram shows the WiZ CV Bridge Box with six input terminals on the left and six corresponding output wires on the right. The inputs are labeled: 1 Vcc+, 6 WW-, 2 R-, 3 G-, 4 B-, and 5 CW-. The output wires are color-coded: BLACK (+24V), YELLOW (W), RED (R), GREEN (G), BLUE (B), and WHITE (C).

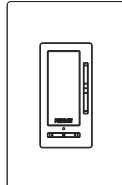
NOTE: Refer to the instructions provided with the power supply for complete wiring installation.

- 1: Connect the "+" black fixture wire to the "Vcc+" orange wire of the WiZ CV Bridgebox using a wire nut.
- 2: Connect the "R" red fixture wire to the "R-" red wire of the WiZ CV Bridgebox using a wire nut.
- 3: Connect the "G" green fixture wire to the "G-" green wire of the WiZ CV Bridgebox using a wire nut.
- 4: Connect the "B" blue fixture wire to the "B-" blue wire of the WiZ CV Bridgebox using a wire nut.
- 5: Connect the "C" white fixture wire to the "CW-" white wire of the WiZ CV Bridgebox using a wire nut.
- 6: Connect the "W" yellow fixture wire to the "WW-" yellow wire of the WiZ CV Bridgebox using a wire nut.

G



PURE SMART
ROOM CONTROLLER
CWW-TW-SCENE-WH



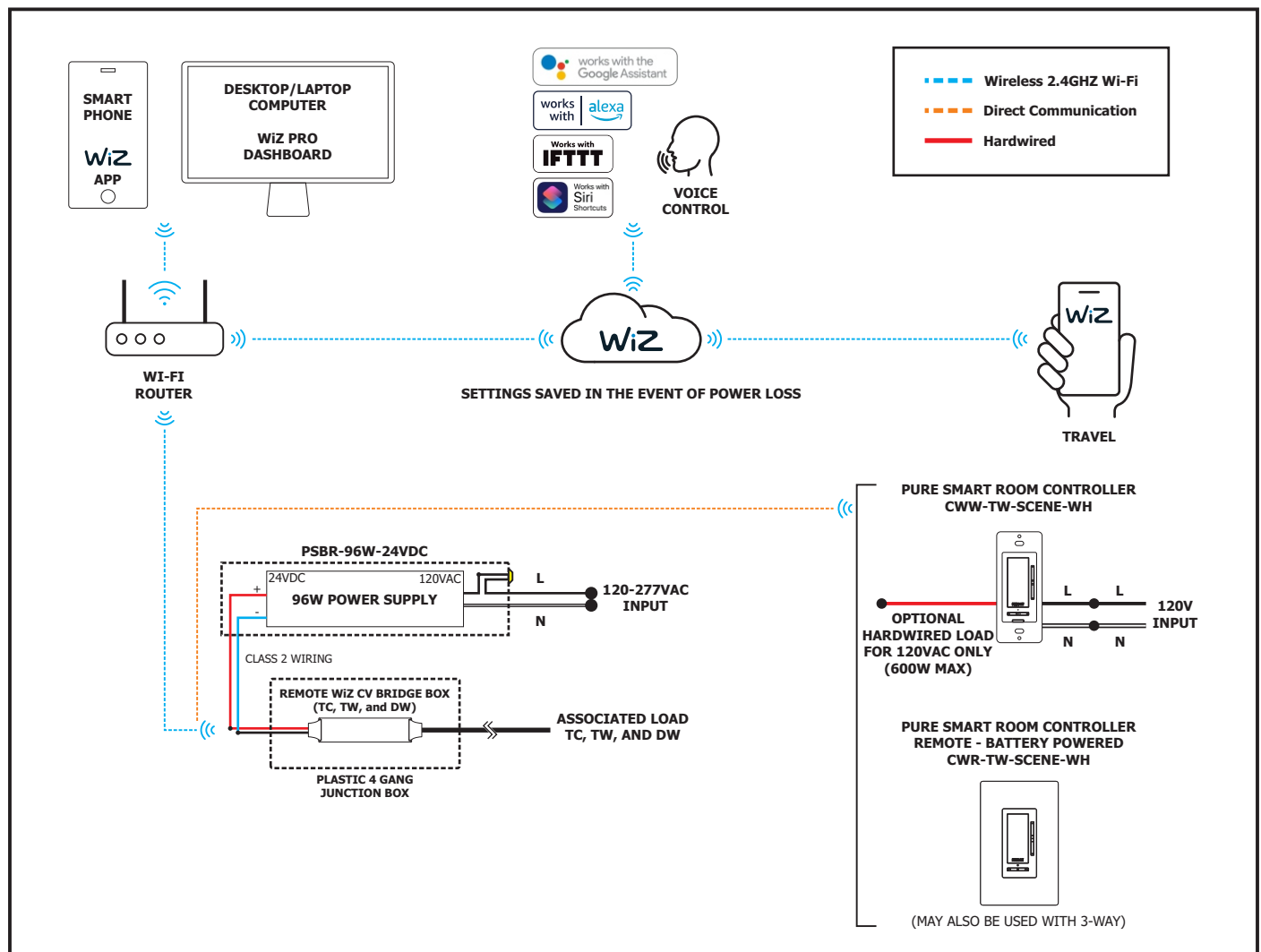
PURE SMART
REMOTE ROOM CONTROLLER
CWR-TW-SCENE-WH

NOTE: Download the "WiZ Connected" app from either Google Play or the Apple App Store.



7: Refer to the instructions provided with the optional controller and the WiZ App for complete set up.

General Wiring Diagram for Pure Smart Wi-Fi Enabled Power Supply and Controls



<https://faq.wizconnected.com/hc/en/7-wiz-v2/faq/527-adding-wiz-lights-in-your-home/>



1. Download the Free App
Search "WiZ Connected" in the App Store.



2. Install the LED Strip
Install the TruColor™ RGB + Tunable White LED Strip.



3. Pair the LED Strip with App
Follow the pairing directions in the app to complete the setup.

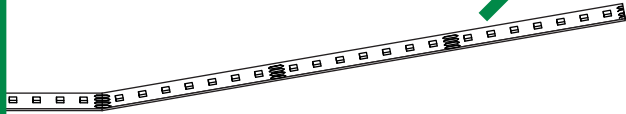


4. Enjoy the Possibilities
Endless color combinations with Red, Green, Blue, and Tunable White are now ready for all moods and occasions.

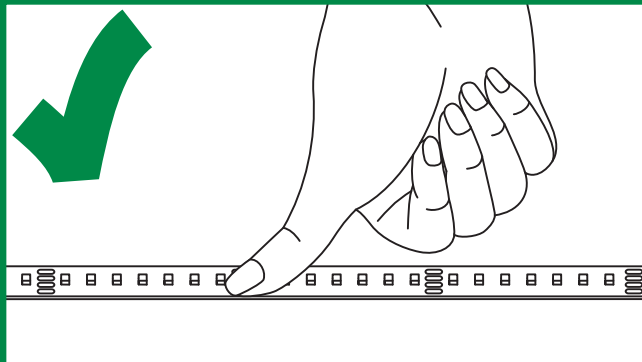
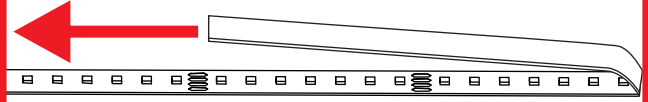
IMPORTANT INFORMATION REGARDING INSTALLATION AND REWORK OF SOFT STRIP LED



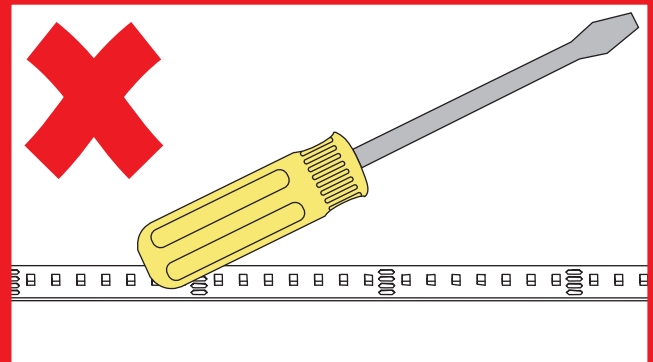
DO gently pull up and away from the soft strip if removing to reposition. This avoids damaging the strip.



DO NOT pull the strip back towards itself. Doing so risks damaging the strip and making it not function.

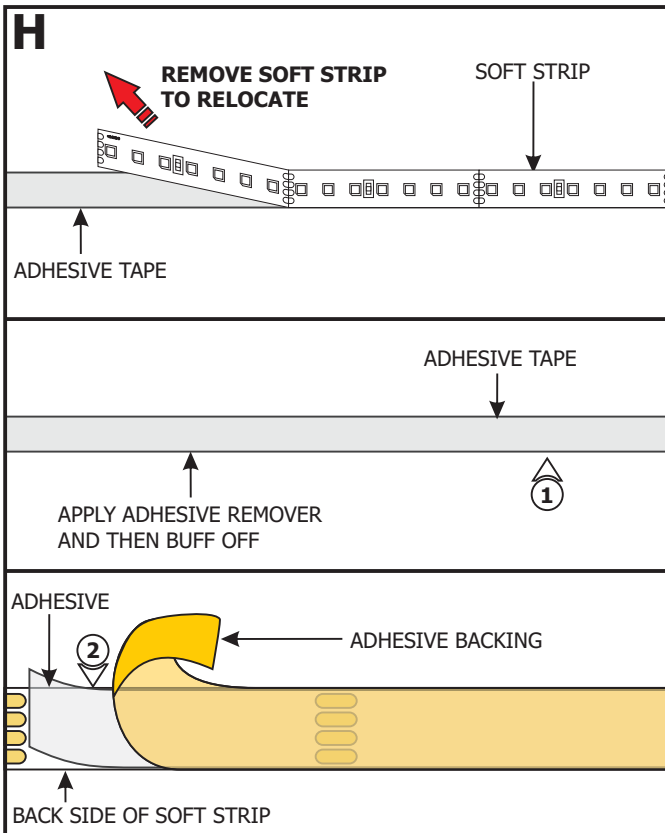


DO only ever use fingers to gently install soft strip to a surface **AFTER** cleaning the surface with alcohol.



DO NOT use any tool to install soft strip to a surface. This will damage the soft strip component.

Relocating Soft Strip (Optional)



NOTE: If relocating the installed soft strip, make sure that the adhesive tape on back of the soft strip covers the entire strip. The adhesive tape isolates the strip from the installation surface. Damaged or inconsistent adhesive tape may cause the contacts on the back of the strip to come in contact with the conductive heat sink which will cause the strip to short and burn. Call PureEdge Lighting to get replacement adhesive tape and/or optional aluminum heat sink tape (SS-HR-F).

- 1:** To remove tape residue from back of the strip, apply WD-40, Goo Gone, or a mixture of warm water and lemon oil to the corner of a clean, dry towel. Gently buff the area containing the adhesive residue until it is completely removed.
- 2:** Gently remove a few inches from one side of the tape backing. Attach the adhesive tape to the back of the soft strip and apply moderate pressure to affix the tape. Continue this step a few inches at a time until the entire adhesive tape is attached to the back of the soft strip.
- 3:** Refer to Section One to reinstall the LED strip.