



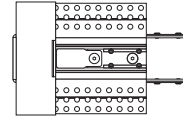
1718 W. Fullerton Chicago, IL 60614  
 Ph: 773.770.1195 • Fax: 773.935.5613  
 www.PureEdgeLighting.com • info@PureEdgeLighting.com  
 © 2016 PureEdge Lighting. All Rights Reserved.

## Installation Instructions for TruTrack Dual Source End Power Feed

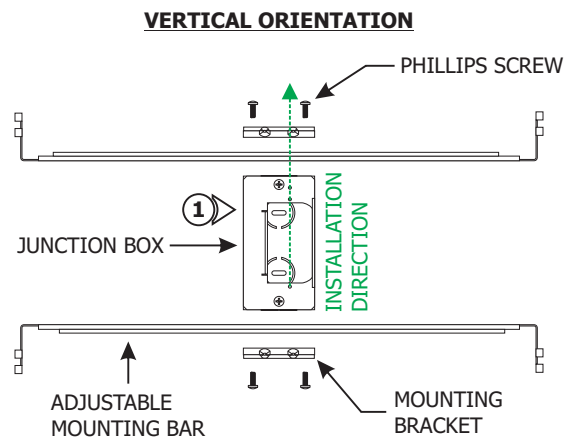
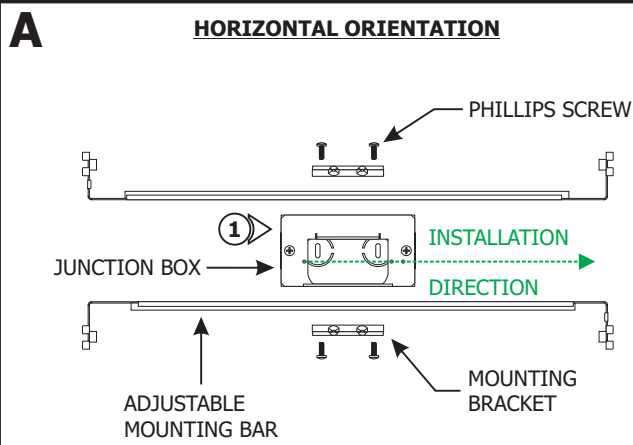
**TR24-DS-EP**

### IMPORTANT INFORMATION

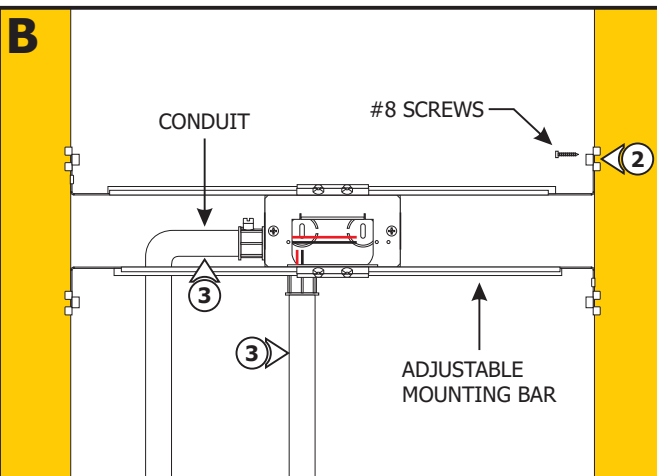
- This product is for indoor dry locations only.
- This instructions shows a typical installation.
- Before beginning any electrical work, ensure that the power to the electrical box is off.

**SAVE THESE INSTRUCTIONS!**


### Section One: Install the Junction Box



- 1:** Mount each adjustable mounting bar to one side of the junction box and secure them with the mounting brackets and Phillips screws provided.



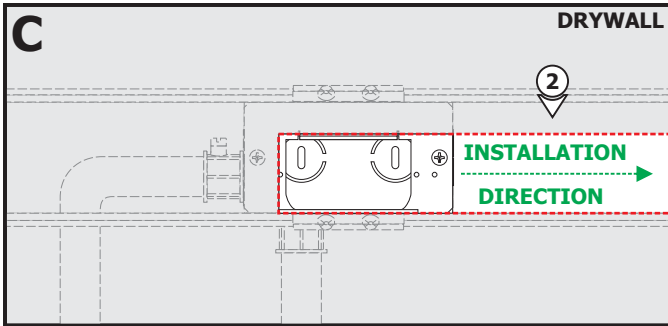
**NOTE:** Adjustable mounting bars mount to studs that are spaced 15" to 24" apart. If the span needs to be shorter than 15", then break the bar arms from dedicated lines.

- 2:** Place the adjustable mounting bar tabs against the ceiling joists. Secure the adjustable bars to the joists with the #8 screws.

- 3:** Run the Class 2 24VDC low voltage wires coming from the remote power supplies to the junction box. Only install conduit if required by local electrical codes.

**NOTE:** Only use 0-10V and UNI power supplies with this product. See the wiring diagram provided with the power supply instructions.

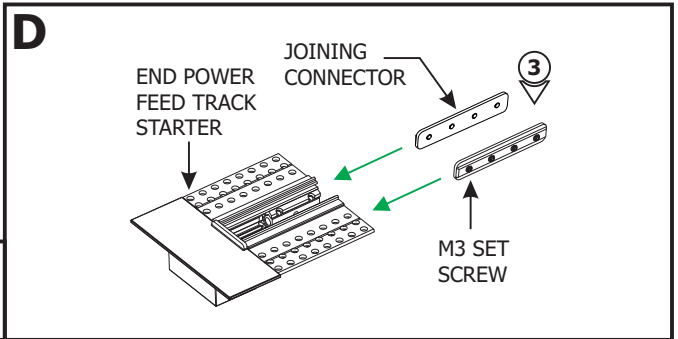
## Section Two: Install End Power Feed



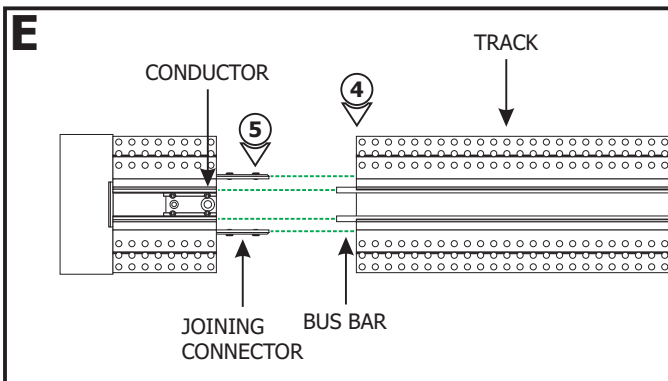
- 1: Cut a section of drywall to expose the junction box area.
- 2: Mark and cut out the area where the installation will be located using the junction box opening as a guide. Install the drywall aligning it with the junction box.

**NOTE:** Refer to the TruTrack Recessed Channel instructions to measure and cut the track and cover before continuing.

- 3: Insert the joining connectors half way into the End Power Feed Track Starter and tighten the set screws using the provided Allen wrench.

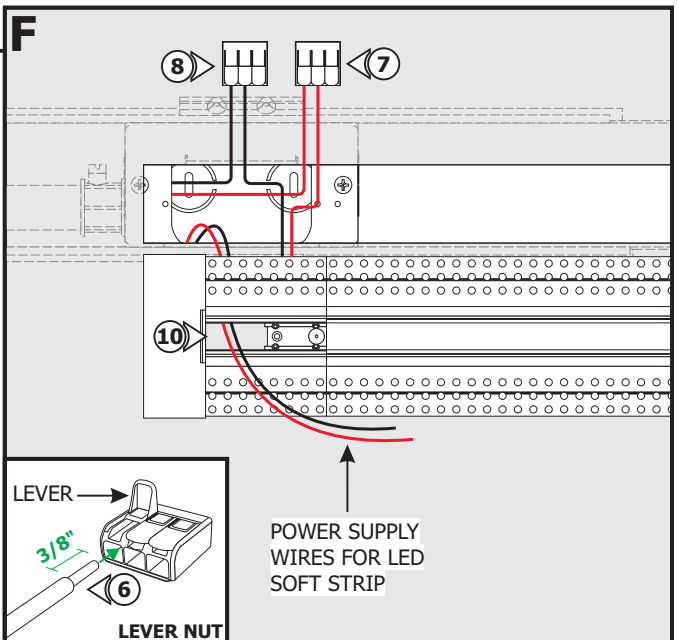


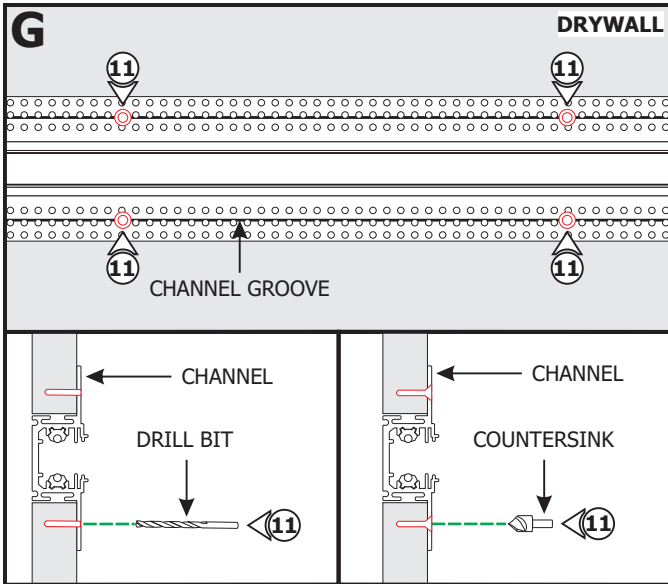
- 4: Slide the track over the joining connectors on the End Power Feed Track Starter and insert the bus bars into the seamless conductor.
- 5: Tighten the set screws on the joining connector and the set screws on the seamless conductors using the provided Allen wrenches.



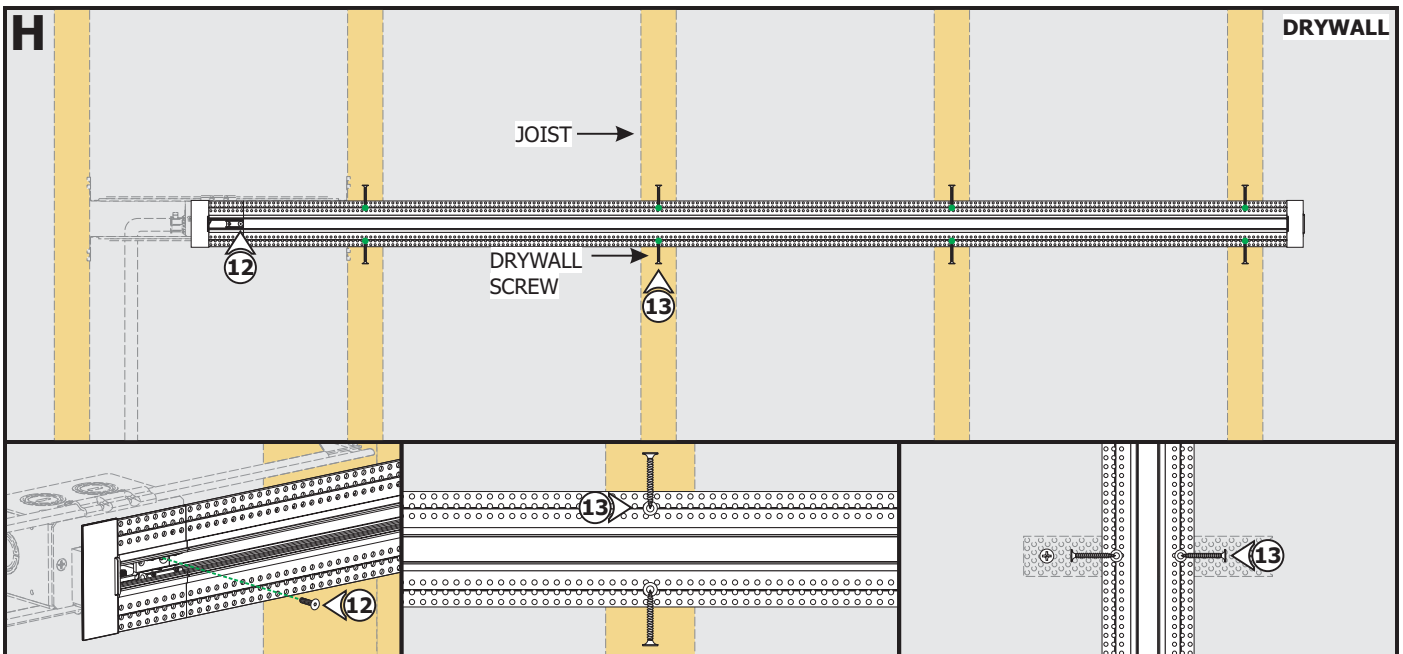
**NOTE:** Refer to wiring diagrams on page 6 to power the track.

- 6: Strip 3/8" off of the fixture wires and the low voltage power supply wires.
- 7: Pull up the levers of one lever nut, and insert the red +24VDC power supply wire and the red fixture wire into the lever nut. Push the levers down to connect and lock into place.
- 8: Pull up the levers of the other lever nut and insert the black -24VDC wire from the same power supply and the black fixture wire. Push the levers down to connect and lock into place.
- 9: Lightly tug on the wires to ensure they are secured in place. Place the lever nuts inside the junction box.
- 10: Feed the power supply wires for the LED Soft Strip through the End Feed Track Starter opening.



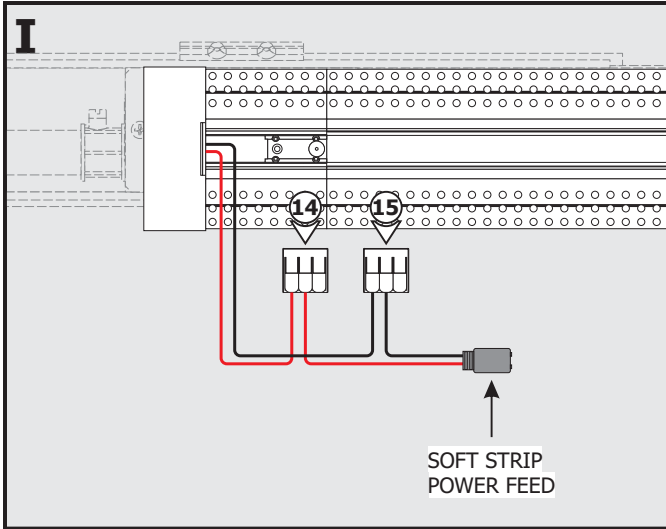


**11:** Place the assembled channel in the drywall cutout. Using the marked joist and mounting strap locations on the drywall, drill and countersink the channel along the groove lines using the provided square drill with countersink bit.



**12:** Secure the End Power Feed to the junction box using the provided screw.

**13:** Properly secure the channel to the marked joists and mounting straps using drywall screws (**DO NOT over tighten**). Ensure all screw heads are flush with the channel surface.



**NOTE:** Refer to wiring diagram on page 5 to power the LED Soft Strip.

**14:** Connect the red wire of the Soft Strip Power Feed to the red +24VDC wire of the second power supply using a lever nut.

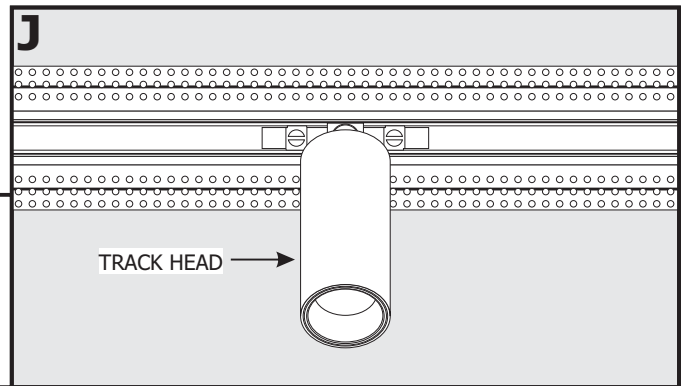
**15:** Connect the black wire of the Soft Strip Power Feed to the black -24VDC wire of the same power supply using a lever nut.

**16:** Place the lever nuts inside the junction box.

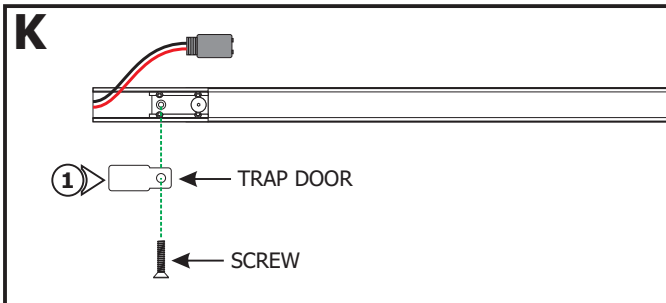
**CAUTION:** Unroll the entire LED strip from the reel and use the power connector to power the strip making sure there is no outage before continuing with the installation. Afterwards, carefully roll the LED strip loosely back into the reel.

**CAUTION:** Test the circuit using a track head before plastering.

**NOTE:** Refer to the TruTrack Recessed Channel instructions to plaster and complete the installation.

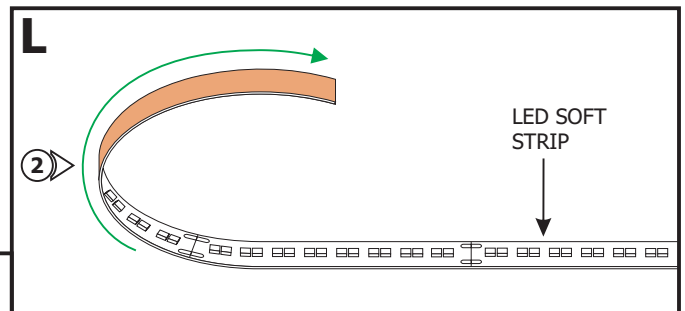


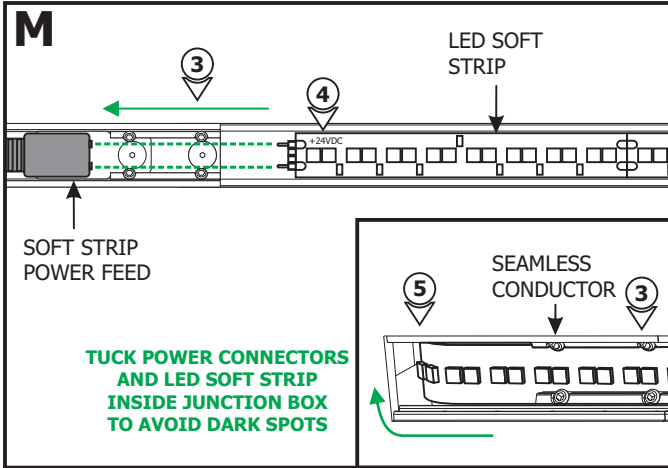
### Section Three: Install the LED Soft Strip



**1:** Attach the trap door to the junction box using the provided screw.

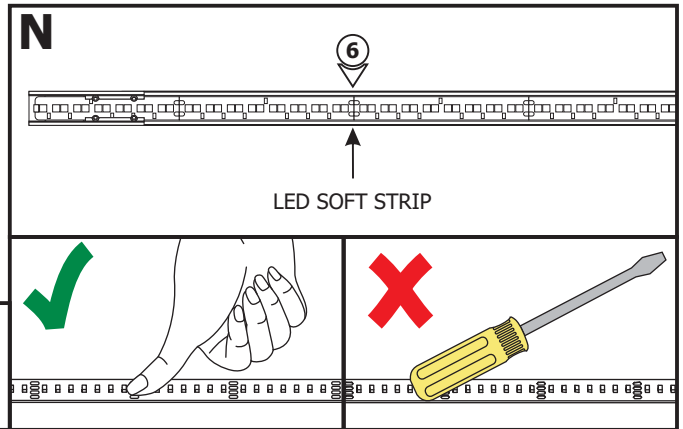
**2:** Gently uncoil the LED Soft Strip before applying to the channel otherwise the strip may lift off of the surface.





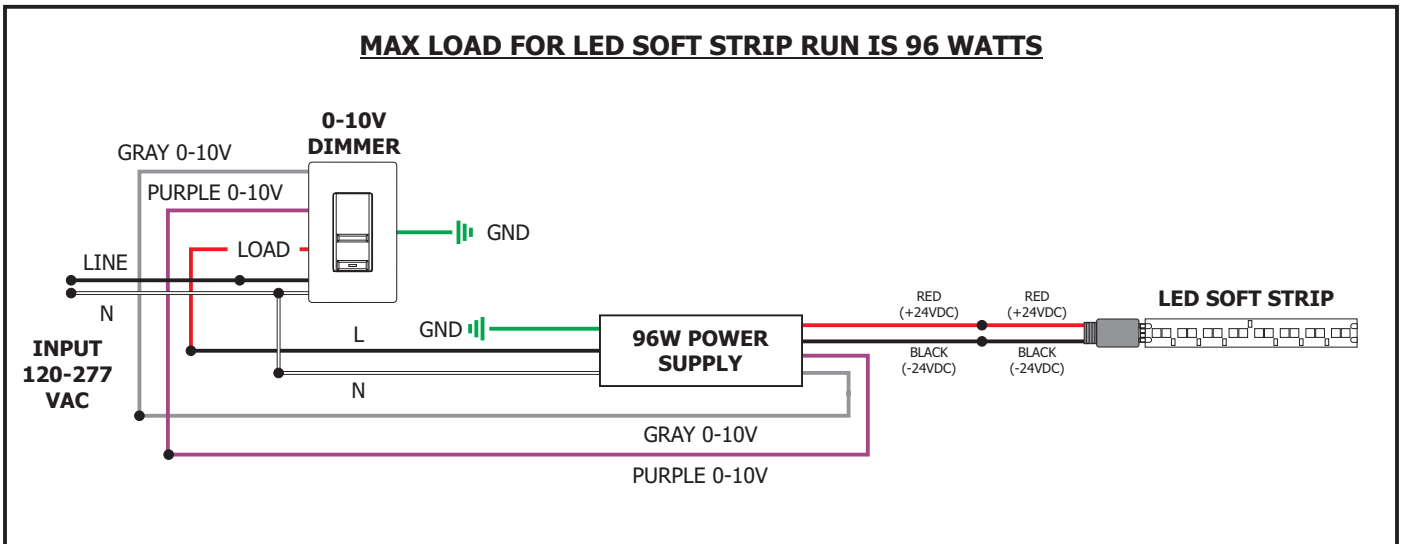
**NOTE:** LED Strip may not properly adhere to channel surface unless the channel is cleaned with alcohol prior to application.

- 3:** Carefully remove the backing from the LED Soft Strip, making sure not to remove the tape. Place or slide the LED Soft Strip through the seamless conductor.
- 4:** Align the red wire side of the Soft Strip Power Feed with the +24VDC marking on the LED Soft Strip and push the LED Soft Strip pins into the Soft Strip Power Feed.
- 5:** Place the Soft Strip Power Feed inside the junction box to avoid dark spots.

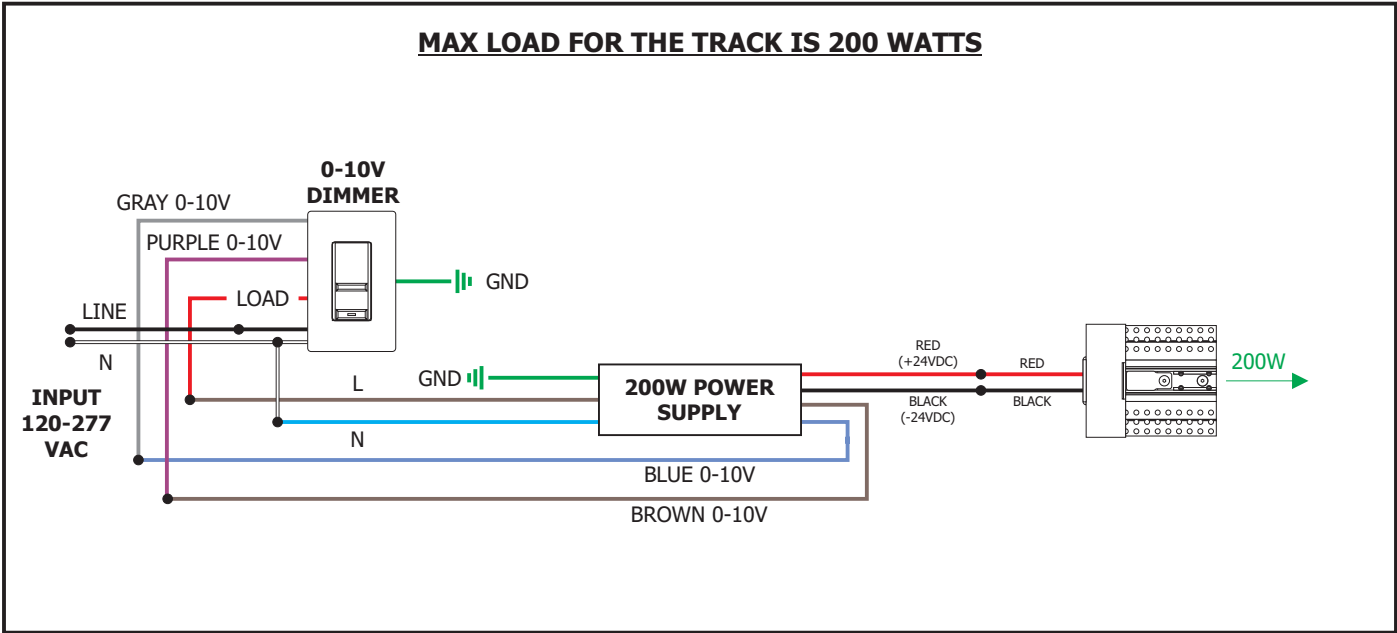
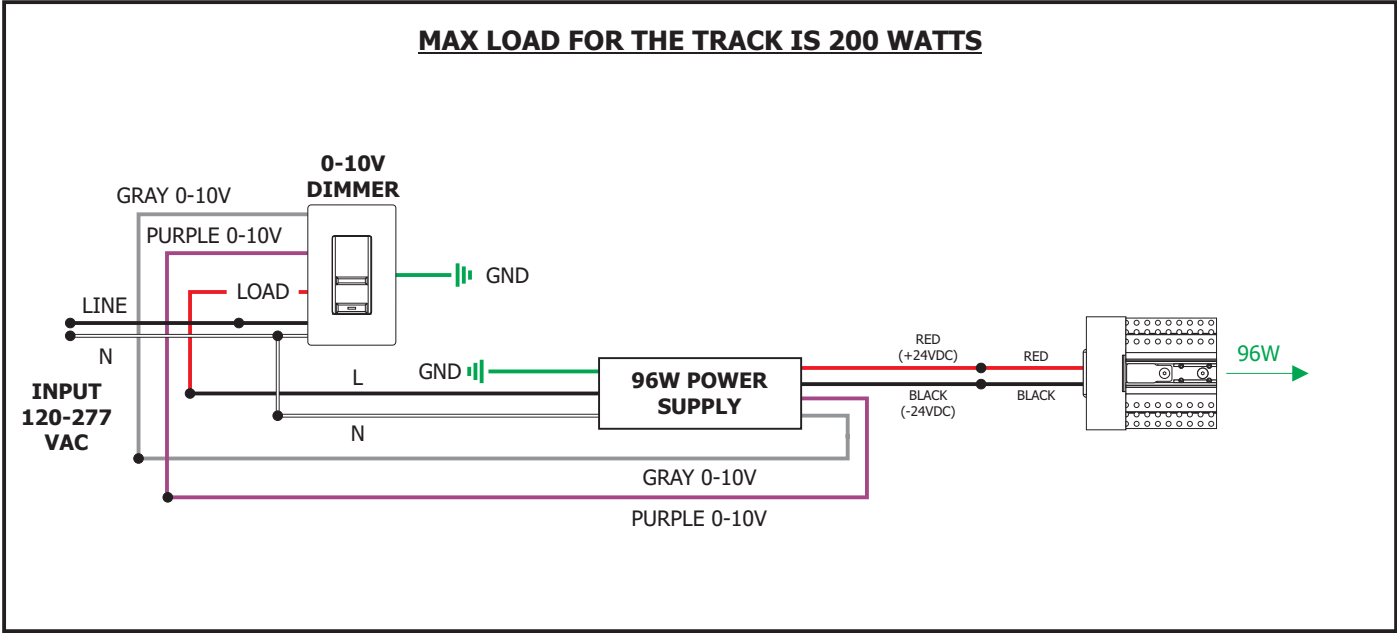


- 6:** Firmly press down the adhesive portion of the LED Soft Strip onto the track surface while removing the rest of the backing, making sure there are no air bubbles that can cause surface irregularities.

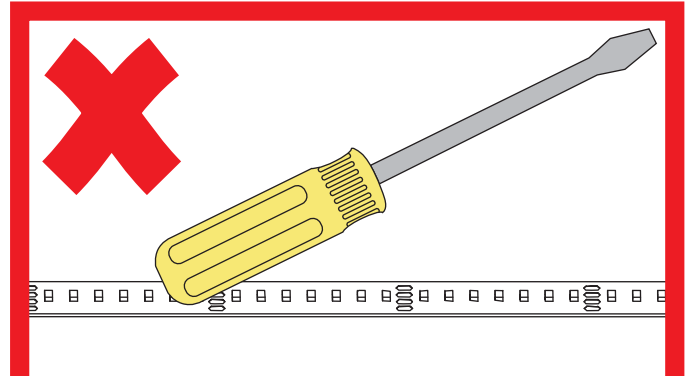
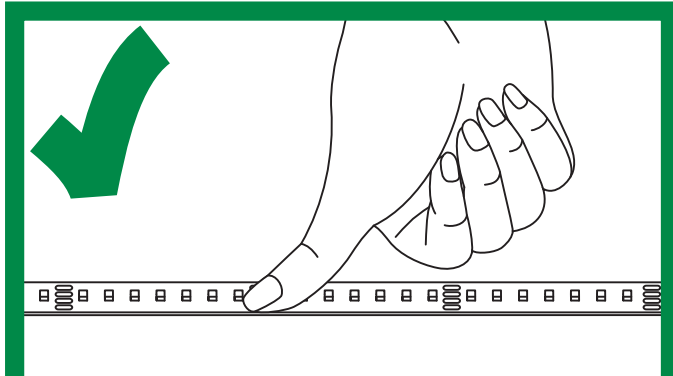
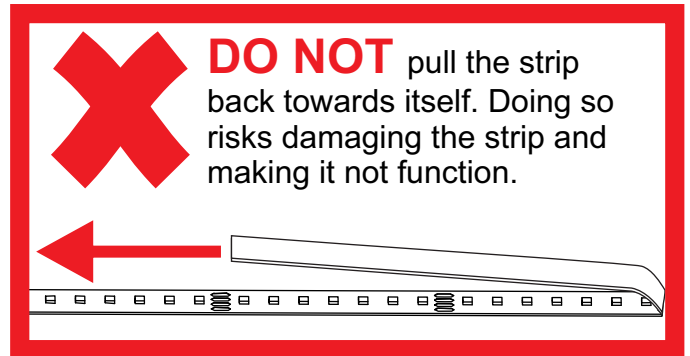
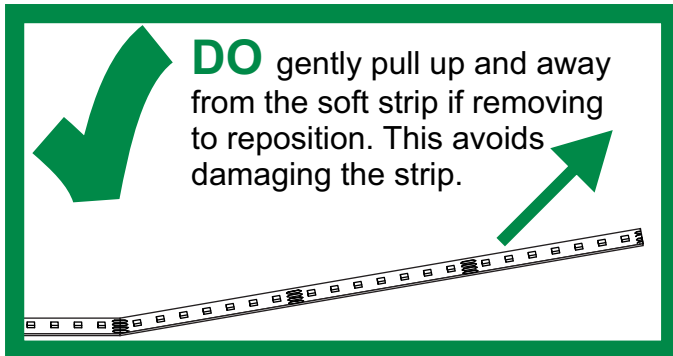
## General Wiring Diagram for LED Soft Strip



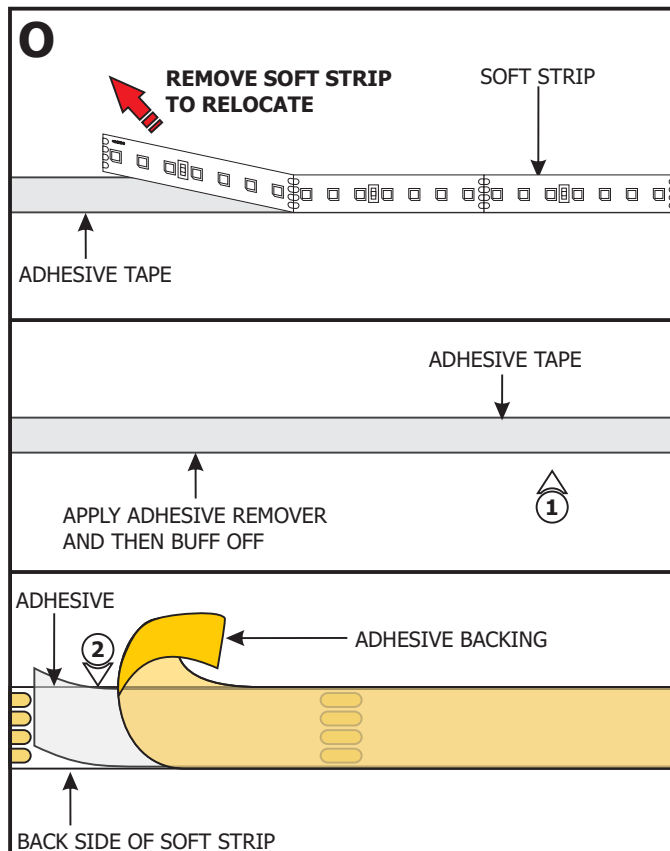
# General Wiring Diagrams for Track



## IMPORTANT INFORMATION REGARDING INSTALLATION AND REWORK OF SOFT STRIP LED



### Relocating Soft Strip (Optional)



**NOTE:** If relocating the installed soft strip, make sure that the adhesive tape on back of the soft strip covers the entire strip. The adhesive tape isolates the strip from the installation surface. Damaged or inconsistent adhesive tape may cause the contacts on the back of the strip to come in contact with the conductive heat sink which will cause the strip to short and burn. Call Edge Lighting to get replacement adhesive tape and/or optional aluminum heat sink tape (SS-HR-F).

- 1:** To remove tape residue from back of the strip, apply WD-40, Goo Gone, or a mixture of warm water and lemon oil to the corner of a clean, dry towel. Gently buff the area containing the adhesive residue until it is completely removed.
- 2:** Gently remove a few inches from one side of the tape backing. Attach the adhesive tape to the back of the soft strip and apply moderate pressure to affix the tape. Continue this step a few inches at the time until the entire adhesive tape is attached to back of the soft strip.
- 3:** Refer to Section Three reinstall the LED soft strips.