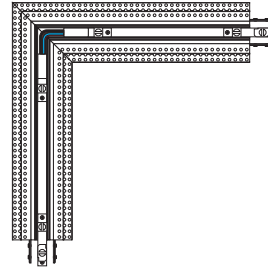




1718 W. Fullerton Chicago, IL 60614
 Ph: 773.770.1195 • Fax: 773.935.5613
 www.PureEdgeLighting.com • info@PureEdgeLighting.com
 © 2016 PureEdge Lighting. All Rights Reserved.

Installation Instructions for TruTrack Magnetic Two Circuit, Recessed 24VDC - L-Connector

TR24M-2C-L_C



IMPORTANT INFORMATION

- Read all of these installation instructions before installing the track system and refer to them when additions to or changes in the track configuration are made.
- **DO NOT** install this track in damp or wet locations.
- **DO NOT** install any part of a track system less than 5 feet above the floor. **DO NOT** install any luminaire assembly closer than 6 inches from any curtain or similar combustible material.
- Disconnect the electrical power before adding to or changing the configuration of the track.
- Only install luminaires identified with Pure Edge Lighting track systems. **DO NOT** attempt to connect any power tools and equipments to the track system.
- **DO NOT** overload each branch of track connected to the Track Power Feed Connectors resulting in a risk of fire.
- The system is "ETL" listed for USA and Canada only when all the products used are supplied by Pure Edge Lighting.
- **DO NOT** field modify this component.

GENERAL INFORMATION

- This instruction shows a typical installation.
- Before beginning any electrical work, ensure that the power to the electrical box is **OFF**.
- This product must be installed by a qualified electrician and in accordance with local electrical codes.

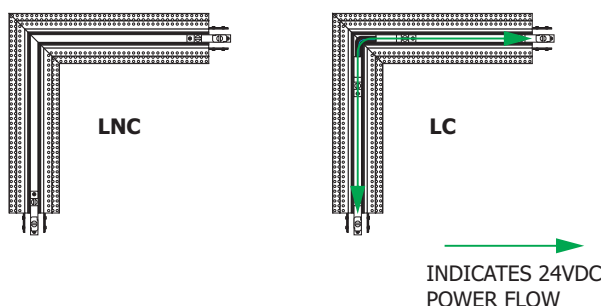


Scan with your mobile device for more information or visit
www.pureedgelighting.com/pureedge/products/trutrack_magnetic.php?bc=Product%2FRecessed%20Track

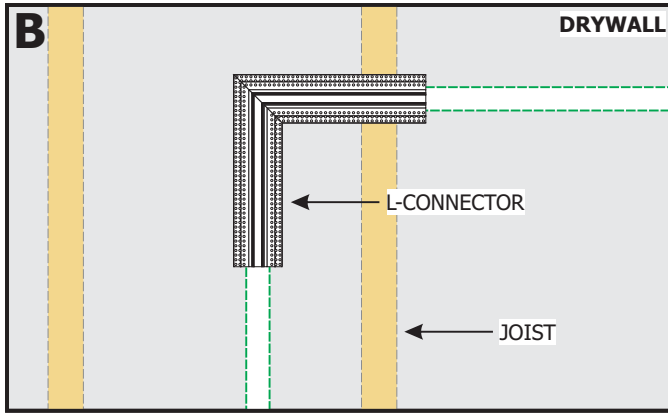
SAVE THESE INSTRUCTIONS!

Install the L-Connector

A



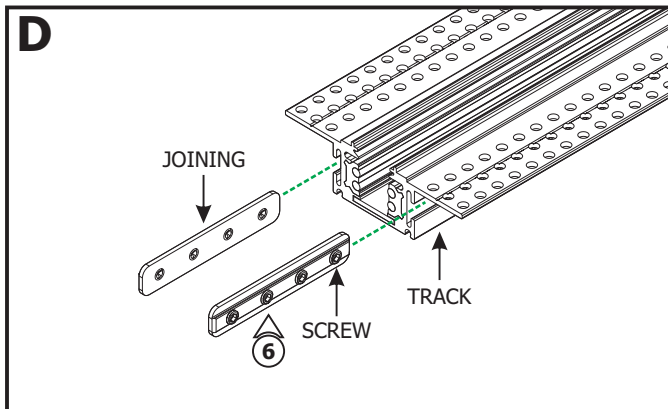
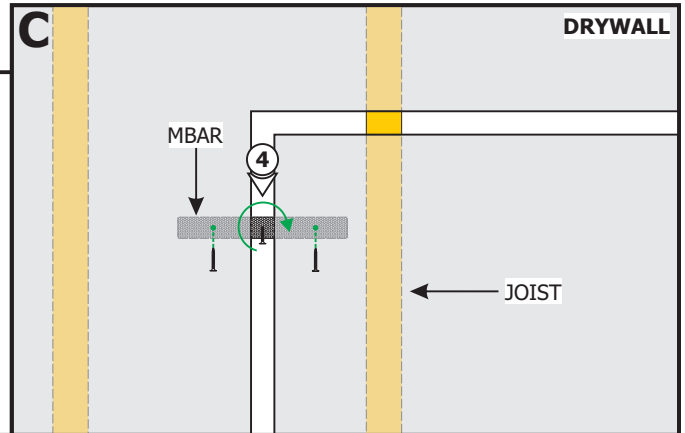
- 1:** L-Connectors join two track sections together in a 90 degree angle and either isolate the power from one track to the other (**LNC**) or conduct the power from one track to the other (**LC**).



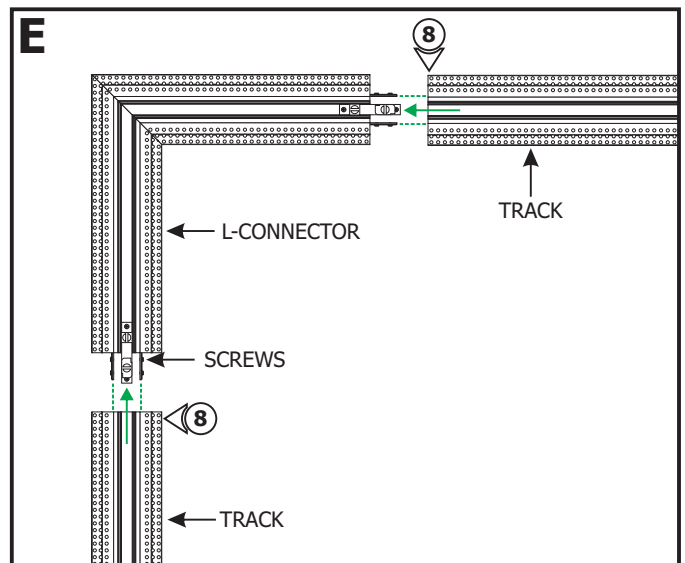
- 2:** Place the L-Connector against the ceiling. Ensure the L-Connector is aligned with the TruTrack installation location.
- 3:** Mark the installation location of the L-Connector on the drywall using a pencil or chalk line before cutting.

NOTE: Ensure both ends of the connector are supported with either a joist or mounting strap. To install the track without standard-spaced joists, install perforated mounting straps.

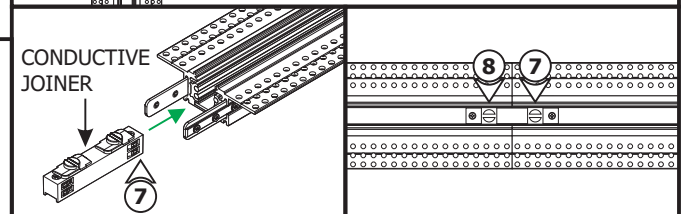
- 4:** For each mounting strap (**MBAR**), thread a drywall screw into the perforated material. Use the screw to hold and place the mounting strap behind the drywall, and then rotate it in place.
- 5:** Secure the mounting straps to the drywall on each side using two drywall screws. Mark the location of the mounting straps on the drywall.

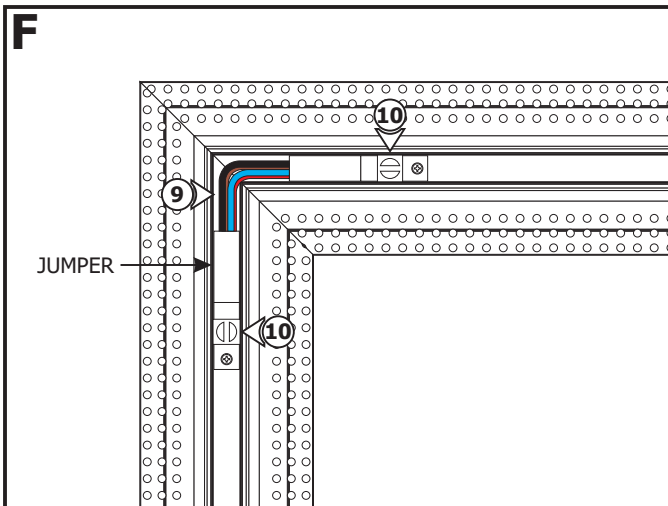


- 6:** Insert the joining connectors of the straight connectors half way into the track and tighten the screws.



- 7:** Insert the conductive joiner half way into the end of the L-Connector. Tighten the slotted screw using a flat-head screw driver.
- 8:** Slide a track over the joining connectors and conductive joiner. Tighten the remaining screws and slotted screw.

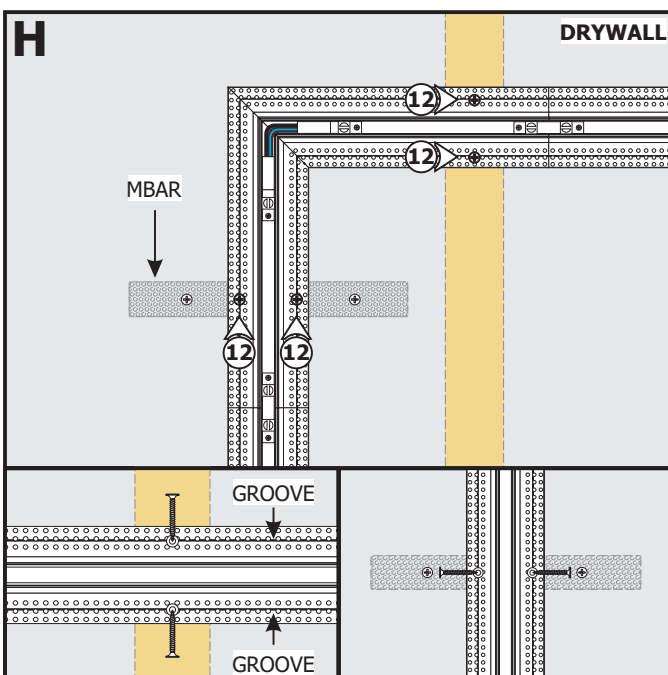
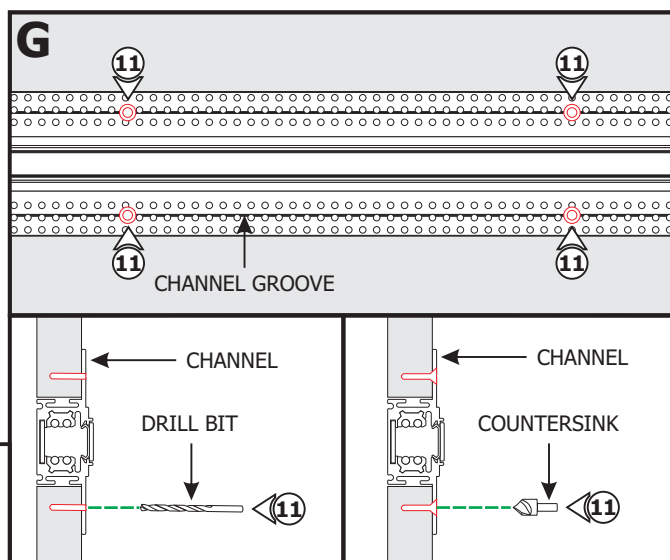




9: For the L-Connector Conductive (**LC**), place the Jumper Connector in the corner of the L-Connector.

10: Tighten the slotted screws to secure in place.

11: Place the assembled channel in the drywall cutout. Using the marked locations on the drywall, drill and countersink the channel using the provided square drill with counter-sink bit.



12: Place the L-Connector assembly inside the installation cut out and secure to the marked joists and mounting straps using drywall screws (**DO NOT over tighten**). Ensure all screw heads are flush with the channel surface.

NOTE: Refer to the TruTrack Recessed Channel instructions to complete the installation.