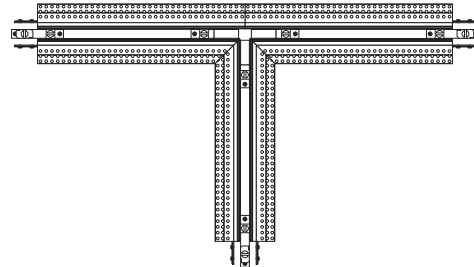




1718 W. Fullerton Chicago, IL 60614
 Ph: 773.770.1195 • Fax: 773.935.5613
 www.PureEdgeLighting.com • info@PureEdgeLighting.com
 © 2016 PureEdge Lighting. All Rights Reserved.

Installation Instructions for TruTrack Magnetic Two Circuit, Recessed 24VDC - T-Shaped Connector

TR24M-2C-T_



IMPORTANT INFORMATION

- Read all of these installation instructions before installing the track system and refer to them when additions to or changes in the track configuration are made.
- **DO NOT** install this track in damp or wet locations.
- **DO NOT** install any part of a track system less than 5 feet above the floor. **DO NOT** install any luminaire assembly closer than 6 inches from any curtain or similar combustible material.
- Disconnect the electrical power before adding to or changing the configuration of the track.
- Only install luminaires identified with Pure Edge Lighting track systems. **DO NOT** attempt to connect any power tools and equipments to the track system.
- **DO NOT** overload each branch of track connected to the Track Power Feed Connectors resulting in a risk of fire.
- The system is "ETL" listed for USA and Canada only when all the products used are supplied by Pure Edge Lighting.
- **DO NOT** field modify this component.

GENERAL INFORMATION

- This instruction shows a typical installation.
- Before beginning any electrical work, ensure that the power to the electrical box is **OFF**.
- This product must be installed by a qualified electrician and in accordance with local electrical codes.

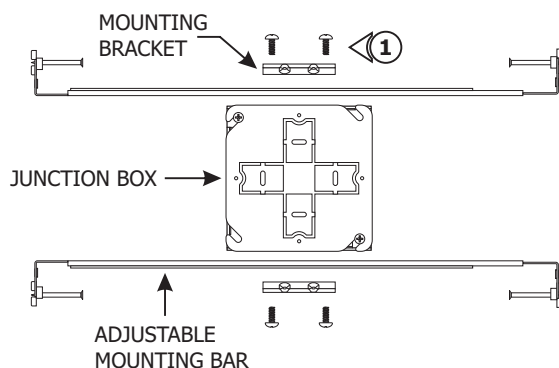


Scan with your mobile device for more information or visit
www.pureedgelighting.com/pureedge/products/trutrack_magnetic.php?bc=Products/Recessed/Recessed%20Track

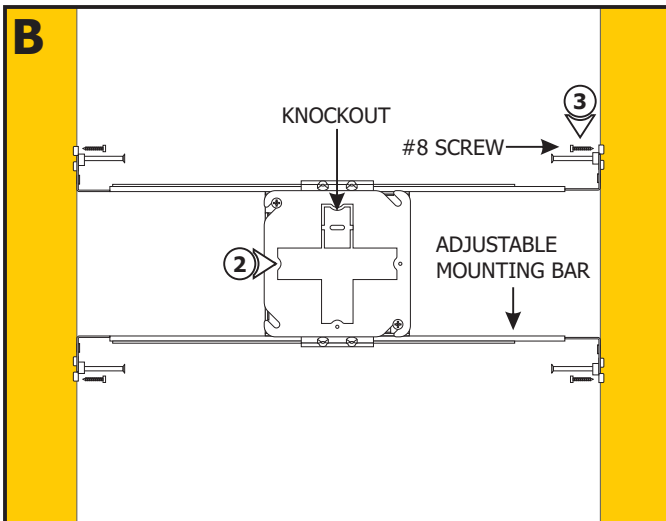
SAVE THESE INSTRUCTIONS!

Section One: Install the Junction Box

A



- 1:** Mount each adjustable mounting bar to one side of the junction box and secure them with the mounting brackets and two Phillips screws provided.

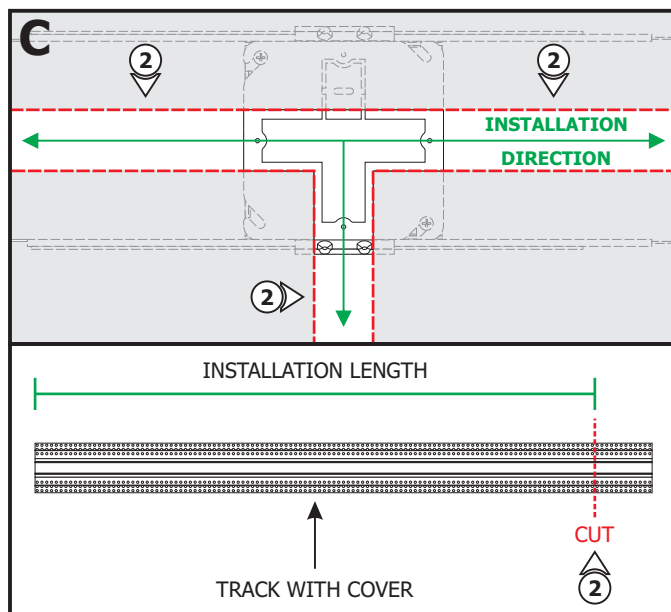


NOTE: Adjustable mounting bars mount to studs that are spaced 14.5" to 25" apart.

2: Select the appropriate knockouts on the mounting plate and remove it using a flathead screwdriver or other appropriate tool.

3: Place the adjustable mounting bar tabs against the ceiling joists. Secure the adjustable bars to the joists with the #8 screws.

Section Two: Install T-Shaped Connector



1: Cut a section of drywall to expose the junction box area. Install the drywall.

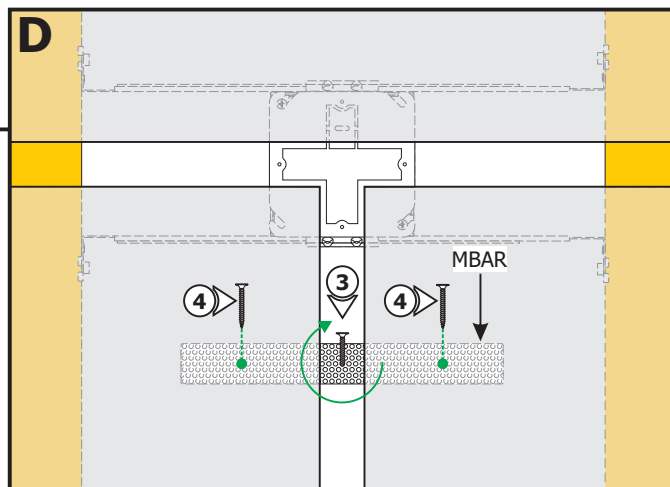
2: Mark and cut out the area where the installation will be located using the junction box opening as a guide.

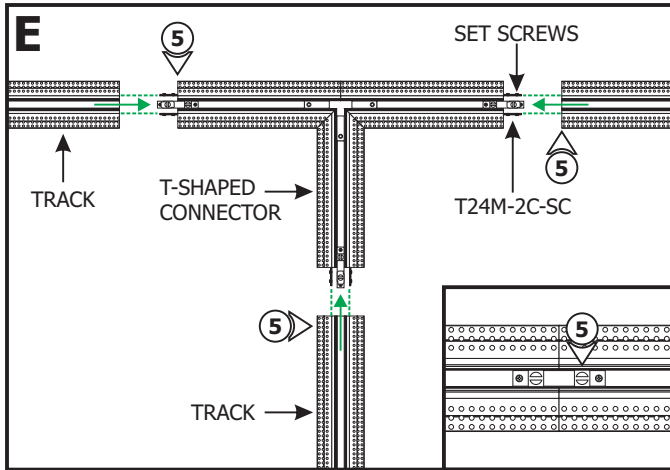
NOTE: Refer to the TruTrack Recessed Channel instructions to measure and cut the track and cover before continuing.

NOTE: Ensure all ends of the connector are supported with either a joist or mounting strap. To install the track without standard-spaced joists, install perforated mounting straps.

3: For each mounting strap (**MBAR**), thread a drywall screw into the perforated material. Use the screw to hold and place the mounting strap behind the drywall, and then rotate it in place.

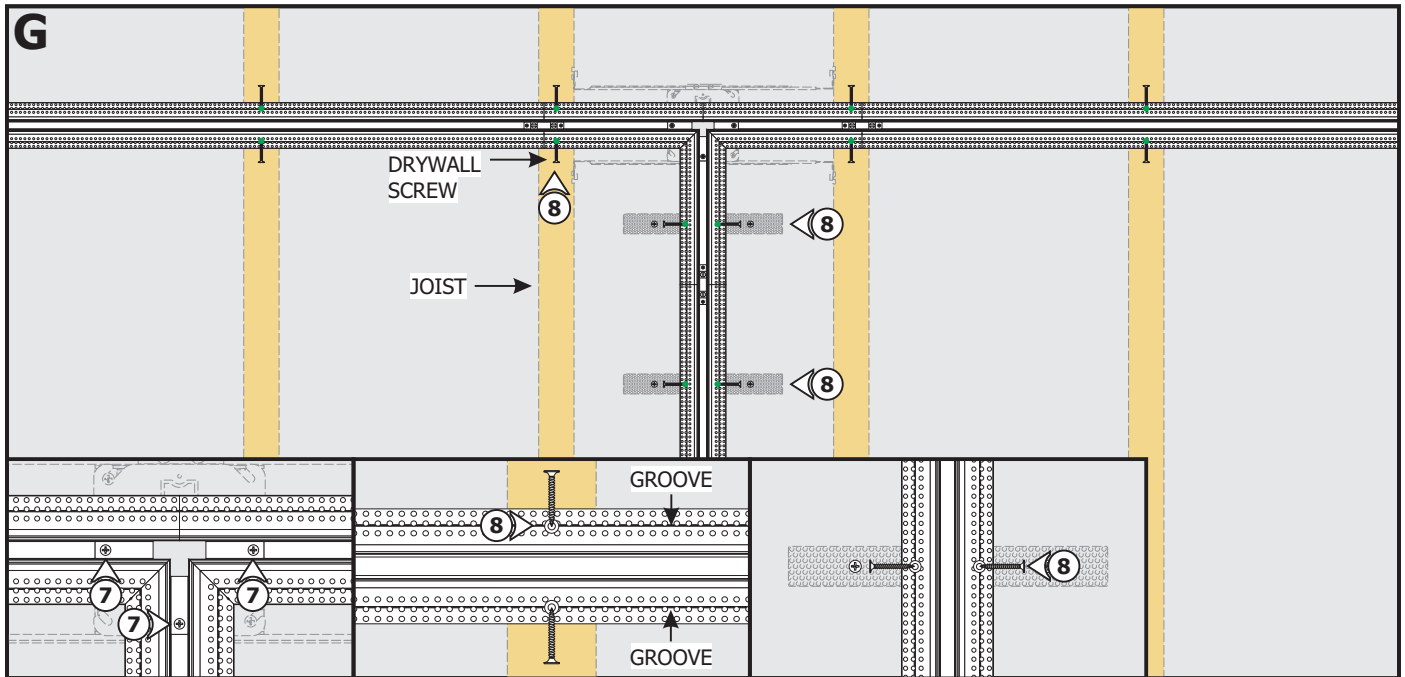
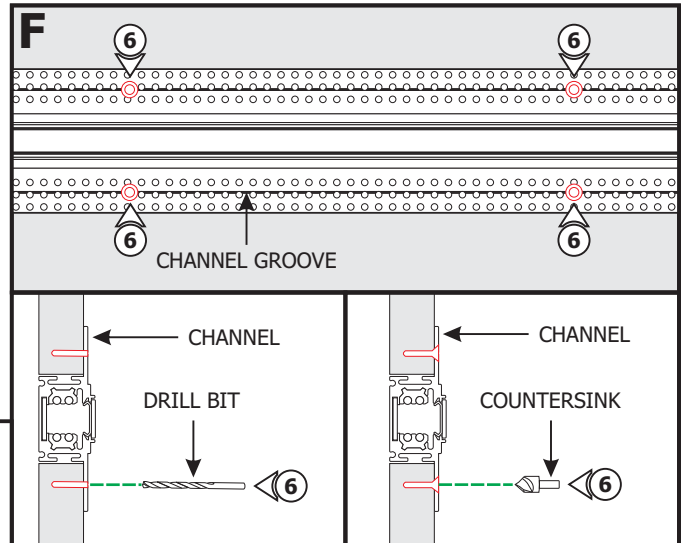
4: Secure the mounting straps to the drywall on each side of the junction box using two drywall screws. Mark the location of the mounting strap on the drywall.





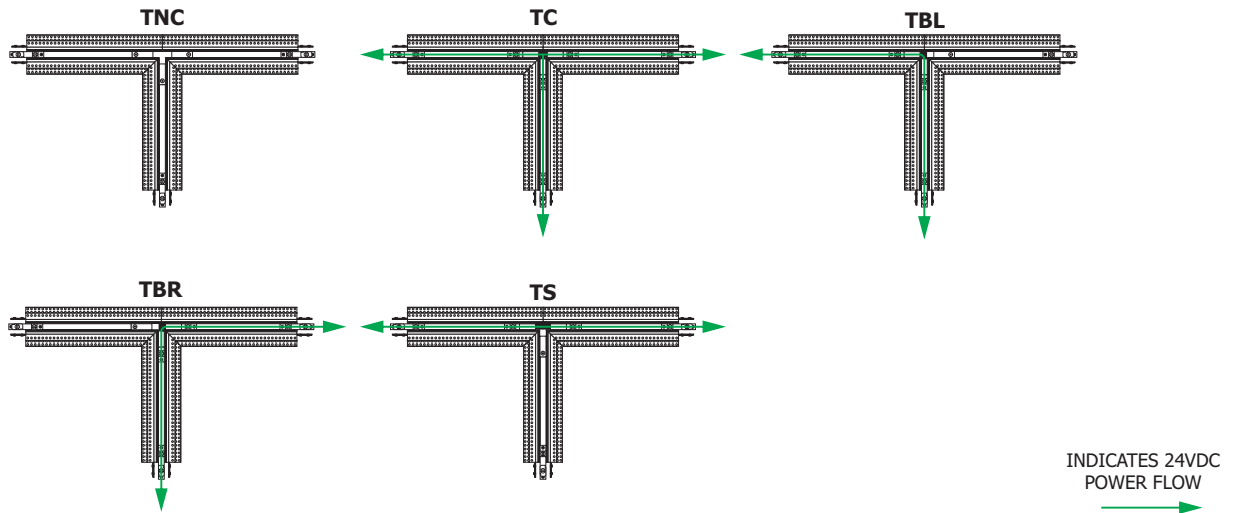
5: Align and slide tracks over the straight connectors (**T24M-2C-SC**) on the ends of the T-Shaped Connector. Tighten the set screws using an Allen wrench and the slotted screw on the straight connector using a flat-head screw driver.

6: Place the assembled channel in the drywall cutout. Using the marked locations on the drywall, drill and countersink the channel using the provided square drill with counter sink bit.

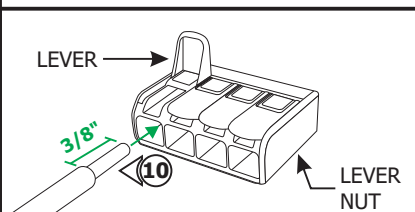
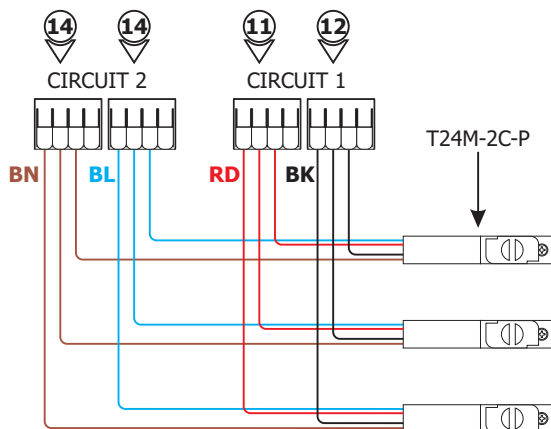


7: Secure the T-Shaped Connector to the junction box with the three Phillips screws.

8: Properly secure the channel to the marked joists and mounting straps using drywall screws (**DO NOT over tighten**). Ensure all screw heads are flush with the channel surface.

H

9: The T-Shaped Connector joins three sections of track channel together and either isolate the power of each channel (**TNC**) or conduct power to channel(s); all three channels (**TC**), the base to left channel (**TBL**), the base to right channel (**TBR**), and straight through two channels (**TS**).

I

NOTE: Depending on the design, discard any unused Power Feed connector(s).

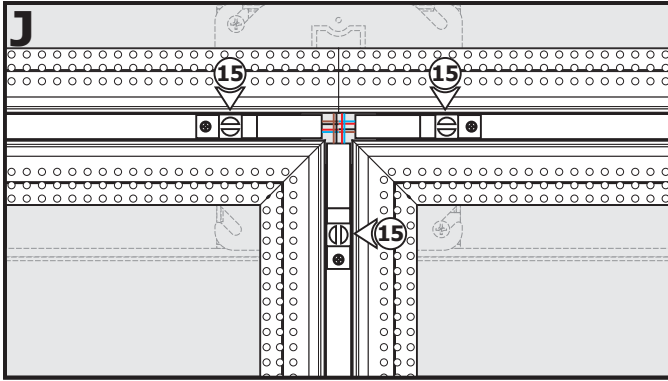
10: Strip 3/8" off of the Power Feed Connector (**T24M-2C-P**) wires.

11: Pull up the levers of one lever nut and insert the Circuit 1 POSITIVE red wire from each Power Feed Connector. Push the levers down to connect and lock into place.

12: Pull up the levers of the other lever nut and insert the Circuit 1 NEGATIVE black wire from each Power Feed Connector. Push the levers down to connect and lock into place.

13: Lightly tug on the wires to ensure they are secured in place. Place the lever nut connections inside the junction box one at a time.

14: Repeat steps 10 through 13 to connect the Circuit 2 POSITIVE blue wires from each Power Feed Connector together and the Circuit 2 NEGATIVE brown wires from each Power Feed Connector together.



15: Place the Power Feed Connectors inside the T-Shaped Connector and tighten the slotted screws using a flat-head screw driver to secure in place.

CAUTION: Test the circuits using a track head before plastering.

NOTE: Refer to the TruTrack Recessed Channel instructions to plaster and complete the installation.

