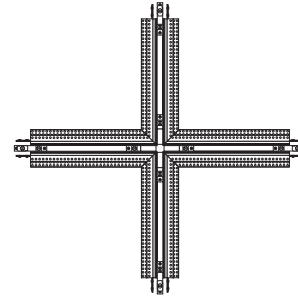




1718 W. Fullerton Chicago, IL 60614  
 Ph: 773.770.1195 • Fax: 773.935.5613  
[www.PureEdgeLighting.com](http://www.PureEdgeLighting.com) • [info@PureEdgeLighting.com](mailto:info@PureEdgeLighting.com)  
 © 2016 PureEdge Lighting. All Rights Reserved.

## Installation Instructions for TruTrack Magnetic Two Circuit, Recessed 24VDC - X-Shaped Power Connector

**TR24M-2C-XP**


### IMPORTANT INFORMATION

- Read all of these installation instructions before installing the track system and refer to them when additions to or changes in the track configuration are made.
- **DO NOT** install this track in damp or wet locations.
- **DO NOT** install any part of a track system less than 5 feet above the floor. **DO NOT** install any luminaire assembly closer than 6 inches from any curtain or similar combustible material.
- Disconnect the electrical power before adding to or changing the configuration of the track.
- Only install luminaires identified with Pure Edge Lighting track systems. **DO NOT** attempt to connect any power tools and equipments to the track system.
- **DO NOT** overload each branch of track connected to the Track Power Feed Connectors resulting in a risk of fire.
- The system is "ETL" listed for USA and Canada only when all the products used are supplied by Pure Edge Lighting.
- **DO NOT** field modify this component.

### GENERAL INFORMATION

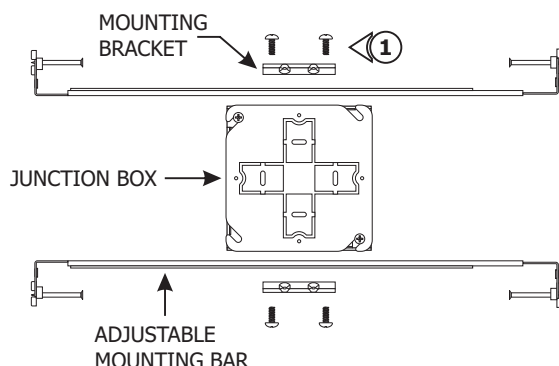
- This instruction shows a typical installation.
- Before beginning any electrical work, ensure that the power to the electrical box is **OFF**.
- This product must be installed by a qualified electrician and in accordance with local electrical codes.



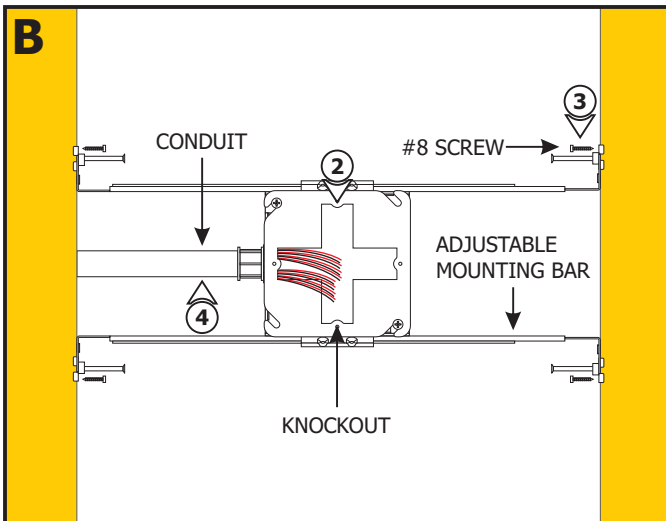
Scan with your mobile device for more information or visit  
[www.pureedgelighting.com/pureedge/products/trutrack\\_magnetic.php?bc=Products|Recessed|Recessed%20Track](http://www.pureedgelighting.com/pureedge/products/trutrack_magnetic.php?bc=Products|Recessed|Recessed%20Track)

**SAVE THESE INSTRUCTIONS!**

## Section One: Install the Junction Box

**A**


- 1:** Mount each adjustable mounting bar to one side of the junction box and secure them with the mounting brackets and two Phillips screws provided.



**NOTE:** Adjustable mounting bars mount to studs that are spaced 14.5" to 25" apart.

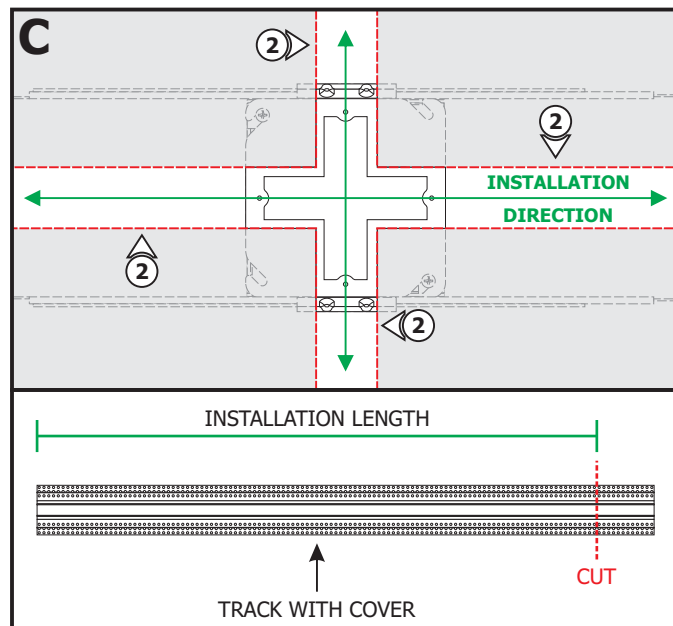
**2:** Select the appropriate knockouts on the mounting plate and remove it using a flathead screwdriver or other appropriate tool.

**3:** Place the adjustable mounting bar tabs against the ceiling joists. Secure the adjustable bars to the joists with the #8 screws.

**4:** Run the Class 2 24VDC low voltage wires coming from the remote power supplies to the junction box. Only install conduit if required by local electrical codes.

**NOTE:** Only use 0-10V and UNI power supplies with this product. See the wiring diagram provided with the power supply instructions.

## Section Two: Install X-Shaped Power Feed



**1:** Cut a section of drywall to expose the junction box area. Install the drywall.

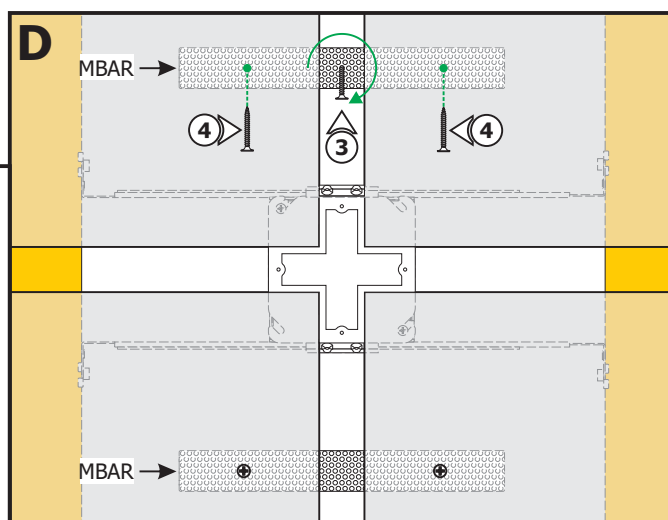
**2:** Mark and cut out the area where the installation will be located using the junction box opening as a guide.

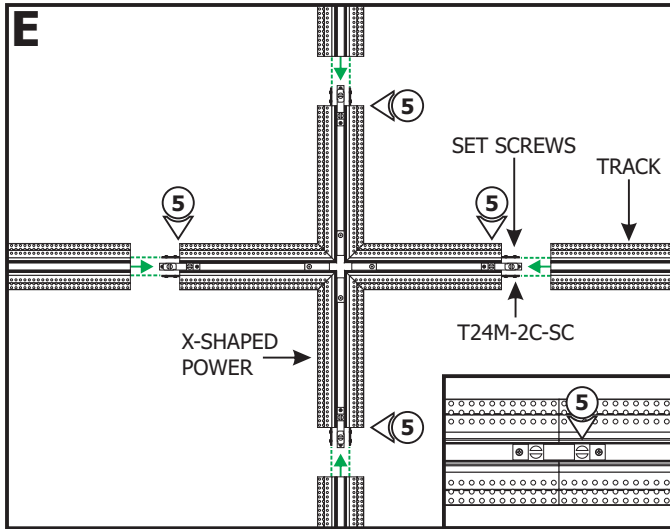
**NOTE:** Refer to the TruTrack Recessed Channel instructions to measure and cut the track and cover before continuing.

**NOTE:** Ensure all ends of the connector are supported with either a joist or mounting strap. To install the track without standard-spaced joists, install perforated mounting straps.

**3:** For each mounting strap (**MBAR**), thread a drywall screw into the perforated material. Use the screw to hold and place the mounting strap behind the drywall, and then rotate it in place.

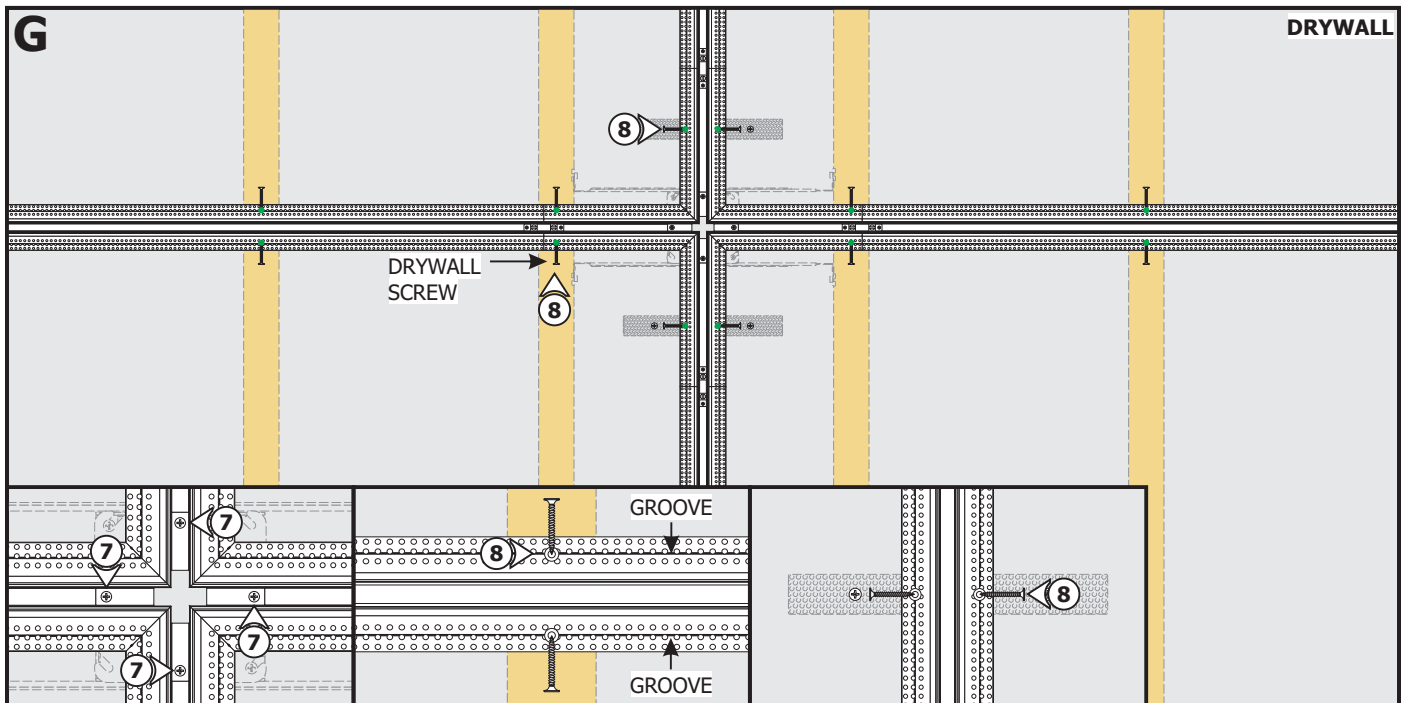
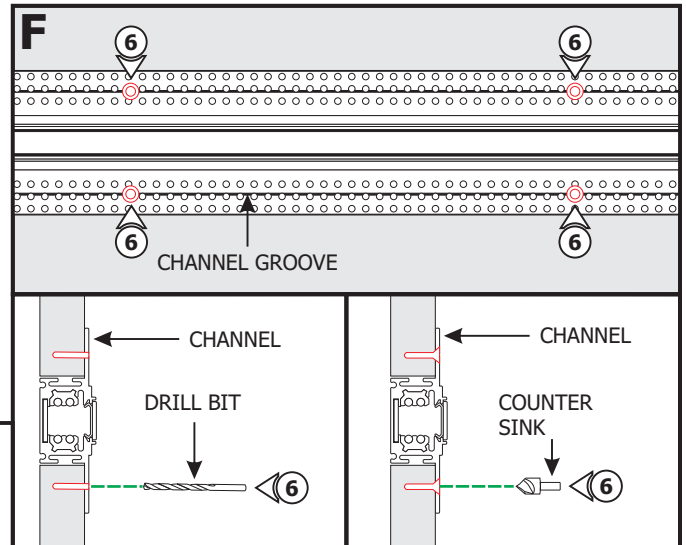
**4:** Secure the mounting straps to the drywall on each side of the junction box using two drywall screws. Mark the location of the mounting strap on the drywall.





**5:** Align and slide tracks over the straight connectors (**T24M-2C-SC**) on the ends of the X-Shaped Power Feed. Tighten the set screws using an Allen wrench and the slotted screw on the straight connector using a flat-head screw driver.

**6:** Place the assembled channel in the drywall cutout. Using the marked locations on the drywall, drill and countersink the channel using the provided square drill with counter sink bit.

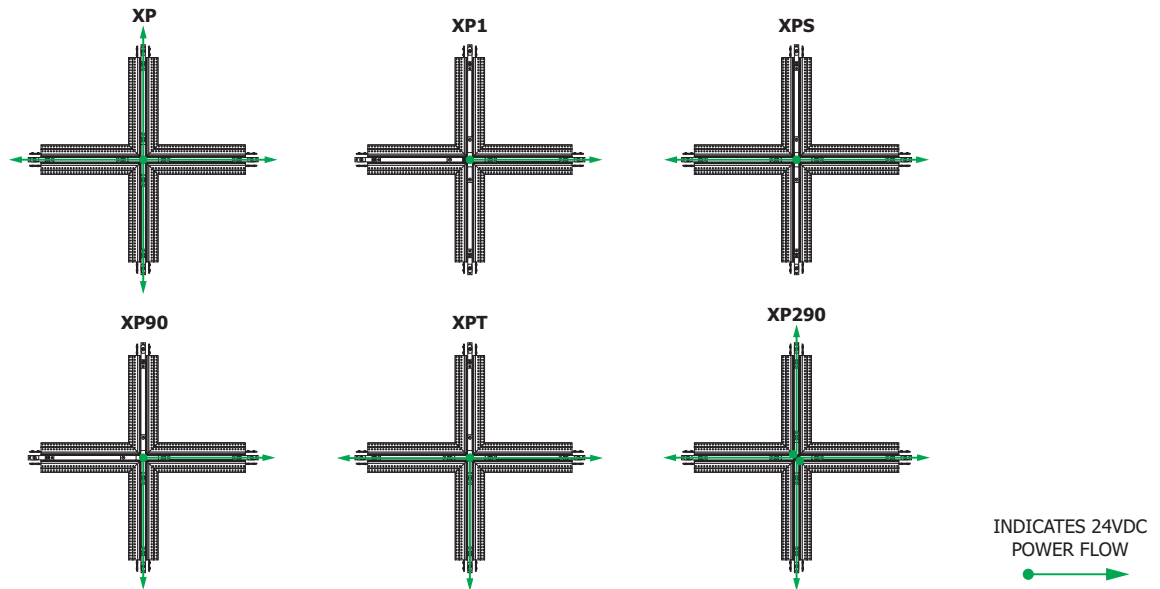


**7:** Secure the X-Shaped Power Feed to the junction box with the four Phillips screws.

**8:** Properly secure the channel to the marked joists and mounting straps using drywall screws (**DO NOT over tighten**). Ensure all screw heads are flush with the channel surface.

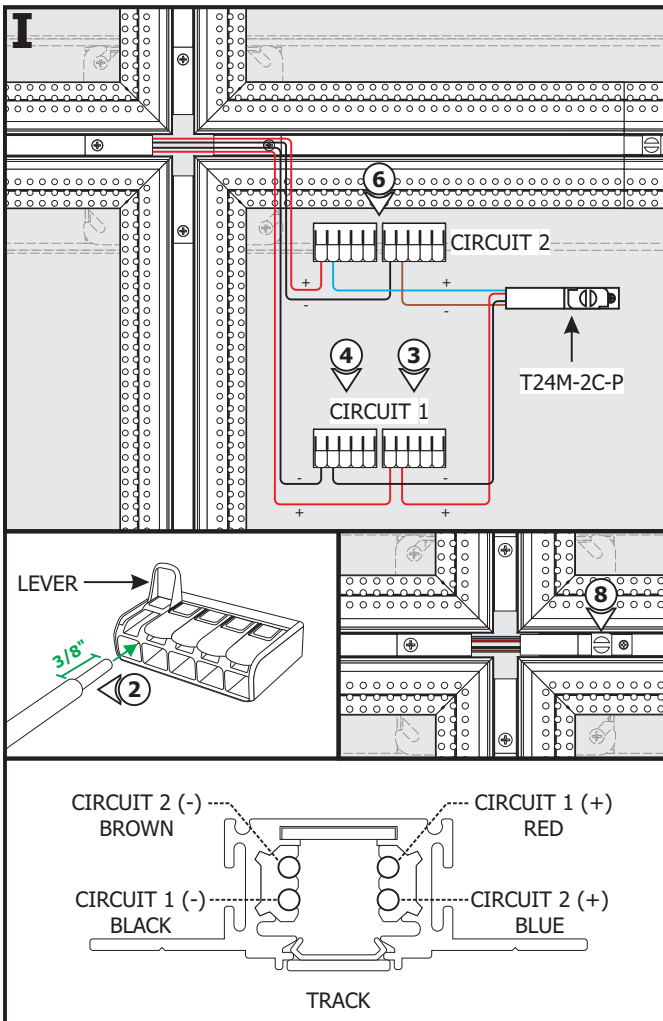
## Section Three: Power the Fixture

**H**



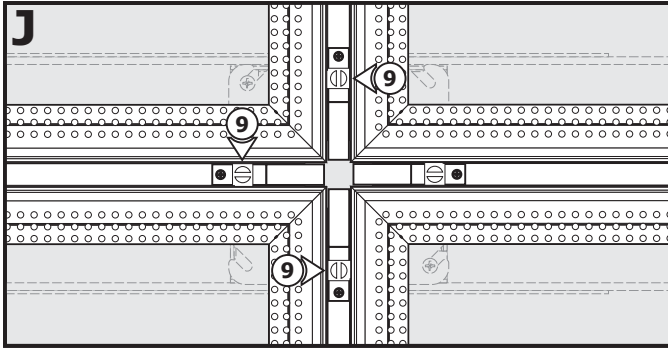
- 1:** The X-Shaped Power Feed joins four sections of track together and conduct power to all channels; all four channels (**XP**), one channel (**XP1**), straight through two channels (**XPS**), two channels in a 90° turn (**XP90**), three channels in a T-Shape (**XPT**), and four sections in two 90° turns (**XP290**).

**I**



**NOTE:** Depending on the design, discard any unused Power Feed Connectors. Refer to the general wiring diagram on page 6.

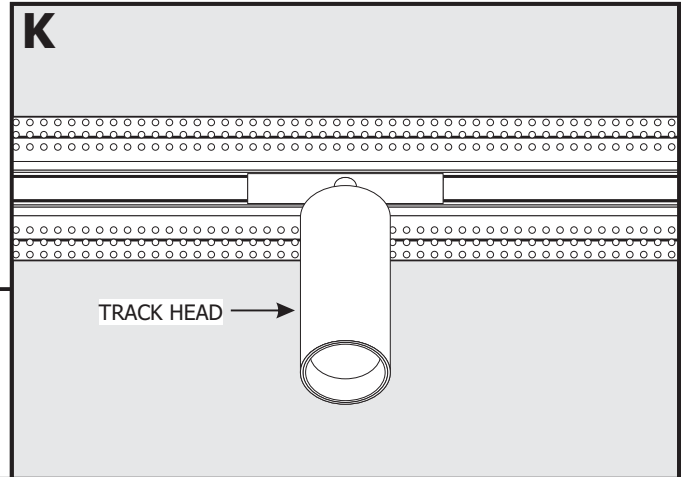
- 2:** Strip 3/8" off of the Power Feed Connector (**T24M-2C-P**) wires and the low voltage power supply wires.
- 3:** On the lever nut that the Circuit 1 POSITIVE red Power Feed Connector wire is connected, pull up the available lever and insert the low voltage +24VDC power supply wire. Push the lever down to connect and lock into place.
- 4:** On the lever nut that the Circuit 1 NEGATIVE black Power Feed Connector wire is connected, pull up the available lever and insert the low voltage -24VDC power supply wire. Push the lever down to connect and lock into place.
- 5:** Lightly tug on the wires to ensure they are secured in place.
- 6:** Repeat steps 2 through 5 to connect the Circuit 2 POSITIVE blue wire and NEGATIVE brown wire to the +24VDC wire and -24VDC wire of the other power supply respectively.
- 7:** Place the lever nut connections inside the junction box one at a time.
- 8:** Place the Power Feed Connector inside the X-Shaped Power Feed and tighten the slotted screw with a flat-head screw driver to secure in place.



**9:** Depending on the design, repeat steps 2 through 8 to connect the remaining Power Feed Connector to the remaining power supplies.

**CAUTION:** Test the circuits using a track head before plastering.

**NOTE:** Refer to the TruTrack Recessed Channel instructions to plaster and complete the installation.



# General Wiring Diagram

