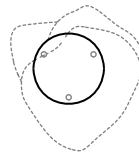


32  
(1.3') adjustable  
up to 3000  
(10')  
standard

adjustable  
up to 30500  
(100')  
custom

±260 - 400  
(10.5' - 15.7')



203 (8')

PENDANTS: three

MOUNTING: deep brushed nickel canopy 203mm (8") in diameter x 32mm (1.3") deep

LAMPING: 1.5w LED or 10w xenon

COAX: adjustable. 3000mm (10') standard / up to 30500mm (100') maximum

MATERIALS: blown glass, braided metal coaxial cable, electrical components, brushed nickel canopy

WEIGHT: approx. 8kg (18lb)

POWER SUPPLIES: integral. Power supplies included

#### DESCRIPTION

73.3 is a random configuration of three 73 pendants hung from a round canopy. The drop lengths of the pendants are randomized and are adjustable up to the specified maximum. The result is an ambient installation or field of light.

The 73 is formed by blowing liquid glass into a folded and highly heat-resistant ceramic fabric vessel. The resulting shape has a formal and textural expression intuitively associated with fabric, which becomes permanent and rigid as it cools. Each 73 is completely unique in proportion, size and shape.

#### NOTES

- + Purchase replacement lamps online at [www.bocci.com/shop/bulbs](http://www.bocci.com/shop/bulbs)
- + Unless otherwise noted when ordering, all fixtures will be outfitted to be xenon compatible
- + As an alternative to the junction box power supply, Bocci recommends mounting power supplies remotely in an easily accessible and hidden location for ease of long-term maintenance.

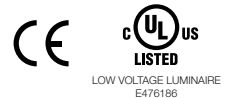
US Patent # D762,323 S  
EU Patent # 002633230-0001 - 0003

Made in Vancouver, Canada

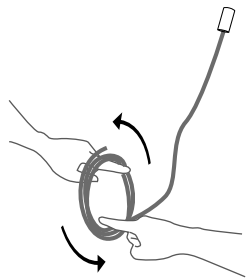
Vancouver  
[sales@bosci.com](mailto:sales@bosci.com)  
[www.bocci.com](http://www.bocci.com)

Berlin  
[europa@bosci.com](mailto:europa@bosci.com)  
[www.bocci.com](http://www.bocci.com)

approx. 8kg (18lb)



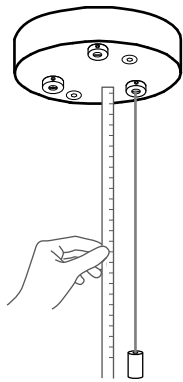
73.3 Design by Omer Arbel  
PRODUCT SPECIFICATION



1

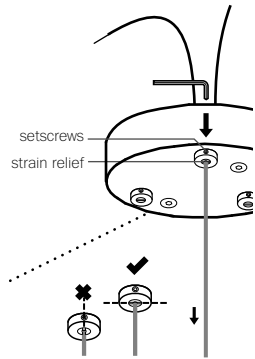
Very carefully uncoil the braided coaxial cable in a spool like manner. Insert your index fingers into opposite sides of the roll then rotate your fingers around each other to unroll the coaxial cable.

Use patience: allow the cable to uncoil completely to avoid kinks.



2

Determine the overall drop for the pendant fixture.



3

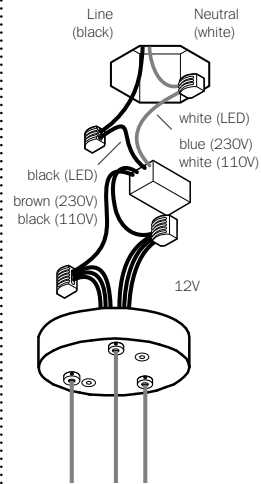
Thread the coaxial cables through the canopy, use a 2mm Allen key to loosen the setscrew in the canopy and gently feed the cable through until you have reached your desired drop length.

Use Allen key to tighten the setscrew to hold the strain relief and secure the coaxial cable at its new length. Perform a gentle tug test to ensure it is secure.

DO NOT OVERTIGHTEN.

Note: The strain relief is a black plastic collar around the coaxial cable. There is a single slot opening on the side of the strain relief component. It is essential that this opening is oriented at 90 degrees to set screw chamber. There can be no contact between the set screw and the cable.

RISK OF ELECTRIC SHORT!



4

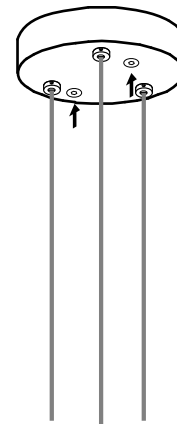
Xenon (110V) or LED: connect the black wire to black and white wire to white wire.

Xenon (230V): connect black wire to brown wire and white wire to blue wire.

Connect the coaxial cable to the open slots in the terminal block on the 12V side of the power supplies.

Ensure that the braided outer wires are all connected to one 12V output wire and all inner insulated wires are connected to the other or a short will occur.

Once all coaxial connections are made, lift the fixture into position and connect the line voltage to the open slot in the appropriate terminal block.

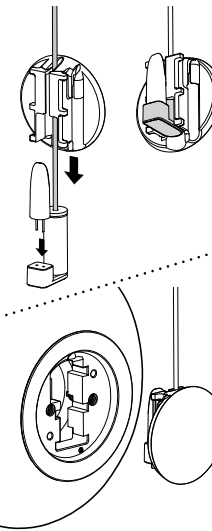


5

The client is responsible to ensure fasteners are attached to a robust structural substrate.

Tuck the power supply and wiring into the canopy. Line up the fastener holes or connect directly to structural ceiling surface using the fasteners provided.

Turn power to fixture on.

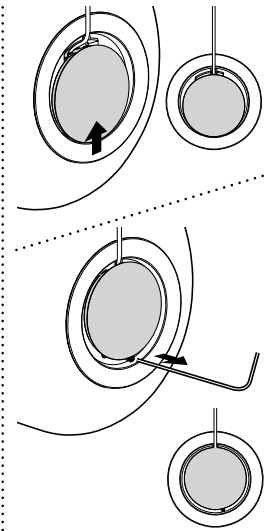


6

Plug the lamp into lamp socket. Check that each lamp is working properly as you go along.

Slide the slotted cap through the cable and push down to lock it in position.

Attach the pendant to the cap through the slotted grooves.



7

Slide the cap so the two circles are concentric. Partially unthread the exposed screw to lock the cap in position. DO NOT unthread the screw all the way.

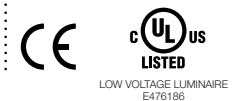
For additional assistance, please contact Bocci:

Vancouver  
sales@bocci.com  
www.bocci.com

Berlin  
europe@bocci.com  
www.bocci.com

US Patent # D762,323 S  
EU Patent # 002633230-0001  
- 0003

Made in Vancouver, Canada



73.3

Design by Omer Arbel  
PRODUCT INSTALLATION INSTRUCTIONS

© 2020, Bocci Design and Manufacturing Inc. All rights reserved. Any inquiries should be directed to: info@bocci.com

**BOCCI**