

Assembly and Installation Instructions for Model's

50014/150DW

CAUTION - RISK OF FIRE

Installation of this fixture should be done by a licensed electrician or by a person familiar with local electrical codes and the construction and operation of this fixture.

Warning please make sure the electrical breaker is shut off before commencing with this installation

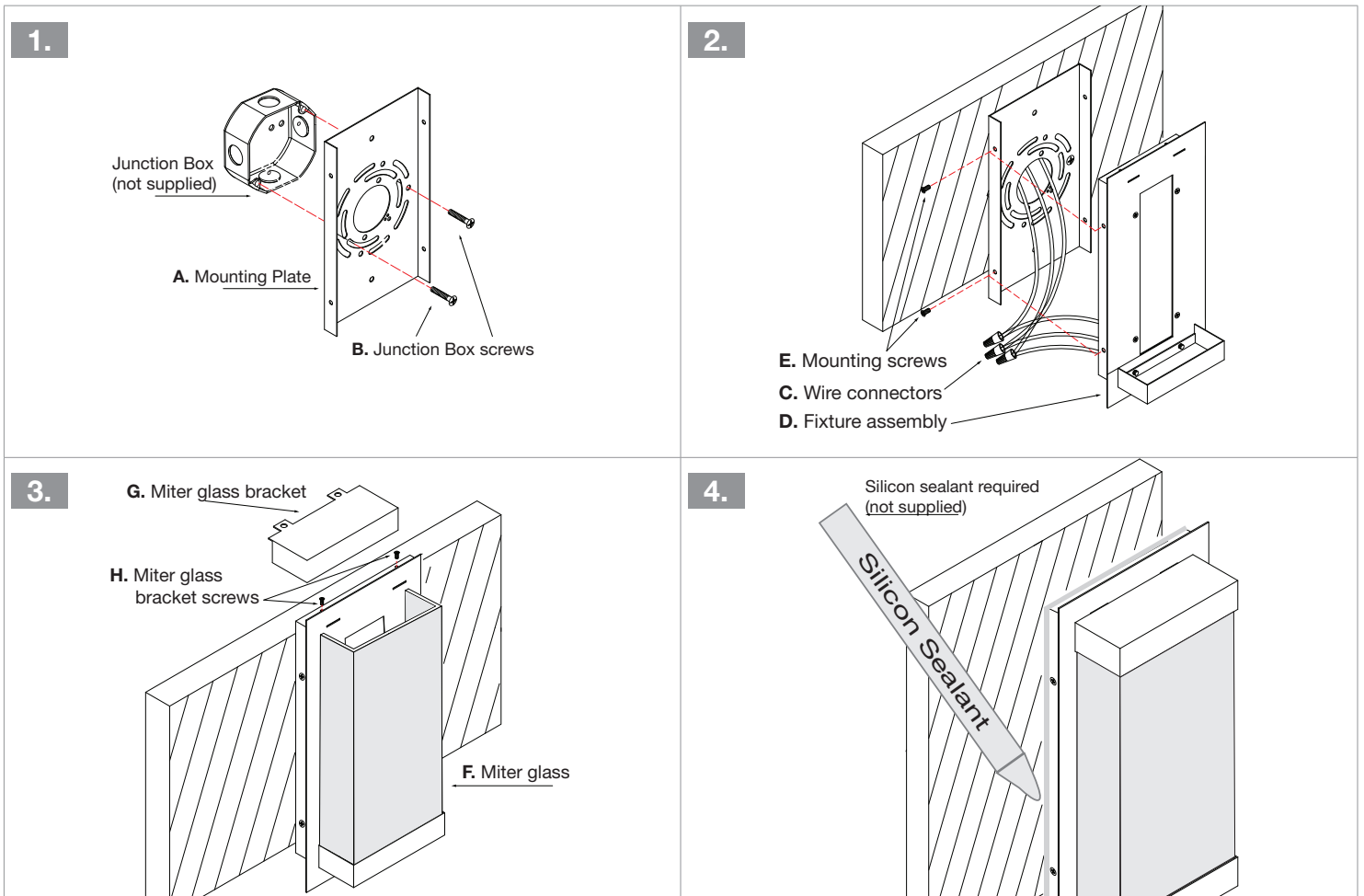
This fixture is certified for wall mounting only and is suitable for Wet locations

Important note

Suitable outdoor Silicon Sealant is required to ensure that the electrical connections are adequately protected

Package Contents

Part	Description	Qty	Part	Description	Qty
A	Mounting plate	1	B	Junction-Box mounting screws	2
C	Wire connectors	3	D	Fixture assembly	1
E	Fixture mounting screws	4	F	Miter glass	1
G	Miter glass bracket	1	H	Miter glass bracket screws	2



Installing the fixture *please ensure the electrical breaker is switched off before commencing*

- 1 Attach and **center** the Mounting plate (**A**) to the Junction box with supplied Junction-Box mounting screws (**B**).
- 2 Connect the Supply wires to the Fixture wires using the supplied Electrical wire connectors (**C**). White supply wire to the White fixture wire, Black supply wire to Black fixture wire and the ground Bare Copper or Green wire to the Green fixture wire. Once the Electrical wire connectors are securely fastened it is recommended to tape these connectors with electrical tape. Attach the Fixture assembly (**D**) to the Mounting bracket with supplied Mounting screws (**E**).
- 3 Insert the Miter glass (**F**) into the bottom of the fixture assembly (**D**) attach the Miter glass bracket (**G**) and secure with supplied Miter glass bracket screws (**H**).
- 4 Caulk all the edges with a suitable outdoor rated Silicon Sealant and reconnect the electrical breaker and the fixture is ready for use.

Instructions for Outdoor Fixtures and Maintenance Guidelines

Thank you for choosing an Abra outdoor fixture for your lighting needs. Proper installation and maintenance are essential to ensure the longevity and optimal performance of your fixture. Below are some guidelines to help you get the most out of your luminaire:

Regular Cleaning:

Periodical cleaning is crucial to remove salt, dirt, and other debris that can accumulate on the surface of your light that can cause premature failure of the finish and to avoid the finish becoming marred it is recommended to do the following at regular intervals

- Hose down the fixture with clean water
- If there is a residue build up, gently wash the fixture with dishwash solution.
- Avoid using harsh chemicals that may damage the materials or finish of the fixture.
- Rinse thoroughly with clean water to remove any residue.

Inspection and Maintenance:

Periodically inspect your light to ensure they are in optimal condition. Here's what to look for during inspections:

- Check for signs of corrosion, especially in coastal areas where salt exposure is higher.
- Inspect for loose connections and tighten them if necessary.
- Ensure all seals are intact and re-calk if damaged.

By following these guidelines, you can prolong the durability of your lighting fixtures and ensure they continue to provide reliable and efficient outdoor lighting for years to come. If you have any further questions or concerns, please don't hesitate to contact us for assistance.