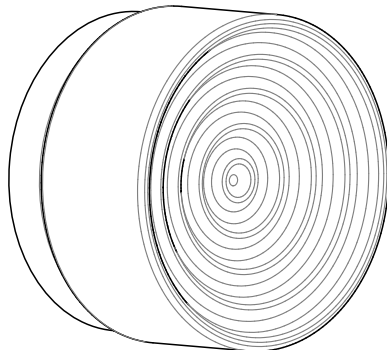
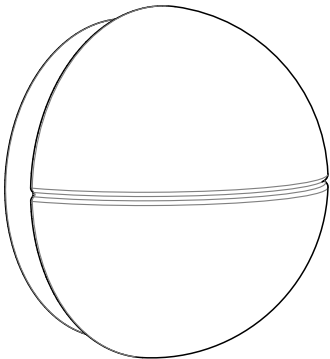
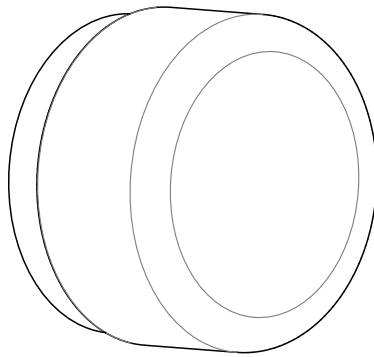
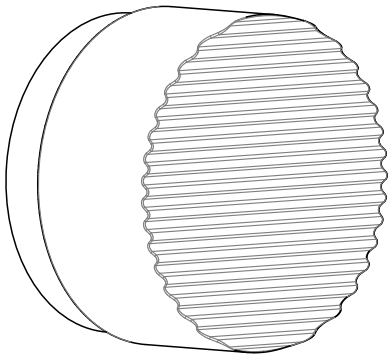


Crisp/Dimple/Phase/Ripple Sconce & Flush Mount

14126 rC

Low Voltage Input

Note: External power supply may be required.



CAUTION:

Before starting, turn off power
at main circuit panel.

ADVERTENCIA:

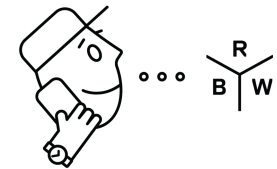
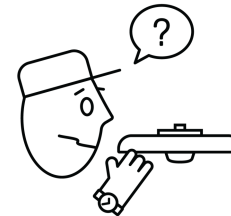
Antes de comenzar la instalación,
apague la corriente en el tablero
principal.

ATTENTION:

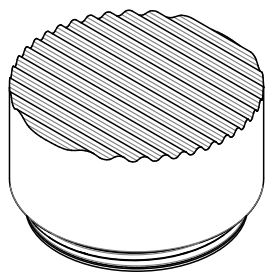
Coupez l'alimentation avant de
procéder à l'installation.



Calling for backup? Scan above
to contact our team.



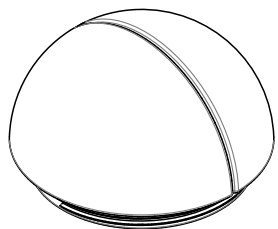
www.RBW.com
+1 212 388 0399
support@RBW.com
© RBW Studio LLC, 2013, 2020



Crisp Glass

Part numbers may vary. See order for details

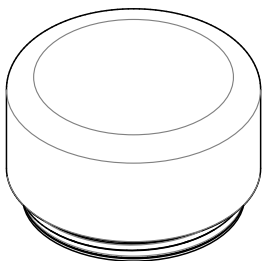
Part Number	Description
12220	Crisp Glass Clear & Painted White IP65
12221	Crisp Glass Chrome & Painted White IP65
12222	Crisp Glass Clear & Frosted IP65
12223	Crisp Glass Copper & Painted White IP65



Phase Glass

Part numbers may vary. See order for details

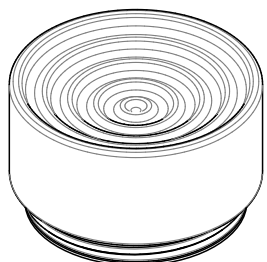
Part Number	Description
14212	Phase Glass IP65



Dimple Glass

Part numbers may vary. See order for details

Part Number	Description
14149	Dimple Glass Clear & Painted White IP65
14151	Dimple Glass Clear & Smoked IP65
14155	Dimple Glass Frosted IP65
14153	Dimple Glass Clear & Amber IP65

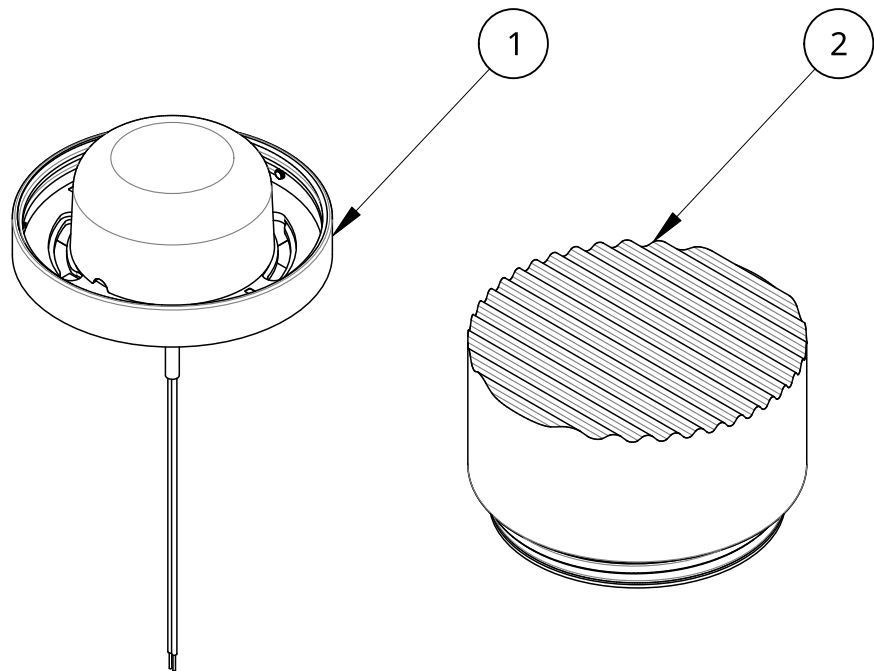


Ripple Glass

Part numbers may vary. See order for details

Part Number	Description
17869	Ripple Glass w Gasket. White Interior.
17886	Ripple Glass w Gasket. Smoked.
17887	Ripple Glass w Gasket. Frosted Exterior.
17888	Ripple Glass w Gasket. Copper Exterior.
17889	Ripple Glass w Gasket. Bottle Green.

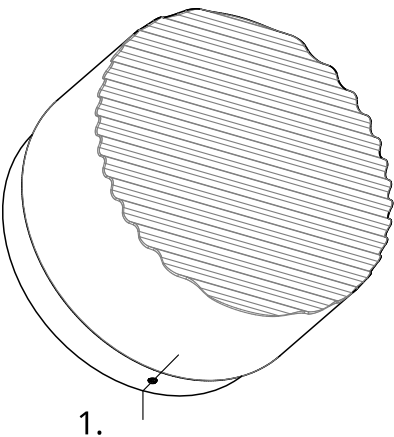
What's Included: Part Configurations May Vary



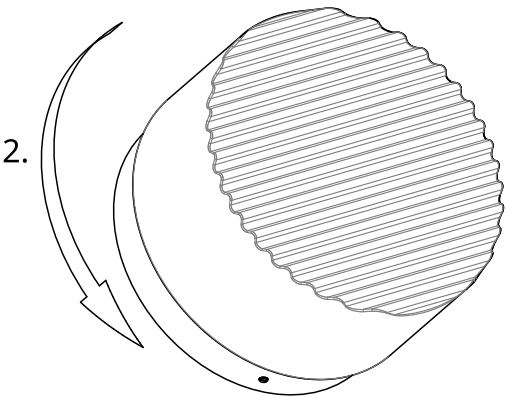
Item	Qty	Part number	Description
1	1	12698-AA01-27	Package: 12698. Round LED Module 5" Clear Anodize 2700K CCT
2	1	12220	Package: Crisp Glass Clear & Painted White IP65

Before Installing

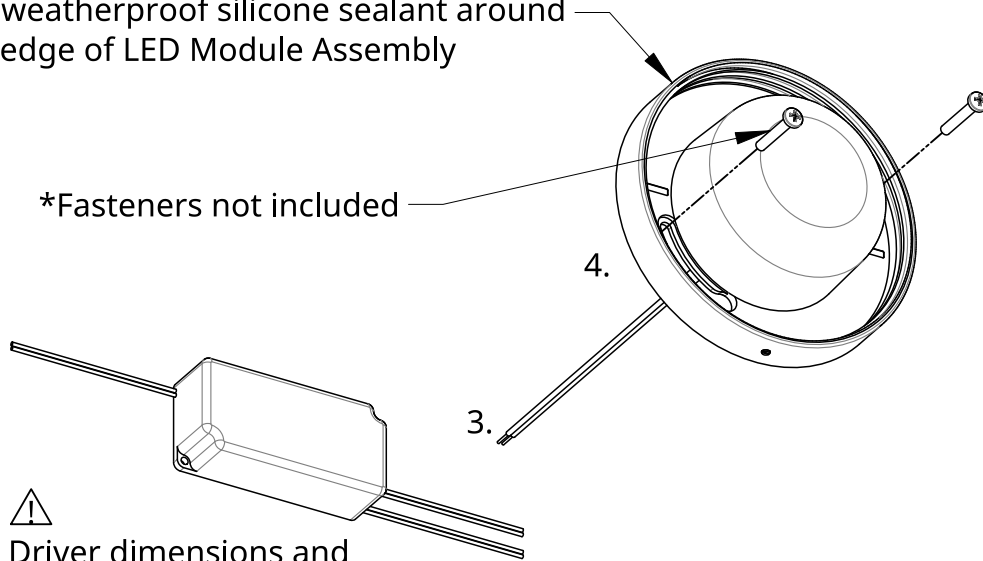
1. To ensure tight seal, preassemble fixture with glass in desired orientation and make a non-permanent mark on top of the wall mount, with set screw facing down.



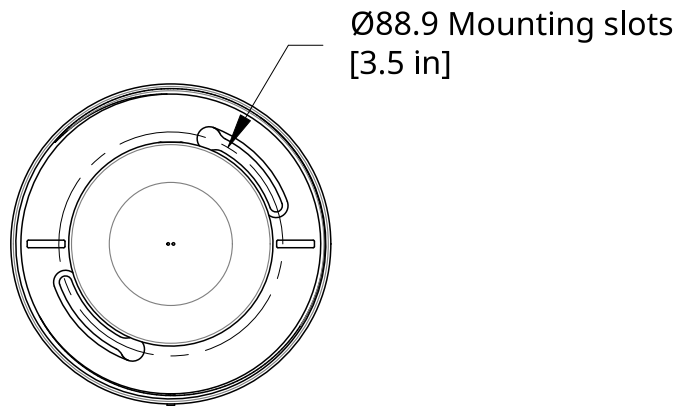
2. After marking fully assembled product, remove Glass.



For weatherproof installations: Apply weatherproof silicone sealant around edge of LED Module Assembly

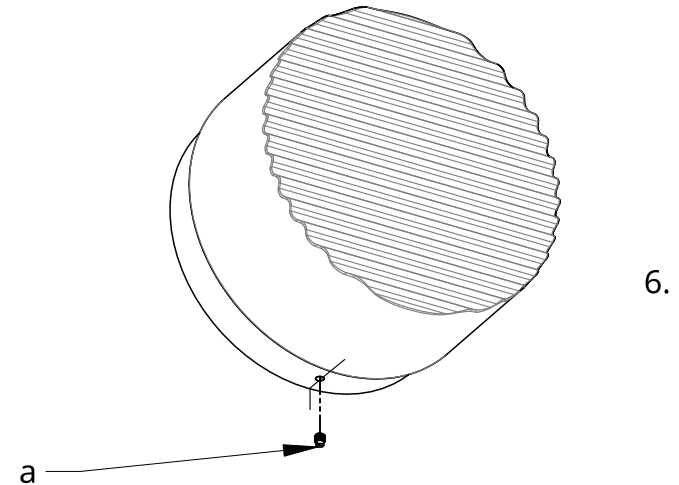
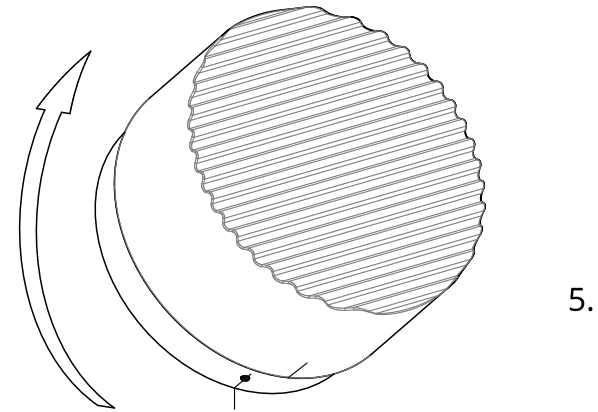


⚠
Driver dimensions and location may vary, consult your order confirmation for details.



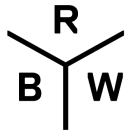
Installation - LED Mount

3. Connect Red (+) and Black (-) Sconce wires to low voltage leads from externally located driver.
4. Fix LED Module Assembly to desired mounting surface with appropriate fasteners.



Installation - Crisp Glass Diffuser

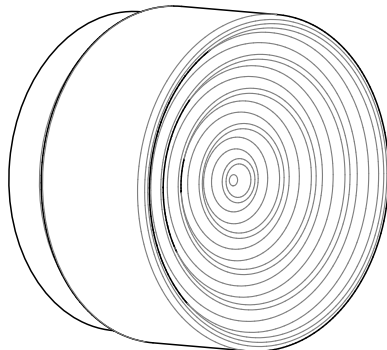
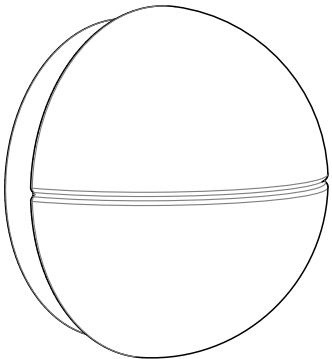
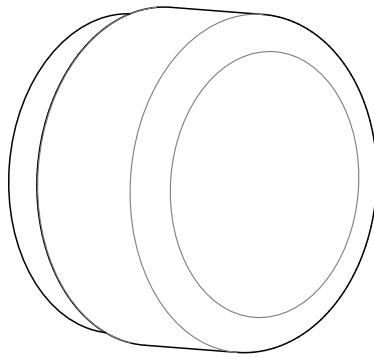
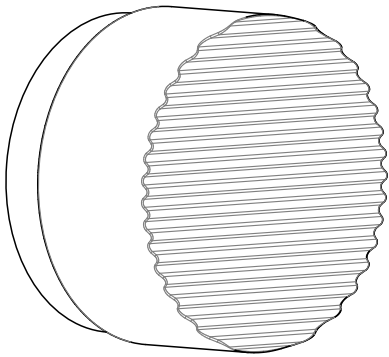
5. Thread glass shade clockwise into LED Module Assembly until fixture is secure.
6. Drive nylon set screw (a) into LED Module Assembly to secure fixture into place.
7. Congratulations! End of guide.



Crisp/Dimple/Phase/Ripple Sconce & Flush Mount

18319 rA

AC Input



CAUTION:

Before starting, turn off power
at main circuit panel.

ADVERTENCIA:

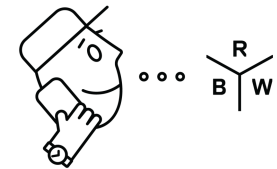
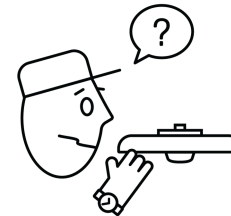
Antes de comenzar la instalación,
apague la corriente en el tablero
principal.

ATTENTION:

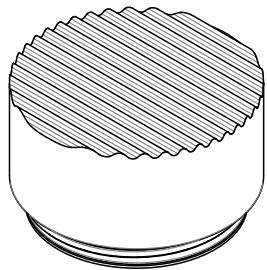
Coupez l'alimentation avant de
procéder à l'installation.



Calling for backup? Scan above
to contact our team.



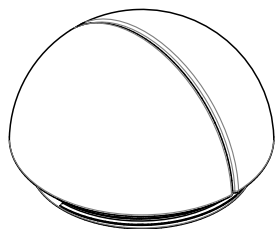
www.RBW.com
+1 212 388 0399
support@RBW.com
© RBW Studio LLC, 2013, 2020



Crisp Glass

Part numbers may vary. See order for details

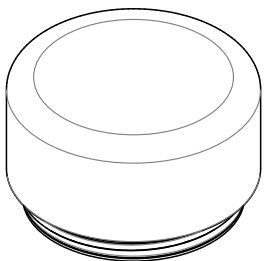
Part Number	Description
12220	Crisp Glass Clear & Painted White IP65
12221	Crisp Glass Chrome & Painted White IP65
12222	Crisp Glass Clear & Frosted IP65
12223	Crisp Glass Copper & Painted White IP65



Phase Glass

Part numbers may vary. See order for details

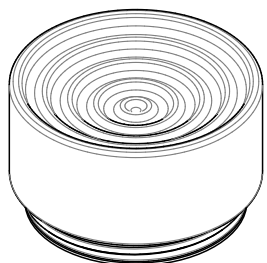
Part Number	Description
14212	Phase Glass IP65



Dimple Glass

Part numbers may vary. See order for details

Part Number	Description
14149	Dimple Glass Clear & Painted White IP65
14151	Dimple Glass Clear & Smoked IP65
14155	Dimple Glass Frosted IP65
14153	Dimple Glass Clear & Amber IP65

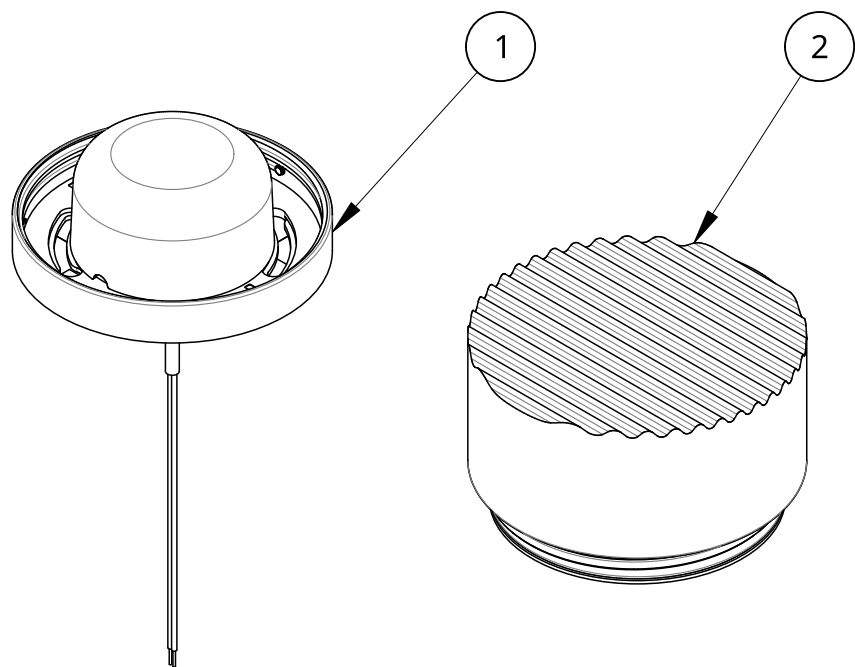


Ripple Glass

Part numbers may vary. See order for details

Part Number	Description
17869	Ripple Glass w Gasket. White Interior.
17886	Ripple Glass w Gasket. Smoked.
17887	Ripple Glass w Gasket. Frosted Exterior.
17888	Ripple Glass w Gasket. Copper Exterior.
17889	Ripple Glass w Gasket. Bottle Green.

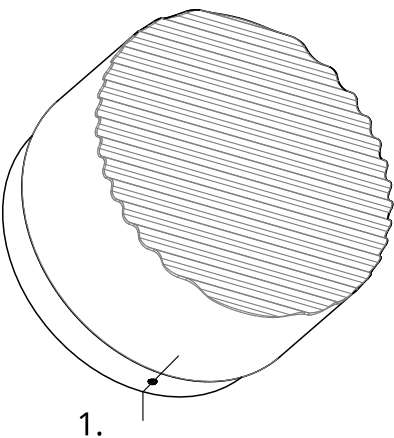
What's Included: Part Configurations May Vary



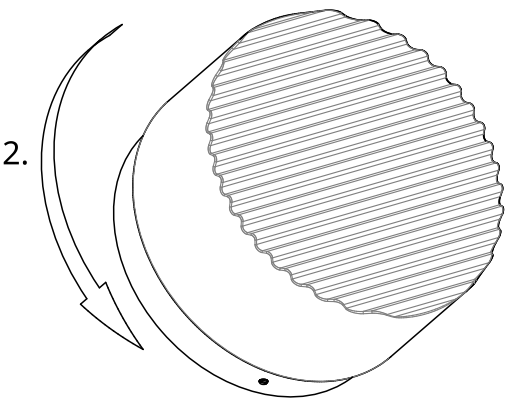
Item	Qty	Part number	Description
1	1	18316-AA01-27	Package: 18316. Round LED Module 5" Clear Anodize 2700K CCT
2	1	12220	Package: Crisp Glass Clear & Painted White IP65

Before Installing

1. To ensure tight seal, preassemble fixture with glass in desired orientation and make a non-permanent mark on top of the wall mount, with set screw facing down.

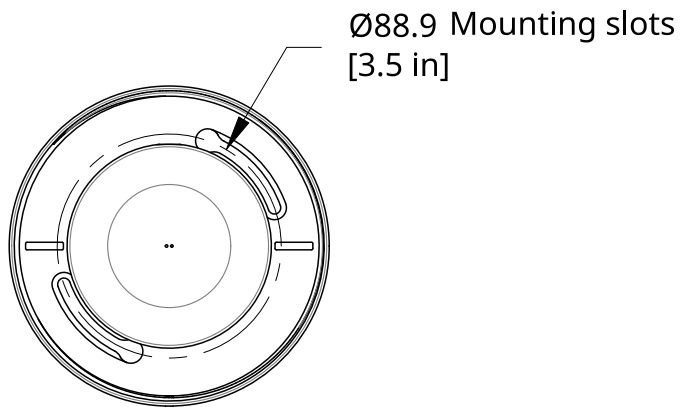
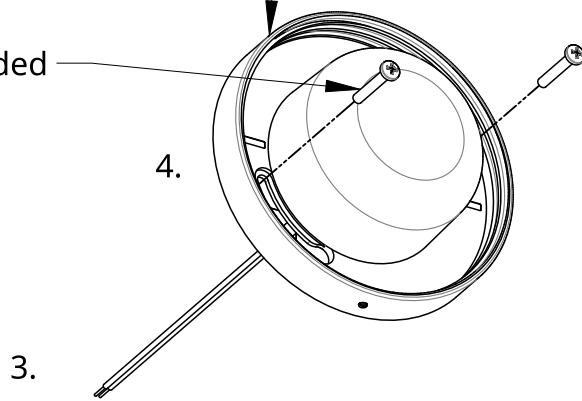


2. After marking fully assembled product, remove Glass.



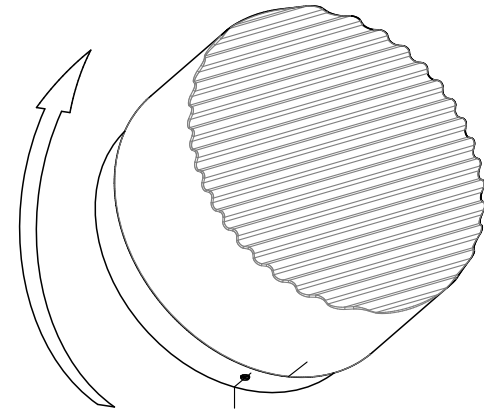
For weatherproof installations: Apply weatherproof silicone sealant around edge of LED Module Assembly

*Fasteners not included

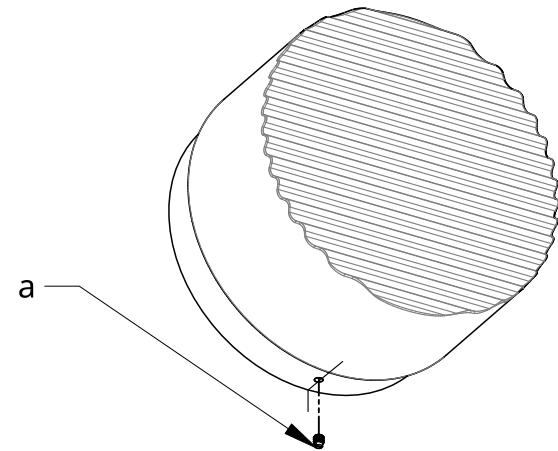


Installation - LED Mount

3. Connect Black (L) and White (N) Sconce wires to power feed.
4. Fix LED Module Assembly to desired mounting surface with appropriate fasteners.



5.



6.

Installation - Crisp Glass Diffuser

5. Thread glass shade clockwise into LED Module Assembly until fixture is secure.
6. Drive nylon set screw (a) into LED Module Assembly to secure fixture into place.
7. Congratulations! End of guide.