

CODY 2 LED PICTURE LIGHT - 97+CRI



AVAILABLE: BEGINNING OF 4TH QUARTER



Cody 6 provides uniform illumination to frames from 8" W x 10" H to 24" W x 18" H (photometrics on next page)

Cody 12 provides uniform illumination to frames from 24" W x 32" H to 32" W x 32" H (photometrics on next page)

Description

Cody 2 LED Picture Light provides uniform warm white illumination. The 97+CRI light easily replaces a high wattage T-type incandescent or halogen MR16 without harmful IR, UV or mercury. The fixture head has a 90° vertical adjustment range and is dimmable with an electronic low voltage dimmer. Cody's LEDs provide 50,000 hours or about 20 years of economic, maintenance-free light, when operated at 6 hours per day, resulting in a low cost of ownership. Fixture includes 5 year warranty.

Finish

Satin Nickel or Antique Bronze

Mounting

Easily mounts to wood frame, metal frame or wall. Canopy version mounts to standard rectangle or round junction box with transformer tuck inside. 120-12V volt plug-in version comes with 10 ft long cord and transformer. Adjustable mounting bracket for frames up to 50 lbs is provided.

Lamp Specification

Cody 6: 7.3 total watts, 2961K, 97CRI LED, 198 lumens 27 lumens per watt, 97.6 R9 value; 70% lumen maintenance based on 50,000 hours of operation
 Cody 12: 13.5 total watts, 2961K, 97CRI LED, 401 lumens 29 lumens per watt, 95.2 R9 value; 70% lumen maintenance based on 50,000 hours of operation

Adjustability

Pivots 0° to 90° vertical and 0° to 20° horizontal

Dimming Information

Dimmable with Lutron Skylark or Diva electronic low voltage dimmers. For additional details, see Cody Dimming Chart at www.edgelighting.com

Power Supply

Constant current 350 mA driver - Dimmable with low voltage electronic dimmer.

Dimensions

Cody 6 H 1.65" x W 6.4" x D 11.12" (H 4.2cm x W 16.25cm x D 28.25cm)
 Cody 12 H 1.65" x W 12.4" x D 13" (H 4.2cm x W 31.5cm x D 33cm)



Canopy

Fixture	Size (Shade)	Finish	Voltage
CPL2	6	SN	Standard with Canopy (leave blank)
<small>CPL Cody Picture Light 2</small>	<small>6 6.4" (16.25cm) 12 12.4" (31.5cm)</small>	<small>SN Satin Nickel BZ Antique Bronze</small>	<small>P Plug In (120-12V) transformer with 10 ft long cord</small>

PROJECT:

FIXTURE TYPE:

DATE:

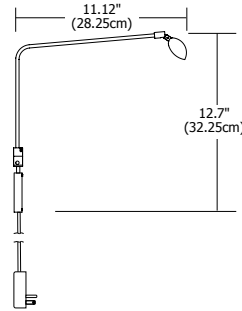
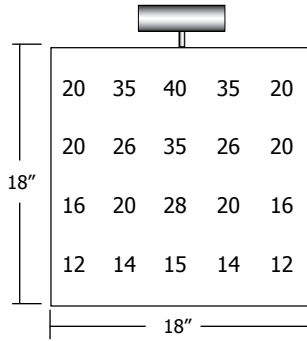
CODY 2 LED PICTURE LIGHT - 97+CRI



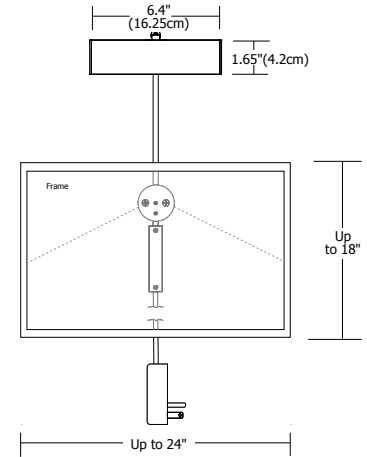
FOOTCANDLE CHARTS

No UV or IR
3000K to bring out the blues
High R9 to bring out the reds

CODY 6" provides uniform illumination to 18" square frames

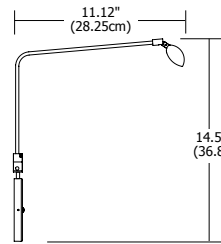
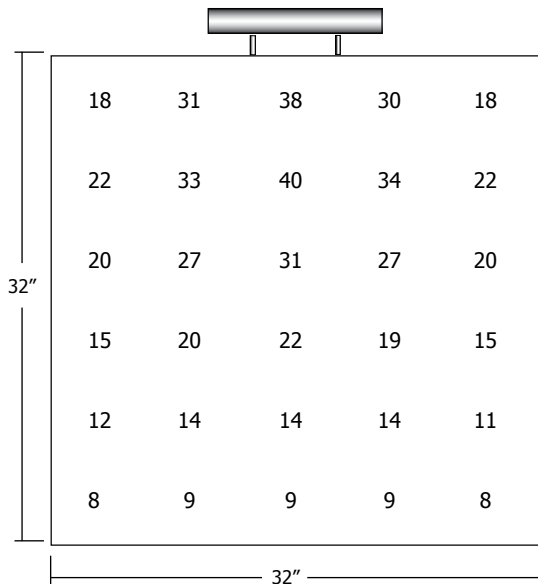


Cody 6" Plug In

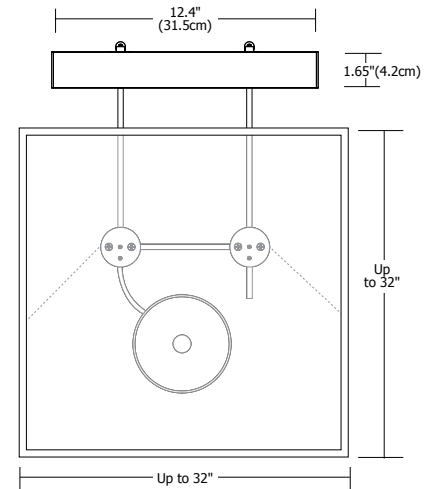


Cody 6" Plug In

CODY 12" provides uniform illumination to 32" square frames



Cody 12" Canopy



Cody 12" Canopy

PROJECT:

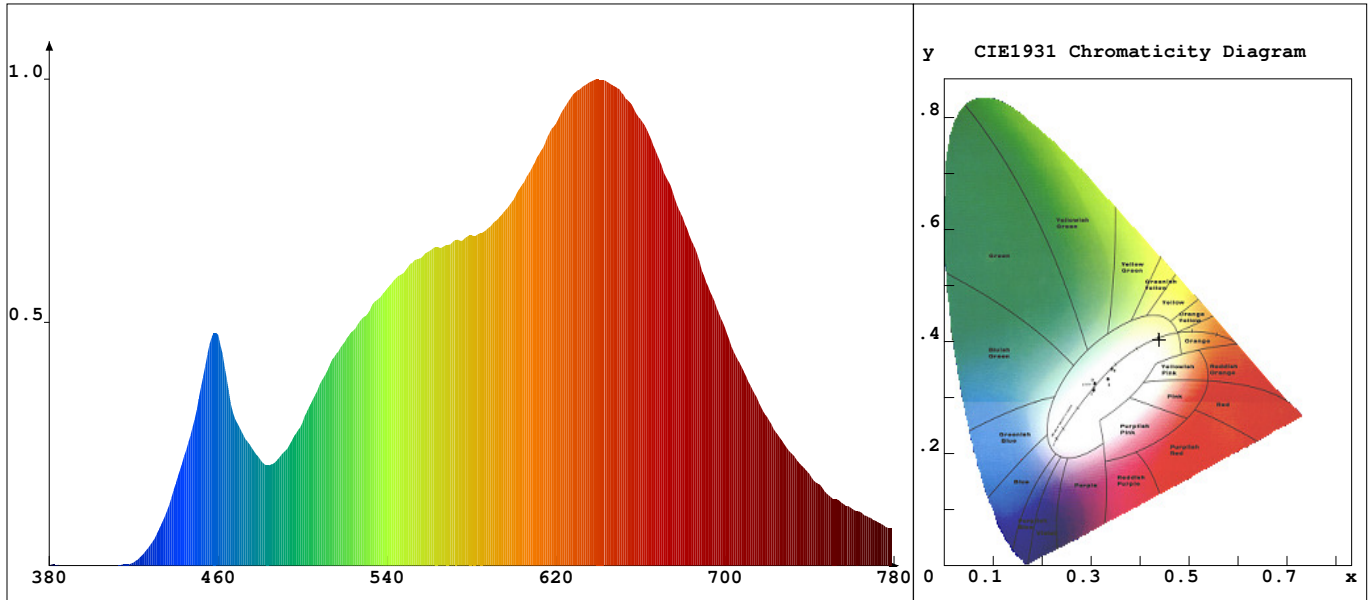
FIXTURE
TYPE:

DATE:

CODY 2 LED PICTURE LIGHT - 97+CRI

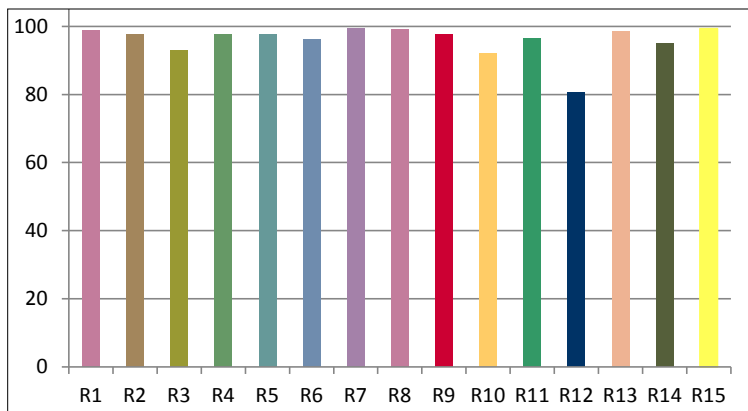
REV.08.28.14

CODY 2 LED PICTURE LIGHT WITH 6" SHADE



Rending Index: Ra= 97.5

R1 =98.8	R2 =97.7	R3 =93.1	R4 =97.8	R5 =97.7	R6 =96.2	R7 =99.6
R8 =99.2	R9 =97.6	R10=92.1	R11=96.5	R12=80.6	R13=98.6	R14=95.0
R15=99.3						



PROJECT:

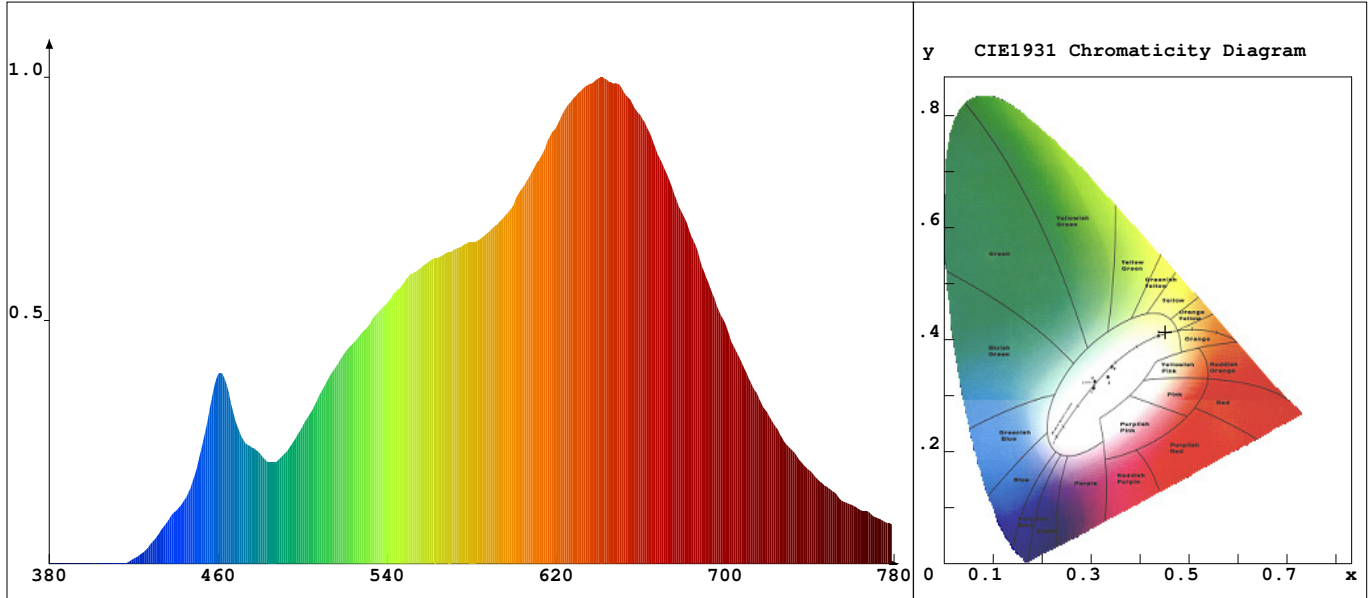
FIXTURE TYPE:

DATE:

CODY 2 LED PICTURE LIGHT - 97+CRI

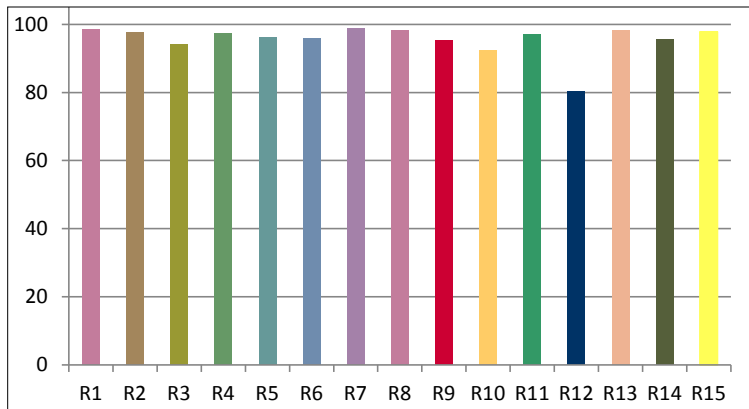
REV.08.28.14

CODY 2 LED PICTURE LIGHT WITH 12" SHADE



Rending Index: Ra= 97.1

R1 =98.6	R2 =97.8	R3 =94.2	R4 =97.5	R5 =96.4	R6 =95.8	R7 =98.8
R8 =98.3	R9 =95.2	R10=92.3	R11=97.2	R12=80.4	R13=98.2	R14=95.6
R15=97.8						



PROJECT:

FIXTURE TYPE:

DATE: