

UNITY 2 DMX GATEWAY

DMX IP INTERFACE

MADE IN AMERICA

REV 10.18.24



DESCRIPTION

The Unity 2 DMX Gateway Intelligent IP Interface offers versatile control over an extensive range of lighting and motor control devices through wired or optional wireless Ethernet connection. A “Unified Solution”, the Unity 2 DMX Gateway is a versatile platform that can handle a diverse array of lighting and motor control needs with a single unit, reducing the need for multiple controllers. Designed for plug-and-play operation, the Gateway simplifies the setup process and typically requires just one unit for most applications. Overall, the Unity 2 DMX Gateway is a robust and adaptable solution for comprehensive control and integration of lighting and motor systems, making it a go-to choice for a wide range of applications.

FEATURES

- DMX-512-A IP Interface
- Up to 32 DMX devices
- Translator between Platform and DMX Connected Devices
- Hosts Unique Device Profile Configuration with Store / Recall Presets
- IP Addressed & Configured. Firmware upgradeable
- Onboard web server with file sharing and auto discovery
- Supports bi-directional communication
- mDNS auto discovery & SDDP capable
- Wide Compatibility: The Gateway supports both CS-Bus™ connected devices and DALI-II encoders, accommodating DT8 compatible DALI-II fixtures.
- Major System Integration: Equipped with a complete set of device drivers for major lighting and automation systems, including Lutron, Crestron, Control4, NICE/ELAN, RTI, URC, and Vantage, the Unity Gateway ensures seamless integration across various platforms.
- Flexible Connectivity: The device offers both wired and optional wireless Ethernet control, allowing for adaptable installation and integration.

CONNECTIVITY

Ethernet, Wifi 802.11 a/b/g/n, TCP, UDP, TELNET Client, ARP, ICMP, DLC, WINS, WEB Server, HTTP. DNCP, NetBIOS, SNTPO, CGI and XML processor

POWER INPUT

- Built-In POE
- 12-24VDC Power Input
- LV004W – 24 – UNV

AMBIENT OPERATING TEMPERATURE

-20° C to 45° C

LIFETIME

50,000 hours

SPECIFICATIONS

- Input (A1G10): 12VDC-24VDC 200mA
- Power Supply (included): 120-240VAC 50/60Hz
- Input (A1G20): 12VDC-24VDC 200mA (Optional)
- POE Type 1 / Class 0
- Control: DMX-512A
- Channel Line up 512 Channel / Single Universe Ethernet Adapter
- Mounting: 35MM DIN RAIL (Enclosure / Rack or Wall)
- Standards: UL, CE, FCC (Class B), RoHS 2.4GHz WiFi
- 1 x 12vDC power supply unit (A1G10-DMX only)
- 1 x RJ45 120 Ohm network terminator
- 1 x 120 Ohm network resistor

INSTALLATION

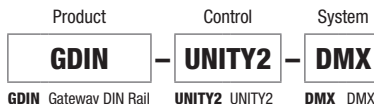
- The Unity 2 DMX Gateway is engineered for ease of use and adaptability, offering several features that enhance its functionality and integration.
- 32-Bit Processor: The built-in 32-bit processor simplifies the setup process and supports future upgrades, ensuring the device remains relevant and effective as technology evolves.
- Plug-and-Play Operation: Designed for straightforward installation, the Gateway supports plug-and-play functionality for quick deployment.
- Automatic Discovery: The Gateway is automatically discoverable through Windows File Explorer, making it easy to locate and configure.
- Dynamic IP Addressing: It features a built-in DHCP server that dynamically assigns an IP address, eliminating the need for manual configuration.
- Driver Availability: Free drivers are available for all popular control and automation systems, ensuring compatibility and easy integration regardless of the model.
- Advanced Auto-Discovery: Some advanced automation platforms can automatically discover all fixtures connected to the Gateway, further simplifying setup and management.
- These features collectively make the Unity with DMX Gateway a highly flexible and user-friendly solution for managing a wide range of lighting and motor control devices.

APPLICATIONS

Indoor, Dry locations only

COMPLIANCE

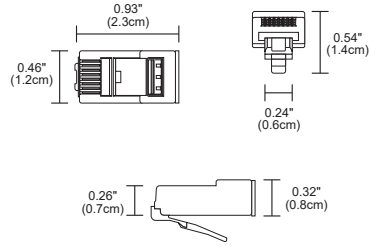
UL, Made in America



PROJECT		FIXTURE TYPE		DATE	
---------	--	--------------	--	------	--

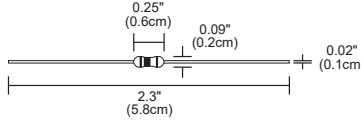
UNITY 2 DMX GATEWAY

DMX IP INTERFACE



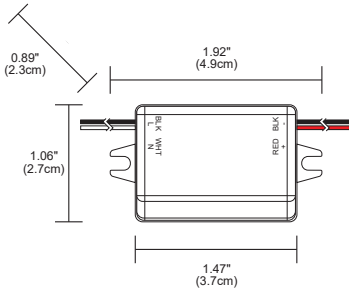
TERMINATOR RESISTOR FOR RJ45 CONNECTION (OPTIONAL)
 120ohmΩ resistor with RJ45 connection. Used to terminate the last device in the DMX chain.

Product	System
RJ45T	DMX
RJ45T RJ45 Terminator Resistor	DMX DMX



TERMINATOR RESISTOR WITH LEADS (OPTIONAL)
 120ohmΩ resistor with traditional hardwired leads. Used to terminate the last device in the DMX chain.

Product	System
RT	DMX
RT Resistor Terminator	DMX DMX

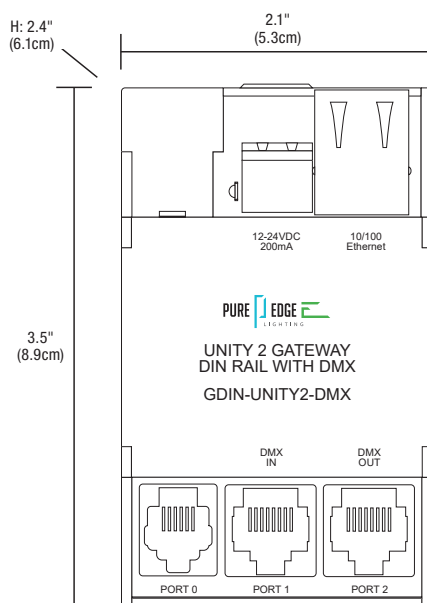


HARDWIRED POWER SUPPLY (OPTIONAL)
 Small and compact 120V-277VAC. 24VDC output. 4 Watt max. Optionally used with the PureEdge Gateway series. **This power supply is optional. The Gateways have POE functionality and/or any 12V/24VDC power supply will work.**

Product	Voltage	Type
LV004W	24	UNV
LV004W Power Supply	24 24Volt DC output, 4 watt max	UNV 120V-277V Input

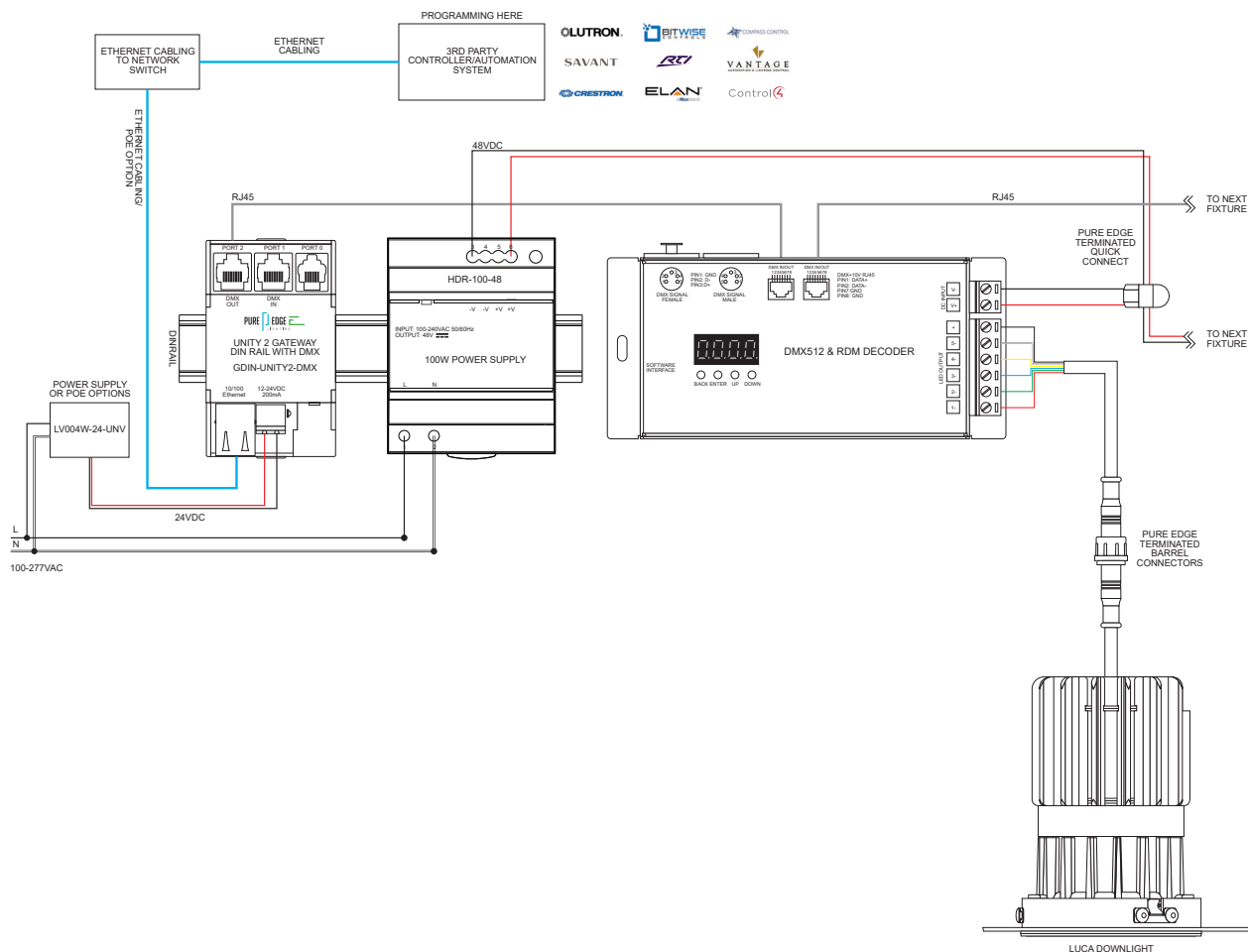
PROJECT		FIXTURE TYPE		DATE	
---------	--	--------------	--	------	--

OVERVIEW: Unity 2 Dimensions



NETWORK TOPOLOGY & WIRING DIAGRAMS

Luca TruColor™ with DIN Rail Power Supply



PROJECT	FIXTURE TYPE	DATE
---------	--------------	------

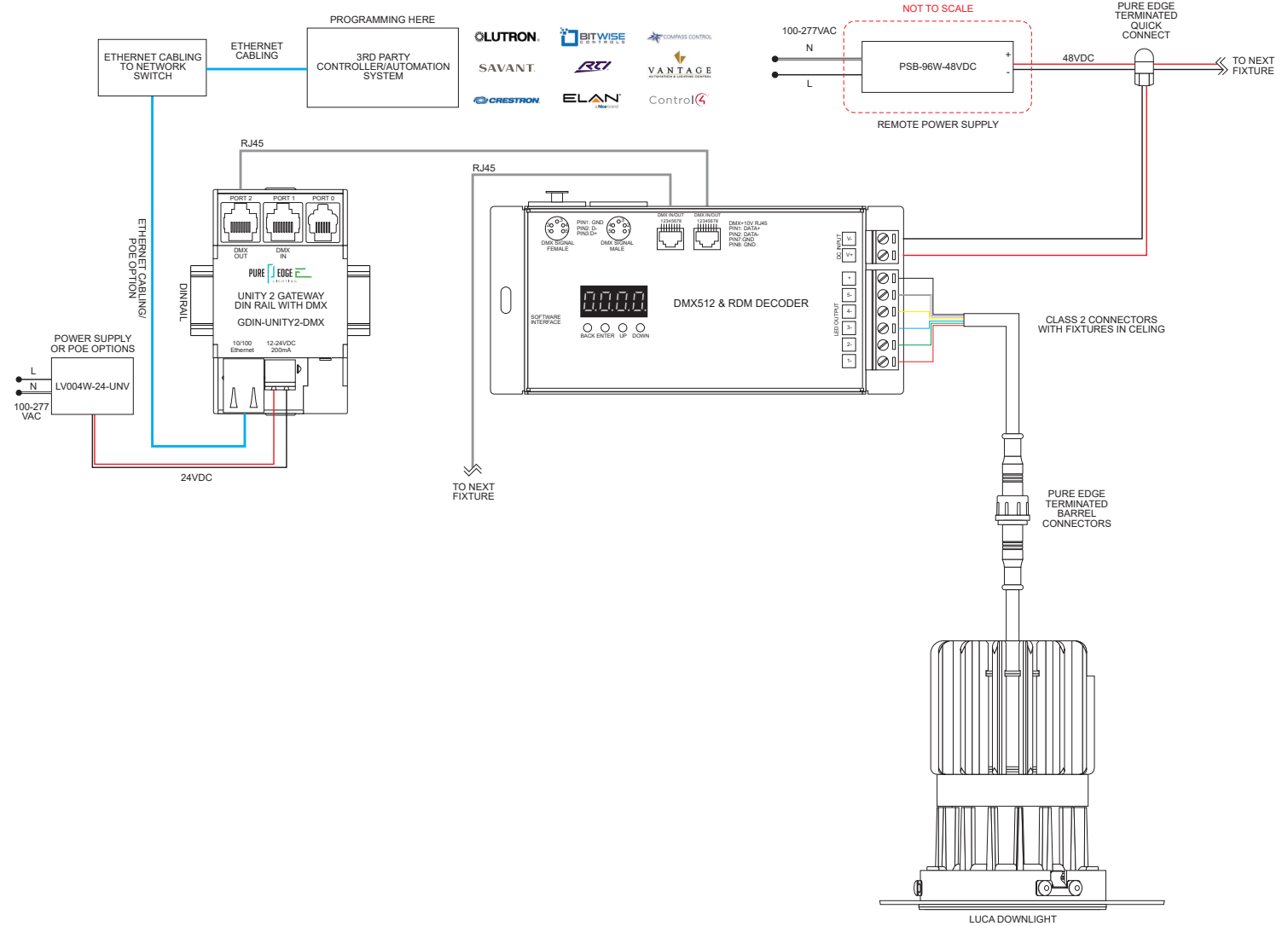
UNITY 2 DMX GATEWAY

DMX IP INTERFACE

NETWORK TOPOLOGY & WIRING DIAGRAMS

REV 10.18.24

Luca TruColor™ with Remote Located Power Supply



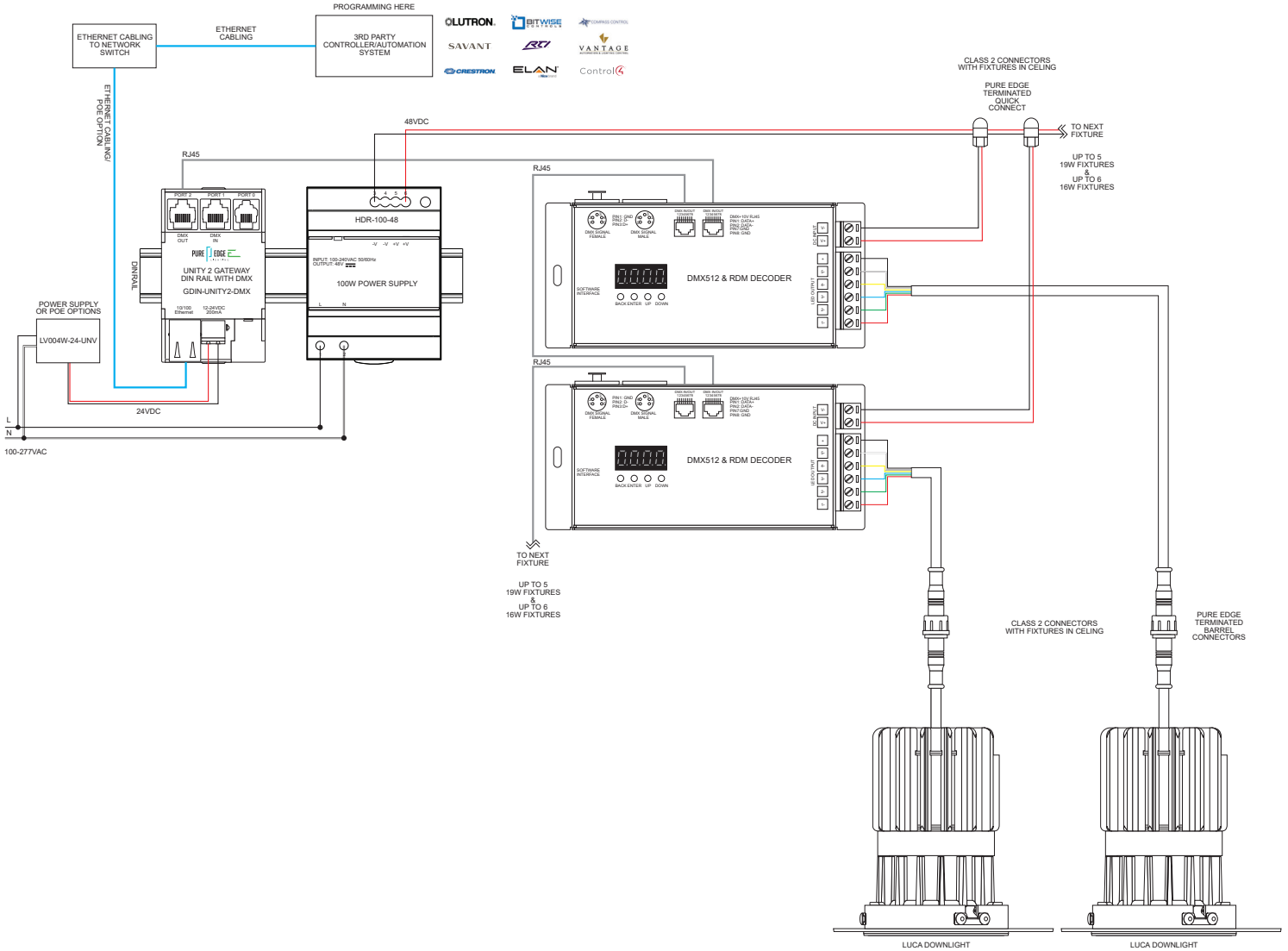
PROJECT		FIXTURE TYPE		DATE	
---------	--	--------------	--	------	--

UNITY 2 DMX GATEWAY DMX IP INTERFACE

NETWORK TOPOLOGY & WIRING DIAGRAMS

REV 10.18.24

Multiple Luca TruColor™ with DIN Rail Power Supply



PROJECT	FIXTURE TYPE	DATE
---------	--------------	------

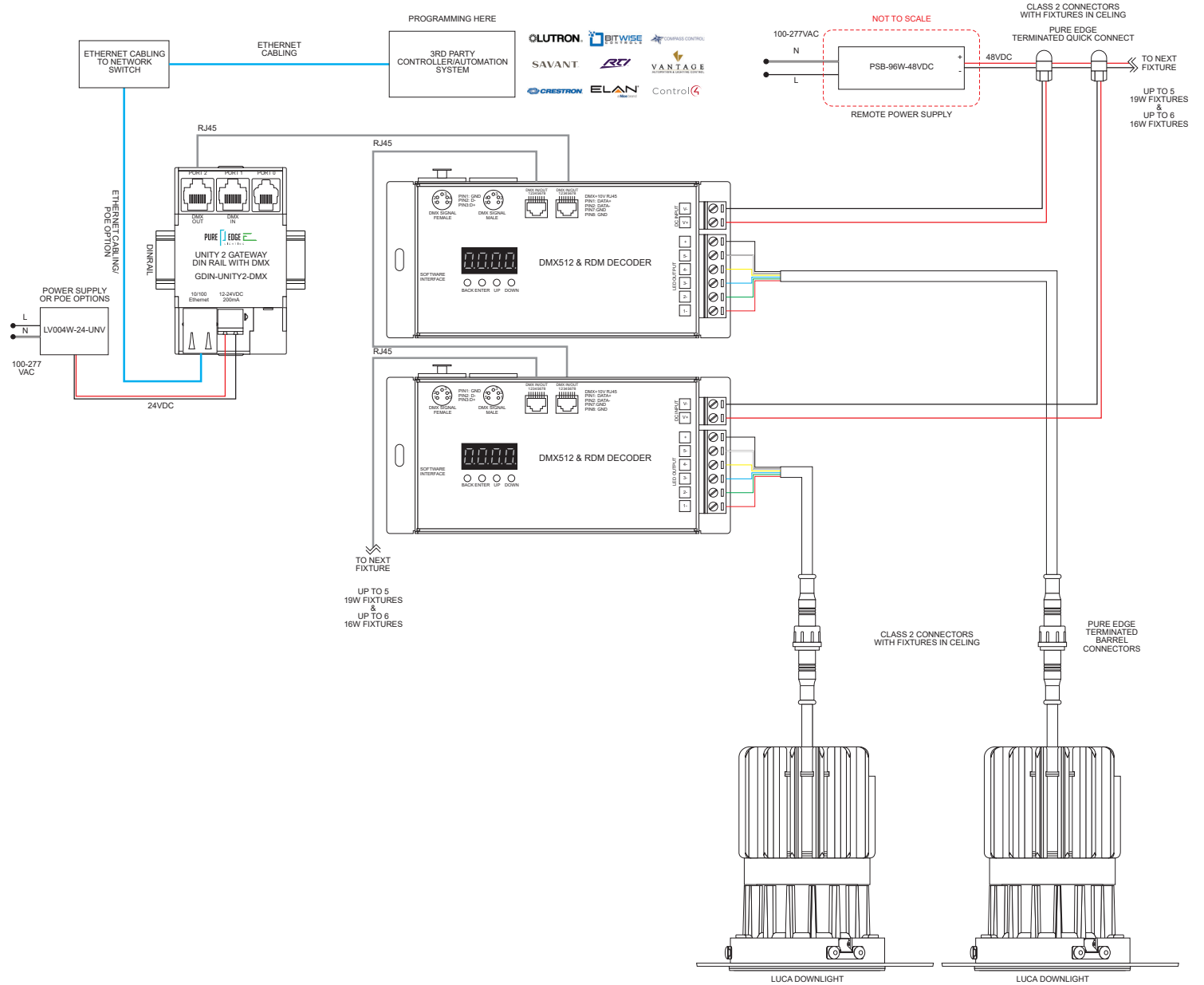
UNITY 2 DMX GATEWAY

DMX IP INTERFACE

NETWORK TOPOLOGY & WIRING DIAGRAMS

REV 10.18.24

Multiple Luca TruColor™ with Remote Located Power Supply



PROJECT	FIXTURE TYPE	DATE
---------	--------------	------