

# AETHER 2"

## 2" Extreme Shallow LED Remodel Housing

WAC



Fixture Type:

Catalog Number:

Project:

Location:

### PRODUCT DESCRIPTION

Aether is a next-level downlight, with an extreme-low profile that is designed to fit in tight plenum spaces without compromising lumen output or glare control. Choose from round or square in an array of finishes. With features such as vertical and horizontal adjustment. Aether is suitable for a wide range of applications including residential, commercial, hospitality and architectural.

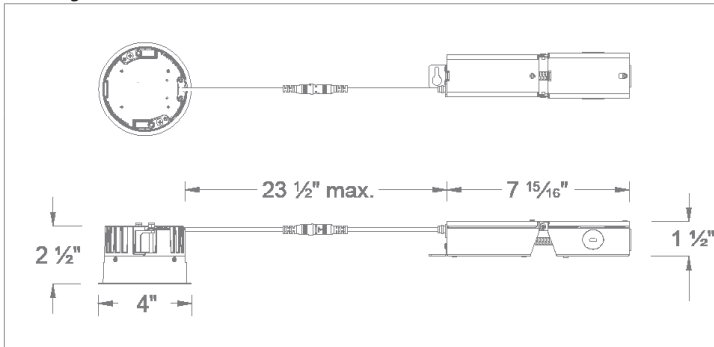
### FEATURES

- IC rated extreme shallow plenum family
- Universal input voltage (120V-220V-277V)
- Downlight, Adjustable and Wall Wash Trims available
- Compatible with all trimmed elements (see page 2)
- 5 year WAC Lighting product warranty

### SPECIFICATIONS

<b>Construction:</b>	Powder coated die-cast aluminum
<b>Dimming:</b>	100% - 5% with 0-10V 100% - 5% with Electronic Low Voltage (ELV)/ TRIAC
<b>Input:</b>	120V-277V AC
<b>Power:</b>	9W, 15W
<b>Mounting:</b>	Retention clips firmly hold trim to housing
<b>Cutout:</b>	3" - 3/4"
<b>Finish:</b>	Powder Coated Black
<b>Ceiling thickness</b>	1/2" - 1"
<b>Standards:</b>	UL & cUL Listed, IC Rated Airtight, Title 24 JA8 Compliant

### Housing



### Model

<b>HR-2LED-R10A</b>	Remodel (9W) IC Rated, Airtight
<b>HR-2LED-R15A</b>	Remodel (15W) Non-IC Rated, Airtight

### HR-2LED-R1

Example: **HR-2LED-R15A**

wacighting.com

Phone (800) 526.2588

Fax (800) 526.2585

Headquarters, East Manufacturing Facility

44 Harbor Park Drive

Port Washington, NY 11050

South East Manufacturing Facility

1600 Distribution Ct

Lithia Springs, GA 30122

Central Manufacturing Facility

1700 South J Elmer Freeway, Ste 100

Cedar Hill, TX 75104

West Manufacturing Facility









1750 S Archibald Ave

Ontario, CA 91761

# AETHER 2"

## 2" Extreme Shallow LED Remodel Housing

WAC

Trim (Order Housing Separately)	Model	Beam	Color Temp	Finish
	<b>R2ARDT</b> Round, Downlight Lensed, Wet Location	S N F W	827	BK BKWT HZWT WT
	<b>R2ASDT</b> Square, Downlight Lensed, Wet Location		830	
			835	
			840	
			927	
			930	
	<b>R2ARAT</b> Round, 0-30° Adjustable Damp Location	N F	827	BK BKWT HZWT WT
	<b>R2ASAT</b> Square, 0-30° Adjustable Damp Location		830	
			835	
			840	
			927	
			930	
	<b>R2ARAT</b> Round, 0-25° Adjustable Lensed, Wet Location	N F	827	LBK LBKWT LHZWT LWT
	<b>R2ASAT</b> Square, 0-25° Adjustable Lensed, Wet Location		830	
			835	
			840	
			927	
			930	
	<b>R2ARWT</b> Round, Wall Wash Lensed, Wet Location	A	827	BK BKWT HZWT WT
	<b>R2ASWT</b> Square, Wall Wash Lensed, Wet Location		830	
			835	
			840	
			927	
			930	

**R2A** - - -  
Example: **R2ARWT-A930-WT**

wacighting.com  
Phone (800) 526.2588  
Fax (800) 526.2585

Headquarters, East Manufacturing Facility  
44 Harbor Park Drive  
Port Washington, NY 11050

South East Manufacturing Facility  
1600 Distribution Ct  
Lithia Springs, GA 30122

Central Manufacturing Facility  
1700 South J Elmer Freeway, Ste 100  
Cedar Hill, TX 75104

West Manufacturing Facility  
1750 S Archibald Ave  
Ontario, CA 91761