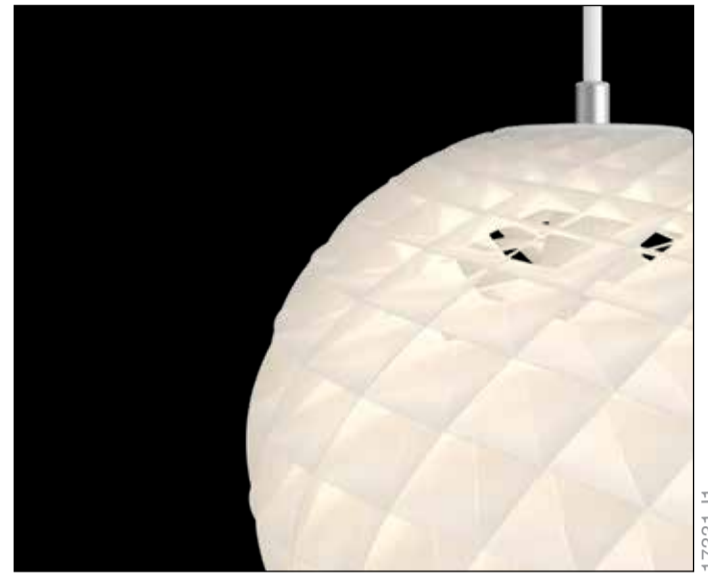
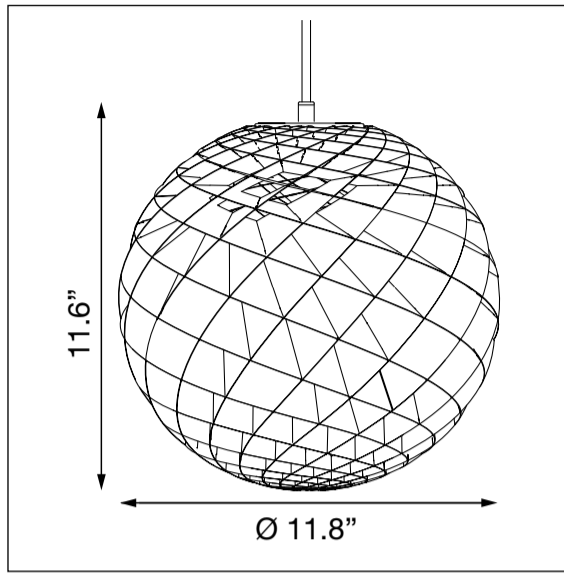




Patera 300

Design Øivind Slaatto



17331-IT

Light source	Max. size: Diameter: 2"	Voltage	Weight	Ingress protection
Max 40W E26/Medium Type A 19 Bulb	Max Diameter: 2"  	120V / 50-60Hz	Max. 0,8 kg / 1.8 Lbs	IP 20 / Dry location

Recommended cleaning substances:

Wipe off dust with a dry, soft cloth. Remove greasy spots etc. with a soft cloth dampened in lukewarm water (<122° F/ 50° C) with a mild detergent. Use a thin brush through the openings or use oil free compressed air to remove dust from the lamellae.

Warning: Scouring powder and similar substances will scratch surfaces.

All installation is subject to local code and jurisdiction.


The installer must ensure that the ceiling can support the luminaire's weight. The installer must if necessary reinforce the ceiling structure by adequate means.



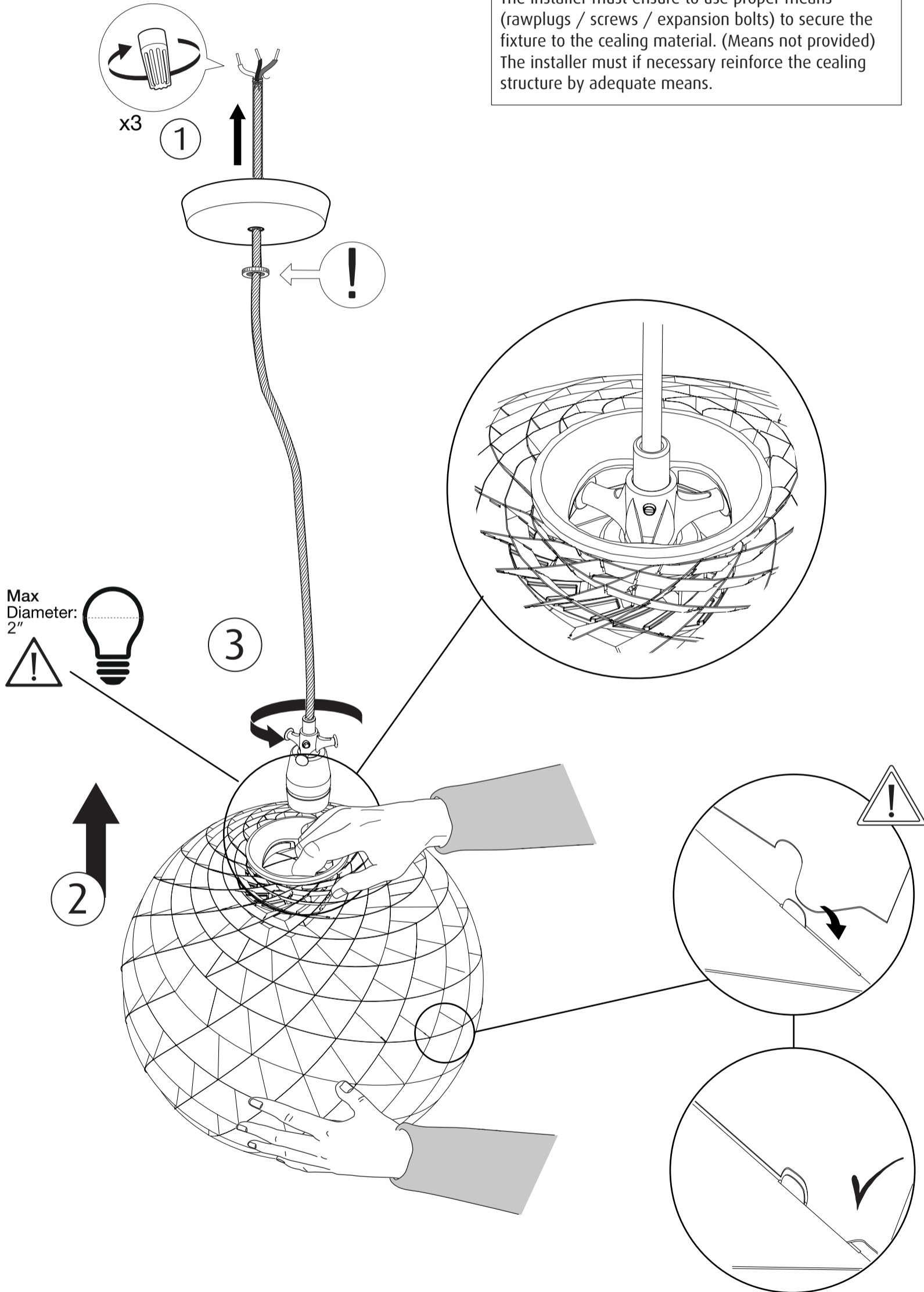
Louis Poulsen A/S disclaims any liability if a half mirror light bulb is used. This type of light source reflects the heat and may damage/melt parts of the fixture.



Connect wires:
White to Neutral
Black to Line
Green to Ground

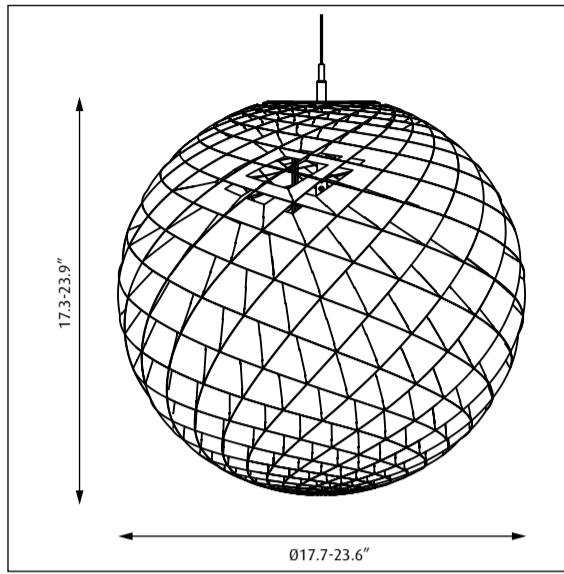
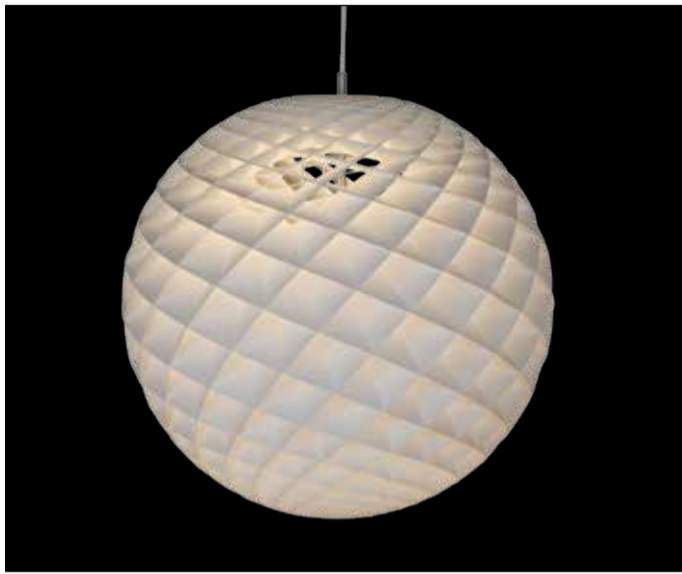
 See further mounting instructions in the manual supplied with the canopy

The installer must ensure to use proper means (rawplugs / screws / expansion bolts) to secure the fixture to the ceiling material. (Means not provided)
The installer must if necessary reinforce the ceiling structure by adequate means.




Patera 17.7" & 23.6"

Design Øivind Slaatto



16404-11

Light source	Voltage	Weight	Electric shock protection	Ingress protection
17.7": 1/100W/INC/E26 	120V	Max 4.4 Lbs	Cl. I	IP 20
23.6": 1/200W/INC/E26		Max 6.6 Lbs		

Recommended cleaning substances:

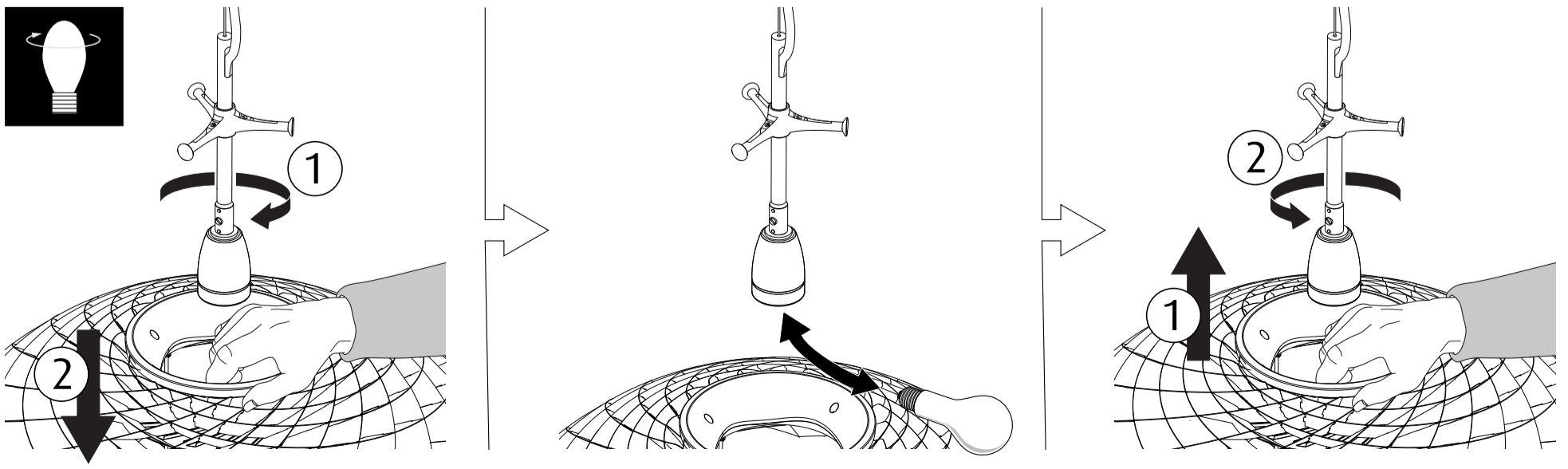
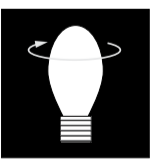
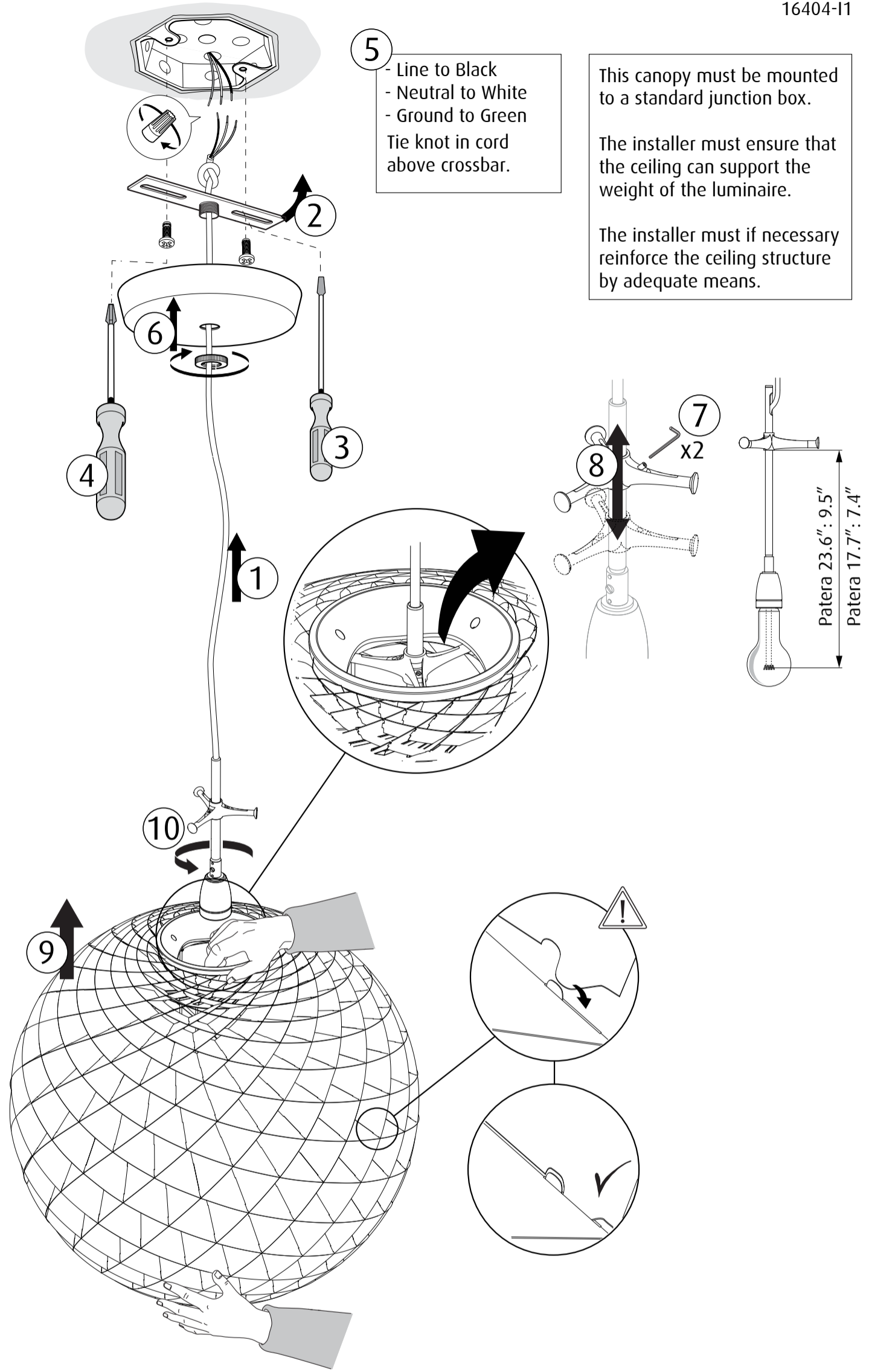
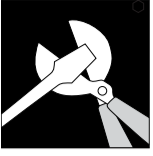
Wipe off dust with a dry, soft cloth. Remove greasy spots etc. with a soft cloth dampened in lukewarm water (<122° F/ 50° C) with a mild detergent.
Use a thin brush through the openings or use compressed air to remove dust from the lamellae.

Warning: Scouring powder and similar substances will scratch surfaces.

All installation is subject to local code and jurisdiction. Consult a qualified electrician to ensure correct branch circuit conductor.
The installer must ensure that the ceiling can support the luminaire's weight. The installer must if necessary reinforce the ceiling structure by adequate means.

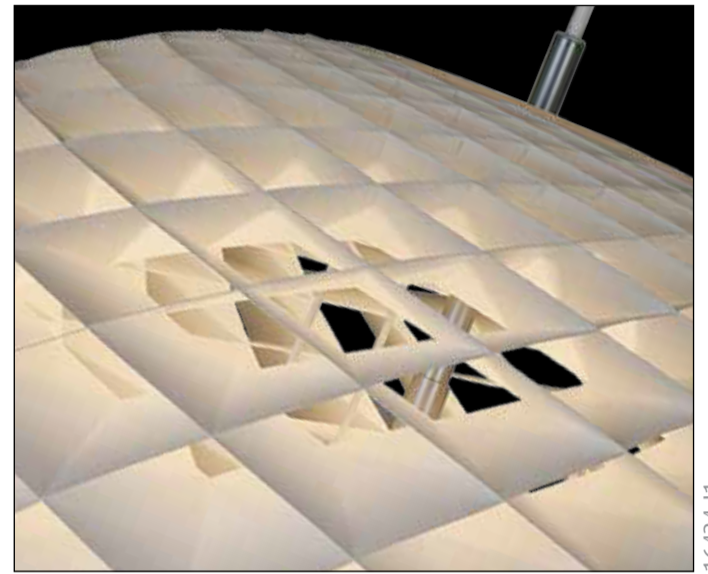
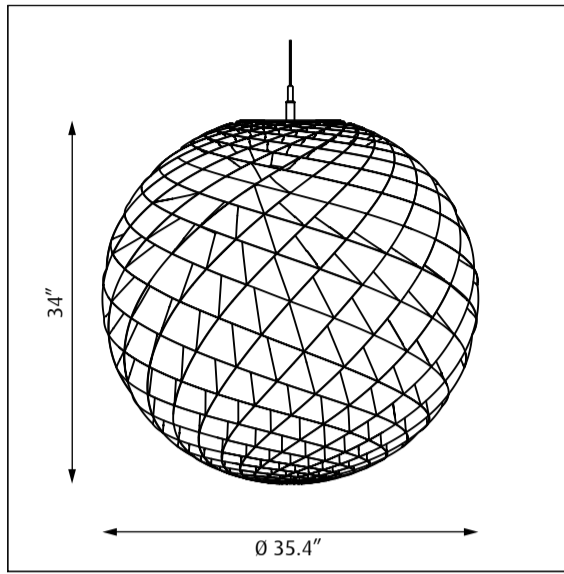
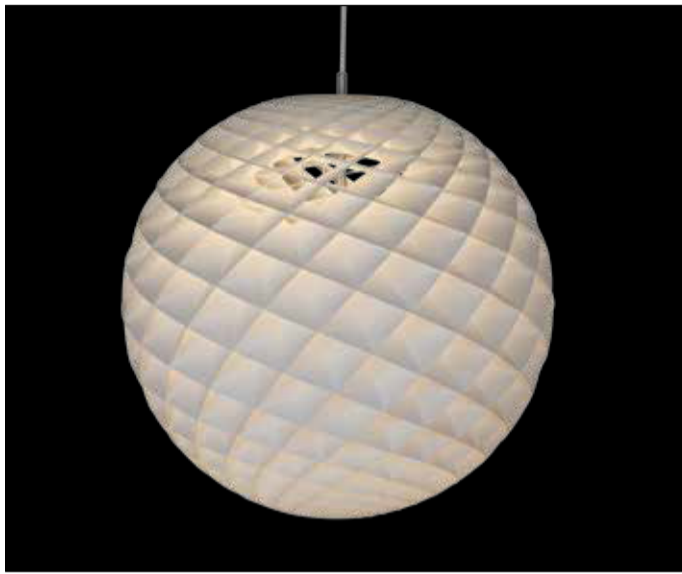


Louis Poulsen A/S disclaims any liability if a half mirror light bulb is used. This type of light source reflects the heat and may damage/melt parts of the fixture.




Patera 35.4"

Design Øivind Slaatto



16424-11

Light source	Voltage	Weight	Electric shock protection	Ingress protection
Max 1/200W/INC/E26 	120V	17.6 Lbs	Cl. I	IP20

Recommended cleaning substances:

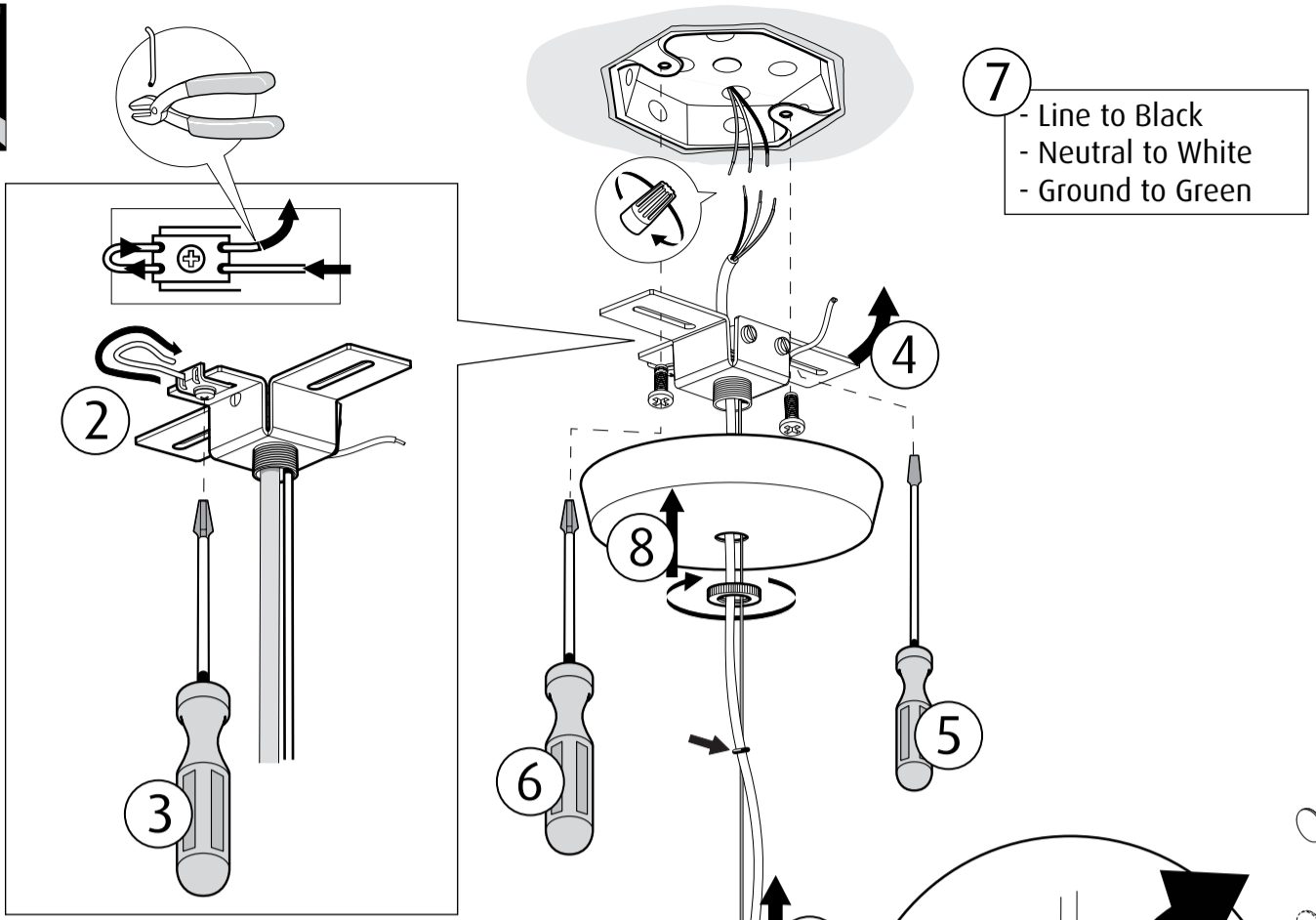
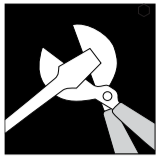
Wipe off dust with a dry, soft cloth. Remove greasy spots etc. with a soft cloth dampened in lukewarm water (<122° F/ 50° C) with a mild detergent.
Use a thin brush through the openings or use compressed air to remove dust from the lamellae.

Warning: Scouring powder and similar substances will scratch surfaces.
Consult a qualified electrician to ensure correct branch circuit conductor.
All installation is subject to local code and jurisdiction.

The installer must ensure that the ceiling can support the luminaire's weight. The installer must if necessary reinforce the ceiling structure by adequate means.



Louis Poulsen A/S disclaims any liability if a half mirror light bulb is used. This type of light source reflects the heat and may damage/melt parts of the fixture.

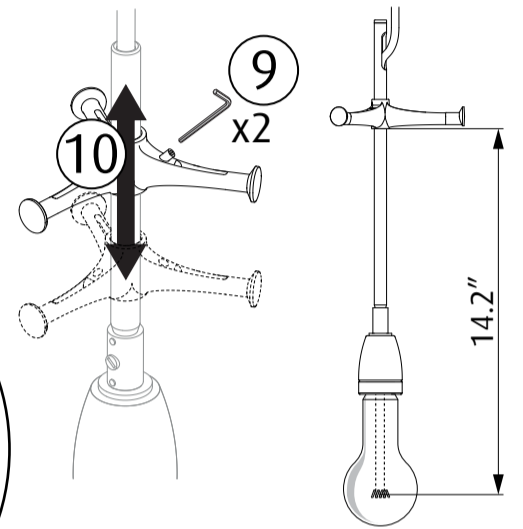


- 7
- Line to Black
 - Neutral to White
 - Ground to Green

This canopy must be mounted to a standard junction box.

The installer must ensure that the ceiling can support the weight of the luminaire.

The installer must if necessary reinforce the ceiling structure by adequate means.



Adjust the position of the rubber rings.

The installer must ensure that the weight of the luminaire, is carried by the steel cable, NOT the luminaire power supply cord.

