

MICHAELANASTASSIADES

INSTALLATION INSTRUCTIONS



BRASS ARCHITECTURAL COLLECTION
CUP, WALL MOUNTED, 2023

PRODUCT SPECIFICATIONS

Bulb specifications: 120V / 240V
Integrated LED 7.8W
120V / 240V dimmable LED 1-10V

Product weight: 1kg

120V version supplied with paintable
junction box cover.

IP 20: Indoor Use Only
(suitable for bathroom Zone 3)

BEFORE INSTALLING

Please keep these instructions for future reference. Please read instructions in full prior to installation noting all illustrations. Instructions should be followed precisely.

If in any doubt about electrical safety, contact a qualified electrician.

Installation should always be carried out by a qualified electrician or a competent person in accordance with your current electrical regulation.

The electricity supply should always be isolated at its source (fuse box) before attempting any installation or maintenance. Please do not fit bulbs exceeding the maximum allowable wattage.

Ensure the circuit, to which the fixture is to be connected, has been installed and fused in accordance with your local electrical standards.

If the external flexible cable or cord is damaged, it should be replaced exclusively by MICHAEL ANASTASSIADES or a similar qualified person to avoid a hazard.

Please see the latest IEE Wiring Regulations for full details.

If a bulb requires replacement, always switch off the mains power and allow the fixture to cool.

Position the fixture where desired, ensuring that the area is suitable to support the weight of the fixture.

Determine the fixing method appropriate to the surface material.

Modifying any part of the fixture will void the products warranty.

MICHAEL ANASTASSIADES takes no responsibility for incorrectly installed lights & recommends that all fixtures should be installed by a qualified electrician.

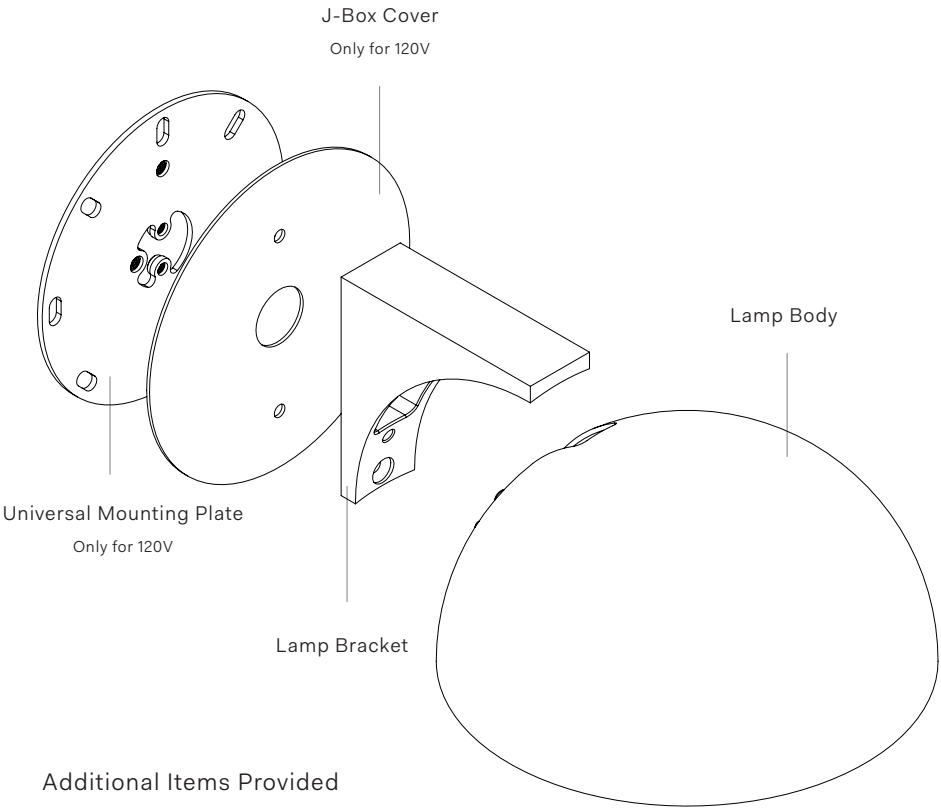
CLEANING INSTRUCTIONS

Before cleaning, lighting fixtures must be turned off and unplugged from mains electricity. Whilst cleaning please take care and use the gloves provided.

Polished brass: As the item is unlacquered it will naturally oxidise and darken. Upon touching the items without gloves, fingerprints are likely to occur and leave marks. Use a good quality brass cleaning liquid and follow the product instructions using the extra soft dust cloth. Do not apply pressure on persistent marks.

Remove them using repeated gentle motions and by reapplying the brass cleaning liquid.

Parts Supplied

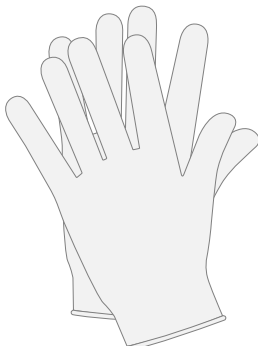


Additional Items Provided

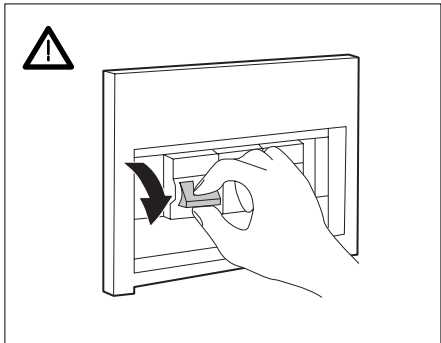
- Pair of Gloves
- Allen key 3mm

INSTALLATION PREPARATION

Whilst installing the fixture, please take care and use the gloves provided.



Turn off the electrical supply at the fuse box.



Use the guide below to ensure you follow the instructions that are relevant to your fixture.

Cup Wall Mounted, 240V	Fig.1	Fig.2	Fig.3	Fig.9	Fig.10	Fig.11		
Cup Wall Mounted, 120V	Fig.4	Fig.5	Fig.6	Fig.7	Fig.8	Fig.9	Fig.10	Fig.11

Fig.1 For 240V Fittings

Mark fixing holes (A) by placing the Lamp Bracket (B) over electrical mains.

Please ensure the drill holes are not aligned with the route of the cables in the wall prior to drilling.

Drill at the location of the markers so that they holes are large enough to accomodate the wall anchors.

Insert wall anchors (D) into place.

Center the Lamp Bracket over the cables to pull them through the center slot.

Bring the Lamp Bracket (B) up to the wall anchors and use the screws (C) to secure into place.

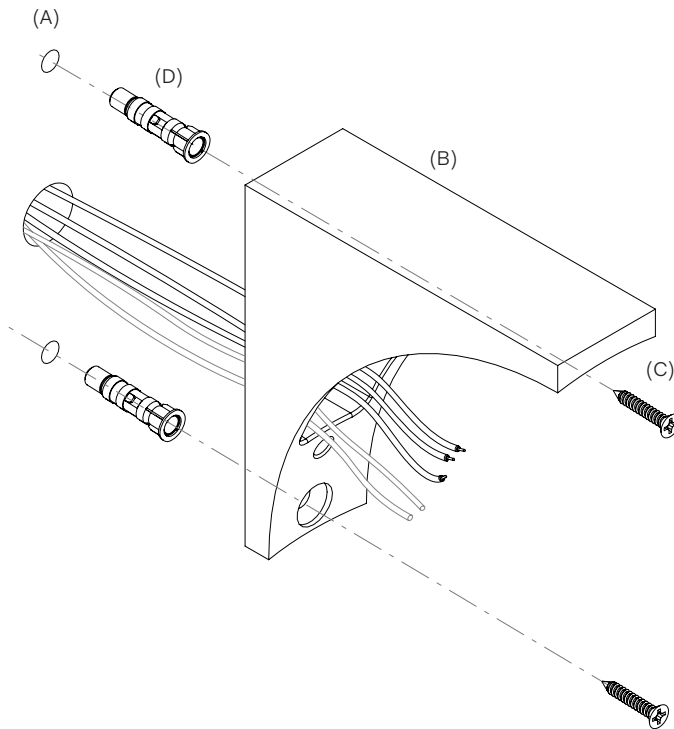


Fig.2 For 240V Fittings

Unscrew the Diffuser (G) from the Lamp Body (H).

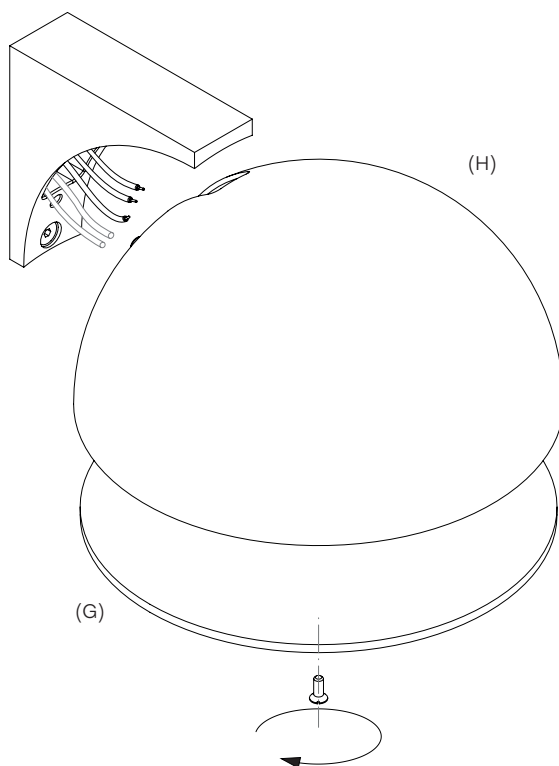


Fig.3 For 240V Fittings

Connect the wires of the Lamp Body (H) with the mains and dimming wires
Gently push the connectors inside the Lamp Body.

Go to Fig. 9 for next step.

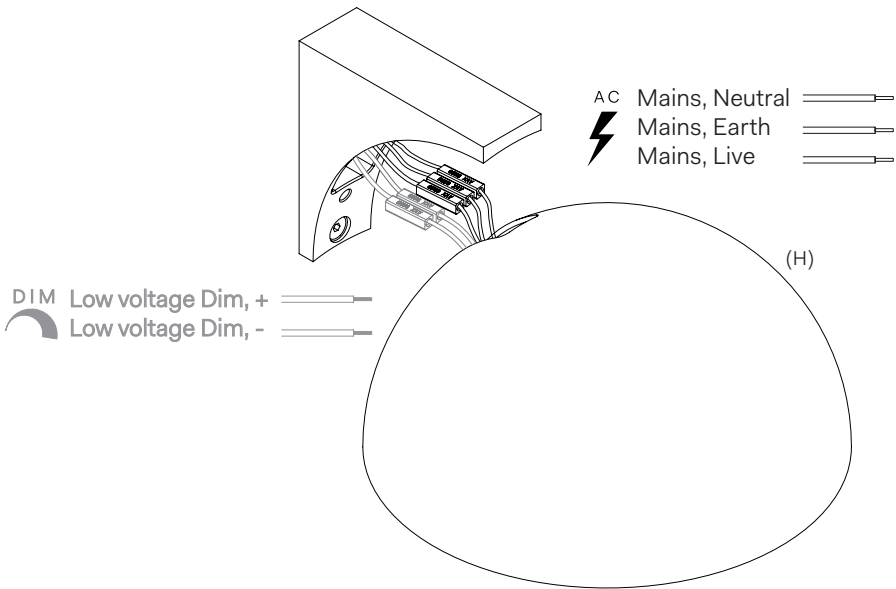


Fig.4 For 120V Fittings

Put the drivers inside the Junction box and connect the electrical mains Live and Neutral wires to the input wires of the driver.

Feed the driver output wires through the center of the Universal Mounting Plate (E). Screw the Universal Mounting Plate to the Junction Box.

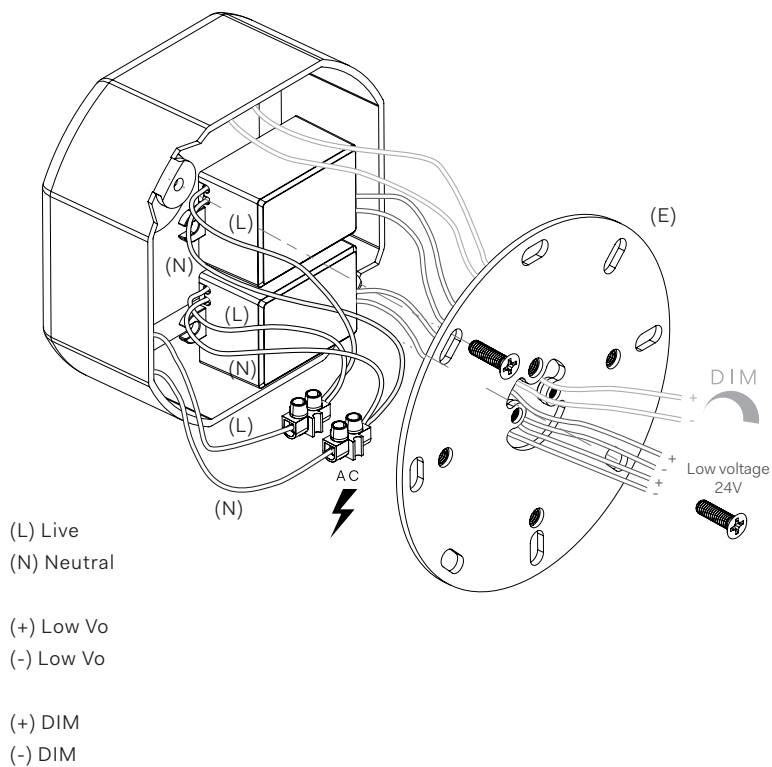
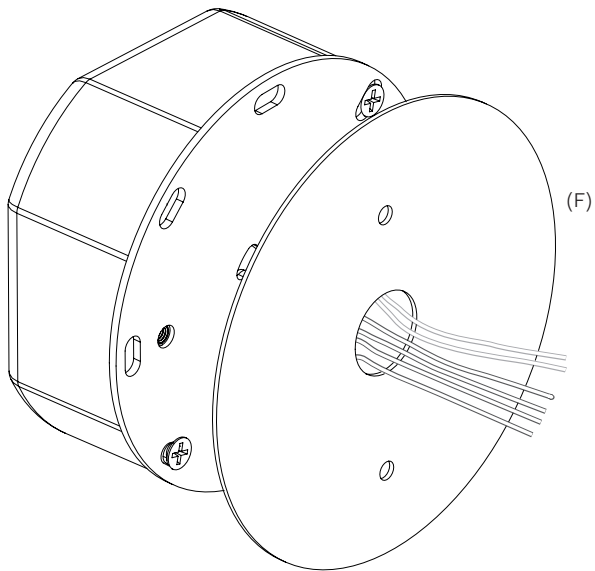


Fig.5 For 120V Fittings

Feed the wiress through the central hole of the Junction Box Cover (F).



Paint over the J-box cover to match the wall finish.

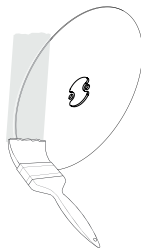


Fig.6 For 120V Fittings

Pull the wires through the center of the Junction Box Cover (F) and the Lamp Bracket (B).
Secure the Lamp Bracket to the Junction Box Cover using the screws.

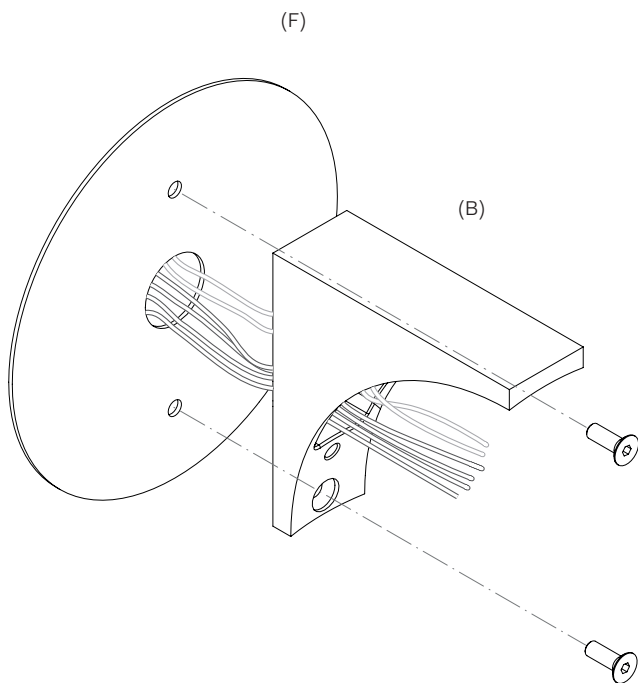


Fig.7 For 120V Fittings

Unscrew the Diffuser (G) from the Lamp Body (H).

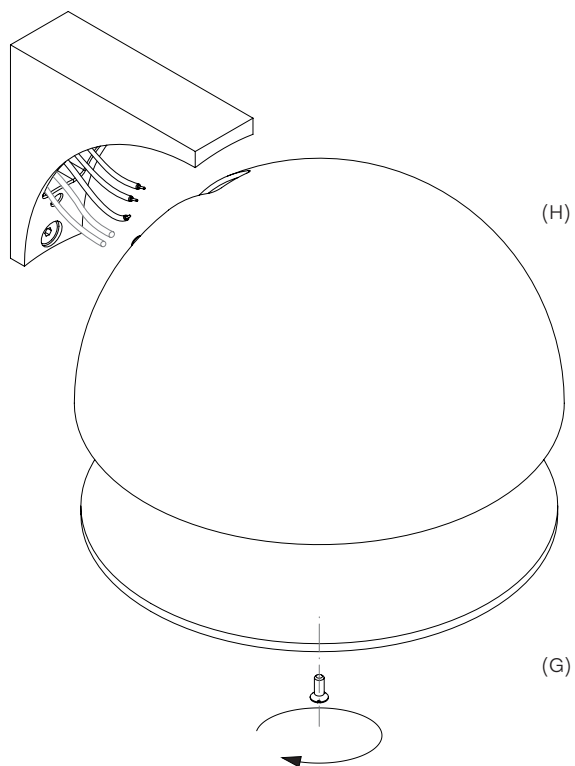


Fig.8 For 120V Fittings

Connect the wires of the Lamp Body (G) with the low voltage driver output and dimming wires using the connectors provided.
Gently push the connections inside the Lamp Body (H).

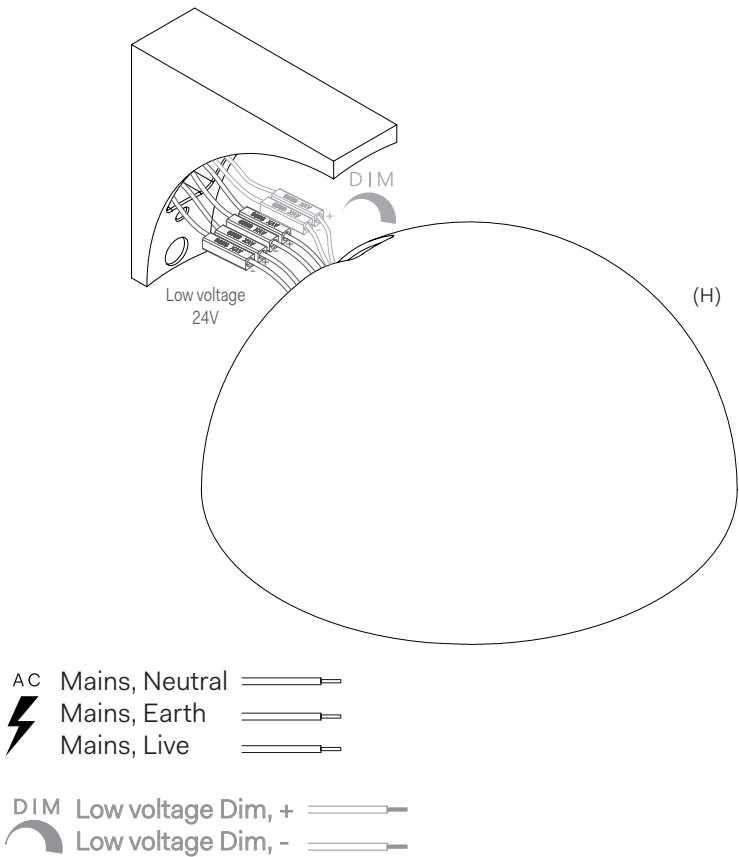


Fig. 9

Screw the Lamp Body (H) to the Lamp Bracket (B).

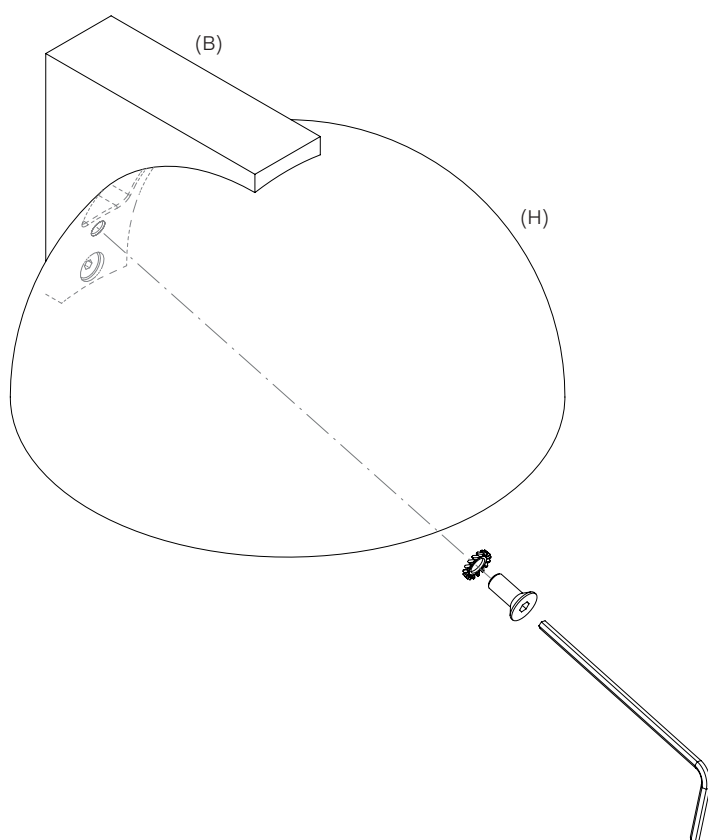


Fig.10

Screw the Diffuser (G) to Lamp Body (H).

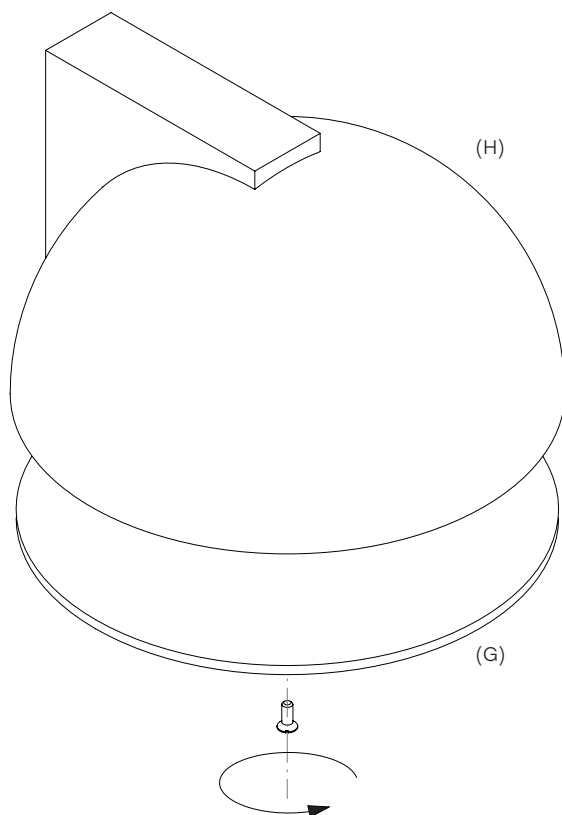
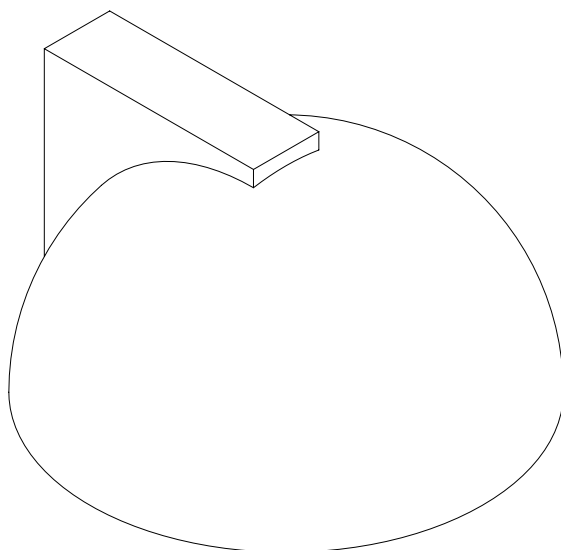


Fig.11

Your fixture is now complete.



Michael Anastassiades' design philosophy is to preserve the inherent qualities of given material. All of our products are handmade and come in natural finishes, exposed to the elements without any protective lacquers. We look at oxidation as part of a process that adds to the patina of an object, increasing beauty with time. We try our best for all goods to leave our premises in pristine condition, but sometimes products may arrive with minor oxidation marks.

Whilst every effort is made to ensure accurate representation of product colours, finishes and dimensions, Michael Anastassiades Ltd reserves the right to alter these details without notice, in compliance with its own production needs, technological changes or in response to the current market needs. Colour swatches are for reference only; Michael Anastassiades Ltd cannot guarantee exact colour match for any product finishes.

All designs are protected under copyright law. Michael Anastassiades holds the exclusive manufacturing and distribution rights worldwide. Copying will be prosecuted.

All light fixtures in this catalogue have CE marking compliance.

Michael Anastassiades Ltd.
50 Rochester Place, London NW1 9JX
T +44 (0)20 7928 7527
sales@michaelanastassiades.com
www.michaelanastassiades.com
© 2024 Michael Anastassiades Ltd. All rights reserved.