

ELEMENT™ MULTIPLES

1 X 2 TRIMMED

ELEMENT Multiples feature a unique patented LED spot dome module enabling remarkable tool-free adjustment and locking while maintaining center beam through the aperture at all tilt and rotation angles. All trims are made of cold rolled steel for excellent durability and are available in several finishes, ceiling appearance and aperture configurations to accommodate virtually any aesthetic. Flangeless housings include extruded and precision welded aluminum plaster plates. Trim inserts to create overlap flange to conceal ceiling cut-out. Also available in 1x1, 1x3, 1x4 and 2x2 configurations.

- Patented LED spot dome module enables remarkable tool-free adjustment and locking
- Housing constructed of heavy gauge cold rolled steel with durable black powder coat finish
- Low profile design for use in standard 2x6 construction
- Includes integrated junction box approved for branch circuit through wiring
- Housing includes individual driver for each module (I.E. 2 drivers in a 1x2)

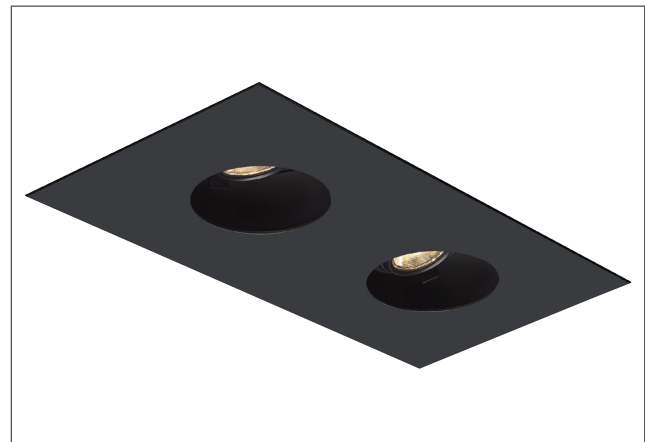
SPECIFICATIONS

| | HIGH OUTPUT (80CRI/3000K) | LOW OUTPUT (80CRI/3000K) |
|---------------------|--|-----------------------------|
| LUMENS (40°) | 1600 | 1256 |
| WATTS | 17 per module | 12 per module |
| EFFICACY | 94 l/w | 104 l/w |
| CRI | 80+ or 90+ | |
| CCT OPTIONS | 2700K, 3000K or 3500K | |
| COLOR CONSISTENCY | 2-Step | |
| CBCP | 20° - 4973 | |
| | 30° - 3296 | |
| | 40° - 3396 | |
| | 60° - 1700 | |
| VOLTAGE | 120V or 277V | |
| DIMMING* | Standard phase dimming (Down to <1%)* 0-10V (Down to 5%) | |
| OPTICS | 20°, 30°, 40°, 60° (field-changeable) Accepts 2 lenses, ordered separately | |
| ADJUSTABILITY | 35° tilt and 360° rotation with tool-free locking | |
| CEILING APPEARANCE | Flanged or Flangeless (Accommodates up to 2" ceiling thickness) | |
| CEILING APERTURE | 5" x 5" ceiling cut-out per module | |
| HOUSING | IC Airtight (Low Output Only), Non-IC Airtight, Chicago Plenum. IC suitable for insulation rating up to R60. | |
| SIZE | 1x2 | |
| POWER SUPPLY | Constant Current driver with +.9 power factor and +80% efficiency | |
| GENERAL LISTING | ETL listed. Damp listed. | |
| CALIFORNIA TITLE 24 | Registered CEC Appliance Database. Can be used to comply with CEC 2016 Title 24 Part 6 for 90 CRI versions. | |
| CONSTRUCTION | Heavy gauge cold rolled steel | |
| FINISH | Black or White powder coat | |
| LED LIFETIME | L70; 50,000 hours | |
| WARRANTY** | 5 years | |

*See ELEMENT-lighting.com for dimmer compatibility.

**Visit ELEMENT-lighting.com for specific warranty limitations and details.

Adjustable spot accepts up to two optical lenses. Trims, Light Modules, and Housings sold separately. Only accepts adjustable spot.



shown in flanged round black

ORDERING NOTE:

Order housings, modules, and trims (if applicable) separately. Must order corresponding number of modules based on housing size (e.g. 3 modules for a 1x3 housing, 4 modules for a 2x2 housing).

ELEMENT™ MULTIPLES

1 X 2 TRIMMED

GRIDS

HOUSING

| ELEMENT MULTIPLES | SIZE | CEILING APPEARANCE | OUTPUT | HOUSING TYPE | VOLTAGE | DIMMING/DRIVER | FINISH |
|---------------------|---------------|---|---|---|--|---|----------------------------------|
| EMTH TRIMMED | 12 1X2 | L FLANGELESS F FLANGED | LH HIGH OUTPUT LO LOW OUTPUT | I IC AIRTIGHT* N NON-IC AIRTIGHT C CHICAGO PLENUM (NON-IC) | 120 120 VOLT 277 277 VOLT | ELV LOW-VOLTAGE ELECTRONIC 010 0-10 VOLT | B BLACK W WHITE |

EMTH **12**

MUST ORDER 2 LIGHT MODULES AND 1 TRIM (SOLD SEPARATELY).

*LOW-OUTPUT ONLY

LIGHT MODULES

| MODULES | CRI | CCT | FUNCTION | FINISH |
|-----------------------------|----------------------------------|---|--|----------------------------------|
| EMT TRIMMED APERTURE | 8 80CRI 9 90CRI | 27 2700K 30 3000K 35 3500K | A20 ADJUSTABLE - 20° OPTIC A30 ADJUSTABLE - 30° OPTIC A40 ADJUSTABLE - 40° OPTIC A60 ADJUSTABLE - 60° OPTIC | B BLACK W WHITE |

EMT

TRIM

| ELEMENT MULTIPLES | SPOTS | APERTURE OPENING | CEILING APPEARANCE | FINISH |
|--------------------|---------------------|-----------------------------------|---|------------------------------------|
| EMT TRIMMED | 12 1X2 SPOTS | R ROUND S SQUARE | FF FLANGED LF FLANGELESS | -B BLACK -W WHITE |

EMT **12**

REPLACEMENT OPTICS

| | BEAM SPREAD |
|---------------------|--|
| 353LEDGATOPT | 20 20° 30 30° 40 40° 60 60° |

353LEDGATOPT

LENSES/LOUVERS

| | TYPE | FINISH |
|------------|--|------------------------------------|
| MOC | GG PLAIN GLASS SF SOFT FOCUS LL LINEAR SPREAD EC EGGCRATE LOUVER LS1 1" LONG SNOOT LS12 1/2" LONG SNOOT | -B BLACK -W WHITE |

MOC **-**

PROJECT INFO

| FIXTURE TYPE & QUANTITY | JOB NAME & INFO | NOTES |
|-------------------------|-----------------|-------|
| | | |
| | | |

 **TECH LIGHTING**

VISUAL COMFORT & Co.

7400 Linder Avenue, Skokie, Illinois 60077

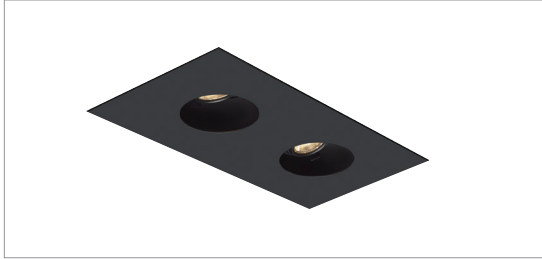
T 847.410.4400 F 847.410.4500



© 2020 Tech Lighting, L.L.C. All rights reserved. The "Tech Lighting" graphic is a registered trademark. Tech Lighting reserves the right to change specifications for product improvements without notification.

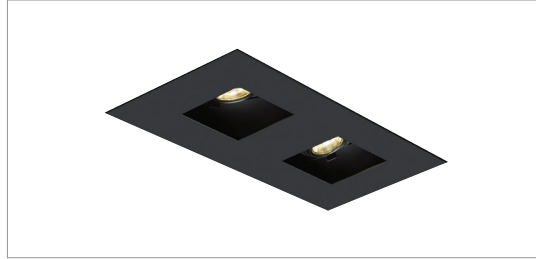
TRIMS

ROUND



1X2 FLANGED

SQUARE



1X2 FLANGED

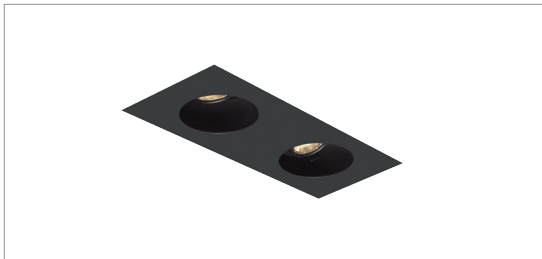
FINISH



BLACK



WHITE
(PAINTABLE)

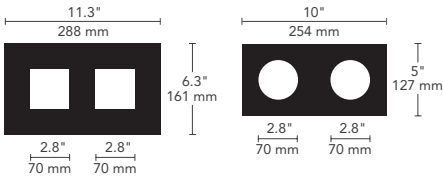


1X2 FLANGELESS



1X2 FLANGELESS

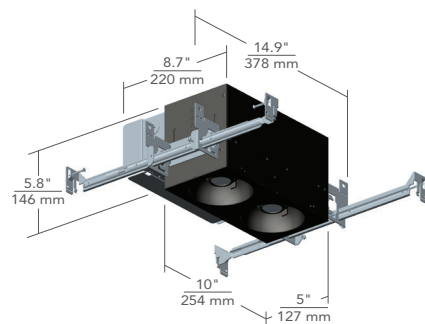
CEILING APPEARANCE



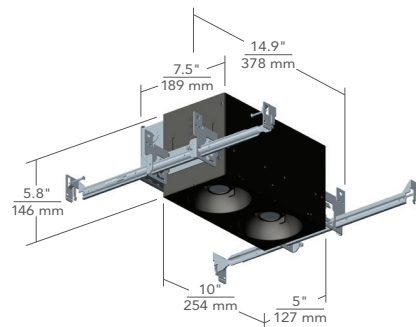
FLANGED

FLANGELESS

HOUSING

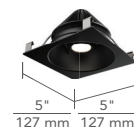


IC AIRTIGHT / NON-IC AIRTIGHT
(MAX CEILING THICKNESS: 2")



CHICAGO PLENUM
(MAX CEILING THICKNESS: 2")

SPOT MODULE



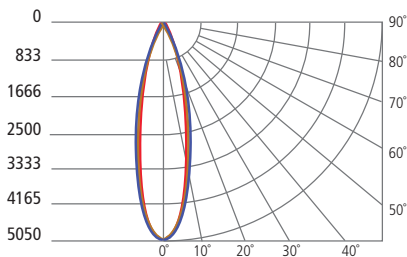
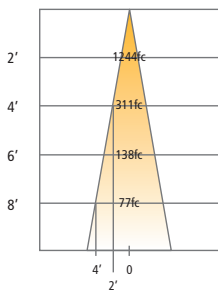
SPOT

PHOTOMETRICS: HIGH OUTPUT

DESCRIPTION: LED Multiples
20° Beam - 0° Tilt, 3000K
MODEL: LED Multiples 20° High

INPUT POWER (WATTS): 18.7
INPUT POWER FACTOR: 0.98
ABSOLUTE LUMINOUS FLUX (LUMENS): 1512
LUMEN EFFICACY (LUMENS PER WATT): 81

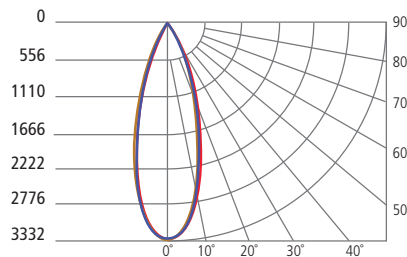
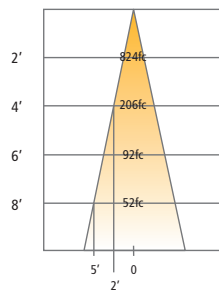
| ANGLE | 0° | 45° | 90° |
|-------|------|------|------|
| 0° | 4973 | 4973 | 4973 |
| 5° | 4211 | 4273 | 4455 |
| 10° | 2961 | 3031 | 3299 |
| 15° | 1921 | 1965 | 2110 |
| 20° | 1183 | 1210 | 1298 |
| 25° | 655 | 678 | 737 |
| 30° | 351 | 365 | 400 |
| 35° | 194 | 203 | 219 |
| 40° | 108 | 113 | 123 |
| 45° | 61 | 62 | 69 |
| 50° | 35 | 36 | 39 |
| 55° | 20 | 21 | 23 |
| 60° | 13 | 13 | 14 |
| 65° | 6 | 7 | 8 |
| 70° | 1 | 1 | 4 |
| 75° | 0 | 0 | 0 |
| 80° | 0 | 0 | 0 |
| 85° | 0 | 0 | 0 |
| 90° | 0 | 0 | 0 |



DESCRIPTION: LED Multiples
30° Beam - 0° Tilt, 3000K
MODEL: LED Multiples 30° High

INPUT POWER (WATTS): 18.7
INPUT POWER FACTOR: 0.98
ABSOLUTE LUMINOUS FLUX (LUMENS): 1326
LUMEN EFFICACY (LUMENS PER WATT): 71

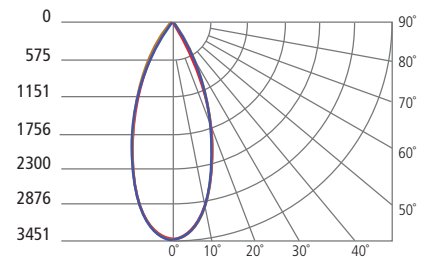
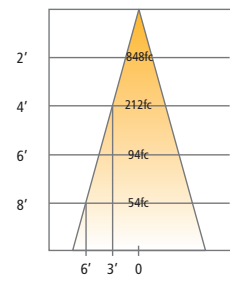
| ANGLE | 0° | 45° | 90° |
|-------|------|------|------|
| 0° | 3296 | 3296 | 3296 |
| 5° | 3073 | 3087 | 3170 |
| 10° | 2500 | 2519 | 2591 |
| 15° | 1735 | 1765 | 1831 |
| 20° | 1069 | 1091 | 1145 |
| 25° | 249 | 618 | 653 |
| 30° | 325 | 333 | 356 |
| 35° | 176 | 182 | 196 |
| 40° | 101 | 105 | 114 |
| 45° | 63 | 67 | 73 |
| 50° | 43 | 45 | 50 |
| 55° | 30 | 31 | 36 |
| 60° | 19 | 20 | 24 |
| 65° | 11 | 12 | 13 |
| 70° | 5 | 6 | 7 |
| 75° | 0 | 0 | 1 |
| 80° | 0 | 0 | 0 |
| 85° | 0 | 0 | 0 |
| 90° | 0 | 0 | 0 |



DESCRIPTION: LED Multiples
40° Beam - 0° Tilt, 3000K
MODEL: LED Multiples 40° High

INPUT POWER (WATTS): 18.7
INPUT POWER FACTOR: 0.98
ABSOLUTE LUMINOUS FLUX (LUMENS): 1631
LUMEN EFFICACY (LUMENS PER WATT): 87

| ANGLE | 0° | 45° | 90° |
|-------|------|------|------|
| 0° | 3396 | 3396 | 3396 |
| 5° | 3264 | 3262 | 3277 |
| 10° | 2910 | 2904 | 2949 |
| 15° | 2335 | 2344 | 2387 |
| 20° | 1599 | 1622 | 1683 |
| 25° | 893 | 929 | 981 |
| 30° | 438 | 458 | 493 |
| 35° | 209 | 217 | 233 |
| 40° | 105 | 107 | 112 |
| 45° | 54 | 56 | 57 |
| 50° | 29 | 30 | 32 |
| 55° | 17 | 17 | 18 |
| 60° | 10 | 10 | 11 |
| 65° | 5 | 5 | 7 |
| 70° | 1 | 1 | 2 |
| 75° | 0 | 0 | 0 |
| 80° | 0 | 0 | 0 |
| 85° | 0 | 0 | 0 |
| 90° | 0 | 0 | 0 |

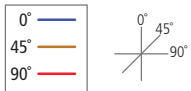
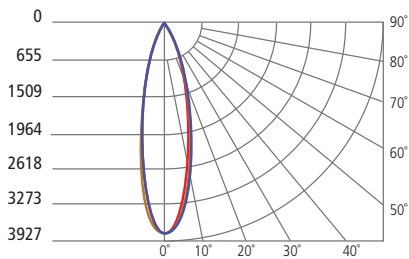
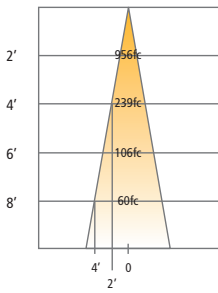


PHOTOMETRICS: LOW OUTPUT

DESCRIPTION: LED Multiples
20° Beam - 0° Tilt, 3000K
MODEL: LED Multiples 20° Low

INPUT POWER (WATTS): 12.4
INPUT POWER FACTOR: 0.98
ABSOLUTE LUMINOUS FLUX (LUMENS): 1171
LUMEN EFFICACY (LUMENS PER WATT): 94

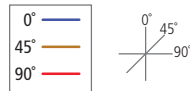
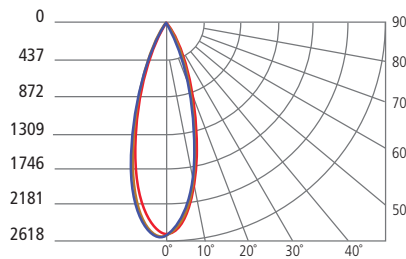
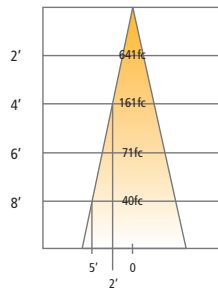
| ANGLE | 0° | 45° | 90° |
|-------|------|------|------|
| 0° | 3820 | 3820 | 3820 |
| 5° | 3486 | 3447 | 3358 |
| 10° | 2520 | 2497 | 2435 |
| 15° | 1646 | 1633 | 1584 |
| 20° | 1028 | 1020 | 991 |
| 25° | 593 | 593 | 570 |
| 30° | 321 | 3228 | 313 |
| 35° | 180 | 183 | 175 |
| 40° | 98 | 101 | 95 |
| 45° | 52 | 54 | 52 |
| 50° | 31 | 30 | 31 |
| 55° | 18 | 18 | 18 |
| 60° | 11 | 11 | 11 |
| 65° | 7 | 7 | 7 |
| 70° | 2 | 2 | 2 |
| 75° | 0 | 0 | 0 |
| 80° | 0 | 0 | 0 |
| 85° | 0 | 0 | 0 |
| 90° | 0 | 0 | 0 |



DESCRIPTION: LED Multiples
30° Beam - 0° Tilt, 3000K
MODEL: LED Multiples 30° Low

INPUT POWER (WATTS): 12.4
INPUT POWER FACTOR: 0.98
ABSOLUTE LUMINOUS FLUX (LUMENS): 1023
LUMEN EFFICACY (LUMENS PER WATT): 84

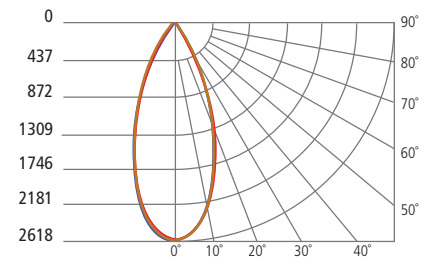
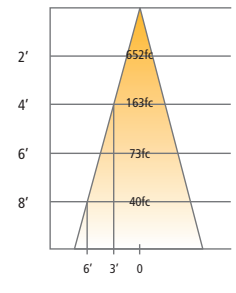
| ANGLE | 0° | 45° | 90° |
|-------|------|------|------|
| 0° | 2566 | 2566 | 2566 |
| 5° | 2484 | 2467 | 2416 |
| 10° | 2112 | 2084 | 1987 |
| 15° | 1541 | 1507 | 1401 |
| 20° | 990 | 960 | 870 |
| 25° | 578 | 562 | 501 |
| 30° | 317 | 309 | 277 |
| 35° | 171 | 169 | 155 |
| 40° | 95 | 95 | 93 |
| 45° | 58 | 60 | 58 |
| 50° | 39 | 39 | 40 |
| 55° | 26 | 27 | 29 |
| 60° | 17 | 18 | 19 |
| 65° | 11 | 11 | 11 |
| 70° | 7 | 7 | 6 |
| 75° | 2 | 2 | 1 |
| 80° | 0 | 0 | 0 |
| 85° | 0 | 0 | 0 |
| 90° | 0 | 0 | 0 |



DESCRIPTION: LED Multiples
40° Beam - 0° Tilt, 3000K
MODEL: LED Multiples 40° Low

INPUT POWER (WATTS): 12.4
INPUT POWER FACTOR: 0.98
ABSOLUTE LUMINOUS FLUX (LUMENS): 1256
LUMEN EFFICACY (LUMENS PER WATT): 101

| ANGLE | 0° | 45° | 90° |
|-------|------|------|------|
| 0° | 2604 | 2604 | 2604 |
| 5° | 2543 | 2542 | 2506 |
| 10° | 2328 | 2306 | 2253 |
| 15° | 1943 | 1914 | 1828 |
| 20° | 1435 | 1398 | 1288 |
| 25° | 876 | 839 | 752 |
| 30° | 449 | 431 | 378 |
| 35° | 213 | 207 | 180 |
| 40° | 98 | 96 | 88 |
| 45° | 50 | 50 | 46 |
| 50° | 29 | 27 | 26 |
| 55° | 17 | 15 | 14 |
| 60° | 10 | 10 | 10 |
| 65° | 6 | 6 | 6 |
| 70° | 2 | 2 | 2 |
| 75° | 1 | 0 | 0 |
| 80° | 0 | 0 | 0 |
| 85° | 0 | 0 | 0 |
| 90° | 0 | 0 | 0 |



ELEMENT™ MULTIPLES

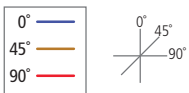
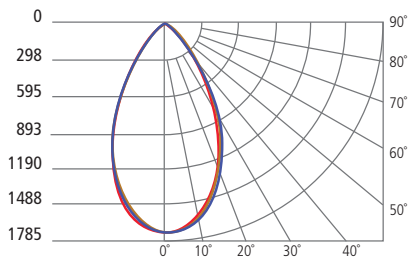
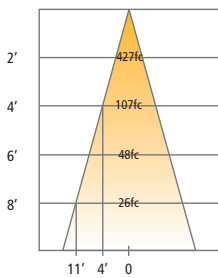
1 X 2 TRIMMED

PHOTOMETRICS: 60° OPTIC

DESCRIPTION: LED Multiples
60° Beam - 0° Tilt, 3000K
MODEL: LED Multiples 60° High

INPUT POWER (WATTS): 21.1
INPUT POWER FACTOR: 0.98
ABSOLUTE LUMINOUS FLUX (LUMENS): 1667
LUMEN EFFICACY (LUMENS PER WATT): 79

| ANGLE | 0° | 45° | 90° |
|-------|------|------|------|
| 0° | 1708 | 1708 | 1708 |
| 5° | 1692 | 1683 | 1671 |
| 10° | 1614 | 1595 | 1579 |
| 15° | 1477 | 1465 | 1435 |
| 20° | 1298 | 1295 | 1246 |
| 25° | 1086 | 1067 | 1026 |
| 30° | 841 | 808 | 779 |
| 35° | 599 | 578 | 553 |
| 40° | 405 | 395 | 375 |
| 45° | 268 | 253 | 239 |
| 50° | 163 | 155 | 142 |
| 55° | 95 | 90 | 79 |
| 60° | 51 | 49 | 42 |
| 65° | 26 | 25 | 20 |
| 70° | 10 | 8 | 7 |
| 75° | 1 | 0 | 0 |
| 80° | 0 | 0 | 0 |
| 85° | 0 | 0 | 0 |
| 90° | 0 | 0 | 0 |



DESCRIPTION: LED Multiples
60° Beam - 0° Tilt, 3000K
MODEL: LED Multiples 60° Low

INPUT POWER (WATTS): 14.6
INPUT POWER FACTOR: 0.98
ABSOLUTE LUMINOUS FLUX (LUMENS): 1283
LUMEN EFFICACY (LUMENS PER WATT): 88

| ANGLE | 0° | 45° | 90° |
|-------|------|------|------|
| 0° | 1315 | 1315 | 1315 |
| 5° | 1303 | 1296 | 1286 |
| 10° | 1242 | 1228 | 1216 |
| 15° | 1136 | 1128 | 1106 |
| 20° | 1000 | 996 | 959 |
| 25° | 837 | 822 | 790 |
| 30° | 649 | 622 | 601 |
| 35° | 462 | 445 | 390 |
| 40° | 312 | 305 | 289 |
| 45° | 206 | 195 | 183 |
| 50° | 126 | 119 | 109 |
| 55° | 73 | 69 | 61 |
| 60° | 39 | 37 | 32 |
| 65° | 20 | 19 | 15 |
| 70° | 7 | 7 | 5 |
| 75° | 0 | 0 | 0 |
| 80° | 0 | 0 | 0 |
| 85° | 0 | 0 | 0 |
| 90° | 0 | 0 | 0 |

