

**CAUTION**

Turn off the main power at the circuit breaker before installing the fixture in order to prevent possible shock. If you are unfamiliar with proper electrical wiring connections, obtain the services of a qualified electrician.

GENERAL

Read all instructions carefully for safe operation and installation.

All electrical connections must be in accordance with local and national electrical code (N.E.C.) standards.

Remove the fixture and mounting package from the box. Make sure no parts are missing by referencing the illustrations on these Installation Instructions. Please contact Blackjack Lighting at 847-941-0588 if any parts are missing or damaged.

This product is suitable for WET locations.

PREPARATION

1. Remove the fixture from its box.
2. Remove the fixture pan/ acrylic lens assembly(11/14) from the back panel(10) by loosening the two set screws(12).

MOUNTING

3. Pull the supply wires(2&4) and the house ground wire(6) out of the outlet box(1). Thread them through the large center hole in back panel(10).
4. Place the back panel(10) over the outlet box(1). Insert the mounting screws(9) through the slots in the back panel and then tightly secure them into the outlet box(1).

CONNECTING WIRES

5. Using the wire connectors(8), connect the white supply wire(2) to the white fixture wire(3); connect the black supply wire(4) to the black fixture wire(5); and connect the house ground wire(6) to the fixture ground wire(7).

FINAL ASSEMBLY

6. Secure the fixture pan / acrylic lens assembly(11/14) to the back panel(10) by attaching the two set screws(12).

DIMMING

Fixture Dimming Type: TRIAC Dimmable.

For recommended dimmers, see <http://blackjacklighting.com>

HARDWARE



Wire Connector (#8)
(3 included)



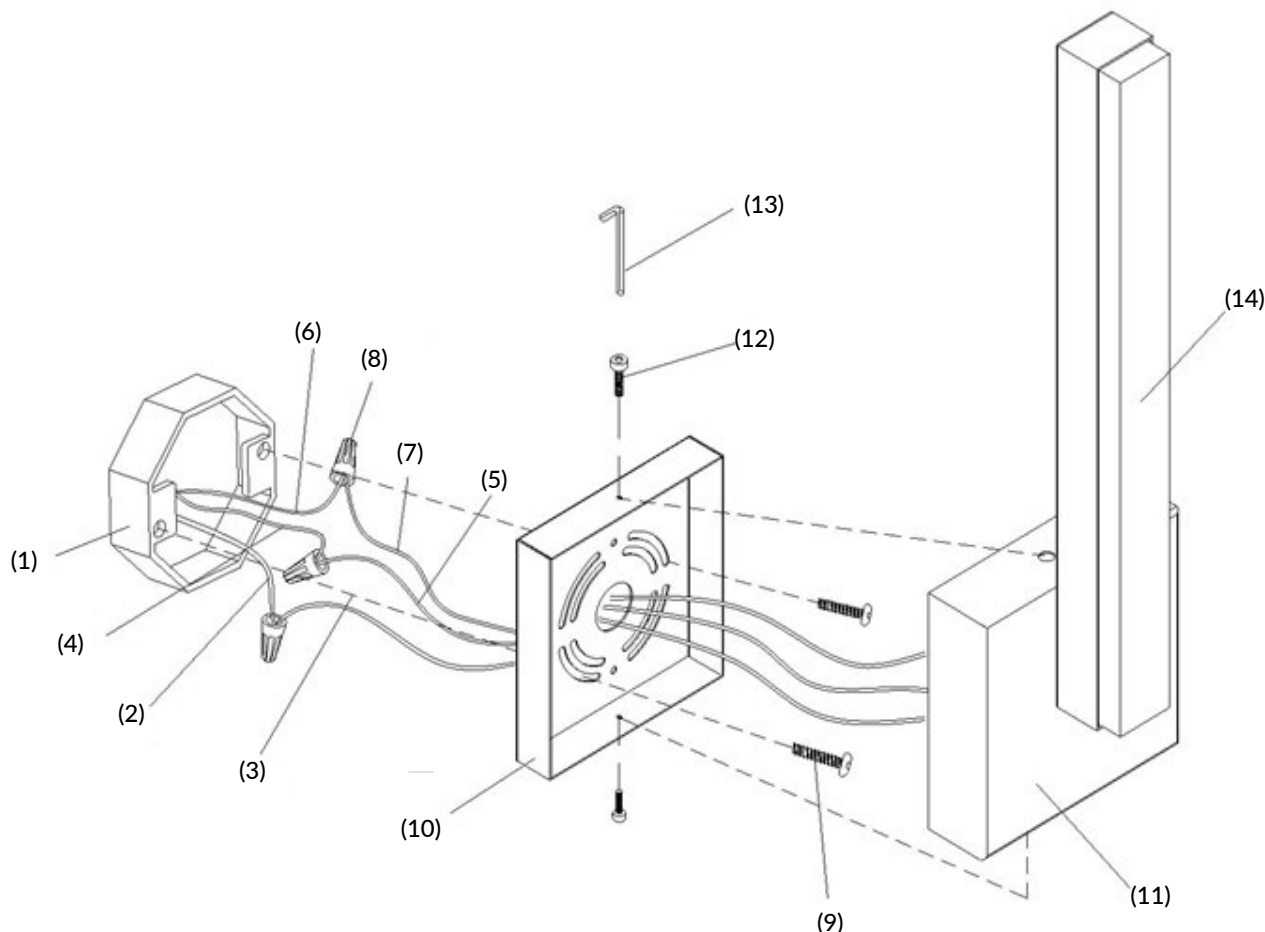
Mounting Screw (#9)
(2 included)



Set Screws (#12)
(2 included)



Allen Wrench (#13)
(1 included)



- | | |
|---------------------------|---------------------------|
| 1. OUTLET BOX (BY OTHERS) | 8. WIRE CONNECTORS |
| 2. WHITE SUPPLY WIRE | 9. MOUNTING SCREWS |
| 3. WHITE FIXTURE WIRE | 10. BACK PANEL |
| 4. BLACK SUPPLY WIRE | 11. FIXTURE PAN |
| 5. BLACK FIXTURE WIRE | 12. SCREWS |
| 6. HOUSE GROUND WIRE | 13. ACRYLIC LENS |
| 7. FIXTURE GROUND WIRE | 14. WHITE MICRO CONNECTOR |