

# NS-4910

## 4" Stepped Baffle with Square Trim

Type \_\_\_\_\_

Project \_\_\_\_\_

Catalog No. \_\_\_\_\_

Notes \_\_\_\_\_

### FEATURES

**Trim:** 4" die cast aluminum flange provides sharp clean corners. Non-reflective painted finishes and square trim.

**Mounting:** Trim includes three trim clips that securely mount trim in housing.

### COMPATIBLE LAMP / HOUSINGS

**Line Voltage:**

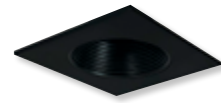
50W R20/PAR20 max. (NS-4010AT; NSIC-4010AT; NSR-4040AT; NSRIC-4040AT)  
See individual housing specification sheets for more information.

### LABELS AND LISTINGS

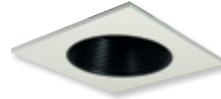
\* cULus Listed for Damp Location when used with compatible housing



### PRODUCT IMAGES & DIMENSIONS



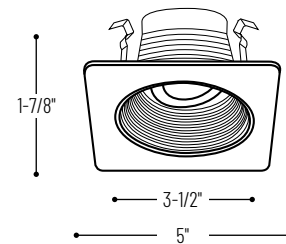
**NS-4910BB**



**NS-4910BW**



**NS-4910WW**



## 4" Stepped Baffle with Square Trim

Catalog No.

- NS-4910BB** = 4" Black Stepped Baffle with Black Square Trim
- NS-4910BW** = 4" Black Stepped Baffle with White Square Trim
- NS-4910WW** = 4" White Stepped Baffle with White Square Trim

## Compatible Housings

Catalog No.

- NS-4010AT** = Non-IC Air-Tight New Construction / 50W max
- NSIC-4010AT** = IC Air-Tight New Construction / 50W max
- NSR-4040AT** = Non-IC Air-Tight Remodel / 50W max
- NSRIC-4040AT** = IC Air-Tight Remodel / 50W max

Example: **NS-4910WW** = 4" White Stepped Baffle with White Square Trim