



1718 W. Fullerton Chicago, IL 60614
 Ph: 773.770.1195 • Fax: 773.935.5613
 www.PureEdgeLighting.com • info@PureEdgeLighting.com
 © 2016 PureEdge Lighting. All Rights Reserved.

Installation Instructions for **Verge Corner 24VDC**

VGCO-_-_-_-

IMPORTANT INFORMATION

- This instruction shows a typical installation.

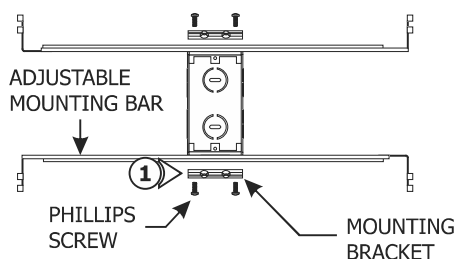
SAVE THESE INSTRUCTIONS!



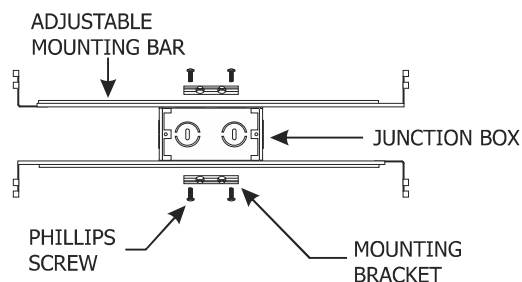
Install the Fixture

A

VERTICAL ORIENTATION

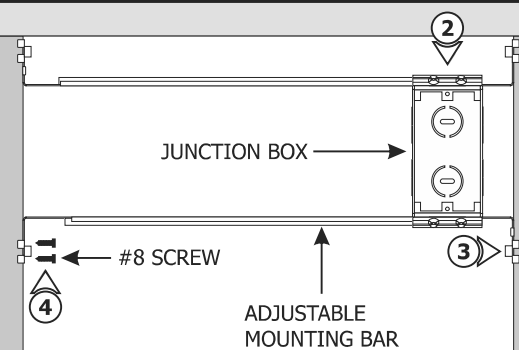


HORIZONTAL ORIENTATION



NOTE: The adjustable mounting bars mount to studs that are spaced 13" to 24" apart.

1: Mount each adjustable mounting bar to one side of the junction box (mounts to any side of the housing depending on the orientation of the channel) and secure them with the mounting brackets and two Phillips screws provided.

B


NOTE: For alternate mounting method, refer to steps 7 and 8 on Page 2.

NOTE: Junction box must be installed 4" from the ceiling or wall when using the provided backer plate.

2: Select the location between the two studs for the junction box to be mounted.

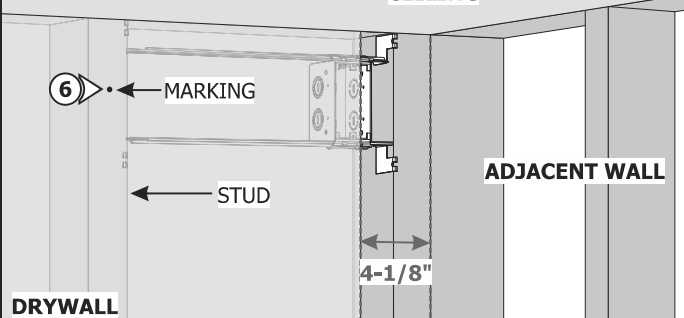
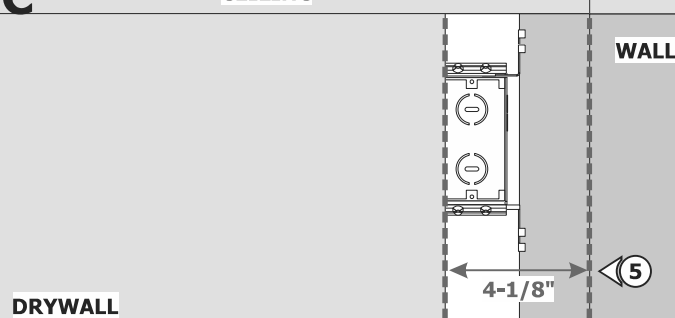
3: Place the adjustable mounting bar tabs between the studs.

4: Make sure the lips on the adjustable mounting bars are against the studs. Secure the adjustable bars to the studs with the eight #8 screws.

C

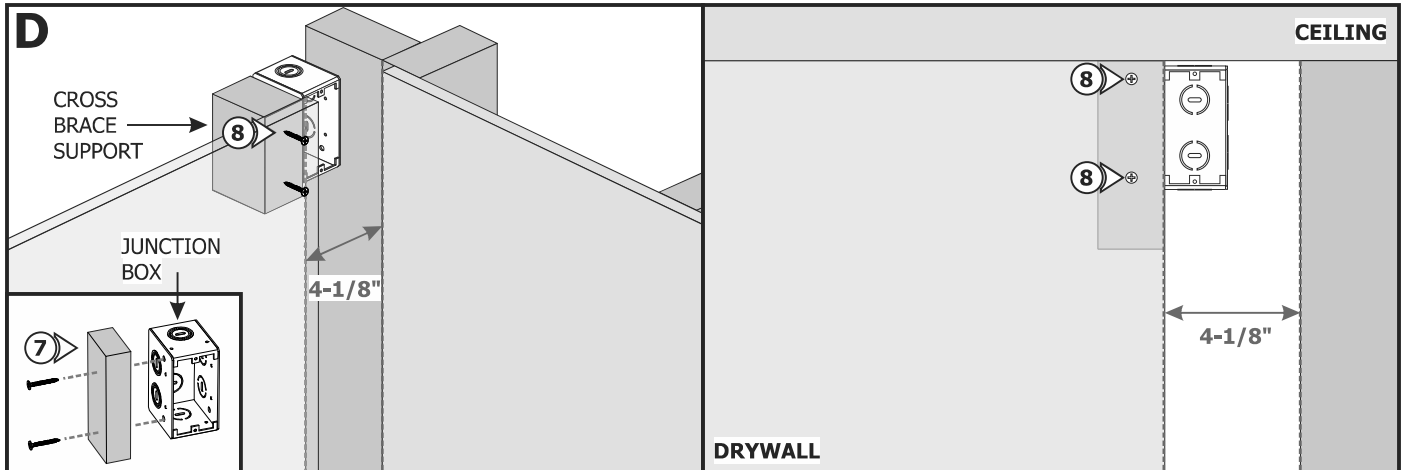
CEILING

CEILING



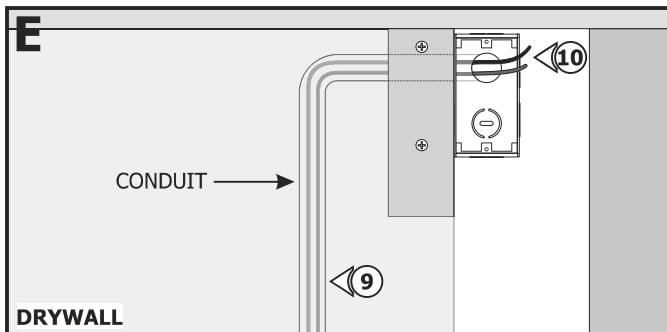
5: Cut the drywall 4-1/8" from the wall.

6: Mount the drywall to the studs. Mark the stud locations on the drywall.



7: ALTERNATE MOUNTING METHOD: Secure the junction box using a cross brace support to the drywall or adjacent studs.

8: If required, secure the junction box assembly to the drywall using drywall screws.



9: Remove a knockout to install the power line conduit.

10: Install the conduit and run the low voltage 24VDC power wires coming from the remote power supply to the junction box.

11: Refer to the instruction provided with the power supply along with the wiring diagram for proper wiring.

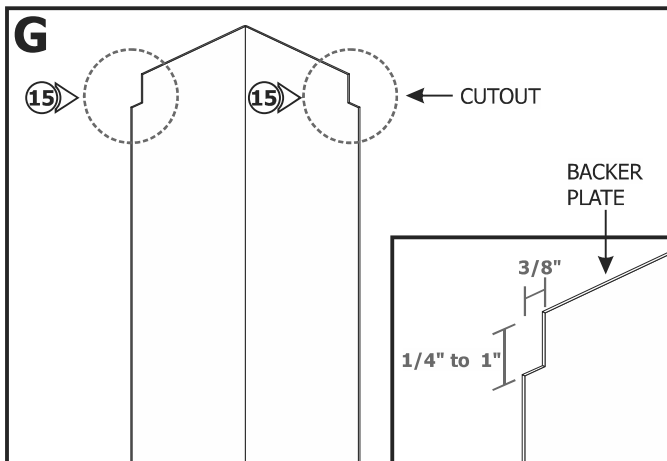
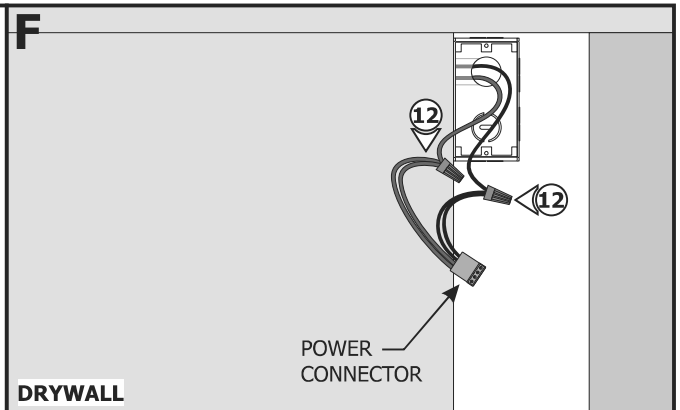
NOTE: If installation requires RGB, RGB+W or Tunable White, refer to wiring diagrams on Pages 7-9.

12: Connect the +24VDC power supply wire to the red power connector wires with a wire nut. Connect the -24VDC power supply wire to the black power connector wires with a wire nut.

13: Place the wire nut connections inside the junction box, leaving the power connector free.

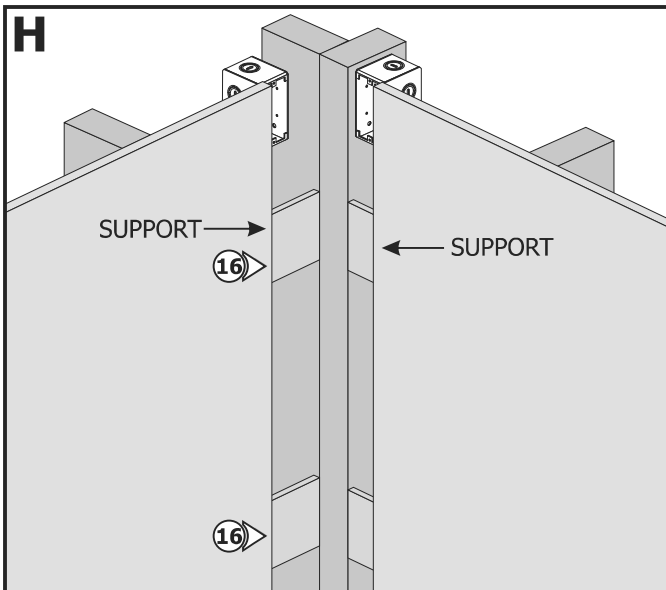
14: Repeat steps 1 through 13 for the other wall.

CAUTION: Unroll the entire LED strip from the reel and use the power connector to power the strip making sure there is no outage before continuing with the installation. Afterwards, carefully roll the LED strip loosely back into the reel.



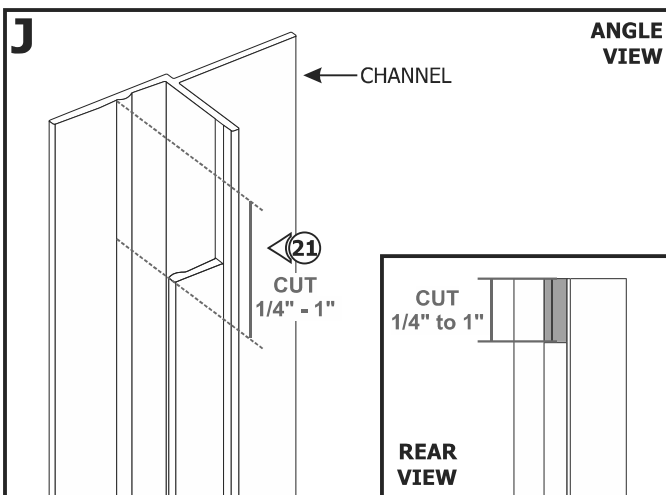
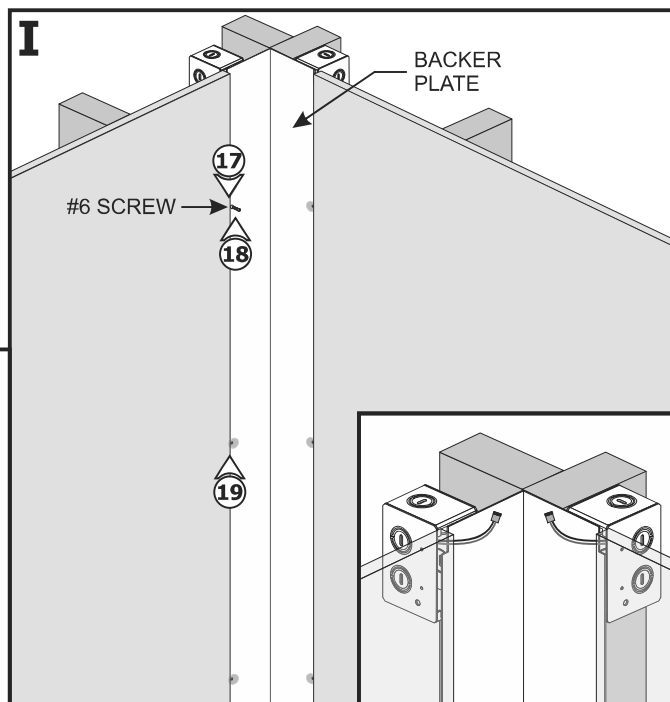
CAUTION: It may be necessary to remove material from the stud, backer plate, Verge channel, or lens to route power to the installation. Consult installation design when considering routing power.

15: Use a Dremel or other appropriate tool to make a 1/4" to 1" x 3/8" cutout on the backer plate that will be placed over the junction boxes.



16: For areas with lots of vibrations, use shim wood behind drywall and against studs as supports or install 2"x4" cross brace supports as needed (suggested spacing is 32" to avoid cracking of plaster). Mark the locations of the supports on the drywall for reference.

- 17:** Using the marked locations on the drywall, carefully make holes to the backer plate using the provided square drill with counter sink bit.
- 18:** Secure the backer plate to the studs with the #6 screws using the provided square recess bit.
- 19:** Apply plaster (highlighted in blue) to the backer plate to cover the drywall screws.
- 20:** Sand, paint and finish the backer plate and screws before continuing. For best results, use matte paint.



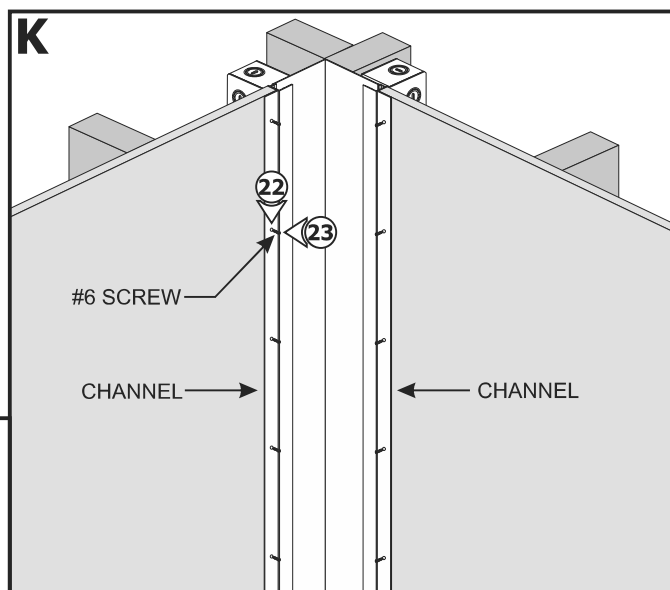
ANGLE VIEW

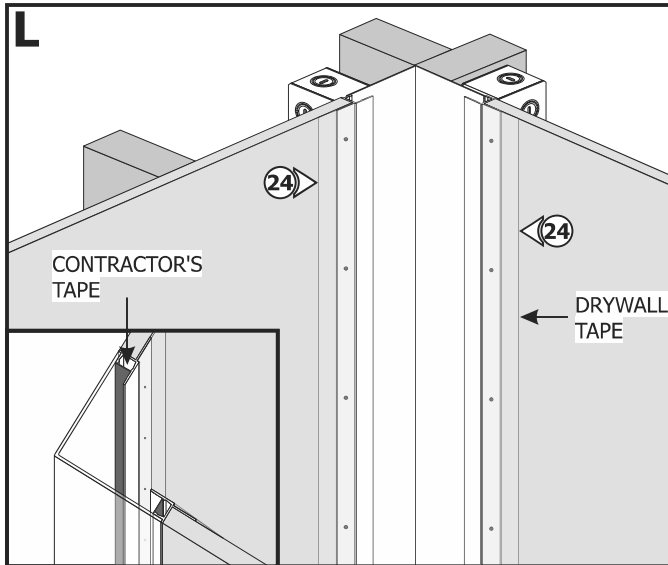
REAR VIEW

CAUTION! It may be necessary to remove material from the stud, backer plate, Verge channel, or lens to route power to the installation. Consult installation design when considering routing power.

21: Use a Dremel or other appropriate tool to cut away a 1/4" to 1" section of the channel that will be placed over the junction box.

- 22:** Carefully make holes on the Verge channels using the provided square drill with counter sink bit.
- 23:** Secure the channels to the drywall with the #6 screws using the provided square recess bit. Suggested screw spacing is 6".





NOTE: Cover the channel opening with contractor's tape before plastering to prevent plaster and dust entering inside the channel.

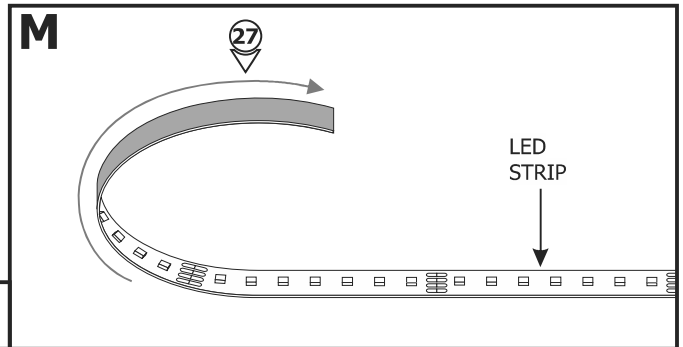
NOTE: For areas with lots of vibration, it is suggested to use Durabond to avoid cracking of plaster.

NOTE: Do Not use premixed joint compound "Soft Mud."
No use compuesto para juntas premezclado "Soft Mud."

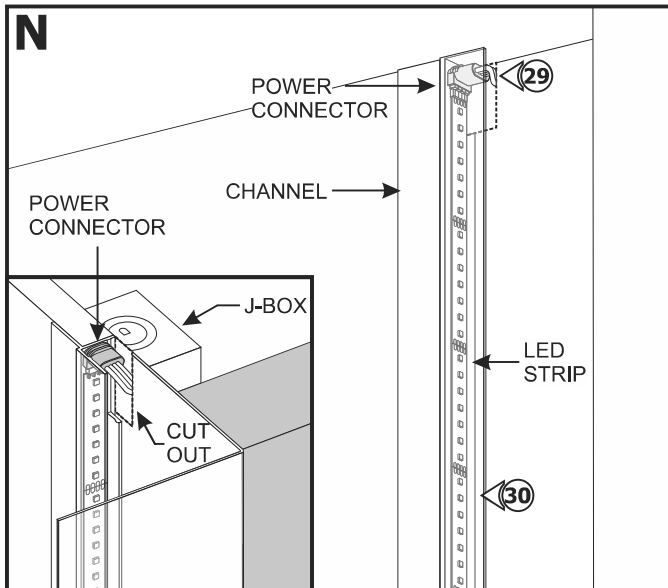
24: Must apply drywall tape (Ultra-Thin drywall tape suggested) along edges of channel to prevent cracking of plaster after installation. DO NOT overlap strips of drywall tape.

25: Plaster the channels flange edges to the wall & fill screw holes. Finish the walls properly.

26: Remove the blue contractor tape & clean the inside of the channel.



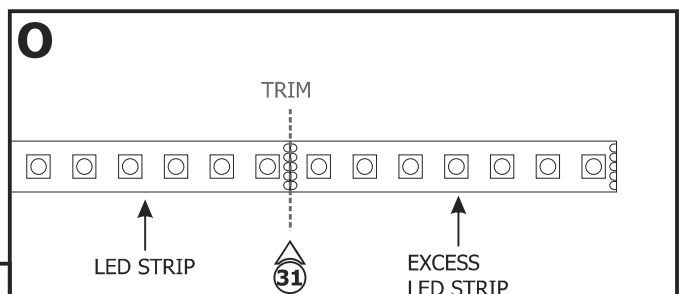
27: Gently uncoil the LED soft strip before applying to the channel otherwise the strip may lift off of the surface.



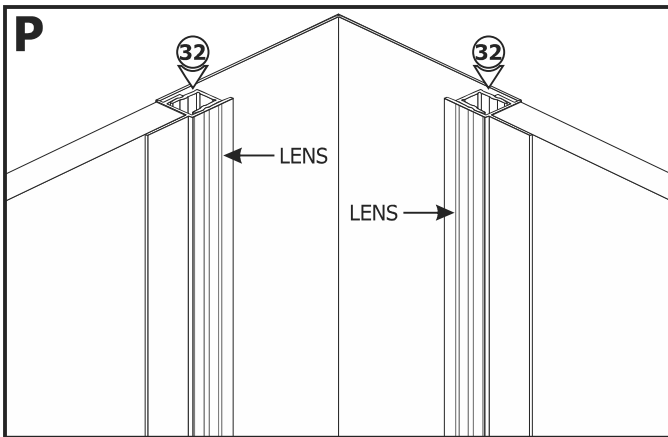
28: Carefully remove the backing from the LED soft strip, making sure not to remove the tape from the soft strip.

29: For each channel, align the red wire side of the power connector with the "+24VDC" marking on the soft strip. Push the male connector of the soft strip into the female power connector.

30: Firmly press down the adhesive portion of the LED strip onto the channel surface while removing the rest of the backing, making sure there are no air bubbles that can cause surface irregularities.

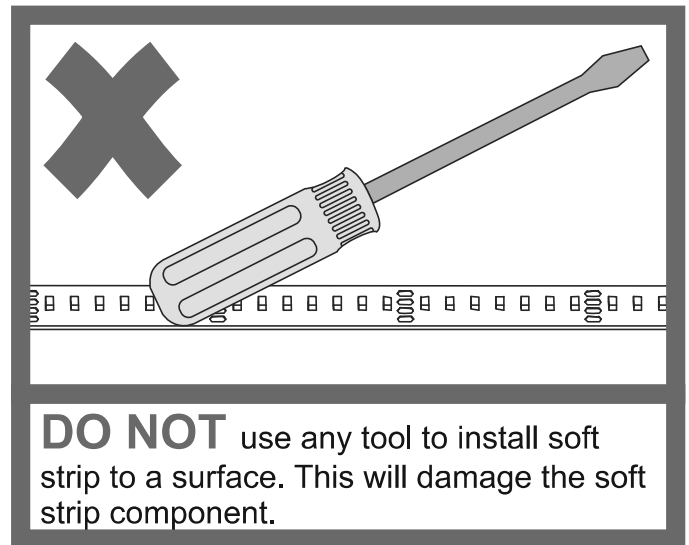
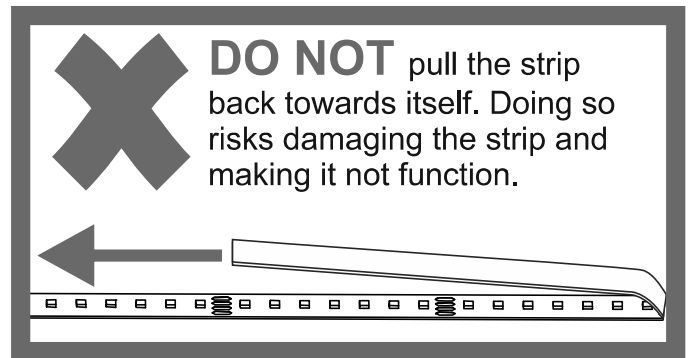
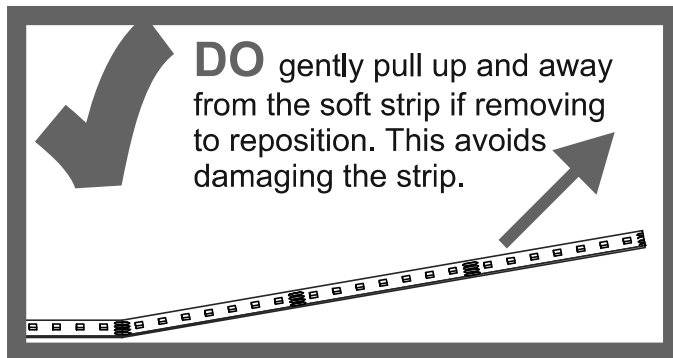


31: If required, trim excess LED soft strip ONLY on the dashed cuttable section. Ensure the entire length of the channel is covered with LED strip to avoid unlit areas.

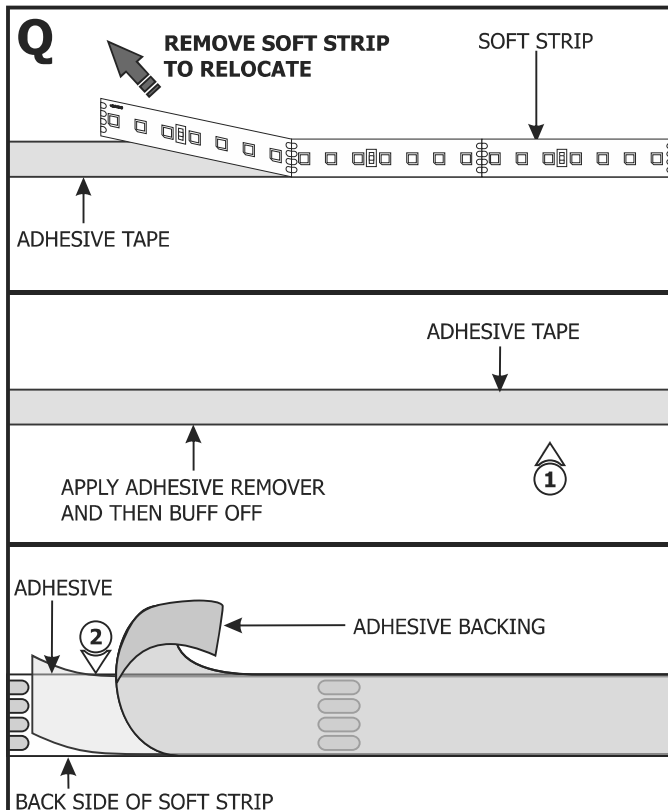


32: If necessary, remove material from the lens to allow room for the power connection. Snap the lens into the channel. Ensure the lens is fully seated.

IMPORTANT INFORMATION REGARDING INSTALLATION AND REWORK OF SOFT STRIP LED



Relocating Soft Strip (Optional)

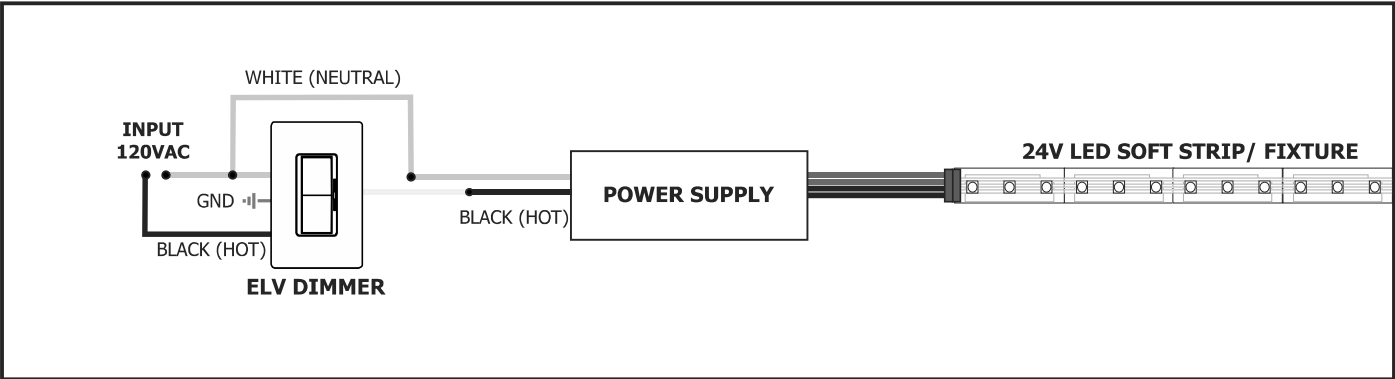


NOTE: If relocating the installed soft strip, make sure that the adhesive tape on back of the soft strip covers the entire strip. The adhesive tape isolates the strip from the installation surface. Damaged or inconsistent adhesive tape may cause the contacts on the back of the strip to come in contact with the conductive heat sink which will cause the strip to short and burn. Call PureEdge Lighting to get replacement adhesive tape and/or optional aluminum heat sink tape (SS-HR-F).

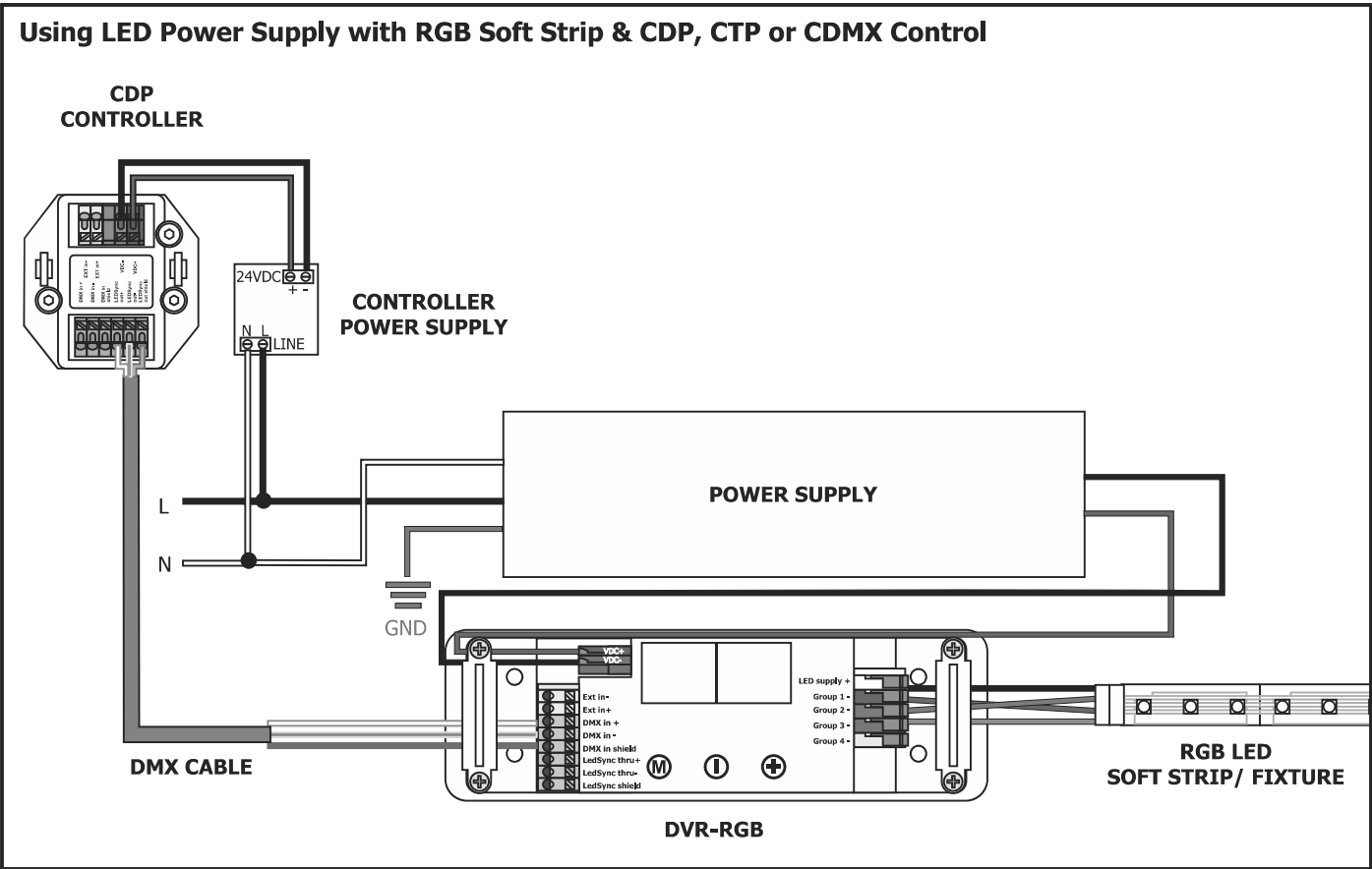
- 1:** To remove tape residue from back of the strip, apply WD-40, Goo Gone, or a mixture of warm water and lemon oil to the corner of a clean, dry towel. Gently buff the area containing the adhesive residue until it is completely removed.
- 2:** Gently remove a few inches from one side of the tape backing. Attach the adhesive tape to the back of the soft strip and apply moderate pressure to affix the tape. Continue this step a few inches at a time until the entire adhesive tape is attached to back of the soft strip.
- 3:** Refer to the steps 28 through 30 to reinstall the soft strip.

Wiring Diagrams

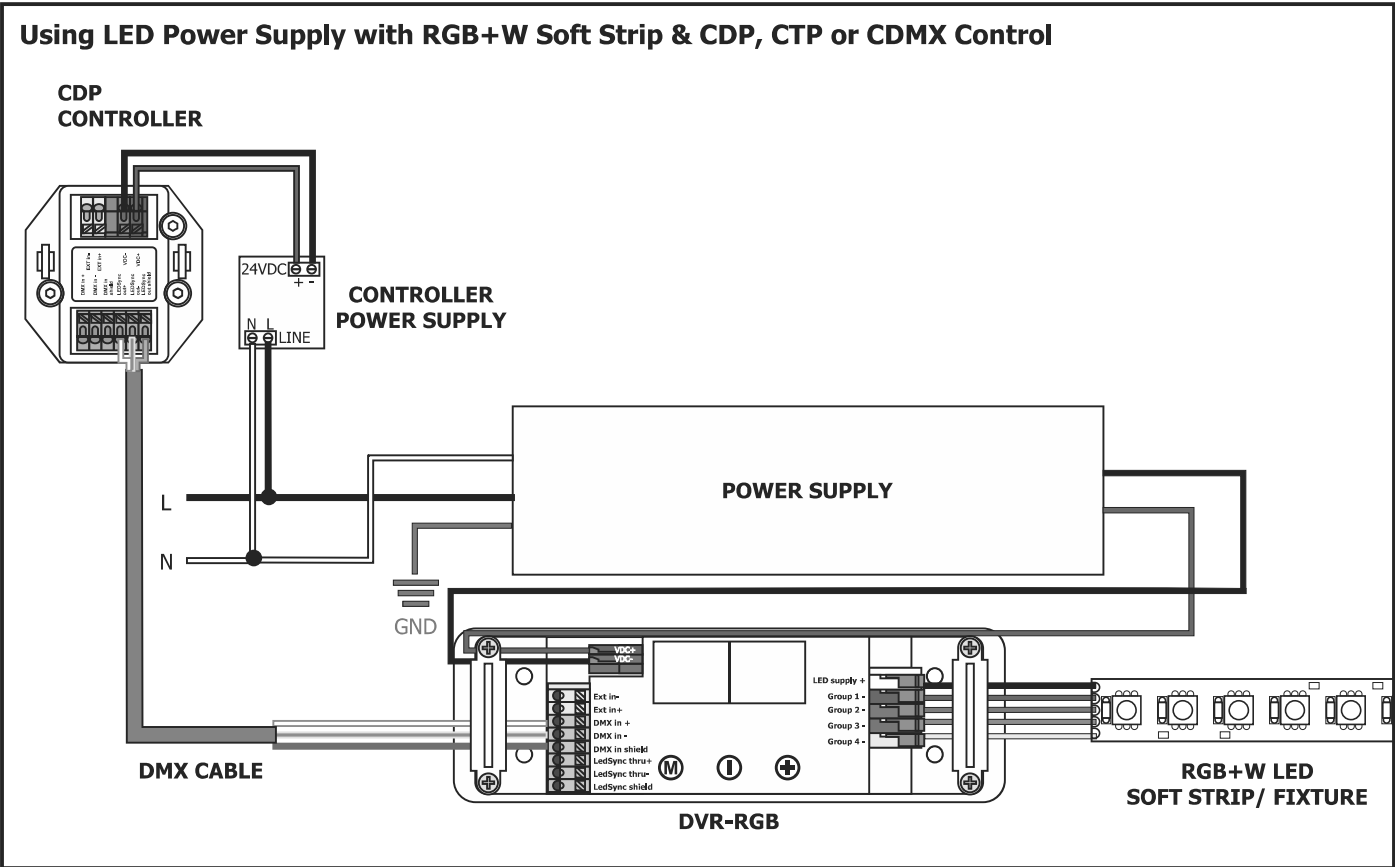
General 24VDC Configuration



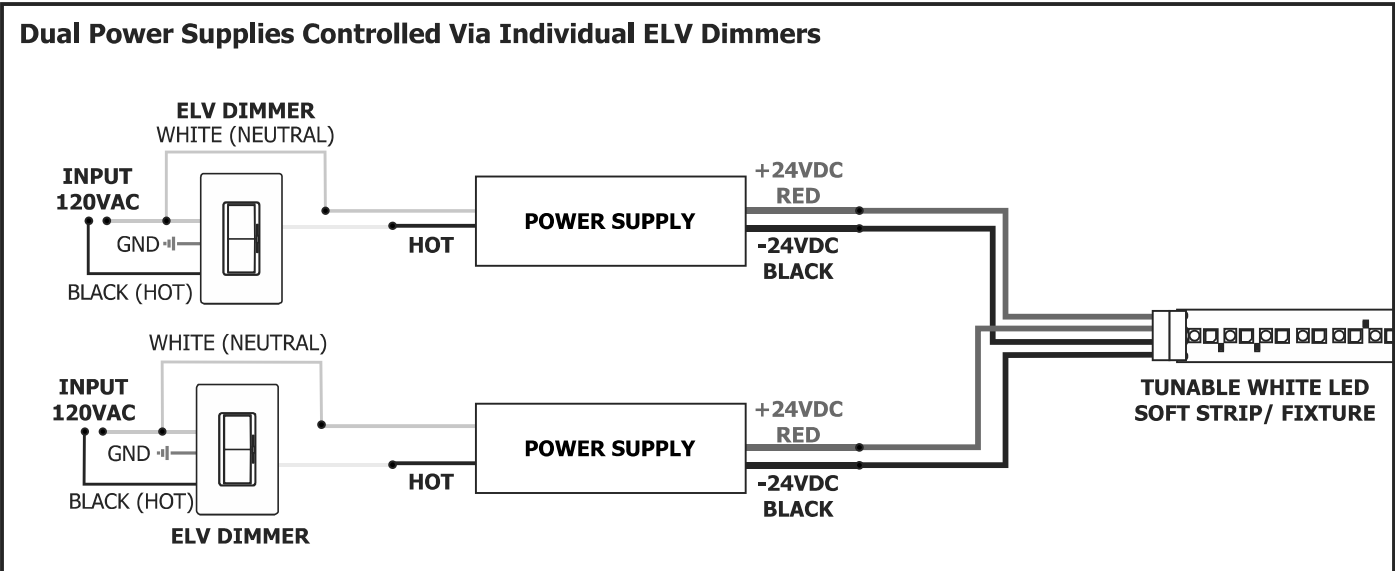
Standard RGB Configuration



RGB+W Configuration



Tunable White Configuration



Tunable White Configuration

