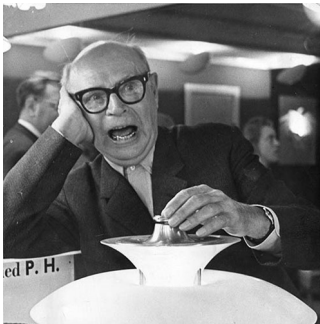


PH 2-1 STEM FITTING

The fixture is designed based on the principle of a reflective three-shade system, which directs the majority of the light downwards. The shades are made of handblown opal three-layer glass, which is glossy on the top and sandblasted matte on the underside, giving a soft and diffused light distribution.



Poul Henningsen

Poul Henningsen was born in Copenhagen by the famous Danish writer Agnes Henningsen. He never graduated as an architect, but studied at The Technical School at Frederiksberg, Denmark from 1911-14, and then at Technical College in Copenhagen from 1914-17.



Product info

Information

Electrical: System Wattage: 30W Delivered lumens: 1,025 Efficacy: 34 lm/W Certifications: cULus, Dry Location
Protection class IP20 Controllability: Phase dimming Actual performance dependent upon screw-base lamp used.

Mounting

Canopy: White. Cord length: 12'. Cord type: 3-conductor, 18 AWG black braided fabric covered power cord.

Finish

High lustre chrome plated. White opal glass.

Materials

Shades: Handblown white opal glass. Body: High lustre chrome plated, brass. Socket cover: High lustre chrome plated, spun aluminum.

Sizes and weight

Width x Height x Length (in.) | 23.5 x 21.7 x 23.5 Max 6.7 lbs

Compliance

cULus, Dry location.

Light source

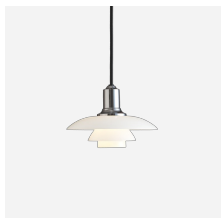
G16.5/IF candelabra



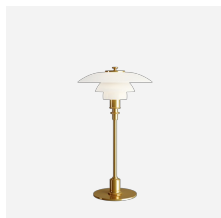
Information

Electrical:
System Wattage: 30W
Delivered lumens: 1,025
Efficacy: 34 lm/W
Certifications:
cULus, Dry Location
Protection class IP20
Controllability: Phase dimming
Actual performance dependent upon screw-base lamp used.

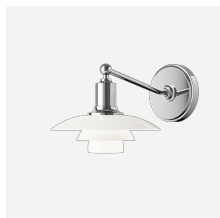
Related products



PH 2/1 Pendant



PH 2/1 Table



PH 2-1 Wall

Product variants

Light source

G16.5/IF candelabra

Voltage frequency

120V

Product description

PH 2/1 Stem Fitting pendant is one of the iconic fixtures recognized throughout the world. It is a small-scale pendant of gently sloped glass shades with a lustrous metal socket housing on top. The iconic design is based on the principle of a reflective three-shade system, which directs the majority of the light downwards. The shades are made of handblown, opal white, three-layer glass, which is glossy on top and sandblasted matte on the underside, giving a soft and uniform light distribution. Part of a family including indoor and outdoor products.

Mounting

Mounts onto a 4 inch octagonal outlet box. Canopy: White, flat cone profile, 5.3 IN diameter x 1 IN tall. Cord type: 3-conductor, 18 AWG black fabric-covered power cord. Cord length: 12 feet.

Light description

Light distribution is mostly downward with the glass shades casting a soft glow horizontally and upwards. The curvature of the shades and their positions limit the direct view of the lamp to reducing glare. Provided with candelabra base sockets for the customer to provide their desired lamps.

Design

Poul Henningsen

Material

Glass shades are three-layered, glossy, opal white, handblown glass 0.2 IN thick with sandblasted inner surfaces. Socket housing is spun aluminum 0.02 IN thick. Socket is phenolic. Shade holder is steel. Canopy is spun aluminum, 0.03 IN thick. Finish is high lustre chrome plating.

Weight

6.722

Other functions

Longer cord lengths.

Finish

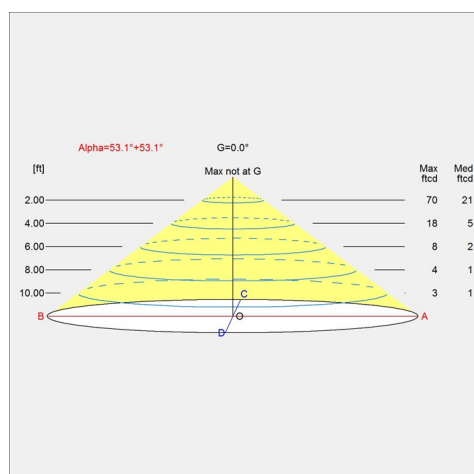
High lustre chrome plated

Voltage

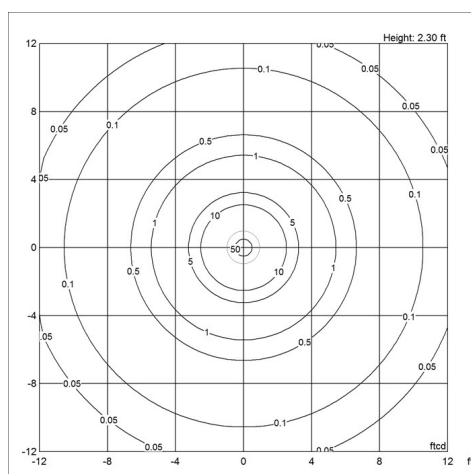
120V

Light distribution diagrams

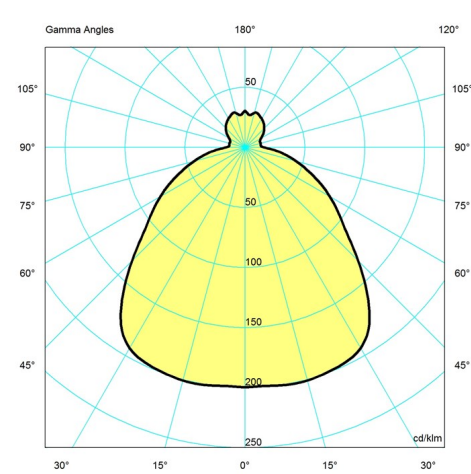
Cartesian



Isolux



Polar



Spare parts & accessories

Product	Variant number
PH 2-1, MIDDLE SHADE, GLASS	5741084940
PH 2-1, LOWER SHADE, GLASS	5741084953
PH 2-1, TOP SHADE, GLASS, TABLE/WALL	5741084937
PH 2-1, SPRINGHOLDER W/SPRINGS	5741086333