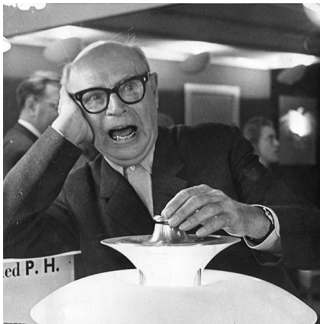


# PH 4/3 PENDANT

The fixture is designed based on the principle of a reflective three-shade system, which directs the majority of the light downwards. The shades are made of metal and painted white to ensure uniform, comfortable light distribution.



## Poul Henningsen

Poul Henningsen was born in Copenhagen by the famous Danish writer Agnes Henningsen. He never graduated as an architect, but studied at The Technical School at Frederiksberg, Denmark from 1911-14, and then at Technical College in Copenhagen from 1914-17.



## Product info

### Information

Electrical: System Wattage: 15W LED Wattage: 14 W Delivered lumens: 414 Efficacy: 27.6 lm/W Certifications: cULus, Dry Location Protection class IP20 Controllability: Phase dimming Actual performance dependent upon screw-base lamp used.

### Mounting

Canopy: White. Cord type: 3-conductor, 18 AWG white PVC power cord. Cord length: 12'.

### Finish

White, powder coated.

### Materials

Shades: Spun aluminum.

### Sizes and weight

Width x Height x Length (in.) | 15.7 x 7.9 x 15.7 Max 2.7 lbs

### Compliance

cULus, Dry location.

### Light source

A-19/medium

### Information

Electrical:

System Wattage: 15W

LED Wattage: 14 W

Delivered lumens: 414

Efficacy: 27.6 lm/W

Certifications:

cULus, Dry Location

Protection class IP20

Controllability: Phase dimming

Actual performance dependent upon screw-base lamp used.

## Related products

PH 4/3 Table

## Product variants

Light source	Voltage frequency
A-19/medium	120V

# Product description

PH 4/3 Pendant is one of the iconic fixtures recognized throughout the world. It is a medium scale pendant of gently sloped metal shades with a lustrous metal socket housing on top. The iconic design is based on the principle of a reflective three-shade system, which directs the majority of the light downwards. The shades are aluminum with matte white finish, giving a soft and uniform light distribution. Part of a family including indoor and outdoor products.

---

## Mounting

Mounts onto a 4 inch octagonal outlet box. Canopy: White, flat cone profile, 5.3 IN diameter x 1 IN tall. Cord type: 3-conductor, 18 AWG white fabric-covered power cord. Cord length: 12 feet.

---

## Light description

Light distribution is downward. The curvature of the shades and their positions combined with a bottom metal plate positioned inside the smallest shade limit viewing of the lamp to reduce glare. Provided with a medium base socket for the customer to provide their desired lamp.

---

## Design

Poul Henningsen

---

## Material

Shades: spun aluminum, 0.06 IN thick. Vertical struts: nickel-plated steel. Canopy is spun aluminum, 0.03 IN thick. Standard finish are matte surface powder coat with minimum 2 mils thickness in white. Bottom shade has a wet painted interior of light yellow.  
White classic matte

---

## Weight

2.74

---

## Other functions

Longer cord lengths.

---

Finish

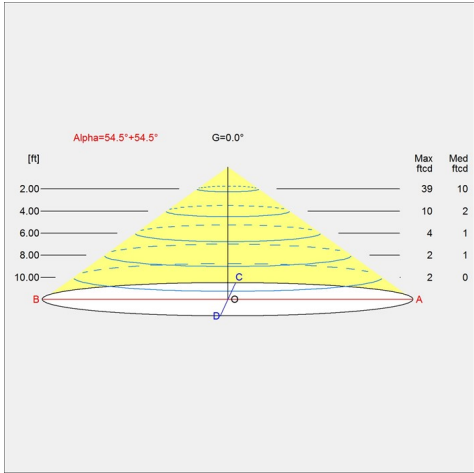
White

Voltage

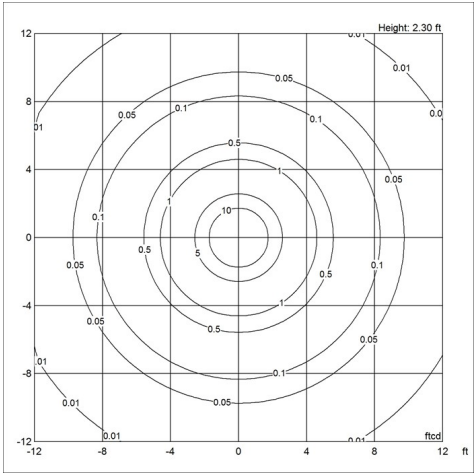
120V

Light distribution diagrams

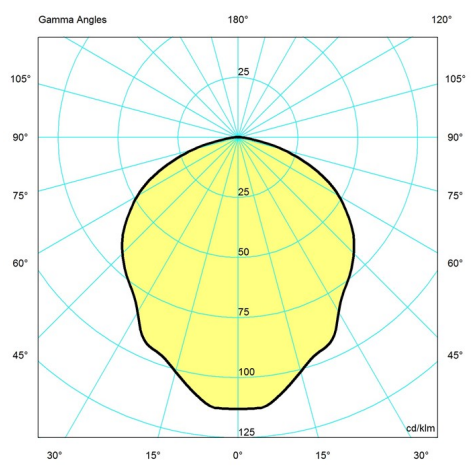
Cartesian



Isolux



Polar



Spare parts & accessories

Product	Variant number
PH 4-3, COVER PLATE, WHITE	5741086841
PH 4-3, COVER PLATE, WHITE NEW	5741087552
PH 4-3, COVER PLATE, ORANGE, F/OLD VER.	5741480997