

ISTRUZIONI DI MONTAGGIO

INSTALLATION INSTRUCTION
INSTALLATIONSANLEITUNG
INSTRUCTIONS D'INSTALLATION
INSTRUCCIONES DE MONTAJE

تعليمات التركيب



PICCHIO

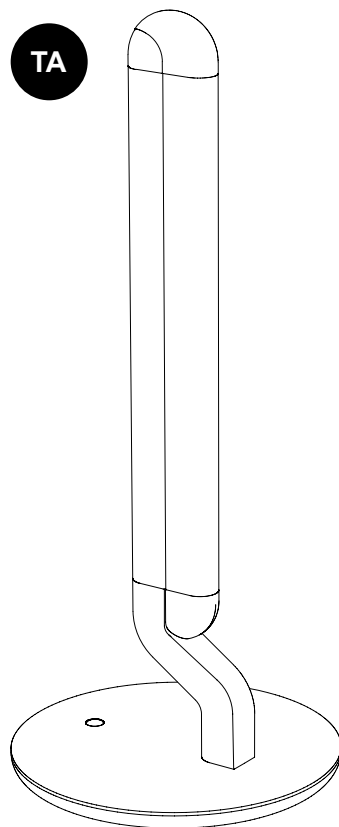
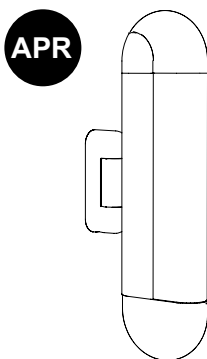
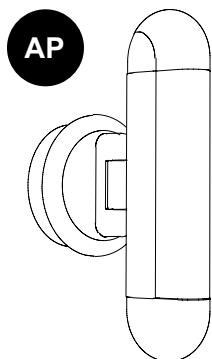
DESIGN BY: **ALESSANDRO MUNGE**



AP APPLIQUE - APPLIQUE

APR APPLIQUE REMOTE - APPLIQUE REMOTE

TA TAVOLO - TABLE



AVVERTENZE

CAUTIONS
WARNUNG
PRECAUTIONS
PRECAUCIONES

تنبيهات



1. Staccare la linea elettrica prima della installazione e di ogni intervento di manutenzione.

Switch-off the power supply before any installation and maintenance operations.

Die Stromzufuhr muss vor der Installation/Wartung ausgeschaltet werden.

Les Couper la source d'alimentation avant toute installation et opération d'entretien.

No efectuar la conexión de la lámpara con la tensión general activada.

قد تؤدي التعديلات أو العبث بالمنتج وعدم الالتزام بالتعليمات المذكورة إلى جعل الجهاز خطيراً.

2. L'installazione deve essere effettuata da personale qualificato secondo la normativa elettrica vigente.

Installation must be carried out only by qualified personnel according to safety norms and local regulations.

Die Installation muss nach den gültigen Sicherheitsvorschriften durch einen konzessionierten Elektroinstallateur erfolgen.

L'installation doit être réalisée par un électricien qualifié en respectant les prescriptions en vigueur.

La instalación debe ser realizada por una persona cualificada y de acuerdo a la normativa vigente.

يجب أن يتم التركيب بواسطة فنيين مؤهلين وفقاً للتشريعات الكهربائية السارية.

3. Utilizzare questo apparecchio a tensione e frequenza indicate nella tabella.

Use this light fixture at the rated voltage and frequency as indicated on the specification table.

Die Leuchte darf nur mit der angegebenen Spannung und Frequenz betrieben werden.

Respecter les prescriptions de tension et de fréquence indiquées dans le tableau final.

Utilice esta lámpara a la tensión y frecuencia indicadas en las instrucciones.

استخدم هذا الجهاز عند الجهد الكهربائي والتردد المحددين في الجدول.

4. Queste istruzioni di montaggio devono essere conservate dal responsabile dell'installazione e manutenzione dell'apparecchio.

This installation manual must be retained by the person responsible for the installation and maintenance of the product.

Bewahren Sie diese Gebrauchsanweisung für den verantwortlichen Benutzer / Wartungstechniker auf.

Gardez cette instruction pour l'utilisateur / technicien de maintenance.

Estas instrucciones deben ser conservadas por el responsab

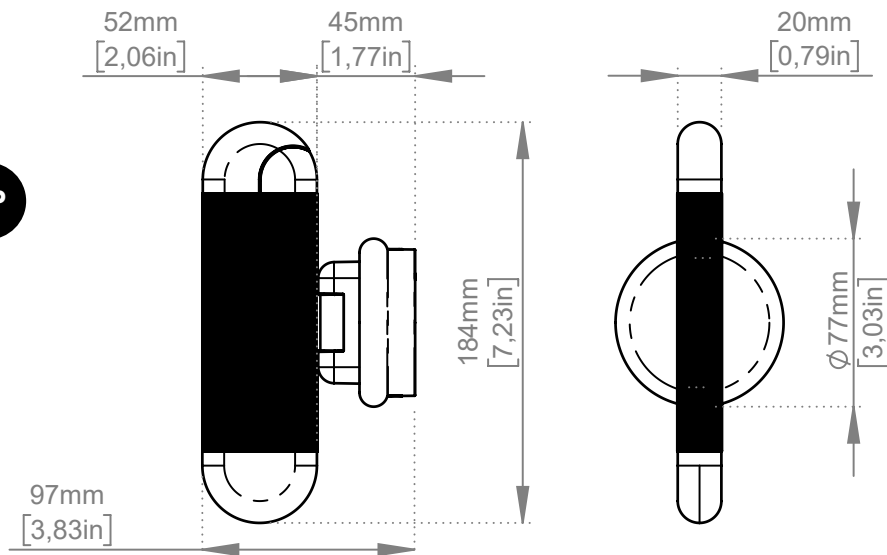
يجب الاحتفاظ بهذه التعليمات بواسطة المسؤول عن تركيب وصيانة الجهاز.

DIMENSIONI

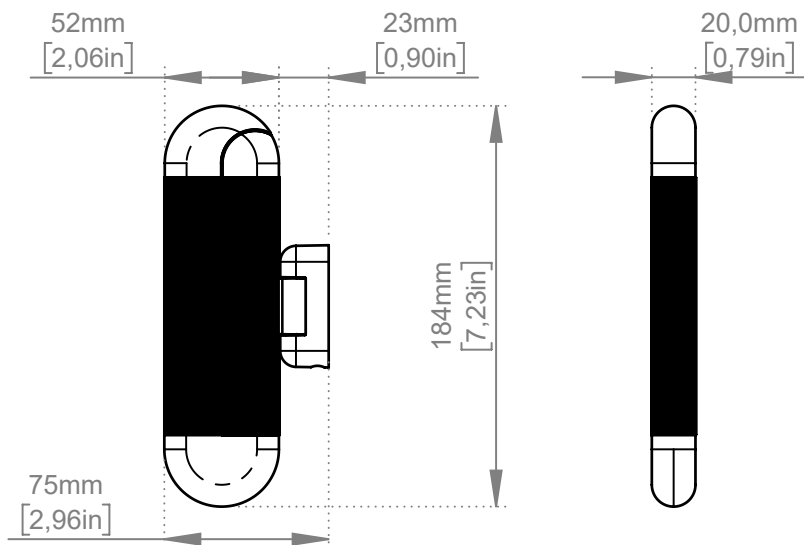
DIMENSIONS
ABMESSUNGEN
DIMENSIONS
DIMENSIONES

الأبعاد

AP



APR



CARATTERISTICHE

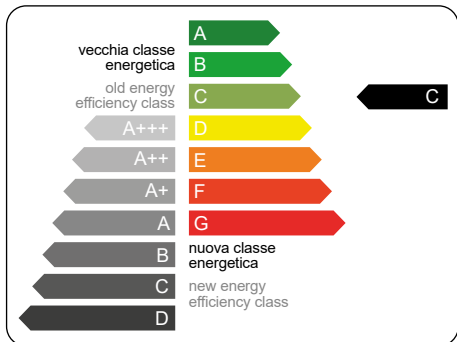
SPECIFICATION
BESCHREIBUNG
CARACTERISTIQUES
ESPECIFICACIONES
المواصفات

DIMENSIONI | DIMENSIONS

MOD.	L (mm)	H (mm)	D (mm)	W (kg)
PICCHIO AP	97	184	77	0.390
PICCHIO REMOTE	75	184	20	0.270
PICCHIO TA	461	412	180	2.320

SPECIFICHE ILLUMINOTECNICHE | LIGHTING SPECIFICATIONS

MOD.	mA	f (Hz)	W	Lm	°K	CRI	h
LED	700	50-60	3	500	3000	>90	30.000



IP20



INSTALLAZIONE

INSTALLATION

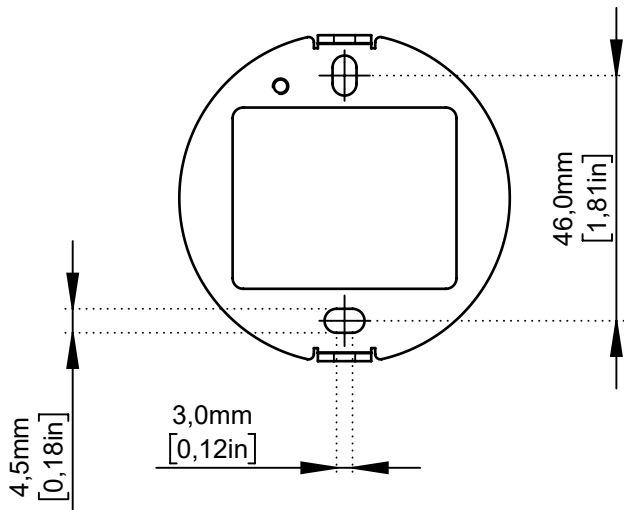
MONTAGE

INSTALLATION

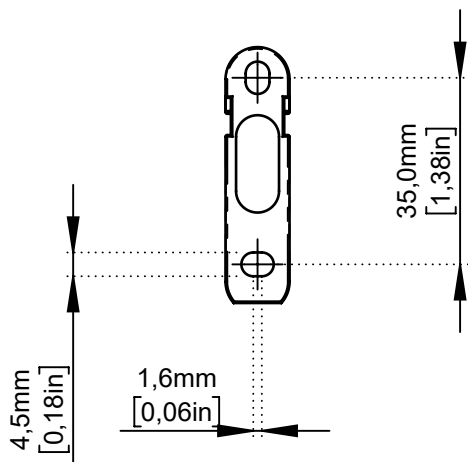
INSTALACION

التثبيت

AP



APR



INSTALLAZIONE

INSTALLATION

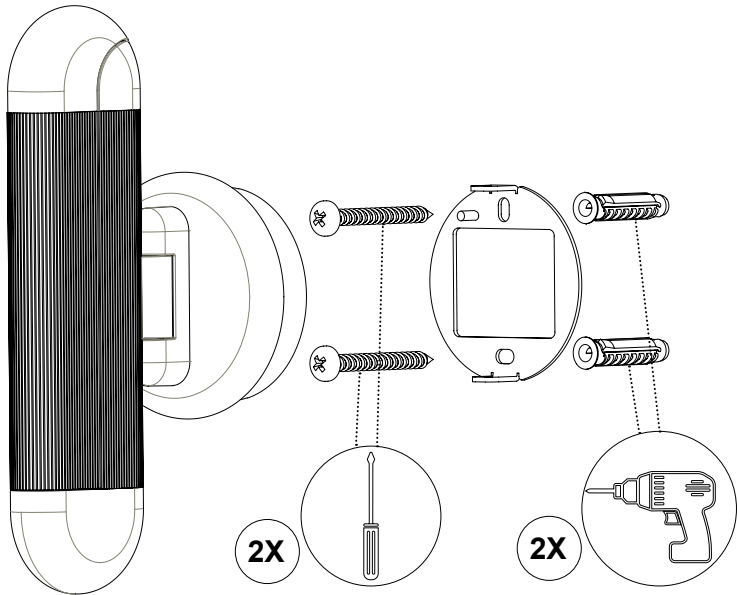
MONTAGE

INSTALLATION

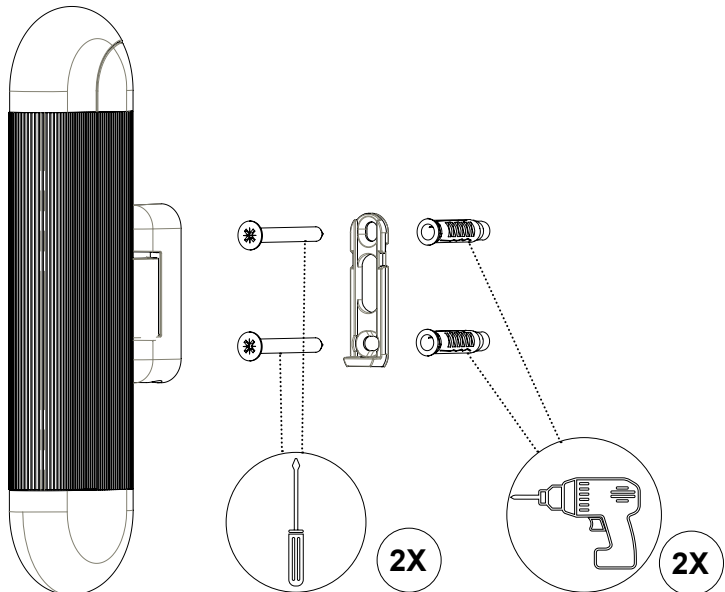
INSTALACION

التثبيت

AP

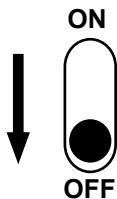


APR



CONNESSIONE

CONNECTION
VERBINDUNG
CONNEXION
CONEXIÓN
الاتصال



STACCARE LA CORRENTE

SWITCH OFF
AUSSCHALTEN
INTERRUPTEUR OFF
INTERRUPTOR APAGADO
إيقاف التشغيل

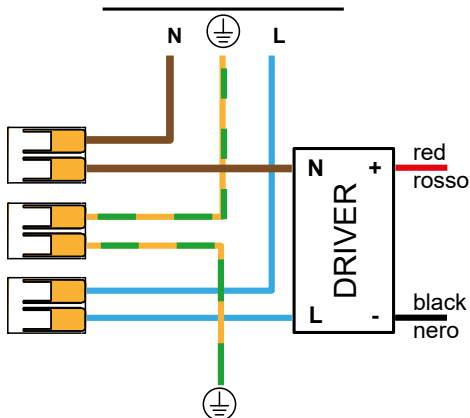


AP

APR

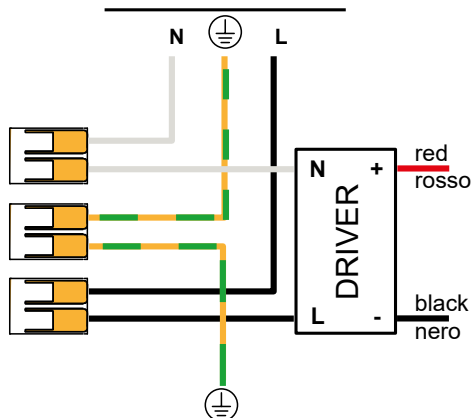
220V

REMOTO
REMOTE



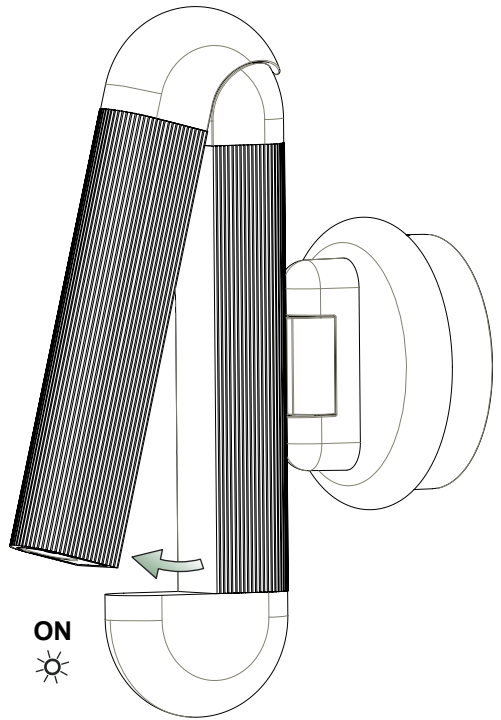
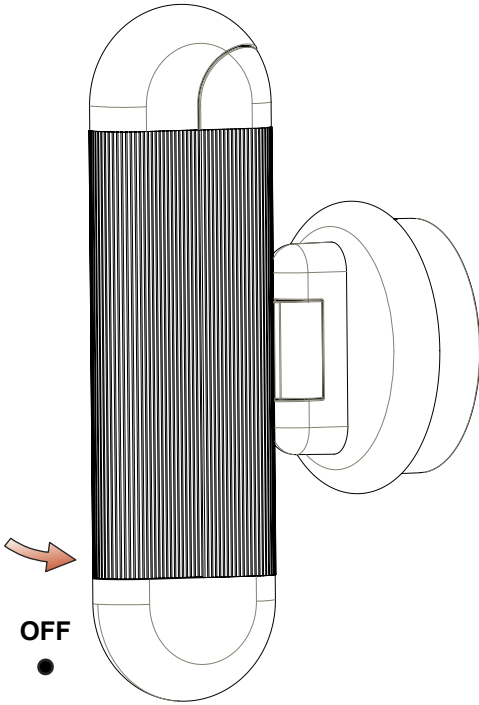
110V

REMOTO
REMOTE



SPECIFICHE DRIVER
DRIVER SPECIFICATIONS
TREIBER-SPEZIFIKATIONEN
SPÉCIFICATIONS DU CONDUCTEUR
ESPECIFICACIONES DEL CONTROLADOR

مواصفات برنامج التشغيل



INSTALLAZIONE

INSTALLATION

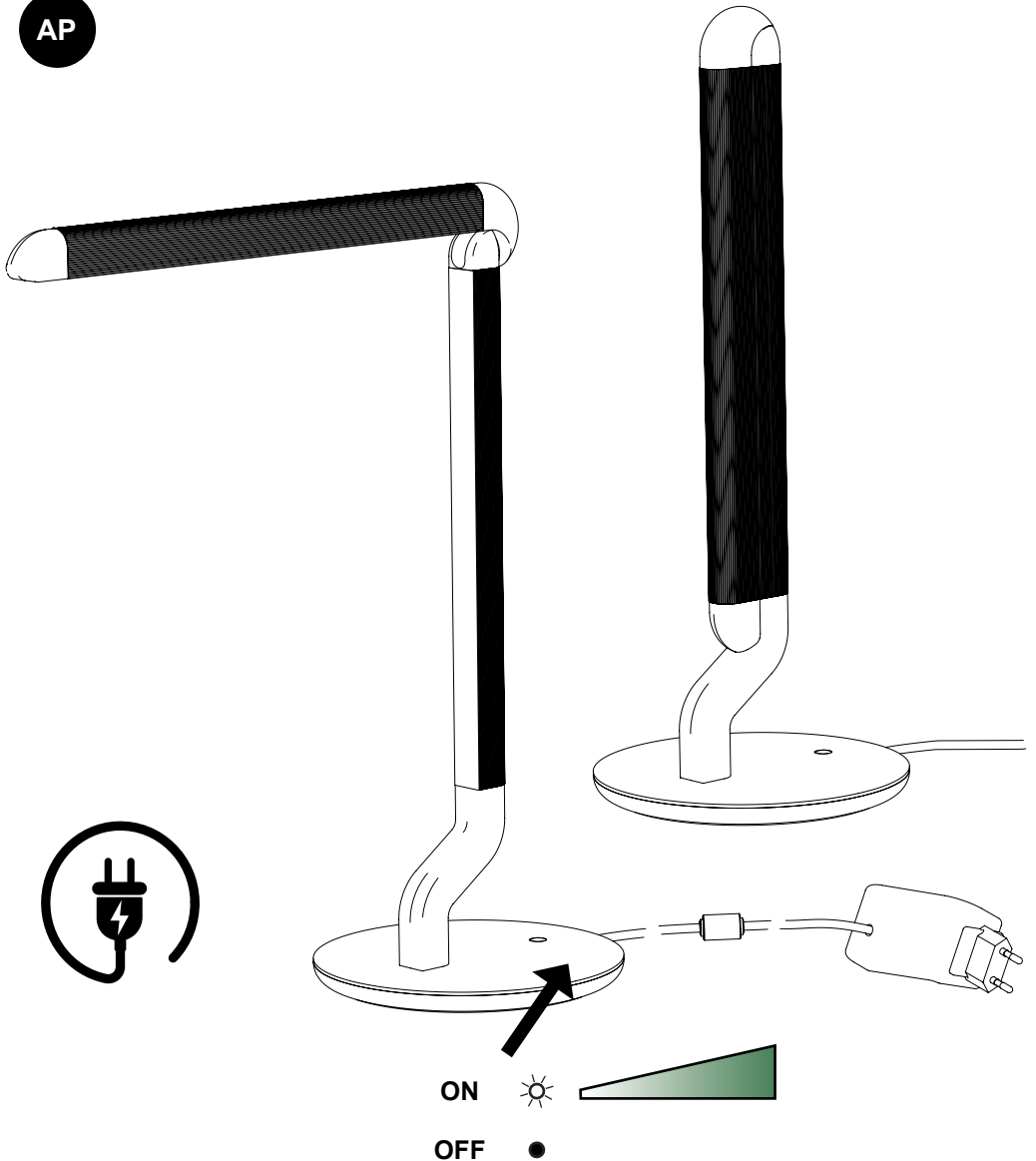
MONTAGE

INSTALLATION

INSTALACION

التثبيت

AP



DOCUMENTAZIONE AGGIUNTIVA

ADDITIONAL DOCUMENTATION
ZUSÄTZLICHE DOKUMENTATION
DOCUMENTATION SUPPLÉMENTAIRE
DOCUMENTACIÓN ADICIONAL

وثائق إضافية



COLLEZIONE
COLLECTION
KOLLEKTION
COLLECTION
COLECCIÓN

مجموعة



SITO WEB CONTARDI
CONTARDI WEBSITE
CONTARDI-WEBSITE
SITE WEB CONTARDI
SITIO WEB CONTARDI

موقع ويب كونتاردي



Contardi Lighting Srl

Via A. Manzoni, 134/140
20811 Cesano Maderno – MB Italy