

SABER SUSPENSION, 0.8" ROUND

24VDC, OUTDOOR/WET LOCATION, TRUCOLOR™ RGBTW

ASSEMBLED IN AMERICA | US PATENT PENDING

REV 01.16.25



DESCRIPTION

Visually stimulating and housed within an unconventional silicone lens, PureEdge's Flexible Saber Line is Tension hung offering flexible installation and conceptual yet functional design. The SCS8 bends Up and Down giving it the unique ability to traverse open spaces from wall to wall, wall to ceiling, or floor to ceiling. The 0.75" wide round lens offers superior color quality and performance while creating uniform illumination without pixelation. Saber is an IP67 rated wet location system featuring watertight barrel connections. System includes a pair of turnbuckles and aircraft cable. Saber is offered with the 5W5 and 5W7 TruColor™ RGBTW light engine. Pure Smart TruColor™ technology uses five channels of tunable LEDs, composed of RGBTW red, blue, green, and Tunable White (1500K-6500K). With our precision-engineered, proprietary color mixing, we produce one of the widest, most accurate spectrums available, giving our customers access to the warm glow of the sunset (1500K-2400K golden hour) to the pure white light of the mid-day sun (5700K) and everything in between. Dynamic Color Changing functionality provides millions of possibilities for intricate customization, rich saturated secondary colors, and unprecedented ease of installation, making RGBTW the ideal choice for residential and commercial applications. Click here for all [Other Color Temperatures](#). Remote 24VDC power supplies are required and ordered separately. Includes a 5-year pro-rated warranty. For custom quotes and layout assistance, send your drawings and ideas to our design team: design@PureEdgeLighting.com.

REMOTE PSBR POWER SUPPLIES & BRIDGEBOXES, DIMMERS & CONTROLS (SOLD SEPARATELY)

24VDC, Class 2 wiring

- [Home Integration Solutions](#)
- Pure Smart™ WiZ Pro [Power Supplies](#) & [Smart Controls](#)

For quick & easy reference, plus the most up-to-date pricing, use our [Saber Suspension Configurator](#)



LAMP

- TruColor™ RGBTW Red, Green, and Blue with Tunable White (1500K-6500K)

AVERAGES AT 2000-5000K

- Average CRI: 90+
- Average Duv: +0.005
- Average R9: 80.1, RG: 100.9, RF:92.7
- Average Life: 50,000hours

SPECIFICATIONS

LUMEN PERFORMANCE	299lm/ft 7W @3000K
DIMENSIONS	Height: 1.12" Width: 0.66" (TOP) 0.75" (BOTTOM)
INPUT	24VDC with 5" leads
POWER SUPPLIES	24VDC, 96 watt Class 2 PSBR power supply TruColor™ RGBTW is optimized for use with the WiZ Pro Wi-Fi based smart control system. For more information please visit the respective power supply product pages.
MAXIMUM LENGTH	Power Feed at one end: S5W5–Pure Smart™ WiZ Pro: 20ft, S5W7–Pure Smart™ WiZ Pro: 12ft Power Feed at both ends: S5W5–Pure Smart - WiZ Pro: 40ft S5W7 - Pure Smart - WiZ Pro: 24ft
INCREMENTS	1FT
MATERIAL	UV Resistant PVC
OPERATING TEMPERATURE	-40° F (-40° C) to 122° F (+50° C)
AVERAGE LED LIFE	50,000 hrs
WARRANTY	5 Year pro-rated
COMPLIANCE	Outdoor Wet Location with Water Tight Barrel Connectors IP67 Rated, ETL listed

POWER FEED AT ONE END

System	Viewing Angle Model Shape	Wattage	Length in Feet	Color Temperature	Input Wire	Output Wire	Environment
FN	SCS8	5W5	20FT	TC	E	CA	W
FN Flex Neon 24V	SCS8 Suspension Saber .8" bends up/ down. Includes suspension aircraft cable and turnbuckles. Order power supply and canopy separately.	5W5 5 watts RGB & 5 watts Tunable White 5W7 5 watts RGB & 7 watts Tunable White	(5W) 1-20ft with power feed at one end (7W) 1-12ft with power feed at one end	TC TruColor RGBTW Red, Green, Blue + Tunable White	E End Power Input Wire	CA Cap at end, no feed through	W Outdoor wet location Barrel Connector cable leads

POWER FEED AT BOTH ENDS

System	Viewing Angle Model Shape	Wattage	Length in Feet	Color Temperature	Input Wire	Output Wire	Environment
FN	SCS8	5W5	20	TC	E	E	W
FN Flex Neon 24V	SCS8 Suspension Saber .8" bends up/ down. Includes suspension aircraft cable and turnbuckles. Order power supply and canopy separately.	5W5 5 watts RGB & 5 watts Tunable White 5W7 5 watts RGB & 7 watts Tunable White	(5W) 21-40ft with power feed at both ends (7W) 13-24ft with power feed at both ends *Lengths surpassing 26" may have a slight sag	TC TruColor RGBTW Red, Green, Blue + Tunable White	E End Power Input Wire	E End Wire Lead Out	W Outdoor wet location Barrel Connector cable leads

PROJECT		FIXTURE TYPE		DATE	
---------	--	--------------	--	------	--

SABER SUSPENSION, 0.8" ROUND

24VDC, OUTDOOR/WET LOCATION, TRUCOLOR™ RGBTW

REV 01.16.25

NOMINAL DELIVERED LUMENS

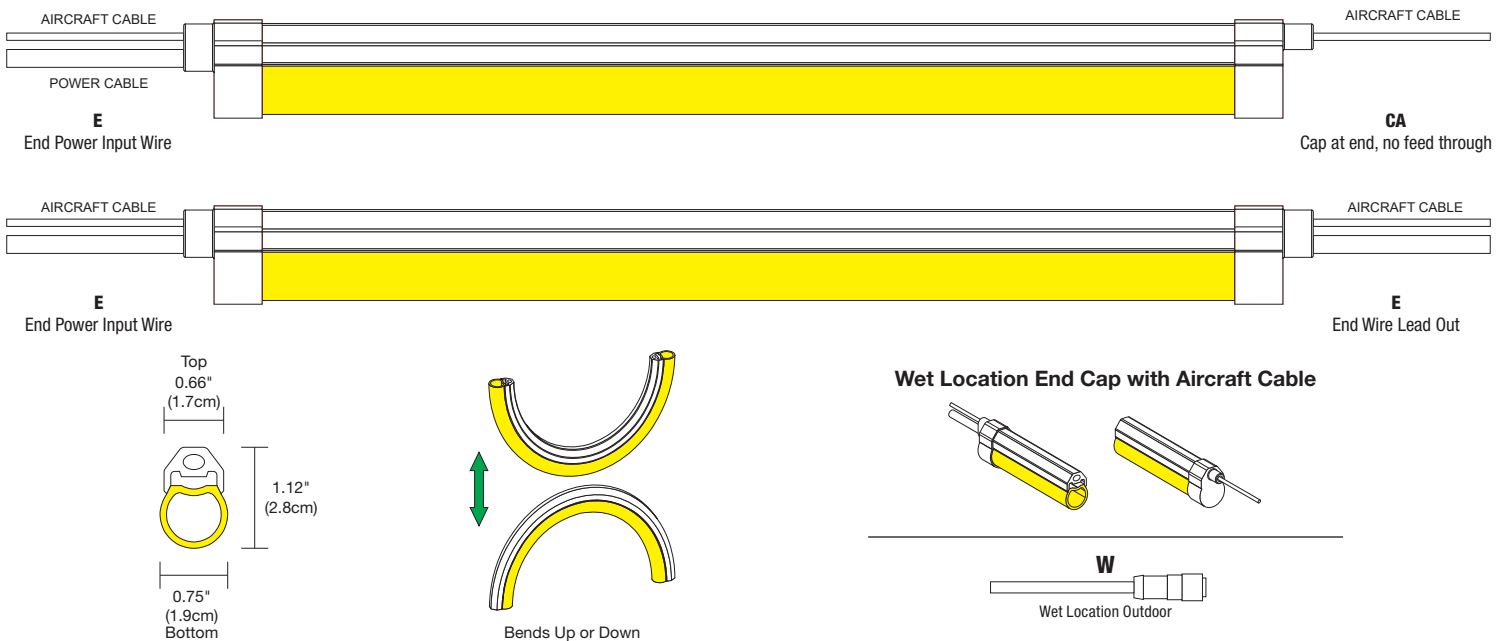
DESCRIPTION	5W5 5W RGB & 5W TUNABLE WHITE										5W7 5W RGB & 7W TUNABLE WHITE									
WATTS PER FOOT	5W Tunable White										7W Tunable White									
COLOR TEMPERATURE	20K	22K	24K	27K	30K	35K	40K	57K	65K		20K	22K	24K	27K	30K	35K	40K	57K	65K	
LUMENS PER FOOT (lm/ft)	106	177	197	203	206	214	233	178	152		131	243	285	294	299	311	307	195	165	
LUMENS PER WATT (lm/w)	39	39	45	48	48	49	56	60	63		39	63	46	49	49	50	53	57	55	
CRI	91.8	93.8	94.5	94.9	95.5	96.9	97.2	92.1	89.8		93.9	96.2	96.6	96.8	97.2	96.2	95	93.7	89.9	
Duv	-0.004	-0.0012	-0.0034	-0.0058	-0.0055	-0.0033	-0.0014	-0.0049	-0.0063		-0.002	0	-0.0008	-0.0032	-0.0022	-0.0006	-0.0002	-0.0031	-0.0056	
Rf	91	93	94	94	95	94	94	92	90		92	93	95	95	95	95	94	92	91	
Rg	105	101	103	105	104	102	100	102	103		104	100	102	103	103	101	100	102	103	
R9	90	90	90	94	97	97	91	81	70		91	90	90	94	95	93	93	79	67	
R13	92	94	95	95	94	96	99	90	87		95	100	100	99	100	98	97	93	88	
R15	99	99	99	98	97	97	97	89	85		97	93	94	97	97	96	94	92	85	
WATTS/FOOT	2.7	4.55	4.35	4.25	4.25	4.35	4.2	2.95	2.4		3.35	3.85	6.15	5.95	6.15	6.15	5.84	3.45	3	

LENGTH LOAD CHARTS: To determine the necessary wire gauge use our [Voltage Drop Calculator](#).

S5W5 WATTS PER FOOT			
Length In Feet	RGB Wattage	Tunable White Wattage	WIZ Pro Wattage
1	5	5	5
2	10	10	10
3	15	15	15
4	20	20	20
5	25	25	25
6	30	30	30
7	35	35	35
8	40	40	40
9	45	45	45
10	50	50	50
11	55	55	55
12	60	60	60
13	65	65	65
14	70	70	70
15	75	75	75
16	80	80	80
17	85	85	85
18	90	90	90
19	95	95	95
20	100	100	100

S5W7 WATTS PER FOOT			
Length In Feet	RGB Wattage	Tunable White Wattage	WIZ Pro Wattage
1	5	7	7
2	10	14	14
3	15	21	21
4	20	28	28
5	25	35	35
6	30	42	42
7	35	49	49
8	40	56	56
9	45	63	63
10	50	70	70
11	55	77	77
12	60	84	84

DRAWINGS: Saber Line SCS8



PROJECT		FIXTURE TYPE		DATE	
---------	--	--------------	--	------	--

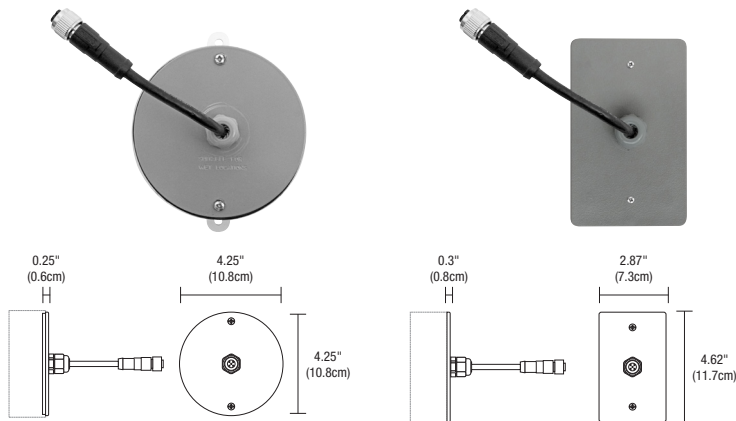


FLEX NEON ACCESSORIES AND J-BOXES

24VDC, OUTDOOR/WET LOCATION, TRUCOLOR™ RGBTW



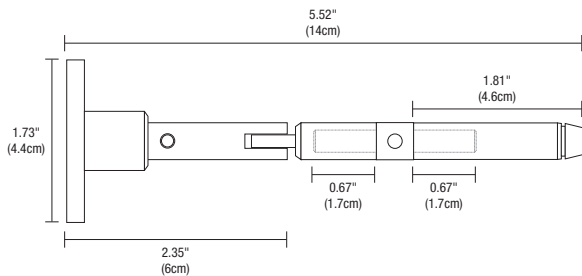
REV 01.16.25



CANOPY (ORDER SEPARATELY)

Outdoor canopy with 8ft outdoor barrel connector power feed, may be cut on job site.

System	Type	Canopy	Finish
OC8P	CFX-6C	RD	ZN
OC8P Outdoor Canopy with 8' outdoor power cable	CFX-6C Flexible 6 Conductor Wire Cable with Barrel Connector	RD Round Cover, 1 gauge 4.125" RE Rectangle Cover, 1 gauge 2.8" x 4.5"	ZN Zinc



PAIR OF TURNBUCKLES AND AIRCRAFT CABLE (INCLUDED)

The Slim-Profile Turnbuckles hold the tension of the aircraft cable running through the silicone Saber tube with LED strip. 6' stainless steel aircraft cable included.

Product	Finish
SABL	SA
SABL Saber Line Turnbuckle	SA Satin Aluminum

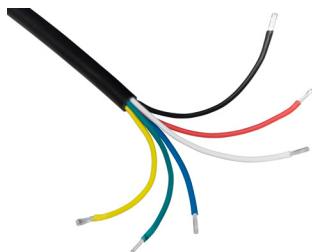
AIRCRAFT CABLE (INCLUDED WITH AN EXTRA 6')

Custom cable length on request



Product	Type	Length
ACBL	SAB	50FT
ACBL Aircraft Cable for Saber	SAB Saber	10' to 100' lengths

OUTDOOR EXTRA PARTS



WET AND DAMP LOCATION CABLE ORDER PER FOOT

Our Wet Location, 6 Conductor, 14 Gauge Cable is a durable and adaptable cable suitable for transmitting power, control, and switching in indoor and outdoor wet and damp environments. Cable sold by the foot, simply specify the length needed by the foot. Keep within 50 ft between fixture and power supply. Cable sold by the foot, simply specify the length needed by the foot.

Product	Gauge	Cable
OC	14G	6C
OC Outdoor Cable	14G 14 Gauge	6C 6 Conductor

PROJECT		FIXTURE TYPE		DATE	
---------	--	--------------	--	------	--



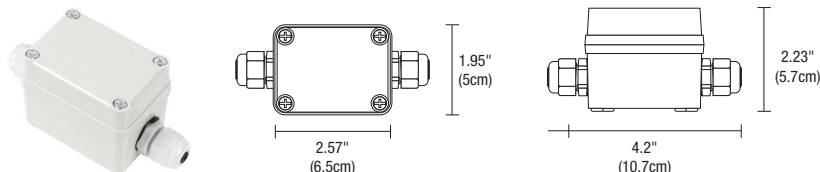
FLEX NEON ACCESSORIES AND J-BOXES

24VDC, OUTDOOR/WET LOCATION, TRUCOLOR™ RGBTW

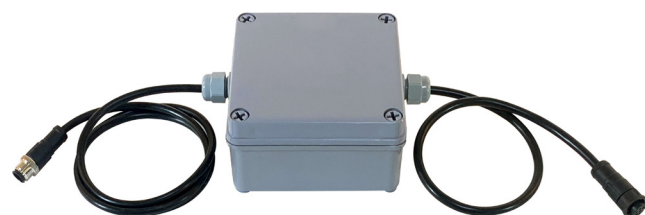
OUTDOOR EXTRA PARTS (CONT'D)

WET LOCATION JUNCTION BOX

Wet-rated low voltage Splice Box with connectors.

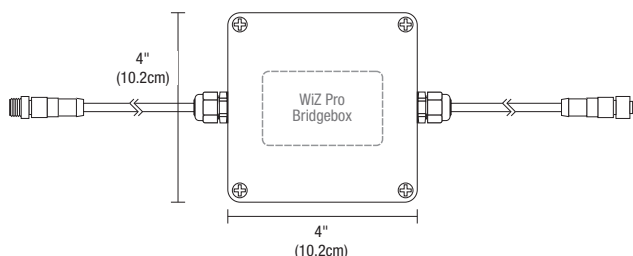


Product	Type	Option
2RE	JBOX	W
2RE 2" Rectangle	JBOX Junction Box	W Wet Location



PURE SMART WET LOCATION JUNCTION BOX WITH 8FT POWER CABLE AND WIZ PRO UR BRIDGEBOX

This watertight Junction Box is especially designed for lighting in wet and damp locations. The Junction Box comes standard with a 8ft of outdoor cable and both male and female barrel connectors providing easy, safe, and reliable connections for 24V low voltage luminaires. Included with the Junction Box is one WIZ Pro type Bridgebox allowing for 5 Channel wireless control of the TruColor RGBTW luminaire. This box is approved for indoor and outdoor usage and complies with all the requirements of UL1241 and the National Electric Code.



Product	Type	Wattage	Controls	Type	Option	System
BR	JBC	96W	WZ	TC5W5	W	SB
BR Bridgebox for LED Soft Strip and Flex Neon	JBC Outdoor Junction Box with two Barrel Connectors, 4 conductor input and 6 conductor output.	96W 96 Watts	WZ Wiz Connected Bridgebox Included	TC5W5 5 Watts RGB & 5 Watts Tunable White TC5W7 5 Watts RGB & 7 Watts Tunable White	W Wet Location	SB Saber



POWER CABLE CONNECTOR WET LOCATION

The flexible power cable connector is designed to work in outdoor environments for safe and reliable connections. This Flexible Connector is easy to install and configure, helping you create innovative lighting designs in an outdoor commercial or residential space.



Product	Type	Size	Conductor	Option
SS	CFX	16IN	6C	W
SS Soft Strip and Flex Neon	CFX Flexible 4 Wire Connector	16IN 16" 96IN 96"	6C 6 Conductor	W Wet Location

PROJECT		FIXTURE TYPE		DATE	
---------	--	--------------	--	------	--

PURE SMART™ Wi-Fi 120V ROOM CONTROLLER

CONNECTED BY WiZ PRO



DESCRIPTION:

The Pure Smart™ Wi-Fi Room Controller works with any WiZ Connected Smart fixtures/lamps. The Room Controller grants independent adjustment of both color temperature and intensity, as well as scene selection for Single Channel/Static, Tunable White, and TruColor™ RGBTW Fixtures. Four preset scenes can be associated with the room controller via the WiZ App. Custom scenes can be created using multiple layers of light, colors, and can include Pure Smart Wi-Fi Dimmer and Switch as well. No Hub required. Room Controller communicates with fixtures directly on the Local Area Network allowing for control even if the Wi-Fi goes down. Compatible with WiZ Connected fixtures only. For custom quotes and layout assistance, send your drawings and ideas to our design team: design@PureEdgeLighting.com.

OPERATION

Features ON/OFF buttons, CCT and brightness control rockers, and 4 preset/custom scene selections. Maximum output of 600W for hardwired WiZ Connected devices. No load restriction when load wire is not used and devices are connected wirelessly to Room Controller. Communicates with 2.4GHz Wi-Fi only. No Hub Required.

SECURITY

3rd party log-in and cloud security provide a safe and protected connection. WiZ does not store nor share any personal information.

EASY INSTALLATION

The Pure Smart™ Wi-Fi Room Controller installs just like a traditional dimmer. 120V power is all that is needed. Switch leg is optional for CWW-TW-SCENE-WH. This is also offered in a completely wireless version (See Pure Smart Remote Room Controller CWR-TW-SCENE-WH). Compatible with standard gangable boxes. Requires neutral wire. No Hub Required. Single Pole or 3-way compatible. 3-way can be achieved by assigning two room controllers (CWW-TW-SCENE or [CWR-TW-SCENE-WH](#)) to the same target/room/fixture. 3-way can also be achieved with a room controller in combination with the Pure Smart Dimmer ([SWW-DIM-WH](#)), or the Pure Smart Switch ([SWW-SWT-WH](#)) by assigning the dimmer or switch as a target to the room controller.

WiZ APP

The Room Controller is added as an accessory in the WiZ app (Available on iOS or Android) and communicates directly to the WiZ enabled light fixture via direct wi-fi signal on Local Area Network (LAN). Voice control enabled when used in conjunction with Google Assistant, Siri, Alexa, IFTTT, and SmartThings. Grouping, zoning, scheduling, and custom scenes can all be programmed with the WiZ app or WiZ Pro Dashboard.

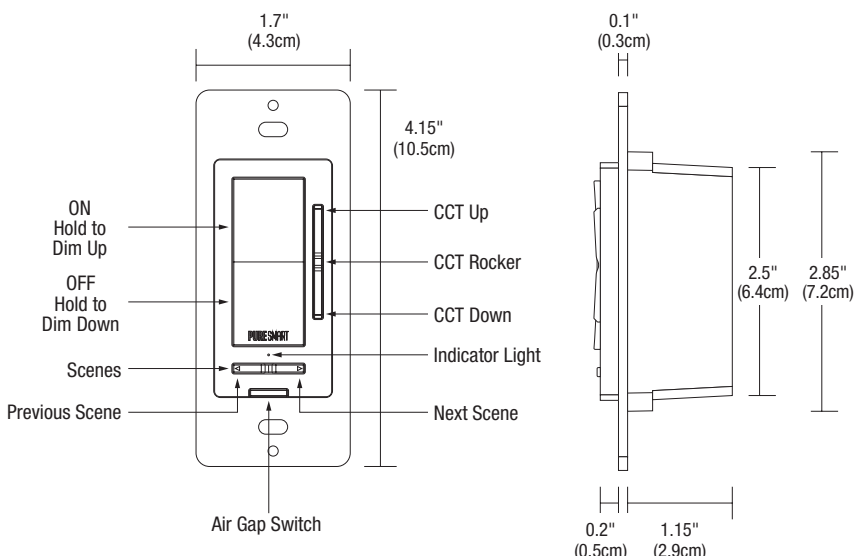
BODY

Durable polycarbonate body, compatible with decorator style wall plate (not included).

SPECIFICATIONS

Approved Location	Dry / Indoor
Input Voltage	120Vac - 60 Hz
Certification	cULus, FCC
Compatible Load(s)	WiZ Connected products only
Maximum Power	600W (Hardwired Loads), No Maximum for Wireless Loads
Output Current	5A
Power Consumption	Relay OFF: 0.07W Soft OFF: 0.79W ON: 0.79W
Dimming	Dims to 3%
Operating Temperature	23°F~113°F (-5°C~45°C)
Wireless Frequency	2.4GHz
Wireless Standard	IEEE 802.11
Warranty	3 Year

Product	Type	Finish
CWW	TW-SCENE	WH
CWW 120V Controller, Wall Mount, WiZ Pro connected	TW-SCENE Tunable White + Scenes	WH White



PROJECT	FIXTURE TYPE	DATE
---------	--------------	------

PURE SMART™ Wi-Fi REMOTE ROOM CONTROLLER

CONNECTED BY WiZ PRO FOR TABLE TOP OR WALL



DESCRIPTION:

The Pure Smart™ Wi-Fi Remote Room Controller works with any WiZ Connected Smart fixtures/lamps. The Remote Room Controller is powered by four AAA batteries (not included) and grants independent adjustment of color temperature and intensity, as well as scene selection for four favorite scenes which are selected and assigned to the room controller in the WiZ App. The four favorited scenes, as with any scene in the WiZ ecosystem, can consist of any combination of products including bulbs, luminaires, or smart controls and can support any combination of color ranges including static white or dimmable white, Tunable White, and Tricolor RGBTW allowing for intricate customization and control. No Hub required. Room Controller communicates with fixtures directly on the Local Area Network allowing for control even if the Wi-Fi goes down. Compatible with WiZ Connected fixtures only. For custom quotes and layout assistance, send your drawings and ideas to our design team: design@PureEdgeLighting.com.

OPERATION

Dimming, CCT control rocker, and a scene control toggle. No load maximum. Communicates with 2.4GHz Wi-Fi only. No Hub Required.

EASY INSTALLATION

The Pure Smart™ Wi-Fi Remote Room Controller is powered by 4 AAA batteries (not included) and is therefore completely wireless. Multiple mounting methods available including to a standard switch box, on the wall with the included drywall anchors or adhesive strip, or kept on a tabletop with the rubber pads that help to keep it stationary. Single Pole or 3-way compatible with Pure Smart Dimmer ([SWW-DIM-WH](#)), Pure Smart Switch ([SWW-SWT-WH](#)), 120V Room Controller ([CWW-TW-SCENE-WH](#)) and another Remote Room Controller. No wires. No hub. Total control.

WiZ APP

The Room Controller is added as an accessory in the WiZ app (Available on iOS or Android) and communicates directly to the WiZ enabled light fixture via direct wi-fi signal on Local Area Network (LAN). Voice control enabled when used in conjunction with Google Assistant, Siri, Alexa, IFTTT, and SmartThings. Grouping, zoning, scheduling, and custom scenes can all be programmed with the WiZ app or WiZ Pro Dashboard.

BODY

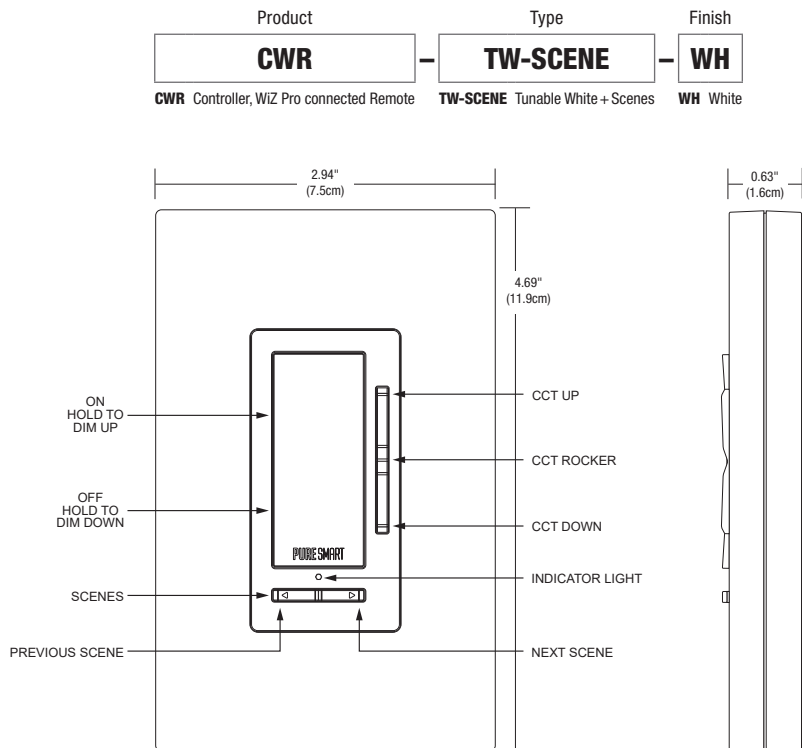
Durable polycarbonate body.

SECURITY

3rd party log-in and cloud security provide a safe and protected connection. WiZ does not store nor share any personal information.

SPECIFICATIONS

Approved Location	Dry / Indoor
Input Voltage	4 AAA batteries (not included)
Certification	cULus, FCC
Compatible Load(s)	WiZ Connected products only
Maximum Power	No Load Maximum
Output Current	5A
Power Consumption	Relay OFF: 0.07W Soft OFF: 0.79W ON: 0.79W
Dimming	Dims to 3%
Operating Temperature	23°F~113°F (-5°C~45°C)
Wireless Frequency	2.4GHz
Wireless Standard	IEEE 802.11
Warranty	3 Year



PROJECT		FIXTURE TYPE		DATE	
---------	--	--------------	--	------	--