

LIGHT CHANNEL 0.6" RECESSED MILLWORK

24VDC RECESSED 5 CHANNEL WIRELESS CONTROL, TRUCOLOR™ RGBTW

DESIGNED BY GREGORY KAY | ASSEMBLED IN AMERICA

REV 05.15.25



DESCRIPTION

Light Channel 0.6" Millwork Recessed System is a made-to-order complete fixture, featuring a minimal profile, Clear or Diffused Lens, optional Louver, and our premier **TruColor™ RGBTW** light engine. 12" to 120". For longer continuous runs, see DIY spec sheet.

FEATURES AND BENEFITS

- TruColor™ LED's achieve an average CRI-Color Rendering Index of 94+ and a Duv of ± 0.0046 in relation to the blackbody curve at any point on the spectrum of tunable white CCT.
- Low voltage up to 100 watt. Class 2 wiring, 24VDC. Junction Box and Pure Smart WiZ Pro Bridgebox (C-1RE4G-WZ-TC5W5-LC sold separately) allow for 5-Channel wireless control of the Light Channel luminaire.
- Power Consumption Options: 5W5 (5 watts/ft total), 5W7 (7 watts/ft total)

LENS OPTIONS

- Clear Lens (**C**) provides maximum illumination use of a 40° transparent clear lens, LEDs diodes will show
- Clear Lens White Louver (**CLW**)
- Clear Lens Black Louver (**CLB**)
- Diffused White Lens (**D**) projects clean lines of light 100° eliminating pixelation
- Diffused Lens White Louver (**DLW**)
- Diffused Lens Black Louver (**DLB**)

AVERAGE PERFORMANCE 2000K-5500K

- Average CRI (5W7): 94+
- Average DUV (5W7): ± 0.0002
- Average R9: 91, Rg: 102, Rf: 93
- Average life: 50,000 hours

INCLUDED COMPONENTS

- 72" of Power Feed Connector (Includes 1 per fixture. Order extra as needed based on your installation requirements)
- Mounting Clips (Included with every 2' of Channel)

ACCESSORIES (SOLD SEPARATELY)

- Mounting Clips (Included with every 2' of Channel)
- 1RE Canopy with 4 Gang J Box and Pure Smart WiZ Pro CV Bridgebox (C-1RE4G-WZ-TC5W5-LC necessary for wireless control)

TRUCOLOR™ RGB & TUNABLE WHITE LIGHT ENGINE

Pure Smart **TruColor™** technology uses five channels of tunable LEDs, composed of **RGBTW** red, blue, green, and Tunable White (**1500K-6500K**). With our precision-engineered, proprietary color mixing, we produce one of the widest, most accurate spectrums available, giving our customers access to the warm glow of the sunset (1500K-2400K golden hour) to the pure white light of the mid-day sun (5700K) and everything in between. **TruColor™** LED's achieve an average CRI-Color Rendering Index of 94+ and a Duv of ± 0.0020 in relation to the blackbody curve at any point on the spectrum of tunable white CCT. Dynamic Color Changing functionality provides millions of possibilities for intricate customization, rich saturated secondary colors, and unprecedented ease of installation, making **RGBTW** the ideal choice for residential and commercial applications. **TruColor™ RGBTW** adds more than just decorative flexibility; it also helps to support a healthy Circadian Rhythm and well-being. Let **TruColor™** transform your space and the people within it. **TruColor™ RGBTW** is optimized for control with WiZ Pro Wi-Fi based smart control system.

LUMEN PERFORMANCE

- **TruColor™ RGBTW** Red, Green, and Blue with Tunable White (**1500K-6500K**)
- 5W5 226LM/FT 5W @3000K
- 5W7 330LM/FT 7W @3000K

REMOTE POWER SUPPLIES*, DIMMERS & CONTROLS (SOLD SEPARATELY)

24VDC, Class 2 wiring

- [Home Integration Solutions](#)
- Pure Smart™ WiZ Pro [Power Supplies](#) & [Smart Controls](#)
- [Pure Smart™ Wi-Fi Controller](#)

Features ON/OFF buttons, CCT and brightness control as well as four preset/custom scenes programmable in the WiZ app. Communicates via 2.4GHz Wi-Fi. No Hub needed. Voice control with Goggle Assistant, Alexa, Siri, Shortcuts, and IFTTT

APPLICATIONS

Indoor only, cove lighting, under cabinet, indirect lighting above cabinets, display lighting, toe kick, and general illumination

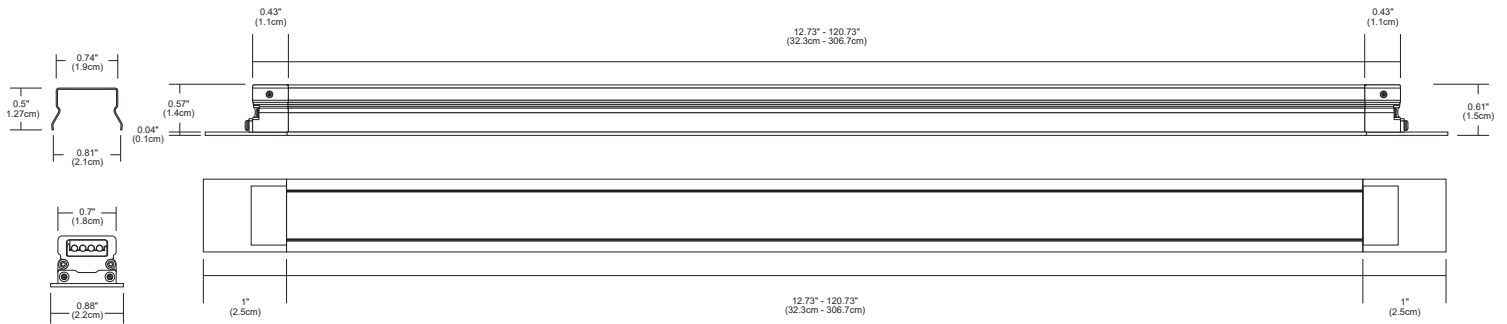
Product	Wattage	Nominal Size	Lens/Color Temperature	Finish
LCMW.6	5W5	60	D TC	SA
LCMW.6 Light Channel .6 Recessed Millwork	5W5 5W5 5 watts RGB, 5 watts Tunable White 5W7 5W7 5 watts RGB, 7 watts Tunable White	12-120 Order in 12" increments up to 120". May be ordered in 3" increments	D Diffused Lens C Clear Lens DLW Diffused Lens with White Louver DLB Diffused Lens with Black Louver CLB Clear Lens with Black Louver CLW Clear Lens with White Louver	TC TruColor™ RGBTW Red, Green, Blue & Tunable White 1500K-6500K SA Satin Aluminum XX Custom Finishes Available

PROJECT		FIXTURE TYPE		DATE	
---------	--	--------------	--	------	--

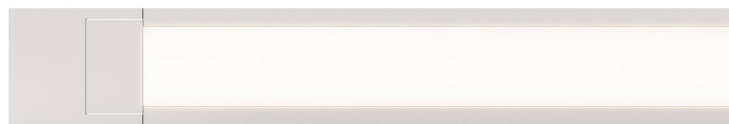
LIGHT CHANNEL 0.6" RECESSED MILLWORK

24VDC RECESSED 5 CHANNEL WIRELESS CONTROL, TRUCOLOR™ RGBTW

REV 05.15.25



INCLUDED COMPONENTS Lens Options and Lamp Data for indoor Light Channel 0.6" Surface Mount



LCMW.6 LIGHT CHANNEL
61° DIFFUSED LENS

White Diffuser Lens projects clean lines of light, eliminating LED dots



LCMW.6 LIGHT CHANNEL
26° CLEAR LENS

Clear Lens provides maximum light levels and will show slight LED dots



LCMW.6 LIGHT CHANNEL
DIFFUSED WHITE LENS WITH WHITE LOUVER



LCMW.6 LIGHT CHANNEL
DIFFUSED LENS WITH BLACK LOUVER



LCMW.6 LIGHT CHANNEL
CLEAR LENS WITH WHITE LOUVER



LCMW.6 LIGHT CHANNEL
CLEAR LENS WITH BLACK LOUVER

FOOT CANDLE CHARTS

5W5	
Distance	Foot Candles
1'	375
2'	94
3'	42
4'	23
5'	15
6'	11
7'	8
8'	6

5W7	
Distance	Foot Candles
1'	600
2'	150
3'	67
4'	38
5'	24
6'	17
7'	12
8'	9

PROJECT		FIXTURE TYPE		DATE	
---------	--	--------------	--	------	--

LIGHT CHANNEL 0.6" RECESSED MILLWORK

24VDC RECESSED 5 CHANNEL WIRELESS CONTROL, TRUCOLOR™ RGBTW

NOMINAL LAMP DATA

DESCRIPTION	LCMW.6 WITH DIFFUSER LENS																	
	5W5 5W RGB & 5W TUNABLE WHITE									5W7 5W RGB & 7W TUNABLE WHITE								
	5W Maximum									7W Maximum								
WATTS PER FOOT	20K	22K	24K	27K	30K	35K	40K	57K	65K	20K	22K	24K	27K	30K	35K	40K	57K	65K
COLOR TEMPERATURE	72	108	132	148	152	161	174	122	112	89	149	191	217	222	234	230	135	122
LUMENS PER FOOT (lm/ft)	72	108	132	148	152	161	174	122	112	89	149	191	217	222	234	230	135	122
LUMENS PER WATT (lm/w)	27	24	30	35	36	37	41	41	41	27	39	31	36	36	38	39	39	38
CRI	91.8	93.8	94.5	94.9	95.5	96.9	97.2	92.1	89.8	93	95	96	97	97	98	97	95	93
Duv	-0.004	-0.0012	-0.0034	-0.0058	-0.0055	-0.0033	-0.0014	-0.0049	-0.0063	-0.0030	0.0002	0.0030	0.0030	0.0030	0.0009	0.0000	0.0030	0.0030
Rf	91	93	94	94	95	94	94	92	90	92	93	95	95	95	95	94	92	91
Rg	105	101	103	105	104	102	100	102	103	104	100	102	103	103	101	100	102	103
R9	90	90	90	94	97	97	91	81	70	91	90	90	94	95	93	93	79	67
WATTS/FOOT	2.7	4.55	4.35	4.25	4.25	4.35	4.2	2.95	2.75	3.35	3.85	6.15	5.95	6.15	6.15	5.84	3.45	3.2

DESCRIPTION	LCMW.6 WITH CLEAR FROSTED LENS																	
	5W5 5W RGB & 5W TUNABLE WHITE									5W7 5W RGB & 7W TUNABLE WHITE								
	5W Maximum									7W Maximum								
WATTS PER FOOT	20K	22K	24K	27K	30K	35K	40K	57K	65K	20K	22K	24K	27K	30K	35K	40K	57K	65K
COLOR TEMPERATURE	85	127	154	173	179	189	203	143	132	105	174	224	254	261	275	269	158	143
LUMENS PER FOOT (lm/ft)	85	127	154	173	179	189	203	143	132	105	174	224	254	261	275	269	158	143
LUMENS PER WATT (lm/w)	31	28	35	41	42	43	48	48	48	31	45	36	43	42	45	46	46	45
CRI	91.8	93.8	94.5	94.9	95.5	96.9	97.2	92.1	89.8	93	95	96	97	97	98	97	95	93
Duv	-0.004	-0.0012	-0.0034	-0.0058	-0.0055	-0.0033	-0.0014	-0.0049	-0.0063	-0.0030	0.0002	0.0030	0.0030	0.0030	0.0009	0.0000	0.0030	0.0030
Rf	91	93	94	94	95	94	94	92	90	92	93	95	95	95	95	94	92	91
Rg	105	101	103	105	104	102	100	102	103	104	100	102	103	103	101	100	102	103
R9	90	90	90	94	97	97	91	81	70	91	90	90	94	95	93	93	79	67
WATTS/FOOT	2.7	4.55	4.35	4.25	4.25	4.35	4.2	2.95	2.75	3.35	3.85	6.15	5.95	6.15	6.15	5.84	3.45	3.2

DESCRIPTION	LCMW.6 WITH WHITE LOUVRE CLEAR FROSTED																	
	5W5 5W RGB & 5W TUNABLE WHITE									5W7 5W RGB & 7W TUNABLE WHITE								
	5W Maximum									7W Maximum								
WATTS PER FOOT	20K	22K	24K	27K	30K	35K	40K	57K	65K	20K	22K	24K	27K	30K	35K	40K	57K	65K
COLOR TEMPERATURE	57	85	103	115	119	126	136	95	88	70	116	149	170	174	183	179	105	95
LUMENS PER FOOT (lm/ft)	57	85	103	115	119	126	136	95	88	70	116	149	170	174	183	179	105	95
LUMENS PER WATT (lm/w)	21	19	24	27	28	29	32	32	32	21	30	24	28	28	30	31	31	30
CRI	91.8	93.8	94.5	94.9	95.5	96.9	97.2	92.1	89.8	93	95	96	97	97	98	97	95	93
Duv	-0.004	-0.0012	-0.0034	-0.0058	-0.0055	-0.0033	-0.0014	-0.0049	-0.0063	-0.0030	0.0002	0.0030	0.0030	0.0030	0.0009	0.0000	0.0030	0.0030
Rf	91	93	94	94	95	94	94	92	90	92	93	95	95	95	95	94	92	91
Rg	105	101	103	105	104	102	100	102	103	104	100	102	103	103	101	100	102	103
R9	90	90	90	94	97	97	91	81	70	91	90	90	94	95	93	93	79	67
WATTS/FOOT	2.7	4.55	4.35	4.25	4.25	4.35	4.2	2.95	2.75	3.35	3.85	6.15	5.95	6.15	6.15	5.84	3.45	3.2

DESCRIPTION	LCMW.6 WITH WHITE LOUVRE DIFFUSED																	
	5W5 5W RGB & 5W TUNABLE WHITE									5W7 5W RGB & 7W TUNABLE WHITE								
	5W Maximum									7W Maximum								
WATTS PER FOOT	20K	22K	24K	27K	30K	35K	40K	57K	65K	20K	22K	24K	27K	30K	35K	40K	57K	65K
COLOR TEMPERATURE	48	72	88	98	102	107	116	81	75	60	99	127	145	148	156	153	90	81
LUMENS PER FOOT (lm/ft)	48	72	88	98	102	107	116	81	75	60	99	127	145	148	156	153	90	81
LUMENS PER WATT (lm/w)	18	16	20	23	24	25	28	28	27	18	26	21	24	24	25	26	26	25
CRI	91.8	93.8	94.5	94.9	95.5	96.9	97.2	92.1	89.8	93	95	96	97	97	98	97	95	93
Duv	-0.004	-0.0012	-0.0034	-0.0058	-0.0055	-0.0033	-0.0014	-0.0049	-0.0063	-0.0030	0.0002	0.0030	0.0030	0.0030	0.0009	0.0000	0.0030	0.0030
Rf	91	93	94	94	95	94	94	92	90	92	93	95	95	95	95	94	92	91
Rg	105	101	103	105	104	102	100	102	103	104	100	102	103	103	101	100	102	103
R9	90	90	90	94	97	97	91	81	70	91	90	90	94	95	93	93	79	67
WATTS/FOOT	2.7	4.55	4.35	4.25	4.25	4.35	4.2	2.95	2.75	3.35	3.85	6.15	5.95	6.15	6.15	5.84	3.45	3.2

DESCRIPTION	LCMW.6 WITH BLACK LOUVRE CLEAR FROSTED																	
	5W5 5W RGB & 5W TUNABLE WHITE									5W7 5W RGB & 7W TUNABLE WHITE								
	5W Maximum									7W Maximum								
WATTS PER FOOT	20K	22K	24K	27K	30K	35K	40K	57K	65K	20K	22K	24K	27K	30K	35K	40K	57K	65K
COLOR TEMPERATURE	32	48	58	65	68	71	77	54	50	40	66	85	96	99	104	102	60	54
LUMENS PER FOOT (lm/ft)	32	48	58	65	68	71	77	54	50	40	66	85	96	99	104	102	60	54
LUMENS PER WATT (lm/w)	12	11	13	15	16	16	18	18	18	12	17	14	16	16	17	17	17	17
CRI	91.8	93.8	94.5	94.9	95.5	96.9	97.2	92.1	89.8	93	95	96	97	97	98	97	95	93
Duv	-0.004	-0.0012	-0.0034	-0.0058	-0.0055	-0.0033	-0.0014	-0.0049	-0.0063	-0.0030	0.0002	0.0030	0.0030	0.0030	0.0009	0.0000	0.0030	0.0030
Rf	91	93	94	94	95	94	94	92	90	92	93	95	95	95	95	94	92	91
Rg	105	101	103	105	104	102	100	102	103	104	100	102	103	103	101	100	102	103
R9	90	90	90	94	97	97	91	81	70	91	90	90	94	95	93	93	79	67
WATTS/FOOT	2.7	4.55	4.35	4.25	4.25	4.35	4.2	2.95	2.75	3.35	3.85	6.15	5.95	6.15	6.15	5.84	3.45	3.2

PROJECT		FIXTURE TYPE		DATE	
---------	--	--------------	--	------	--

LIGHT CHANNEL 0.6" RECESSED MILLWORK

24VDC RECESSED 5 CHANNEL WIRELESS CONTROL, TRUCOLOR™ RGBTW

NOMINAL LAMP DATA (CONT'D)

REV 05.15.25

DESCRIPTION	LCMW.6 WITH BLACK LOUVRE DIFFUSED																	
	5W5 5W RGB & 5W TUNABLE WHITE									5W7 5W RGB & 7W TUNABLE WHITE								
WATTS PER FOOT	5W Maximum									7W Maximum								
COLOR TEMPERATURE	20K	22K	24K	27K	30K	35K	40K	57K	65K	20K	22K	24K	27K	30K	35K	40K	57K	65K
LUMENS PER FOOT (lm/ft)	27	41	50	56	58	61	66	46	42	34	56	72	82	84	89	87	51	46
LUMENS PER WATT (lm/w)	10	9	11	13	14	14	16	16	15	10	15	12	14	14	14	15	15	14
CRI	93	94	95	93	96	96	94	93	93	93	94	96	95	96	96	94	93	93
Duv	-0.0030	-0.0005	-0.0021	-0.0037	-0.0041	-0.0029	-0.0006	-0.0002	0.0000	-0.0030	0.0003	0.0020	0.0002	0.0001	0.0020	0.0025	0.0000	0.0076
Rf	91	93	93	93	93	93	91	91	87	90	93	93	93	93	93	91	91	91
Rg	93	98	101	102	102	100	99	100	96	99	98	101	102	102	100	98	100	99
R9	79	64	69	75	78	76	69	95	95	79	75	68	74	76	76	68	94	95
WATTS/FOOT	2.7	4.55	4.35	4.25	4.25	4.35	4.2	2.95	2.75	3.35	3.85	6.15	5.95	6.15	6.15	5.84	3.45	3.2

LENGTH CHARTS: Actual lengths for Light Channel .6 Recessed Millwork

5W5, 5W7 TRUCOLOR™ RGBTW					
Ordering Code (NOMINAL LENGTH)	Actual Length	5W5 (TOTAL WATTS)	5W5 (TOTAL LUMENS AT 30K)	5W7 (TOTAL WATTS)	5W7 (TOTAL LUMENS AT 30K)
12	12.85	5	152	7	222
15	15.85	6	190	9	278
18	18.85	8	228	11	333
21	21.85	9	266	12	389
24	24.85	10	304	14	444
27	27.85	11	342	16	500
30	30.85	13	380	18	555
33	33.85	14	418	19	611
36	36.85	15	456	21	666
39	39.85	16	494	23	722
42	42.85	18	532	25	777
45	45.85	19	570	26	833
48	48.85	20	608	28	888
51	51.85	21	646	30	944
54	54.85	23	684	32	999
57	57.85	24	722	33	1055
60	60.85	25	760	35	1110
63	63.85	26	798	37	1166
66	66.85	28	836	39	1221
69	69.85	29	874	40	1277
72	72.85	30	912	42	1332
75	75.85	31	950	44	1388
78	78.85	33	988	46	1443
81	81.85	34	1026	47	1499
84	84.85	35	1064	49	1554
87	87.85	36	1102	51	1610
90	90.85	38	1140	53	1665
93	93.85	39	1178	54	1721
96	96.85	40	1216	56	1776
99	99.85	41	1254	58	1832
102	102.85	43	1292	60	1887
105	105.85	44	1330	61	1943
108	108.85	45	1368	63	1998
111	111.85	46	1406	65	2054
114	114.85	48	1444	67	2109
117	117.85	49	1482	68	2165
120	120.85	50	1520	70	2220

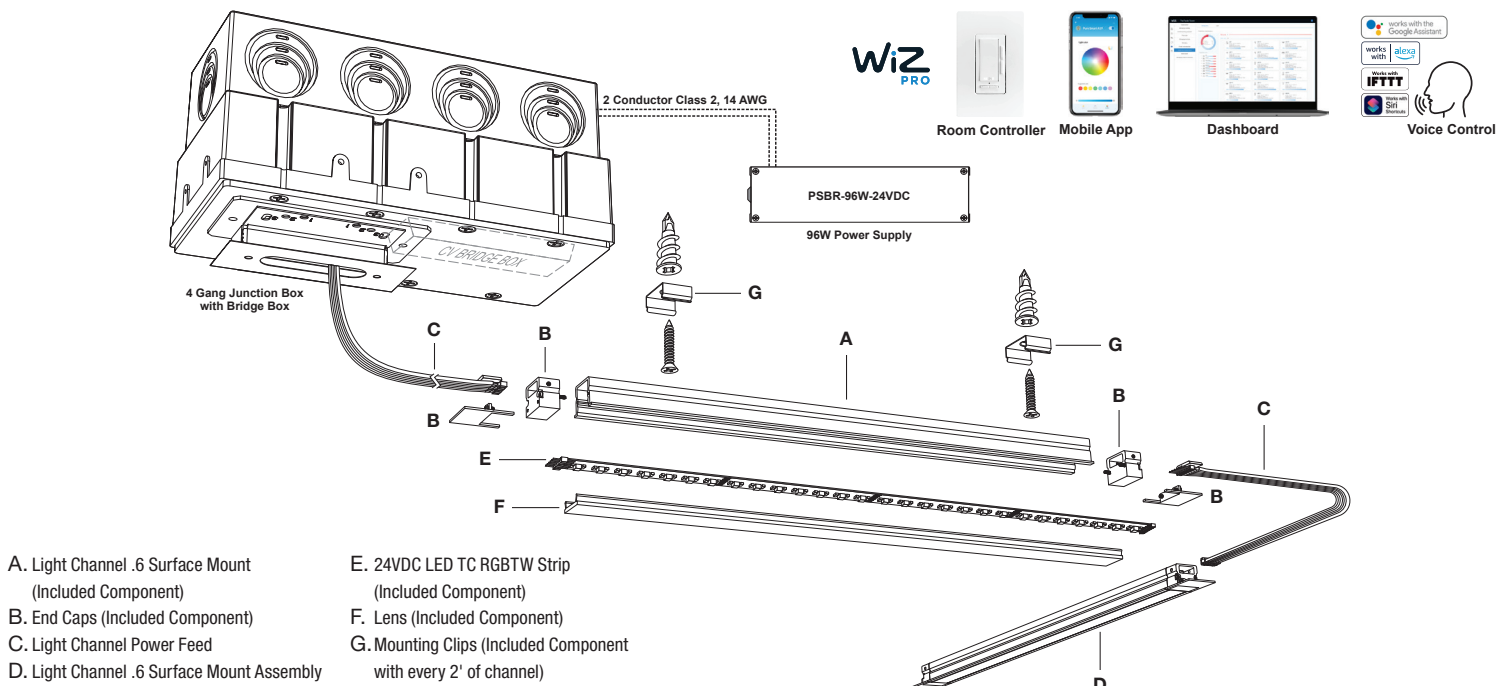
PROJECT		FIXTURE TYPE		DATE	
---------	--	--------------	--	------	--

LIGHT CHANNEL 0.6" RECESSED MILLWORK

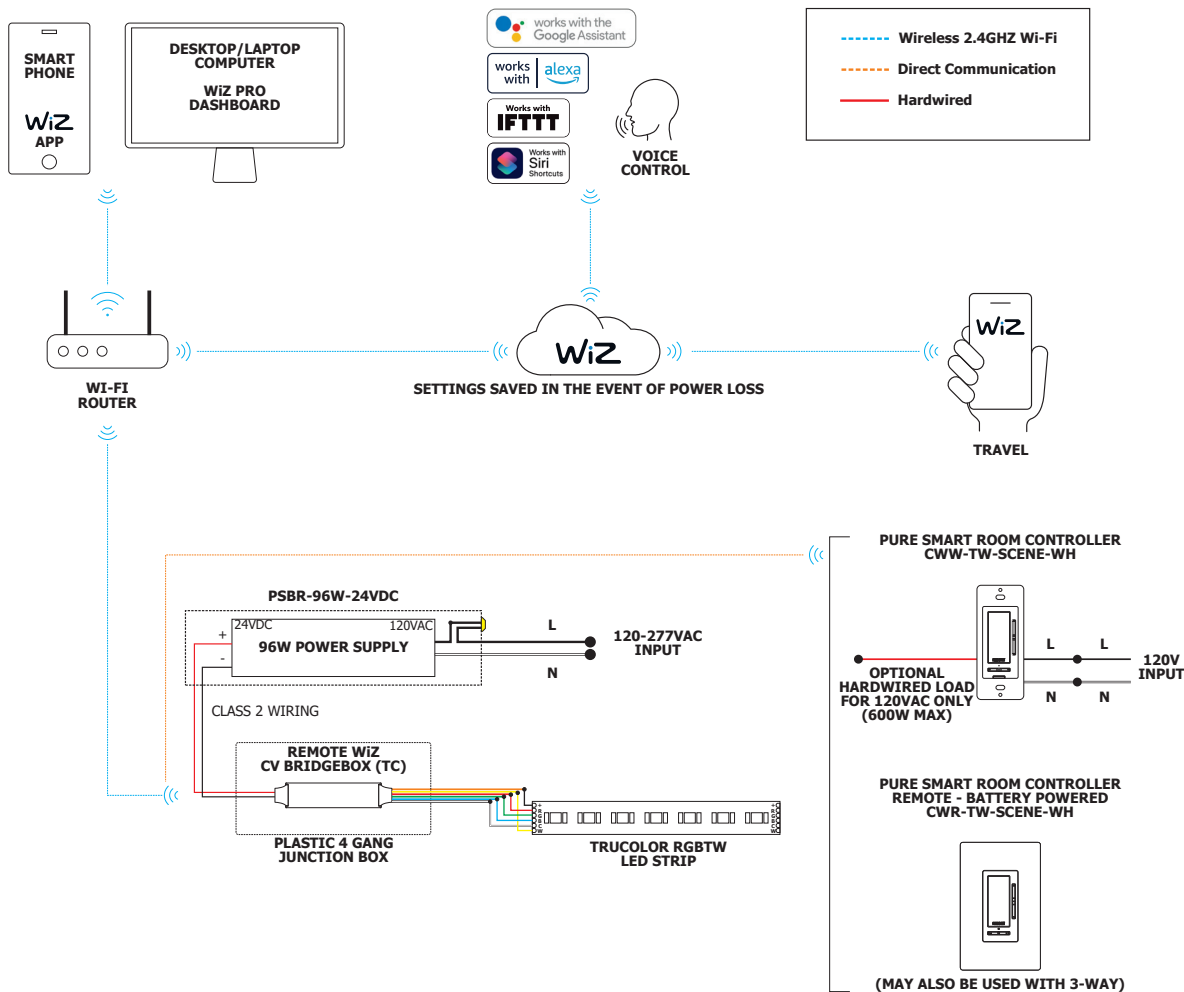
24VDC RECESSED 5 CHANNEL WIRELESS CONTROL, TRUCOLOR™ RGBTW

INCLUDED COMPONENTS: Light Channel .6 Millwork system overview

REV 05.15.25



WIRING DIAGRAM: For Indoor Light Channel .6 Millwork

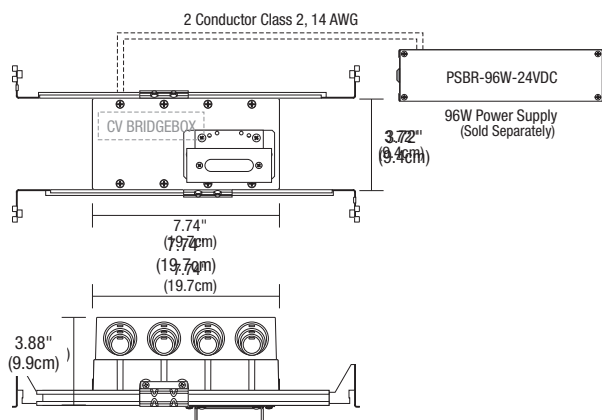


PROJECT		FIXTURE TYPE		DATE	
---------	--	--------------	--	------	--

LIGHT CHANNEL 0.6" RECESSED MILLWORK

24VDC RECESSED 5 CHANNEL WIRELESS CONTROL, TRUCOLOR™ RGBTW

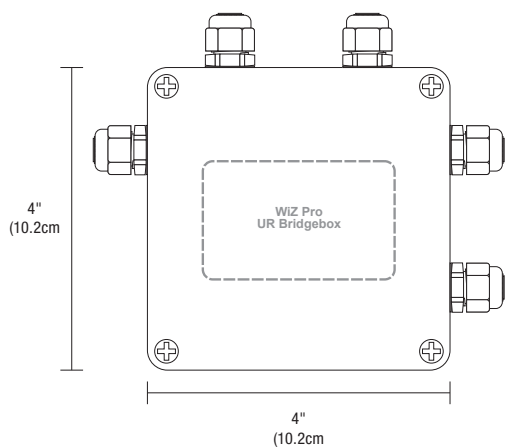
COMPONENTS J-box, Split Canopies, & Mounting Clips are included and sold separately for replacement only



1" RECTANGLE CANOPY WITH 4 GANG JUNCTION BOX AND PURE SMART WIZ PRO CV BRIDGEBOX FOR DRYWALL OR WOOD CEILING

The slim profile 1RE Canopy with 4 Gang Junction Box come with adjustable hanger bars and a Pure Smart WIZ Pro CV Bridgebox allowing for 5-channel, wireless control of the TruColor RGBTW Flex Neon Luminaire. Two Class 2, 14AWG stranded conductors from the Remote Power Supply up to 40 ft away are required.

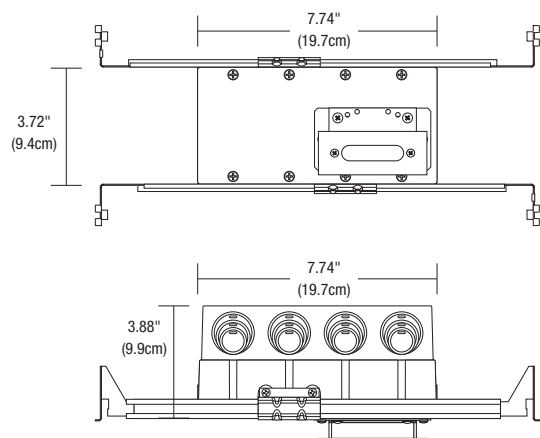
System	Canopy	Wattage	Control	Color Temperature	System Code
BR	1RE4G	96W	WZ	TC5W5	LC
BR Bridgebox Remote	1RE4G 1" Rectangle Canopy with 4 Gang Junction Box	96W 96 Watts	WZ WIZ pro Connected CV Smart Bridgebox Included	TC5W5 TruColor™ 5 watts RGB & 5 watts Tunable White TC5W7 TruColor™ 5 watts RGB & 7 watts Tunable White	LC Light Channel



T BAR DROP CEILING SURFACE 4" SQUARE GANG JBOX AND PURE SMART WIZ PRO UR BRIDGEBOX

The 4" Square Junction Box located above Tbar ceiling includes connectors for fast and secure connection to the RGBTW Cirrus fixture and Pure Smart WIZ Pro UR Bridge box allowing for 5-channel, wireless control of the TruColor™ RGBTW Cirrus. Requires two Class 2, 14 AWG stranded conductors from the Remote Power Supply up to 40 ft away. Can be quick shipped for rough-in.

Type	Component	Wattage	Control System	Color Temperature Options	System
BR	4SQ	96W	WZ	TC5W5	LC
BR Bridgebox Remote	4SQ 4 Square Junction Box, 1 to 5 connector outputs	96W 96 Watts	WZ WIZ pro Connected UR Smart Bridge box Included	TC5W5 TruColor™ 5 watts RGB & 5 watts Tunable White TC5W7 TruColor™ 5 watts RGB & 7 watts Tunable White	LC Light Channel



CEILING SURFACE 1" RECTANGLE CANOPY & 4 GANG JUNCTION BOX (INCLUDED WITH COMPLETE FIXTURE ORDERING CODE)

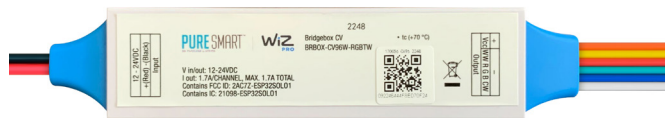
The Junction Box opening is covered by the fixture for a clean no Canopy look. Includes 4 gang Junction Box with adjustable bar hangers. Includes a Goof Plate, for poor plastering around J-box. Can be quick shipped for rough-in.

Type	Component	Ceiling/Wall Type
C	1RE	JB4G
C Channel	1RE 1" Rectangle End Feed	JB4G 6 Conductor 4 Gang Junction Box

LIGHT CHANNEL 0.6" RECESSED MILLWORK

24VDC RECESSED 5 CHANNEL WIRELESS CONTROL, TRUCOLOR™ RGBTW

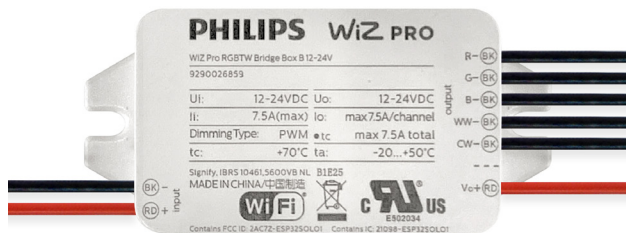
REPLACEMENT PARTS



CV BRIDGE BOX ONLY (REPLACEMENT FOR 1RE4G JBOX)

The Pure Smart™ Class2 wiring Type, for use in tight spaces like a cabinet. CV96W RGBTW Bridgebox enables wireless control of a constant voltage, 5 Channel RGBTW LED load with the WiZ Pro wireless control ecosystem. For use with Non-Dim PSB (PSBR-96W-24VDC).

Product	Wattage	Color Temperature Options	System
BRBOX	CV96W	TC5W5	LC
BRBOX Bridgebox	CV96W Slim Profile WIZ Bridgebox	TC5W5 TruColor™ RGBTW 5 watts RGB & 5 watts Tunable White TC5W7 TruColor™ RGBTW 5 watts RGB & 7 watts Tunable White	LC Light Channel



PURE SMART/WIZ PRO UR BRIDGEBOX

WIZ Pro UR Bridgebox is included with 4" Square Junction for TBar ceilings and allows for integration into the WiZ Pro wireless control ecosystem. The part numbers below are to be used for replacement only. Pure Smart/WiZ Pro UR Bridgeboxes are pre-programmed with Pure Smart app icons, and proprietary color mixing for tunable white and RGBTW.

Type	Color Temperature Options	System
BRBOX	UR96W	TC5W5
BRBOX Bridgebox	UR96W 96 Watts	TC5W5 TruColor™ RGBTW 5 watts RGB & 5 watts Tunable White TC5W7 TruColor™ RGBTW 5 watts RGB & 7 watts Tunable White



RGBTW



0.25"
(0.6cm)

LIGHT CHANNEL POWER CONNECTOR

One Female Power Connector is included with each order of channel.

System	Type	Product	Length	Color Temperature
SS	FE	CON	72IN	RGBTW
SS Stomp Strip/Soft Strip	FE Female Connector	CON Connector	72IN 72 Inches	RGBTW Red, Green, Blue, & Tunable White



RGBTW



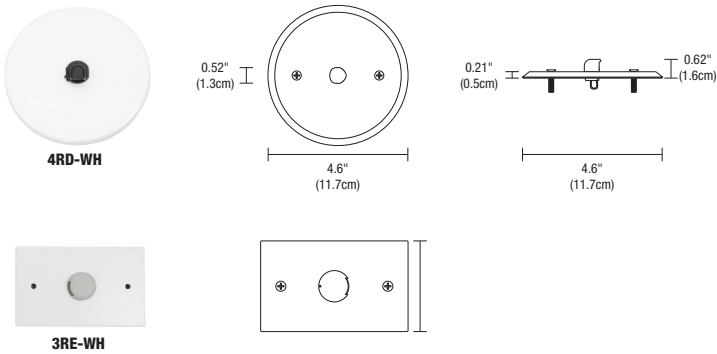
FLEXIBLE CONNECTOR

Flexible connectors link two sections of the Light Channel end to end. WAGO 221 Lever Nuts can also be used as jumper connections according to your specific application requirements.

System	Type	Product	Size	Color Temperature
SS	CFX	CON	12IN	RGBTW
SS Stomp Strip/Soft Strip	CFX Flexible Connector	CON Connector	12IN 12 Inches 72IN 72 Inches	RGBTW Red, Green, Blue, & Tunable White

LIGHT CHANNEL 0.6" RECESSED MILLWORK

24VDC RECESSED 5 CHANNEL WIRELESS CONTROL, TRUCOLOR™ RGBTW



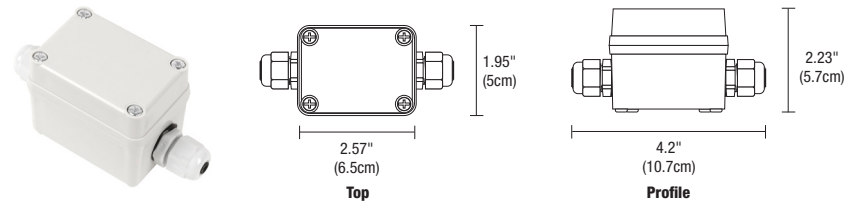
CANOPY COVER & SPLICE BOX

Use for remote located power supply. The 3 inch rectangle or 4 inch round white canopy covers the electrical box and feeds wires for Light Channel. The Splice Box provides a safe enclosure for low voltage connections.

Product	Finish
3RE	WH
3RE 3" Rectangle Canopy Cover	WH White
4RD 4" Round Canopy Cover	

JUNCTION BOX

Low voltage Splice Box with connectors.



Product	Type	Option
2RE	JBOX	W
2RE 2" Rectangle	JBOX Junction Box	W Wet Location

PURE SMART™ Wi-Fi 120V ROOM CONTROLLER

CONNECTED BY WiZ PRO



DESCRIPTION:

The Pure Smart™ Wi-Fi Room Controller works with any WiZ Connected Smart fixtures/lamps. The Room Controller grants independent adjustment of both color temperature and intensity, as well as scene selection for Single Channel/Static, Tunable White, and TruColor™ RGBTW Fixtures. Four preset scenes can be associated with the room controller via the WiZ App. Custom scenes can be created using multiple layers of light, colors, and can include Pure Smart Wi-Fi Dimmer and Switch as well. No Hub required. Room Controller communicates with fixtures directly on the Local Area Network allowing for control even if the Wi-Fi goes down. Compatible with WiZ Connected fixtures only. For custom quotes and layout assistance, send your drawings and ideas to our design team: design@PureEdgeLighting.com.

OPERATION

Features ON/OFF buttons, CCT and brightness control rockers, and 4 preset/custom scene selections. Maximum output of 600W for hardwired WiZ Connected devices. No load restriction when load wire is not used and devices are connected wirelessly to Room Controller. Communicates with 2.4GHz Wi-Fi only. No Hub Required.

SECURITY

3rd party log-in and cloud security provide a safe and protected connection. WiZ does not store nor share any personal information.

EASY INSTALLATION

The Pure Smart™ Wi-Fi Room Controller installs just like a traditional dimmer. 120V power is all that is needed. Switch leg is optional for CWW-TW-SCENE-WH. This is also offered in a completely wireless version (See Pure Smart Remote Room Controller CWR-TW-SCENE-WH). Compatible with standard gangable boxes. Requires neutral wire. No Hub Required. Single Pole or 3-way compatible. 3-way can be achieved by assigning two room controllers (CWW-TW-SCENE or [CWR-TW-SCENE-WH](#)) to the same target/room/fixture. 3-way can also be achieved with a room controller in combination with the Pure Smart Dimmer ([SWW-DIM-WH](#)), or the Pure Smart Switch ([SWW-SWT-WH](#)) by assigning the dimmer or switch as a target to the room controller.

WiZ APP

The Room Controller is added as an accessory in the WiZ app (Available on iOS or Android) and communicates directly to the WiZ enabled light fixture via direct wi-fi signal on Local Area Network (LAN). Voice control enabled when used in conjunction with Google Assistant, Siri, Alexa, IFTTT, and SmartThings. Grouping, zoning, scheduling, and custom scenes can all be programmed with the WiZ app or WiZ Pro Dashboard.

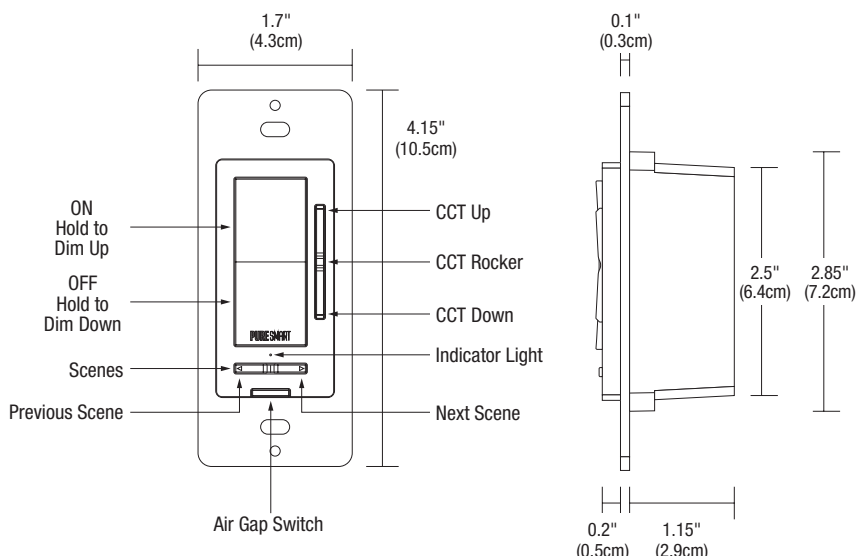
BODY

Durable polycarbonate body, compatible with decorator style wall plate (not included).

SPECIFICATIONS

Approved Location	Dry / Indoor
Input Voltage	120Vac - 60 Hz
Certification	cULus, FCC
Compatible Load(s)	WiZ Connected products only
Maximum Power	600W (Hardwired Loads), No Maximum for Wireless Loads
Output Current	5A
Power Consumption	Relay OFF: 0.07W Soft OFF: 0.79W ON: 0.79W
Dimming	Dims to 3%
Operating Temperature	23°F~113°F (-5°C~45°C)
Wireless Frequency	2.4GHz
Wireless Standard	IEEE 802.11
Warranty	3 Year

Product	Type	Finish
CWW	TW-SCENE	WH
CWW 120V Controller, Wall Mount, WiZ Pro connected	TW-SCENE Tunable White + Scenes	WH White



PURE SMART™ Wi-Fi REMOTE ROOM CONTROLLER

CONNECTED BY WiZ PRO FOR TABLE TOP OR WALL



DESCRIPTION:

The Pure Smart™ Wi-Fi Remote Room Controller works with any WiZ Connected Smart fixtures/lamps. The Remote Room Controller is powered by four AAA batteries (not included) and grants independent adjustment of color temperature and intensity, as well as scene selection for four favorite scenes which are selected and assigned to the room controller in the WiZ App. The four favorited scenes, as with any scene in the WiZ ecosystem, can consist of any combination of products including bulbs, luminaires, or smart controls and can support any combination of color ranges including static white or dimmable white, Tunable White, and Tricolor RGBTW allowing for intricate customization and control. No Hub required. Room Controller communicates with fixtures directly on the Local Area Network allowing for control even if the Wi-Fi goes down. Compatible with WiZ Connected fixtures only. For custom quotes and layout assistance, send your drawings and ideas to our design team: design@PureEdgeLighting.com.

OPERATION

Dimming, CCT control rocker, and a scene control toggle. No load maximum. Communicates with 2.4GHz Wi-Fi only. No Hub Required.

EASY INSTALLATION

The Pure Smart™ Wi-Fi Remote Room Controller is powered by 4 AAA batteries (not included) and is therefore completely wireless. Multiple mounting methods available including to a standard switch box, on the wall with the included drywall anchors or adhesive strip, or kept on a tabletop with the rubber pads that help to keep it stationary. Single Pole or 3-way compatible with Pure Smart Dimmer ([SWW-DIM-WH](#)), Pure Smart Switch ([SWW-SWT-WH](#)), 120V Room Controller ([CWW-TW-SCENE-WH](#)) and another Remote Room Controller. No wires. No hub. Total control.

WiZ APP

The Room Controller is added as an accessory in the WiZ app (Available on iOS or Android) and communicates directly to the WiZ enabled light fixture via direct wi-fi signal on Local Area Network (LAN). Voice control enabled when used in conjunction with Google Assistant, Siri, Alexa, IFTTT, and SmartThings. Grouping, zoning, scheduling, and custom scenes can all be programmed with the WiZ app or WiZ Pro Dashboard.

BODY

Durable polycarbonate body.

SECURITY

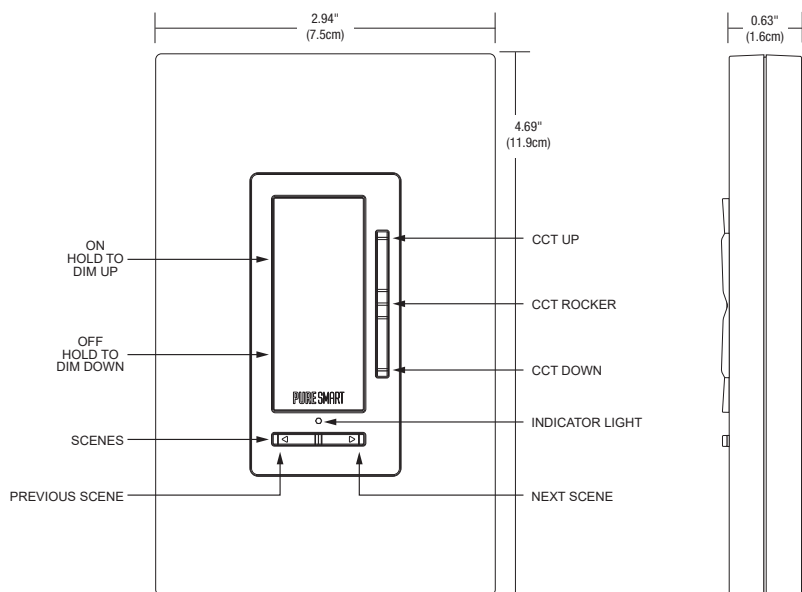
3rd party log-in and cloud security provide a safe and protected connection. WiZ does not store nor share any personal information.

SPECIFICATIONS

Approved Location	Dry / Indoor
Input Voltage	4 AAA batteries (not included)
Certification	cULus, FCC
Compatible Load(s)	WiZ Connected products only
Maximum Power	No Load Maximum
Output Current	5A
Power Consumption	Relay OFF: 0.07W Soft OFF: 0.79W ON: 0.79W
Dimming	Dims to 3%
Operating Temperature	23°F~113°F (-5°C~45°C)
Wireless Frequency	2.4GHz
Wireless Standard	IEEE 802.11
Warranty	3 Year



Product	Type	Finish
CWR	TW-SCENE	WH
CWR Controller, WiZ Pro connected Remote	TW-SCENE Tunable White + Scenes	WH White



PROJECT	FIXTURE TYPE	DATE
---------	--------------	------

LIGHT CHANNEL TM30 DATA

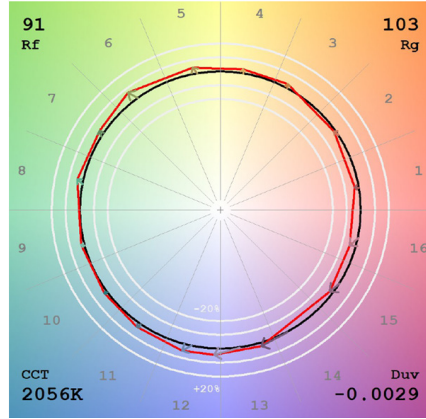
24VDC RECESSED 5 CHANNEL WIRELESS CONTROL, TRUCOLOR™ RGBTW

REV 05.15.25

TM-30-15 DATA: The data below is for TruColor™ RGBTW (S5W7) bare LED Strips. Consistent color temperatures throughout a single strip and among multiple strips is possible through a 3 phase binning process in which each order is inspected with a color meter to ensure uniformity.

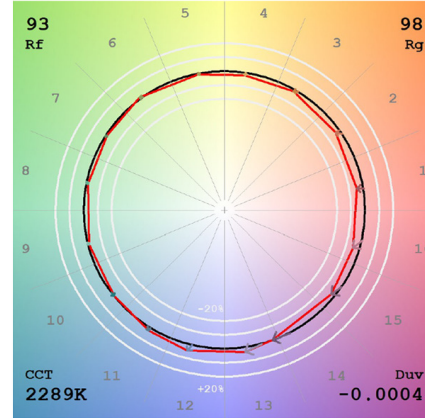
2000K (TruColor™ RGBTW)

View Angle:2 Deg



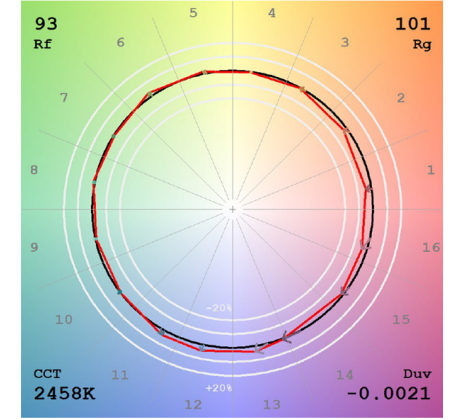
2200K (TruColor™ RGBTW)

View Angle:2 Deg



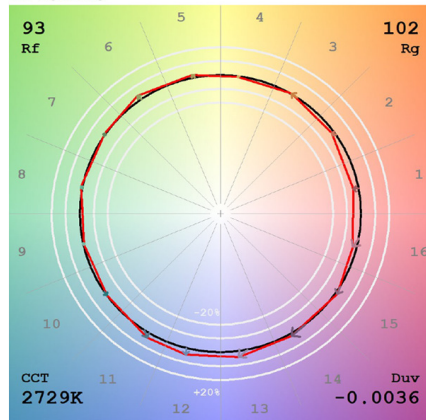
2400K (TruColor™ RGBTW)

View Angle:2 Deg



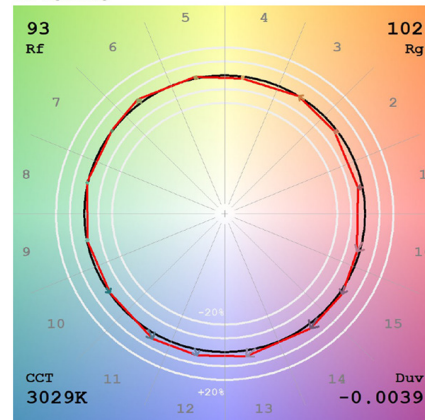
2700K (TruColor™ RGBTW)

View Angle:2 Deg



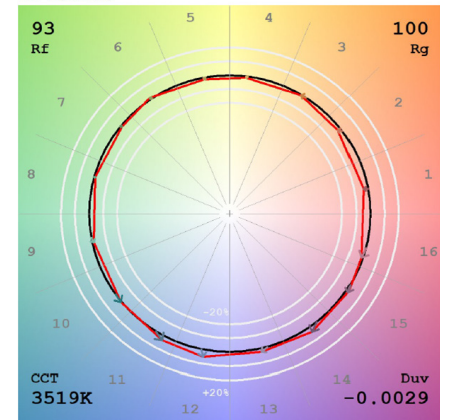
3000K (TruColor™ RGBTW)

View Angle:2 Deg



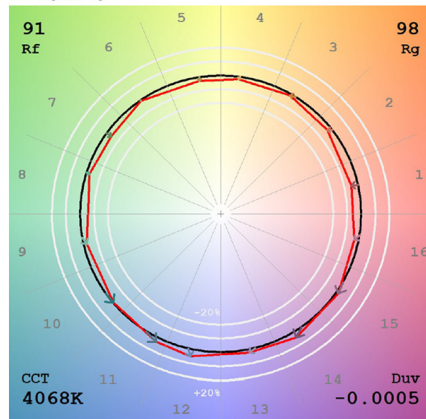
3500K (TruColor™ RGBTW)

View Angle:2 Deg



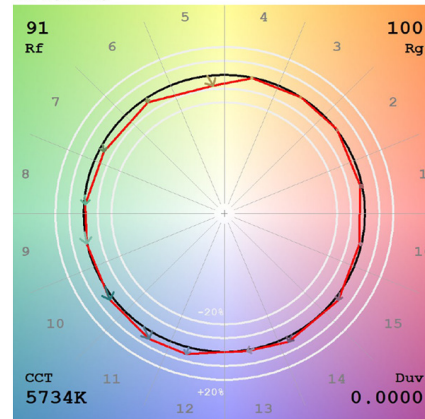
4000K (TruColor™ RGBTW)

View Angle:2 Deg



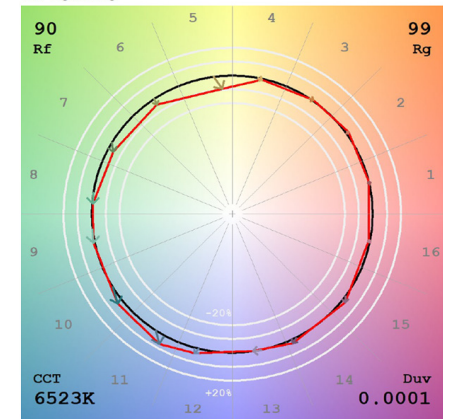
5700K (TruColor™ RGBTW)

View Angle:2 Deg



6500K (TruColor™ RGBTW)

View Angle:2 Deg



PROJECT		FIXTURE TYPE		DATE	
---------	--	--------------	--	------	--