

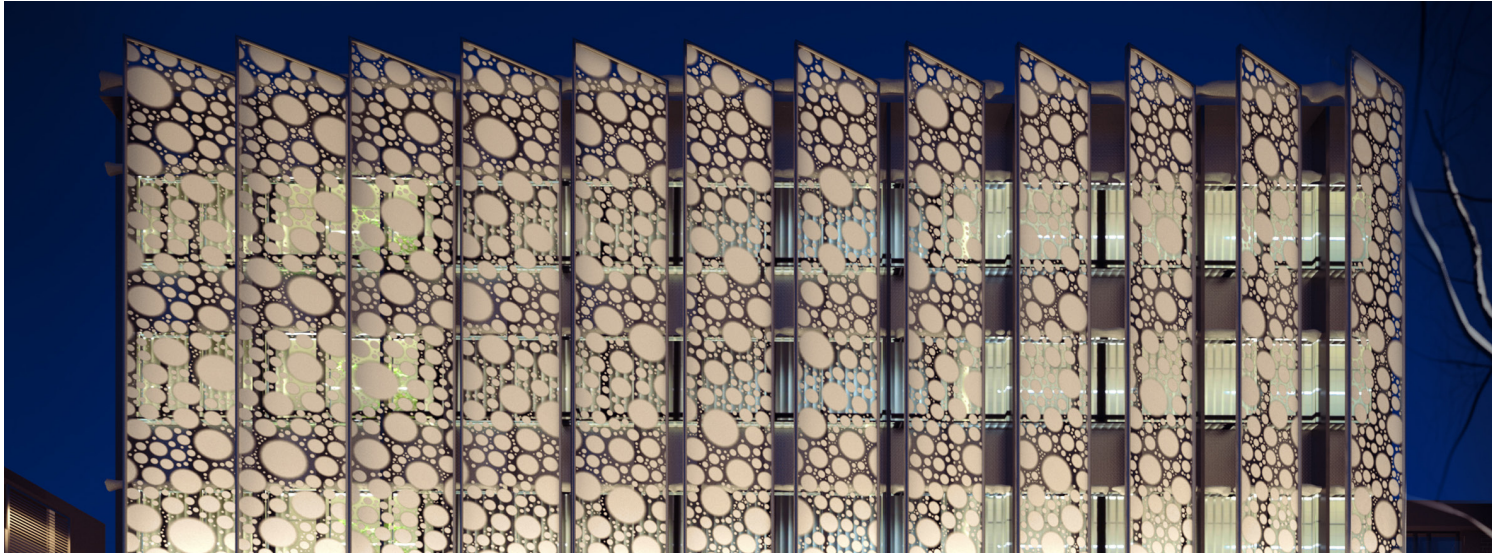


# MINI STAR LINEAR LED OUTDOOR HIGH OUTPUT

24VDC, 12 WATTS PER FOOT, IP66 STATIC WHITE AND STATIC COLOR



REV 09.01.21



## DESCRIPTION

Clean lines paired with a minimal profile create the Mini Star Outdoor Linear LED fixture. Using state-of-the-art technology the Mini Star is a workhorse housed in a compact design. Proprietary thermal convection enables rapid transference of heat in combination with High Powered LED's, makes the Mini Star an unparalleled source of light. With ability to mount on the ceiling, wall or floor with adjustable mounting clips and your choice of various oval lenses and wall wash functionality, the Mini Star has numerous outdoor applications. Power the Mini Star IP66 Rated fixture with PureEdge's Wet Rated Universal Dimming (**ELV, 0-10, TRIAC**) Power Supply or from a remote indoor location (Sold Separately). Multiple Mini Stars can be ganged together, up to 100 watts, before re-feeding.

## ELECTRICAL

- Input Voltage: 24VDC.
- Universal Power Supply 120/277VAC-24VDC, Sold Separately SKU: **PSB-96W-UNI-24VDC-W**
- Class 2 Power Supply
- Power Consumption of 12 watts per foot
- LED's/FT: 8
- Order in 4 Wattage/Length options, and gang multiple fixtures together, up to 100 watts before re-feeding
- Cable Connector: **OC-CFX-2CON-(12IN or 96IN)-W** Cord conductors can be ordered to gang multiple fixtures together for a watertight connection
- Dimming: Universal (**ELV, 0-10, TRIAC**)

## FINISHES



Black Powder Coat  
**BK**



Satin Aluminum  
**SA**

## FEATURES & BENEFITS

- Standard lengths: 24" or 48" at 12w per foot
- Static White Color Temperature Options: 2200K / 2700K / 3000K / 4000K or 5000K
- Static Color Options: Red, Green, Blue, Amber
- Adjustable Mounting Clips: Innovative mounting clips are attached for Ground Level, Ceiling, or Wall mounting options; for Wall Grazing, Wall Washing, and general outdoor lighting applications
- Easy Installation: Push-IN Water Right Barrel Connectors
- Beam Spread: 40°, 60° and 12° x 53° Oval
- 2 Finish Options: Satin Aluminum or Black Powder Coated Finish

## LUMEN PERFORMANCE DATA

Based on 3000K 48" at 48 Watts, with 15° x 30° Oval Lens

- Lumen: 3018
- Efficiency: 63 LM/W
- CRI: 83

## PHYSICAL

- Material: Low Copper Aluminum Die Casting with High Pure Aluminum Alloy Extrusion, High Weather Resistant Outdoor Powder Coated Finish, Tempered Optical Glass Diffuser 1.25" thick LED COB
- Sizes: **24W24** (24" x 1.7" x 2") and **48W48** (48" x 1.7" x 2")
- Operating Temperature: -4°F to 113°F
- Average LED Life: 50,000 Hours

## COMPLIANCE

- Class 2 Power Supply
- ETL Listed
- IP66 Wet Rated

## WARRANTY

5 Year Pro-rated Warranty from Time of Purchase

System	Wattage & Length	Beam Spread	Color Temperature	Finish
<b>MSLO-24V</b>	<b>48W48</b>	<b>60</b>	<b>30K</b>	<b>SA</b>
<b>MSLO-24V</b> Mini Star Linear Outdoor 2VDC System	<b>24W24</b> 24 Watts, 24" <b>48W48</b> 48 Watts, 48"	<b>40</b> 40° Lens <b>60</b> 60° Lens <b>12X53</b> 12x53° Oval Lens	<b>22K</b> 2200K Amber White <b>27K</b> 2700K Incandescent White <b>30K</b> 3000K Warm White <b>40K</b> 4000K Cool White <b>50K</b> 5000K Daylight White	<b>AAA</b> Amber <b>BBB</b> Blue <b>GGG</b> Green <b>RRR</b> Red

PROJECT	FIXTURE TYPE	DATE
---------	--------------	------



# MINI STAR LINEAR LED OUTDOOR

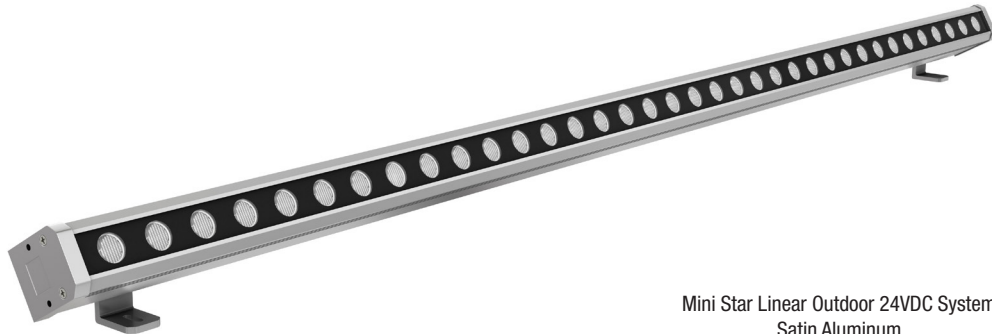
24VDC, 12 WATTS PER FOOT, IP66 STATIC WHITE AND STATIC COLOR



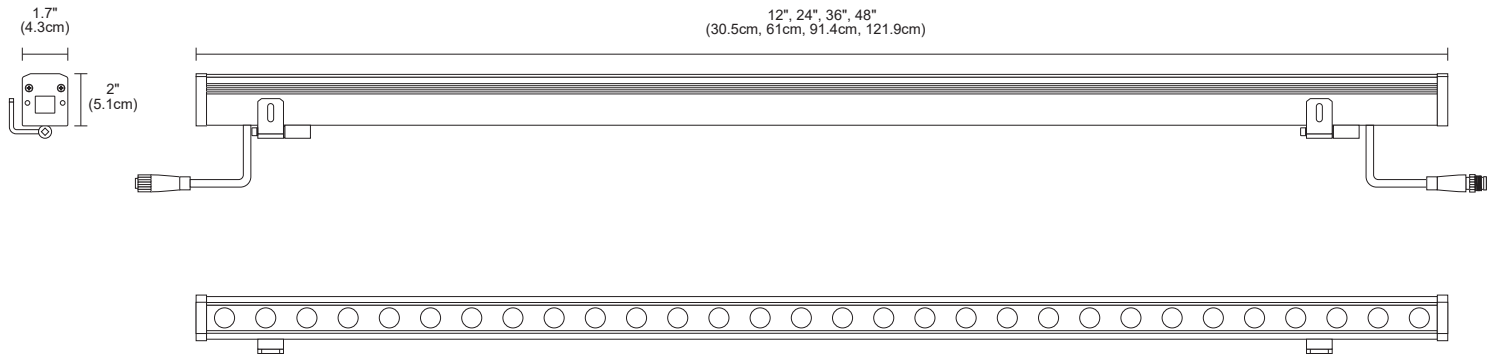
REV 09.01.21



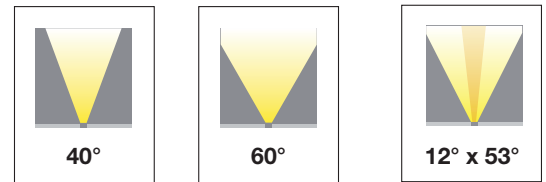
Mini Star Linear Outdoor 24VDC System  
Black Powder Coated



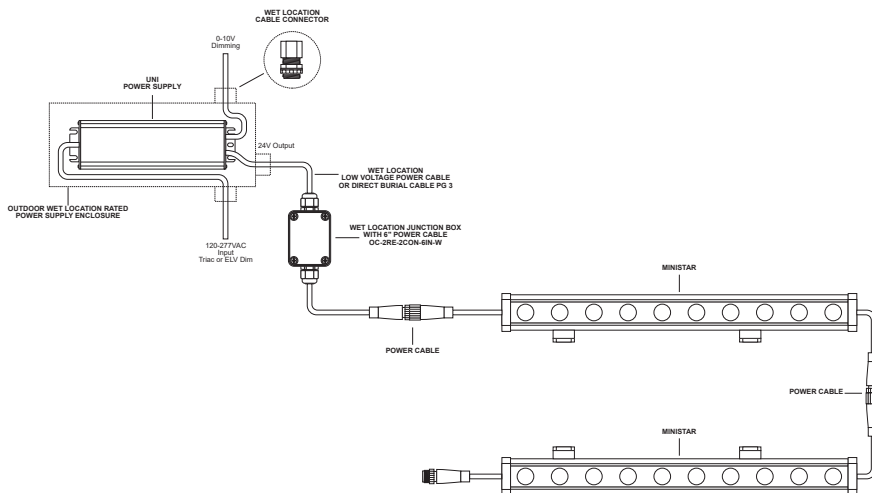
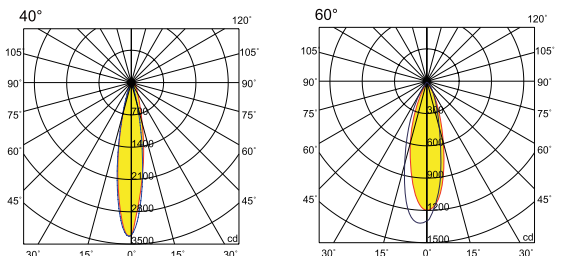
Mini Star Linear Outdoor 24VDC System  
Satin Aluminum



### Nominal Beam Spread



### Nominal Light Distribution Graphs



PROJECT	FIXTURE TYPE	DATE
---------	--------------	------



# MINI STAR LINEAR LED OUTDOOR

24VDC, 12 WATTS PER FOOT, IP66 STATIC WHITE AND STATIC COLOR

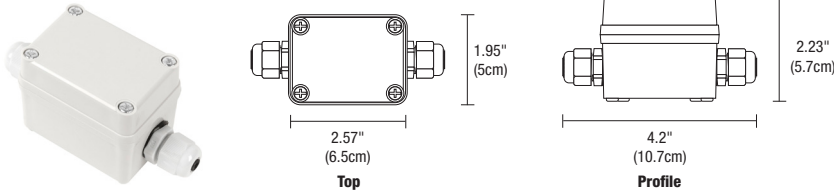


REV 09.01.21

## Components: Components for the Mini Star Linear Fixture

### WET LOCATION JUNCTION BOX

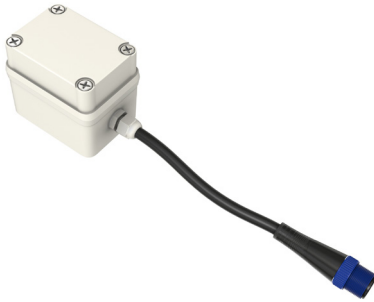
Wet-rated low voltage Splice Box with connectors.



Product	Type	Option
<b>2RE</b>	<b>JBOX</b>	<b>W</b>
2RE 2" Rectangle	JBOX Junction Box	W Wet Location

### WET LOCATION JUNCTION BOX WITH 6" POWER CABLE

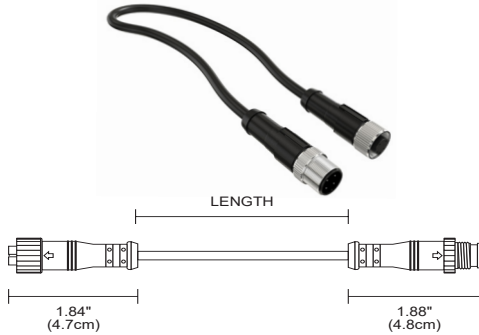
This watertight, multi-fixture Junction Box is especially designed for lighting in wet and damp locations. It is versatile, rugged and simple to install. The Junction Box comes standard with a 6" Flexible Cable providing easy, safe, and reliable connections for 24V low voltage luminaires. This box is approved for indoor and outdoor usage and complies with all the requirements of UL1241 and the National Electric Code.



Product	Canopy	Product	Size	Option
<b>OC</b>	<b>2RE</b>	<b>2CON</b>	<b>6IN</b>	<b>W</b>
OC Outdoor Cable	2RE 2" Rectangle	2CON 2 Pin Connector	6IN 6"	W Wet Location

### WET LOCATION POWER/JUMPER CABLE

This Flexible Connector is designed to work with all of our Linear Outdoor Systems in outdoor damp and wet environments. This Flexible Connector is easy to install and configure, helping you create innovative lighting designs. Length 12" or 96", may cut one end off and use for power feed connector.



Product	Type	Product	Size	Option
<b>OC</b>	<b>CFX</b>	<b>2CON</b>	<b>12IN</b>	<b>W</b>
OC Outdoor Cable	CFX Flexible Connector	2CON 2 Pin Connector	12IN 12" 96IN 96"	W Wet Location

### DIRECT BURIAL LOCATION CABLE ORDER PER FOOT

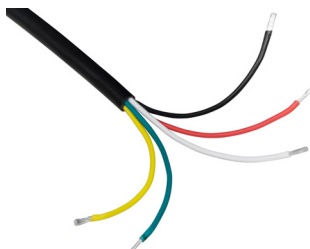
Our Direct Burial, 2 Conductor, 12 Gage Cable is a durable and adaptable cable suitable for transmitting power, control, and switching in outdoor wet and in ground environments. Keep within 60 ft between fixture and power supply.



Product	Gauge	Cable	Length
<b>DB</b>	<b>12G</b>	<b>2C</b>	<b>25FT</b>
DB Direct Burial	12G 12 Gauge	2C 2 Conductor	25FT 25 Feet 50FT 50 Feet 100FT 100 Feet

### WET AND DAMP LOCATION CABLE ORDER PER FOOT

Our Wet Location, 5 Conductor, 14 Gage Cable is a durable and adaptable cable suitable for transmitting power, control, and switching in indoor and outdoor wet and damp environments. Cable sold by the foot, simply specify the length needed by the foot. Keep within 50 ft between fixture and power supply.



Product	Gauge	Cable	Length
<b>OC</b>	<b>14G</b>	<b>5C</b>	<b>25FT</b>
OC Outdoor Cable	14G 14 Gauge	25C 5 Conductor	25FT 25 Feet 50FT 50 Feet 100FT 100 Feet

PROJECT	FIXTURE TYPE	DATE
---------	--------------	------

# OUTDOOR CONSTANT VOLTAGE REMOTE POWER SUPPLIES

24VDC, UNI - UNIVERSAL DIMMING WITH ELV, TRIAC, & 0-10V WET LOCATION

REV. 09.01.21



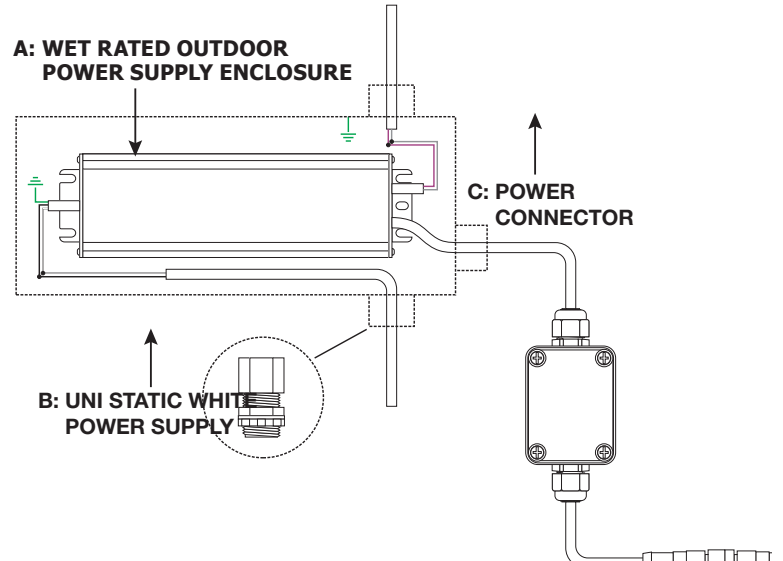
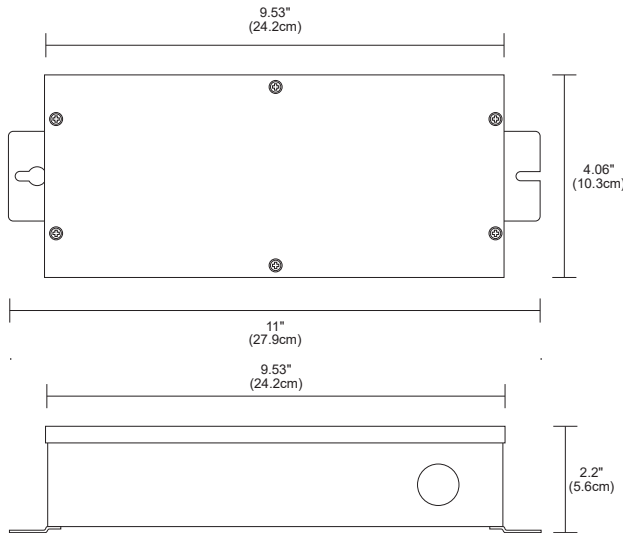
Con-1-2CORD-O Cord conductors included

## UNI POWER SUPPLY

Universal Power Supply: 120/277VAC-24VDC with Universal dimming ELV, Triac or 0-10V dimmers. 100-0% Flicker free dimming. Aluminum casing for optimal heat dissipation. Isolated output power per NEC and UL safety requirements. UL & ETL recognized/ listed, meets UL8750, 1310 requirement. Auto-reset; short circuit, overload and thermal protection. Class 2 power supply. Efficient, High power factor > 0.90. Exceeds California Title 24 Requirements AAA rating. Efficiency > 84% Power Factor > 0.90. Case TC 90°C Max. Protection Input / Output Storage -30°C / +90°C Humidity 95% RH Max. Class 2 Power Supply Dimming ELV, Triac, 0-10V IP Rating IP20, IP67



Product	Wattage	Type	Voltage	Option
<b>PSB</b>	<b>60W</b>	<b>UNI</b>	<b>24VDC</b>	<b>W</b>
PSB Power Supply with junction box	60W 60 Watts 96W 96 Watts	UNI Uni Driver	24VDC 24VDC	W Wet Location



### COMPATIBLE DIMMERS:

ELV DIMMING & CONTROLS
LEGRAND ADORNE: ADTP-703TUM4
0-10 DIMMING & CONTROLS
PHILIPS SUNRISE: SR1200ZTUNV
LEVITON: LEV40050
LEVITON IP710-LFZ
LEGRAND: ADPD4FBL3P2W4

### A. WET RATED OUTDOOR POWER SUPPLY ENCLOSURE

Use of Outdoor LED Mini Star requires a Wet Location Junction Box to house the wire connection from the LED Mini Star to Power Supply. The Outdoor Connection Box is sold separately.

### B. UNI POWER SUPPLY

Outdoor-rated Power Supplies are required for use with a Outdoor LED Mini Star, and are sold separately. May be dimmed with ELV, Triac or 0-10 120/277-24VDC

### C. POWER CONNECTOR

Power Connector connects the LED Mini Star to remote power supply.

- Flicker free dimming
- Class 2 power supply
- Efficient, High power factor > 0.90
- Aluminum casing for optimal heat dissipation
- Isolated output power per NEC and UL safety requirements

- UL & ETL recognized/ listed, meets UL 8750, 1310 requirements
- Auto-reset; short circuit, overload and thermal protection
- The Solid State Constant Voltage Uni-Power Supply is compatible with most commercially available Dimmers:
  - Triac Dimmer: (Forward Phase) Typically used for the dimming of Incandescent and Low Voltage Magnetic Transformers
  - ELV Dimmer: (Reverse Phase) Dimming of Electronic Low Voltage Transformers and Power Supply's used for LED lighting
  - 0-10 Dimmer: Dims the Low Voltage side of a 0-10 volt power supply commonly used in large scale lighting or commercial applications.
- The Uni-Power Supply is recommended with any Siemens/Murray brand of arc fault breaker to overcome the issues with tripping the breakers with an ELV LED Low Voltage Drivers.

PROJECT		FIXTURE TYPE		DATE	
---------	--	--------------	--	------	--

# INDOOR CONSTANT VOLTAGE REMOTE POWER SUPPLIES

24VDC, UNIVERSAL DIMMING WITH ELV, TRIAC, & 0-10V FOR STATIC WHITE, WARM DIM

REV 09.01.21

UNIVERSAL POWER SUPPLIES & RECOMMENDED DIMMERS				
ORDERING CODE	PSB-40W-UNI-24VDC 	PSB-60W-UNI-24VDC 	PSB-2X40W-UNI-24VDC 	PSB-2X60W-UNI-24VDC 
	<b>SPECIFICATIONS</b>			

<b>MAXIMUM LOAD</b>	40W	60W	2X40W	2X60W
<b>INPUT VOLTAGE</b>	120-277VAC	120-277VAC	120-277VAC	120-277VAC
<b>OUTPUT VOLTAGE</b>	24VDC	24VDC	24VDC	24VDC
<b>DIMENSIONS</b>	12.4" X 3.12" X 2.18"	12.4" X 3.12" X 2.18"	12.15" X 6.48" X 2.18"	12.15" X 6.48" X 2.18"
<b>CLASSIFICATION</b>	CLASS 2	CLASS 2	CLASS 2	CLASS 2
<b>T-BAR MOUNTING</b>	PSB-40W-UNI-24VDC-TB	PSB-60W-UNI-24VDC-TB	PSB-2X40W-UNI-24VDC-TB	PSB-2X60W-UNI-24VDC-TB
<b>IN-WALL MOUNTING</b>	PSB-40W-UNI-24VDC-IW	PSB-60W-UNI-24VDC-IW	PSB-2X40W-UNI-24VDC-IW	PSB-2X60W-UNI-24VDC-IW

UNIVERSAL POWER SUPPLIES & RECOMMENDED DIMMERS				
ORDERING CODE	PSB-96W-UNI-24VDC 	PSB-2X96W-UNI-24VDC 	PSB-3X96W-UNI-24VDC 	PSB-4X96W-UNI-24VDC 
	<b>SPECIFICATIONS</b>			

<b>MAXIMUM LOAD</b>	96W	2X96W	3X96W	4X96W
<b>INPUT VOLTAGE</b>	120-277VAC	120-277VAC	120-277VAC	120-277VAC
<b>OUTPUT VOLTAGE</b>	24VDC	24VDC	24VDC	24VDC
<b>DIMENSIONS</b>	12.4" X 3.12" X 2.18"	12.15" X 6.48" X 2.18"	14" X 10" X 3"	17" X 13" X 3"
<b>CLASSIFICATION</b>	CLASS 2	CLASS 2	CLASS 2	CLASS 2
<b>T-BAR MOUNTING</b>	PSB-96W-UNI-24VDC-TB	PSB-2X96W-UNI-24VDC-TB	PSB-3X96W-UNI-24VDC-TB	PSB-4X96W-UNI-24VDC-TB
<b>IN-WALL MOUNTING</b>	PSB-96W-UNI-24VDC-IW	PSB-2X96W-UNI-24VDC-IW	NA	NA

ELV DIMMING & CONTROLS				
LUTRON DIVA: DVELV-300P	•	•	•	•
LUTRON SKYLARK: SELV-300P	•	•	•	•
LUTRON RADIO RA2: RRD-6NA	•	•	•	•
LUTRON MAESTRO: MAELV-600	•	•	•	•
LEGRAND ADORNE: ADTP-703TUM4	•	•	•	•

0-10 DIMMING & CONTROLS				
PHILIPS SUNRISE: SR1200ZTUNV	•	•	•	•
LUTRON DIVA: DDTV-WH, DVSTV-WH	•	•	•	•
LUTRON NOVA T: NTSTV-DV-XX	•	•	•	•
LUTRON GRAFIX EYE QS: QSGRJ-XP	•	•	•	•
LUTRON RADIO RA2: RRD-10ND	•	•	•	•
LEVITON: LEV40050	•	•	•	•
LEVITON IP710-LFZ	•	•	•	•
LEGRAND: ADPD4FBL3P2W4	•	•	•	•

TRIAC DIMMING & CONTROLS				
LUTRON SKYLARK: S2-L-WH	•	•	•	•
LUTRON DIVA DVLV-600P-WH	•	•	•	•
LUTRON DIVA DVLV-603P-WH	•	•	•	•
LUTRON MAESTRO MALV-600-WH	•	•	•	•
LUTRON MAESTRO MALV-1000-WH	•	•	•	•
LUTRON MAESTRO MA-R-XX	•	•	•	•

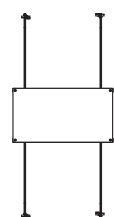
- Flicker free dimming
- Aluminum casing for optimal heat dissipation
- Isolated output power per NEC and UL safety requirements
- UL & ETL recognized/ listed, meets UL 8750, 1310 requirements
- Auto-reset; short circuit, overload and thermal protection
- Class 2 power supply
- Efficient, High power factor > 0.90

\*Title 24 with JAB listed PureEdge products and systems

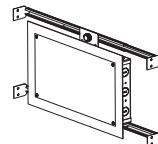
\*Tunable White requires Dual power Supplies and Controls. For single control use with our proprietary Tunable White Controller CDMX-1, refer to Universal Tunable White Power Supply Specifications. Up + Down Light fixtures and Systems can be controlled individually or together depending on the power supply selection.

**T-BAR Mounting Kit:** Includes power supply, box cover, and T-bar hangers for installing Junction Box above ceiling with in easy reach. Comes with 4' of 14 gauge pair Teflon cables with quick secure connectors.

**Ordering Codes :** PSB-40W-UNI-24VDC-TB, PSB-60W-UNI-24VDC-TB, PSB-96W-UNI-24VDC-TB, PSB-2X40W-UNI-24VDC-TB, PSB-2X60W-UNI-24VDC-TB, PSB-2X96W-UNI-24VDC-TB, PSB-3X96W-UNI-24VDC-TB, PSB-4X96W-UNI-24VDC-TB



- The Solid State Constant Voltage Uni-Power Supply is compatible with most commercially available Dimmers:
  - Triac Dimmer: (Forward Phase) Typically used for the dimming of Incandescent and Low Voltage Magnetic Transformers
  - ELV Dimmer: (Reverse Phase) Dimming of Electronic Low Voltage Transformers and Power Supplies used for LED lighting
  - 0-10 Dimmer: Dims the Low Voltage side of a 0-10 volt power supply commonly used in large scale lighting or commercial applications.
- The Uni-Power Supply is recommended with any Siemens/Murray brand of arc fault breaker to overcome the issues with tripping the breakers with an ELV LED Low Voltage Drivers.



**In-Wall Mounting Kit:** Includes power supply, box cover and stud hangers for installing Junction Box in wall. Select "IW" in the options section of compatible power supply ordering codes if an In-Wall Mounting Kit is needed.

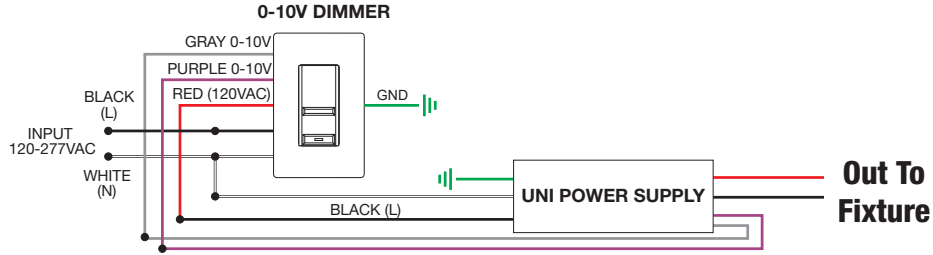
**Ordering Codes 5.1" x 14.25":** PSB-40W-UNI-24VDC-IW, PSB-60W-UNI-24VDC-IW, PSB-96W-UNI-24VDC-IW  
**Ordering Codes 8.5" x 14.25":** PSB-2X40W-UNI-24VDC-IW, PSB-2X60W-UNI-24VDC-IW, PSB-2X96W-UNI-24VDC-IW

PROJECT	FIXTURE TYPE	DATE
---------	--------------	------

**WIRING DIAGRAMS UNIVERSAL POWER SUPPLY**

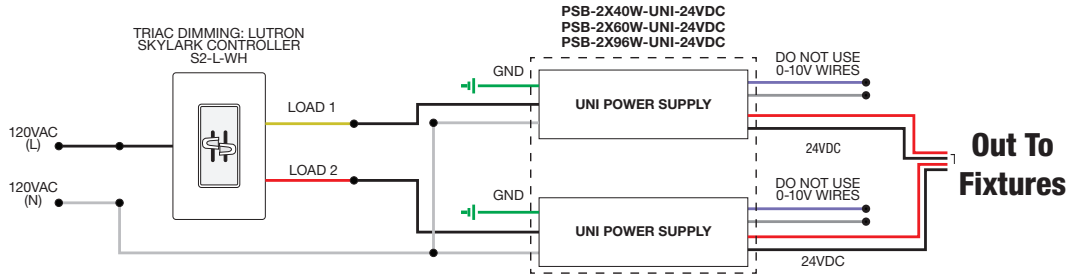
**Application:** 0-10V dimming for Static White

**Dimming:** Dimmable with 0-10V dimmer: Philips Sunrise: SR1200ZTUNV; Lutron Diva: DVTV-WH, DVSTV-WH; Lutron Nova T: NTSTV-DV-XX; Lutron Grafix EYE QS: QSGRJ-XP; Lutron Radio Ra2: RRD-10ND; Leviton: LEV40050; Leviton IP710-LFZ; Legrand: ADPD4FBL3P2W4



**Application:** Triac dimming for two power supplies, use for Static White

**Dimming:** Dimmable with Triac dimmer: Lutron: Skylark S2-L



PROJECT		FIXTURE TYPE		DATE	
---------	--	--------------	--	------	--