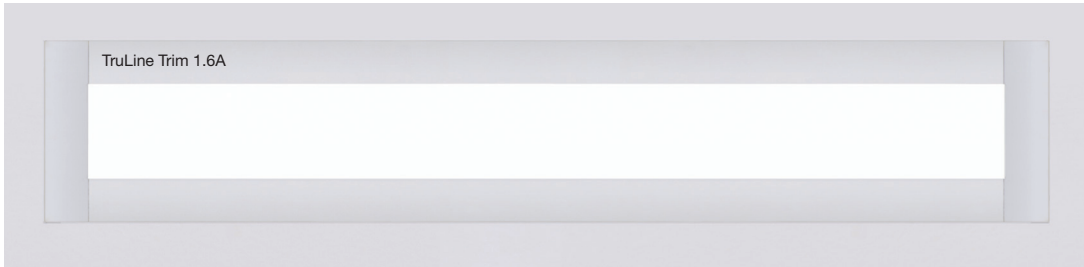


# TRULINE TRIM 1.6A TRUCOLOR™ RGB & TUNABLE WHITE

24VDC, 5/8" RECESSED LED SYSTEM

DESIGNED BY GREGORY KAY | ASSEMBLED IN AMERICA

REV 08.28.23



## Let the Drywall Be Your Canvas

### DESCRIPTION

Truline Trim 1.6A with the **TruColor™ RGBTW** light engine is another original and innovative design that comes from the family of recessed 24VDC systems pioneered by PureEdge that recess into any surface at least 5/8" thick without having to modify framing or surrounding construction. Truline Trim has a .5" finished flange that allows it to be recessed into any surface including wood, tile, cement, or drywall. Redefining the relationship between Lighting and Interior Design, this innovative and highly efficient system blends seamlessly into the drywall, becoming part of the architecture. The Power Feeds included with this fixture contain a 5-Channel WiZ Pro CV Bridgebox allowing for wireless control of the Truline Trim luminaire with the WiZ Pro software suite and Pure Smart Wi-Fi Room Controller. The slim extrusions, LED strips, and lenses are field-cuttable and ordered in 1' increments (up to 20' before re-feeding). Multiple runs of channel mount flawlessly together providing smooth and glare-free general illumination using designer-grade color rendering LEDs (97+ CRI). With the ability to run in vertical, horizontal, and diagonal directions, the compositions are truly endless. TruLine Trim recessed LED System is offered in multiple color temperatures and wattage options. Click here for all [Other Color Temperatures](#). Includes a 5-year pro-rated warranty. For custom quotes and layout assistance, send your drawings and ideas to our design team: [design@PureEdgeLighting.com](mailto:design@PureEdgeLighting.com).

### DESIGN NOTE

TruLine Trim 1.6A can be installed on a single surface, join runs on multiple planes from wall to ceiling, or from one wall to an adjacent wall. Use TruLine Trim 1.6A DIY with pre-formed components to create desired configurations, including Mitered Picture Frame and Outside or Inside Corners for room wrapping installations. Create square or rectangular compositions with [TruQuad Trim 1.6A](#).

### ORDERING & INSTALLATION

Truline Trim 1.6A may be secured to studs spaced 13"-24" apart or between studs with provided mounting straps. Order in 1' increments, field-cuttable to any length. Requires Remote Power Supply PSBR-96W-24VDC(ordered separately).

### SPECIFICATIONS

- 24VDC
- 10W10: 2x5W RGB & 2x5W Tunable White
- 10W14: 2x5W RGB & 2x7W Tunable White

### MAXIMUM LENGTH BEFORE RE-FEEDING

- 10W10 - Pure Smart WiZ Pro: 20ft
- 10W14 - Pure Smart WiZ Pro: 12ft

### TRUCOLOR™ RGB & TUNABLE WHITE LIGHT ENGINE

Pure Smart **TruColor™** technology uses five channels of tunable LEDs, composed of **RGBTW** red, blue, green, and Tunable White (**1500K-6500K**). With our precision-engineered, proprietary color mixing, we produce one of the widest, most accurate spectrums available, giving our customers access to the warm glow of the sunset (1500K-2400K golden hour) to the pure white light of the mid-day sun (5700K) and everything in between. **TruColor™** LED's achieve an average CRI-Color Rendering Index of 97+ and a Duv of +-0.0020 in relation to the blackbody curve at any point on the spectrum of tunable white CCT. Dynamic Color Changing functionality provides millions of possibilities for intricate customization, rich saturated secondary colors, and unprecedented ease of installation, making **RGBTW** the ideal choice for residential and commercial applications. **TruColor™ RGBTW** adds more than just decorative flexibility; it also helps to support a healthy Circadian Rhythm and well-being. Let **TruColor™** transform your space and the people within it. **TruColor™ RGBTW** is optimized for control with WiZ Pro Wi-Fi based smart control system.

### LUMEN PERFORMANCE

- TruColor™ RGBTW** Red, Green, and Blue with Tunable White (1500K-6500K)
- 10W10 578 LM/FT 2x5W @3000K
  - 10W14 963LM/FT 2x7W @3000K

### AVERAGE PERFORMANCE 2000K-5500K

- Average CRI (10W10): 97+
- Average DUV (10W14): +-0.0002
- Average R9: 91, Rg: 102, Rf: 93
- Average life: 50,000 hours

### REMOTE POWER SUPPLIES, DIMMERS & CONTROLS (SOLD SEPARATELY)

24VDC, Class 2 wiring

- [Pure Smart™ WiZ Pro PSBR Power Supplies](#)

Pure Smart™ PSBR Power Supply for Remote Bridgebox is developed to support Pure Smart TC TruColor RGBTW luminaires connected by WiZ Pro.

- [Pure Smart™ Wi-Fi Controller](#)

Features ON/OFF buttons, CCT and brightness control as well as four preset/custom scenes programmable in the WiZ app. Communicates via 2.4GHz Wi-Fi. No Hub needed. Voice control with Goggle Assistant, Alexa, Siri, Shortcuts, and IFTTT

### APPLICATIONS

Designed for any indoor space including cement, tile, millwork, and drywall. Ideal applications in residential, commercial, retail, and hospitality environments.

### COMPLIANCE

ETL, Class 2, RoHS, Damp Location, Made in USA.

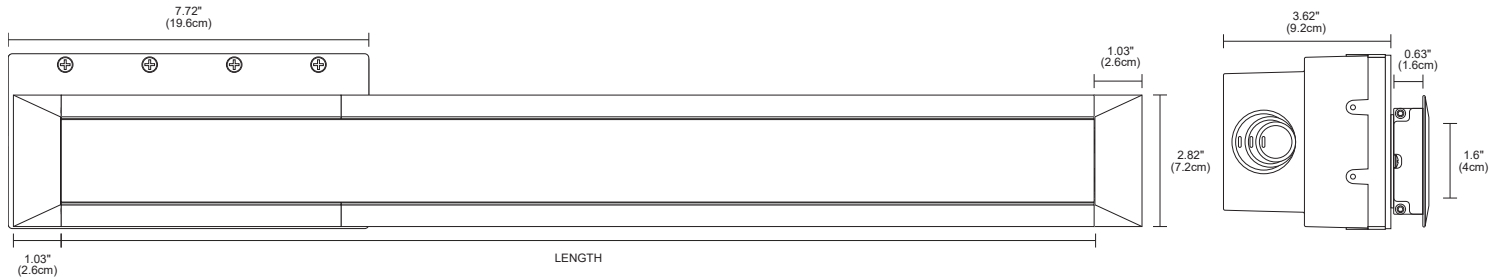
System	Watts Per Foot	Control System	Length in Feet	Color Temperature	Finish
<b>TTL1.6A</b>	<b>10W10</b>	<b>WZ</b>	<b>20FT</b>	<b>TC</b>	<b>WH</b>
<b>TTL1.6A</b> Truline 1.6A	<b>10W10</b> 2x5watts RGB & 2x5 watts Tunable White <b>10W14</b> 2x5watts RGB & 2x7 watts Tunable White	<b>WZ</b> WiZ Pro Connected CV Smart Bridgebox Included	<b>1-20FT</b> <b>1-12FT</b>	<b>TC</b> TruColor RGBTW, Red, Blue, Green Tunable 1500K-6500K	<b>WH</b> White <b>BK</b> Black <b>CU</b> Custom
PROJECT	FIXTURE TYPE			DATE	

# TRULINE TRIM 1.6A TRUCOLOR™ RGB & TUNABLE WHITE 24VDC, 5/8" RECESSED LED SYSTEM

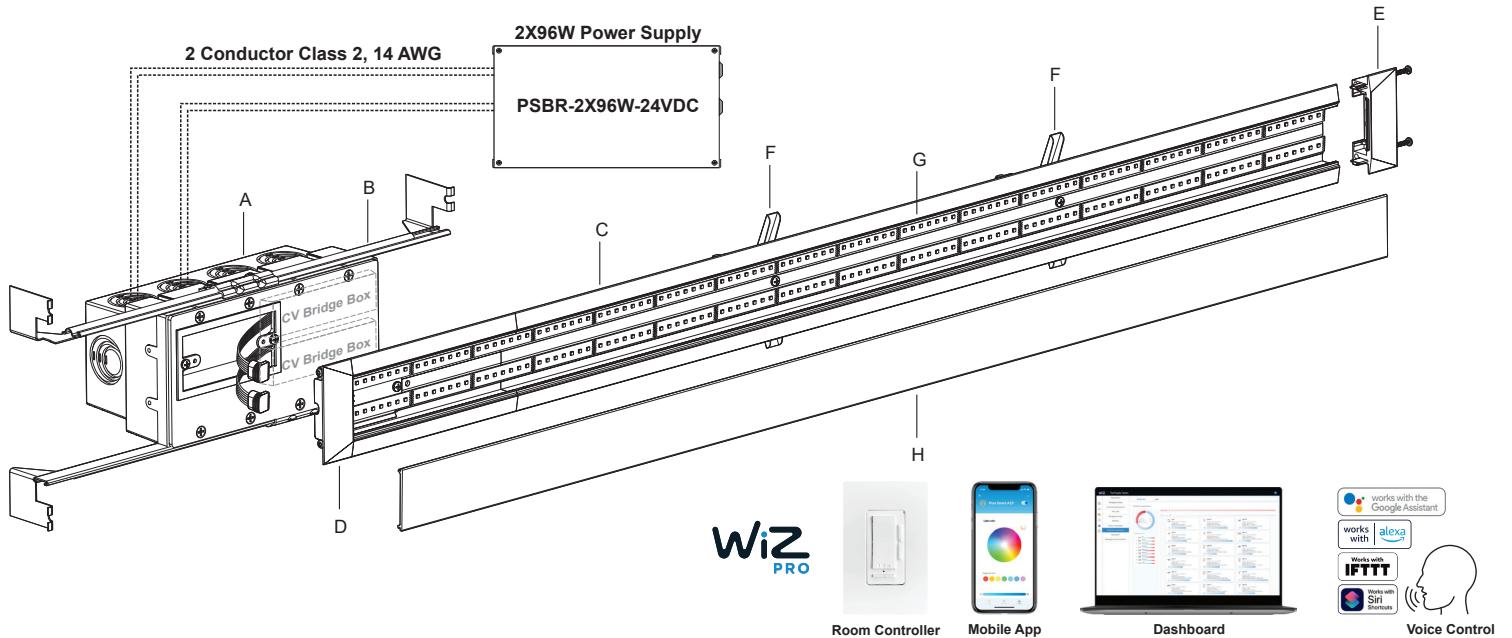
REV 08.28.23

## NOMINAL DELIVERED LUMENS

DESCRIPTION	10W10 (2X 5 WATTS RGB & 5 WATTS TUNABLE WHITE)										10W14 (2X 5 WATTS RGB & 7 WATTS TUNABLE WHITE)									
WATTS PER FOOT	10W Tunable White										14W Tunable White									
COLOR TEMPERATURE	20K	22K	24K	27K	30K	35K	40K	57K	65K		20K	22K	24K	27K	30K	35K	40K	57K	65K	
LUMENS PER FOOT (lm/ft)	274	411	499	559	578	610	658	462	426		338	564	724	822	843	888	870	511	463	
LUMENS PER WATT (lm/w)	73	90	88	132	136	103	157	116	177		101	147	118	138	137	144	149	148	154	
CRI	91.8	93.8	94.5	94.9	95.5	96.9	97.2	92.1	89.8		93	95	96	97	97	98	97	95	93	
Duv	-0.004	-0.0012	-0.0034	-0.0058	-0.0055	-0.0033	-0.0014	-0.0049	-0.0063		-0.0030	0.0002	0.0030	0.0030	0.0030	0.0009	0.0000	0.0030	0.0030	
Rf	91	93	94	94	95	94	94	92	90		92	93	95	95	95	95	94	92	91	
Rg	105	101	103	105	104	102	100	102	103		104	100	102	103	103	101	100	102	103	
R9	90	90	90	94	97	97	91	81	70		91	90	90	94	95	93	93	79	67	
R13	92	94	95	95	94	96	99	90	87		92	95	96	96	97	99	99	91	88	
R15	99	99	99	98	97	97	97	89	85		99	99	99	99	99	98	97	90	85	
WATTS/FOOT	2.7	4.55	4.35	4.25	4.25	4.35	4.2	2.95	2.4		3.35	3.85	6.15	5.95	6.15	6.15	5.84	3.45	3	



## INCLUDED COMPONENTS



### A. JUNCTION BOX

Mounts behind drywall or other surface with Adjustable Mounting Bars. Low Voltage 24VDC wires from Remote Power Supply connect to LED wires inside box. Contains 2 CV Bridgeboxes per power feed which allows for wireless control with the WiZ Pro Software Suite or the Pure Smart Wi-Fi Room Controller. Junction Box opening is covered by the channel, and required at the beginning of each run.

### B. ADJUSTABLE MOUNTING BARS

Provide flexibility for mounting in a variety of spaces and orientations. May be secured to studs that are spaced 13"-24" apart.

### C. TRULINE TRIM 1.6A CHANNEL

5/8" deep extrusion house for two rows of LED Strips.

### D. POWER END CAP

Provides a finished look and prevents light leak at feed-end of runs where LED Strip enters the channel.

### E. TAKE-UP BOX

Prevents dark spots at the end of a run by tucking excess LED Strip safely behind wall.

### F. TOGGLE BOLT AND SCREW

Secures channel to drywall and stud.

### G. LED STRIPS

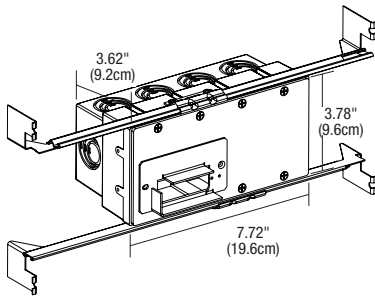
Your selection of LED Strip CCT. TruLine 1.6A comes with two LED Strips.

### H. LENS

1.6" wide diffused white lens projects a clean line of light without pixelation.

PROJECT	FIXTURE TYPE	DATE
---------	--------------	------

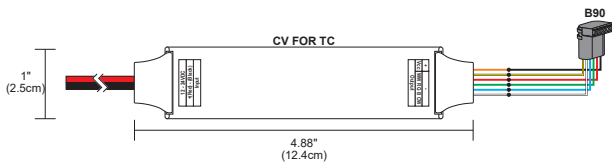
# **TRULINE TRIM 1.6A TRUCOLOR™ RGB & TUNABLE WHITE** 24VDC, 5/8" RECESSED LED SYSTEM



## **PURE SMART 4 GANG JUNCTION BOX WITH MOUNTING PLATE (INCLUDED WITH TL1.6A COMPLETE FIXTURE ORDERING CODE)**

Includes a 4 gang Junction Box with adjustable bar hangers. This part can be quick shipped if needed for rough in. Two Class 2, 14 AWG stranded conductors from remote located power supply to 4 gang Junction Box.


System	Type
<b>TTL1.6A</b>	<b>1RE4G</b>
TTL1.6A TruLine 1.6A	1RE4G 1" Rectangle End Feed with 4 Gang Junction Box

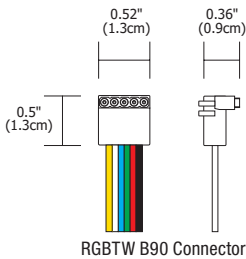


## **PURE SMART/WIZ PRO CV BRIDGEBOX**

Two WiZ Pro CV Bridgeboxes are included with TruLine Trim 1.6A RGBTW ordering codes. The part numbers below are to be used for replacement only. Pure Smart/WiZ Pro CV Bridgeboxes are pre-programmed with Pure Smart app icons, and proprietary color mixing for tunable white and RGBTW.

Type	Type	Component	Color Temperature Options	System
<b>BR</b>	<b>B90</b>	<b>CV96W</b>	<b>TC5W5</b>	<b>RL</b>
BR Bridgebox	B90 90° Connector	CV96W Slim Profile WiZ Bridgebox	TC5W5 TruColor™ RGBTW 5 watts RGB & 5 watts Tunable White TC5W7 TruColor™ RGBTW 5 watts RGB & 7 watts Tunable White	RL Recessed Linear





## **B90 CONNECTORS**

B90 Connectors are supplied with End Power Components. The ordering code below is to be used for replacements only.

System	Type	Component	Color Temperature Options
<b>LC</b>	<b>PFE</b>	<b>B90</b>	<b>RGBTW</b>
LC LED Connector	PFE Power Feed	B90 Bends 90°	RGBTW TruColor™ RGBTW (RGB + Tunable White 1500k-6500K)

**LENGTH LOAD CHARTS:** To determine the necessary wire gauge use our [Voltage Drop Calculator](#).

10 WATTS PER FOOT (2 X 5W)	
LENGTH IN FEET	WATTS
1	10
2	19
3	29
4	38
5	48
6	58
7	67
8	77

14 WATTS PER FOOT (2 X 7W)	
LENGTH IN FEET	WATTS
1	14
2	28
3	42
4	56
5	70
6	84

PROJECT		FIXTURE TYPE		DATE	
---------	--	--------------	--	------	--

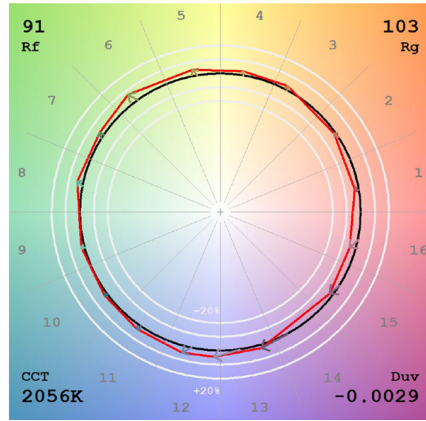
# LED STRIP TM30 DATA

24VDC, 5/8" RECESSED LED SYSTEM

**TM-30-15 DATA:** The data below is for TruColor<sup>TM</sup> RGBTW (S5W7) bare LED Strips. Consistent color temperatures throughout a single strip and among multiple strips is possible through a 3 phase binning process in which each order is inspected with a color meter to ensure uniformity.

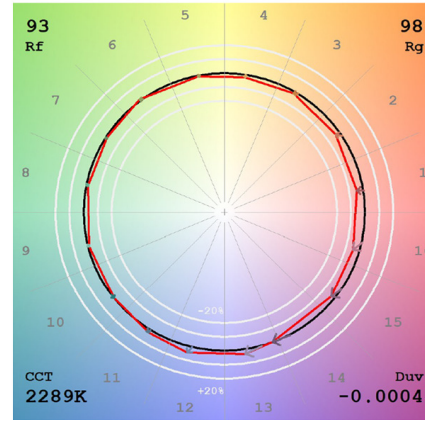
## 2000K (TruColor<sup>TM</sup> RGBTW)

View Angle: 2 Deg



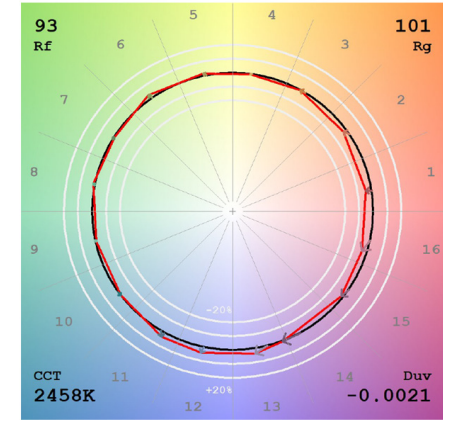
## 2200K (TruColor<sup>TM</sup> RGBTW)

View Angle: 2 Deg



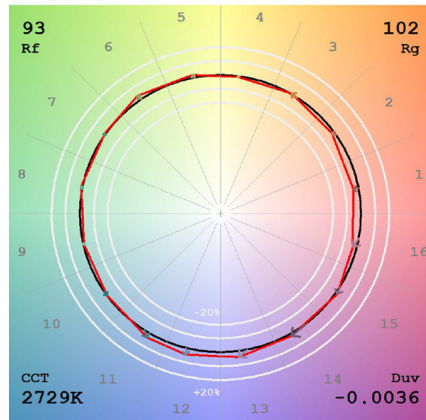
## 2400K (TruColor<sup>TM</sup> RGBTW)

View Angle: 2 Deg



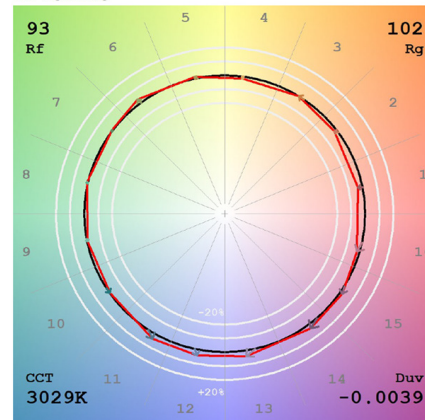
## 2700K (TruColor<sup>TM</sup> RGBTW)

View Angle: 2 Deg



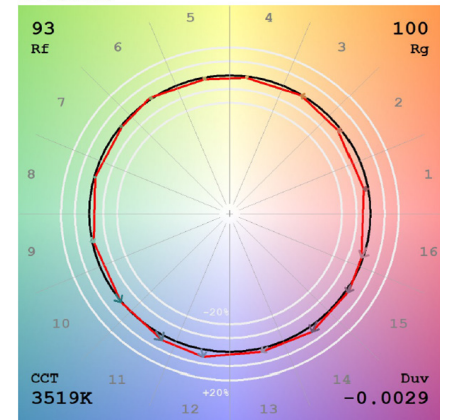
## 3000K (TruColor<sup>TM</sup> RGBTW)

View Angle: 2 Deg



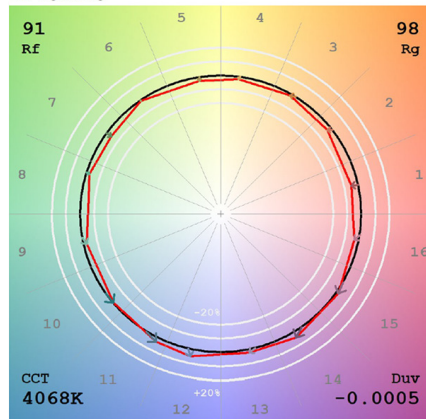
## 3500K (TruColor<sup>TM</sup> RGBTW)

View Angle: 2 Deg



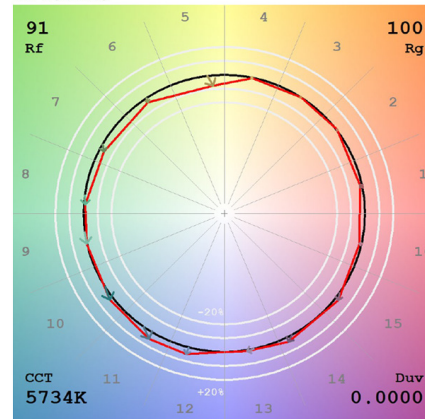
## 4000K (TruColor<sup>TM</sup> RGBTW)

View Angle: 2 Deg



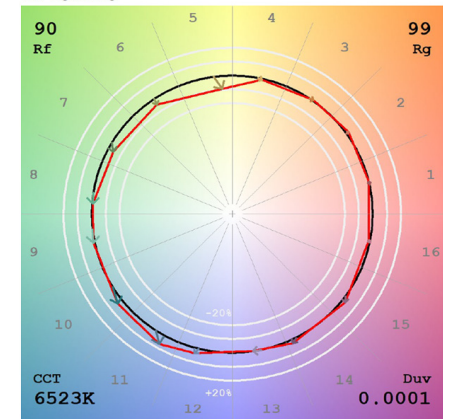
## 5700K (TruColor<sup>TM</sup> RGBTW)

View Angle: 2 Deg



## 6500K (TruColor<sup>TM</sup> RGBTW)

View Angle: 2 Deg



PROJECT		FIXTURE TYPE		DATE	
---------	--	--------------	--	------	--