

VANISHING POINT 24VDC SYSTEM

GRIP JACK CEILING COAXIAL CABLE CONNECTION FOR SUSPENSIONS

DESIGNED BY GREGORY KAY | ASSEMBLED IN AMERICA | US PATENT PENDING

REV 06.05.24



DESCRIPTION

The Vanishing Point Grip Jack Coaxial Cable connection system is a ground breaking paradigm shift to the way the world sees any luminaire, the epitome of refinement eliminates the unattractive canopy we have all accepted as unavoidable until now. The vanishing point is the only genuinely trimless and flush design available on the market as the suspension cables disappear into the ceiling. Combine this system with any Pure Edge linear suspension*. The system offers four distinct mounting options for drywall and millwork, allowing any space to achieve a minimal and continuous architecture. Patent Pending. For custom quotes and layout assistance, send your drawings and ideas to our design team: design@PureEdgeLighting.com.

DRYWALL APPLICATIONS (PLASTER-IN)

VR - Vanishing Point Remote Power Supply for Drywall does not have a visible canopy line, just the small 0.15" point of connection where the coaxial cable disappears into the ceiling. The 24VDC remote power supply is required and sold separately.

V2P - ELV Power Supply fits within the junction box. The plaster-in and paint plate allows for the slightest outline of the 2.0" round canopy. 24VDC/50W IC or 60W Non-IC ELV.

MILLWORK APPLICATIONS

V2MR - Connection point at ceiling 2.0" canopy sits flush in Millwork ceilings for a clean look. 24V remote Power Supply (order separately).

V2MP - Connection point at ceiling 2.0" canopy sits flush in Millwork ceilings. Power Supply that fits inside the junction box. 24VDC/50W IC or 60W Non-IC ELV.

REMOTE POWER SUPPLIES*, DIMMERS & CONTROLS (SOLD SEPARATELY)

- 24VDC, Class 2 Wiring
- [UNI Driver: Universal Dimming \(TRIAC, ELV, 0-10V\)](#)

*In-Wall Mounting and drop ceiling Kits available for select power supplies

ACCESSORIES

VR-CG - .043" Non-Power Cable Grip for Drywall

CONNECTION TYPES

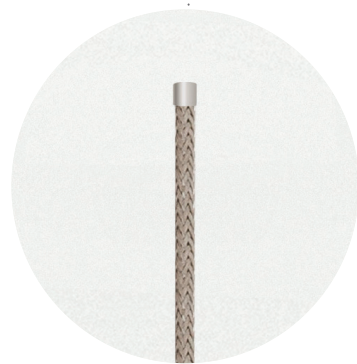
Use on 24VDC PureEdge Coaxial cable End feed linear fixtures. Refer to Vanishing Dual Grip Jack Specifications for Dynamic Tunable White and fixtures with both direct and indirect lighting (Up and Down).

WARRANTY / LABELS

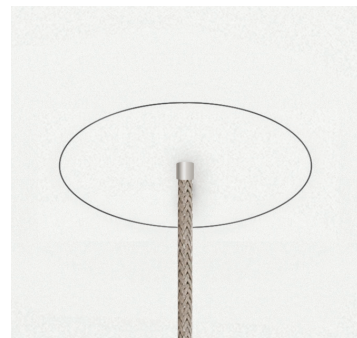
Prorated 5 year warranty. Made in America. ETL (Conforms to UL1598 and CSA 22.2 #250.0)

APPLICATIONS

Designed for indoor use only. Ideal applications in residential, commercial, retail and hospitality environments include not limited to kitchens, living rooms, dinning rooms, entryways, offices, conference rooms, architectural spaces, lobbies, large-scale public spaces, hotels, restaurants and luxury health spas.



VR-GJ24S-WH
Vanishing Point .150" Opening Plaster-In
Drywall, Remote Power supply (Order separately)



V2P-GJ24S-WH
Vanishing Point 2" Flush, Magnetic Canopy for
drywall, with ELV power supply in junction box



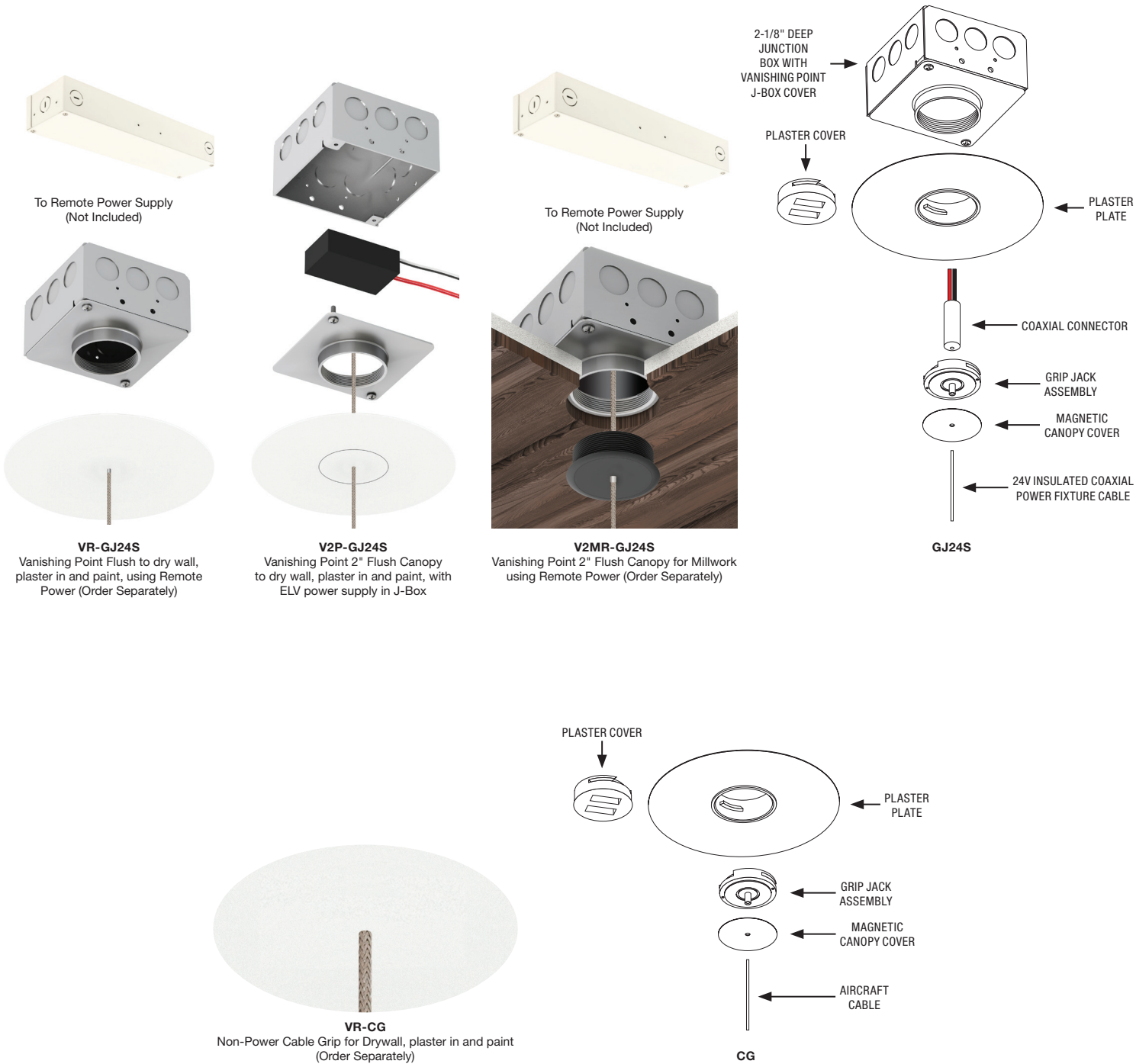
V2MR-GJ24S-BZ
Vanishing Point 2" Flush Canopy for Millwork,
with ELV power supply in the junction box

System	Type/Voltage	Finish
VR	GJ24S	WH
VR Vanishing Point 0.150" Connection Plaster in to Drywall, No Outline of Canopy at connection point. Remote Power Supply. V2P Vanishing Point 2.0" Connection Drywall flush mount canopy outline will show. ELV 24 VDC power supply included with J-Box. V2MR Vanishing Point 2.0" Millwork Flush-Mount Canopy, Remote 24 VDC Power Supply, for use with Millwork V2MP Vanishing Point 2.0" Flush-Mount Canopy, ELV 24 VDC 60W Power Supply fits in J-Box, for use with Millwork	GJ24S Grip Jack 24 volt Coaxial cable with plastic sheathing	WH White BK Black SN Satin Nickel BZ Bronze
System	Type/Voltage	
VR	CG	
VR Vanishing Point .043" Connection, Plastered in to Drywall. No Outline of Canopy at connection point	CG Non-Power Cable Grip. Max 33 lbs.	

PROJECT		FIXTURE TYPE		DATE	
---------	--	--------------	--	------	--

VANISHING POINT 24VDC SYSTEM

GRIP JACK CEILING COAXIAL CABLE CONNECTION FOR SUSPENSIONS



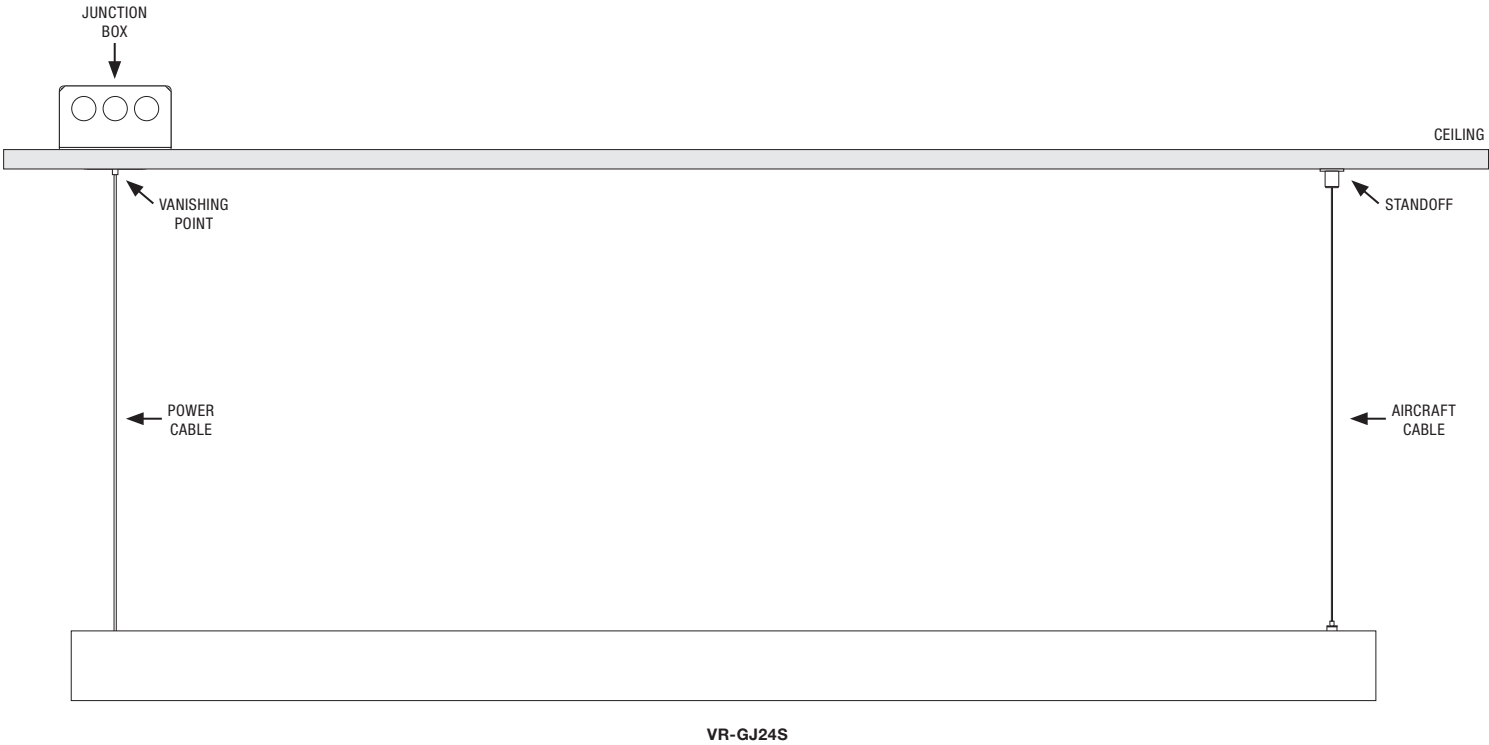
PROJECT		FIXTURE TYPE		DATE	
---------	--	--------------	--	------	--



VANISHING POINT 24VDC SYSTEM
GRIP JACK CEILING COAXIAL CABLE CONNECTION FOR SUSPENSIONS



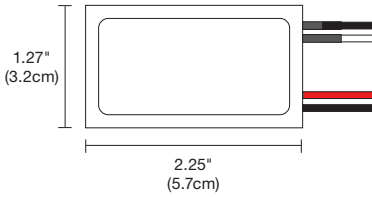
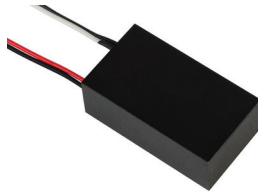
REV 06.05.24



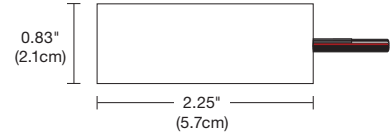
PROJECT		FIXTURE TYPE		DATE	
---------	--	--------------	--	------	--

INDOOR CONSTANT VOLTAGE REMOTE POWER SUPPLY

24VDC, PS-60L-ELV, DIMS TO 6%



Top View



Side View

DESCRIPTION

Compact, lightweight remote electronic LED Power Supply* converts standard 120VAC voltage to 24VDC and features a Soft Start, built in short circuit protection, overload protection, and thermal overload protection. The low voltage output may be dimmed using an electronic low voltage dimmer (Reverse Phase/Trailing Edge). The Power Supply is certified to be used inside a standard Junction Box enclosure. Indoor applications only. 40 watt options available for 240V and 277V inputs. For custom quotes and layout assistance, send your drawings and ideas to our design team: design@PureEdgeLighting.com.

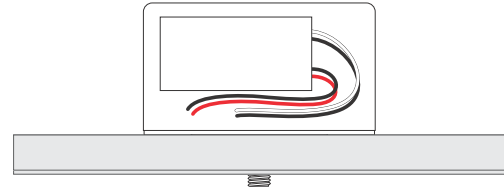
*Electrical Panels using Siemens/Murray AFCI breakers are not compatible with this ELV transformer. Use UNI driver power supplies with this breaker.
**ELV power supplies are not compatible with nLight, use only 0-10 volt or Uni driver power supplies

APPLICATIONS

Indoor*

*Maintain proper spacing among power supplies when multiple power supplies are installed in the same remote location.

POWER INPUT	120 volts AC, 60Hz
POWER OUTPUT	Class 2; 24 volts DC 2.5A 50 watt maximum, 40 watt for 240V or 277V inputs
DIMENSIONS	2.25" x 1.27" x 0.83"
DIMMER TYPE	Electronic Low Voltage Dimmer Lutron: Diva #DVELV-300P; Skylark #SELV-300P; Maestro #MAELV-600; Legrand Adorne ADTP703TU



Product	Wattage	Dimming	Voltage
PS	60L	ELV	24VDC
PS Power Supply	60L 60 Watt	ELV Electronic Low Voltage	24VDC 24 Volt DC

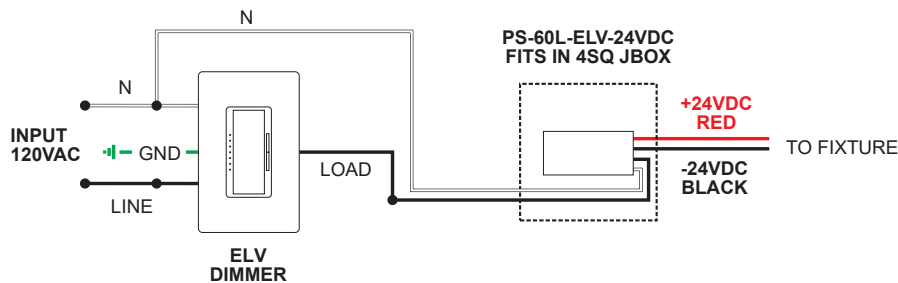
*50 watt maximum load

Product	Wattage	Dimming	Voltage	Input
PS	40W	ELV	24VDC	2
PS Power Supply	40W 40 Watt	ELV Electronic Low Voltage	24VDC 24 Volt DC	2 240VAC Input 3 277VAC Input

SAMPLE WIRING DIAGRAMS 24VDC ELV

Application: ELV dimming (Reverse Phase/Trailing Edge) for Static White

Dimming: Dimmable with ELV dimmer: Legrand Adorne ADTP703TU; Lutron: Diva DVELV-300P, Skylark SELV-300P, Maestro MAELV-600 and Radio Ra 2



PROJECT		FIXTURE TYPE		DATE	
---------	--	--------------	--	------	--