

# Roest™ Canopy

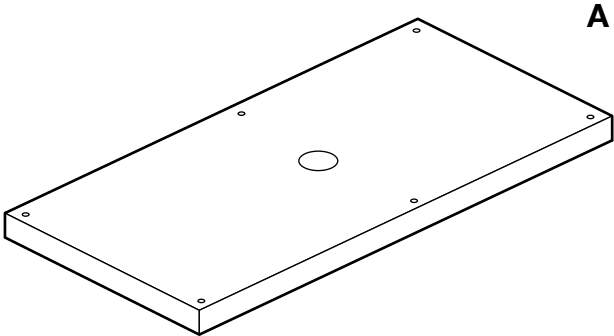
## Installation instructions

120V  
5W max per fixture (LED only)  
GU10 socket

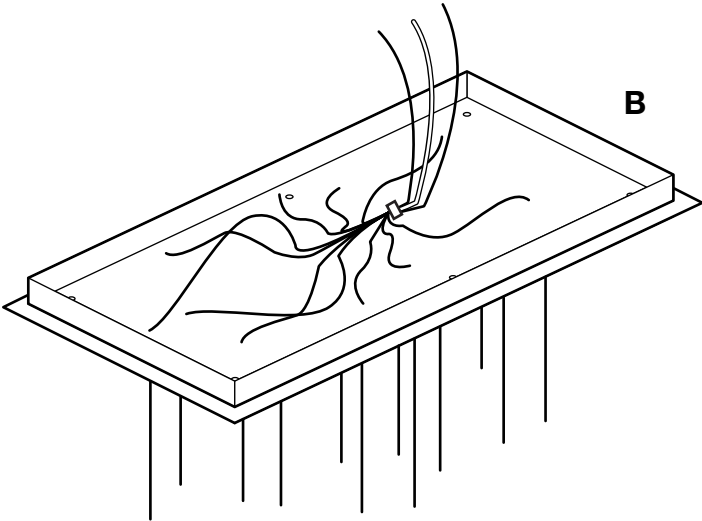
## Warranty

Graypants warrants its products against defects in material or workmanship for a period of 90 days from delivery. Repair or replacement of the product is the exclusive remedy of the consumer. To obtain warranty service, you must deliver the product in its original packaging, or packaging affording an equal degree of protection, to Graypants' Seattle factory. This warranty does not cover damage arising from wear and tear, or any willful damage, negligence, subjection to abnormal working conditions, failure to follow the seller's written instructions, misuse or alteration or repair of a product, or any other act or omission on the part of the consumer.

Flush Mounted Canopy Parts List



Canopy mounting plate (x1)



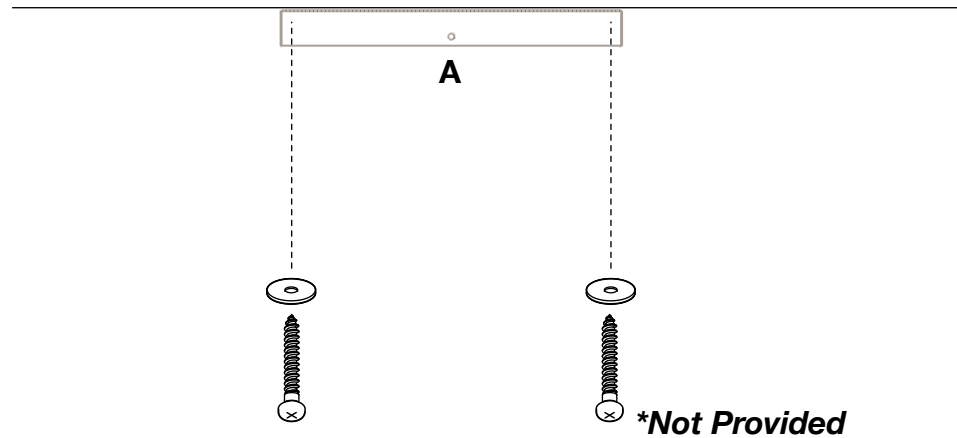
Wired canopy with pendants (x1)



Canopy bolts (x6)

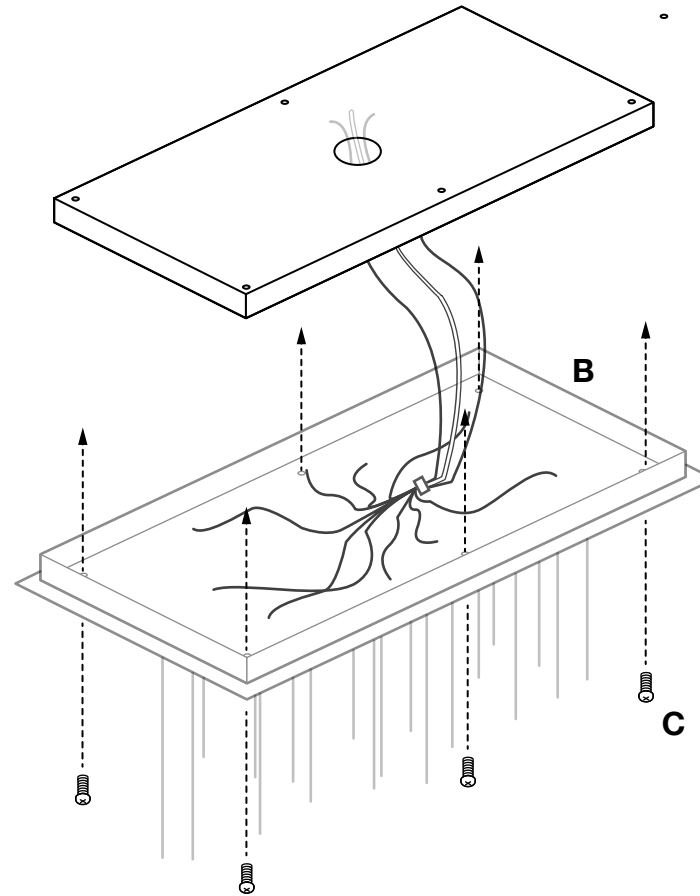
## Flush Mounted Canopy Installation

- 1 Open box directly below installation location
- 2 Mount **Plate (A)** to wood blocking in ceiling using anchors rated to hold the weight of the fixture (80lbs)  
**Note: Mounting anchor and hardware not provided. You will need to drill through mounting plate to mount into wood blocking.**

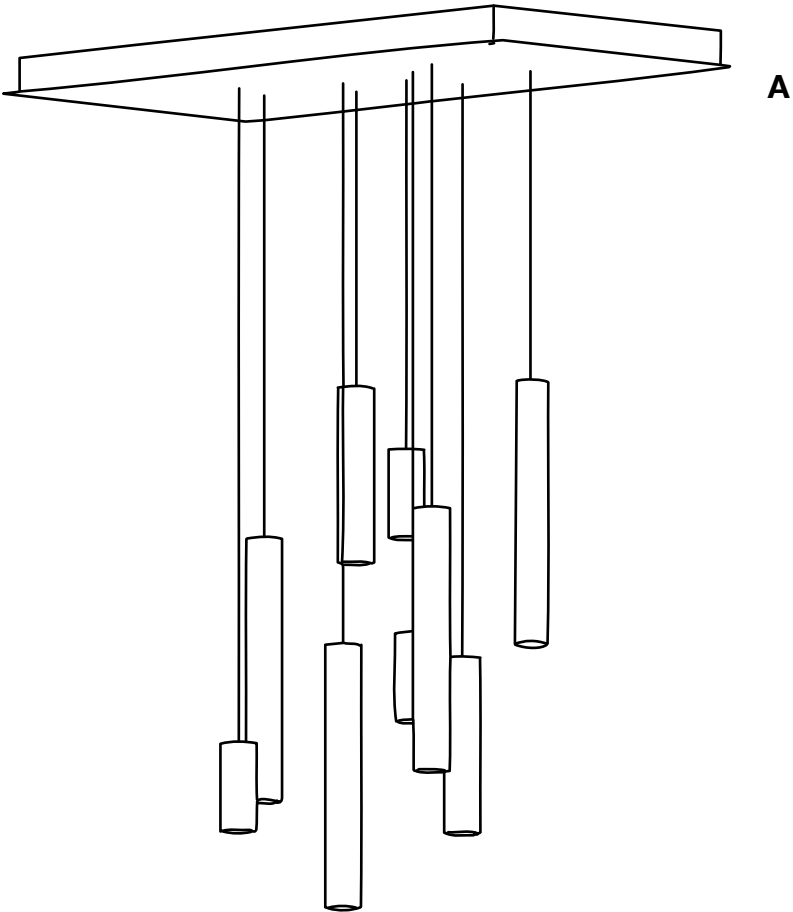


## Flush Mounted Canopy Installation

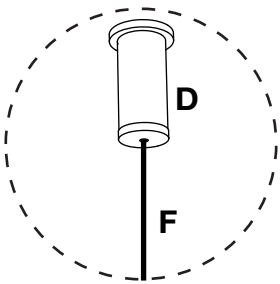
- 3 Connect the electrical feed from the building into the enclosed wiring hub assembly; black to line, white to neutral, green to ground
- 4 Raise the **Canopy (B)** into mounting plate and screw in supplied **Bolts (C)** into **Mounting Plate (A)**
- 5 Remove the wrapping materials and attach shades.



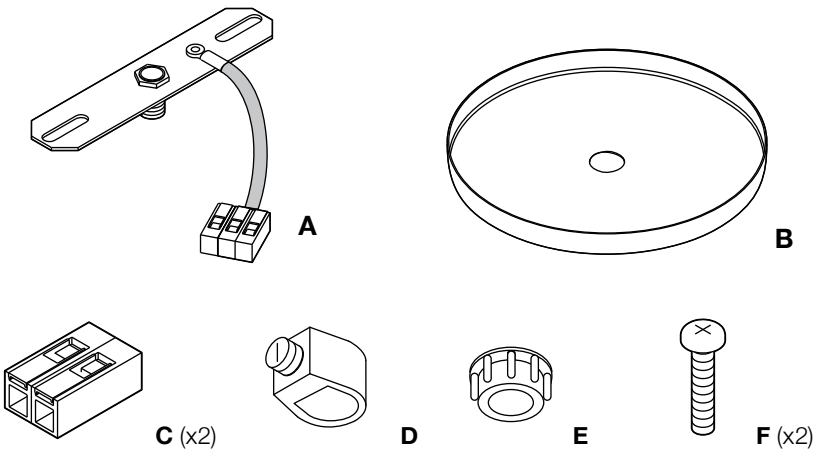
# Suspended Canopy Parts List



Wired canopy with installed cable grips & pendant cords



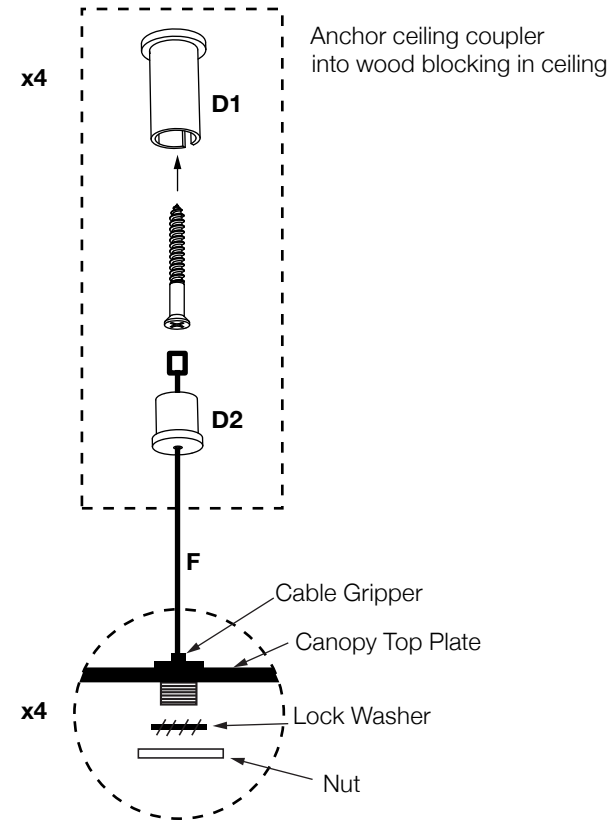
Suspension installation kit:  
cable grippers for ceiling (D)  
Aircraft cable (F)



Canopy installation kit

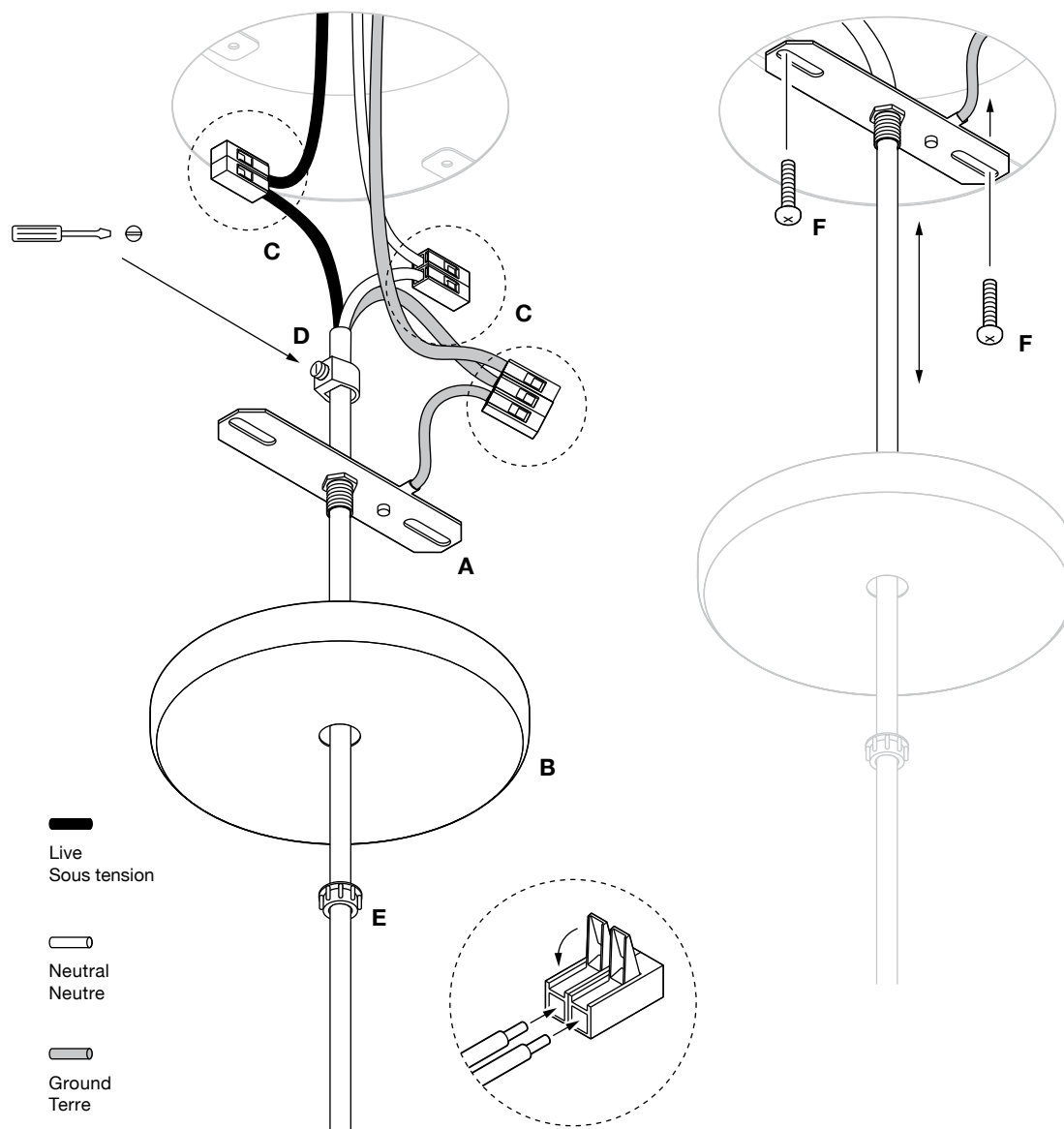
## Suspended Canopy Installation

- 1 Open box directly below installation location
- 2 Anchor ceiling coupler (**D**) into wood blocking in ceiling.
- 3 Connect the electrical feed from the building into the enclosed wiring hub assembly; black to line, white to neutral, green to ground
- 4 Adjust suspended canopy installation to desired height by feeding **Aircraft Cable (F)** through **Cable Grippers on canopy top plate (A)**



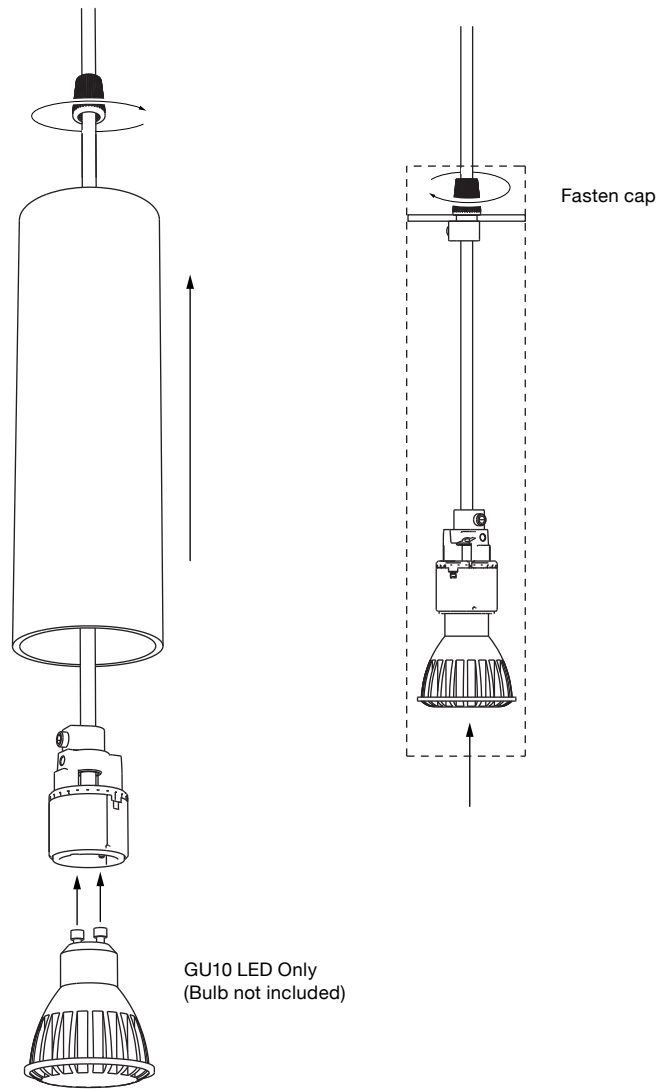
## Suspended Canopy Electrical Wiring

- 5 Connect the electrical cord from the canopy into the junction box through the included 4.5" diameter canopy as shown to the right; black to line, white to neutral, green to ground
- 6 Remove the wrapping materials





# Lamp Installation / Replacement



## Shade Installation

- 1** Remove the brass knurled nuts that are threaded onto the crossbar bolts.
- 2** Drop the socket assembly through the top of the roest shade, twist 90 degrees to align the crossbar bolts with the holes in the shade. Lower the shade onto the crossbar (process shown in images)
- 3** Reinstall and tighten the brass knurled nuts to ensure the shade is secured to the crossbar.

