



Input Voltage	120V AC
Wattage	6W
Nominal Lumens	550lm
CCT	3000K, 2700K
CRI/R9	90+, 54+
Color Fidelity (Rf), Gamut (Rg)	96, 100
Dimming	Phase Dimmable
Dimming Range	100% - <2.5%
Beam Angles	230°



**RoHS**



SunLight2® Builder's Edition LED bulbs are designed for applications where High CRI, great dimming performance, and reliability, are integrated in a cost-effective solution. SunLight2® builder's edition meets Energy Star & California Title 20 and 24 JA8 requirements.

### FEATURES

- **High CRI** - High CRI >90, R9 >54, TLCI 92 designed to provide superior color accuracy for residential, commercial and retail lighting applications
- **Low Flicker Index** - Providing an ideal and user health focused light source.
- **Energy Efficiency** - Energy efficient equivalent to 60W halogen bulb
- **Protection** - Suitable for use in both open and fully enclosed fixtures.
- **Fully Dimmable** - ELV, TRIAC dimmable

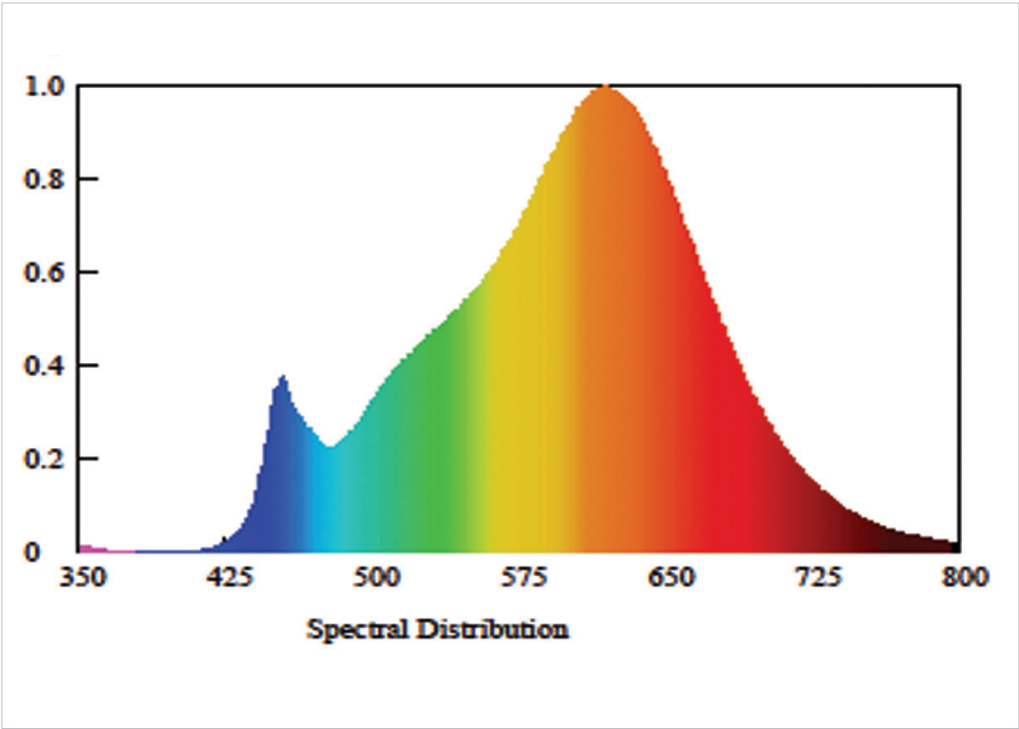
### APPLICATIONS

- Hotels & Hospitality
- Galleries & Museums
- High-End Retail
- Architectural track lighting, pendants, downlights, and other indoor and outdoor applications
- Suitable for damp locations

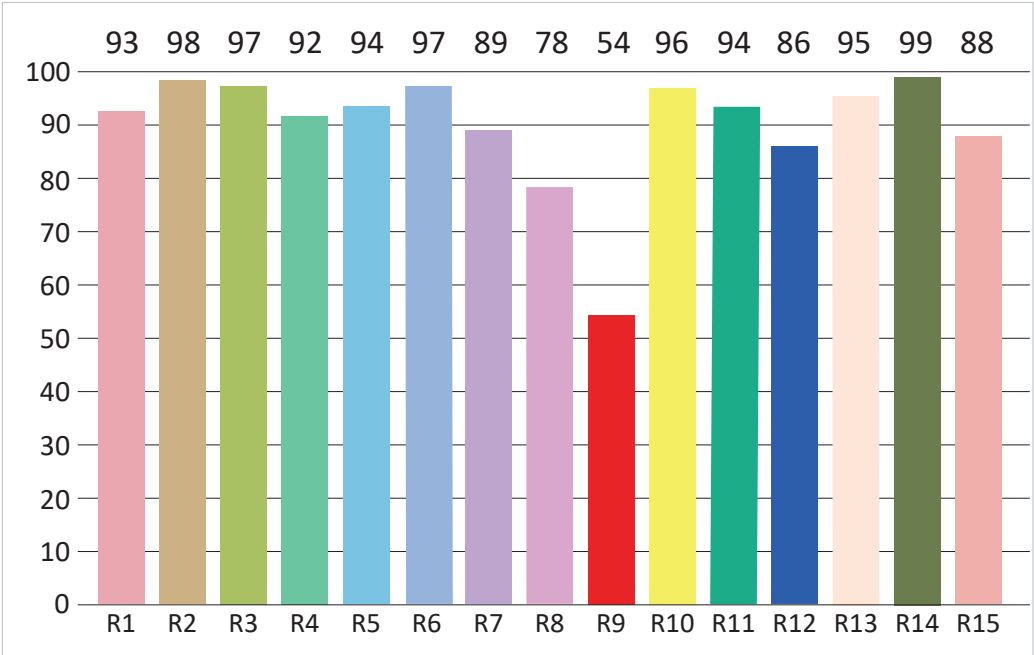
### MODEL SPECIFICATIONS

MODEL NUMBER	WATTS	INPUT VOLTAGE	CCT	LUMENS	BEAM ANGLE	CASE FINISHES
A19A6W2700K230W	6W	120VAC	2700K	500lm	230°	White
A19A6W3000K230W			3000K	550lm	230°	

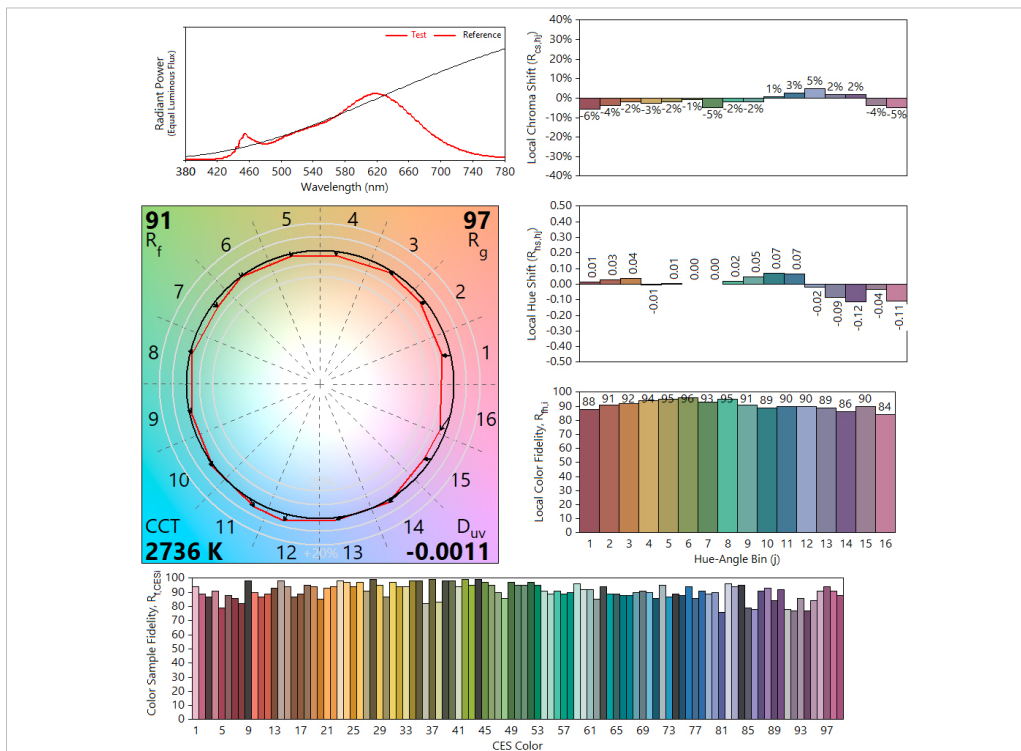
SPECTRORADIOMETRIC CHART



CRI TEST

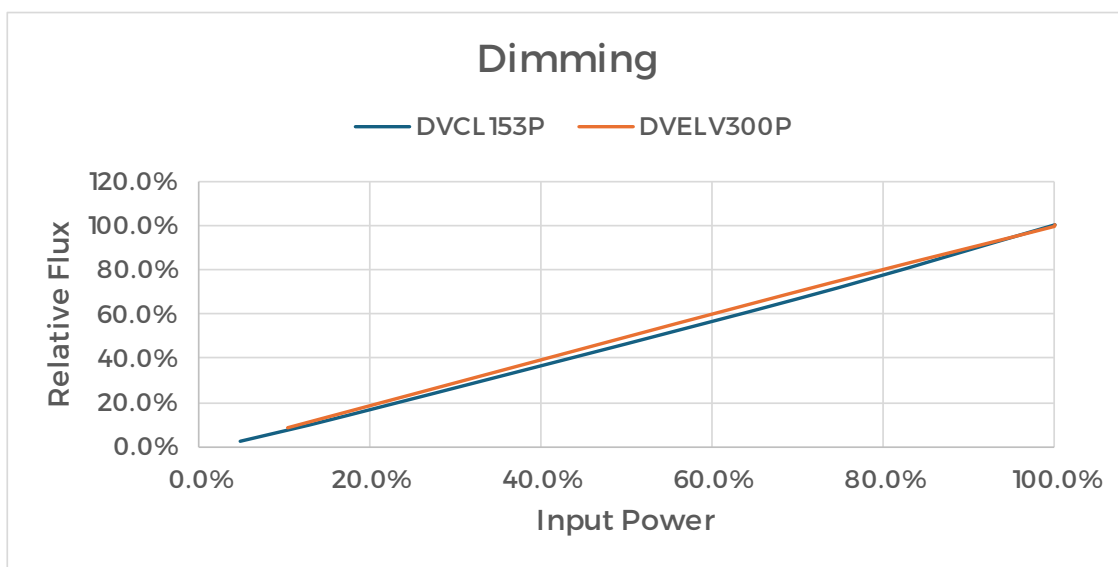


### TM30 TEST



\*Data shown based on A19A6W2700K230W model

### DIMMING CURVE



MECHANICAL SPECIFICATIONS

MODEL NUMBER	DIMENSIONS	SHIPPING WEIGHT
A19	108.2 x 60mm	53g

PACKING

A19 (Builder’s Edition)

