

MR167W12V SERIES

SunLight2® Builders Edition LED Bulbs



CRI	90+
R9	55+
Input Voltage	12V AC/DC
Nominal Wattage	7W
Nominal Lumens	500lm
Color Fidelity (Rf), Gamut (Rg)	92, 98
% Flicker	<1%
Beam Angles	15°, 35°



RoHS



SunLight2® Builder's Edition LED bulbs are designed for applications where High CRI, great dimming performance, and reliability, are integrated in a cost-effective solution. SunLight2® builder's edition meets Energy Star & California Title 20 and 24 JA8 requirements.

FEATURES

- **High CRI** - High CRI 90+, R9 55+, TLCI 92 designed to provide superior color accuracy for residential, commercial and retail lighting applications
- **Low Flicker Index** - Providing an ideal and user health focused light source.
- **Energy Efficiency** - Energy efficient equivalent to 50W halogen bulb
- **Protection** - Suitable for use in both open and fully enclosed fixtures.
- **Fully Dimmable** - ELV, TRIAC, 0-10V dimmable with certain power sources

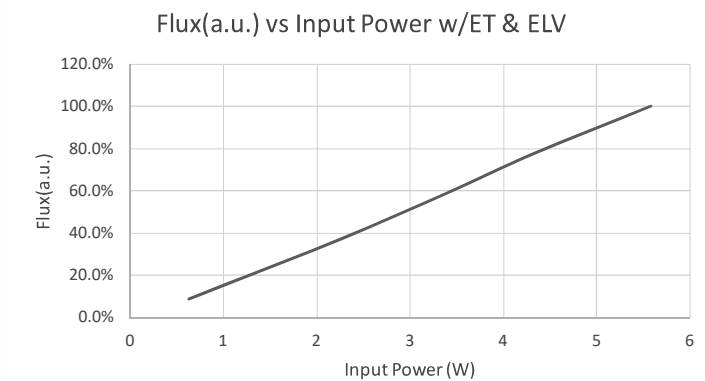
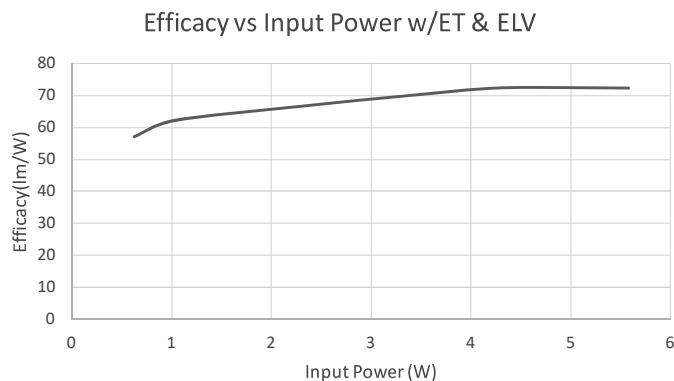
APPLICATIONS

- Hotels & Hospitality
- Galleries & Museums
- High-End Retail
- Architectural track lighting, pendants, downlights, and other indoor and outdoor applications
- Suitable for damp locations

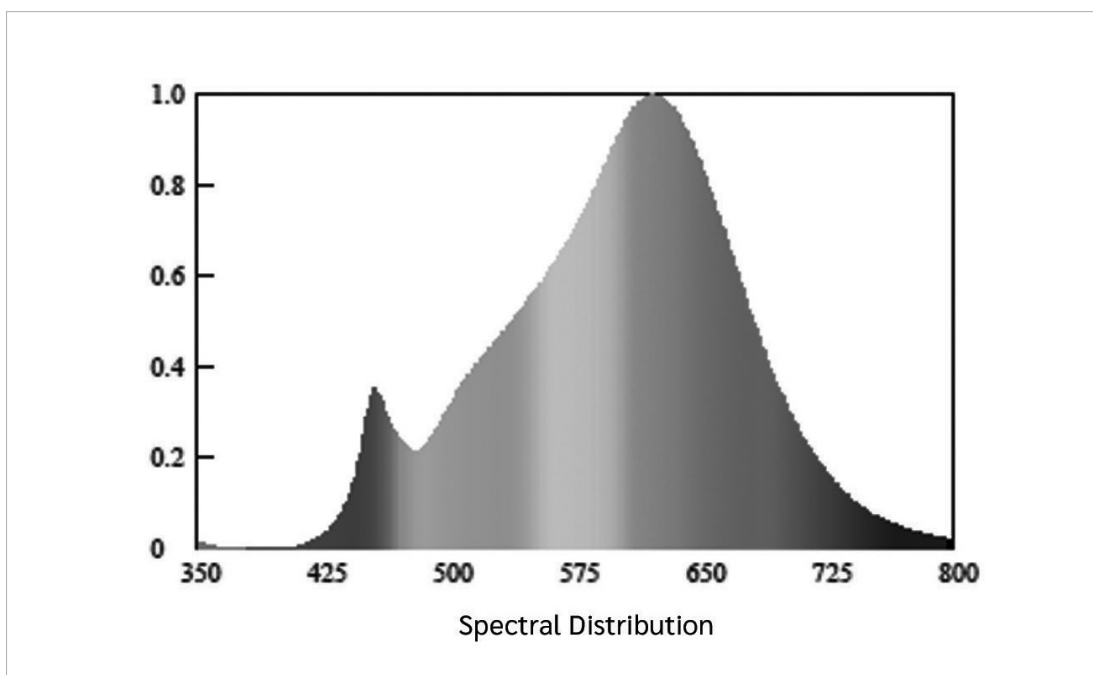
MODEL SPECIFICATIONS

MODEL NUMBER	WATTS	INPUT VOLTAGE	CCT	LUMENS	BEAM ANGLE	CASE FINISHES
MR167W12V2700K15W	7W	12V AC/DC	2700K	500lm	15°	White
MR167W12V2700K35W			2700K	500lm	35°	White
MR167W12V3000K15W			3000K	500lm	15°	White
MR167W12V3000K35W			3000K	500lm	35°	White

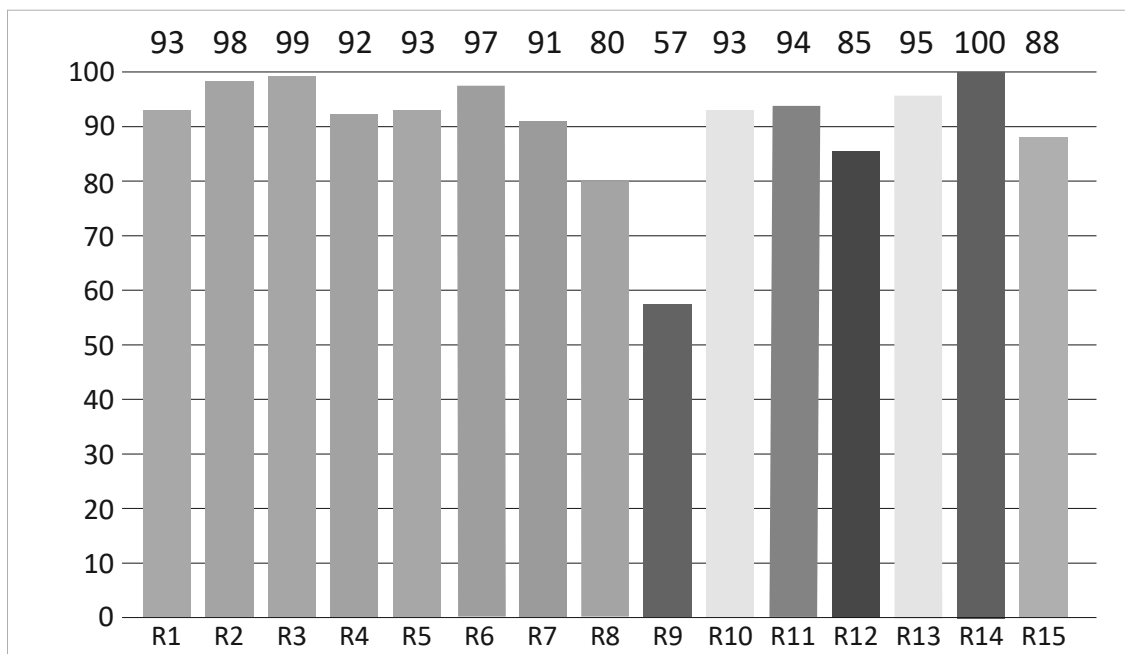
DIMMING CURVE



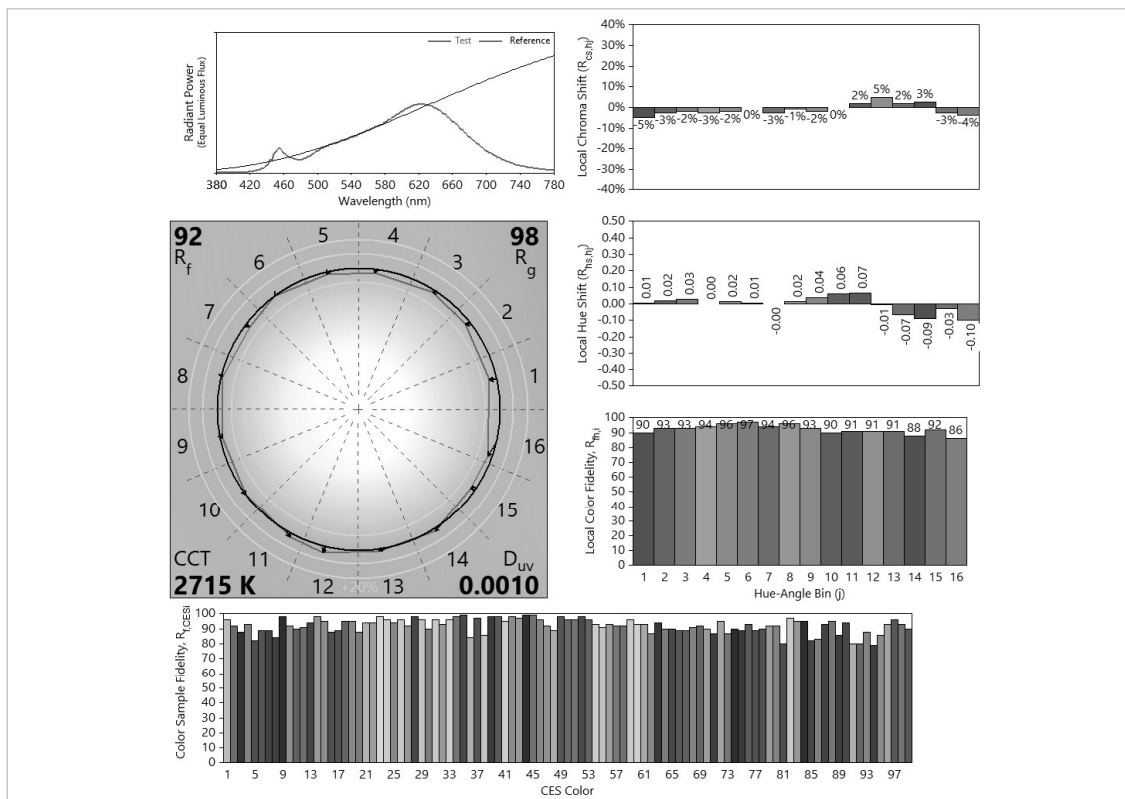
SPECTRORADIOMETRIC CHART



CRI TEST



TM30 TEST

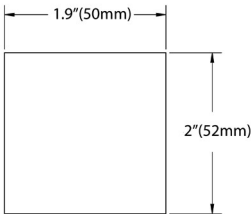
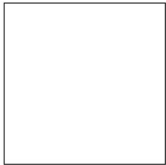
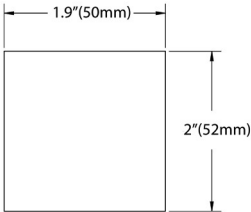


*Data shown based on MR167W12V2700K15W model

MECHANICAL SPECIFICATIONS

MODEL NUMBER	DIMENSIONS	SHIPPING WEIGHT
MR16	50.3 X 41.8mm	51g

PACKING



MR16 (Builder's Edition)

