



Input Voltage	120V AC
Wattage	7W
Nominal Lumens	650lm
CCT	3000K, 2700K
CRI/R9	90+, 54+
Color Fidelity (Rf), Gamut (Rg)	91, 99
Dimming	Phase Dimmable
Dimming Range	100% - <7%
Beam Angles	25°, 40°



RoHS



SunLight2® Builder's Edition LED bulbs are designed for applications where High CRI, great dimming performance, and reliability, are integrated in a cost-effective solution. SunLight2® builder's edition meets Energy Star & California Title 20 and 24 JA8 requirements.

FEATURES

- **High CRI** - High CRI 90+, R9 55+, TLCI 92 designed to provide superior color accuracy for residential, commercial and retail lighting applications
- **Low Flicker Index** - Providing an ideal and user health focused light source.
- **Energy Efficiency** - Energy efficient equivalent to 75W halogen bulb
- **Protection** - Suitable for use in both open and fully enclosed fixtures.
- **Fully Dimmable** - ELV, TRIAC, dimmable

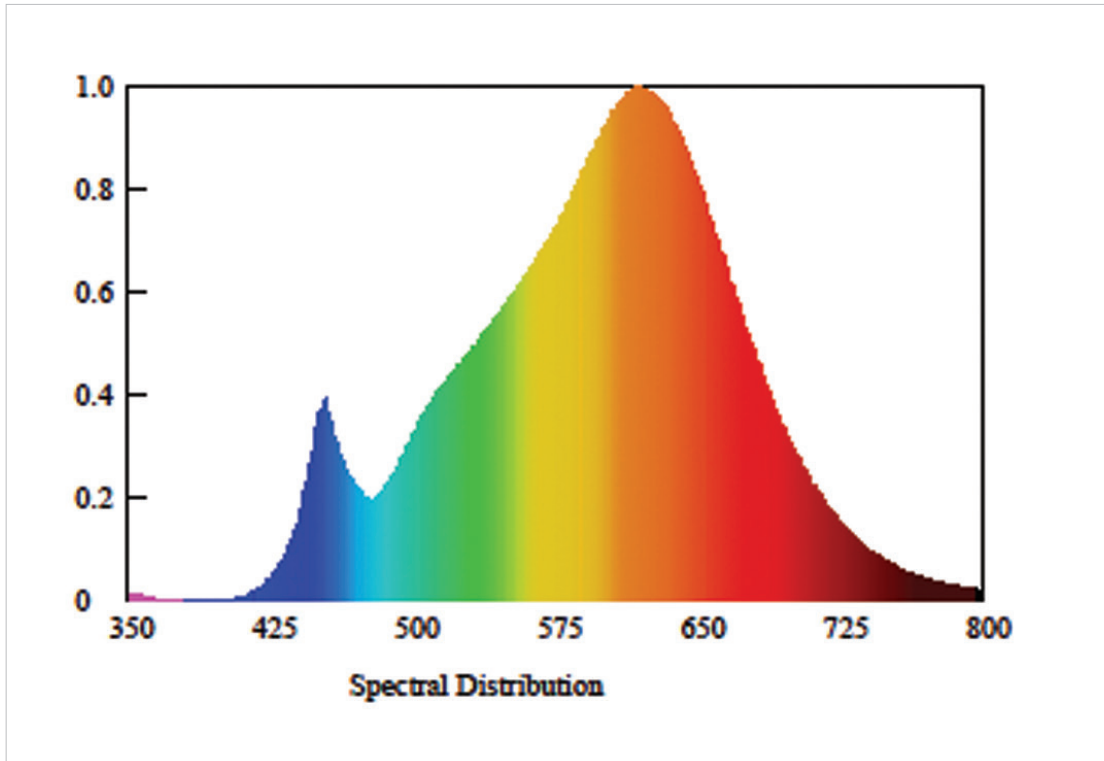
APPLICATIONS

- Hotels & Hospitality
- Galleries & Museums
- High-End Retail
- Architectural track lighting, pendants, downlights, and other indoor and outdoor applications
- Suitable for damp locations

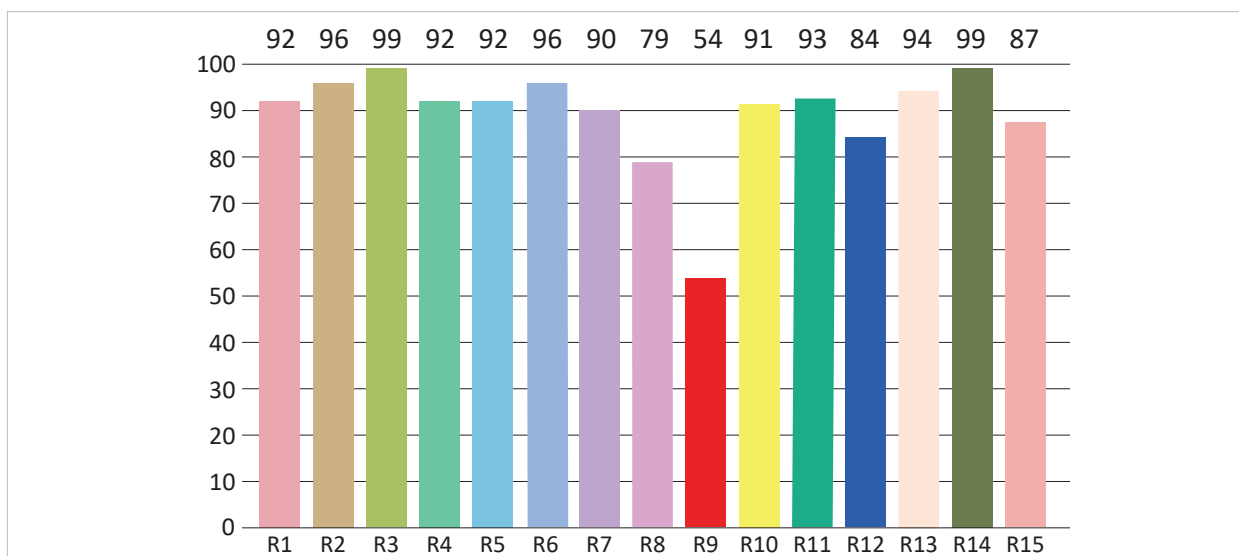
MODEL SPECIFICATIONS

MODEL NUMBER	WATTS	INPUT VOLTAGE	CCT	LUMENS	BEAM ANGLE	CASE FINISHES
PAR20A8W2700K25W	7W	120VAC	2700K	600lm	25°	White
PAR20A8W2700K40W			2700K	600lm	40°	White
PAR20A8W3000K25W			3000K	650lm	25°	White
PAR20A8W3000K40W			3000K	650lm	40°	White

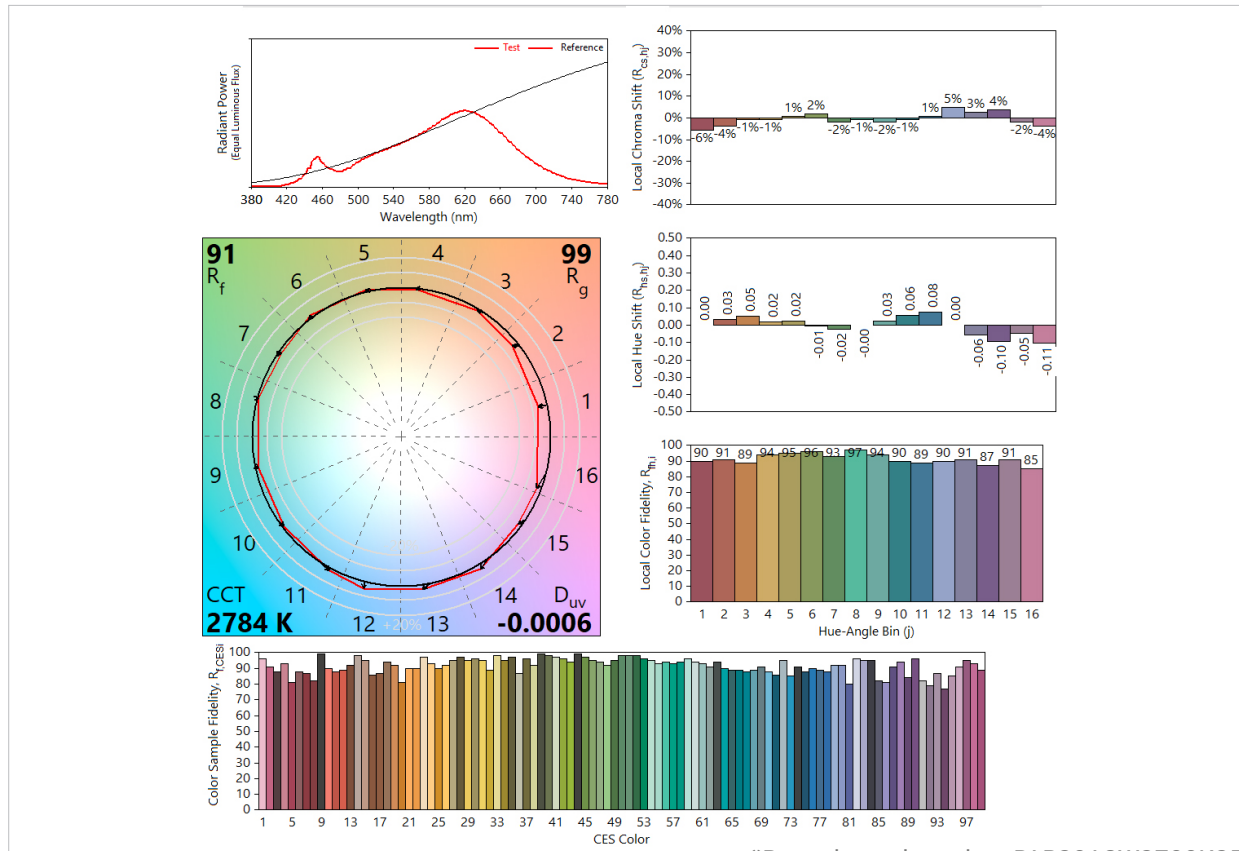
SPECTRORADIOMETRIC CHART



CRI TEST

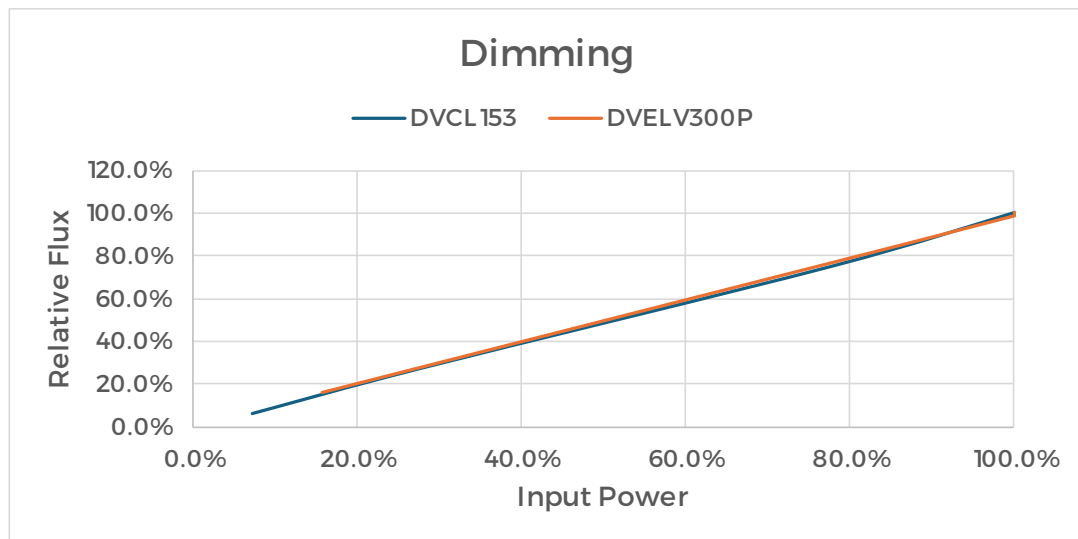


TM30 TEST



*Data shown based on PAR20A8W2700K25W model

DIMMING CURVE



MECHANICAL SPECIFICATIONS

MODEL NUMBER	DIMENSIONS	SHIPPING WEIGHT
PAR20	82 x 63 mm	97g

PACKING

PAR20 (Builder’s Edition)

