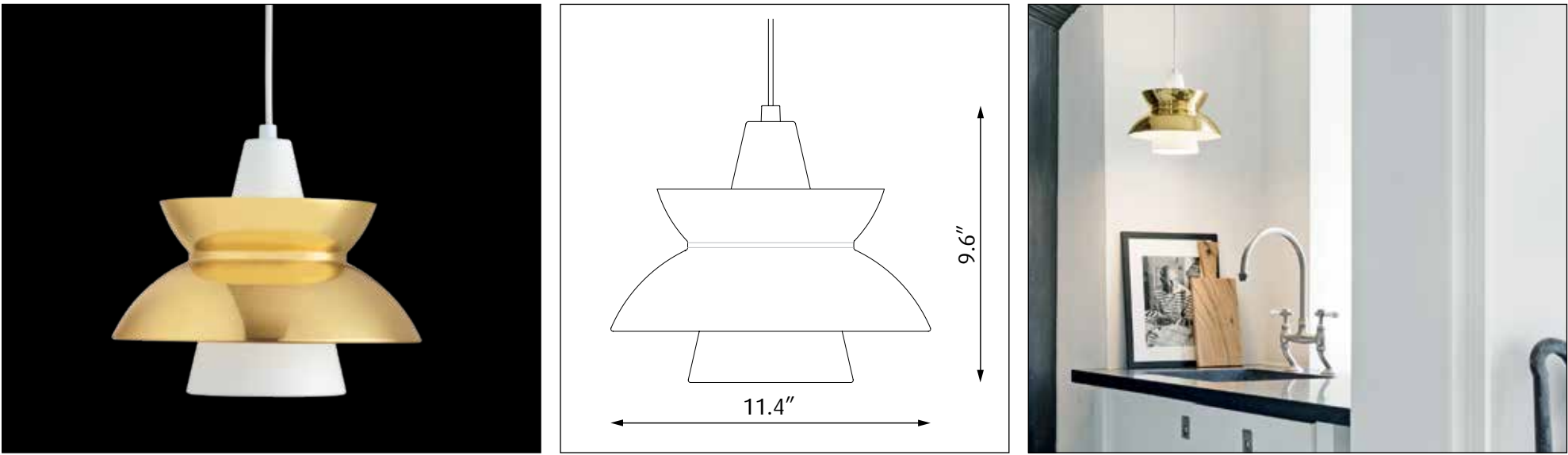



Design Louis Poulsen A/S




Light source	Voltage	Weight	Electric shock protection	Ingress protection
1/15W LED/A19/  medium	120V	Max 2,0 Lbs	Cl. II	IP 20

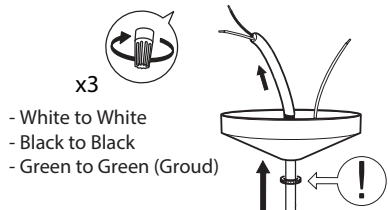
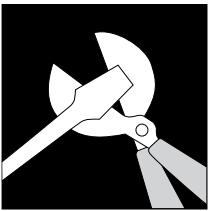
Recommended cleaning substances:
The metal surfaces are raw and untreated, and will become darker and less shiny on coming into contact with carbon dioxide and other airborne substances. Therefore, as soon as you open the packaging, you may notice areas of the polished surface which might have already developed a patina.
Wipe off dust with a dry, soft cloth. Remove greasy spots etc. with a soft cloth dampened in lukewarm water (<122° F/ 50° C) with a mild detergent.
Never use detergents containing abrasives and solvents.
Specifically for brass, copper and stainless steel surface:
To keep the shine and the light colour, treat the shade with polish once or twice a year.
Follow the product instructions.
Note: Polishes must not come into contact with the product's matt finished surfaces.


Warning: Scouring powder and similar substances will scratch surfaces.

All installation is subject to local code and jurisdiction.
Consult a qualified electrician to ensure correct branch circuit conductor.
The installer must ensure that the ceiling can support the luminaire's weight. The installer must if necessary reinforce the ceiling structure by adequate means.



Louis Poulsen A/S disclaims any liability if a half mirror light bulb is used. This type of light source reflects the heat and may damage/melt parts of the fixture.



 See further mounting instructions in the manual supplied with the canopy

The installer must ensure to use proper means (rawplugs / screws / expansion bolts) to secure the fixture to the ceiling material. (Means not provided)
The installer must if necessary reinforce the ceiling structure by adequate means.

