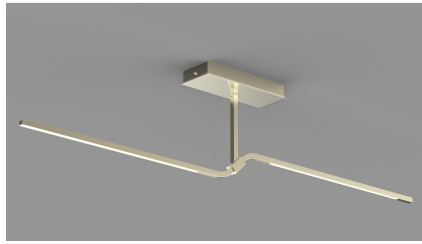




Rev: 12.01.20



## INSTALLATION INSTRUCTIONS

C-10746	Branch Pendant 60"
C-10747	Branch Pendant 72"
C-10748	Branch Pendant 84"

### IMPORTANT!

AT ALL TIMES WIRING TO BE DONE PER NATIONAL ELECTRICAL CODES (NEC) OR APPLICABLE LOCAL CODES. READ ALL INSTRUCTIONS THOROUGHLY. TURN OFF POWER AT CIRCUIT BREAKER OR FUSE BOX BEFORE PROCEEDING.

#### STEP 1

- Carefully remove fixture from packaging. Avoid using a sharp blade on the packaging, as doing so may result in damage to the fixture or finish. Place fixture on a padded surface such as a blanket.

#### STEP 2

- Turn off power at fuse box or circuit breaker.

#### STEP 3

- Using the included hex key, remove the socket head screws from canopy ends. (Figure 1)
- Separate the painted mounting bracket from canopy. Set canopy aside.

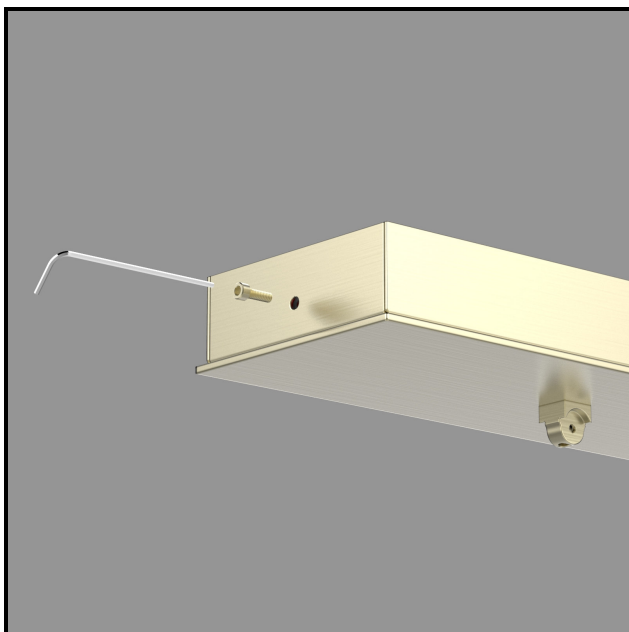


Figure 1

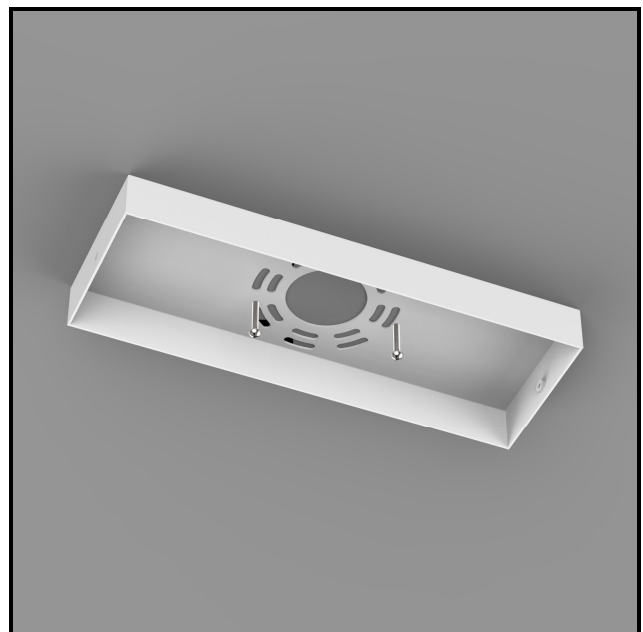


Figure 2

#### STEP 4

- Install mounting bracket onto ceiling electrical box with screws provided. (Figure 2)

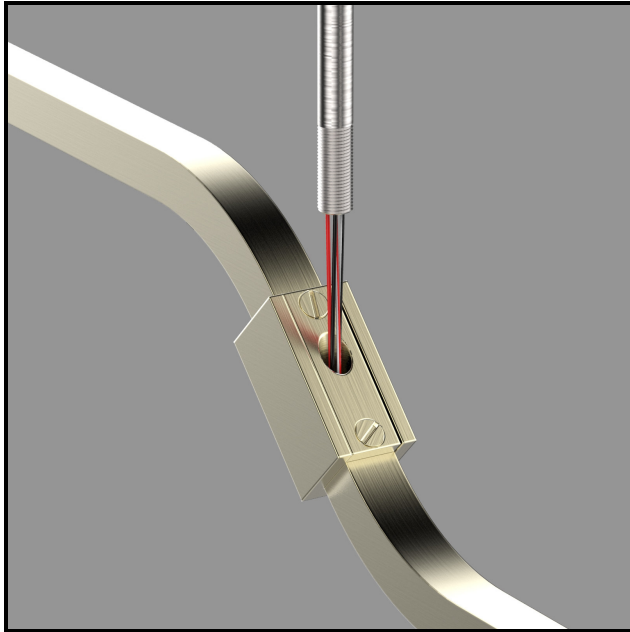


Figure 3

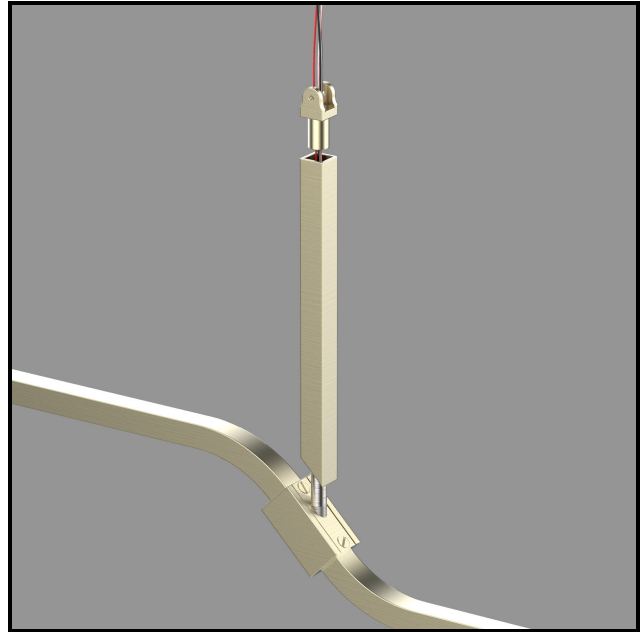


Figure 4

#### STEP 5

- Carefully feed the fixture wiring up through the steel tube. (Figure 3)
- Thread tube into the main body of the fixture, until it bottoms out.

#### STEP 6

- Slide square stem casing over steel tube. (Figure 4)
- Secure in place by threading saddle onto end of tube. Be sure saddle aligns with the side of the stem casing, and aligns with the fixture itself. (Figure 5)

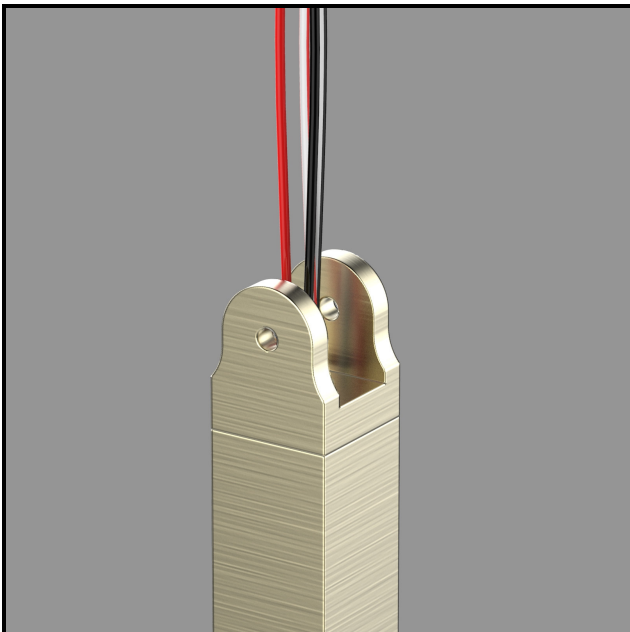


Figure 5

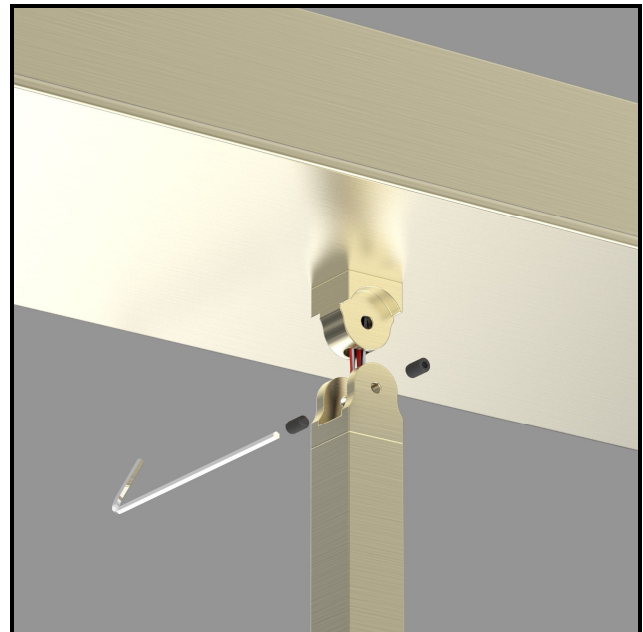


Figure 6

#### STEP 7

- Carefully align the stem saddle from Figure 5 with the canopy anchor block. (Figure 6)
- Secure in place with a set screw from each side. Use included hex key.

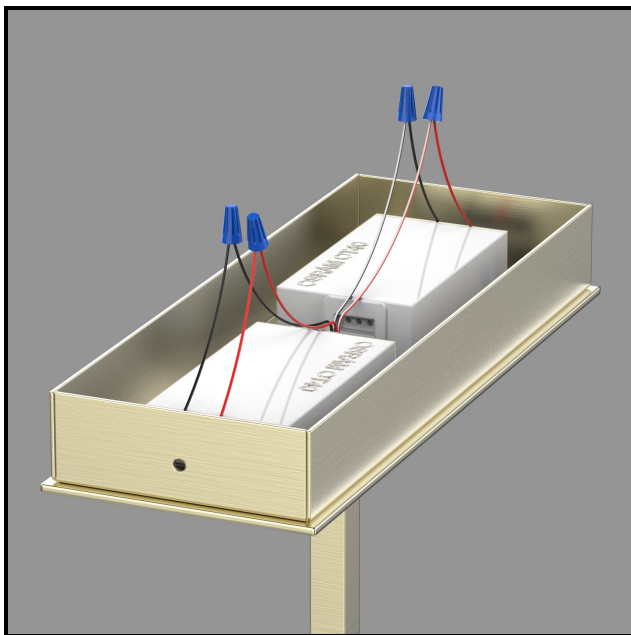


Figure 7

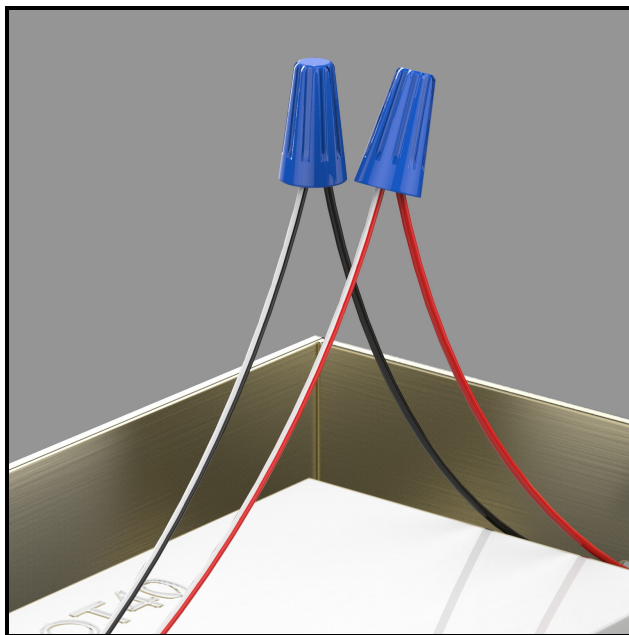


Figure 8

#### STEP 8

- Use a second person for assistance, or lay fixture on its side, on a padded surface.
- Make wire connections from the LED source to the two drivers in the canopy. (Figure 7)
- Connect the red and black fixture wires to the red and black wires on one of the drivers.
- Use blue or gray twist-on wire connectors.
- Connect the red/white striped wire and black/white striped wire to the red and black wires on the second driver.
- Detail view shows the striped wiring connecting to the second driver. (Figure 8)

#### STEP 9

- Lift fixture close to the ceiling. Carefully support the main body and canopy to prevent damage.

#### STEP 10

- Make main wire connections using included orange twist-on connectors. (Figure 9)
- Connect the white fixture lead to the neutral supply wire (typically white).
- Connect the black fixture lead to the hot supply wire (typically black).
- Connect the copper fixture wire to the ground wire or ground terminal in the outlet box.
- If installing on a 0-10V dimming system, connect the purple fixture wire to the purple supply wire.
- Connect the gray fixture wire to the gray supply wire.
- If dimming is not required, cap purple and gray wires separately and tuck into the canopy.

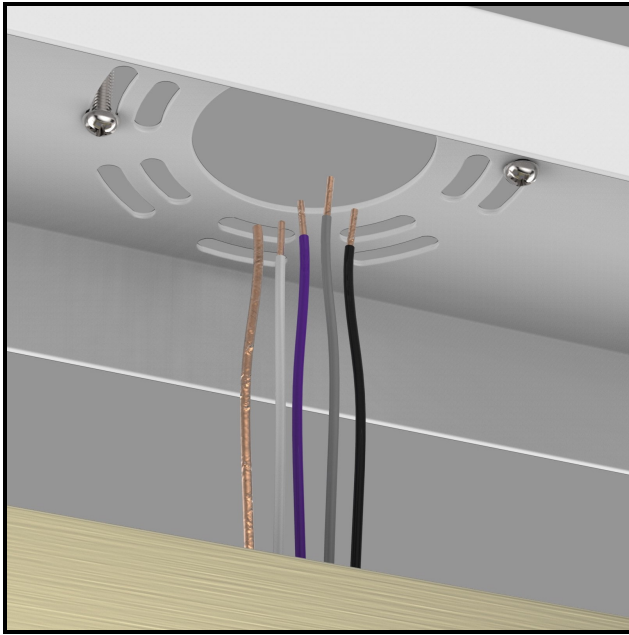


Figure 9



Figure 10

STEP 11

- Align canopy over mounting bracket and lift fixture flush to ceiling. (Figure 10)
- Secure canopy with the screws that were removed in STEP 3.

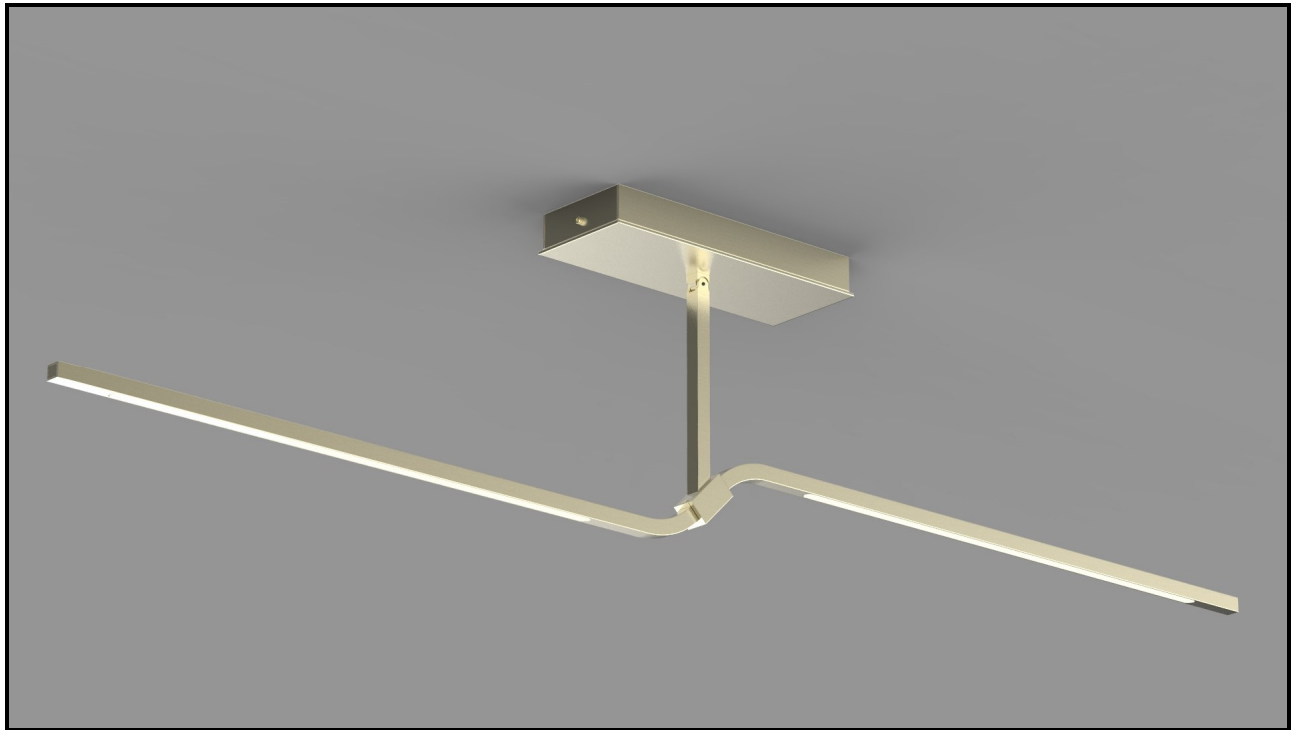


Figure 11

STEP 12

- Restore power to circuit. Turn on fixture.