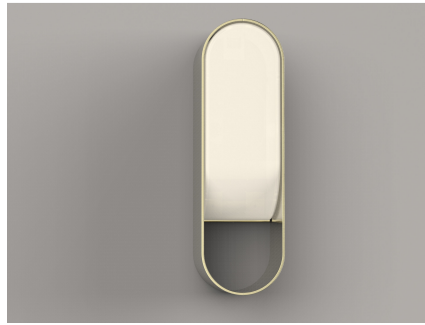




Rev: 10.01.19

## INSTALLATION INSTRUCTIONS

C-10725      Loop Sconce Single



### IMPORTANT!

AT ALL TIMES WIRING TO BE DONE PER NATIONAL ELECTRICAL CODES (NEC) OR APPLICABLE LOCAL CODES. READ ALL INSTRUCTIONS THOROUGHLY. TURN OFF POWER AT CIRCUIT BREAKER OR FUSE BOX BEFORE PROCEEDING.

**This fixture requires remote installation of the LED driver within the wall. If this requirement cannot be satisfied, STOP INSTALLATION NOW!**

### STEP 1

- Carefully remove fixture from packaging. Avoid using a sharp blade on the packaging, as doing so may result in damage to the fixture or finish. Glass shade is fragile so handle with care.

### STEP 2

- Turn off power at fuse box or circuit breaker.



Figure 1

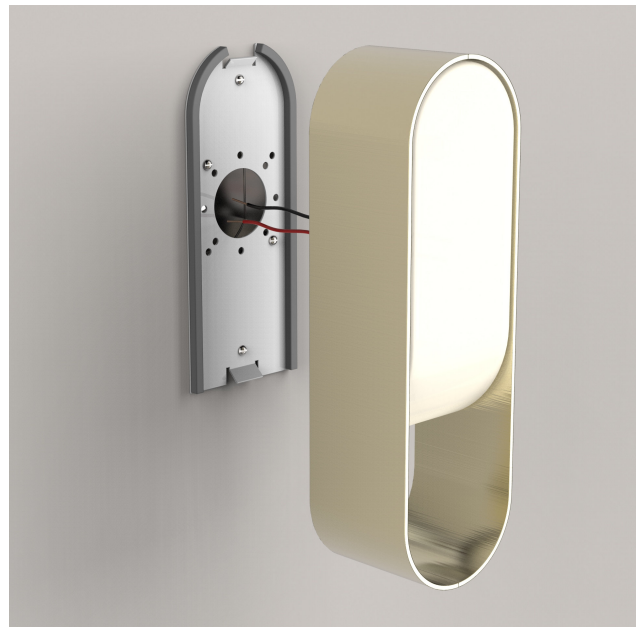


Figure 2

### STEP 3

- Install LED driver box within wall, remotely away from fixture. Driver will not fit inside fixture.
- Supply power to input side of remote driver (hot and neutral).
- Driver box must be properly grounded.
- If installing fixture on a 0-10V dimming system, run purple and gray low-voltage wires to dimmer.
- If dimming is not required, cap off the purple and gray leads separately.
- Run red and black LED driver leads to electrical box where scone will be installed.

### STEP 4

- Install mounting bracket to wall electrical box with the screws provided. (Figure 1)
- Use plastic wall anchors on top and bottom of the mounting bracket.
- Be sure curved end of plate is oriented at the top. Do not mount plate upside down.

### STEP 5

- While holding fixture, make LED wiring connections with included connectors.
- Connect RED (+) LED wire to red driver wire as discussed in STEP 3.
- Connect BLACK (-) LED wire to black driver wire as discussed in STEP 3.
- Push all connections inside the outlet box.
- **NEVER CONNECT WIRES DIRECTLY TO LINE VOLTAGE POWER.**

### STEP 6

- Hook backside of fixture over angled tab on mounting bracket. (Figure 2)
- Push fixture firmly against wall. Do not force.

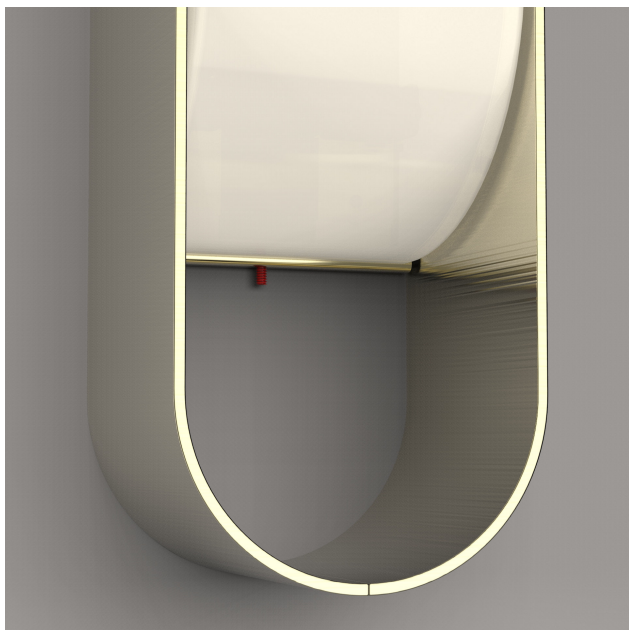


Figure 3

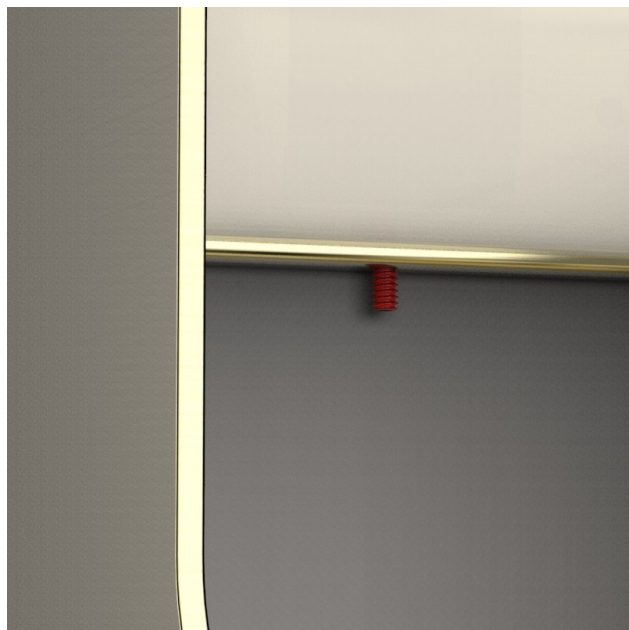
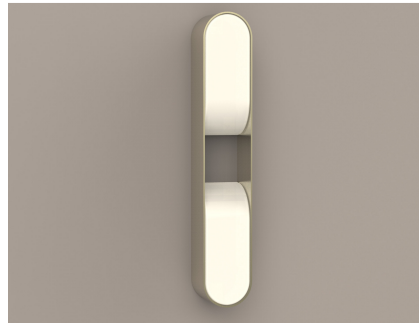


Figure 4

### STEP 7

- Using the provided Allen Wrench, tighten set screw near underside of glass shade. (Figure 3)
- Set screw shown in red for illustration. (Figure 4)



## INSTALLATION INSTRUCTIONS

C-10726      Loop Sconce Double

### IMPORTANT!

AT ALL TIMES WIRING TO BE DONE PER NATIONAL ELECTRICAL CODES (NEC) OR APPLICABLE LOCAL CODES. READ ALL INSTRUCTIONS THOROUGHLY. TURN OFF POWER AT CIRCUIT BREAKER OR FUSE BOX BEFORE PROCEEDING.

**This fixture requires remote installation of the LED driver within the wall, and final installation onto a hollow wall for proper wiring. If these requirements cannot be satisfied, STOP INSTALLATION NOW!**

#### STEP 1

- Carefully remove fixture from packaging. Avoid using a sharp blade on the packaging, as doing so may result in damage to the fixture or finish. Glass shades are fragile, so handle with care.

#### STEP 2

- Turn off power at fuse box or circuit breaker.

#### STEP 3

- Install driver enclosure within wall, remotely away from fixture. Driver will not fit inside fixture.
- Supply power to input side of remote driver (hot and neutral) and secure with conduit connector.
- Driver box must be properly grounded. Connect ground wire to stud within driver enclosure.
- If installing fixture on a 0-10V dimming system, run purple and gray low-voltage wires to dimmer.
- If dimming is not required, cap off the purple and gray leads separately.
- Run the enclosure's low-voltage cable to the electrical box where the sconce will be installed.

#### STEP 4

- Secure mounting brackets to wall electrical box with the screws provided (shown red). (Figure 1)
- For proper alignment, brackets are joined together by a temporary steel template. Do not remove this template yet.
- Use plastic wall anchors on top and bottom of each the mounting bracket. Installer should determine wall type, and use appropriate style of anchors if the ones provided are not suitable.

#### STEP 5

- After brackets are secured to wall, loosen nuts and lockwashers to remove template. (Figure 2)

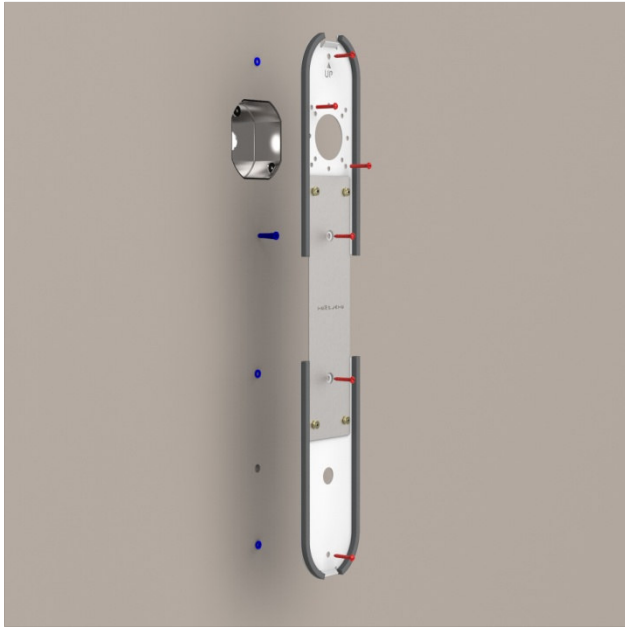


Figure 1



Figure 2

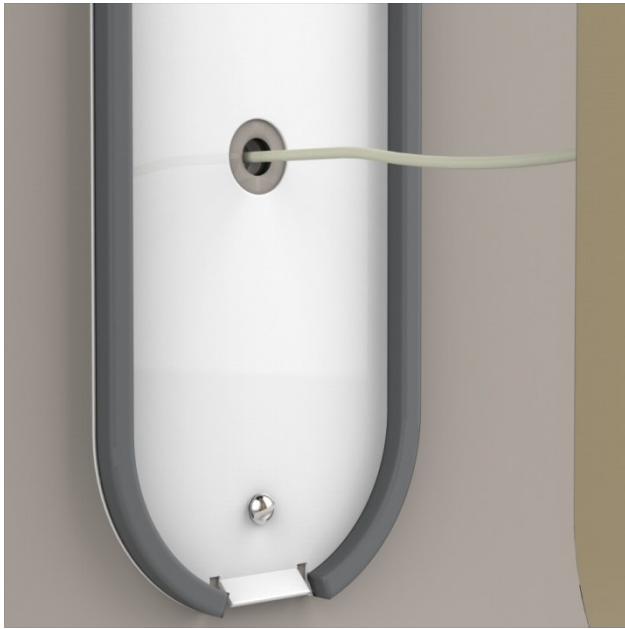


Figure 3



Figure 4

#### STEP 6

- Drill 3/8" hole in wall within center hole of bottom mounting bracket. (Figure 3)
- Using a wire puller, feed the low-voltage cable from the bottom end of the fixture, through the hole, and pull up to the electrical box at the top.
- The cable is pulled behind the wall surface. (Figure 4) This must be done on a hollow wall.

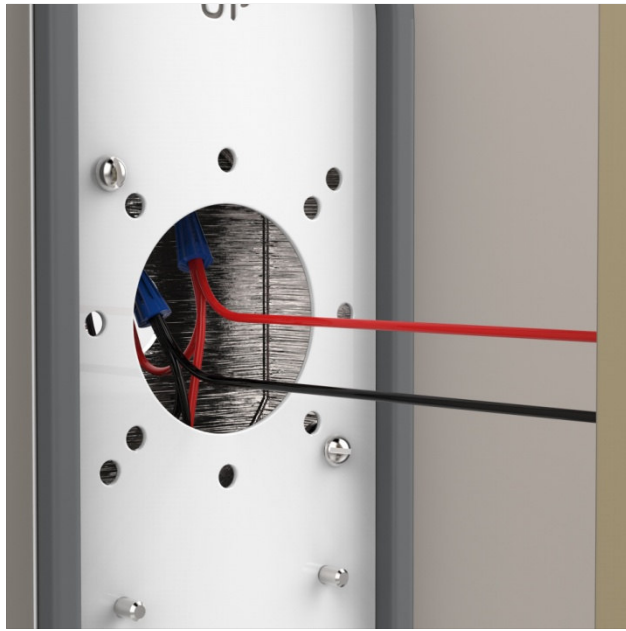


Figure 5

#### STEP 7

- While holding fixture, make LED wiring connections with included connectors.
- Connect both RED (+) LED wires to red driver wire as discussed in STEP 3.
- Connect both BLACK (-) LED wires to black driver wire as discussed in STEP 3.
- Push all connections inside the outlet box.
- **NEVER CONNECT THESE LED WIRES DIRECTLY TO LINE VOLTAGE POWER.**



Figure 6



Figure 7

STEP 8

- Hook angled tab from backside of fixture over angled tab on top mounting bracket. (Figures 6/7)

STEP 9

- Push fixture firmly against wall. Do not force. (Figure 8)

STEP 10

- Secure fixture by tightening set screw (shown red) at bottom of fixture. (Figure 9)
- Use the included Allen wrench to tighten the screw.

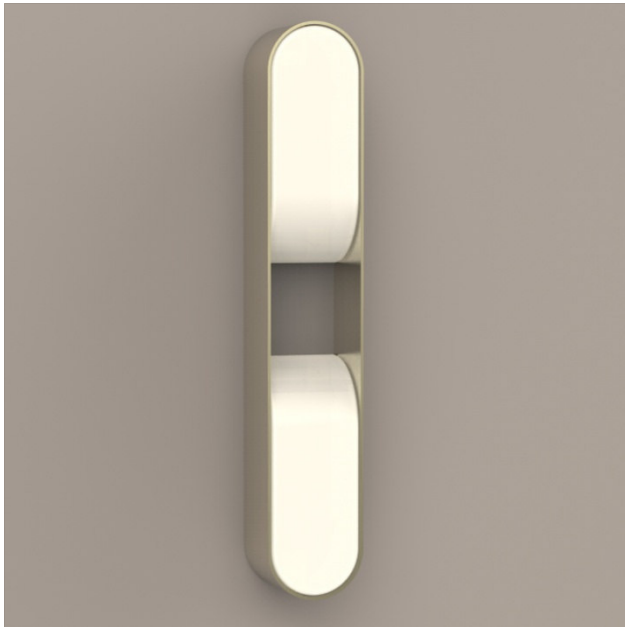


Figure 8

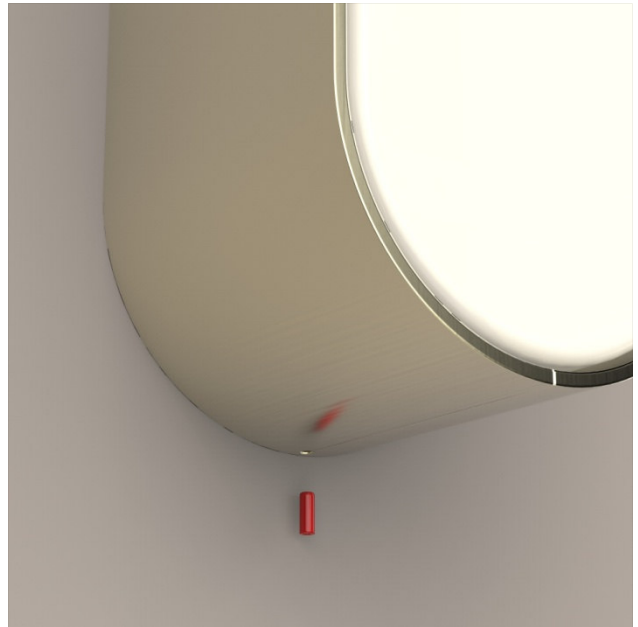


Figure 9