



INSTALLATION INSTRUCTIONS

C-10782 Nebula Pendant 3



IMPORTANT!

AT ALL TIMES WIRING TO BE DONE PER NATIONAL ELECTRICAL CODES (NEC) OR APPLICABLE LOCAL CODES. READ ALL INSTRUCTIONS THOROUGHLY. TURN OFF POWER AT CIRCUIT BREAKER OR FUSE BOX BEFORE PROCEEDING.

STEP 1

- Carefully remove fixture components from packaging. Avoid using a sharp blade on the packaging, as doing so may result in damage to the fixture or finish. Shade is alabaster. Handle with care.

STEP 2

- Separate mounting disk from canopy.
- Using a hex key, loosen set screw on side of canopy. Remove mounting disk (Figure 1).

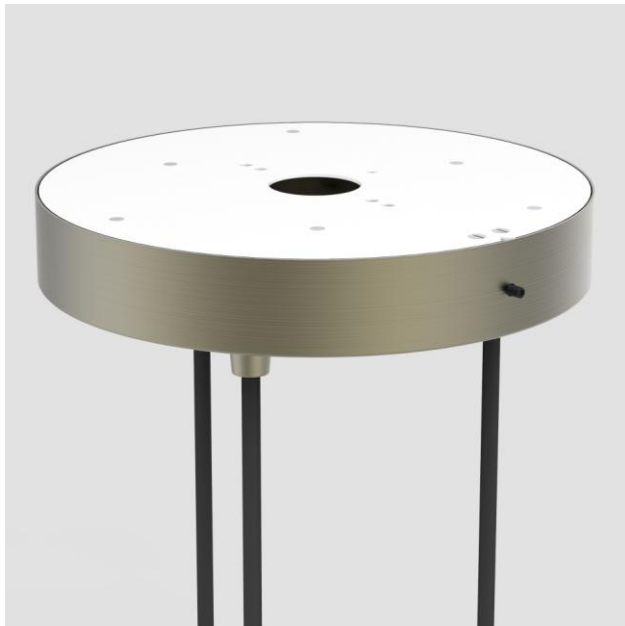


Figure 1



Figure 2

STEP 3

- Secure mounting disk to electrical box with the provided screws (Figure 2)

STEP 4

- Lift fixture up toward mounting disk (Figure 3).
- Canopy side hole must align with notched edge of mounting disk, shown with arrows.
- Feed the three stainless steel cables into the slotted brackets on the ceiling disk.
- Allow fixture to hang freely.



Figure 3

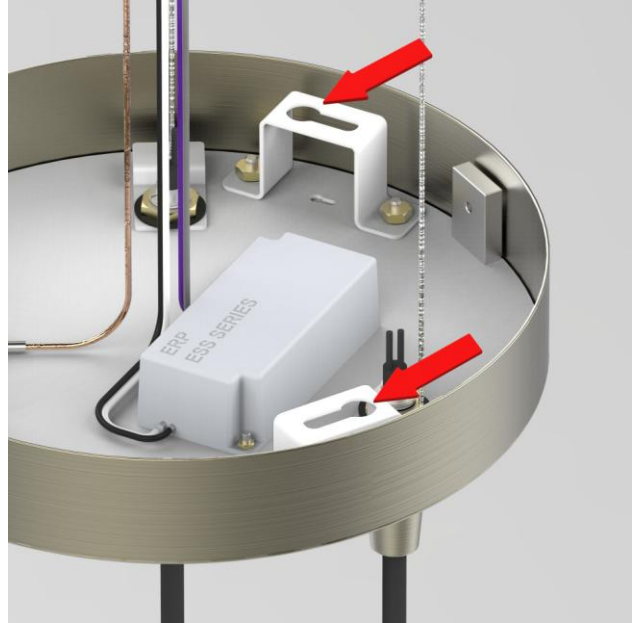


Figure 4

STEP 5

- Make wire connections using included orange twist-on connectors. (Figures 3/4)
- **If installing on ELV/reverse-phase or MLV/forward-phase dimming systems, or a basic switch:**
 - Connect the white driver lead to the neutral supply wire (typically white).
 - Connect the black driver lead to the hot supply wire (typically black).
 - Connect the copper fixture wire to the ground wire or ground terminal in the electrical box.
- **If installing on a 0-10V dimming system,,** follow the previous steps plus:
 - Connect the purple driver wire to the purple supply wire.
 - Connect the gray driver wire to the gray supply wire.
- **If 0-10V dimming is not required:**
 - Cap purple and gray wires as these wires are not needed.

STEP 6

- Note positioning of three brass balls on ceiling disk.
- Note positioning of three slotted support brackets inside canopy, shown with arrows (Figure 4).
- Raise fixture toward ceiling disk. Align balls with slotted brackets, rotate canopy to lock into place.
- Be sure that support cables are carefully tucked fully into canopy and are not pinched.

STEP 7

- Lock properly rotated canopy by threading in the side set screw (Figure 5).



Figure 5



Figure 6

STEP 9

- If alabaster shade needs to be removed or installed, slide brass cone up cord (Figure 6).
- Using a hex key, remove or install set screws. Alabaster cone is fragile so it should be properly supported during this step.



Figure 7

STEP 10

- Restore power to fixture.



INSTALLATION INSTRUCTIONS

C-10783 Nebula Pendant 9



IMPORTANT!

AT ALL TIMES WIRING TO BE DONE PER NATIONAL ELECTRICAL CODES (NEC) OR APPLICABLE LOCAL CODES. READ ALL INSTRUCTIONS THOROUGHLY. TURN OFF POWER AT CIRCUIT BREAKER OR FUSE BOX BEFORE PROCEEDING.

STEP 1

- Carefully remove fixture components from packaging. Avoid using a sharp blade on the packaging, as doing so may result in damage to the fixture or finish. Shades are alabaster. Handle with care.

STEP 2

- Separate mounting disk from canopy.
- Using a hex key, loosen set screw on side of canopy. Remove mounting disk (Figure 1).



Figure 1



Figure 2

STEP 3

- Secure mounting disk to electrical box with the provided screws (Figure 2)
- Due to weight of fixture, use provided toggle anchors or equivalent anchors for the ceiling type.

STEP 4

- Lift fixture up toward mounting disk (Figure 3).
- Canopy side hole must align with notched edge of mounting disk, shown with arrows (Figures 3/4)
- Feed the three stainless steel cables into the slotted brackets on the ceiling disk.
- Allow fixture to hang freely.



Figure 3



Figure 4

STEP 5

- Make wire connections using included orange twist-on connectors. (Figures 3/5)
- **If installing on ELV/reverse-phase or MLV/forward-phase dimming systems, or a basic switch:**
 - Connect the white driver lead to the neutral supply wire (typically white).
 - Connect the black driver lead to the hot supply wire (typically black).
 - Connect the copper fixture wire to the ground wire or ground terminal in the electrical box.
- **If installing on a 0-10V dimming system,** follow the previous steps plus:
 - Connect the purple driver wire to the purple supply wire.
 - Connect the gray driver wire to the gray supply wire.
- **If 0-10V dimming is not required:**
 - Cap purple and gray wires as these wires are not needed.

STEP 6

- Note positioning of three brass balls on ceiling disk (Figure 5)
- Note positioning of three slotted support brackets inside canopy, shown with arrows (Figure 6).
- Raise fixture toward ceiling disk. Align balls with slotted brackets, rotate canopy to lock into place.
- Be sure that support cables are carefully tucked fully into canopy and are not pinched.

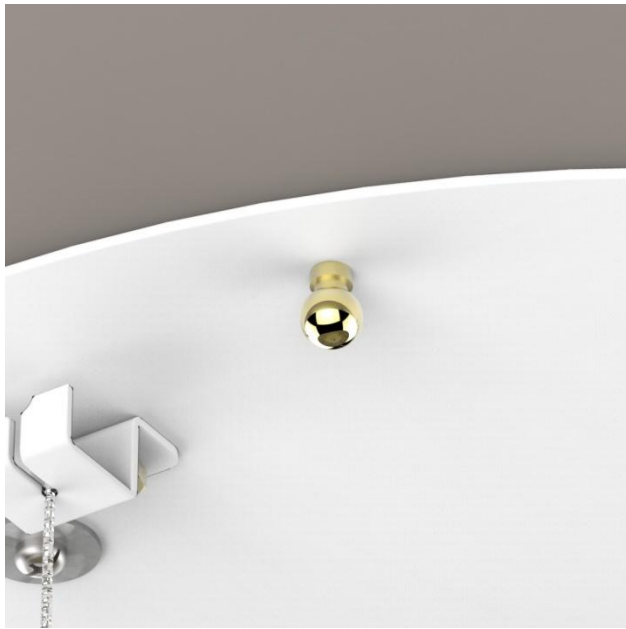


Figure 5

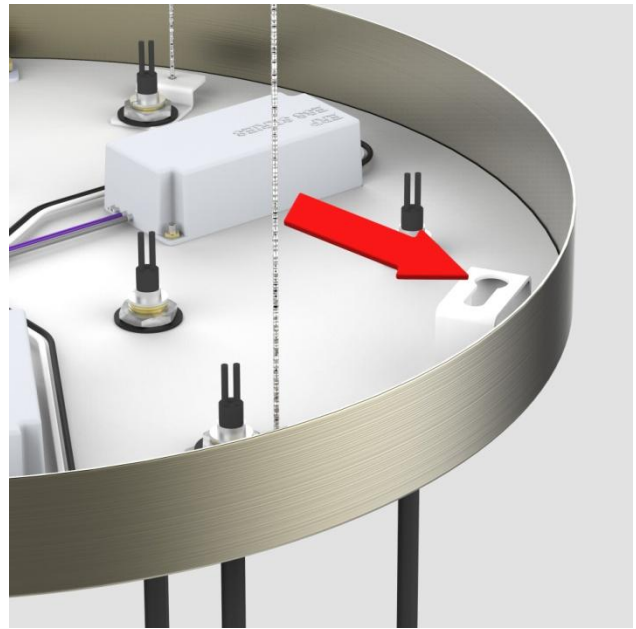


Figure 6

STEP 7

- Lock properly rotated canopy by threading in the side set screw (Figure 7).



Figure 7



Figure 8

STEP 8

- If alabaster shade needs to be removed or installed, slide brass cone up cord (Figure 8).
- Using a hex key, remove or install set screws. Alabaster cone is fragile so it should be properly supported during this step.



Figure 9

STEP 9

- Restore power to fixture.