

Instructions for Installation:

C10656 PORTAL SCENCE I

Lamping Specifications:

LED, 20w TOTAL, 3000K/90+CRI

C10657 PORTAL SCENCE II

Lamping Specifications:

LED, 30w TOTAL, 3000K/90+CRI

Input Voltage:

120 - 277v 50/60hz

0-10V Dimming

IMPORTANT | CAUTION
READ ALL INSTRUCTIONS THOROUGHLY.
TURN OFF POWER AT CIRCUIT BREAKER OR
FUSE BOX BEFORE PROCEEDING.

THIS PRODUCT MUST BE INSTALLED
IN ACCORDANCE WITH THE APPLICABLE
INSTALLATION CODE BY A PERSON
FAMILIAR WITH THE CONSTRUCTION
AND OPERATION OF THE PRODUCT
AND THE HAZARDS INVOLVED

BEFORE YOU BEGIN

1. To ensure the success of the installation, be sure to read these instructions and review the diagrams thoroughly before beginning.
2. All electrical connections must be in accordance with local code ordinances.
3. Before starting the installation, disconnect electricity at the circuit breaker or the fuse box. Disconnecting power by using the wall switch is not sufficient to prevent electrical shock.

RECESSED WALL INSTALLATION

This fixture is intended to be recessed into a wall. Before attempting installation of any recessed lighting fixture, check your local electrical building code. This code sets the wiring standards and installation requirements for your locality and should be understood before starting work. Use caution when planning the location for installation of this fixture. Make sure there are no studs, joists, electrical wire, water pipes, etc. behind/inside of the wall where the fixture is to be installed.

Please note the following depth requirements when recessing fixtures into the wall.

- C-10656 Portal I measures approx 3.75" in depth.
- C-10657 Portal II measures approx 4.00" in depth.

CUTTING HOLE IN WALL

Each fixture is supplied with a template to allow the installer to cut the appropriate hole diameter into the wall.

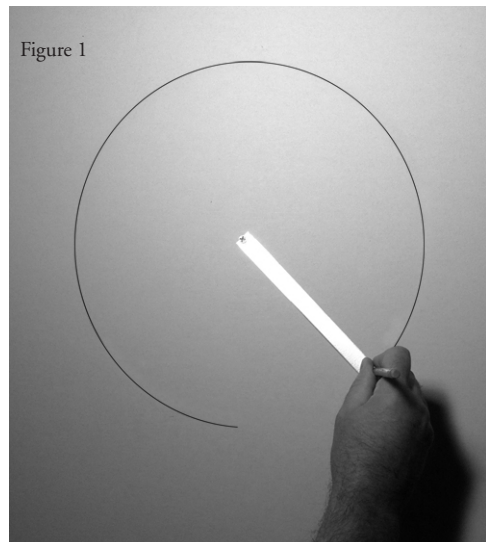
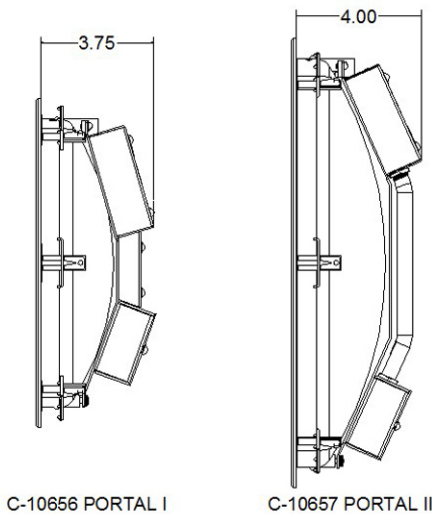
C-10656 Portal I Scence requires a 9-9/16" (9.56) dia. Max dia of 9-3/4" (9.75). Use Boyd Template Q-7882

C-10657 Portal II Scence requires a 13-9/16" (13.56) dia. Max dia of 13-3/4" (13.75). Use Boyd Template Q-7881

Step 1

Locate the center point of the circle and drive a screw through the larger hole in the template tool. Use a pencil and insert in the remaining hole in the template and draw the circle on the wall where the fixture will be installed.

(See Figure 1)



BOYD

Step 2

Temporarily install the fixture into the hole cut out in the wall. Orient the fixture with the driver (large enclosure) in an upwards position. (See Figure 2)



Figure 2

Step 3

Once the fixture is properly aligned in the wall, mark all of the hole locations where the fixture will be secured with bracket hardware and screws. (See Figure 3)



Figure 3

Step 4

Carefully drill pilot holes through the sheet rock at all of the marked locations using a 9/64" drill bit. Use care so as to not drill too close to diameter and damage sheet rock.

Step 5

Install brackets at all of the mounting locations. The bracket is adjustable; loosen screw and slide bracket open to accommodate the wall thickness.

Step 6

Compress and clamp the bracket onto the wall. Tighten the screw once the bracket is securely clamped to the wall. (See Figure 4)

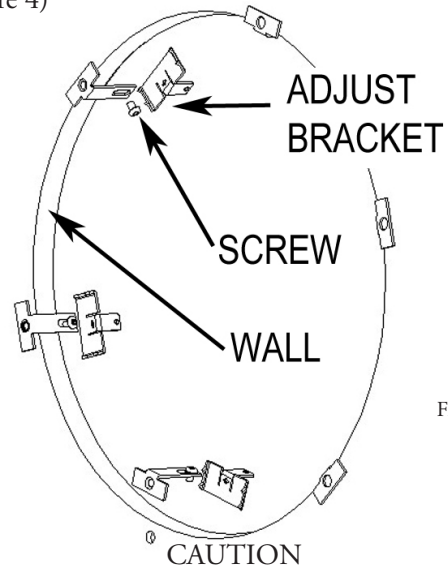


Figure 4

The driver in this fixture is inherently protected and as designed should not exceed 85 deg C. It is recommended to provide at least 1-1/2" (38 mm) of clearance between insulation and fixture housing.

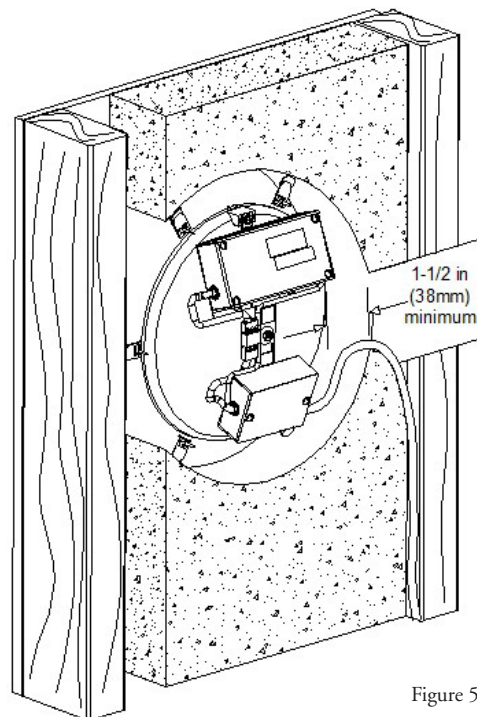


Figure 5

NOTE: The wall surface is exempt from this requirement and may be in contact with the bowl part of the fixture housing. (See Figure 5)

BOYD

IMPORTANT! AT ALL TIMES WIRING TO BE DONE PER NATIONAL ELECTRIC CODES (NEC) OR APPLICABLE LOCAL CODES

Step 1

Run armored cable (BX) or non-metallic (NM) cable (also known as Romex) from your circuit breaker or fuse panel to the installation location in the wall providing 6" to 8" of slack extending below the hole. Cable having up to 12 AWG wiring may be used. Use supply wires that are rated 90 degrees C or greater.

Step 2

The enclosure on the fixture will accommodate industry standard connectors designed for use with 1/2" knockouts. Route the incoming power wires into the enclosure on the fixture and properly secure into position.

**MAKE WIRE CONNECTIONS
(Non Dimming Application)**

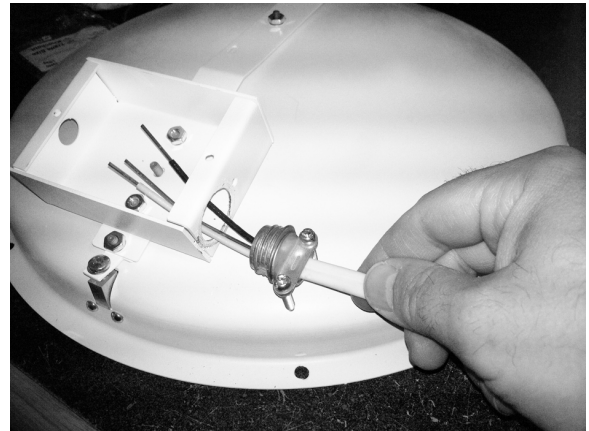
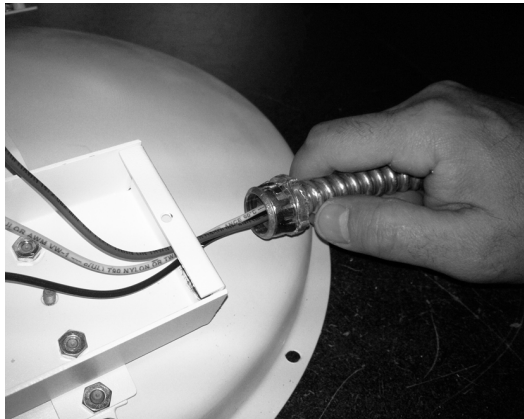
Step 1

Make wire connections, connect the WHITE supply wire (typically NEUTRAL) to the WHITE fixture wire. Connect the BLACK supply wire (typically HOT) to the BLACK fixture wire. Connect the GREEN/COPPER (typically GROUND) supply wire to the GREEN/COPPER fixture wire.

Step 2

Push wire connections inside enclosure and install wire cover, secure into position with hardware.

LED DIMMING APPLICATIONS



NOTE: This fixture can be dimmed when used in conjunction with a compatible 0-10v dimmer control. Compatible 0-10v dimmer controls are available from leading companies such as Lutron, Leviton and Lightolier. This dimmer control type is sometimes referred to as 4 wire dimming and requires additional wires be routed into the junction box in the wall.

LED DIMMING CONNECTIONS

Step 1

Connect the (PURPLE) fixture wire to the positive (+) dimmer control wire. Connect the (GRAY) fixture wire to the negative (-) dimmer control wire.

Step 2

Push wire connections inside the enclosure and install the wire cover and secure into position with screw hardware.

Below is a list of more popular 0-10v compatible LED dimmer controls.

- Lightolier – Sunrise electronic 0-10v dimmer
- Lutron – Diva 0-10v dimmer
- Leviton – IllumaTech Electronic 0-10v dimmer
- Lutron – Nova T Electronic 0-10v dimmer
- Lutron – Maestro digital 0-10v dimmer

MOUNT FIXTURE INTO WALL

BOYD

Step 1

Install fixture into the opening in the wall and orient with the driver (large enclosure) in an upwards position. (See Figure 8)

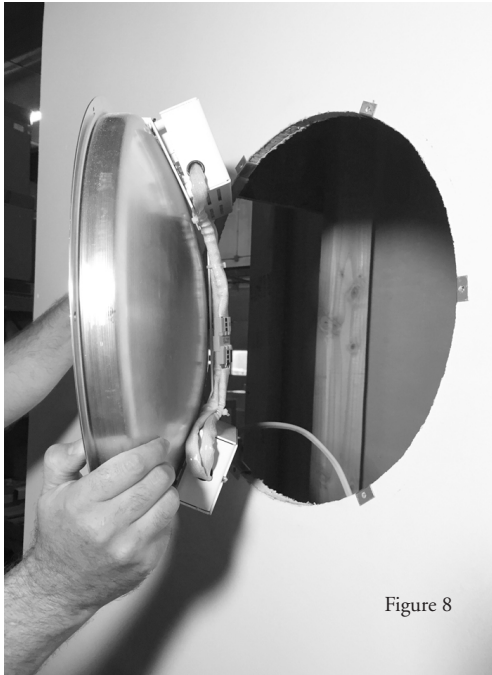


Figure 8

Step 2

Align the holes in the fixture bowl with the bracket hardware located on the wall. Secure fixture into position with screws. (See Figure 9)



Figure 9

Step 3

Install trim ring by aligning the pins on the trim ring with the holes in the mounting blocks on the fixture. These should be aligned in a vertical position. Carefully push the ring until it rests against the wall. (See Figure 10)



Figure 10

Step 4

Secure the ring into position by tightening allen head set screws recessed into the mounting blocks on the fixture at two locations, top and bottom. (See Figure 11)

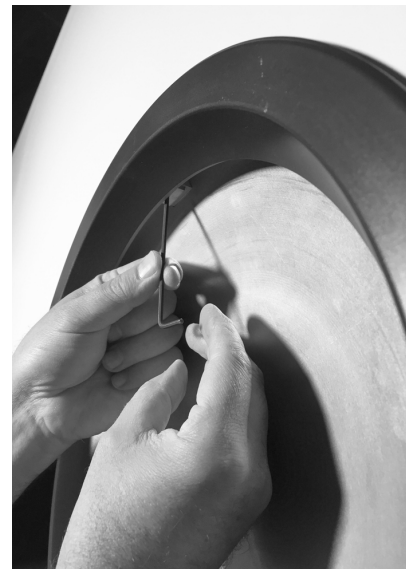


Figure 11