

## INSTALLATION INSTRUCTIONS

C-10698	Santa Fe Sconce
C-10699	Pueblo Sconce
C-10700	Taos Sconce

### IMPORTANT!

AT ALL TIMES WIRING TO BE DONE PER NATIONAL ELECTRICAL CODES (NEC) OR APPLICABLE LOCAL CODES. READ ALL INSTRUCTIONS THOROUGHLY. TURN OFF POWER AT CIRCUIT BREAKER OR FUSE BOX BEFORE PROCEEDING.

**This fixture requires remote installation of the LED driver within the wall. If this requirement cannot be satisfied, STOP INSTALLATION NOW!**

#### STEP 1

- Carefully remove fixture from packaging. Avoid using a sharp blade on the packaging, as doing so may result in damage to the fixture or finish.

#### STEP 2

- Turn off power at fuse box or circuit breaker.

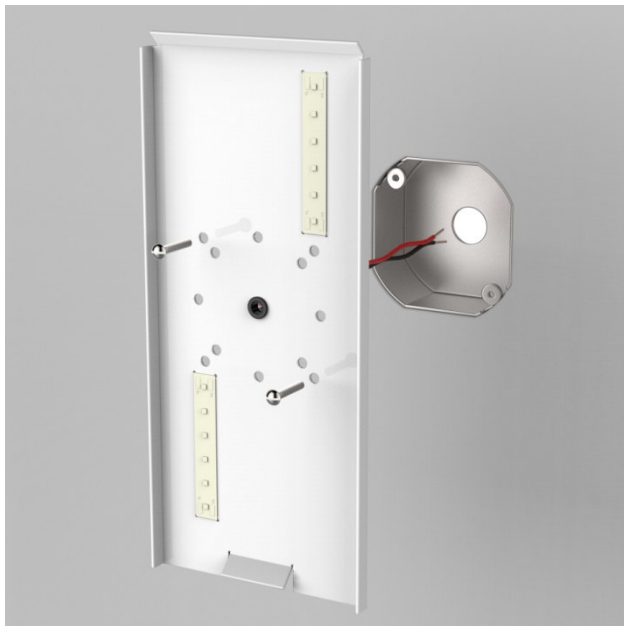


Figure 1



Figure 2

### STEP 3

- Install LED driver box within wall, remotely away from fixture. Driver will not fit inside fixture.
- Supply power to input side of remote driver (hot and neutral).
- Driver box must be properly grounded.
- Run red and black LED driver leads to electrical box where sconce will be installed.

### STEP 4

- Remove mounting plate from backside of fixture by loosening bottom set screw, (Figure 3)
- Hold mounting plate over outlet box. (Figure 1)

### STEP 5

- While holding mounting plate, make LED wiring connections with included connectors. (Figure 1)
- Connect RED (+) LED wire to red driver wire as discussed in STEP 3.
- Connect BLACK (-) LED wire to black driver wire as discussed in STEP 3.
- Push all connections inside the outlet box.
- **NEVER CONNECT WIRES DIRECTLY TO LINE VOLTAGE POWER.**

### STEP 6

- Secure mounting plate to outlet box with screws provided. (Figure 1)

### STEP 7

- Position sconce directly over mounting plate on the wall. (Figure 2)
- Fixture should "hook" over the top flange on mounting plate.

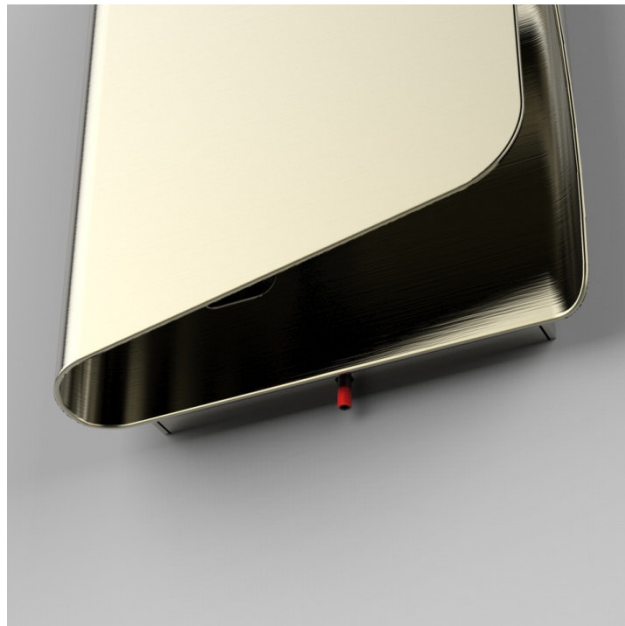


Figure 3

### STEP 7

- Using the provided Allen Wrench, tighten set screw on bottom of sconce. (Figure 3)
- Set screw shown in red for illustration.
- Restore power to circuit.