



Rev: 2.10.22

INSTALLATION INSTRUCTIONS

C-10754 Spire Leaf Pendant



IMPORTANT!

AT ALL TIMES WIRING TO BE DONE PER NATIONAL ELECTRICAL CODES (NEC) OR APPLICABLE LOCAL CODES. READ ALL INSTRUCTIONS THOROUGHLY. TURN OFF POWER AT CIRCUIT BREAKER OR FUSE BOX BEFORE PROCEEDING.

STEP 1

- Carefully remove fixture components from packaging. Avoid using a sharp blade on the packaging, as doing so may result in damage to the fixture or finish. Shades are porcelain. Handle with care.

STEP 2

- Secure mounting disk to electrical box using the provided screws, shown red (Figure 1).

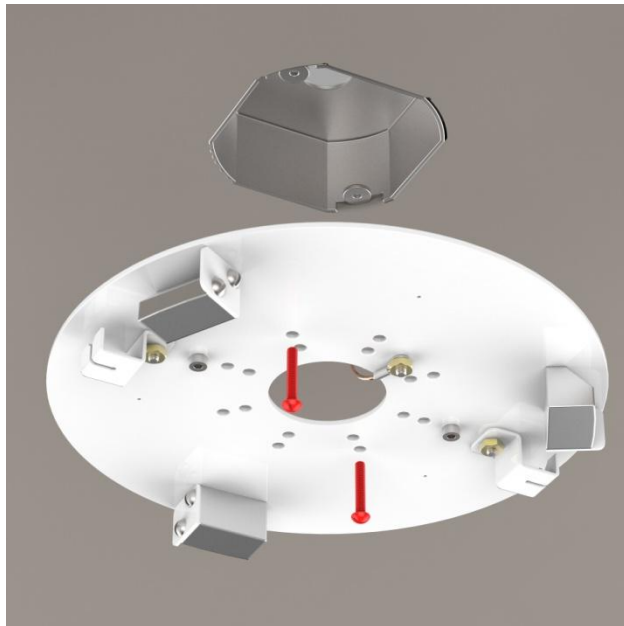


Figure 1

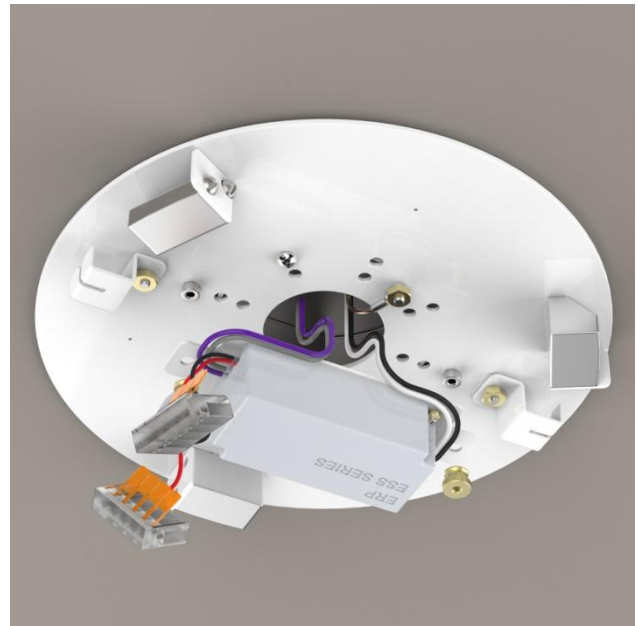


Figure 2

STEP 3

- Make wire connections using included orange twist-on connectors. (Figure 2)
- **If installing on ELV/reverse-phase or MLV/forward-phase dimmer systems, or a basic switch:**
 - Connect the white driver lead to the neutral supply wire (typically white).
 - Connect the black driver lead to the hot supply wire (typically black).
 - Connect the copper fixture wire to the ground wire or ground terminal in the outlet box.

- If installing on a 0-10V dimming system,, follow the previous steps plus:
 - Connect the purple driver wire to the purple supply wire.
 - Connect the gray driver wire to the gray supply wire.
- If 0-10V dimming is not required, cap purple and gray wires as these wires are not needed.
- Leave black and red driver wires dangling for hookup on a later step.

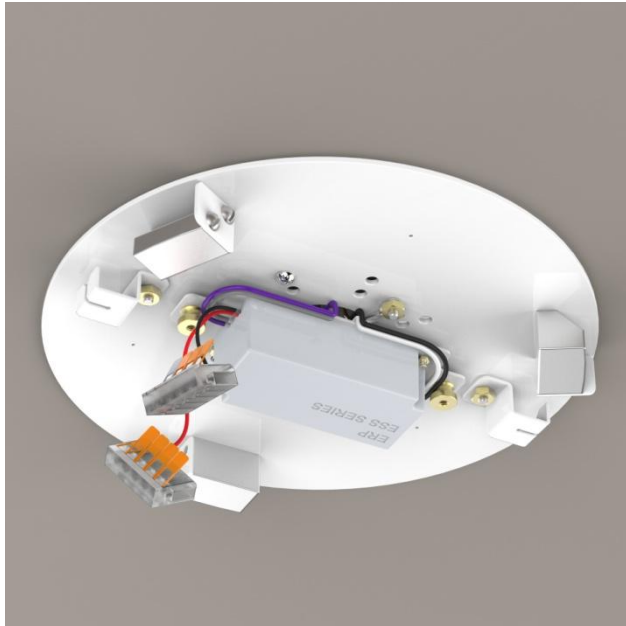


Figure 3



Figure 4

STEP 4

- Secure driver plate to mounting disk with brass thumb knobs (Figure 3)
- Carefully tuck wires under plate. Do not allow wiring to become pinched.

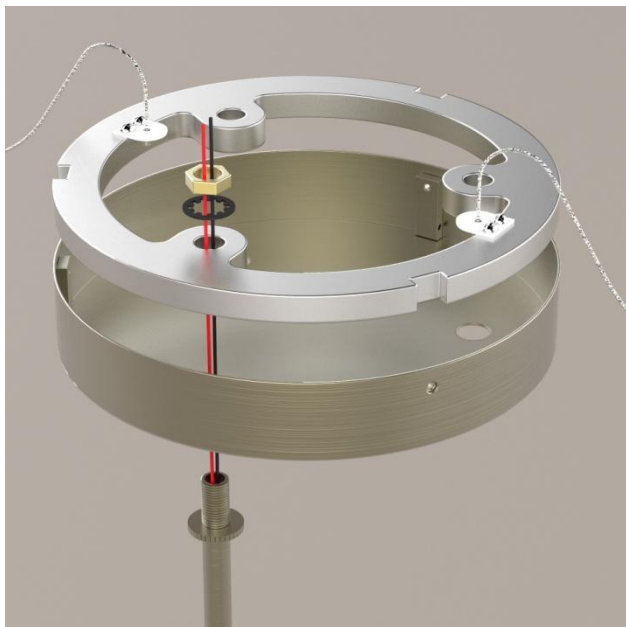


Figure 5

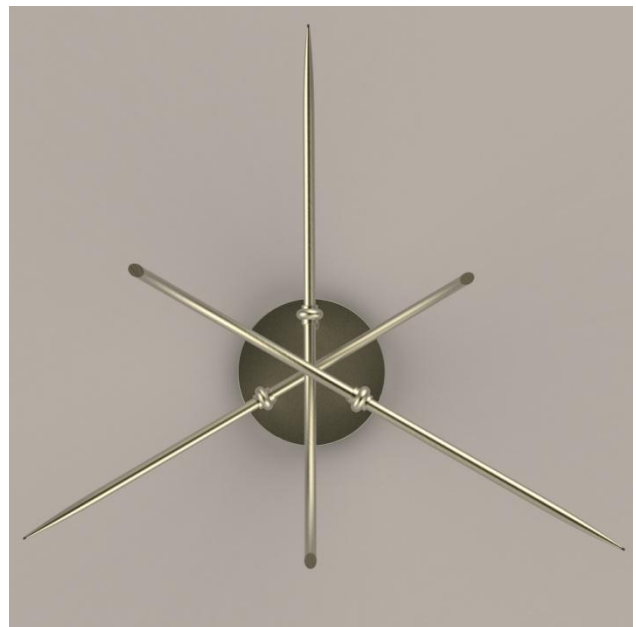


Figure 6

STEP 5

- Prepare to attach the three stem assemblies to canopy.
- Start with shortest length stem assembly (Figure 4).
- Feed top end of stem through canopy and aluminum anchor ring (Figure 5).
- Secure by hand-tightening nut and lockwasher to stem.
- Orient the tapered body outward.
- Repeat process with next two stems, first with the medium length stem assembly, then the longest.
- Final recommended layout is as shown in Figure 6 but orientation may be set as desired.
- Using a wrench, give a final tightening of all nuts (Figure 7).

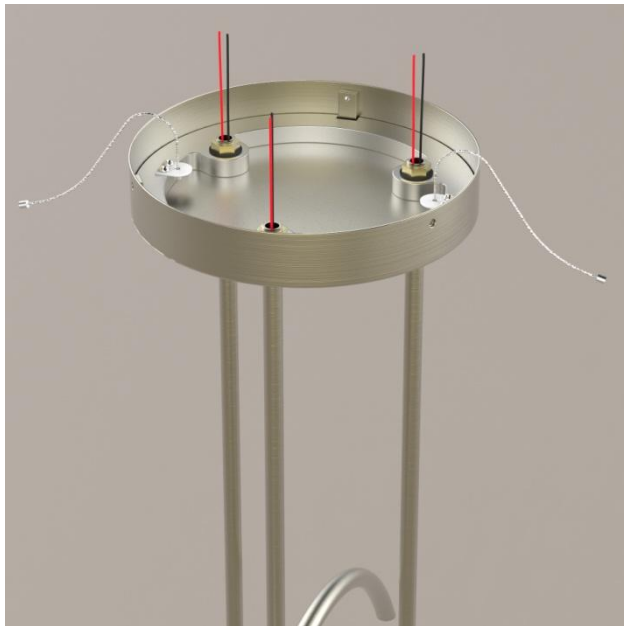


Figure 7



Figure 8

STEP 6

- Lift assembled fixture up toward mounting disk (Figure 8).
- Feed the two stainless steel cables (shown Figure 7) into the slotted brackets on the ceiling disk.
- Allow fixture to hang freely.

STEP 7

- Using provided lever-style connectors, connect fixture wiring to the driver (Figure 8)
- Pair the three red (+) fixture leads to the red (+) driver wire.
- Pair the three black (-) fixture leads to the black (-) driver wire.



Figure 9



Figure 10

STEP 8

- Align set screw on canopy side with wedge blocks on mounting disk, shown red (Figure 9).
- Lift fixture straight up (Detail #1 on Figure 10).
- Be sure stainless steel cables are tucked into the canopy.
- Tighten the three set screws using a hex key.
- Turn canopy clockwise until screws hit the rotational stops on end of wedge (Detail 2 on Figure 10).
- Give final tightening to the three set screws (Figure 11)



Figure 11



Figure 12

STEP 9

- Carefully place porcelain shades on rods. End of shade should be "hooked" over the tip of the rod.
- Secure shade to rod with screw and white rubber O-ring (Figure 12). Screw requires a hex key.
- Do not over-tighten as this may crack the porcelain shade.

STEP 10

- If screw hole on shade does not properly align with the tapped hole in the tapered rod, remove shade and adjust set screw on tip of rod (Figure 13).
- Secure porcelain shade onto rod

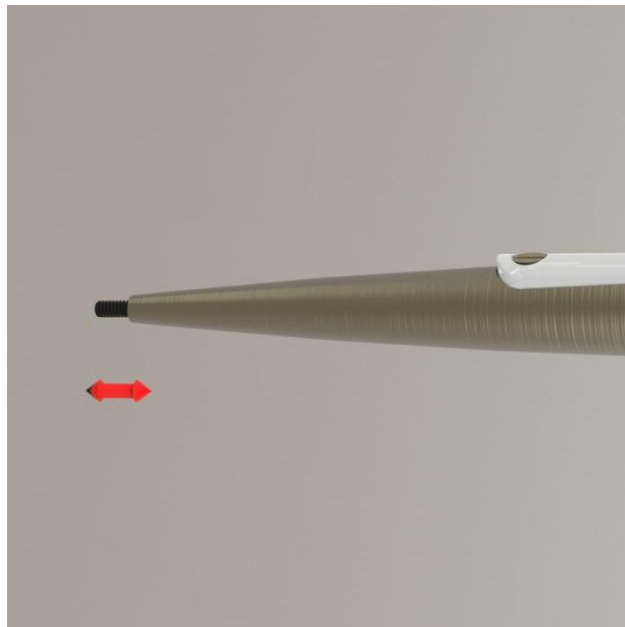


Figure 13

STEP 11

- Restore power to fixture.



Rev: 5.27.23



INSTALLATION INSTRUCTIONS

C-10755 Spire Leaf Pendant 9

IMPORTANT!

AT ALL TIMES WIRING TO BE DONE PER NATIONAL ELECTRICAL CODES (NEC) OR APPLICABLE LOCAL CODES. READ ALL INSTRUCTIONS THOROUGHLY. TURN OFF POWER AT CIRCUIT BREAKER OR FUSE BOX BEFORE PROCEEDING.

STEP 1

- Carefully remove fixture components from packaging. Avoid using a sharp blade on the packaging, as doing so may result in damage to the fixture or finish. Handle with care.
- Leave porcelain shades in their wrapping at this point and safely set aside until STEP 10 of instruction.



Figure 1

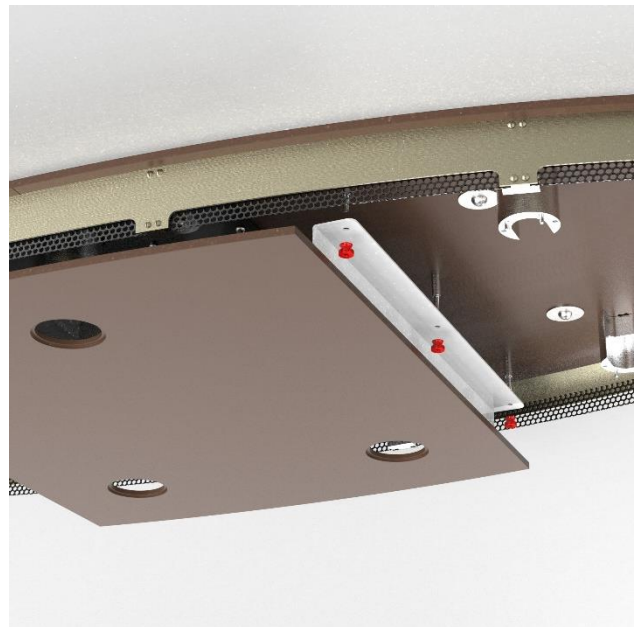


Figure 2

STEP 2

- Separate end plates from the canopy structure by removing the hidden screw located in the end-most hole of each end plate. (Fig 2)
- Remove center plate by removing the six brass thumb knobs, shown red (Fig 2)



Figure 3



Figure 4

STEP 3

- Critical: The next step will require at least a second person for safe installation.
- Raise canopy structure to ceiling. Mark the (10) holes for the secondary ceiling anchors.
- Toggle anchors have been provided but the installer should use anchors suitable for the ceiling type.
- Secure canopy structure directly to outlet box with the provided 1" screws. (Fig 3)
- Install appropriate ceiling anchors at the (10) mounting points, one shown red.

STEP 4

- Make wire connections using included orange connectors.
- The standard drivers in this fixture are dimmable with multiple different styles of dimmers.
- **If installing on ELV/reverse-phase or MLV/forward-phase dimming systems, or a basic switch:**
 - Connect the white driver leads to the neutral supply wire (typically white).
 - Connect the black driver leads to the hot supply wire (typically black).
 - Connect the copper fixture wire to the ground wire or ground terminal in the electrical box.
 - The fixture may now be dimmed using a compatible ELV/MLV/Triac dimmer.
- **If installing on a 0-10V dimming system, follow the previous steps plus:**
 - Connect the purple driver wire to the purple supply wire.
 - Connect the pink (or gray) driver wire to the pink (or gray) supply wire.
- **If 0-10V dimming is not required:**
 - Cap purple and pink (or gray) wires as these wires are not needed.

STEP 5

- Reinstall center plate by aligning side brackets over standoffs. Secure with brass thumb knobs. (Fig 4)
- Angle end plate over center plate, so that the bracket, shown red, rests on top of center plate. (Fig 5)
- Slide plates together and lock into position by inserting screw into hidden hole. (Fig 6)



Figure 5



Figure 6

STEP 6

- Repeat process for the second end plate on the opposite side.

STEP 7

- Each of the holes in the plate has an electrical wiring harness above it.
- Reach in and pull electrical wiring close to the hole.



Figure 7



Figure 8

STEP 8

- Thread "numerically marked" stems onto LED and tail assembly. (Fig 7)
- Slide cover disk onto stem as shown. Cap off end of stem with aluminum anchor disk.
- Thread hex nut onto backside of stem.

STEP 9

- Beginning with the shortest stem assembly, place near corresponding marked canopy position.
- Make wire connections between stem and the wiring harness within the hole.
 - Red (+) wire to red wire, and black (-) wire to black wire.
- Secure anchor disk to canopy structure as shown. (Fig 8)
- Slide cover disk up stem (Fig 9). Secure in place with small screw, using an Allen wrench. (Figs 9/10)
- Repeat process on remaining stems, starting with the shortest stems down to the longest.

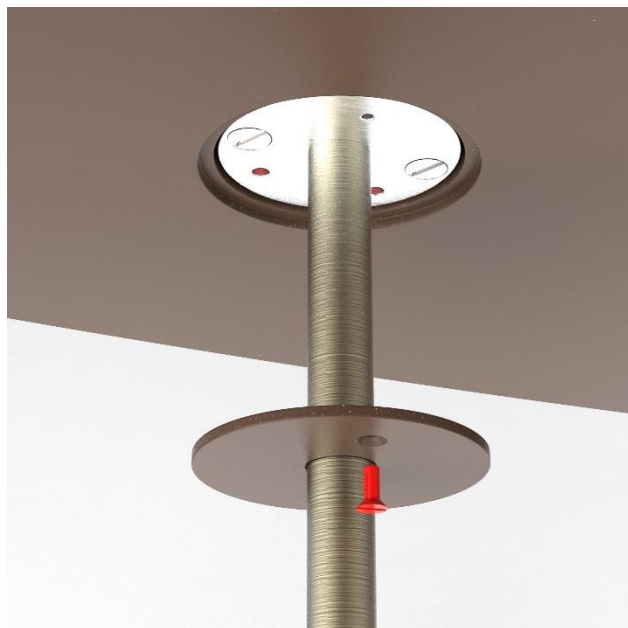


Figure 9



Figure 10

STEP 10

- Carefully place porcelain shades on rods. Upper shade should be "hooked" over the tip of the rod.
- Secure shade to rod with screw and white rubber O-ring (Fig 11). Screw requires a hex key.
- Do not over-tighten as this may crack the porcelain shade.



Figure 11

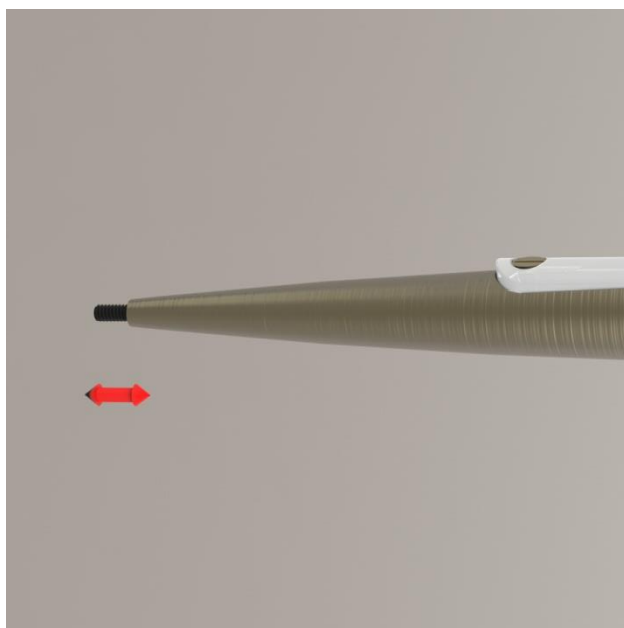


Figure 12

STEP 11

- If screw hole on shade does not properly align with the tapped hole in the tapered rod, remove shade and adjust set screw on tip of rod (Figure 12).
- Secure porcelain shade onto rod
- Repeat process for all shades.

STEP 12

- Restore power to fixture.