



[product.]

ELECTRICITY / 1G TOGGLE SWITCH

[motion. **ON/OFF.**]

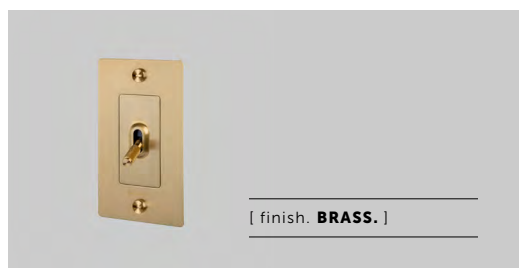
[look. **CROSS.**]

[detail. **COIN SCREW.**]

[born. **LONDON.**]

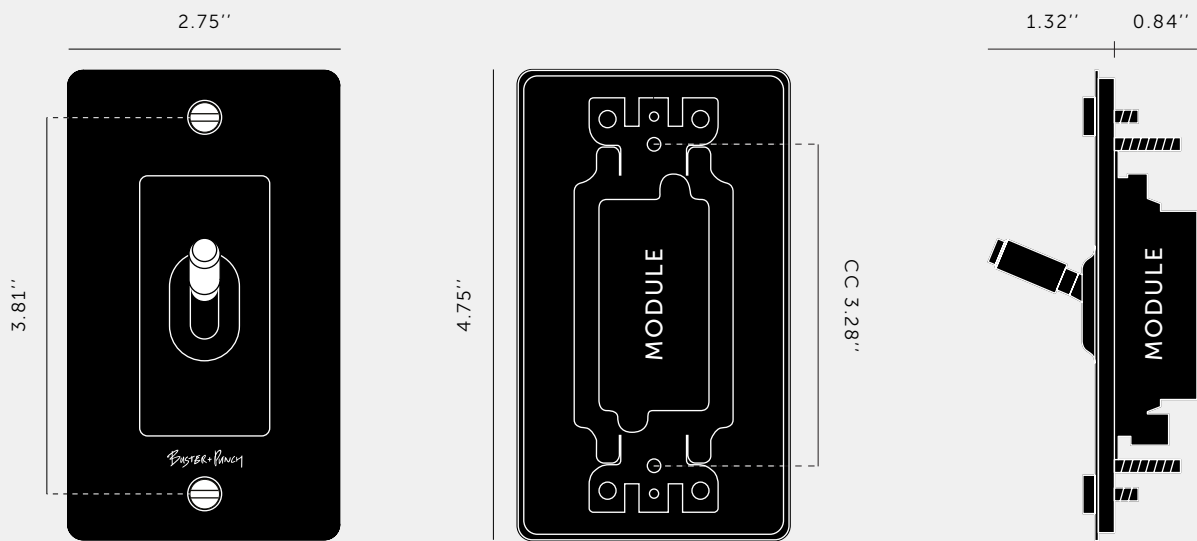
[region. **NORTH AMERICA.**]

A solid metal toggle switch with a diamond-cut knurled knob to feel amazing with every touch. The switch is finished with a flat plate and our signature solid metal coin screws. Available in five different finishes. You can also team them up with our dimmers, duplex and USB outlets in matching finishes.



[gang. **1G.**]

[info. **MEASUREMENTS.**]



[info. **SPECIFICATIONS.**]

Our Metal Electricity range has solid stainless steel plates, in our signature white, steel, brass, smoked bronze and black finishes.

Module: NTM-01384 (US-TO-MO-A)
Style: On/ Off Toggle switch
120-277V AC /15 A / 60 HZ
3 way switching (can be controlled from 2 locations)
Certification: cETLus 5005703

[info. **FINISH & SKU NUMBERS.**]

[finish.]	[US.]
White	NTG-143085
Steel	NTG-07084
Brass	NTG-05081
Smoked Bronze	NTG-09083
Black	NTG-023083

[info. **CARE INSTRUCTIONS.**]

Wipe with damp cloth with no loose hairs, avoid using any chemicals. All finishes are prone to aging.

[info. **CERTIFICATION.**]

Plates: Underwriters Laboratories cULus listed for use throughout North America.

Toggle: Intertek cETLus listed number for use throughout North America.

[please. **NOTE.**]

DISCLAIMER: Always consult a trade professional when installing this toggle switch. Buster + Punch is not responsible for the usage or feasibility of installation requirements. This product is not suitable for damp or wet environments.

FAQ SHEET

CATEGORY	QUESTION	ANSWER
GENERAL	How do I clean my electricity collection?	A slightly damp microfiber cloth is best, never use any chemicals as this will damage the metal surface.
TOGGLE	Are your toggles 3 way or 4 way multi-way switching?	Our standard toggles are 3-way switches which are suitable multi-way switching for 2 Locations. Our 4-way switch will be coming soon.
TOGGLE	Are the toggles available as dimmers?	No, unfortunately they are not.
TOGGLE	Can we remove and replace the toggle on the plate?	Yes.
TOGGLE	Do you manufacture / stock spring loaded toggles?	No, unfortunately we don't.
TOGGLE	Can I mix a toggle switches with a dimmer?	This is not possible for the complete products, but custom sets are available where you can mix toggles, dimmers and sockets. Please contact sales@busterandpunch.us to make an order.
TOGGLE	Can I have a 3 way and a 4 way on the same 2G plate for Multi way switching?	No, until our 4-way switch is available this is not available, but the system is modular so you can mix and match what toggles, dimmers and sockets you want on each wall plate.
TOGGLE	The spring action has gone in my toggle?	Please contact Buster + Punch for any faulty product. Please supply photos or videos.
TOGGLE	Are your toggle modules tested for use throughout North America?	Yes, our modules are certified for use throughout North America. Module cETLus listed number: 5005703 Conforms to UL STD. 20" Certified to CSA STD. C22.2 NO. 111 All modules are marked with the listed number. Plate cULus listed number: 507052.

[product.]

ELECTRICITY / 2G TOGGLE SWITCH

[motion. **ON/OFF.**]

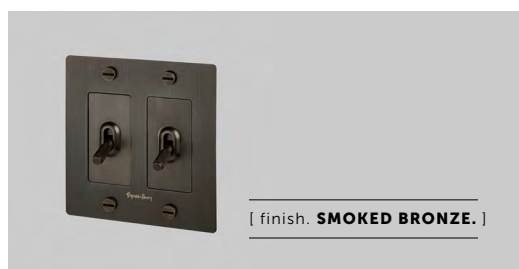
[look. **CROSS.**]

[detail. **COIN SCREW.**]

[born. **LONDON.**]

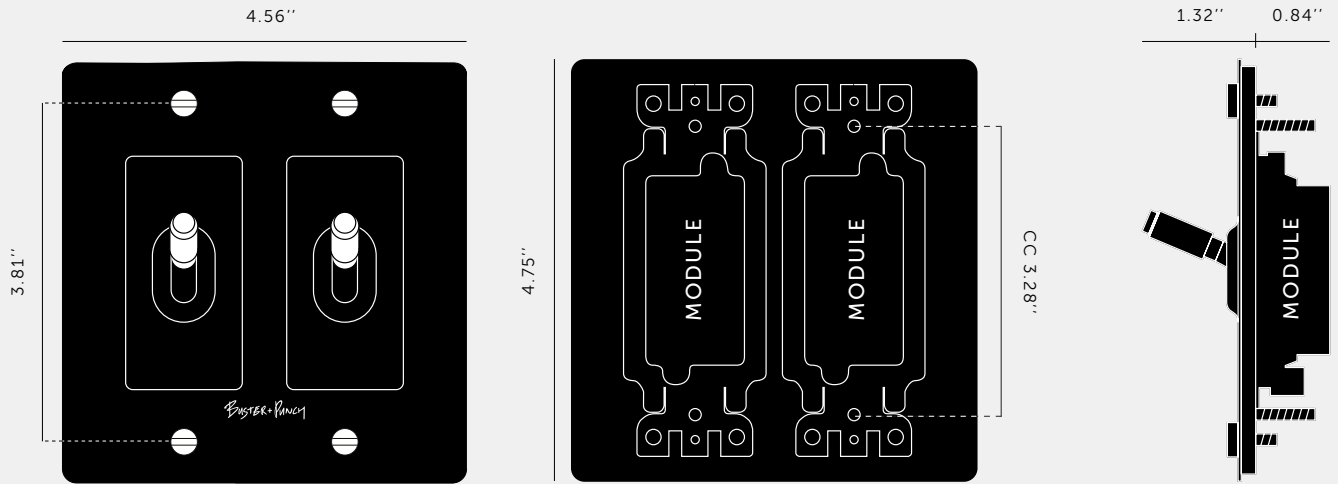
[region. **NORTH AMERICA.**]

A solid metal 2G toggle switch with a diamond-cut knurled knob to feel amazing with every touch. The switch is finished with a flat plate and our signature solid metal coin screws. Available in five different finishes. You can also team them up with our dimmers, duplex and USB outlets in matching finishes.



[gang. **2G.**]

[info. **MEASUREMENTS.**]



[info. **SPECIFICATIONS.**]

Our Metal Electricity range has solid stainless steel plates, in our signature white, steel, brass, smoked bronze and black finishes.

Module: NTM-01384 (US-TO-MO-A) (2 per unit)
Style: On/ Off Toggle switch
120-277V AC /15 A / 60 HZ
3 way switching (can be controlled from 2 locations)
Certification: cETLus 5005703

[info. **CERTIFICATION.**]

Plates: Underwriters Laboratories cULus listed for use throughout North America.

Toggle: Intertek cETLus listed number for use throughout North America.

[info. **CARE INSTRUCTIONS.**]

Wipe with damp cloth with no loose hairs, avoid using any chemicals. All finishes are prone to aging.

[please. **NOTE.**]

DISCLAIMER: Always consult a trade professional when installing this toggle switch. Buster + Punch is not responsible for the usage or feasibility of installation requirements. This product is not suitable for damp or wet environments.



[product.]

ELECTRICITY / 3G TOGGLE SWITCH

[motion. **ON/OFF.**]

[look. **CROSS.**]

[detail. **COIN SCREW.**]

[born. **LONDON.**]

[region. **NORTH AMERICA.**]

A solid metal 3G toggle switch with a diamond-cut knurled knob to feel amazing with every touch. The switch is finished with a flat plate and our signature solid metal coin screws. Available in five different finishes. You can also team them up with our dimmers, duplex and USB outlets in matching finishes.



[finish. **STEEL.**]



[finish. **BRASS.**]



[finish. **SMOKED BRONZE.**]



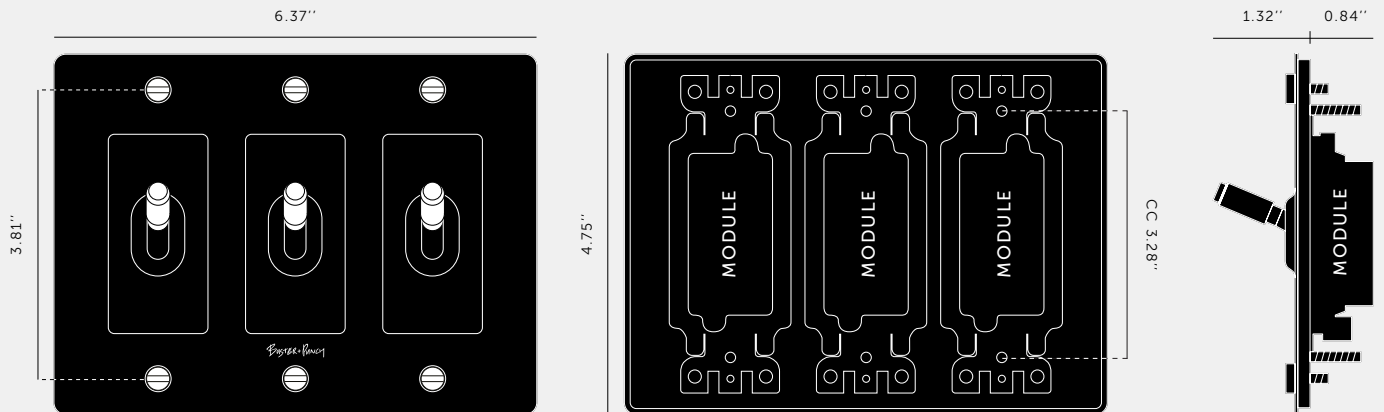
[finish. **BLACK.**]



[finish. **WHITE.**]

[gang. **3G.**]

[info. **MEASUREMENTS.**]



[info. **SPECIFICATIONS.**]

Our Metal Electricity range has solid stainless steel plates, in our signature white, steel, brass, smoked bronze and black finishes.

Module: NTM-01384 (US-TO-MO-A) (2 per unit)

Style: On/ Off Toggle switch

120-277V AC /15 A / 60 HZ

3 way switching (can be controlled from 2 locations)

Certification: cETLus 5005703

[info. **CERTIFICATION.**]

Plates: Underwriters Laboratories cULus listed for use throughout North America.

Toggle: Intertek cETLus listed number for use throughout North America.

[info. **CARE INSTRUCTIONS.**]

Wipe with damp cloth with no loose hairs, avoid using any chemicals. All finishes are prone to aging.

[please. **NOTE.**]

DISCLAIMER: Always consult a trade professional when installing this toggle switch. Buster + Punch is not responsible for the usage or feasibility of installation requirements. This product is not suitable for damp or wet environments.

[product.]

ELECTRICITY / 4G TOGGLE SWITCH

[motion. **ON/OFF.**]

[look. **CROSS.**]

[detail. **COIN SCREW.**]

[born. **LONDON.**]

[region. **NORTH AMERICA.**]

A solid metal 4G toggle switch with a diamond-cut knurled knob to feel amazing with every touch. The switch is finished with a flat plate and our signature solid metal coin screws. Available in five different finishes. You can also team them up with our dimmers, duplex and USB outlets in matching finishes.



[finish. **STEEL.**]



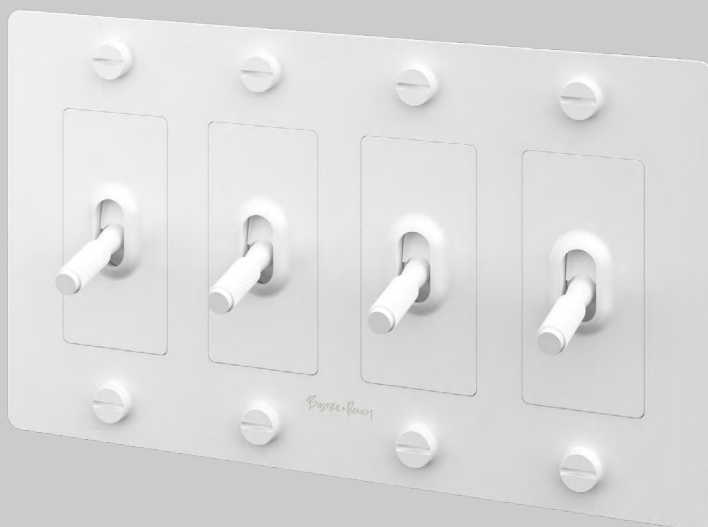
[finish. **BRASS.**]



[finish. **SMOKED BRONZE.**]



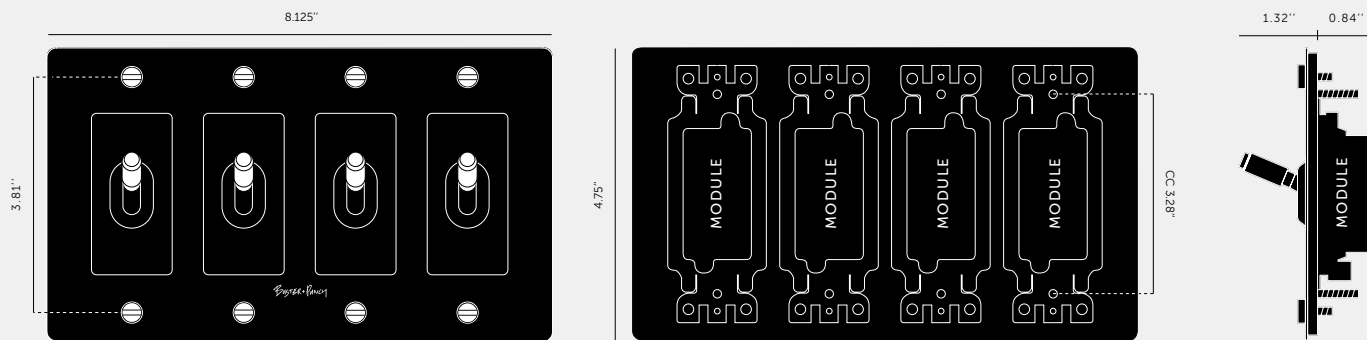
[finish. **BLACK.**]



[finish. **WHITE.**]

[gang. **4G.**]

[info. **MEASUREMENTS.**]



[info. **SPECIFICATIONS.**]

Our Metal Electricity range has solid stainless steel plates, in our signature white, steel, brass, smoked bronze and black finishes.

Module: NTM-01384 (US-TO-MO-A) (2 per unit)
Style: On/ Off Toggle switch
120-277V AC /15 A / 60 HZ
3 way switching (can be controlled from 2 locations)
Certification: cETLus 5005703

[info. **CARE INSTRUCTIONS.**]

Wipe with damp cloth with no loose hairs, avoid using any chemicals. All finishes are prone to aging.

[info. **CERTIFICATION.**]

Plates: Underwriters Laboratories cULus listed for use throughout North America.

Toggle: Intertek cETLus listed number for use throughout North America.

[please. **NOTE.**]

DISCLAIMER: Always consult a trade professional when installing this toggle switch. Buster + Punch is not responsible for the usage or feasibility of installation requirements. This product is not suitable for damp or wet environments.

FAQ SHEET

CATEGORY	QUESTION	ANSWER
GENERAL	How do I clean my electricity collection?	A slightly damp microfiber cloth is best, never use any chemicals as this will damage the metal surface.
TOGGLE	I need more than 2 switches in the same location. Do I need to have separate plates?	We also offer separate modules and plates up to 4G for larger requirements. Please refer to our website for purchasing options, or contact one of our sales representatives for more information.
TOGGLE	Are these toggles suitable for 4 way switching? (control from 3 or more locations)	Unfortunately 4 way switching is not supported on this module yet. Please ask one of our sales team if this will be available from us in the near future.
TOGGLE	Are these toggle switches compatible with smart home systems?	This toggle performs a latching on-off function only. Although each smart home system is different, most require a momentary or 'normally open' switches to function properly. Please ask one of our sales team if this will be available from us in the near future.
CUSTOMIZE	Can I customize the appearance of my toggle switch?	Our toggle modules are customizable with interchangeable details kits in 5 finishes. Refer to our website for options, or contact one of our sales representatives for more information.
CUSTOMIZE	Can I combine different modules on the same plate?	Our plates are designed to fit a combination of modules, from 1-4G. Please refer to our website for options, or contact one of our sales representatives for more information.
INSTALL	Will this dimmer work with my existing wall box?	Please reference the key dimensions of the module and mounting holes when checking compatibility. To ensure a flush fit to the wall, we always recommend flush mounted wall boxes, which are widely available from major retailers.
INSTALL	Can I install my toggle myself?	We strongly recommend that our products are always installed by a qualified electrician. Always refer to the safety notices within the instruction manual before attempting any electrical installation.
TOGGLE	Are your toggle modules tested for use throughout North America?	<p>Yes, our modules are certified for use throughout North America.</p> <p>Module cETLus listed number: 5005703 Conforms to UL STD. 20" Certified to CSA STD. C22.2 NO. 111 All modules are marked with the listed number.</p> <p>Plate cULus listed number: 507052.</p>



[product.]

ELECTRICITY / 2G TOGGLE SWITCH

[motion. **ON/OFF.**]

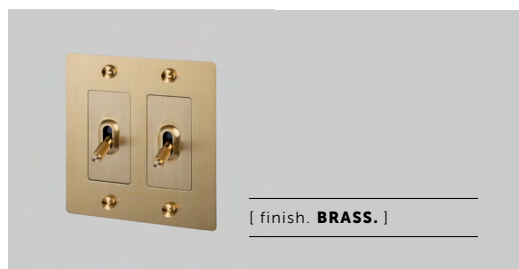
[look. **CROSS.**]

[detail. **COIN SCREW.**]

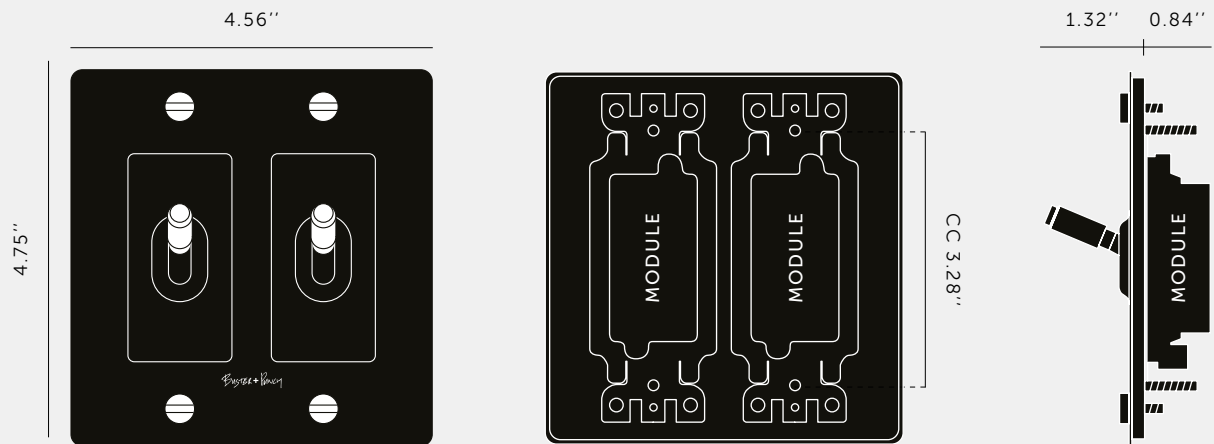
[born. **LONDON.**]

[region. **NORTH AMERICA.**]

A solid metal 2g toggle switch with a diamond-cut knurled knob to feel amazing with every touch. The switch is finished with a flat plate and our signature solid metal coin screws. Available in five different finishes. You can also team them up with our dimmers, duplex and USB outlets in matching finishes.



[info. **MEASUREMENTS.**]








[info. **SPECIFICATIONS.**]

Our Metal Electricity range has solid stainless steel plates, in our signature white, steel, brass, smoked bronze and black finishes.

Module: NTM-01384 (US-TO-MO-A) (2 per unit)
Style: On/ Off Toggle switch
120-277V AC /15 A / 60 HZ
3 way switching (can be controlled from 2 locations)
Certification: cETLus 5005703

[info. **FINISH & SKU NUMBERS.**]

[finish.]	[US.]
 White	NTG-143088
 Steel	NTG-07089
 Brass	NTG-05086
 Smoked Bronze	NTG-09088
 Black	NTG-023086

[info. **CARE INSTRUCTIONS.**]

Wipe with damp cloth with no loose hairs, avoid using any chemicals. All finishes are prone to aging.

[info. **CERTIFICATION.**]

Plates: Underwriters Laboratories cULus listed for use throughout North America.

Toggle: Intertek cETLus listed number for use throughout North America.

[please. **NOTE.**]

DISCLAIMER: Always consult a trade professional when installing this toggle switch. Buster + Punch is not responsible for the usage or feasibility of installation requirements. This product is not suitable for damp or wet environments.

FAQ SHEET

CATEGORY	QUESTION	ANSWER
GENERAL	How do I clean my electricity collection?	A slightly damp microfiber cloth is best, never use any chemicals as this will damage the metal surface.
TOGGLE	I need more than 2 switches in the same location. Do I need to have separate plates?	We also offer separate modules and plates up to 4G for larger requirements. Please refer to our website for purchasing options, or contact one of our sales representatives for more information.
TOGGLE	Are these toggles suitable for 4 way switching? (control from 3 or more locations)	Unfortunately 4 way switching is not supported on this module yet. Please ask one of our sales team if this will be available from us in the near future.
TOGGLE	Are these toggle switches compatible with smart home systems?	This toggle performs a latching on-off function only. Although each smart home system is different, most require a momentary or 'normally open' switches to function properly. Please ask one of our sales team if this will be available from us in the near future.
CUSTOMIZE	Can I customize the appearance of my toggle switch?	Our toggle modules are customizable with interchangeable details kits in 5 finishes. Refer to our website for options, or contact one of our sales representatives for more information.
CUSTOMIZE	Can I combine different modules on the same plate?	Our plates are designed to fit a combination of modules, from 1-4G. Please refer to our website for options, or contact one of our sales representatives for more information.
INSTALL	Will this dimmer work with my existing wall box?	Please reference the key dimensions of the module and mounting holes when checking compatibility. To ensure a flush fit to the wall, we always recommend flush mounted wall boxes, which are widely available from major retailers.
INSTALL	Can I install my toggle myself?	We strongly recommend that our products are always installed by a qualified electrician. Always refer to the safety notices within the instruction manual before attempting any electrical installation.
TOGGLE	Are your toggle modules tested for use throughout North America?	<p>Yes, our modules are certified for use throughout North America.</p> <p>Module cETLus listed number: 5005703 Conforms to UL STD. 20" Certified to CSA STD. C22.2 NO. 111 All modules are marked with the listed number.</p> <p>Plate cULus listed number: 507052.</p>