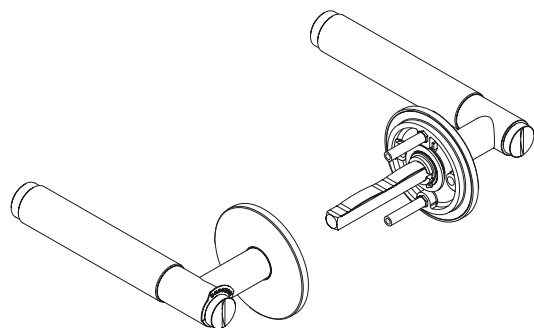


# BUSTER + PUNCH

LONDON

## US DOOR LEVER HANDLE PRE-DRILLED OR 2-1/8" BORE / PASSAGE

INSTRUCTION MANUAL US  
MANUEL D'UTILISATION É.-U.  
MANUAL DE INSTRUCCIONES (EE. UU.)



**EN: USE: For residential use. For interior use only.**

**DISCLAIMER: This product is not suitable for commercial use. Always consult a trade professional when installing these products. Buster + Punch is not responsible for the usage or feasibility of installation requirements. This product is not suitable for damp or wet environments.**

FR: UTILISATION : usage résidentiel. Pour l'intérieur seulement.

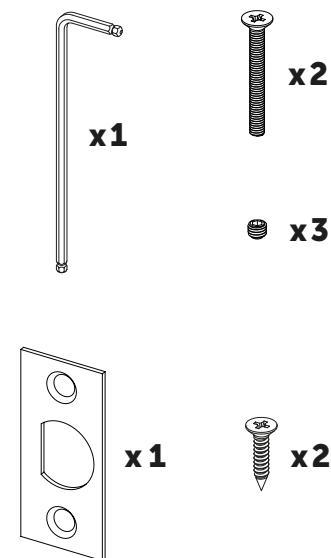
AVERTISSEMENT : ce produit ne convient pas à un usage commercial. Faites toujours appel à un professionnel pour installer ces produits. Buster + Punch n'est pas responsable de l'utilisation ou de la faisabilité des exigences d'installation. Ce produit ne convient pas aux environnements humides ou mouillés.

SP: USO: Para uso doméstico. Solo para uso interno.

AVISO LEGAL: Este producto no es apto para uso comercial. Consulte siempre a un profesional del sector cuando vaya a instalar estos productos. Buster + Punch no se hace responsable de su uso ni de la viabilidad de los requisitos de instalación. Este producto no es adecuado para entornos húmedos o mojados.

BUSTERANDPUNCH.COM  
L0080

## CONTENTS



**EN: LEVER HANDLES, FOR INSTALLATION ONTO A MINIMUM 1-3/8" DOOR.**

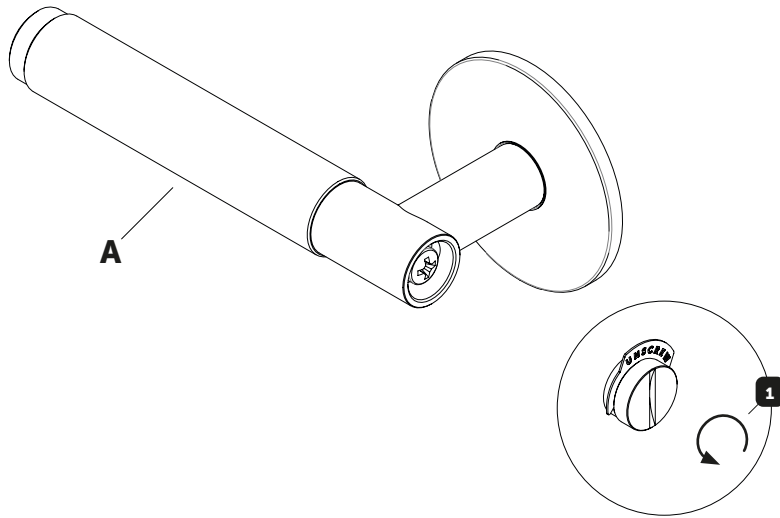
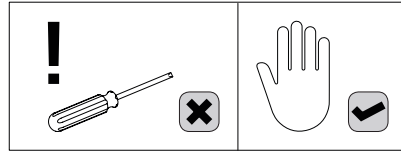
FR: POIGNÉES À LEVIER, POUR INSTALLATION SUR UNE PORTE D'AU MOINS 1-3/8" D'ÉPAISSEUR.

SP: MANDOS DE PALANCA, PARA INSTALAR EN UNA PUERTA DE 1-3/8" COMO MÍNIMO.

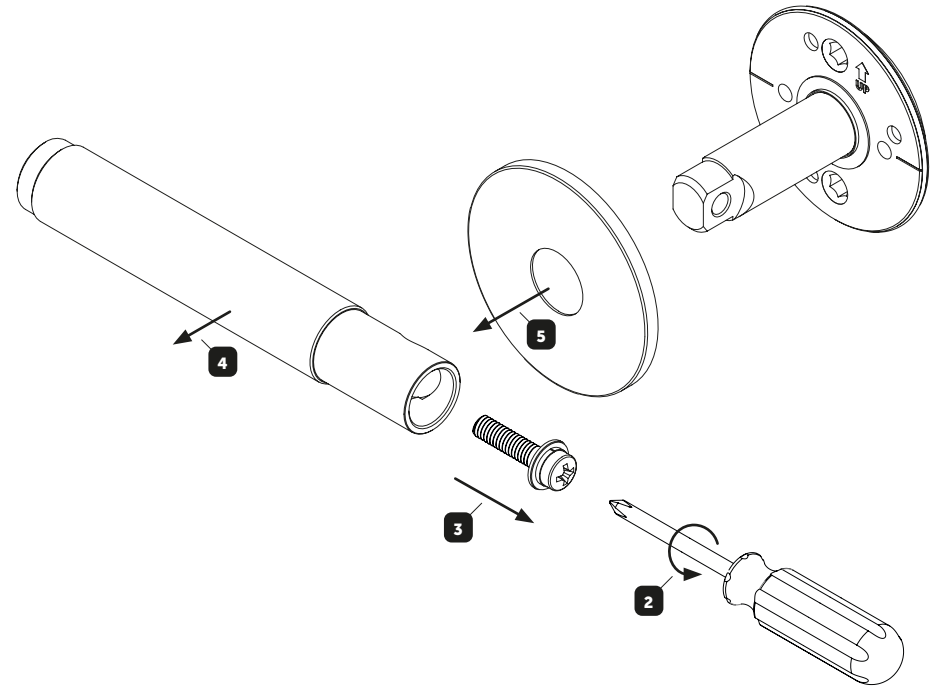
**EN: INCLUDED WITH THE TUBULAR LATCH.**

FR: INCLUS AVEC LE LOQUET TUBULAIRE.  
SP: INCLUIDO CON EL PESTILLO TUBULAR.

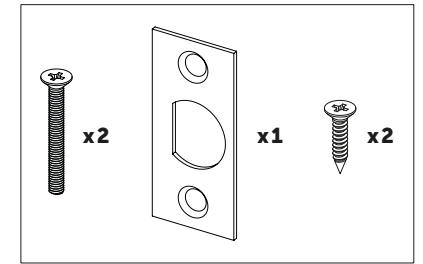
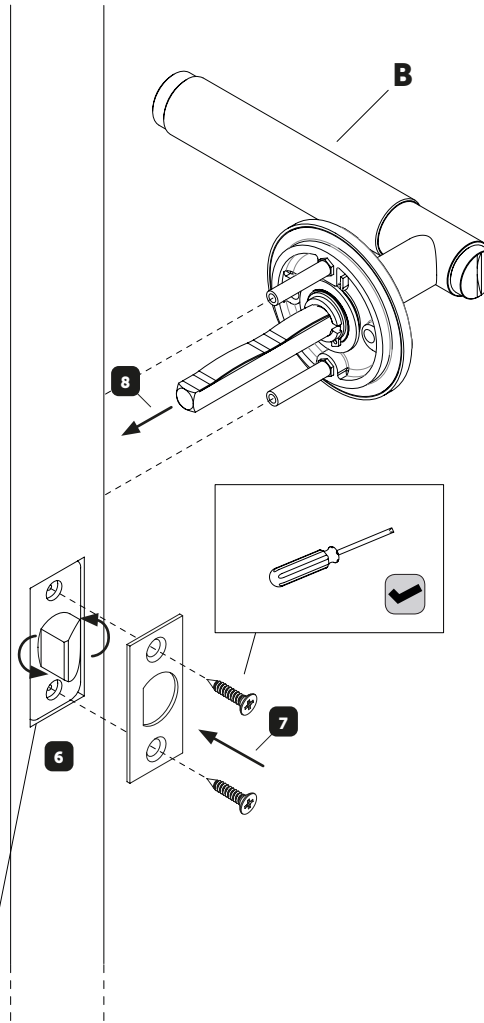
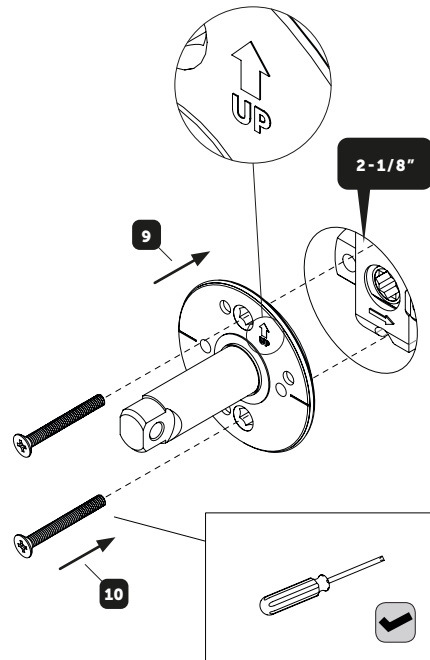
1



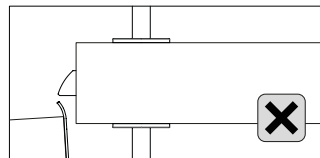
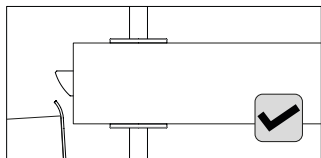
2



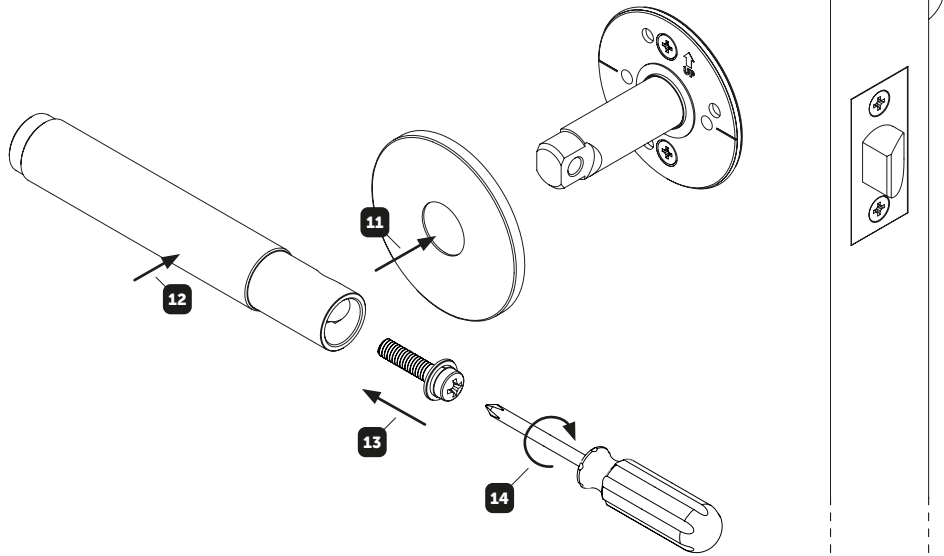
3



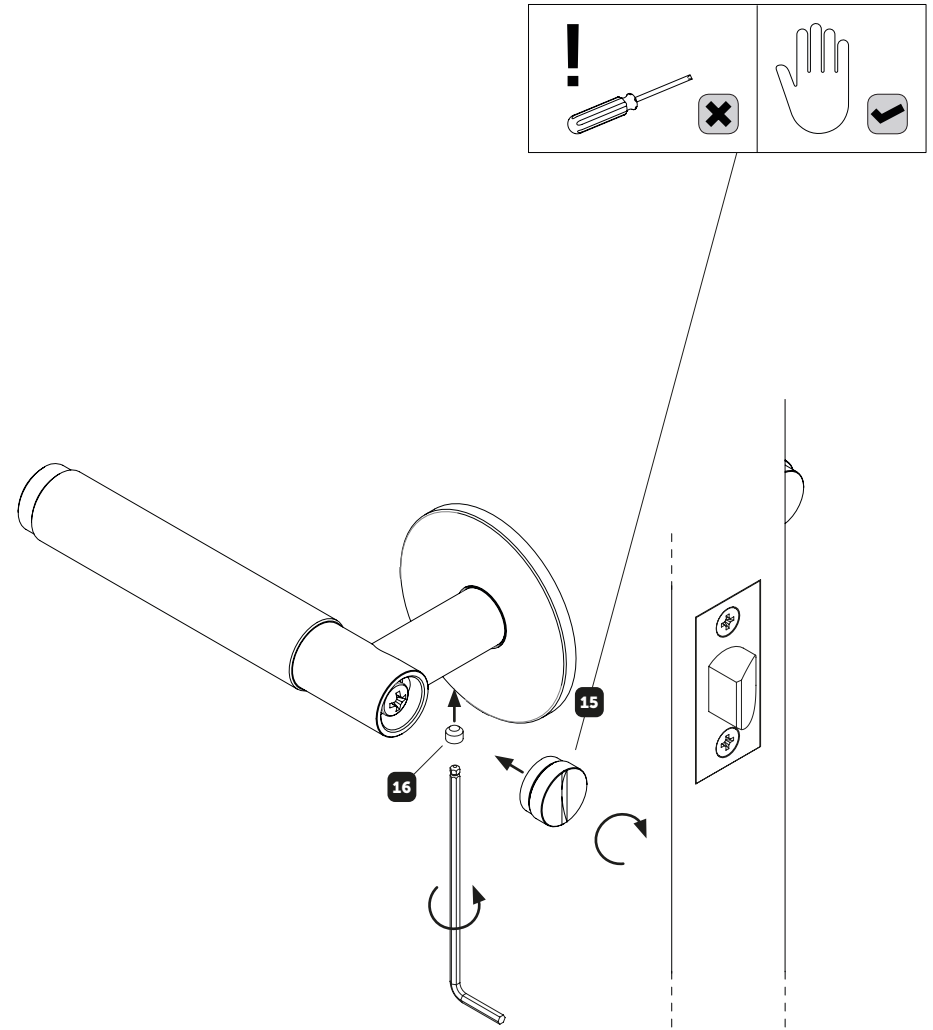
**EN: ROTATE THE LATCH TONGUE TO ENSURE THAT IS IT ORIENTATED CORRECTLY.**  
FR: FAITES PIVOTER LA LANGUETTE DU LOQUET POUR VOUS ASSURER QU'ELLE EST CORRECTEMENT ORIENTÉE.  
SP: GIRE LA LENGÜETA DEL PESTILLO PARA ASEGURARSE DE QUE ESTÉ ORIENTADA CORRECTAMENTE.



1



2



⊕ x1



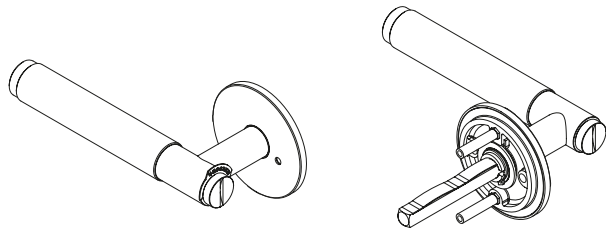
# BUSTER+PUNCH

LONDON

## US DOOR HANDLE

PRE-DRILLED OR 2-1/8" BORE / PRIVACY

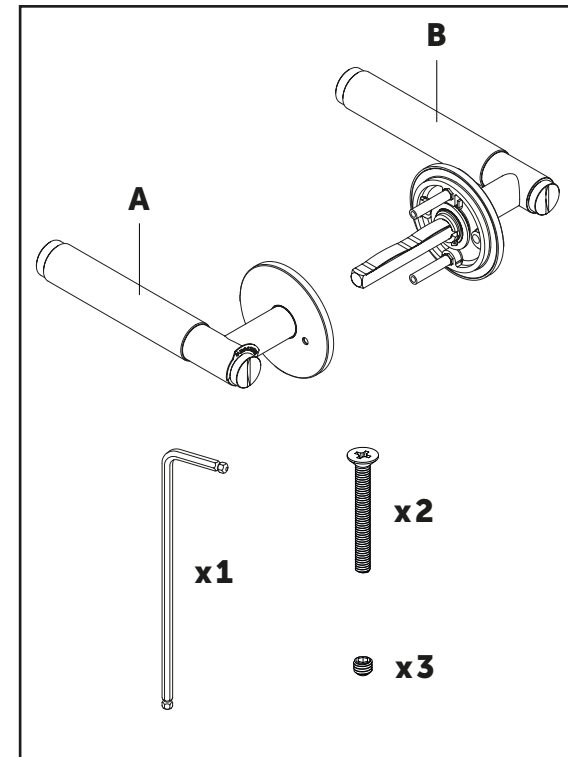
INSTRUCTION MANUAL US  
MANUEL D'UTILISATION É.-U.  
MANUAL DE INSTRUCCIONES (EE. UU.)



**EN: LEVER HANDLES, FOR INSTALLATION ONTO A MINIMUM 1-3/8" DOOR.**  
FR: POIGNÉES À LEVIER, POUR INSTALLATION SUR UNE PORTE D'AU MOINS 1-3/8" D'ÉPAISSEUR.  
SP: MANDOS DE PALANCA, PARA INSTALAR EN UNA PUERTA DE 1-3/8" COMO MÍNIMO.

BUSTERANDPUNCH.COM  
L0116

## CONTENTS



**EN: USE: For residential use. For interior use only.**

**DISCLAIMER: This product is not suitable for commercial use. Always consult a trade professional when installing these products. Buster + Punch is not responsible for the usage or feasibility of installation requirements. This product is not suitable for damp or wet environments.**

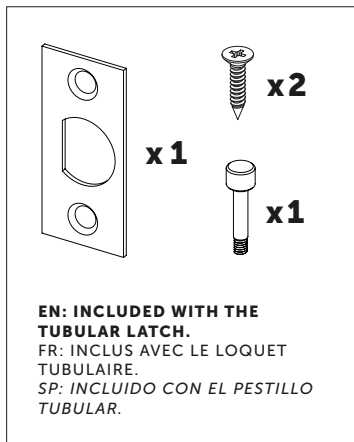
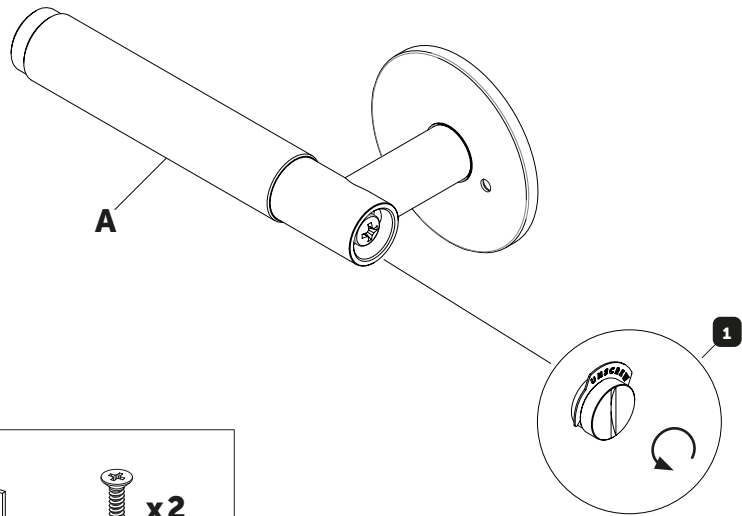
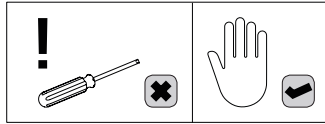
FR: UTILISATION : usage résidentiel. Pour l'intérieur seulement.

AVERTISSEMENT : ce produit ne convient pas à un usage commercial. Faites toujours appel à un professionnel pour installer ces produits. Buster + Punch n'est pas responsable de l'utilisation ou de la faisabilité des exigences d'installation. Ce produit ne convient pas aux environnements humides ou mouillés.

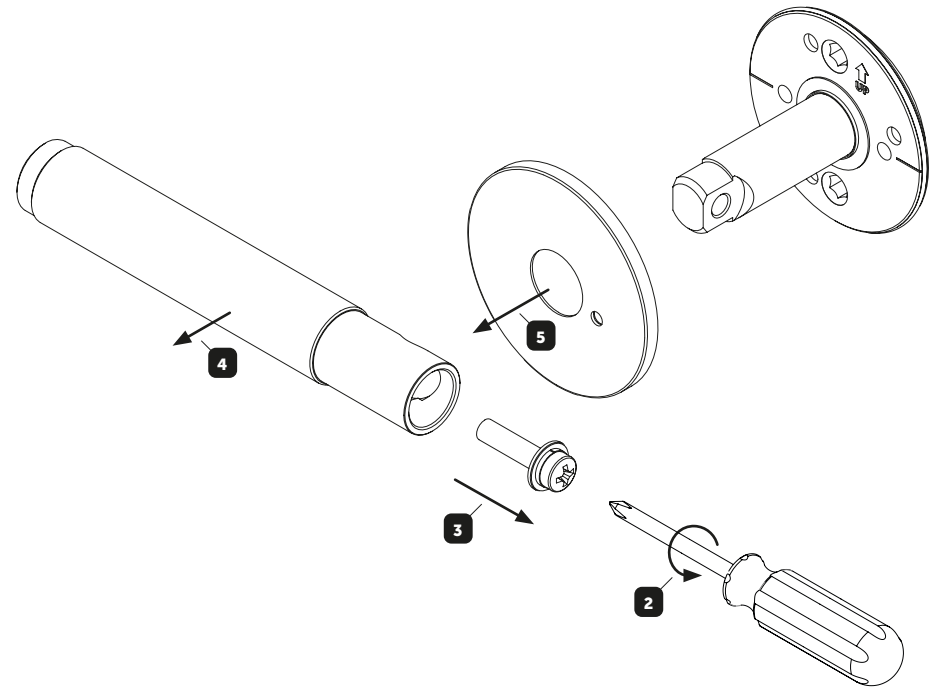
SP: USO: Para uso doméstico. Solo para uso interno.

AVISO LEGAL: Este producto no es apto para uso comercial. Consulte siempre a un profesional del sector cuando vaya a instalar estos productos. Buster + Punch no se hace responsable de su uso ni de la viabilidad de los requisitos de instalación. Este producto no es adecuado para entornos húmedos o mojados.

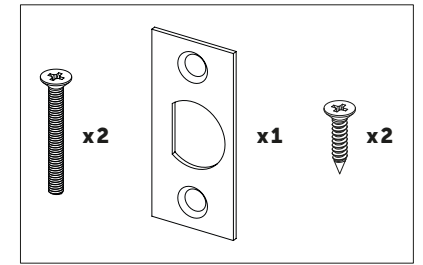
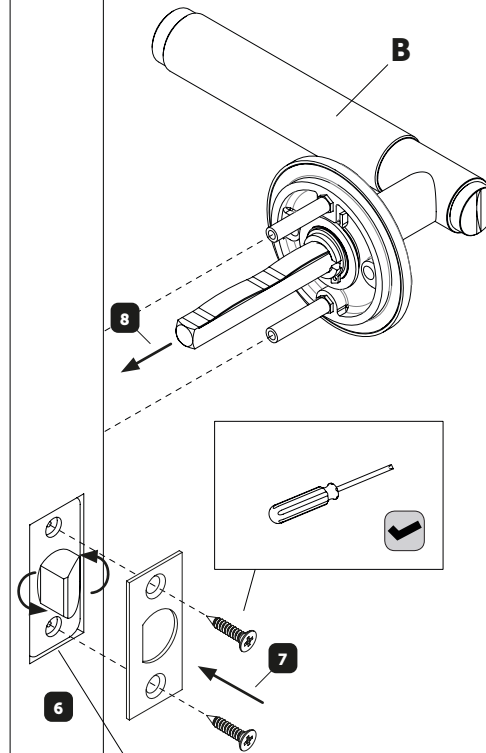
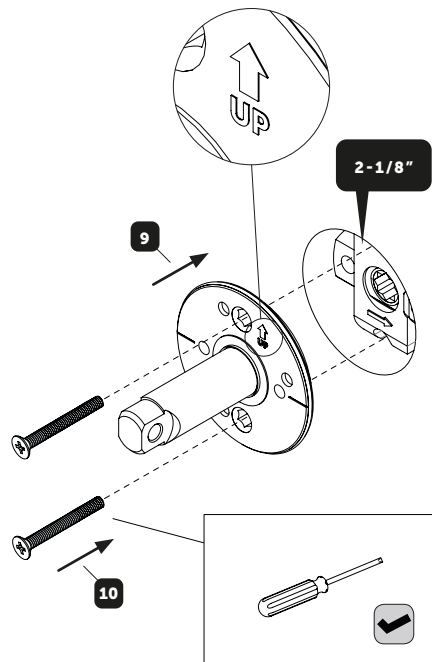
1



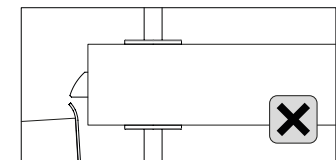
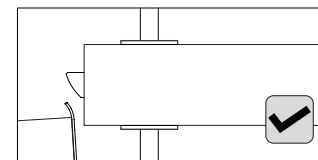
2



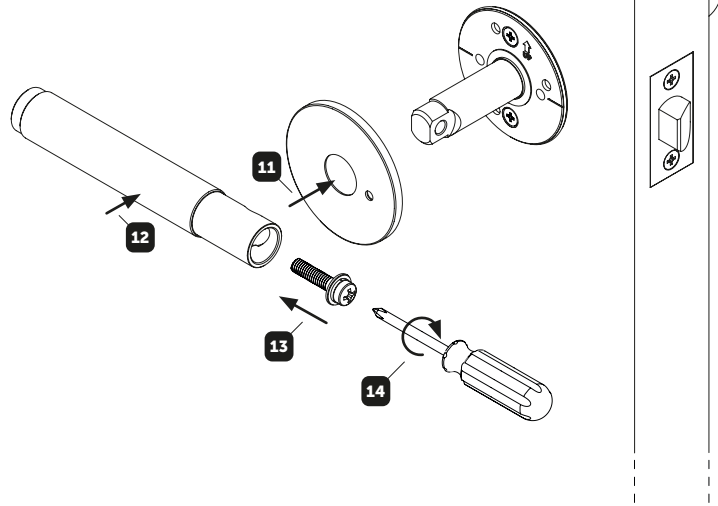
3



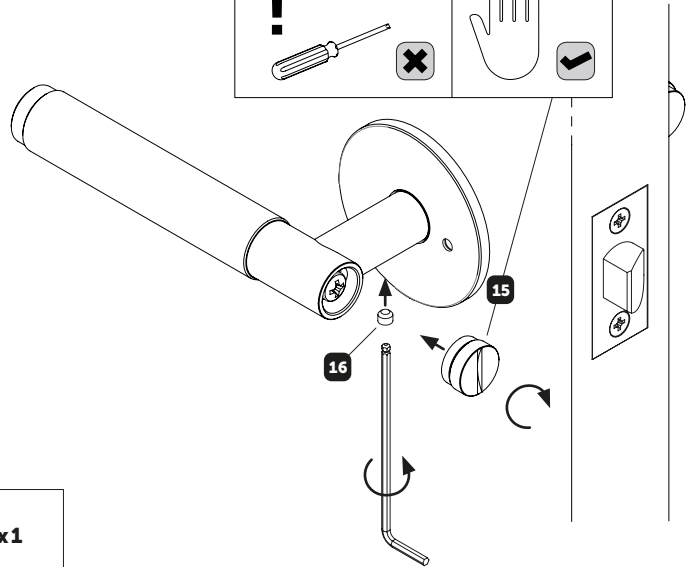
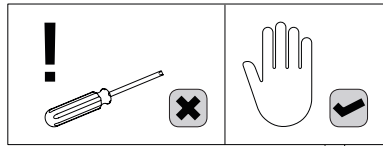
**EN: ROTATE THE LATCH TONGUE TO ENSURE THAT IS IT ORIENTATED CORRECTLY.**  
**FR: FAITES PIVOTER LA LANGUETTE DU LOQUET POUR VOUS ASSURER QU'ELLE EST CORRECTEMENT ORIENTÉE.**  
**SP: GIRE LA LENGÜETA DEL PESTILLO PARA ASEGURARSE DE QUE ESTÉ ORIENTADA CORRECTAMENTE.**



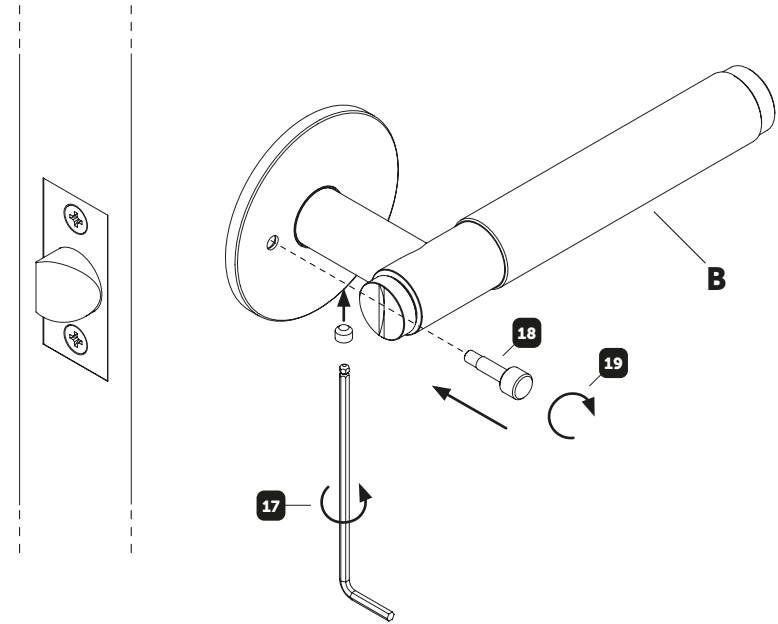
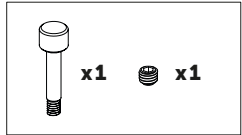
4



5



6



EN: INSTALL PRIVACY PIN ON THE INSIDE OF THE DOOR.  
 FR: INSTALLEZ LA GOUPILLE DE SÉCURITÉ À L'INTÉRIEUR DE LA PORTE.  
 SP: INSTALE EL PASADOR DE PRIVACIDAD EN EL INTERIOR DE LA PUERTA.

